

CHOOSE COUNTRY

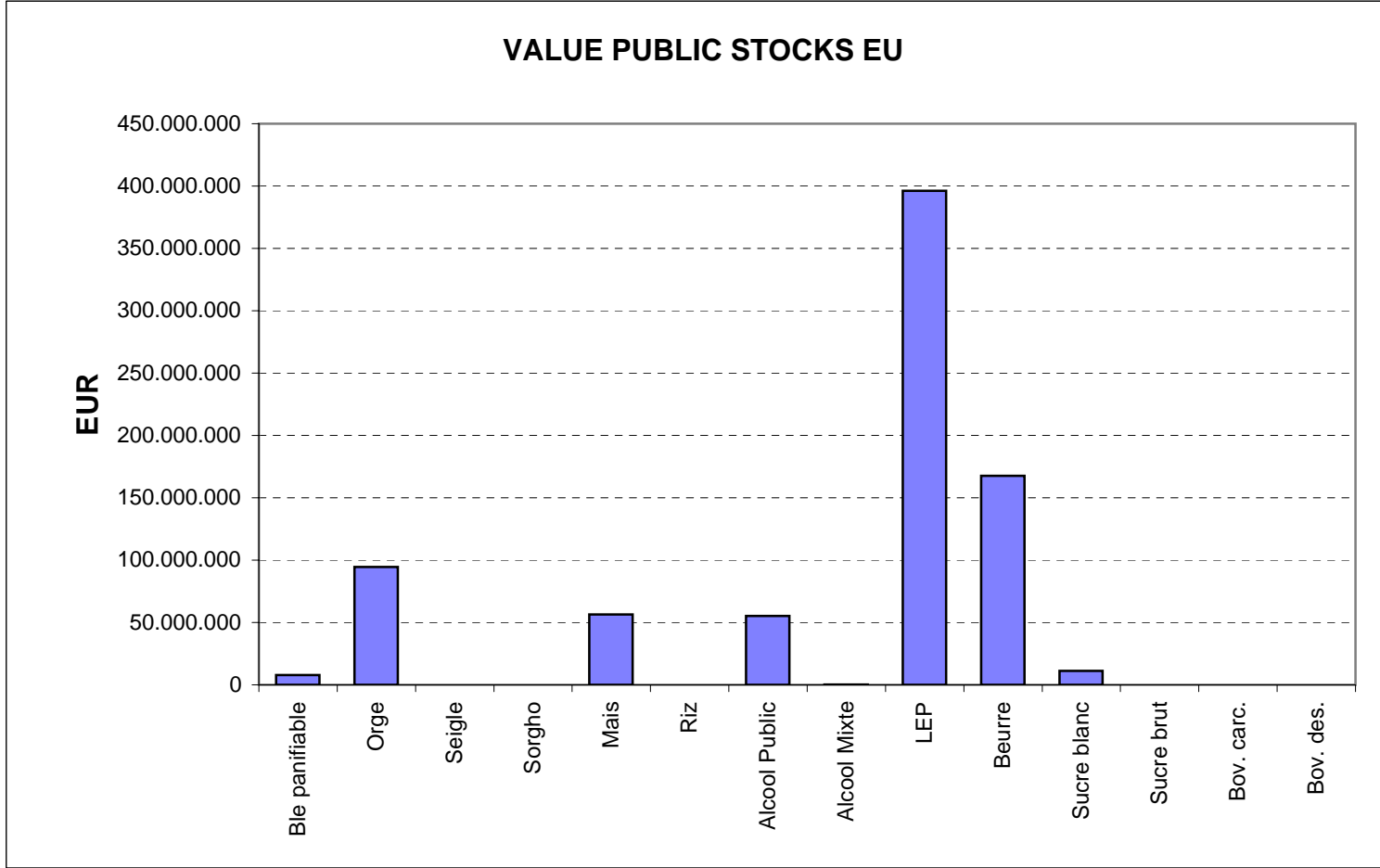
EU TOTAL	YEAR-TO-DATE		OPENING BALANCE (1)		CHANGE IN QTY		CHANGE IN VALUE	
	QUANTITY (tn or hl)	VALUE (in Euro)	QUANTITY (tn or hl)	VALUE (In Euro)	ABSOLUTE (tn or hl)	%	ABSOLUTE (in Euro)	%
CLICK TOTALS FOR GRAPHICS	(a)	(b)	(c)	(d)	(e)=(a)-(c)	(f)=(e)/(c)*%	(g)=(b)-(d)	(h)=(g)/(d)*%
Blé panifiable	76.703	7.911.341	76.703	7.911.093			248	0%
Orge	925.380	94.444.835	925.343	94.441.255	37	0%	3.580	0%
Seigle								
Sorgho	501	50.792	502	50.812	0	0%	-20	0%
Mais	556.092	56.507.629	556.118	56.510.721	-26	0%	-3.092	0%
TOTAL CEREALES	1.558.676	158.914.597	1.558.665	158.913.880	11	0%	717	0%
TOTAL RIZ								
Alcool Public	1.490.634	55.270.411	1.601.004	59.353.415	-110.369	-7%	-4.083.004	-7%
Alcool Mixte	11.088	180.880	11.088	180.880				
TOTAL ALCOOL (HL 100%)	1.501.723	55.451.291	1.612.092	59.534.295	-110.369	-7%	-4.083.004	-7%
LEP	265.492	396.142.690	265.671	395.852.212	-179	0%	290.477	0%
Beurre	76.988	167.692.311	78.704	171.431.622	-1.716	-2%	-3.739.311	-2%
TOTAL LAIT ET BEURRE	342.480	563.835.001	344.375	567.283.834	-1.895	-1%	-3.448.833	-1%
Sucre Blanc	34.830	11.227.656	34.832	11.228.054	-1	0%	-398	0%
Sucre Brut								
TOTAL SUCRE	34.830	11.227.656	34.832	11.228.054	-1	0%	-398	0%
Bov. carc.								
Bov. des.								
Eq. carc.								
TOTAL EQ. CARCASSES								
GRAND TOTAL		789.428.545		796.960.064			-7.531.518	-1%

SOURCE : The declarations of the Member States before controls.

(1) Period 12/2009 annual declaration

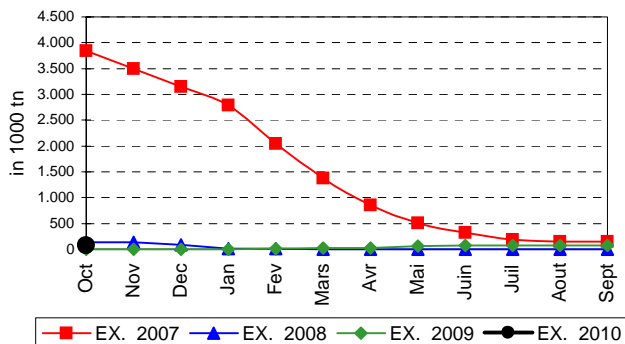
Produits		BE	BG	CZ	DK	DE	EE	IE	EL	ES	FR	IT	CY	LV	LT	LU	HU	MT	NL	OS	PL	PO	RO	SI	SK	FIN	SE	UK	TOTAL
BLE PANIF	quant.		3.013	31.984													30.405			1.382				9.171	748				76.703
	valeur		305.224	3.360.580														3.080.349			140.010				949.788	75.390			
ORGE	quant.			159.071		141.670	6.169								76.489		136.372			6.852	79.161				24.083	224.438	71.074		925.380
	valeur			16.716.821		14.352.547	625.022								7.749.102		13.815.811			694.224	8.019.820				2.508.476	22.762.521	7.200.484		94.444.835
SEIGLE	quant.																												
	valeur																												
SORGHO	quant.																501												501
	valeur																50.792												50.792
MAIS	quant.																445.687								110.404			556.092	
	valeur																45.148.140								11.359.489			56.507.629	
TOT.CER	quant.		3.013	191.056		141.670	6.169								76.489		612.966			6.852	80.543				143.659	225.186	71.074	1.558.676	
RIZ	quant.																												
	valeur																												
ALC.P.	quant.								60.269	561.083	341.251	393.448	7.285				55.176					72.122						1.490.634	
	valeur								2.229.340	20.883.509	12.629.712	14.549.700	269.556				2.041.520					2.667.074						55.270.411	
ALC.M.	quant.										1.017	10.071																11.088	
	valeur										4.026	176.854																180.880	
TOT.ALC.	quant.								60.269	561.083	342.268	403.519	7.285				55.176					72.122						1.501.723	
LEP	quant.	25.333		3.766		63.842	2.634	32.146		1.603	61.391					10.344			19.860		20.549	2.755				1.552	3.614	16.102	265.492
	valeur	37.514.891		5.932.845		94.991.033	3.768.210	48.016.974		2.442.748	91.980.758					15.503.069			29.689.359		30.469.181	4.124.027				2.324.663	5.412.002	23.972.930	396.142.690
BEURRE	quant.	3.234		527		9.894	1.153	14.272		9.335	13.699				1.838				11.541		1.901	5.079					4.516	76.988	
	valeur	7.048.838		1.200.445		21.567.767	2.355.675	31.111.813		20.336.764	29.846.751				4.005.779				25.158.335		4.146.093	11.071.712					9.842.340	167.692.311	
TOT L&B	quant.	28.567		4.293		73.736	3.787	46.418		10.938	75.090				12.181				31.401		22.449	7.834				1.552	3.614	20.618	342.480
S. BLANC	quant.	1.109		2.138				1.392				30.191																34.830	
	valeur	324.441		720.950				404.975				9.777.291																11.227.656	
S. BRUT	quant.																												
	valeur																												
TOT. SUC	quant.	1.109		2.138				1.392				30.191																34.830	
BOV.QUA	quant.																												
	valeur																												
BOV.DES	quant.																												
	valeur																												
EQ. CARC	quant.																												
TOT EQ	quant.																												
EU TOTAL	valeur	44.888.170	305.224	27.931.641		130.911.347	6.748.907	79.533.761	2.229.340	43.663.020	134.461.246	24.503.845	269.556		27.257.949	64.136.612		54.847.694	694.224	42.775.111	17.862.813				14.817.755	25.162.574	12.612.486	33.815.271	789.428.545

PUBLIC INTERVENTION STOCKS

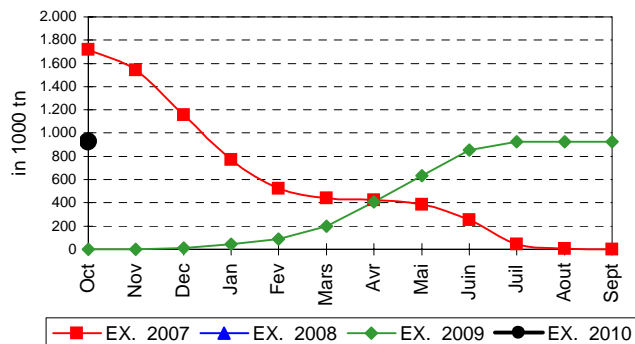


EVOLUTION IN QUANTITIES OF PUBLIC INTERVENTION STOCKS

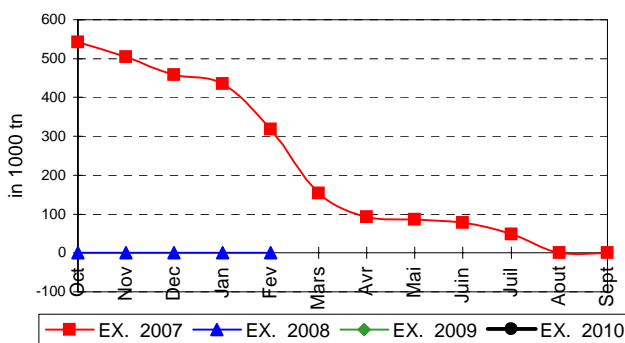
BLE TENDRE PANIFIABLE



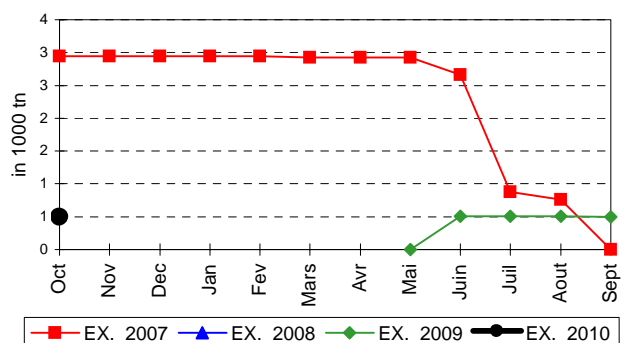
ORGE



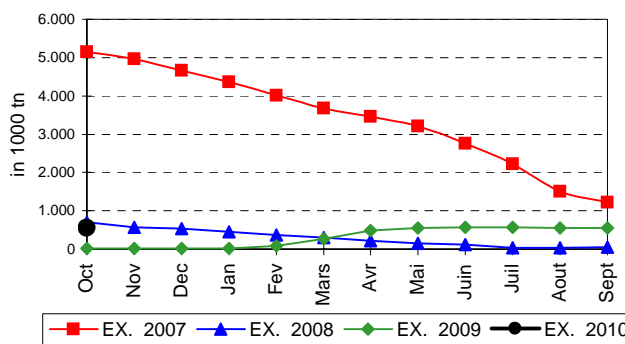
SEIGLE



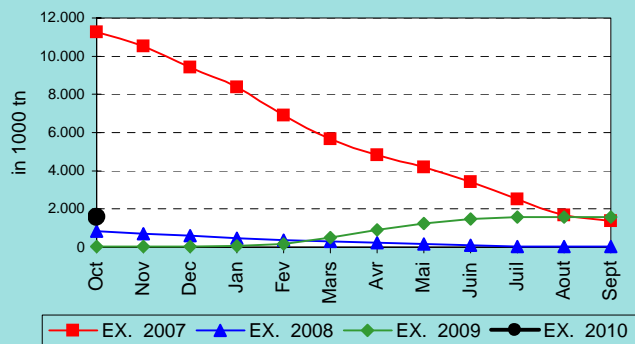
SORGHO



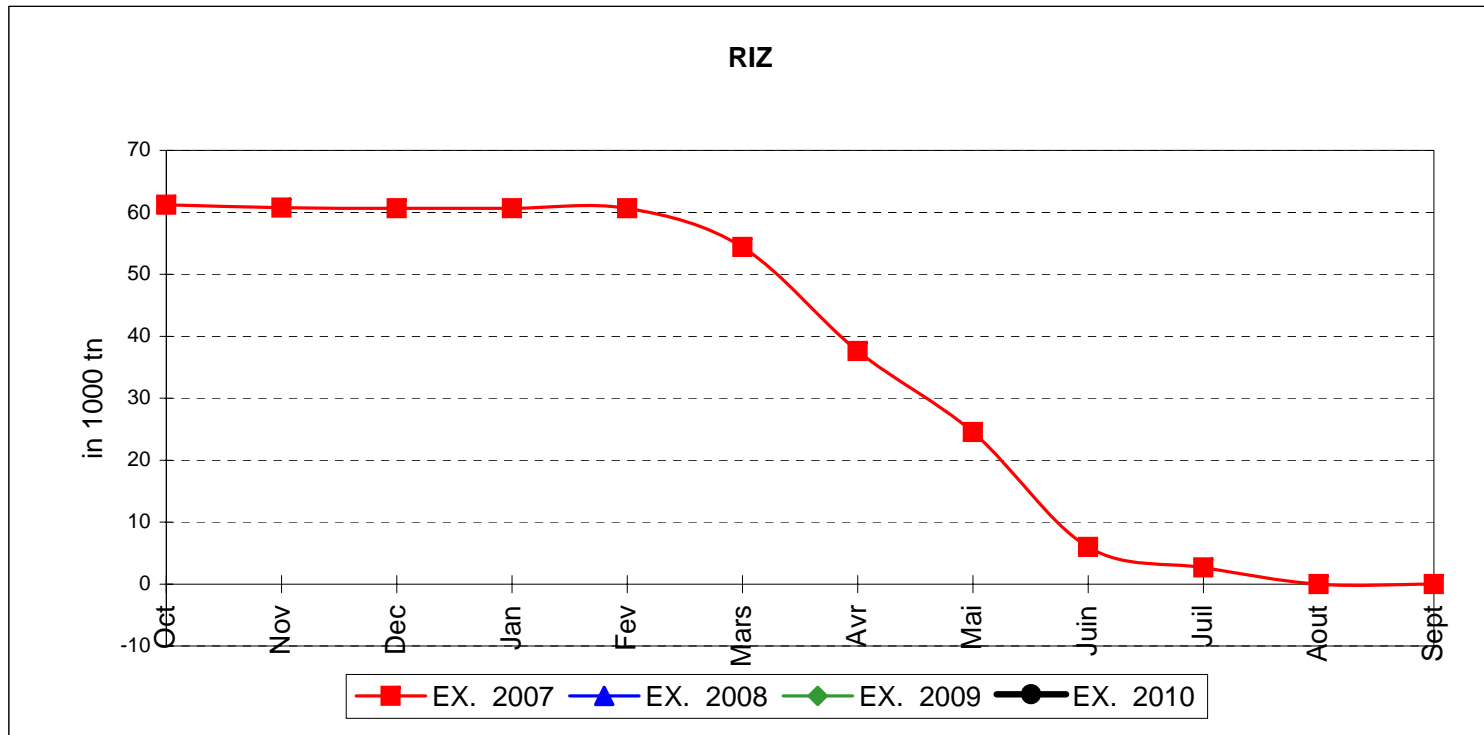
MAIS



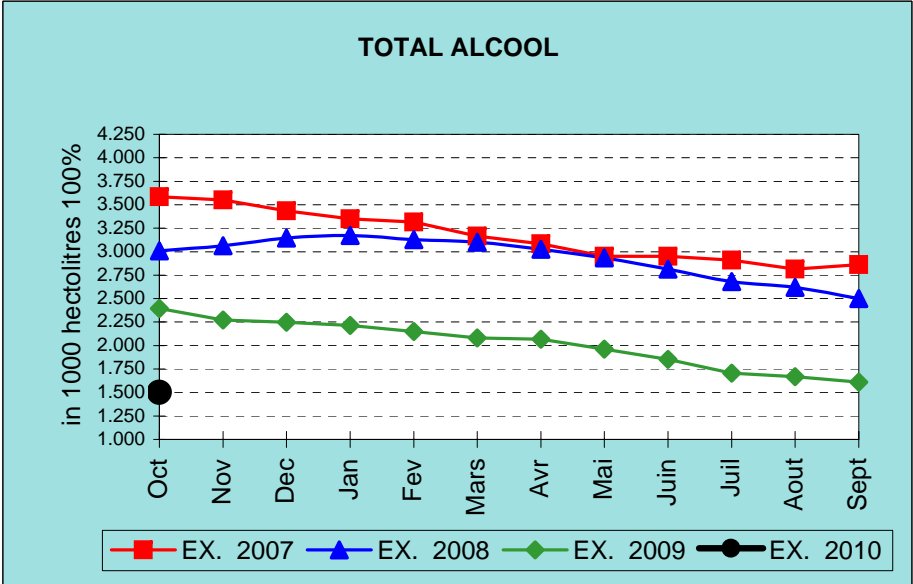
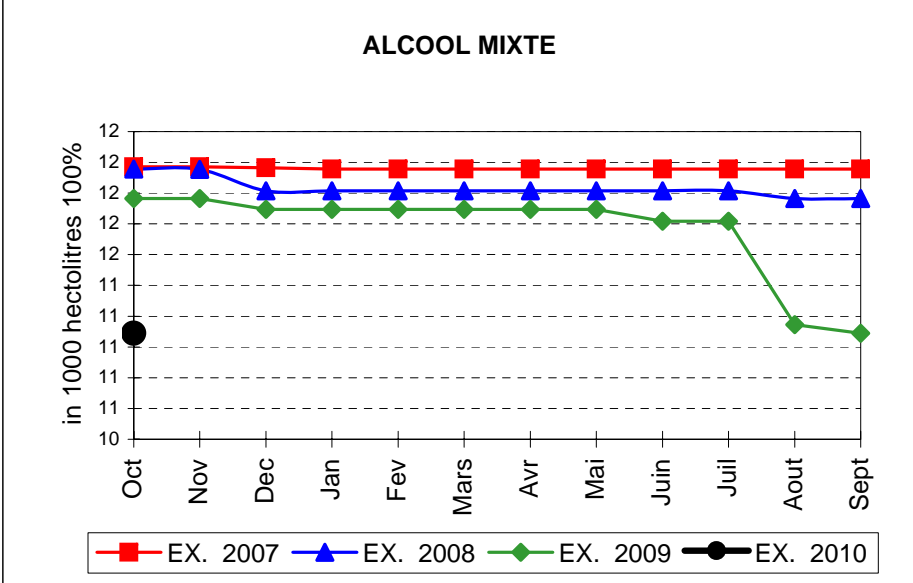
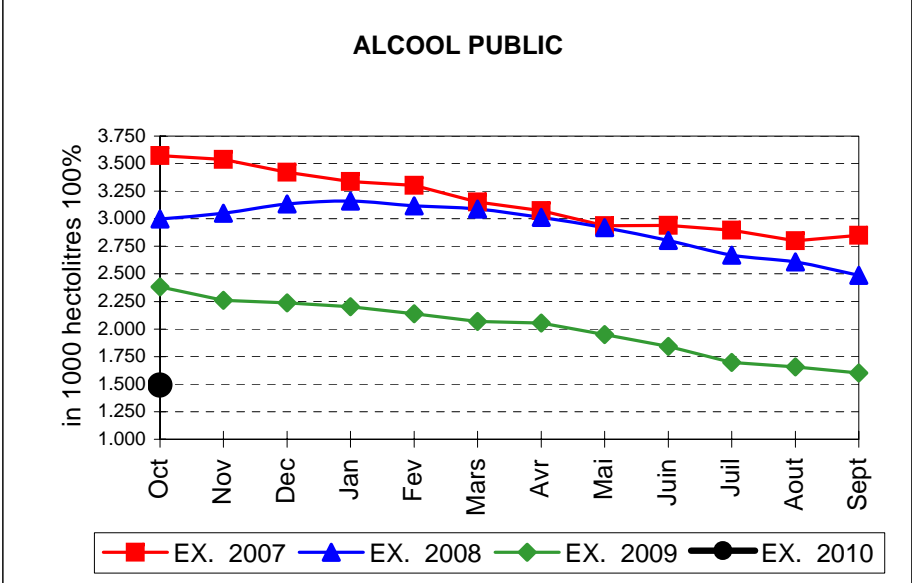
TOTAL CEREALES



EVOLUTION IN QUANTITIES OF PUBLIC INTERVENTION STOCKS

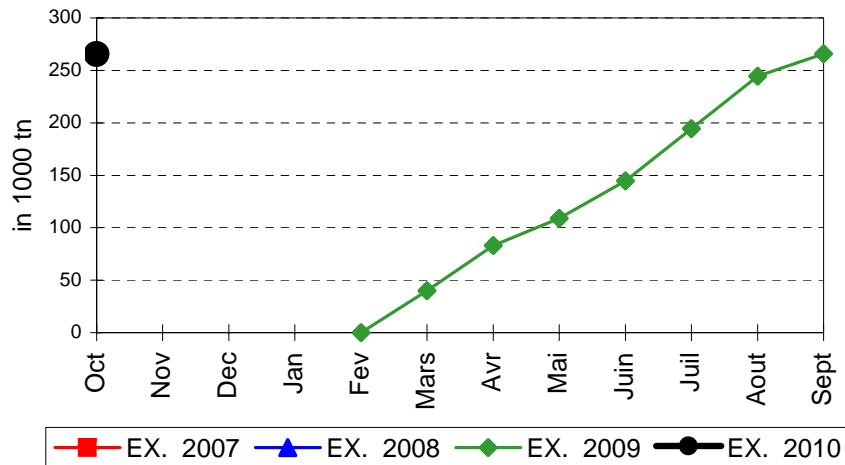


EVOLUTION IN QUANTITIES OF PUBLIC INTERVENTION STOCKS

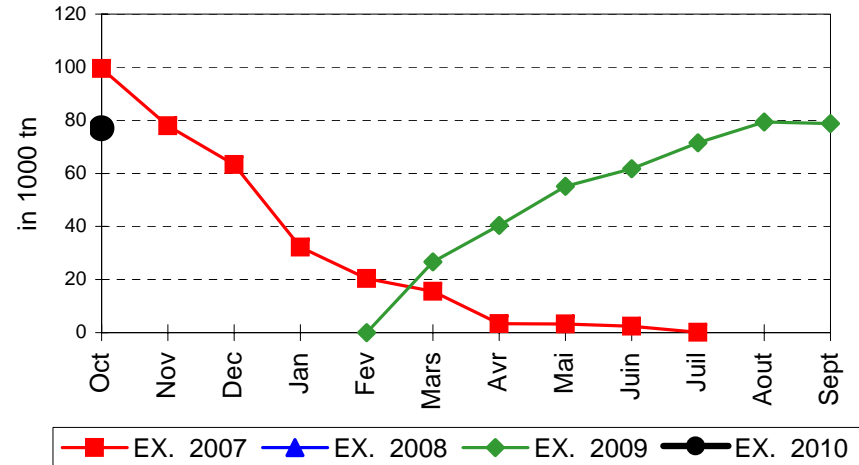


EVOLUTION IN QUANTITIES OF PUBLIC INTERVENTION STOCKS

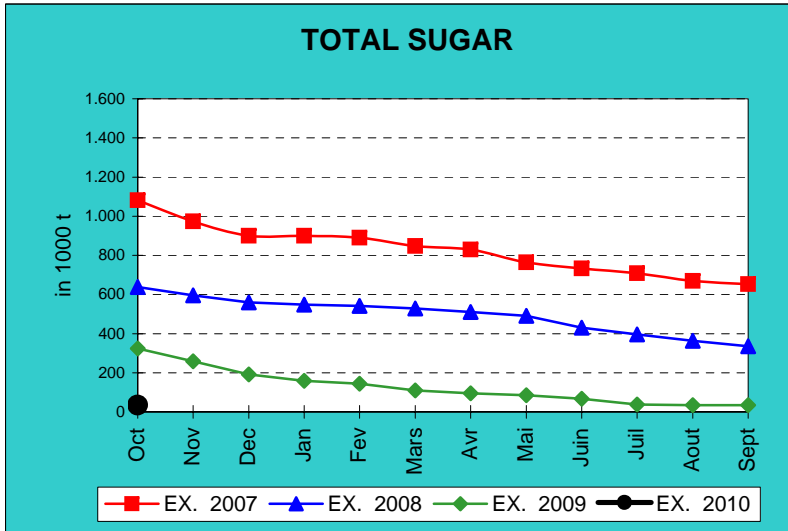
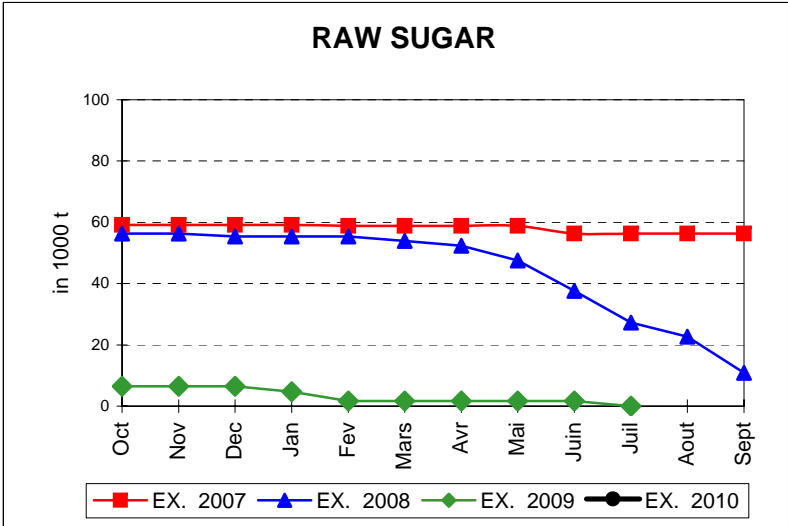
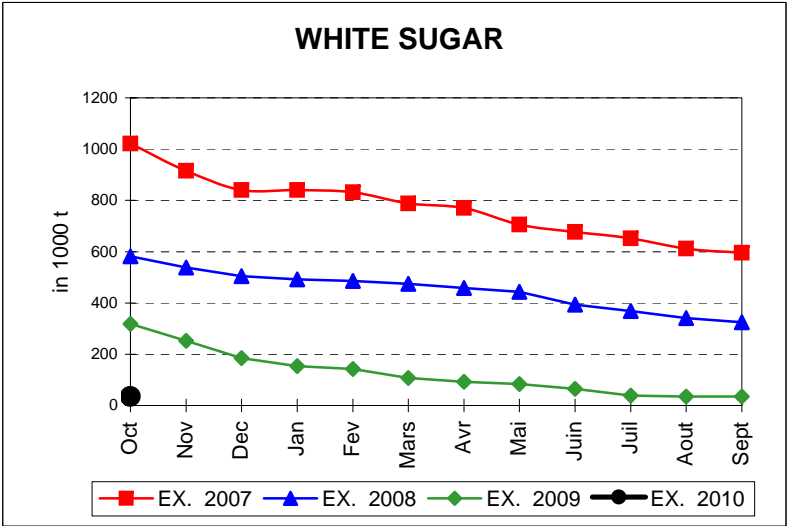
LAIT EN POUVRE



BEURRE

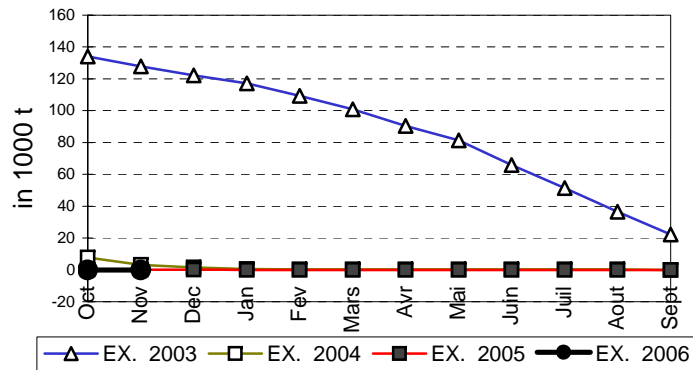


EVOLUTION IN QUANTITIES OF PUBLIC INTERVENTION STOCKS

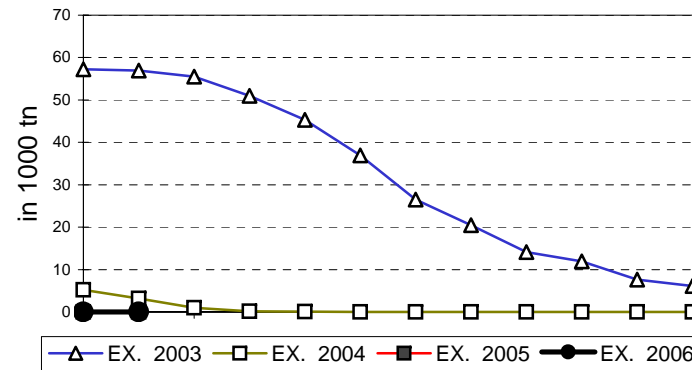


EVOLUTION IN QUANTITIES OF PUBLIC INTERVENTION STOCKS

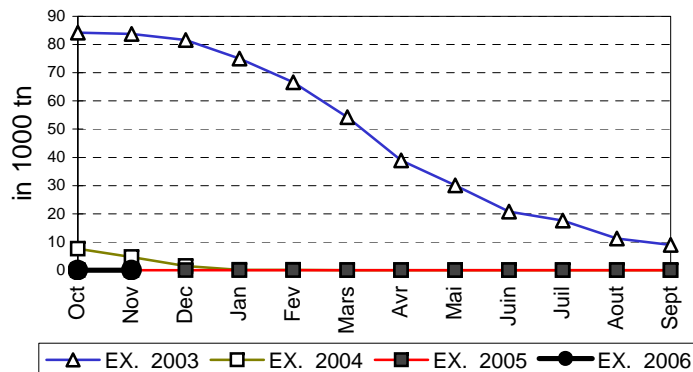
VIANDE BOVINE CARCASSES



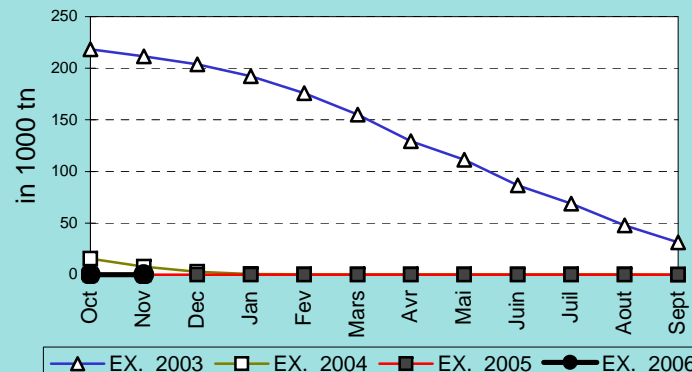
VIANDE BOVINE DESOSSEE



VIANDE DESOSSEE EN EQUIVALENT CARCASSES



TOTAL VIANDE EN EQUIVALENT CARCASSES



COMPARED WITH PREVIOUS MONTH

EU TOTAL	31-oct-09		30-sep-09		CHANGE IN QTY		CHANGE IN VALUE	
	QUANTITY (tn or hl)	VALUE (in Euro)	QUANTITY (tn or hl)	VALUE (In Euro)	ABSOLUTE (tn or hl)	%	ABSOLUTE (in Euro)	%
CLICK TOTALS FOR GRAPHICS	(a)	(b)	(c)	(d)	(e)=(a)-(c)	(f)=(e)/(c)*%	(g)=(b)-(d)	(h)=(g)/(d)*%
Blé panifiable	76.703	7.911.341	76.703	7.911.093			248	0%
Orge	925.380	94.444.835	925.343	94.441.255	37	0%	3.580	0%
Seigle								
Sorgho	501	50.792	502	50.812	0	0%	-20	0%
Mais	556.092	56.507.629	556.118	56.510.721	-26	0%	-3.092	0%
TOTAL CEREALES	1.558.676	158.914.597	1.558.665	158.913.880	11	0%	717	0%
TOTAL RIZ								
Alcool Public	1.490.634	55.270.411	1.601.004	59.353.415	-110.369	-7%	-4.083.004	-7%
Alcool Mixte	11.088	180.880	11.088	180.880				
TOTAL ALCOOL (HL 100%)	1.501.723	55.451.291	1.612.092	59.534.295	-110.369	-7%	-4.083.004	-7%
LEP	265.492	396.142.690	265.671	395.852.212	-179	0%	290.477	0%
Beurre	76.988	167.692.311	78.704	171.431.622	-1.716	-2%	-3.739.317	-2%
TOTAL LAIT ET BEURRE	342.480	563.835.001	344.375	567.283.834	-1.895	-1%	-3.448.833	-1%
Sucre blanc	34.830	11.227.656	34.832	11.228.054	-1	0%	-398	0%
Sucre brut								
TOTAL SUCRE	34.830	11.227.656	34.832	11.228.054	-1	0%	-398	0%
Bov. carc.								
Bov. des.								
Eq. carc.								
TOTAL EQ. CARCASSES								
GRAND TOTAL		789.428.545		796.960.064			-7.531.518	-1%

SOURCE :

The declarations of the Member States before controls.

COMPARED WITH PREVIOUS YEAR

EU TOTAL	31-oct-09		31-oct-08		CHANGE IN QTY		CHANGE IN VALUE	
	QUANTITY (tn or hl)	VALUE (in Euro)	QUANTITY (tn or hl)	VALUE (In Euro)	ABSOLUTE (tn or hl)	%	ABSOLUTE (in Euro)	%
CLICK TOTALS FOR GRAPHICS	(a)	(b)	(c)	(d)	(e)=(a)-(c)	(f)=(e)/(c)*%	(g)=(b)-(d)	(h)=(g)/(d)*%
Blé panifiable	76.703	7.911.341	37	3.302	76.666	208843%	7.908.039	239488%
Orge	925.380	94.444.835			925.380		94.444.835	
Seigle								
Sorgho	501	50.792			501		50.792	
Mais	556.092	56.507.629	22.958	2.254.229	533.134	2322%	54.253.400	2407%
TOTAL CEREALES	1.558.676	158.914.597	22.995	2.257.531	1.535.681	6678%	156.657.066	6939%
TOTAL RIZ								
Alcool Public	1.490.634	55.270.411	2.381.674	100.956.725	-891.040	-37%	-45.686.314	-45%
Alcool Mixte	11.088	180.880	11.966	185.790	-878	-7%	-4.910	-3%
TOTAL ALCOOL (HL 100%)	1.501.723	55.451.291	2.393.640	101.142.515	-891.917	-37%	-45.691.224	-45%
LEP	265.492	396.142.690			265.492		396.142.690	
Beurre	76.988	167.692.311			76.988		167.692.311	
TOTAL LAIT ET BEURRE	342.480	563.835.001			342.480		563.835.001	
Sucre blanc	34.830	11.227.656	318.254	106.401.668	-283.423	-89%	-95.174.012	-89%
Sucre brut			6.444	1.558.098	-6.444	-100%	-1.558.098	-100%
TOTAL SUCRE	34.830	11.227.656	324.698	107.959.766	-289.868	-89%	-96.732.110	-90%
Bov. carc.								
Bov. des.								
Eq. carc.								
TOTAL EQ. CARCASSES								
GRAND TOTAL		789.428.545		211.359.812			578.068.733	273%

SOURCE :

The declarations of the Member States before controls.

THE PUBLIC STORAGE FLASH REPORT AS AT						31-oct-09			
ESPAÑA									
PRODUCTS	YEAR-TO-DATE		OPENING BALANCE		CHANGE IN QTY		CHANGE IN VALUE		
	QUANTITY (in tonnes or hl)	VALUE (in Euro)	QUANTITY (in tonnes or hl)	VALUE (in Euro)	ABSOLUTE (in tonnes or hl)	%	ABSOLUTE (in Euro)	%	
	(a)	(b)	(c)	(d)	(e)=(a)-(c)	(f)=(e)/(c)*%	(g)=(b)-(d)	(h)=(g)/(d)*%	
Ble panifiable									
Orge									
Seigle									
Sorgho									
Mais									
TOTAL CEREALES									
RIZ									
Alcool Public	561.083	20.883.509	574.043	21.365.391	-12.960	-2%	-481.883	-2%	
Alcool Mixte									
TOT. ALCOOL (HL)	561.083	20.883.509	574.043	21.365.391	-12.960	-2%	-481.883	-2%	
LEP	1.603	2.442.748	1.603	2.442.752			-4	0%	
Beurre	9.335	20.336.764	9.336	20.338.968	-1	0%	-2.204	0%	
TOTAL L & B	10.938	22.779.512	10.939	22.781.720	-1	0%	-2.208	0%	
Sucre Blanc									
Sucre Brut									
TOTAL SUCRE									
Bov. carc.									
Bov. des.									
Eq. carc.									
TOTAL EQ. CARC.									
GRAND TOTAL		43.663.020		44.147.111			-484.091	-1%	

