

CHOOSE COUNTRY

EU TOTAL	YEAR-TO-DATE		OPENING BALANCE (1)		CHANGE IN QTY		CHANGE IN VALUE	
	QUANTITY (tn or hl)	VALUE (in Euro)	QUANTITY (tn or hl)	VALUE (In Euro)	ABSOLUTE (tn or hl)	%	ABSOLUTE (in Euro)	%
CLICK TOTALS FOR GRAPHICS	(a)	(b)	(c)	(d)	(e)=(a)-(c)	(f)=(e)/(c)*%	(g)=(b)-(d)	(h)=(g)/(d)*%
Blé panifiable								
Orge	165.326	16.717.618	165.326	16.717.611			6	0%
Seigle								
Sorgho								
Mais								
TOTAL CEREALES	165.326	16.717.618	165.326	16.717.611			6	0%
TOTAL RIZ								
Alcool Public	41.287	1.155.142	55.204	1.544.567	-13.917	-25%	-389.425	-25%
Alcool Mixte								
TOTAL ALCOOL (HL 100%)	41.287	1.155.142	55.204	1.544.567	-13.917	-25%	-389.425	-25%
LEP	53.555	79.830.823	65.663	97.846.309	-12.108	-18%	-18.015.487	-18%
Beurre	1	2.922	796	1.735.728	-795	-100%	-1.732.806	-100%
TOTAL LAIT ET BEURRE	53.557	79.833.745	66.460	99.582.038	-12.903	-19%	-19.748.293	-20%
Sucre Blanc								
Sucre Brut								
TOTAL SUCRE								
Bov. carc.								
Bov. des.								
Eq. carc.								
TOTAL EQ. CARCASSES								
GRAND TOTAL		97.706.505		117.844.217			-20.137.712	-17%

SOURCE : The declarations of the Member States before controls.

(1) Period 12/2011

quantities are expressed in
tonnes (alcohol in hl 100%)

ACCOUNTING VALUE OF THE PUBLIC INTERVENTION STOCKS AS AT :
(BEFORE THE COMPLEMENTARY DEPRECIATION)

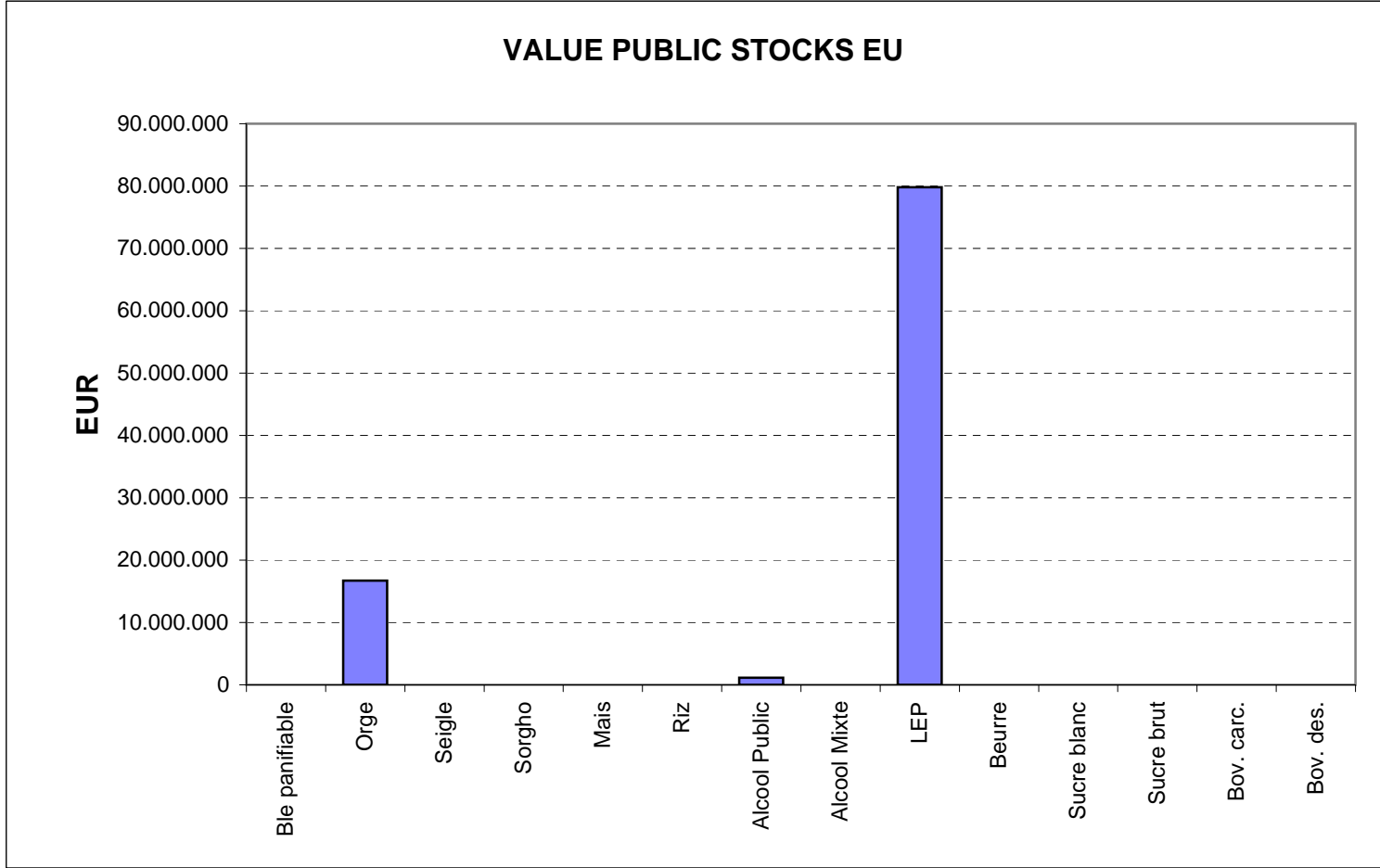
31-oct-11

AGRI I.4

G. MERTENS tel. 65910

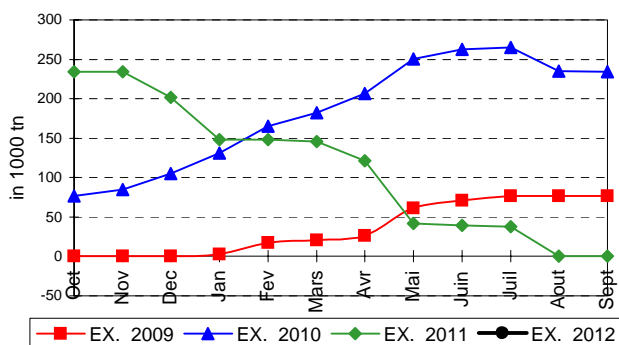
Produits		BE	BG	CZ	DK	DE	EE	IE	EL	ES	FR	IT	CY	LV	LT	LU	HU	MT	NL	OS	PL	PO	RO	SI	SK	FIN	SE	UK	TOTAL
BLE PANIF	quant.																												
	valeur																												
ORGE	quant.					16.856					397															75.350	64.820	7.904	
	valeur					1.694.032					40.182															7.633.695	6.566.934	782.775	
SEIGLE	quant.																												
	valeur																												
SORGHO	quant.																												
	valeur																												
MAIS	quant.																												
	valeur																												
TOT.CER	quant.					16.856					397															75.350	64.820	7.904	
RIZ	quant.																												
ALC.P.	quant.												7.112				34.175												
	valeur												198.920				956.222												
ALC.M.	quant.																												
	valeur																												
TOT.ALC.	quant.												7.112				34.175												
LEP	quant.	9.465		330		5.977	635	8.513			6.740				3.578				3.527		1	0				191	14.599		
	valeur	14.016.393		520.420		8.892.918	908.769	12.717.037			10.098.482				5.362.182				5.272.168		1.223	674				285.723	21.754.834		
BEURRE	quant.						1								1														
	valeur						1.124								1.798														
TOT L&B	quant.	9.465		330		5.977	636	8.513			6.740				3.578				3.527		1	0				191	14.599		
S. BLANC	quant.																												
S. BRUT	quant.																												
TOT. SUC	quant.																												
BOV.QUA	quant.																												
	valeur																												
BOV.DES	quant.																												
	valeur																												
EQ. CARC	quant.																												
TOT EQ	quant.																												
EU TOTAL	valeur	14.016.393		520.420		10.586.950	909.893	12.717.037			10.138.664		198.920		5.363.980		956.222		5.272.168		1.223	674				7.633.695	6.852.657	22.537.608	

PUBLIC INTERVENTION STOCKS

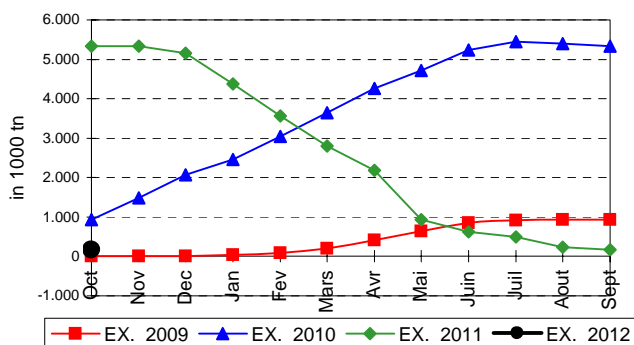


EVOLUTION IN QUANTITIES OF PUBLIC INTERVENTION STOCKS

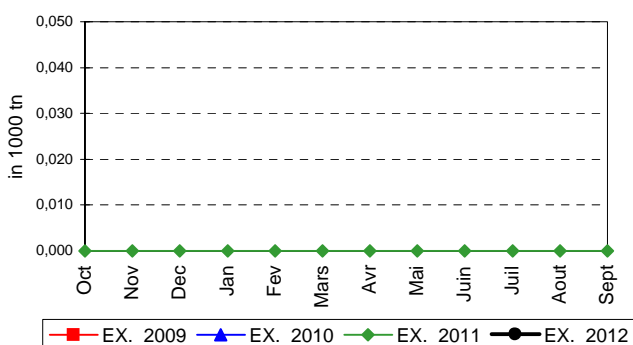
BLE TENDRE PANIFIABLE



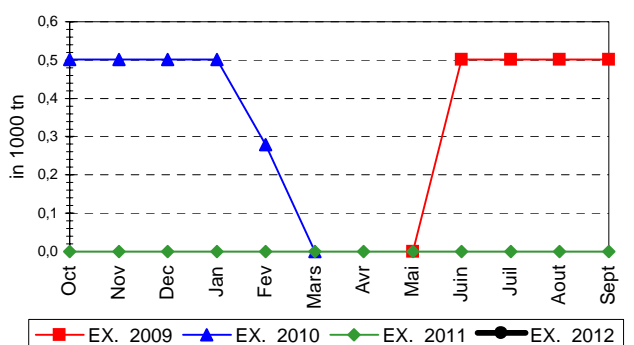
ORGE



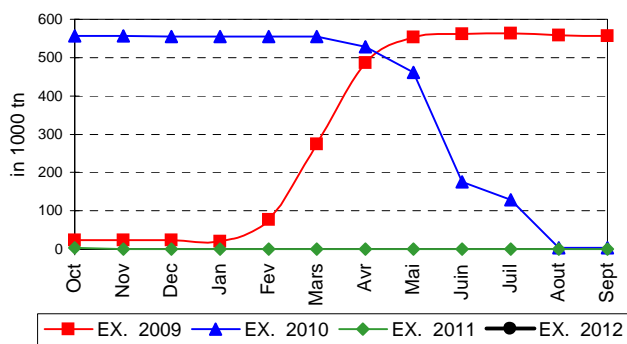
SEIGLE



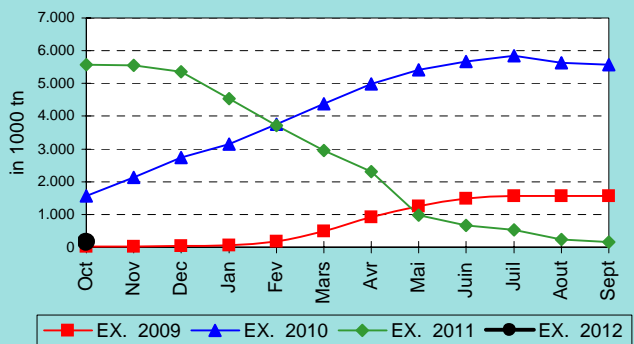
SORGHO



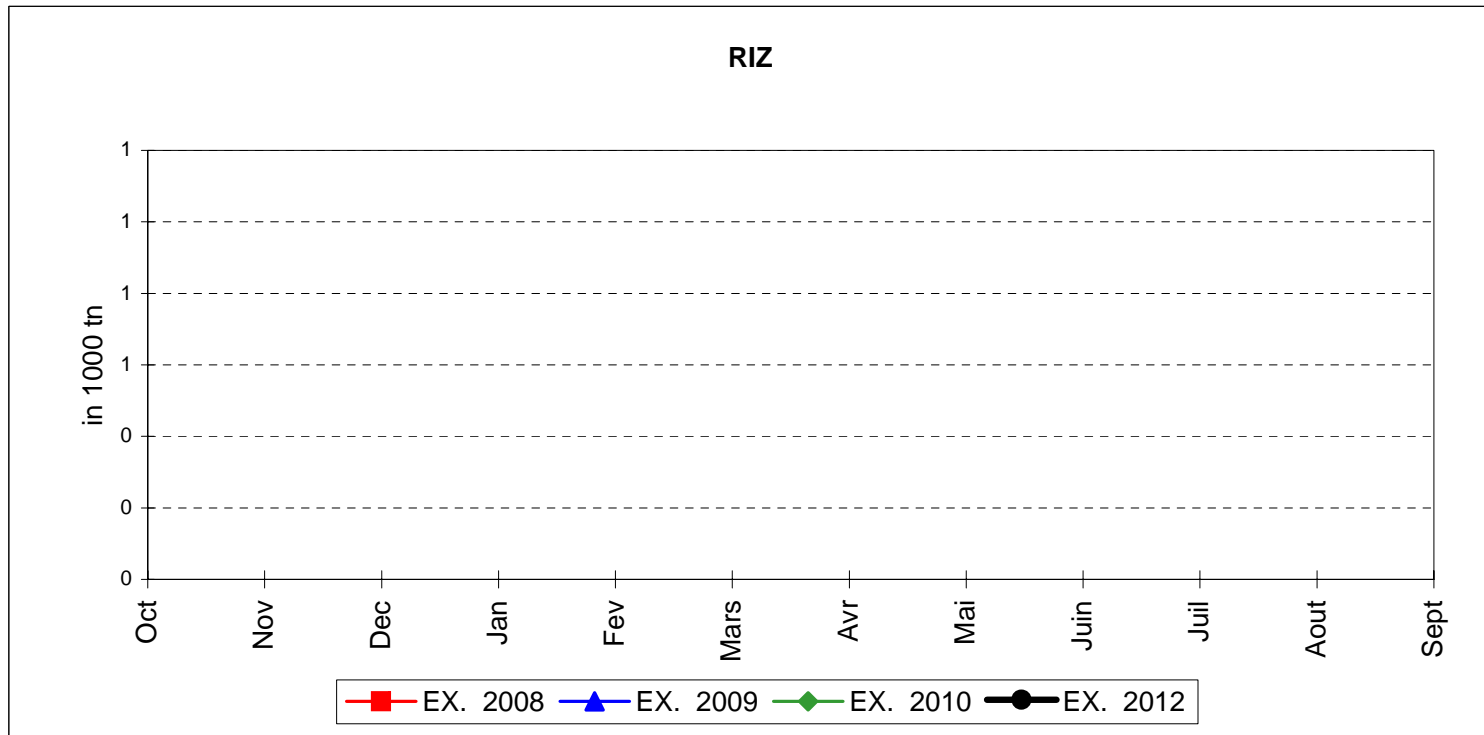
MAIS



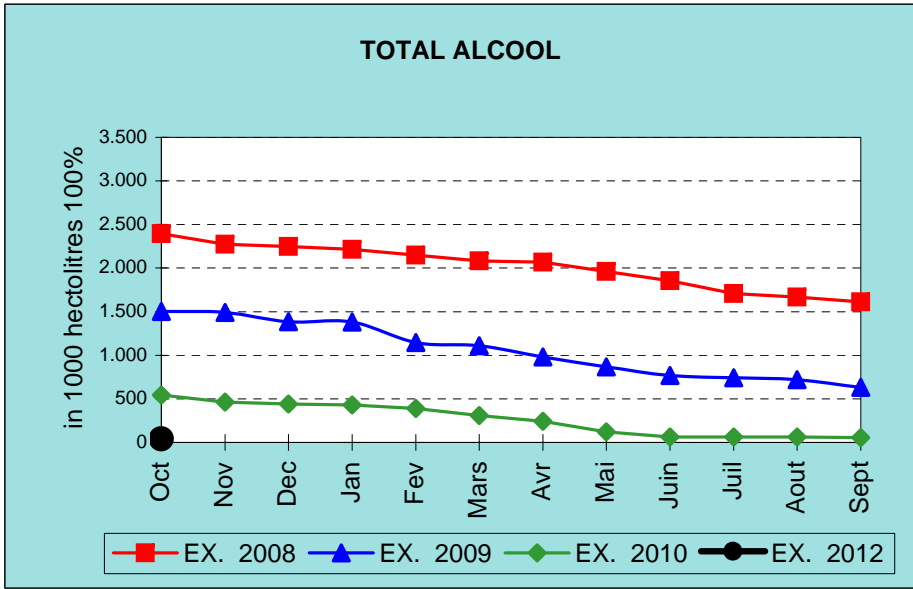
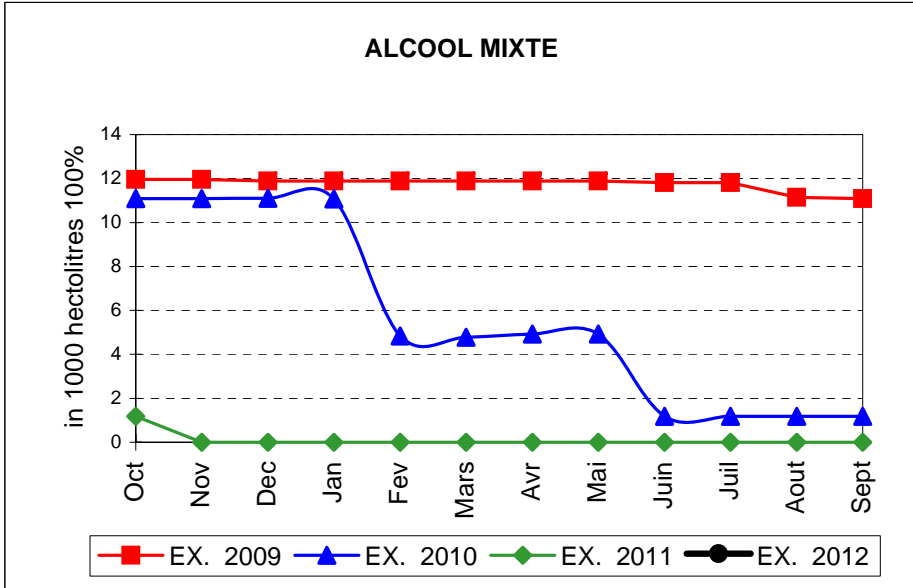
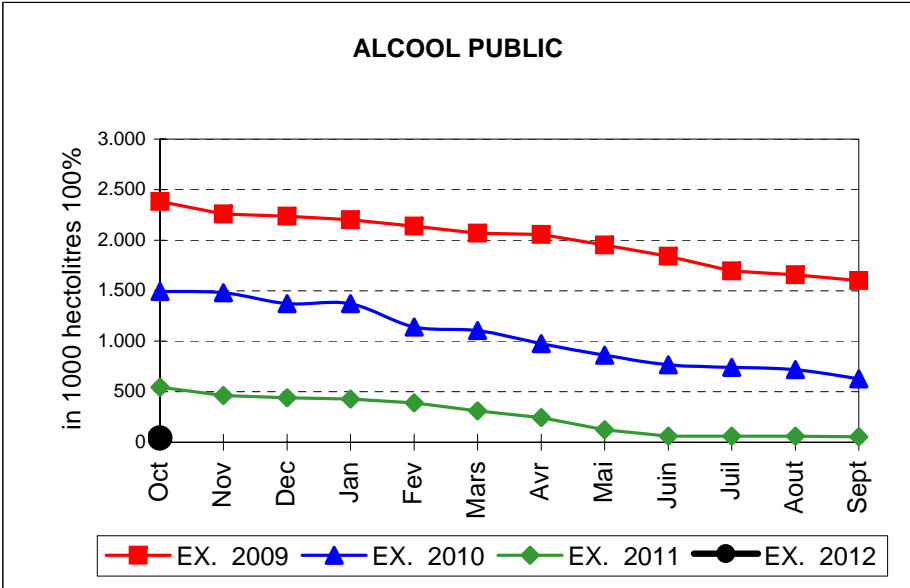
TOTAL CEREALES



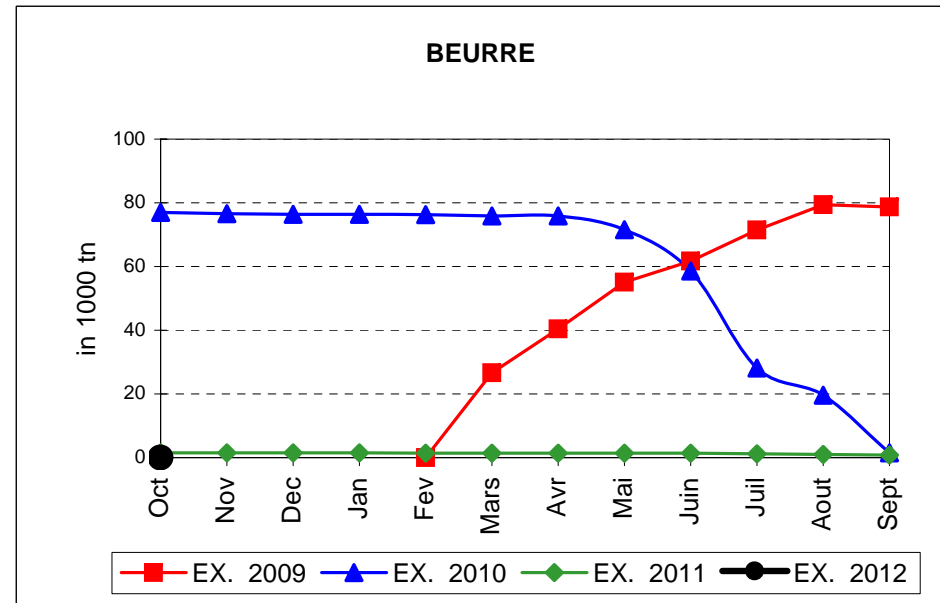
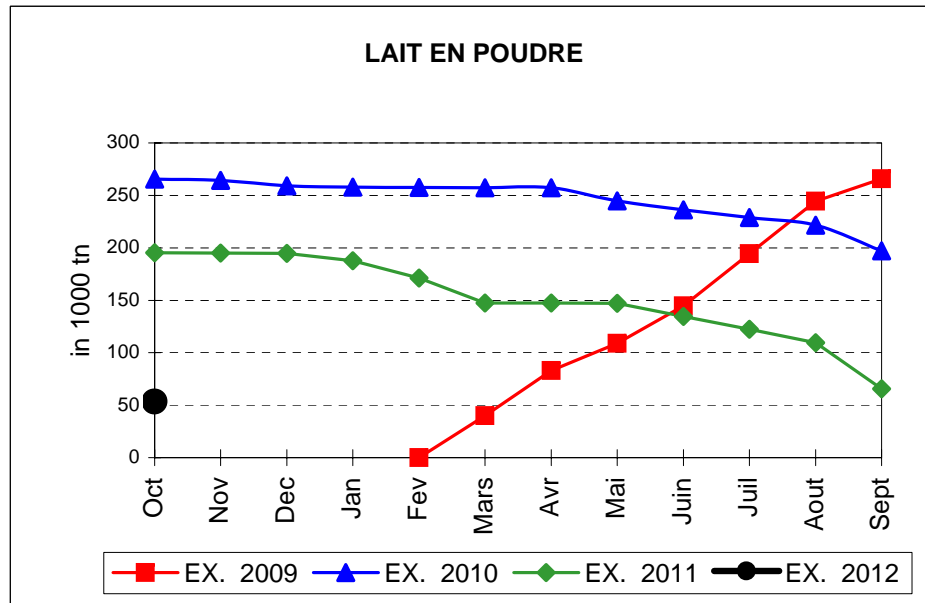
EVOLUTION IN QUANTITIES OF PUBLIC INTERVENTION STOCKS



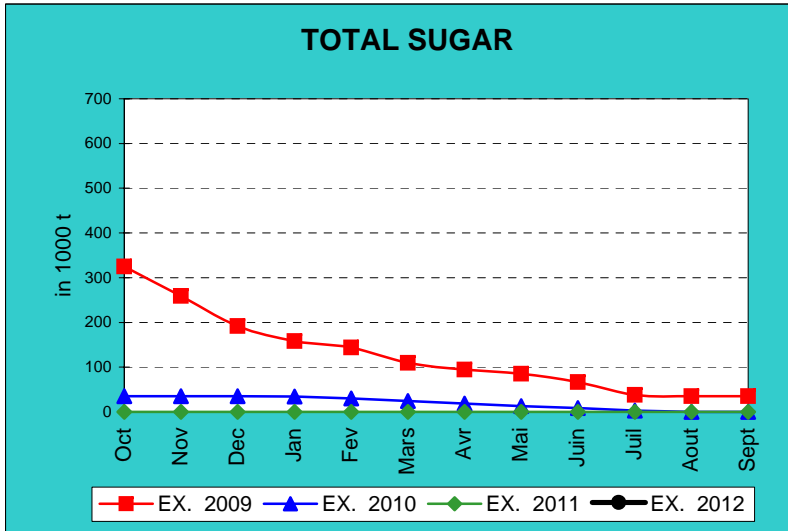
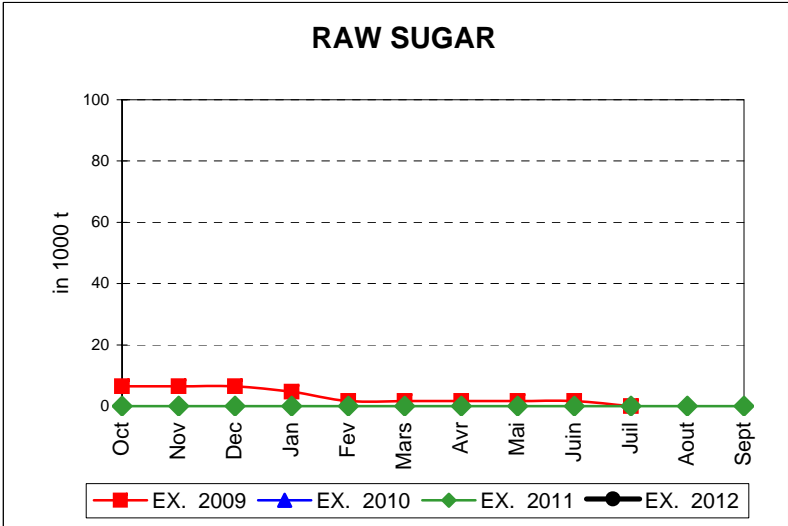
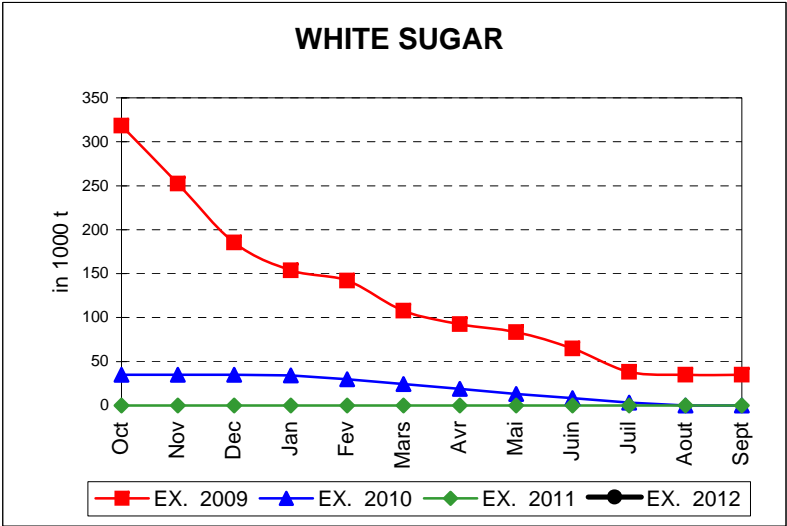
EVOLUTION IN QUANTITIES OF PUBLIC INTERVENTION STOCKS



EVOLUTION IN QUANTITIES OF PUBLIC INTERVENTION STOCKS

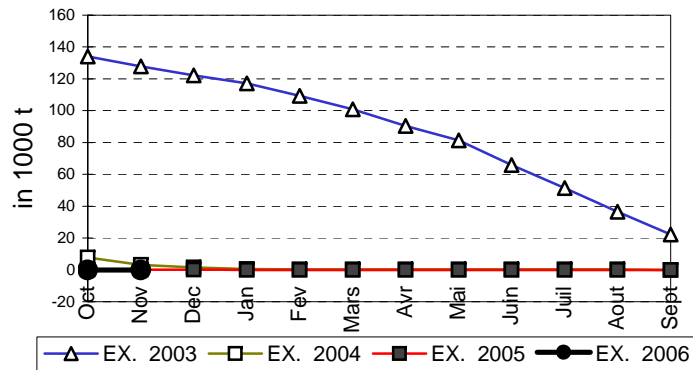


EVOLUTION IN QUANTITIES OF PUBLIC INTERVENTION STOCKS

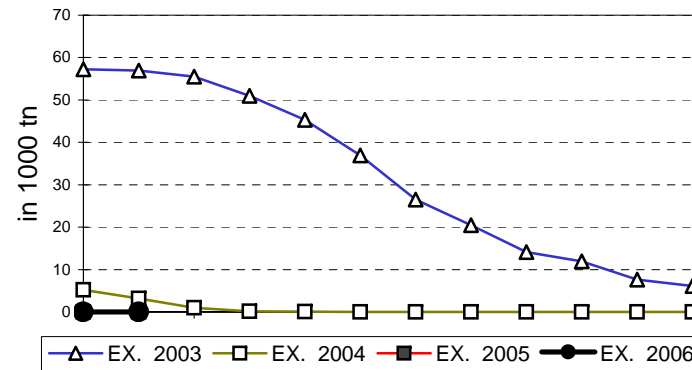


EVOLUTION IN QUANTITIES OF PUBLIC INTERVENTION STOCKS

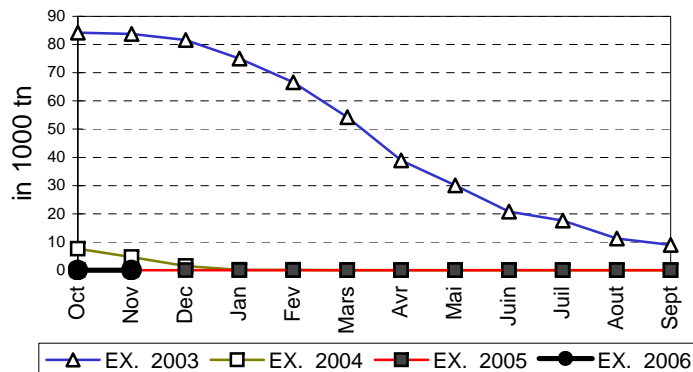
VIANDE BOVINE CARCASSES



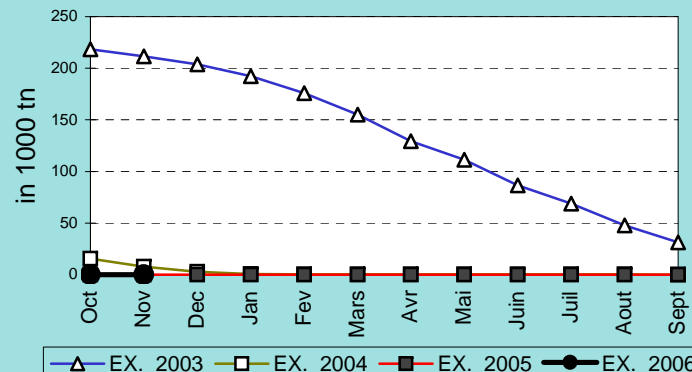
VIANDE BOVINE DESOSSEE



VIANDE DESOSSEE EN EQUIVALENT CARCASSES



TOTAL VIANDE EN EQUIVALENT CARCASSES



COMPARED WITH PREVIOUS MONTH

EU TOTAL	31-oct-11		30-sep-11		CHANGE IN QTY		CHANGE IN VALUE	
	QUANTITY (tn or hl)	VALUE (in Euro)	QUANTITY (tn or hl)	VALUE (In Euro)	ABSOLUTE (tn or hl)	%	ABSOLUTE (in Euro)	%
CLICK TOTALS FOR GRAPHICS	(a)	(b)	(c)	(d)	(e)=(a)-(c)	(f)=(e)/(c)*%	(g)=(b)-(d)	(h)=(g)/(d)*%
Blé panifiable								
Orge	165.326	16.717.618	165.326	16.717.611			6	0%
Seigle								
Sorgho								
Mais								
TOTAL CEREALES	165.326	16.717.618	165.326	16.717.611			6	0%
TOTAL RIZ								
Alcool Public	41.287	1.155.142	55.204	1.544.567	-13.917	-25%	-389.425	-25%
Alcool Mixte								
TOTAL ALCOOL (HL 100%)	41.287	1.155.142	55.204	1.544.567	-13.917	-25%	-389.425	-25%
LEP	53.555	79.830.823	65.663	97.846.309	-12.108	-18%	-18.015.487	-18%
Beurre	1	2.922	796	1.735.728	-795	-100%	-1.732.806	-100%
TOTAL LAIT ET BEURRE	53.557	79.833.745	66.460	99.582.038	-12.903	-19%	-19.748.293	-20%
Sucre blanc								
Sucre brut								
TOTAL SUCRE								
Bov. carc.								
Bov. des.								
Eq. carc.								
TOTAL EQ. CARCASSES								
GRAND TOTAL		97.706.505		117.844.217			-20.137.712	-17%

SOURCE : The declarations of the Member States before controls.

COMPARED WITH PREVIOUS YEAR

EU TOTAL	31-oct-11		31-oct-10		CHANGE IN QTY		CHANGE IN VALUE	
	QUANTITY (tn or hl)	VALUE (in Euro)	QUANTITY (tn or hl)	VALUE (In Euro)	ABSOLUTE (tn or hl)	%	ABSOLUTE (in Euro)	%
CLICK TOTALS FOR GRAPHICS	(a)	(b)	(c)	(d)	(e)=(a)-(c)	(f)=(e)/(c)*%	(g)=(b)-(d)	(h)=(g)/(d)*%
Blé panifiable			234.577	23.710.941	-234.577	-100%	-23.710.941	-100%
Orge	165.326	16.717.618	5.326.155	540.451.267	-5.160.829	-97%	-523.733.650	-97%
Seigle								
Sorgho								
Mais			3.142	318.234	-3.142	-100%	-318.234	-100%
TOTAL CEREALES	165.326	16.717.618	5.563.873	564.480.443	-5.398.547	-97%	-547.762.825	-97%
TOTAL RIZ								
Alcool Public	41.287	1.155.142	543.479	18.476.480	-502.192	-92%	-17.321.338	-94%
Alcool Mixte			1.173	4.645	-1.173	-100%	-4.645	-100%
TOTAL ALCOOL (HL 100%)	41.287	1.155.142	544.652	18.481.125	-503.365	-92%	-17.325.983	-94%
LEP	53.555	79.830.823	195.302	291.274.411	-141.747	-73%	-211.443.588	-73%
Beurre	1	2.922	1.544	3.341.537	-1.543	-100%	-3.338.615	-100%
TOTAL LAIT ET BEURRE	53.557	79.833.745	196.847	294.615.948	-143.290	-73%	-214.782.203	-73%
Sucre blanc			9	3.052	-9	-100%	-3.052	-100%
Sucre brut								
TOTAL SUCRE			9	3.052	-9	-100%	-3.052	-100%
Bov. carc.								
Bov. des.								
Eq. carc.								
TOTAL EQ. CARCASSES								
GRAND TOTAL		97.706.505		877.580.567			-779.874.062	-89%

SOURCE :

The declarations of the Member States before controls.

THE PUBLIC STORAGE FLASH REPORT AS AT						31-oct-11			
ESPAÑA									
PRODUCTS	YEAR-TO-DATE		OPENING BALANCE		CHANGE IN QTY		CHANGE IN VALUE		
	QUANTITY (in tonnes or hl)	VALUE (in Euro)	QUANTITY (in tonnes or hl)	VALUE (in Euro)	ABSOLUTE (in tonnes or hl)	%	ABSOLUTE (in Euro)	%	
	(a)	(b)	(c)	(d)	(e)=(a)-(c)	(f)=(e)/(c)*%	(g)=(b)-(d)	(h)=(g)/(d)*%	
Ble panifiable									
Orge									
Seigle									
Sorgho									
Mais									
TOTAL CEREALES									
RIZ									
Alcool Public									
Alcool Mixte									
TOT. ALCOOL (HL)									
LEP									
Beurre									
TOTAL L & B									
Sucre Blanc									
Sucre Brut									
TOTAL SUCRE									
Bov. carc.									
Bov. des.									
Eq. carc.									
TOTAL EQ. CARC.									
GRAND TOTAL									

31-oct-11

