

CHOOSE COUNTRY

EU TOTAL	YEAR-TO-DATE		OPENING BALANCE <sup>(1)</sup>		CHANGE IN QTY		CHANGE IN VALUE	
	QUANTITY (tn or hl)	VALUE (in Euro)	QUANTITY (tn or hl)	VALUE (in Euro)	ABSOLUTE (tn or hl)	%	ABSOLUTE (in Euro)	%
CLICK TOTALS FOR GRAPHICS	(a)	(b)	(c)	(d)	(e)=(a)-(c)	(f)=(e)/(c)*%	(g)=(b)-(d)	(h)=(g)/(d)*%
Blé panifiable								
Orge	9.003	912.073	9.003	912.073				
Seigle								
Sorgho								
Mais								
<b>TOTAL CEREALES</b>	<b>9.003</b>	<b>912.073</b>	<b>9.003</b>	<b>912.073</b>				
<b>TOTAL RIZ</b>								
Alcool Public								
Alcool Mixte								
<b>TOTAL ALCOOL (HL 100%)</b>								
LEP								
Beurre								
<b>TOTAL LAIT ET BEURRE</b>								
Sucre Blanc								
Sucre Brut								
<b>TOTAL SUCRE</b>								
Bov. carc.								
Bov. des.								
Eq. carc.								
<b>TOTAL EQ. CARCASSES</b>								
<b>GRAND TOTAL</b>		<b>912.073</b>		<b>912.073</b>				

SOURCE : The declarations of the Member States before controls.

(1) Period 12/2012

quantities are expressed in  
tonnes (alcohol in hl 100%)

ACCOUNTING VALUE OF THE PUBLIC INTERVENTION STOCKS AS AT :  
(BEFORE THE COMPLEMENTARY DEPRECIATION)

31-oct-12

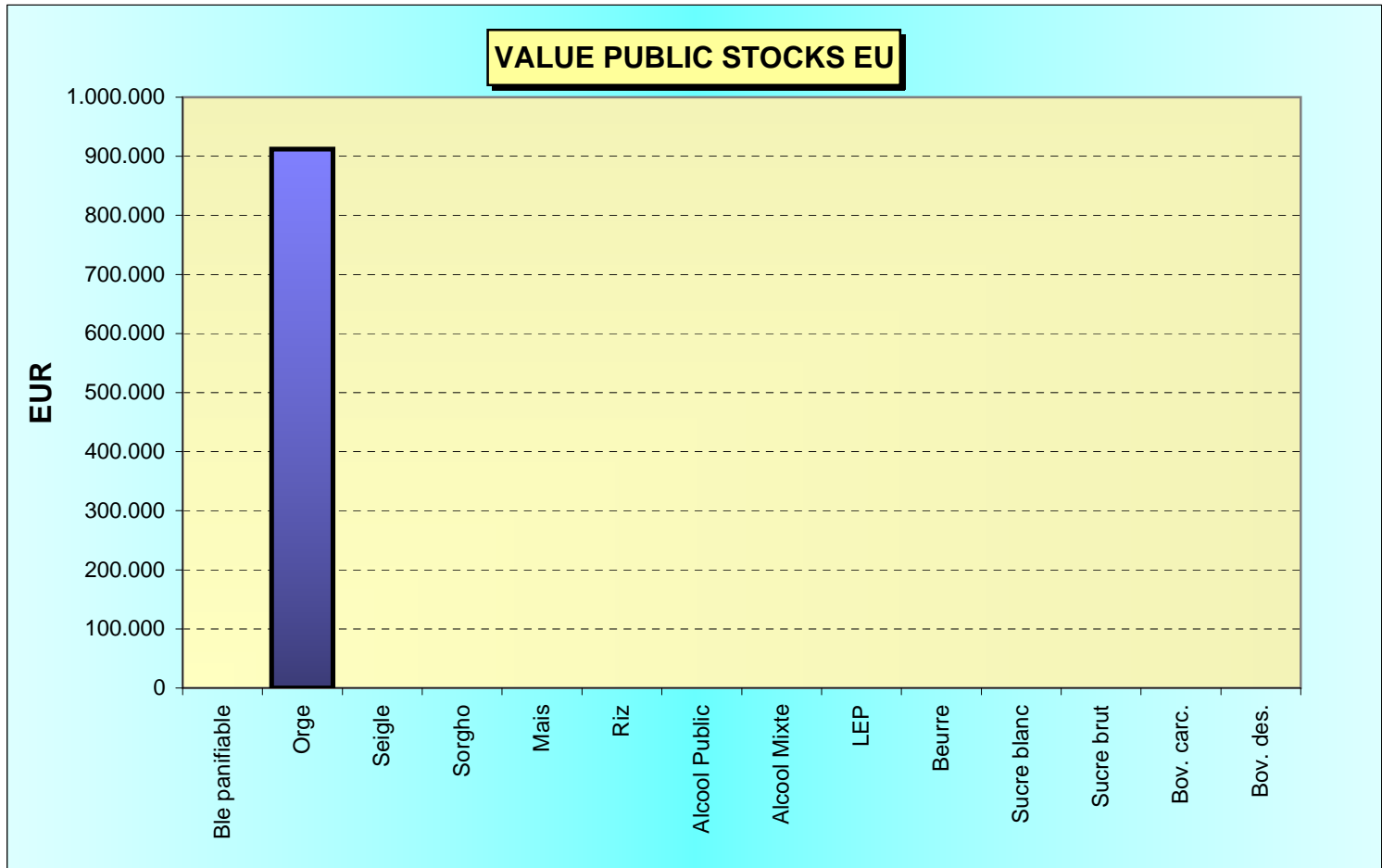
AGRI I.4

G. MERTENS tel. 65910

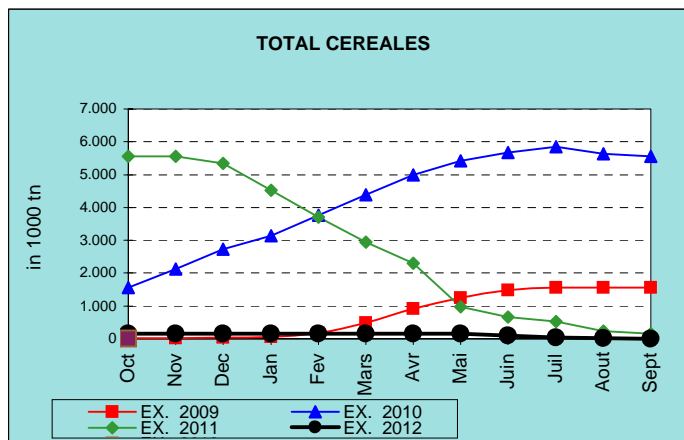
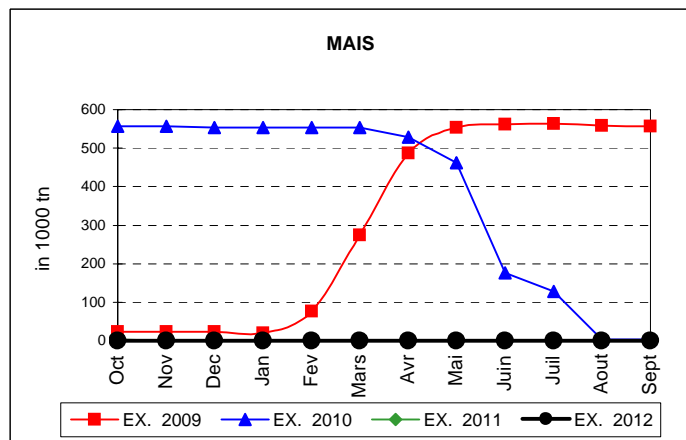
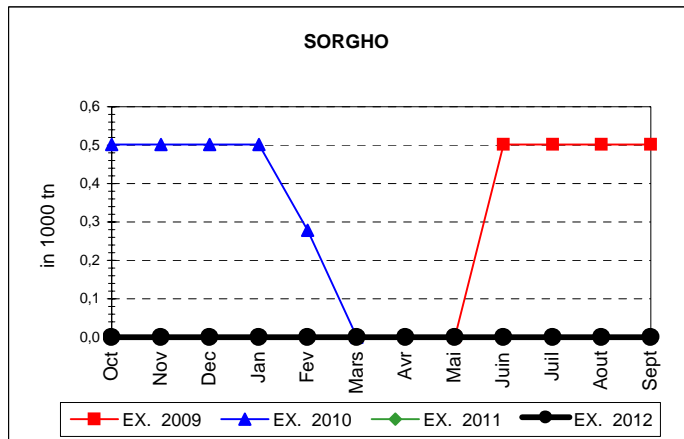
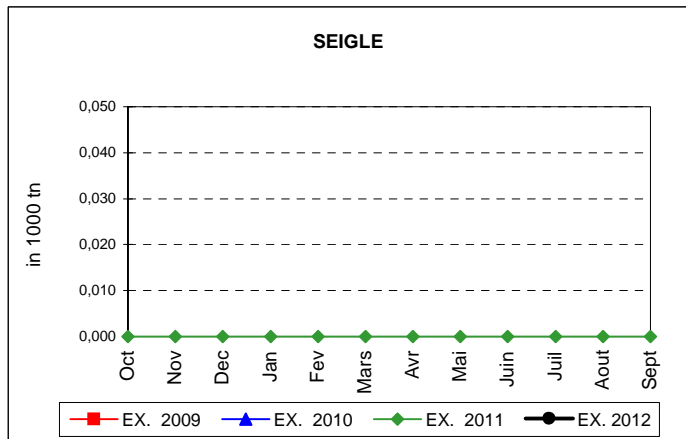
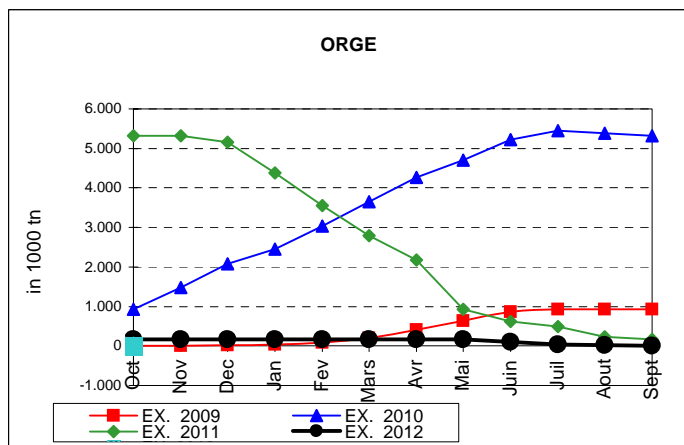
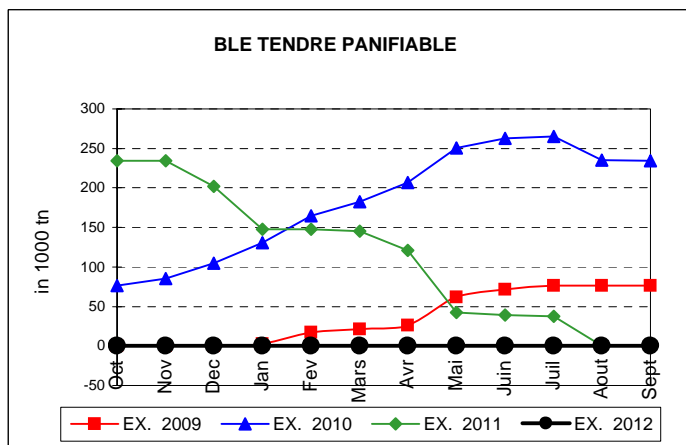
Produits		BE	BG	CZ	DK	DE	EE	IE	EL	ES	FR	IT	CY	LV	LT	LU	HU	MT	NL	OS	PL	PO	RO	SI	SK	FIN	SE	UK	TOTAL	
BLE PANIF	quant.																													
	valeur																													
ORGE	quant.										147																	8.856		
	valeur										14.893																	897.181		
SEIGLE	quant.																													
SEIGLE	valeur																													
SORGHO	quant.																													
SORGHO	valeur																													
MAIS	quant.																													
MAIS	valeur																													
TOT.CER	quant.										147																	8.856		
TOT.CER	valeur										14.893																	897.181		
RIZ	quant.																													
RIZ	valeur																													
ALC.P.	quant.																													
ALC.P.	valeur																													
ALC.M.	quant.																													
ALC.M.	valeur																													
TOT.ALC.	quant.																													
TOT.ALC.	valeur																													
LEP	quant.																													
LEP	valeur																													
BEURRE	quant.																													
BEURRE	valeur																													
TOT L&B	quant.																													
TOT L&B	valeur																													
S. BLANC	quant.																													
S. BLANC	valeur																													
S. BRUT	quant.																													
S. BRUT	valeur																													
TOT. SUC	quant.																													
TOT. SUC	valeur																													
BOV.QUA	quant.																													
BOV.QUA	valeur																													
BOV.DES	quant.																													
BOV.DES	valeur																													
EQ. CARC	quant.																													
EQ. CARC	valeur																													
TOT EQ	quant.																													
TOT EQ	valeur																													
EU TOTAL	valeur										14.893																	897.181	912.073	

31-oct-12

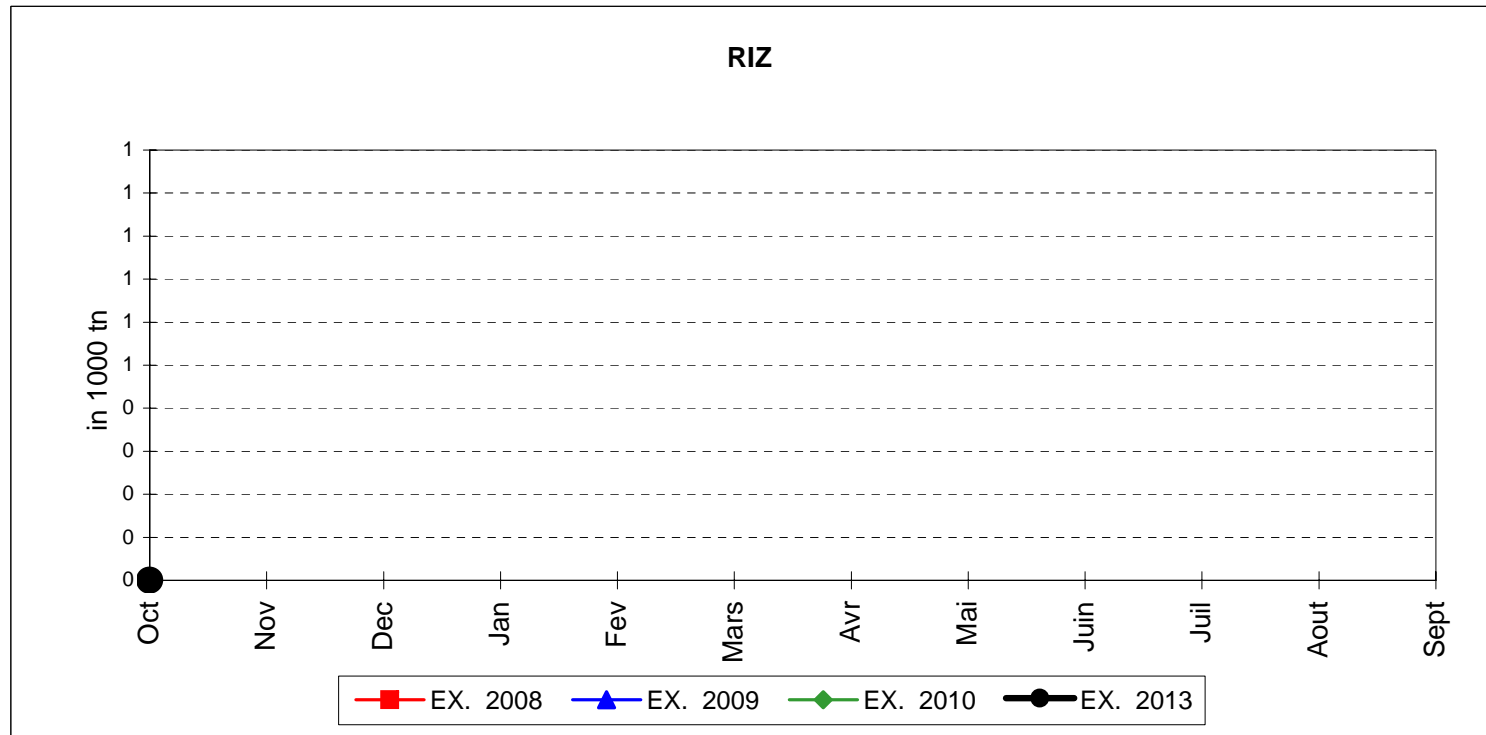
**PUBLIC INTERVENTION STOCKS**



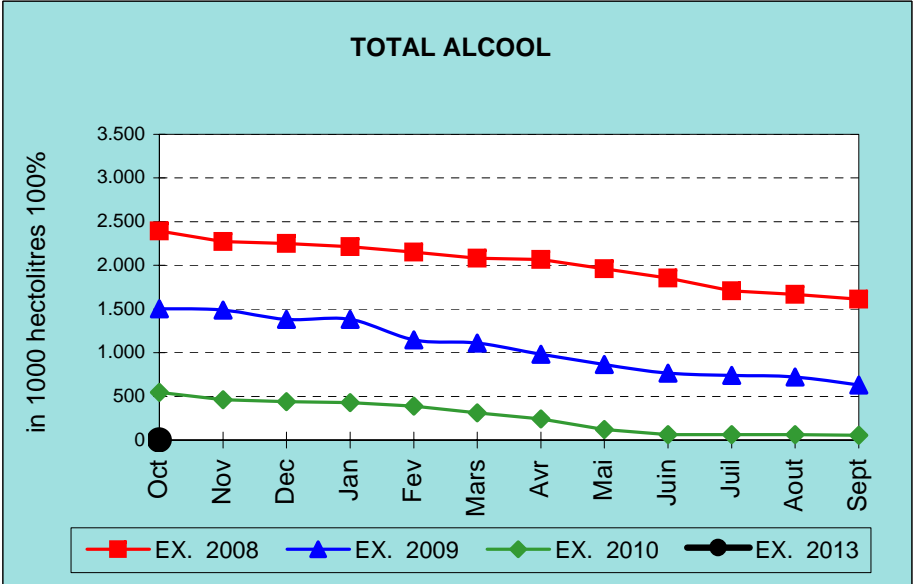
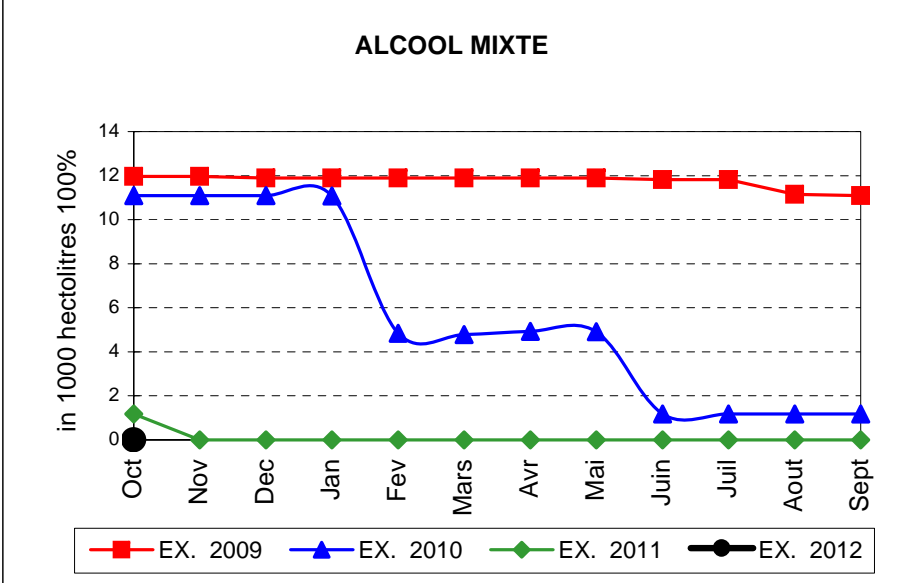
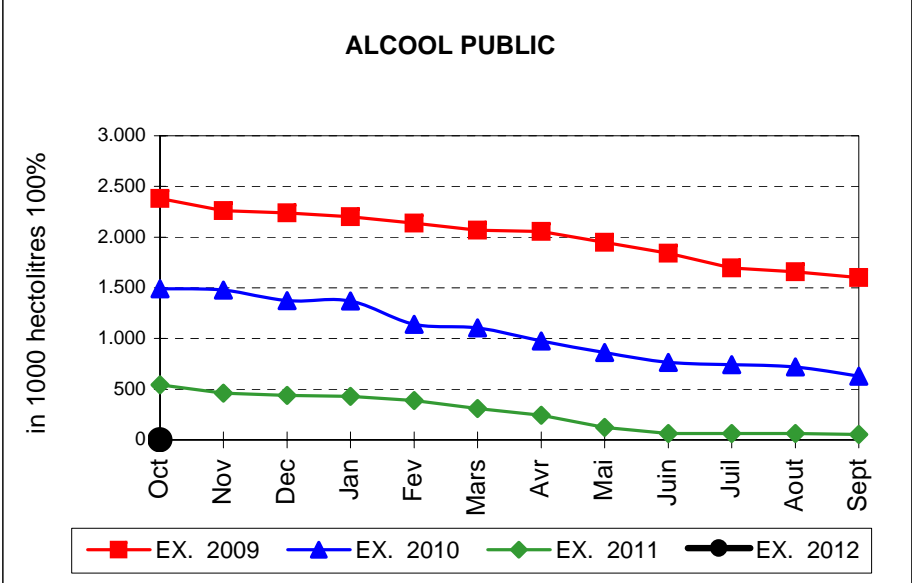
## EVOLUTION IN QUANTITIES OF PUBLIC INTERVENTION STOCKS



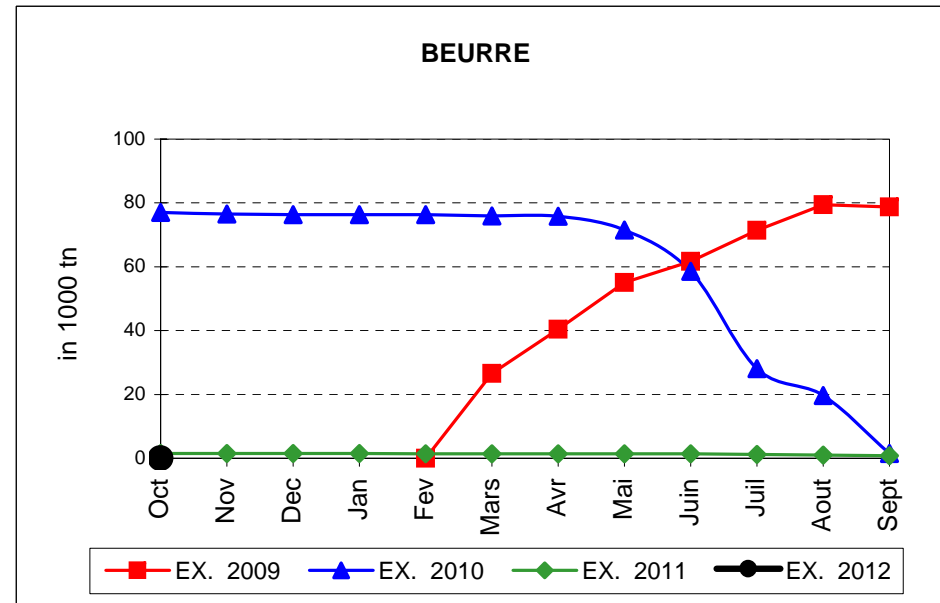
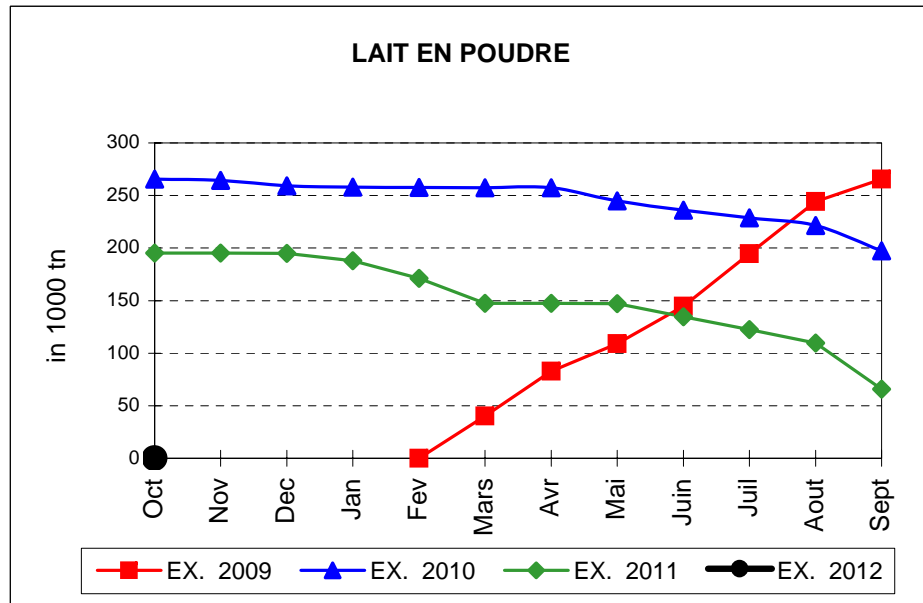
## EVOLUTION IN QUANTITIES OF PUBLIC INTERVENTION STOCKS



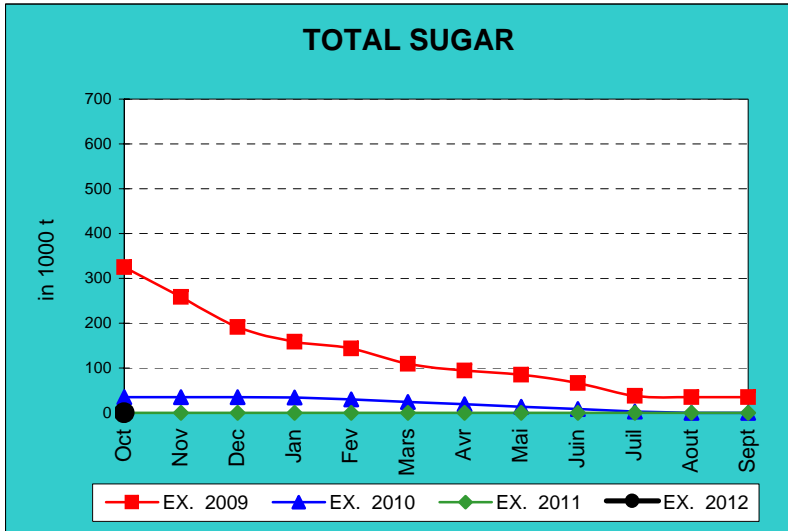
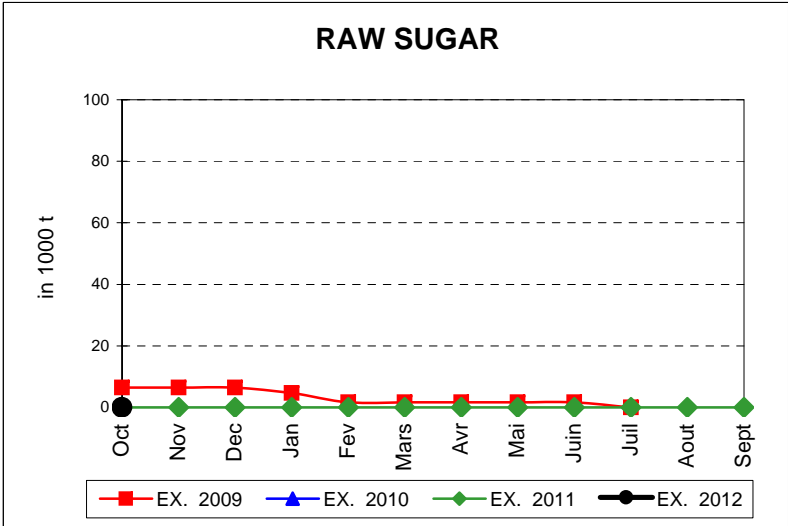
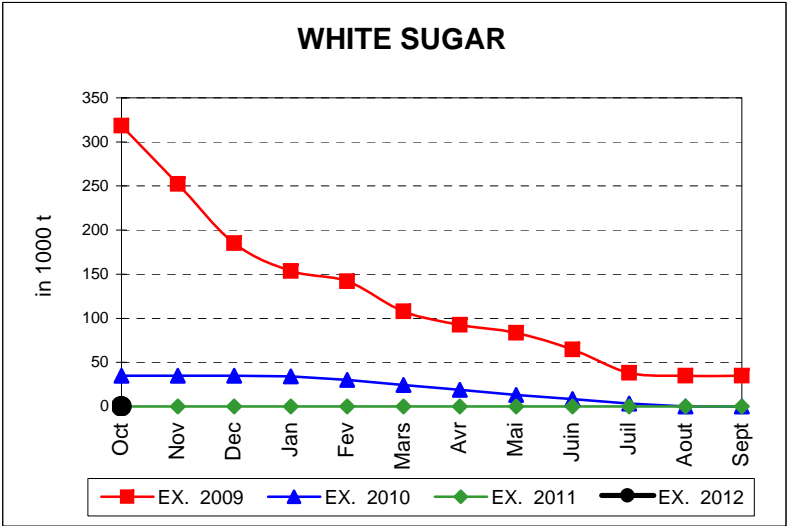
# EVOLUTION IN QUANTITIES OF PUBLIC INTERVENTION STOCKS



## EVOLUTION IN QUANTITIES OF PUBLIC INTERVENTION STOCKS



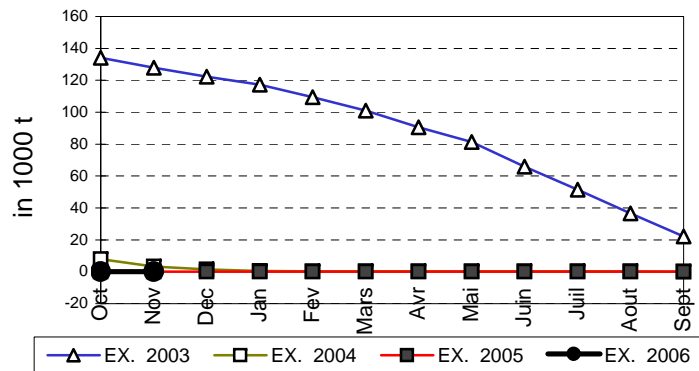
# EVOLUTION IN QUANTITIES OF PUBLIC INTERVENTION STOCKS



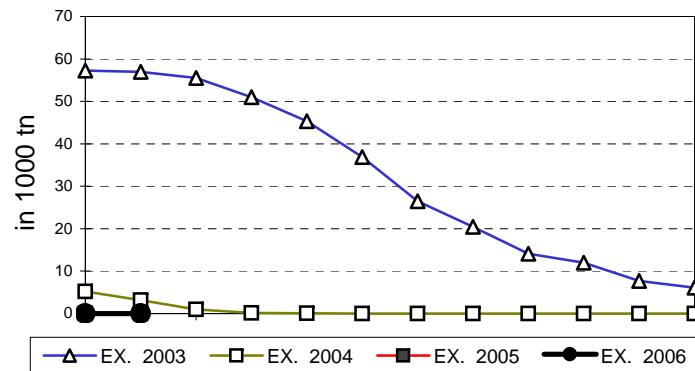


## EVOLUTION IN QUANTITIES OF PUBLIC INTERVENTION STOCKS

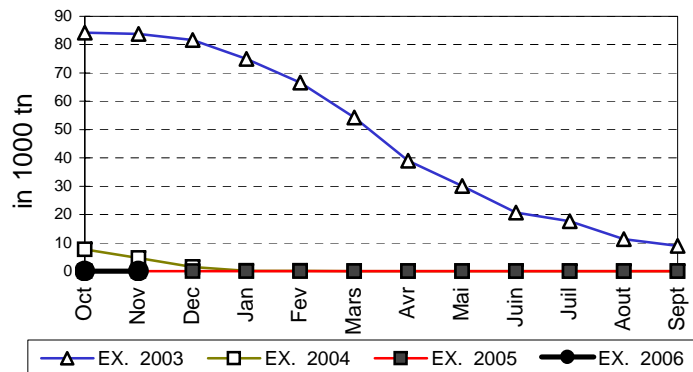
### VIANDE BOVINE CARCASSES



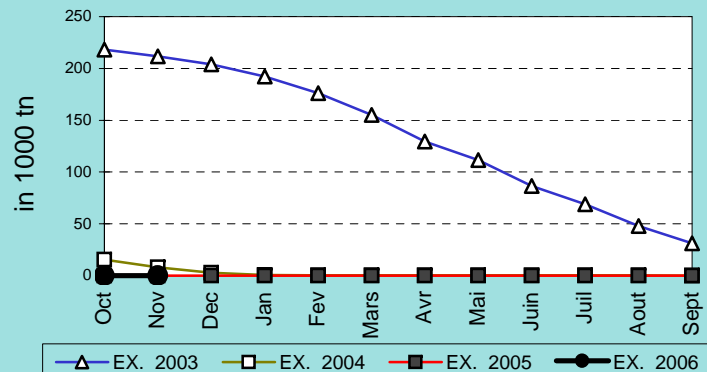
### VIANDE BOVINE DESOSSEE



### VIANDE DESOSSEE EN EQUIVALENT CARCASSES



### TOTAL VIANDE EN EQUIVALENT CARCASSES



## COMPARED WITH PREVIOUS MONTH

EU TOTAL	31-oct-12		30-sep-12		CHANGE IN QTY		CHANGE IN VALUE	
	QUANTITY (tn or hl)	VALUE (in Euro)	QUANTITY (tn or hl)	VALUE (In Euro)	ABSOLUTE (tn or hl)	%	ABSOLUTE (in Euro)	%
CLICK TOTALS FOR GRAPHICS	(a)	(b)	(c)	(d)	(e)=(a)-(c)	(f)=(e)/(c)*%	(g)=(b)-(d)	(h)=(g)/(d)*%
Blé panifiable								
Orge	9.003	912.073	9.003	912.073				
Seigle								
Sorgho								
Mais								
<b>TOTAL CEREALES</b>	<b>9.003</b>	<b>912.073</b>	<b>9.003</b>	<b>912.073</b>				
<b>TOTAL RIZ</b>								
Alcool Public								
Alcool Mixte								
<b>TOTAL ALCOOL (HL 100%)</b>								
LEP								
Beurre								
<b>TOTAL LAIT ET BEURRE</b>								
Sucre blanc								
Sucre brut								
<b>TOTAL SUCRE</b>								
Bov. carc.								
Bov. des.								
Eq. carc.								
<b>TOTAL EQ. CARCASSES</b>								
<b>GRAND TOTAL</b>		<b>912.073</b>		<b>912.073</b>				

SOURCE :

The declarations of the Member States before controls.

## COMPARED WITH PREVIOUS YEAR

EU TOTAL	31-oct-12		31-oct-11		CHANGE IN QTY		CHANGE IN VALUE	
	QUANTITY (tn or hl)	VALUE (in Euro)	QUANTITY (tn or hl)	VALUE (In Euro)	ABSOLUTE (tn or hl)	%	ABSOLUTE (in Euro)	%
CLICK TOTALS FOR GRAPHICS	(a)	(b)	(c)	(d)	(e)=(a)-(c)	(f)=(e)/(c)*%	(g)=(b)-(d)	(h)=(g)/(d)*%
<b>Blé panifiable</b>								
<b>Orge</b>	9.003	912.073	165.326	16.717.618	-156.324	-95%	-15.805.545	-95%
<b>Seigle</b>								
<b>Sorgho</b>								
<b>Mais</b>								
<b>TOTAL CEREALES</b>	<b>9.003</b>	<b>912.073</b>	<b>165.326</b>	<b>16.717.618</b>	<b>-156.324</b>	<b>-95%</b>	<b>-15.805.545</b>	<b>-95%</b>
<b>TOTAL RIZ</b>								
<b>Alcool Public</b>			41.287	1.155.142	-41.287	-100%	-1.155.142	-100%
<b>Alcool Mixte</b>								
<b>TOTAL ALCOOL (HL 100%)</b>			<b>41.287</b>	<b>1.155.142</b>	<b>-41.287</b>	<b>-100%</b>	<b>-1.155.142</b>	<b>-100%</b>
<b>LEP</b>			53.555	79.830.823	-53.555	-100%	-79.830.823	-100%
<b>Beurre</b>			1	2.922	-1	-100%	-2.922	-100%
<b>TOTAL LAIT ET BEURRE</b>			<b>53.557</b>	<b>79.833.745</b>	<b>-53.557</b>	<b>-100%</b>	<b>-79.833.745</b>	<b>-100%</b>
<b>Sucre blanc</b>								
<b>Sucre brut</b>								
<b>TOTAL SUCRE</b>								
<b>Bov. carc.</b>								
<b>Bov. des.</b>								
<b>Eq. carc.</b>								
<b>TOTAL EQ. CARCASSES</b>								
<b>GRAND TOTAL</b>		<b>912.073</b>		<b>97.706.505</b>			<b>-96.794.432</b>	<b>-99%</b>

SOURCE :

The declarations of the Member States before controls.

THE PUBLIC STORAGE FLASH REPORT AS AT										31-oct-12	
ESPAÑA											
PRODUCTS	YEAR-TO-DATE		OPENING BALANCE		CHANGE IN QTY		CHANGE IN VALUE				
	QUANTITY (in tonnes or hl)	VALUE Euro (in)	QUANTITY (in tonnes or hl)	VALUE (in Euro)	ABSOLUTE (in tonnes or hl)	%	ABSOLUTE Euro (in)	%			
	(a)	(b)	(c)	(d)	(e)=(a)-(c)	(f)=(e)/(c)*%	(g)=(b)-(d)	(h)=(g)/(d)*%			
Ble panifiable											
Orge											
Seigle											
Sorgho											
Mais											
<b>TOTAL CEREALES</b>											
<b>RIZ</b>											
Alcool Public											
Alcool Mixte											
<b>TOT. ALCOOL (HL)</b>											
LEP											
Beurre											
<b>TOTAL L &amp; B</b>											
Sucre Blanc											
Sucre Brut											
<b>TOTAL SUCRE</b>											
Bov. carc.											
Bov. des.											
Eq. carc.											
<b>TOTAL EQ. CARC.</b>											
<b>GRAND TOTAL</b>											

31-oct-12

