

CHOOSE COUNTRY

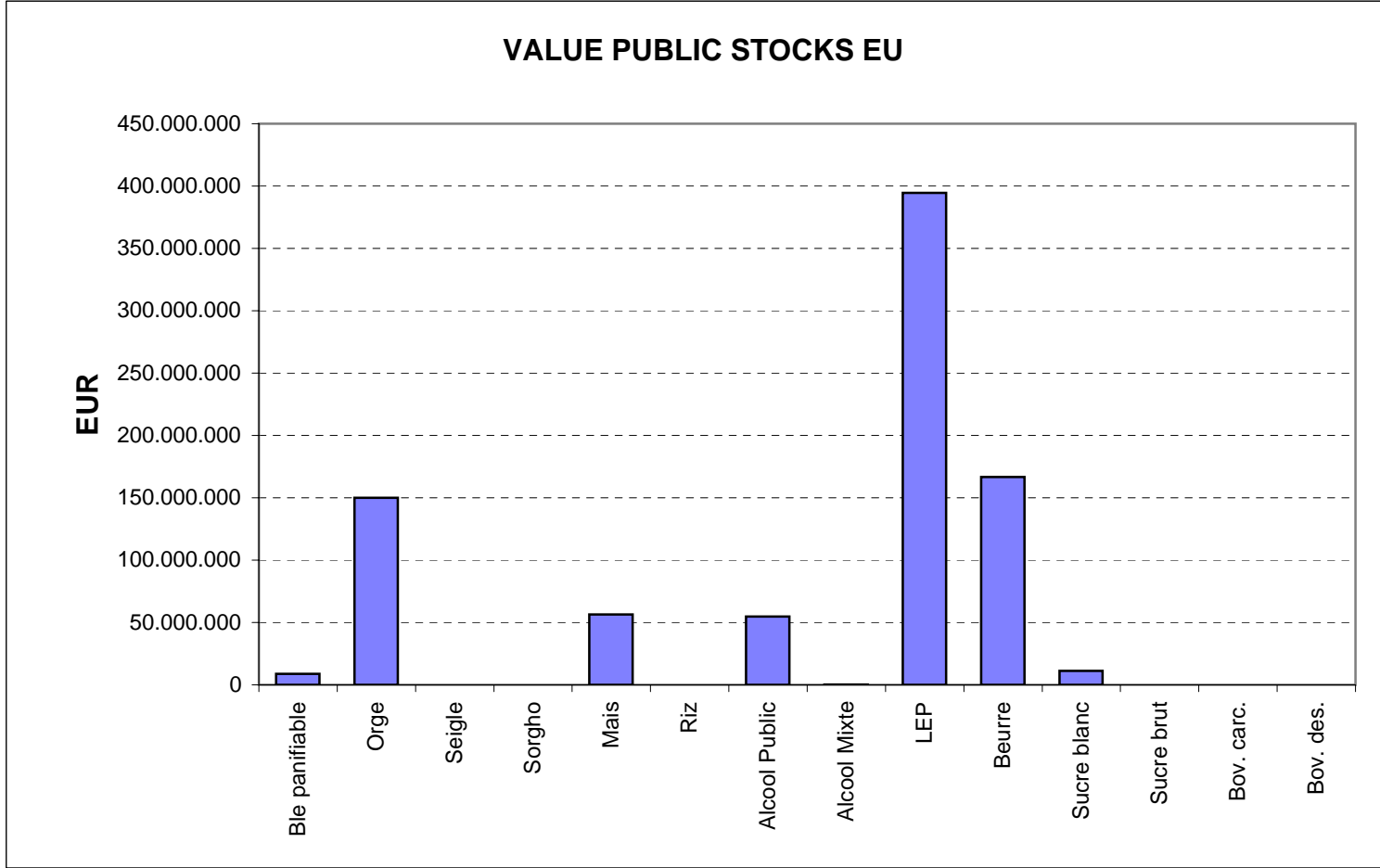
EU TOTAL	YEAR-TO-DATE		OPENING BALANCE (1)		CHANGE IN QTY		CHANGE IN VALUE	
	QUANTITY (tn or hl)	VALUE (in Euro)	QUANTITY (tn or hl)	VALUE (In Euro)	ABSOLUTE (tn or hl)	%	ABSOLUTE (in Euro)	%
CLICK TOTALS FOR GRAPHICS	(a)	(b)	(c)	(d)	(e)=(a)-(c)	(f)=(e)/(c)*%	(g)=(b)-(d)	(h)=(g)/(d)*%
<b>Blé panifiable</b>	85.094	8.786.891	76.703	7.911.093	8.391	11%	875.798	11%
<b>Orge</b>	1.484.231	150.051.305	925.385	94.445.665	558.847	60%	55.605.640	59%
<b>Seigle</b>								
<b>Sorgho</b>	501	50.792	502	50.812	0	0%	-20	0%
<b>Mais</b>	556.092	56.507.629	556.111	56.510.040	-19	0%	-2.410	0%
<b>TOTAL CEREALES</b>	<b>2.125.918</b>	<b>215.396.616</b>	<b>1.558.701</b>	<b>158.917.609</b>	<b>567.218</b>	<b>36%</b>	<b>56.479.007</b>	<b>36%</b>
<b>TOTAL RIZ</b>								
<b>Alcool Public</b>	1.478.534	54.820.049	1.600.049	59.312.261	-121.515	-8%	-4.492.212	-8%
<b>Alcool Mixte</b>	11.088	180.880	11.067	180.503	21	0%	377	0%
<b>TOTAL ALCOOL (HL 100%)</b>	<b>1.489.622</b>	<b>55.000.929</b>	<b>1.611.116</b>	<b>59.492.764</b>	<b>-121.493</b>	<b>-8%</b>	<b>-4.491.835</b>	<b>-8%</b>
<b>LEP</b>	264.347	394.429.941	268.527	400.661.815	-4.179	-2%	-6.231.874	-2%
<b>Beurre</b>	76.556	166.750.056	78.688	171.396.018	-2.132	-3%	-4.645.961	-3%
<b>TOTAL LAIT ET BEURRE</b>	<b>340.903</b>	<b>561.179.997</b>	<b>347.215</b>	<b>572.057.832</b>	<b>-6.312</b>	<b>-2%</b>	<b>-10.877.835</b>	<b>-2%</b>
<b>Sucre Blanc</b>	34.830	11.227.656	34.080	10.975.054	750	2%	252.603	2%
<b>Sucre Brut</b>								
<b>TOTAL SUCRE</b>	<b>34.830</b>	<b>11.227.656</b>	<b>34.080</b>	<b>10.975.054</b>	<b>750</b>	<b>2%</b>	<b>252.603</b>	<b>2%</b>
<b>Bov. carc.</b>								
<b>Bov. des.</b>								
<b>Eq. carc.</b>								
<b>TOTAL EQ. CARCASSES</b>								
<b>GRAND TOTAL</b>		<b>842.805.199</b>		<b>801.443.260</b>			<b>41.361.939</b>	<b>5%</b>

SOURCE : The declarations of the Member States before controls.

(1) Period 13/2009 annual declaration

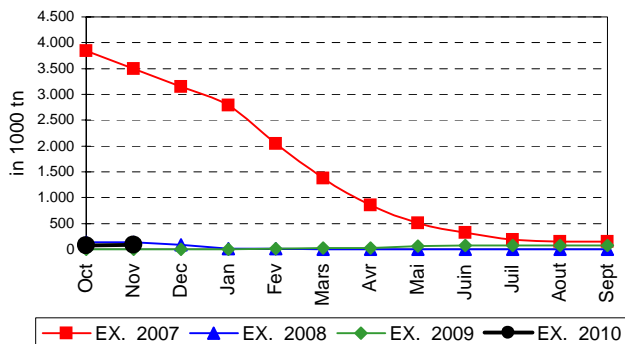
Produits		BE	BG	CZ	DK	DE	EE	IE	EL	ES	FR	IT	CY	LV	LT	LU	HU	MT	NL	OS	PL	PO	RO	SI	SK	FIN	SE	UK	TOTAL	
BLE PANIF	quant.		3.013	40.375													30.405				1.382				9.171	748			85.094	
	valeur		305.224	4.236.129														3.080.349				140.010				949.788	75.390			8.786.891
ORGE	quant.	8.536		169.645		603.355	9.180							1.006	88.528		136.372			6.852	118.512				24.083	247.090	71.074		1.484.231	
	valeur	851.249		17.827.971		60.251.029	926.120							71.429	8.943.974		13.815.811			694.224	11.937.740				2.508.478	25.022.799	7.200.484		150.051.305	
SEIGLE	quant.																													
	valeur																													
SORGHO	quant.																	501											501	
	valeur																	50.792												50.792
MAIS	quant.																									110.404			556.092	
	valeur																									11.359.489			56.507.629	
<b>TOT.CER</b>	<b>quant.</b>	<b>8.536</b>	<b>3.013</b>	<b>210.020</b>		<b>603.355</b>	<b>9.180</b>							<b>1.006</b>	<b>88.528</b>		<b>612.966</b>			<b>6.852</b>	<b>119.894</b>				<b>143.659</b>	<b>247.837</b>	<b>71.074</b>		<b>2.125.918</b>	
RIZ	quant.																													
	valeur																													
ALC.P.	quant.								60.269	549.013	341.251	393.448	7.285				55.146												1.478.534	
	valeur								2.229.340	20.434.263	12.629.712	14.549.700	269.556				2.040.404												54.820.049	
ALC.M.	quant.										1.017	10.071																	11.088	
	valeur										4.026	176.854																	180.880	
<b>TOT.ALC.</b>	<b>quant.</b>								<b>60.269</b>	<b>549.013</b>	<b>342.268</b>	<b>403.519</b>	<b>7.285</b>				<b>55.146</b>												<b>1.489.622</b>	
LEP	quant.	24.998		3.766		63.775	2.634	32.146		1.438	60.814					10.344			19.860		20.549	2.755				1.552	3.614	16.102	264.347	
	valeur	37.017.659		5.932.845		94.890.599	3.768.210	48.016.974		2.191.311	91.117.112					15.503.069			29.689.359		30.469.181	4.124.027				2.324.663	5.412.002	23.972.930	394.429.941	
BEURRE	quant.	3.234		527		9.894	1.153	14.272		9.336	13.266					1.838			11.541		1.901	5.079					4.516	76.556		
	valeur	7.048.838		1.200.445		21.567.767	2.355.675	31.111.813		20.338.943	28.902.317					4.005.779			25.158.335		4.146.093	11.071.712					9.842.340	166.750.056		
<b>TOT L&amp;B</b>	<b>quant.</b>	<b>28.231</b>		<b>4.293</b>		<b>73.669</b>	<b>3.787</b>	<b>46.418</b>		<b>10.774</b>	<b>74.080</b>				<b>12.181</b>			<b>31.401</b>		<b>22.449</b>	<b>7.834</b>				<b>1.552</b>	<b>3.614</b>	<b>20.618</b>	<b>340.903</b>		
S. BLANC	quant.	1.109		2.138				1.392				30.191																	34.830	
	valeur	324.441		720.950				404.975				9.777.291																	11.227.656	
S. BRUT	quant.																													
	valeur																													
<b>TOT. SUC</b>	<b>quant.</b>	<b>1.109</b>		<b>2.138</b>				<b>1.392</b>				<b>30.191</b>																	<b>34.830</b>	
BOV.QUA	quant.																													
	valeur																													
BOV.DES	quant.																													
	valeur																													
EQ. CARC	quant.																													
<b>TOT EQ</b>	<b>quant.</b>																													
<b>EU TOTAL</b>	<b>valeur</b>	<b>45.242.186</b>	<b>305.224</b>	<b>29.918.340</b>		<b>176.709.395</b>	<b>7.050.005</b>	<b>79.533.761</b>	<b>2.229.340</b>	<b>42.964.517</b>	<b>132.653.167</b>	<b>24.503.845</b>	<b>269.556</b>	<b>71.428</b>	<b>28.452.821</b>	<b>64.135.495</b>	<b>54.847.694</b>	<b>694.224</b>	<b>46.693.024</b>	<b>17.862.813</b>					<b>14.817.755</b>	<b>27.422.852</b>	<b>12.612.486</b>	<b>33.815.271</b>	<b>842.805.199</b>	

**PUBLIC INTERVENTION STOCKS**

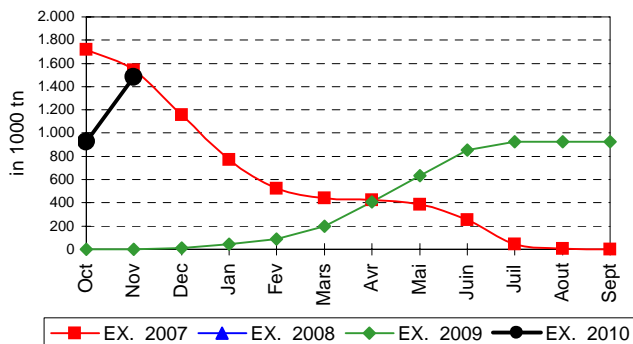


## EVOLUTION IN QUANTITIES OF PUBLIC INTERVENTION STOCKS

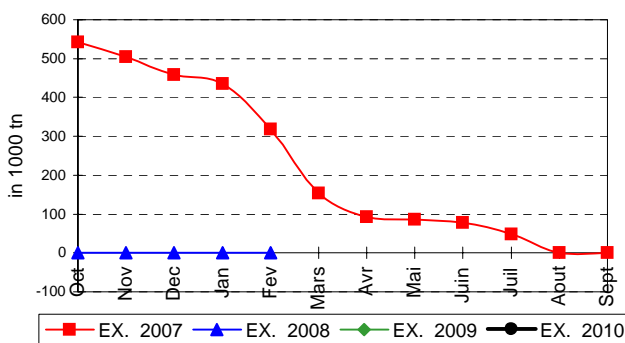
### BLE TENDRE PANIFIABLE



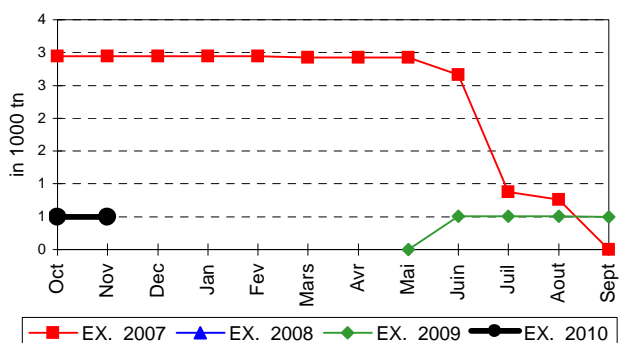
### ORGE



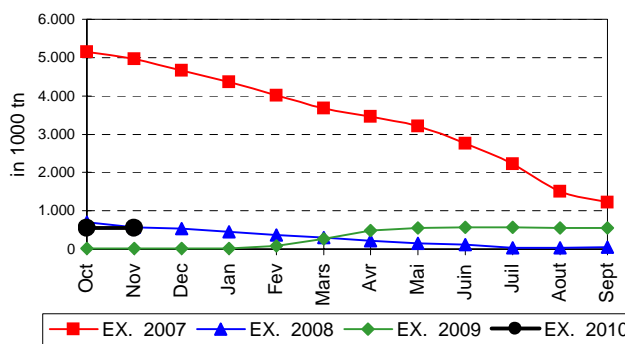
### SEIGLE



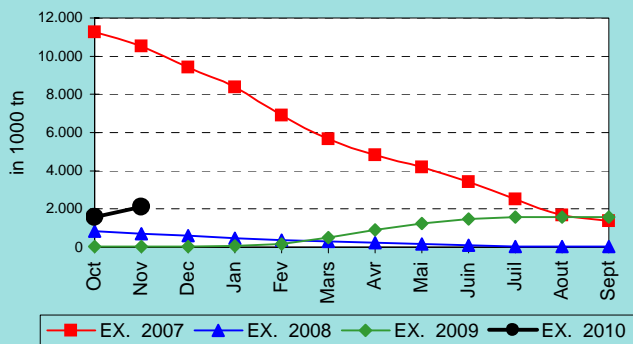
### SORGHO



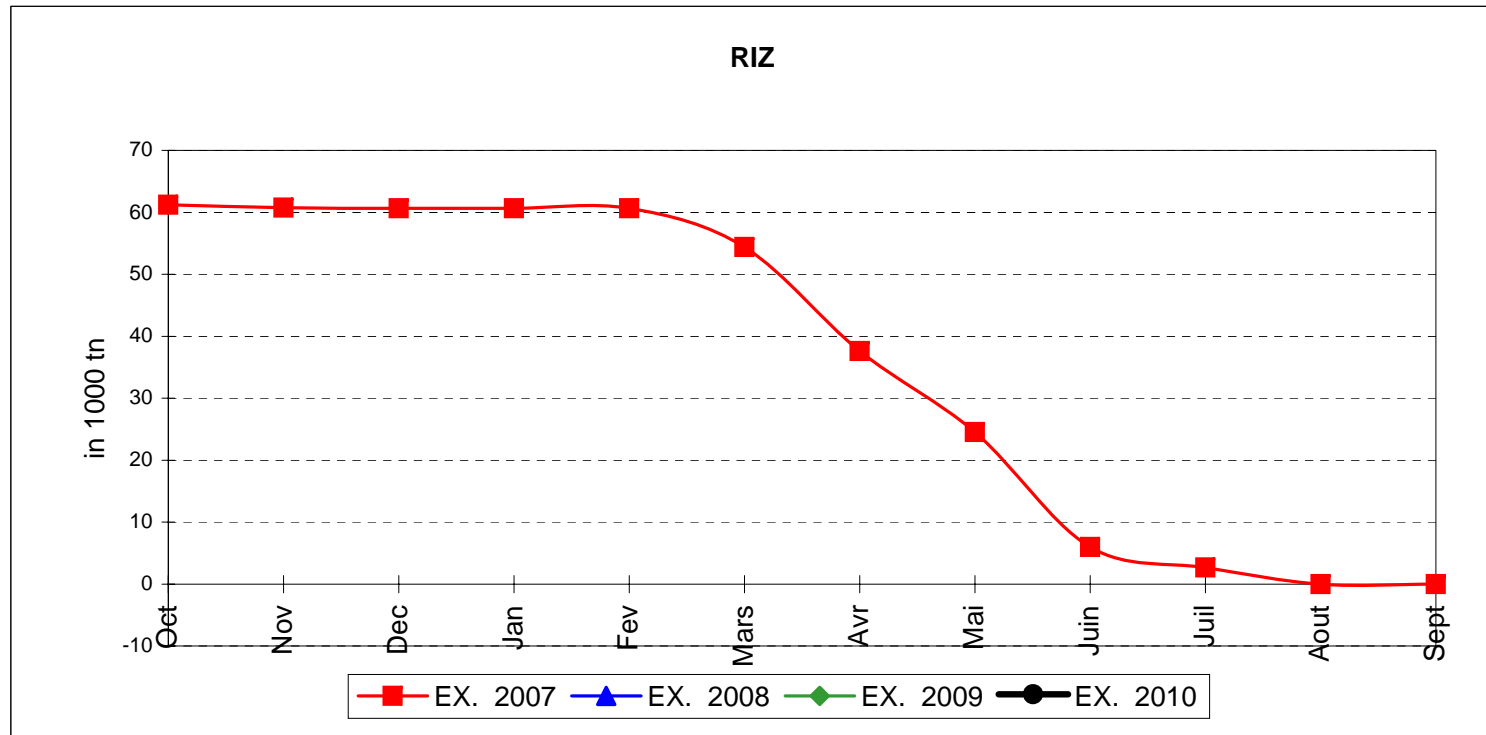
### MAIS



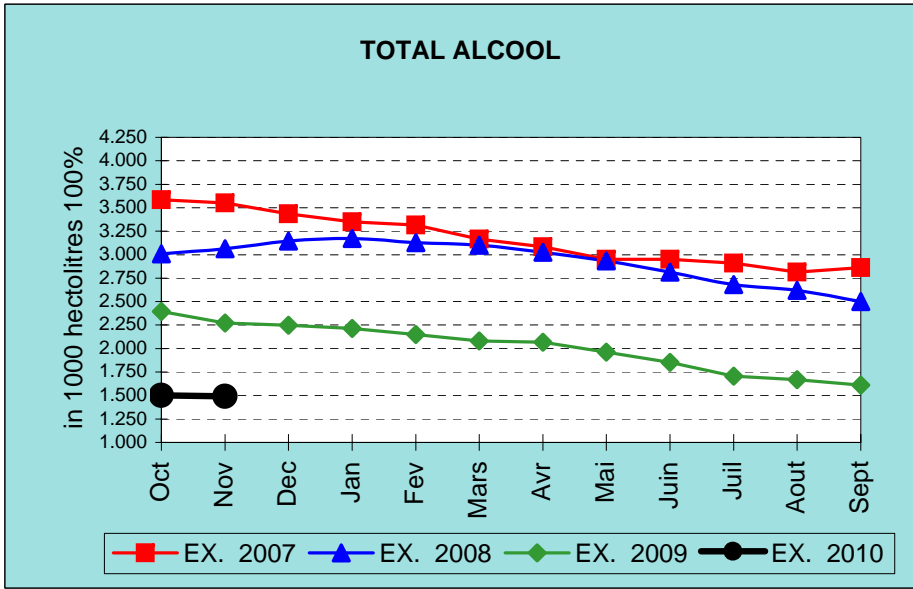
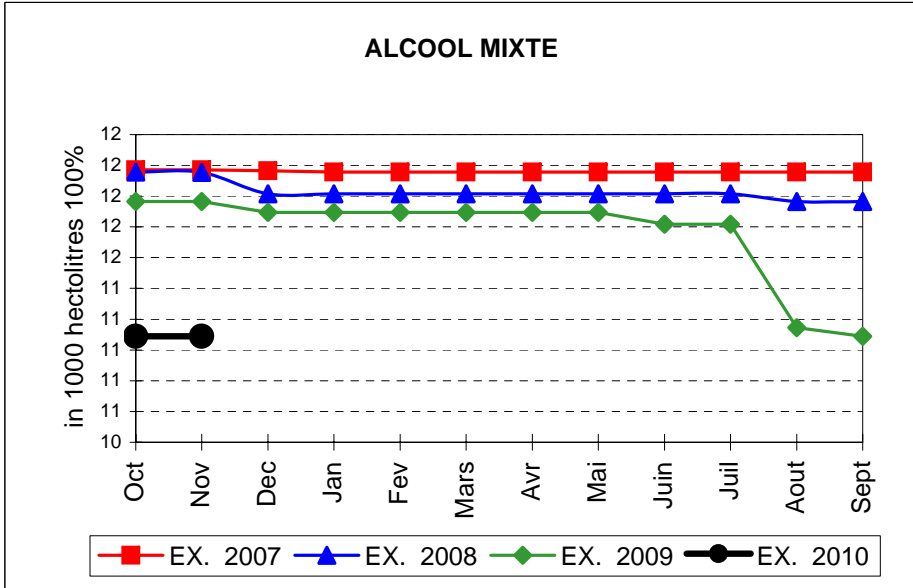
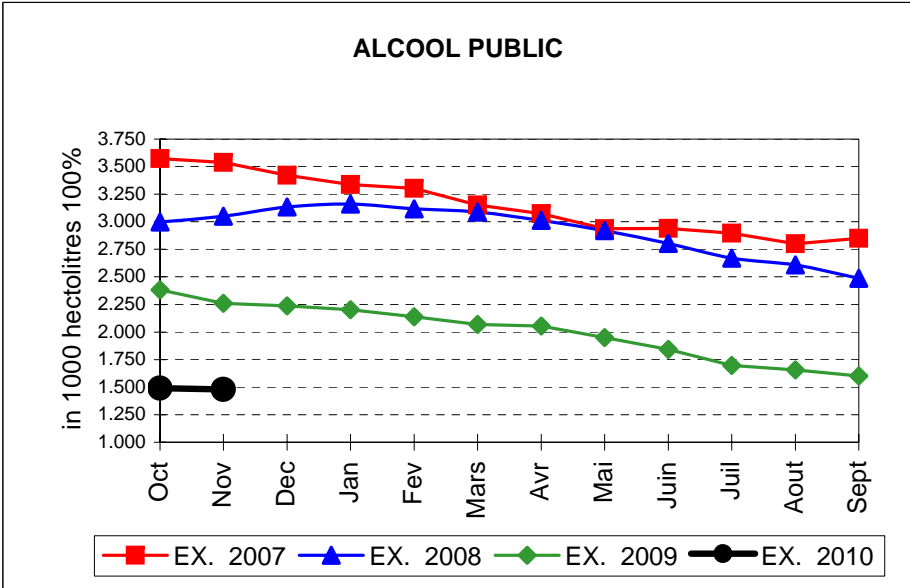
### TOTAL CEREALES



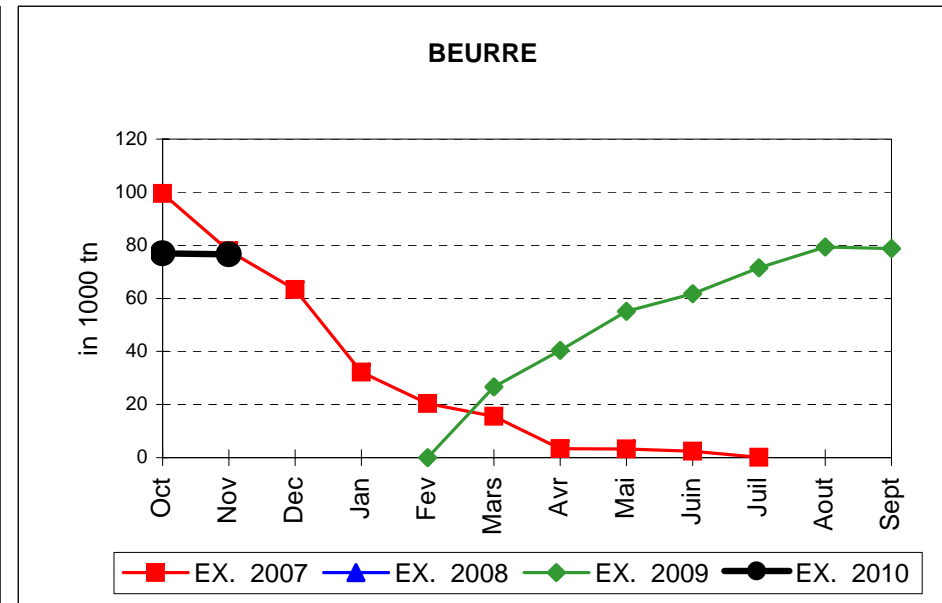
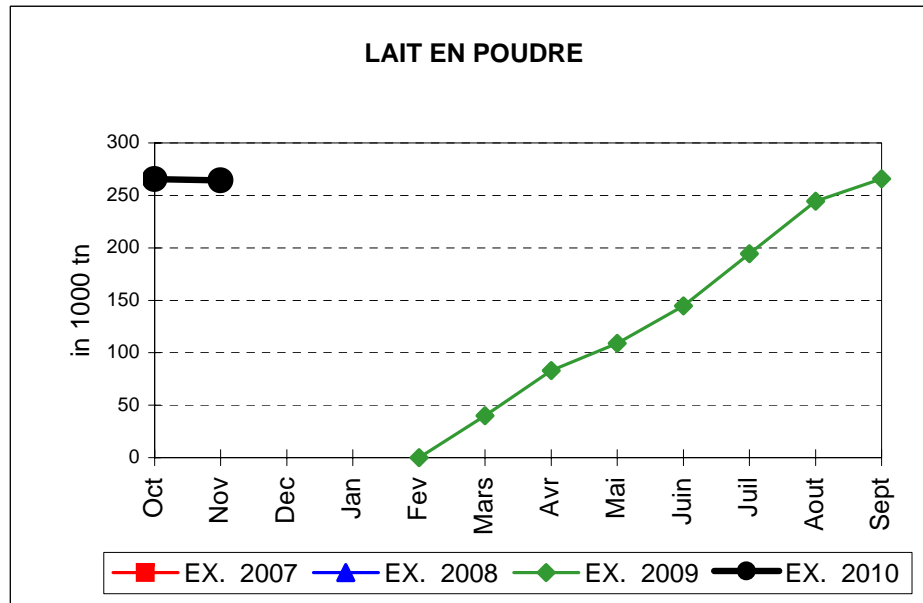
## EVOLUTION IN QUANTITIES OF PUBLIC INTERVENTION STOCKS



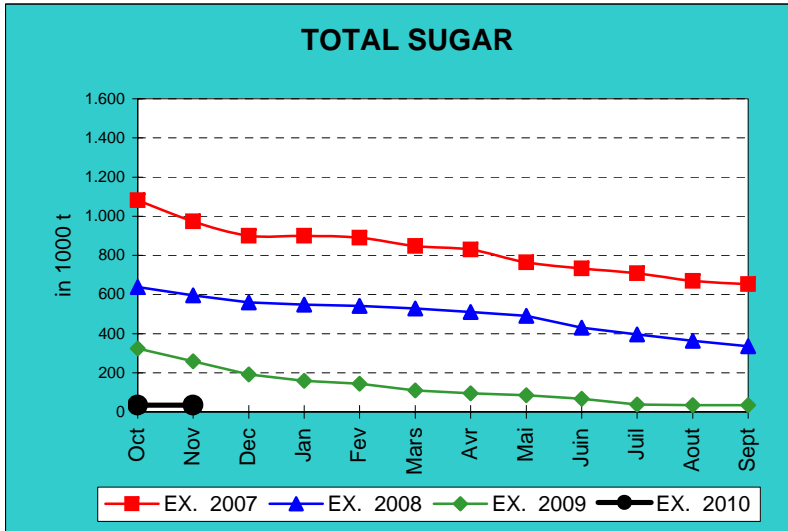
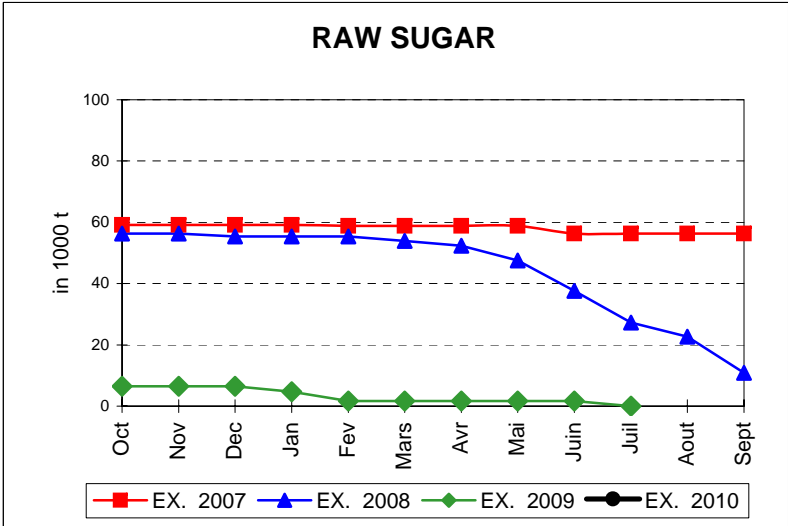
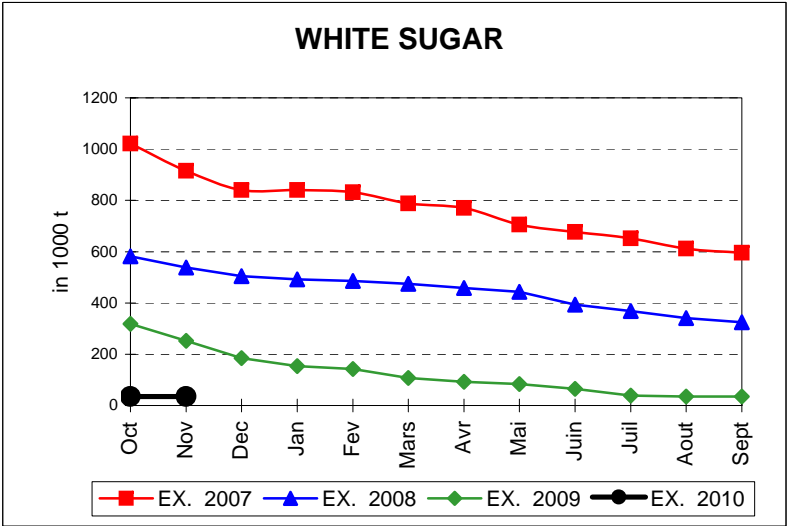
# EVOLUTION IN QUANTITIES OF PUBLIC INTERVENTION STOCKS



## EVOLUTION IN QUANTITIES OF PUBLIC INTERVENTION STOCKS



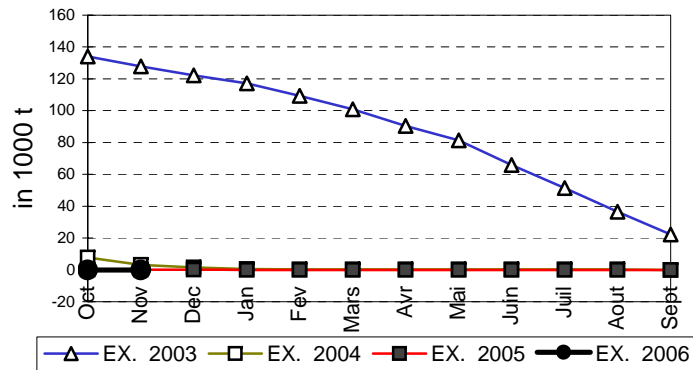
# EVOLUTION IN QUANTITIES OF PUBLIC INTERVENTION STOCKS



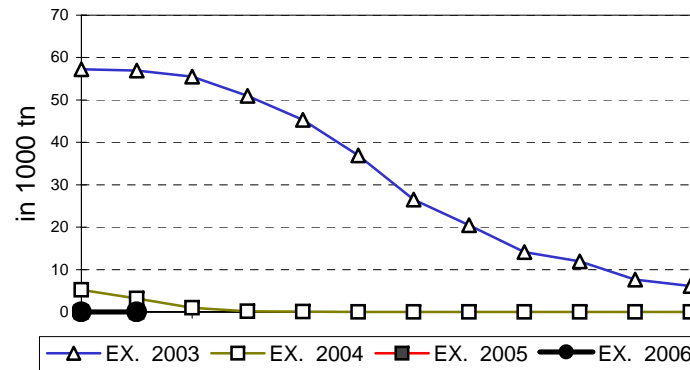


## EVOLUTION IN QUANTITIES OF PUBLIC INTERVENTION STOCKS

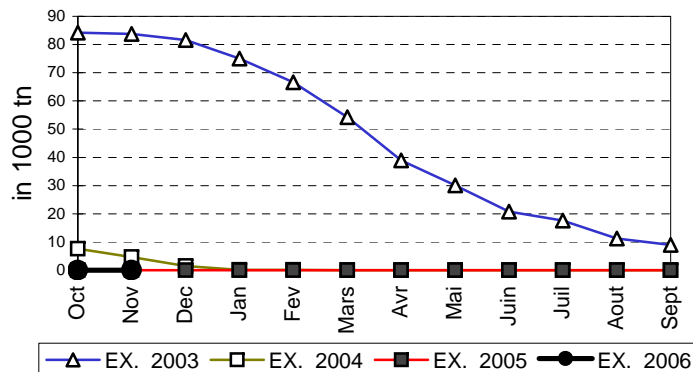
### VIANDE BOVINE CARCASSES



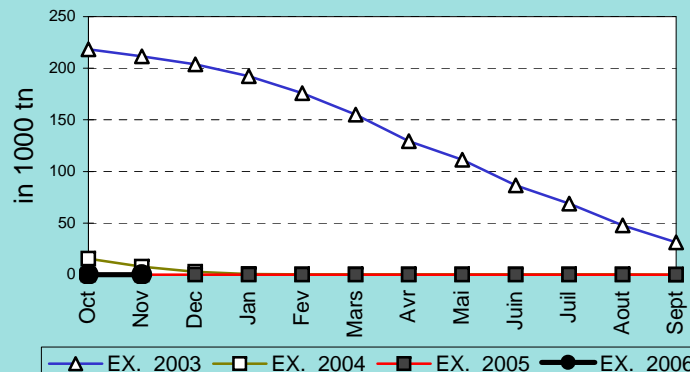
### VIANDE BOVINE DESOSSEE



### VIANDE DESOSSEE EN EQUIVALENT CARCASSES



### TOTAL VIANDE EN EQUIVALENT CARCASSES



## COMPARED WITH PREVIOUS MONTH

EU TOTAL	30-nov-09		31-oct-09		CHANGE IN QTY		CHANGE IN VALUE	
	QUANTITY (tn or hl)	VALUE (in Euro)	QUANTITY (tn or hl)	VALUE (in Euro)	ABSOLUTE (tn or hl)	%	ABSOLUTE (in Euro)	%
CLICK TOTALS FOR GRAPHICS	(a)	(b)	(c)	(d)	(e)=(a)-(c)	(f)=(e)/(c)*%	(g)=(b)-(d)	(h)=(g)/(d)*%
<b>Blé panifiable</b>	85.094	8.786.891	76.703	7.911.341	8.391	11%	875.549	11%
<b>Orge</b>	1.484.231	150.051.305	925.380	94.444.835	558.852	60%	55.606.470	59%
<b>Seigle</b>								
<b>Sorgho</b>	501	50.792	501	50.792				
<b>Mais</b>	556.092	56.507.629	556.092	56.507.629				
<b>TOTAL CEREALES</b>	<b>2.125.918</b>	<b>215.396.616</b>	<b>1.558.676</b>	<b>158.914.597</b>	<b>567.242</b>	<b>36%</b>	<b>56.482.019</b>	<b>36%</b>
<b>TOTAL RIZ</b>								
<b>Alcool Public</b>	1.478.534	54.820.049	1.490.634	55.270.411	-12.100	-1%	-450.362	-1%
<b>Alcool Mixte</b>	11.088	180.880	11.088	180.880				
<b>TOTAL ALCOOL (HL 100%)</b>	<b>1.489.622</b>	<b>55.000.929</b>	<b>1.501.722</b>	<b>55.451.291</b>	<b>-12.100</b>	<b>-1%</b>	<b>-450.362</b>	<b>-1%</b>
<b>LEP</b>	264.347	394.429.941	265.492	396.142.690	-1.145	0%	-1.712.749	0%
<b>Beurre</b>	76.556	166.750.056	76.988	167.692.311	-432	-1%	-942.255	-1%
<b>TOTAL LAIT ET BEURRE</b>	<b>340.903</b>	<b>561.179.997</b>	<b>342.480</b>	<b>563.835.001</b>	<b>-1.577</b>	<b>0%</b>	<b>-2.655.004</b>	<b>0%</b>
<b>Sucre blanc</b>	34.830	11.227.656	34.830	11.227.656				
<b>Sucre brut</b>								
<b>TOTAL SUCRE</b>	<b>34.830</b>	<b>11.227.656</b>	<b>34.830</b>	<b>11.227.656</b>				
<b>Bov. carc.</b>								
<b>Bov. des.</b>								
<b>Eq. carc.</b>								
<b>TOTAL EQ. CARCASSES</b>								
<b>GRAND TOTAL</b>		<b>842.805.199</b>		<b>789.428.545</b>			<b>53.376.654</b>	<b>7%</b>

SOURCE :

The declarations of the Member States before controls.

## COMPARED WITH PREVIOUS YEAR

EU TOTAL	30-nov-09		30-nov-08		CHANGE IN QTY		CHANGE IN VALUE	
	QUANTITY (tn or hl)	VALUE (in Euro)	QUANTITY (tn or hl)	VALUE (In Euro)	ABSOLUTE (tn or hl)	%	ABSOLUTE (in Euro)	%
CLICK TOTALS FOR GRAPHICS	(a)	(b)	(c)	(d)	(e)=(a)-(c)	(f)=(e)/(c)*%	(g)=(b)-(d)	(h)=(g)/(d)*%
<b>Blé panifiable</b>	85.094	8.786.891	37	3.302	85.057	231700%	8.783.588	266003%
<b>Orge</b>	1.484.231	150.051.305	82	8.273	1.484.149	1802027%	150.043.032	1813634%
<b>Seigle</b>								
<b>Sorgho</b>	501	50.792			501		50.792	
<b>Mais</b>	556.092	56.507.629	22.842	2.242.849	533.250	2335%	54.264.780	2419%
<b>TOTAL CEREALES</b>	<b>2.125.918</b>	<b>215.396.616</b>	<b>22.961</b>	<b>2.254.424</b>	<b>2.102.957</b>	<b>9159%</b>	<b>213.142.192</b>	<b>9454%</b>
<b>TOTAL RIZ</b>								
<b>Alcool Public</b>	1.478.534	54.820.049	2.260.242	96.407.967	-781.707	-35%	-41.587.918	-43%
<b>Alcool Mixte</b>	11.089	180.880	11.966	185.790	-878	-7%	-4.910	-3%
<b>TOTAL ALCOOL (HL 100%)</b>	<b>1.489.623</b>	<b>55.000.929</b>	<b>2.272.207</b>	<b>96.593.758</b>	<b>-782.585</b>	<b>-34%</b>	<b>-41.592.829</b>	<b>-43%</b>
<b>LEP</b>	264.347	394.429.941			264.347		394.429.941	
<b>Beurre</b>	76.556	166.750.056			76.556		166.750.056	
<b>TOTAL LAIT ET BEURRE</b>	<b>340.903</b>	<b>561.179.997</b>			<b>340.903</b>		<b>561.179.997</b>	
<b>Sucre blanc</b>	34.830	11.227.656	252.359	84.107.015	-217.529	-86%	-72.879.359	-87%
<b>Sucre brut</b>			6.444	1.558.098	-6.444	-100%	-1.558.098	-100%
<b>TOTAL SUCRE</b>	<b>34.830</b>	<b>11.227.656</b>	<b>258.803</b>	<b>85.665.114</b>	<b>-223.973</b>	<b>-87%</b>	<b>-74.437.457</b>	<b>-87%</b>
<b>Bov. carc.</b>								
<b>Bov. des.</b>								
<b>Eq. carc.</b>								
<b>TOTAL EQ. CARCASSES</b>								
<b>GRAND TOTAL</b>		<b>842.805.199</b>		<b>184.513.295</b>			<b>658.291.904</b>	<b>357%</b>

SOURCE :

The declarations of the Member States before controls.

THE PUBLIC STORAGE FLASH REPORT AS AT									
30-nov-09									
ESPAÑA									
PRODUCTS	YEAR-TO-DATE		OPENING BALANCE		CHANGE IN QTY		CHANGE IN VALUE		
	QUANTITY (in tonnes or hl)	VALUE (in Euro)	QUANTITY (in tonnes or hl)	VALUE (in Euro)	ABSOLUTE (in tonnes or hl)	%	ABSOLUTE (in Euro)	%	
	(a)	(b)	(c)	(d)	(e)=(a)-(c)	(f)=(e)/(c)*%	(g)=(b)-(d)	(h)=(g)/(d)*%	
Ble panifiable									
Orge									
Seigle									
Sorgho									
Mais									
<b>TOTAL CEREALES</b>									
<b>RIZ</b>									
Alcool Public	549.013	20.434.263	574.043	21.365.391	-25.030	-4%	-931.128	-4%	
Alcool Mixte									
<b>TOT. ALCOOL (HL)</b>	<b>549.013</b>	<b>20.434.263</b>	<b>574.043</b>	<b>21.365.391</b>	<b>-25.030</b>	<b>-4%</b>	<b>-931.128</b>	<b>-4%</b>	
LEP	1.438	2.191.311	1.603	2.442.752	-165	-10%	-251.441	-10%	
Beurre	9.336	20.338.943	9.335	20.336.778	1	0%	2.165	0%	
<b>TOTAL L &amp; B</b>	<b>10.774</b>	<b>22.530.253</b>	<b>10.936</b>	<b>22.779.530</b>	<b>-164</b>	<b>-1%</b>	<b>-249.276</b>	<b>-1%</b>	
Sucre Blanc									
Sucre Brut									
<b>TOTAL SUCRE</b>									
Bov. carc.									
Bov. des.									
Eq. carc.									
<b>TOTAL EQ. CARC.</b>									
<b>GRAND TOTAL</b>		<b>42.964.517</b>		<b>44.144.921</b>			<b>-1.180.404</b>	<b>-3%</b>	

