

CHOOSE COUNTRY

EU TOTAL	YEAR-TO-DATE		OPENING BALANCE (1)		CHANGE IN QTY		CHANGE IN VALUE	
	QUANTITY (tn or hl)	VALUE (in Euro)	QUANTITY (tn or hl)	VALUE (in Euro)	ABSOLUTE (tn or hl)	%	ABSOLUTE (in Euro)	%
CLICK TOTALS FOR GRAPHICS	(a)	(b)	(c)	(d)	(e)=(a)-(c)	(f)=(e)/(c)*%	(g)=(b)-(d)	(h)=(g)/(d)*%
Blé panifiable	234.577	23.710.941	234.577	23.710.769			172	0%
Orge	5.326.155	540.451.267	5.326.162	540.451.972	-7	0%	-705	0%
Seigle								
Sorgho								
Mais	671	67.950	3.142	318.234	-2.471	-79%	-250.284	-79%
<b>TOTAL CEREALES</b>	<b>5.561.403</b>	<b>564.230.159</b>	<b>5.563.880</b>	<b>564.480.975</b>	<b>-2.478</b>	<b>0%</b>	<b>-250.816</b>	<b>0%</b>
<b>TOTAL RIZ</b>								
Alcool Public	462.423	15.723.176	628.630	21.369.957	-166.207	-26%	-5.646.781	-26%
Alcool Mixte	2	10	1.173	4.645	-1.171	-100%	-4.636	-100%
<b>TOTAL ALCOOL (HL 100%)</b>	<b>462.425</b>	<b>15.723.186</b>	<b>629.803</b>	<b>21.374.602</b>	<b>-167.378</b>	<b>-27%</b>	<b>-5.651.416</b>	<b>-26%</b>
LEP	195.157	291.058.002	197.223	294.161.988	-2.066	-1%	-3.103.986	-1%
Beurre	1.544	3.341.537	1.545	3.343.770	-1	0%	-2.233	0%
<b>TOTAL LAIT ET BEURRE</b>	<b>196.701</b>	<b>294.399.539</b>	<b>198.769</b>	<b>297.505.758</b>	<b>-2.067</b>	<b>-1%</b>	<b>-3.106.219</b>	<b>-1%</b>
Sucre Blanc	9	3.052	9	3.052				
Sucre Brut								
<b>TOTAL SUCRE</b>	<b>9</b>	<b>3.052</b>	<b>9</b>	<b>3.052</b>				
Bov. carc.								
Bov. des.								
Eq. carc.								
<b>TOTAL EQ. CARCASSES</b>								
<b>GRAND TOTAL</b>		<b>874.355.935</b>		<b>883.364.387</b>			<b>-9.008.452</b>	<b>-1%</b>

SOURCE : The declarations of the Member States before controls.

(1) Period 13/2010 annual declaration

quantities are expressed in  
tonnes (alcohol in hl 100%)

ACCOUNTING VALUE OF THE PUBLIC INTERVENTION STOCKS AS AT :  
(BEFORE THE COMPLEMENTARY DEPRECIATION)

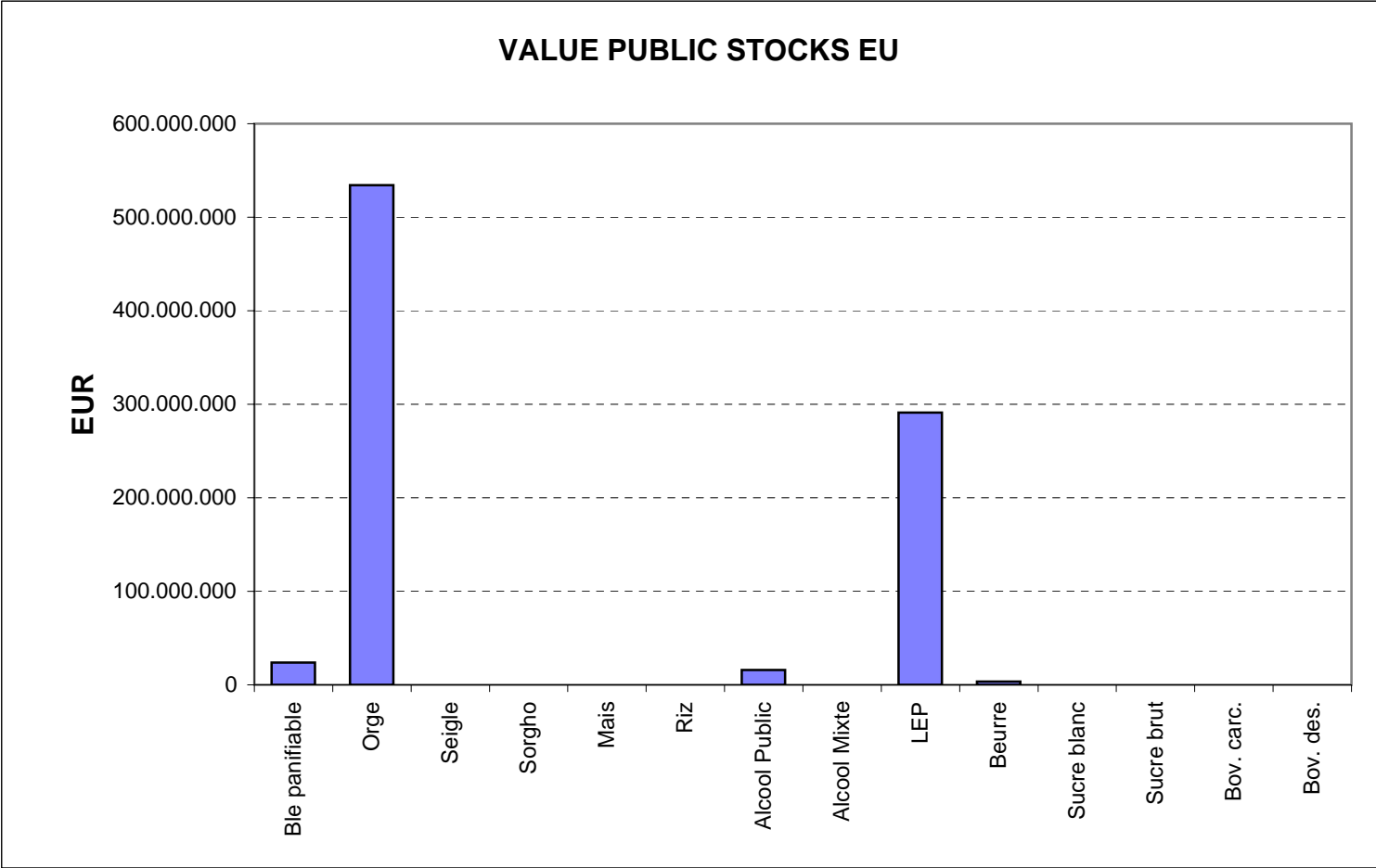
30-nov-10

AGRI I.4

J. FLORET tel. 53236

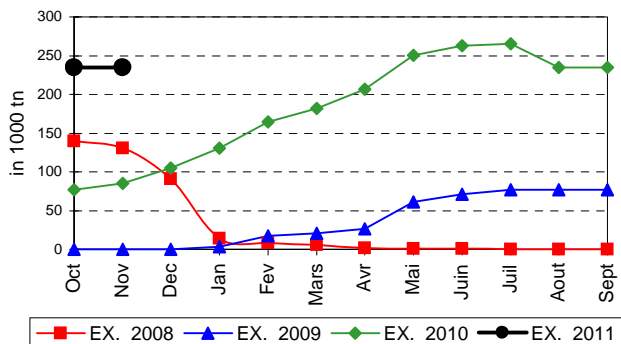
Produits		BE	BG	CZ	DK	DE	EE	IE	EL	ES	FR	IT	CY	LV	LT	LU	HU	MT	NL	OS	PL	PO	RO	SI	SK	FIN	SE	UK	TOTAL	
BLE PANIF	quant.		3.587	61.338											91	119.001					619				27.059	22.882			234.577	
	valeur		355.892	6.211.116											8.867	12.054.803						62.615				2.747.318	2.270.330			23.710.941
ORGE	quant.	34.950	42.101	282.466	59.583	1.683.604	74.798				928.910			22.993	152.286		299.366			40.689	365.268		61.433		155.684	822.630	148.257	151.136	5.326.155	
	valeur	3.548.459	4.348.146	29.786.035	6.069.142	169.202.198	7.583.752				94.544.491			2.317.023	15.341.257		30.535.334			4.131.163	36.830.021		6.273.544		15.847.100	84.039.902	15.085.191	14.968.508	540.451.267	
SEIGLE	quant.																													
SEIGLE	valeur																													
SORGHO	quant.																													
SORGHO	valeur																													
MAIS	quant.																671												671	
	valeur																67.950												67.950	
TOT.CER	quant.	34.950	45.687	343.804	59.583	1.683.604	74.798				928.910			22.993	152.377		419.038			40.689	365.887		61.433		182.743	845.512	148.257	151.136	5.561.403	
RIZ	quant.																													
RIZ	valeur																													
ALC.P.	quant.								60.182	261.614	6.724		7.112				54.786					72.006							462.423	
	valeur								2.046.174	8.897.477	227.795		241.520				1.862.738					2.447.473							15.723.176	
ALC.M.	quant.										2																		2	
	valeur										10																		10	
TOT.ALC.	quant.								60.182	261.614	6.726		7.112				54.786					72.006							462.425	
LEP	quant.	24.122		2.946		63.463	1.665	32.170			23.929						4.632			17.760	2.597	607				1.052	3.614	16.601	195.157	
	valeur	35.720.879		4.641.050		94.426.449	2.382.081	48.058.217			35.851.855						6.941.917			26.549.910	3.850.494	909.158				1.575.738	5.411.965	24.738.289	291.058.002	
BEURRE	quant.						182										1.363												1.544	
	valeur						371.083										2.970.454												3.341.537	
TOT L&B	quant.	24.122		2.946		63.463	1.847	32.170			23.929					5.994				17.760	2.597	607				1.052	3.614	16.601	196.701	
S. BLANC	quant.			9																									9	
	valeur			3.052																									3.052	
S. BRUT	quant.																													
	valeur																													
TOT. SUC	quant.			9																									9	
BOV.QUA	quant.																													
	valeur																													
BOV.DES	quant.																													
	valeur																													
EQ. CARC	quant.																													
TOT EQ	quant.																													
EU TOTAL	valeur	39.269.338	4.704.038	40.641.252	6.069.142	263.628.646	10.336.916	48.058.217	2.046.174	8.897.477	130.624.151		241.520	2.317.023	25.262.496	44.520.826	26.549.910	4.131.163	26.549.910	4.131.163	40.743.130	3.356.631	6.273.544		18.594.418	87.885.971	20.497.156	39.706.797	874.355.935	

**PUBLIC INTERVENTION STOCKS**

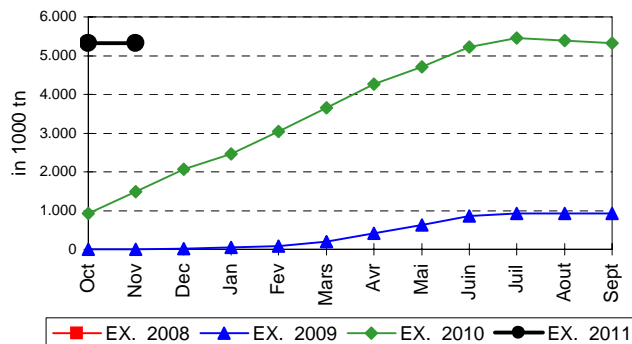


## EVOLUTION IN QUANTITIES OF PUBLIC INTERVENTION STOCKS

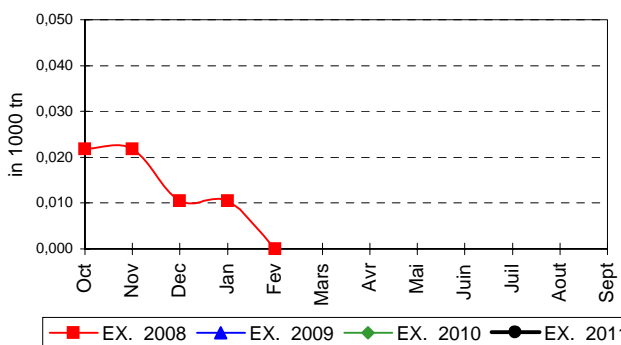
### BLE TENDRE PANIFIABLE



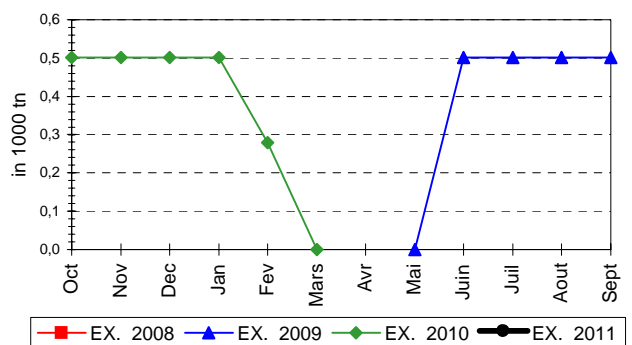
### ORGE



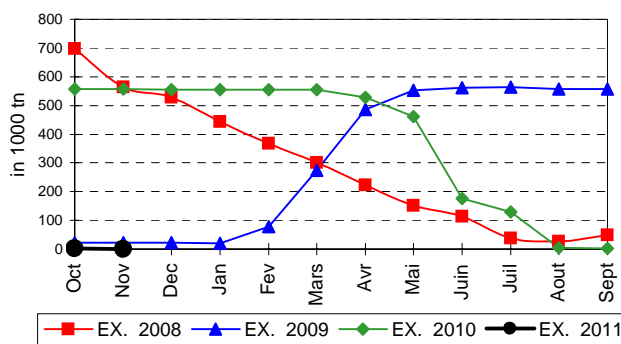
### SEIGLE



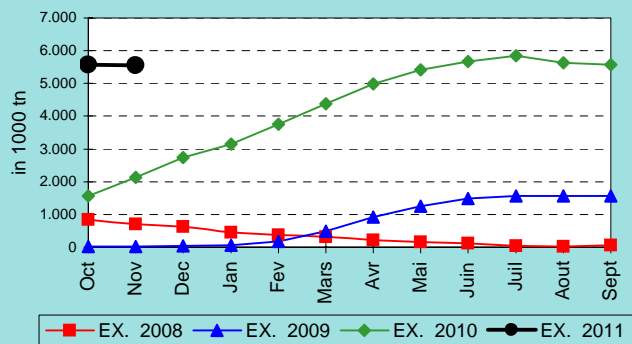
### SORGHO



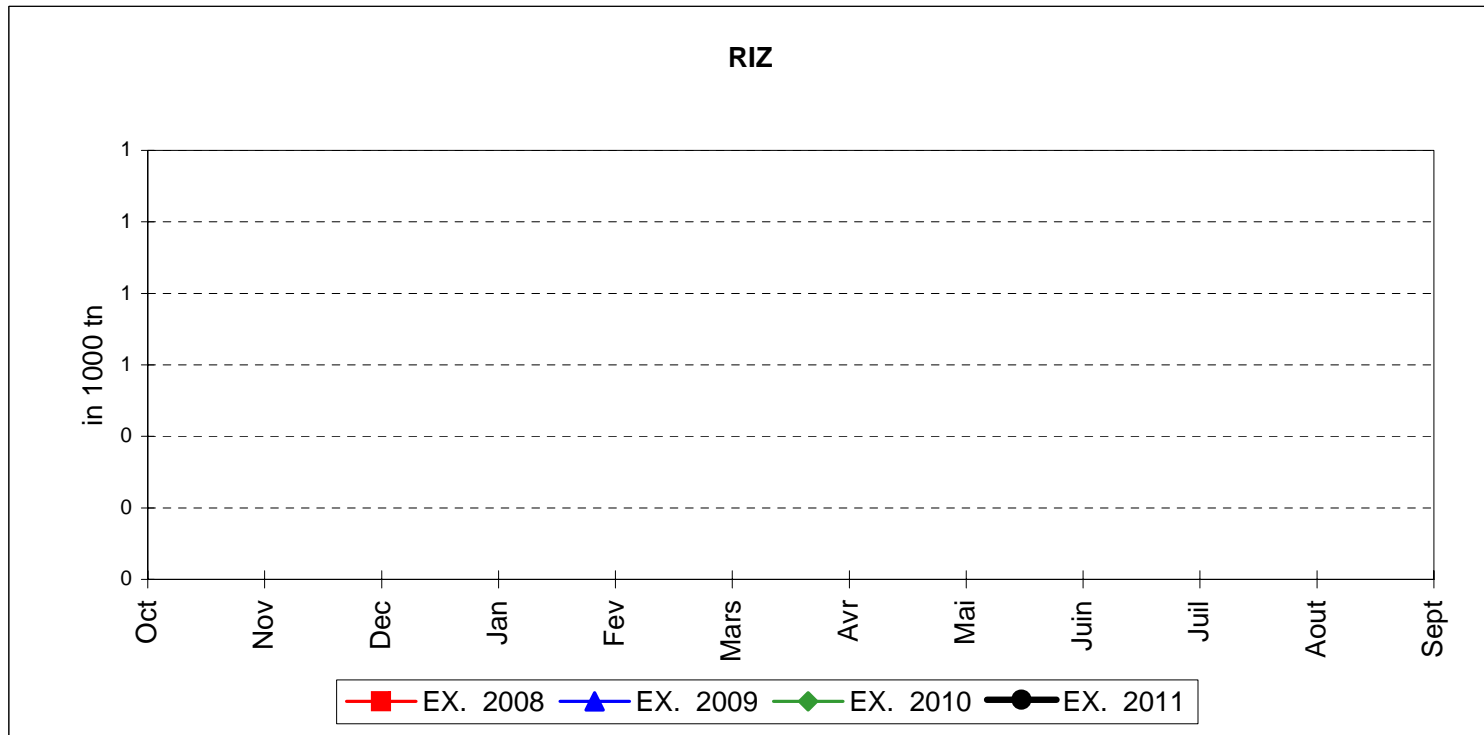
### MAIS



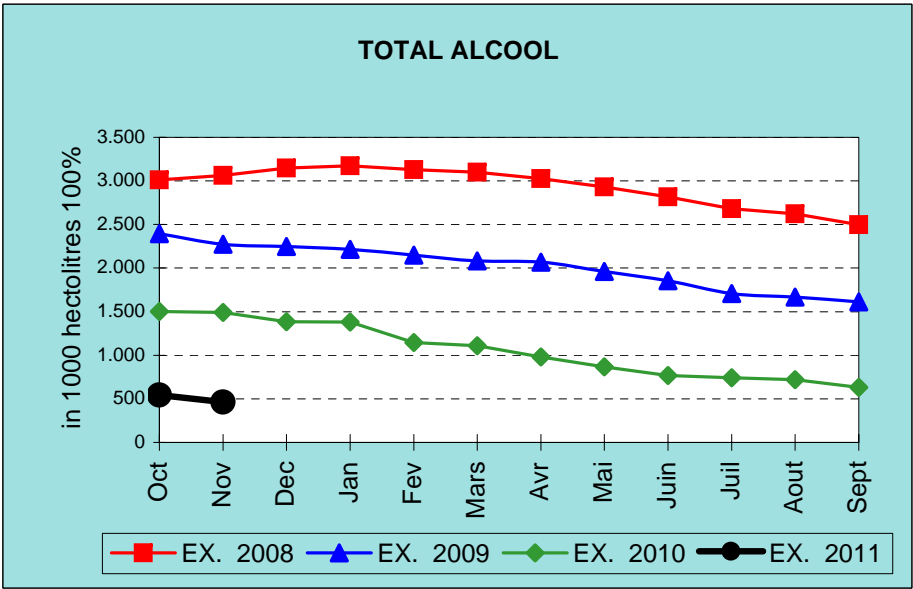
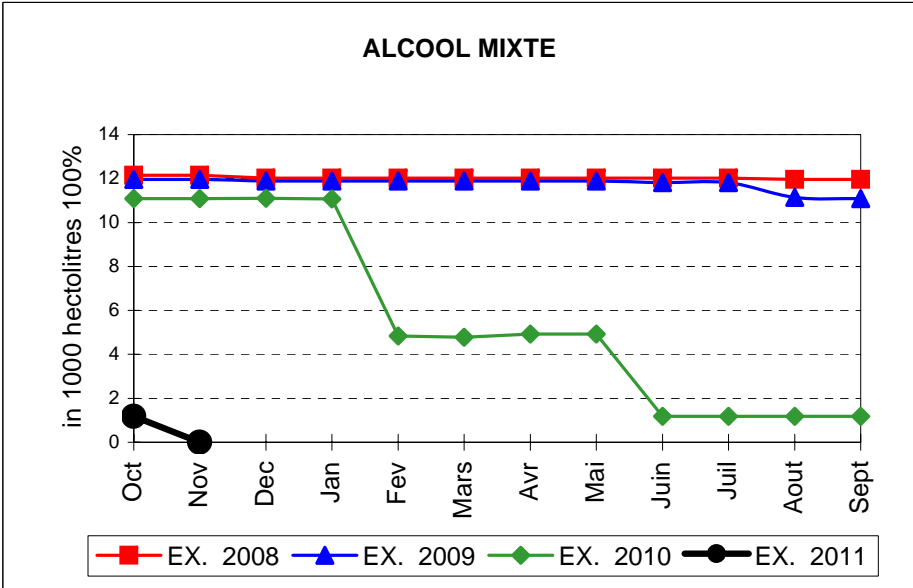
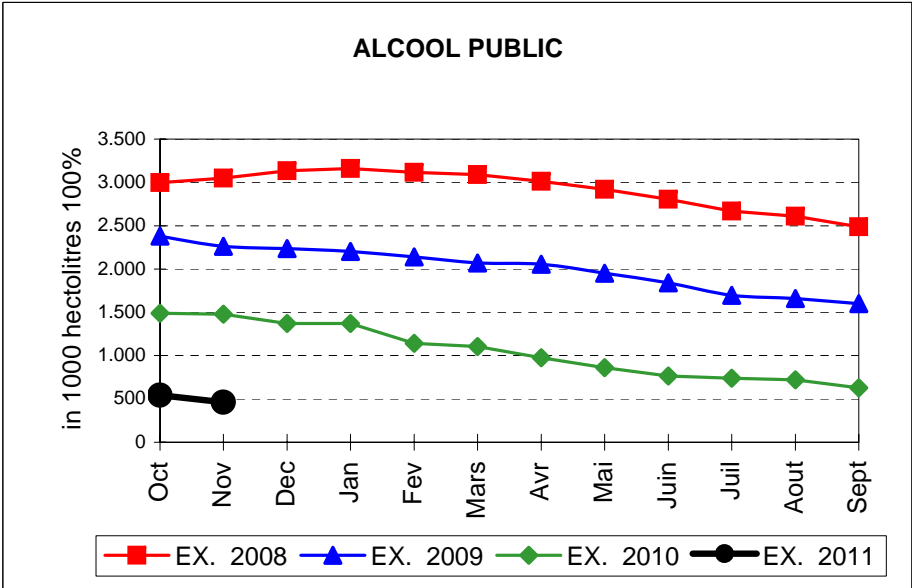
### TOTAL CEREALES



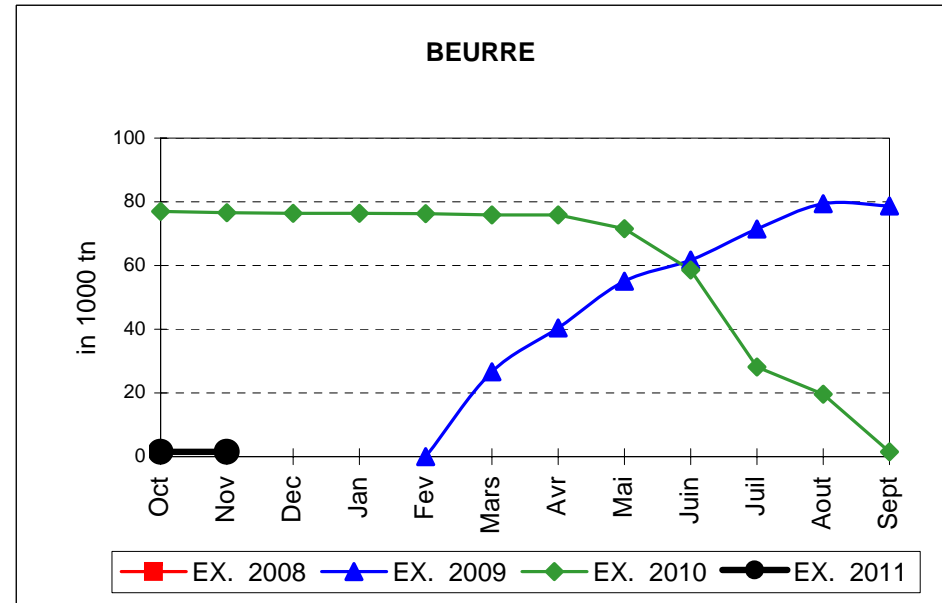
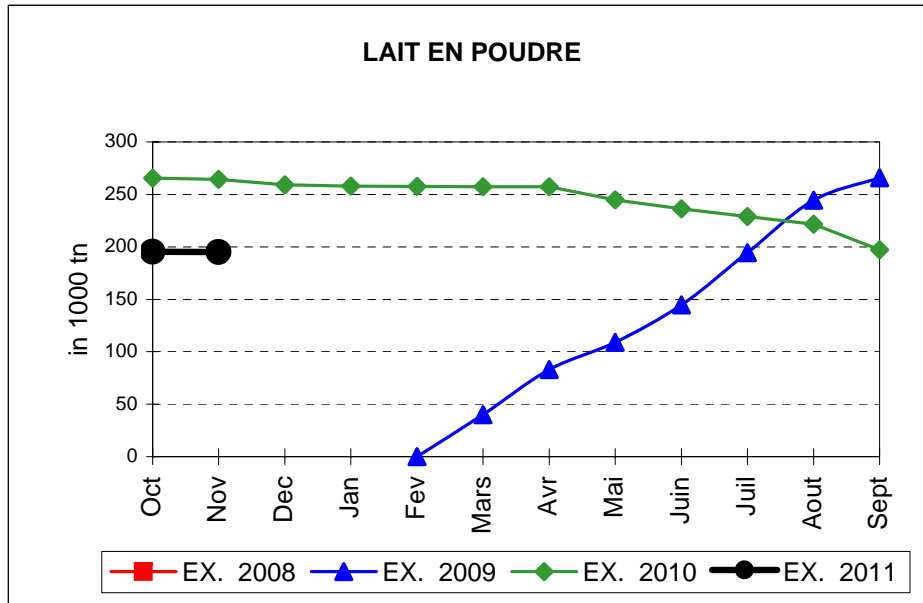
## EVOLUTION IN QUANTITIES OF PUBLIC INTERVENTION STOCKS



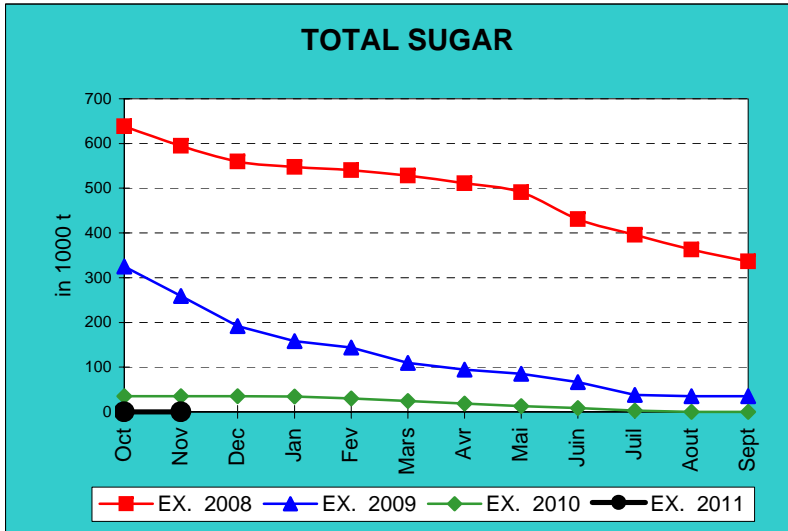
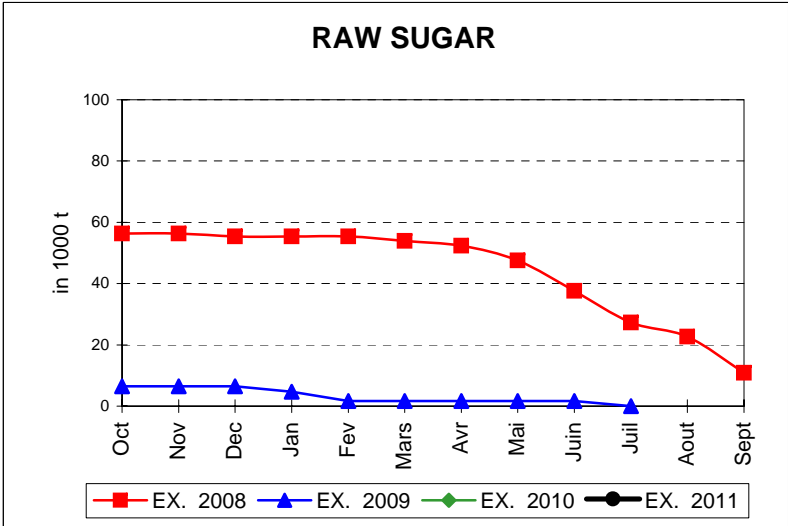
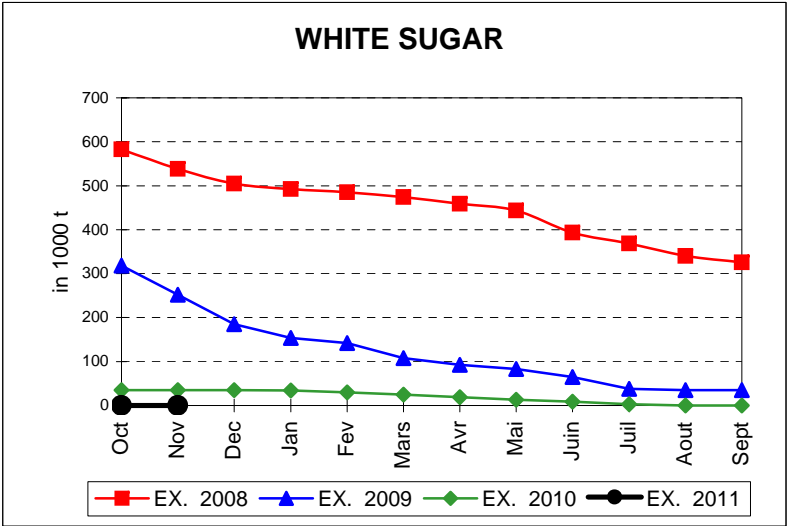
# EVOLUTION IN QUANTITIES OF PUBLIC INTERVENTION STOCKS



## EVOLUTION IN QUANTITIES OF PUBLIC INTERVENTION STOCKS



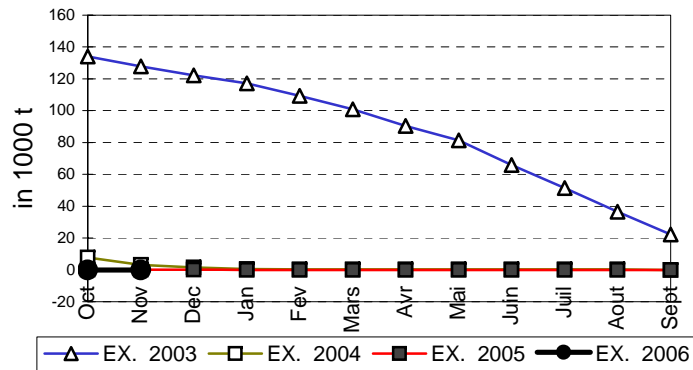
# EVOLUTION IN QUANTITIES OF PUBLIC INTERVENTION STOCKS



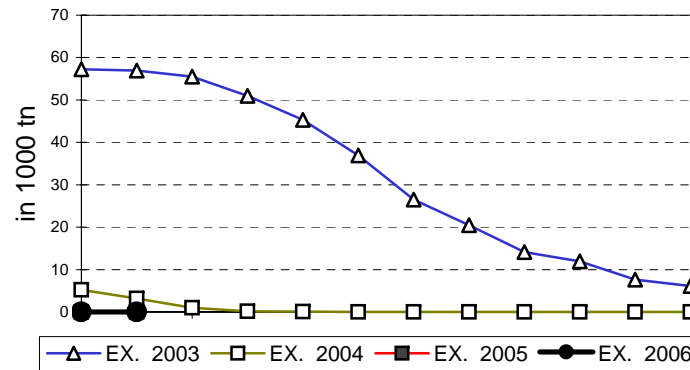


## EVOLUTION IN QUANTITIES OF PUBLIC INTERVENTION STOCKS

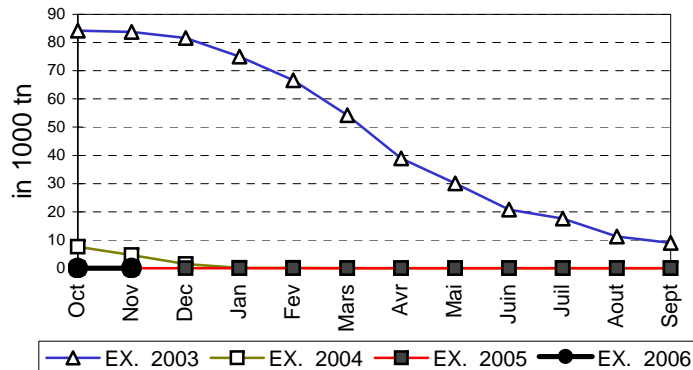
### VIANDE BOVINE CARCASSES



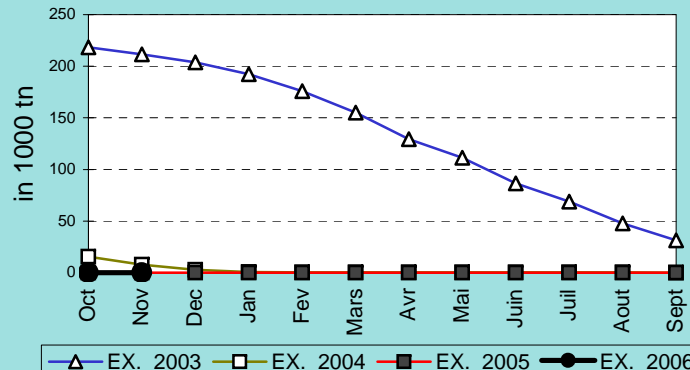
### VIANDE BOVINE DESOSSEE



### VIANDE DESOSSEE EN EQUIVALENT CARCASSES



### TOTAL VIANDE EN EQUIVALENT CARCASSES



## COMPARED WITH PREVIOUS MONTH

EU TOTAL	30-nov-10		31-oct-10		CHANGE IN QTY		CHANGE IN VALUE	
	QUANTITY (tn or hl)	VALUE (in Euro)	QUANTITY (tn or hl)	VALUE (In Euro)	ABSOLUTE (tn or hl)	%	ABSOLUTE (in Euro)	%
CLICK TOTALS FOR GRAPHICS	(a)	(b)	(c)	(d)	(e)=(a)-(c)	(f)=(e)/(c)*%	(g)=(b)-(d)	(h)=(g)/(d)*%
Blé panifiable	234.577	23.710.941	234.577	23.710.941				
Orge	5.326.155	540.451.267	5.326.155	540.451.267				
Seigle								
Sorgho								
Mais	671	67.950	3.142	318.234	-2.471	-79%	-250.284	-79%
<b>TOTAL CEREALES</b>	<b>5.561.403</b>	<b>564.230.159</b>	<b>5.563.873</b>	<b>564.480.443</b>	<b>-2.471</b>	<b>0%</b>	<b>-250.284</b>	<b>0%</b>
<b>TOTAL RIZ</b>								
Alcool Public	462.423	15.723.176	543.479	18.476.480	-81.056	-15%	-2.753.303	-15%
Alcool Mixte	2	10	1.173	4.645	-1.171	-100%	-4.636	-100%
<b>TOTAL ALCOOL (HL 100%)</b>	<b>462.425</b>	<b>15.723.186</b>	<b>544.652</b>	<b>18.481.125</b>	<b>-82.227</b>	<b>-15%</b>	<b>-2.757.939</b>	<b>-15%</b>
LEP	195.157	291.058.002	195.302	291.274.411	-145	0%	-216.409	0%
Beurre	1.544	3.341.537	1.544	3.341.537				
<b>TOTAL LAIT ET BEURRE</b>	<b>196.701</b>	<b>294.399.539</b>	<b>196.847</b>	<b>294.615.948</b>	<b>-145</b>	<b>0%</b>	<b>-216.409</b>	<b>0%</b>
Sucre blanc	9	3.052	9	3.052				
Sucre brut								
<b>TOTAL SUCRE</b>	<b>9</b>	<b>3.052</b>	<b>9</b>	<b>3.052</b>				
Bov. carc.								
Bov. des.								
Eq. carc.								
<b>TOTAL EQ. CARCASSES</b>								
<b>GRAND TOTAL</b>		<b>874.355.935</b>		<b>877.580.567</b>			<b>-3.224.632</b>	<b>0%</b>

SOURCE : The declarations of the Member States before controls.

## COMPARED WITH PREVIOUS YEAR

EU TOTAL	30-nov-10		30-nov-09		CHANGE IN QTY		CHANGE IN VALUE	
	QUANTITY (tn or hl)	VALUE (in Euro)	QUANTITY (tn or hl)	VALUE (In Euro)	ABSOLUTE (tn or hl)	%	ABSOLUTE (in Euro)	%
CLICK TOTALS FOR GRAPHICS	(a)	(b)	(c)	(d)	(e)=(a)-(c)	(f)=(e)/(c)*%	(g)=(b)-(d)	(h)=(g)/(d)*%
<b>Blé panifiable</b>	234.577	23.710.941	85.094	8.786.891	149.483	176%	14.924.050	170%
<b>Orge</b>	5.326.155	540.451.267	1.484.231	150.051.305	3.841.924	259%	390.399.963	260%
<b>Seigle</b>								
<b>Sorgho</b>			501	50.792	-501	-100%	-50.792	-100%
<b>Mais</b>	67	67.950	556.092	56.507.629	-555.421	-100%	-56.439.679	-100%
<b>TOTAL CEREALES</b>	<b>5.561.409</b>	<b>564.230.159</b>	<b>2.125.918</b>	<b>215.396.616</b>	<b>3.435.484</b>	<b>162%</b>	<b>348.833.542</b>	<b>162%</b>
<b>TOTAL RIZ</b>								
<b>Alcool Public</b>	462.423	15.723.176	1.478.534	54.820.049	-1.016.112	-69%	-39.096.873	-71%
<b>Alcool Mixte</b>	2	10	11.088	180.880	-11.086	-100%	-180.870	-100%
<b>TOTAL ALCOOL (HL 100%)</b>	<b>462.425</b>	<b>15.723.186</b>	<b>1.489.622</b>	<b>55.000.929</b>	<b>-1.027.197</b>	<b>-69%</b>	<b>-39.277.743</b>	<b>-71%</b>
<b>LEP</b>	195.157	291.058.002	264.347	394.429.941	-69.190	-26%	-103.371.939	-26%
<b>Beurre</b>	1.544	3.341.537	76.556	166.750.056	-75.011	-98%	-163.408.519	-98%
<b>TOTAL LAIT ET BEURRE</b>	<b>196.701</b>	<b>294.399.539</b>	<b>340.903</b>	<b>561.179.997</b>	<b>-144.201</b>	<b>-42%</b>	<b>-266.780.458</b>	<b>-48%</b>
<b>Sucre blanc</b>	9	3.052	34.830	11.227.656	-34.821	-100%	-11.224.604	-100%
<b>Sucre brut</b>								
<b>TOTAL SUCRE</b>	<b>9</b>	<b>3.052</b>	<b>34.830</b>	<b>11.227.656</b>	<b>-34.821</b>	<b>-100%</b>	<b>-11.224.604</b>	<b>-100%</b>
<b>Bov. carc.</b>								
<b>Bov. des.</b>								
<b>Eq. carc.</b>								
<b>TOTAL EQ. CARCASSES</b>								
<b>GRAND TOTAL</b>		<b>874.355.935</b>		<b>842.805.199</b>			<b>31.550.736</b>	<b>4%</b>

SOURCE :

The declarations of the Member States before controls.

THE PUBLIC STORAGE FLASH REPORT AS AT						30-nov-10			
ESPAÑA									
PRODUCTS	YEAR-TO-DATE		OPENING BALANCE		CHANGE IN QTY		CHANGE IN VALUE		
	QUANTITY (in tonnes or hl)	VALUE (in Euro)	QUANTITY (in tonnes or hl)	VALUE (in Euro)	ABSOLUTE (in tonnes or hl)	%	ABSOLUTE (in Euro)	%	
	(a)	(b)	(c)	(d)	(e)=(a)-(c)	(f)=(e)/(c)*%	(g)=(b)-(d)	(h)=(g)/(d)*%	
Ble panifiable									
Orge									
Seigle									
Sorgho									
Mais									
<b>TOTAL CEREALES</b>									
<b>RIZ</b>									
Alcool Public	261.614	8.897.477	373.725	12.711.227	-112.111	-30%	-3.813.751	-30%	
Alcool Mixte									
<b>TOT. ALCOOL (HL)</b>	<b>261.614</b>	<b>8.897.477</b>	<b>373.725</b>	<b>12.711.227</b>	<b>-112.111</b>	<b>-30%</b>	<b>-3.813.751</b>	<b>-30%</b>	
LEP									
Beurre									
<b>TOTAL L &amp; B</b>									
Sucre Blanc									
Sucre Brut									
<b>TOTAL SUCRE</b>									
Bov. carc.									
Bov. des.									
Eq. carc.									
<b>TOTAL EQ. CARC.</b>									
<b>GRAND TOTAL</b>		<b>8.897.477</b>		<b>12.711.227</b>			<b>-3.813.751</b>	<b>-30%</b>	

