

CHOOSE COUNTRY

EU TOTAL	YEAR-TO-DATE		OPENING BALANCE (1)		CHANGE IN QTY		CHANGE IN VALUE	
	QUANTITY (tn or hl)	VALUE (in Euro)	QUANTITY (tn or hl)	VALUE (in Euro)	ABSOLUTE (tn or hl)	%	ABSOLUTE (in Euro)	%
CLICK TOTALS FOR GRAPHICS	(a)	(b)	(c)	(d)	(e)=(a)-(c)	(f)=(e)/(c)*%	(g)=(b)-(d)	(h)=(g)/(d)*%
Blé panifiable								
Orge	162.584	16.446.034	165.326	16.717.611	-2.742	-2%	-271.577	-2%
Seigle								
Sorgho								
Mais								
TOTAL CEREALES	162.584	16.446.034	165.326	16.717.611	-2.742	-2%	-271.577	-2%
TOTAL RIZ								
Alcool Public	29.284	819.301	55.857	1.566.771	-26.573	-48%	-747.470	-48%
Alcool Mixte								
TOTAL ALCOOL (HL 100%)	29.284	819.301	55.857	1.566.771	-26.573	-48%	-747.470	-48%
LEP	53.555	79.830.823	53.556	79.832.007	-1	0%	-1.185	0%
Beurre	1	2.922	1	2.922				
TOTAL LAIT ET BEURRE	53.557	79.833.745	53.558	79.834.930	-1	0%	-1.185	0%
Sucre Blanc								
Sucre Brut								
TOTAL SUCRE								
Bov. carc.								
Bov. des.								
Eq. carc.								
TOTAL EQ. CARCASSES								
GRAND TOTAL		97.099.081		98.119.313			-1.020.232	-1%

SOURCE : The declarations of the Member States before controls.

(1) Period 13/2011

quantities are expressed in
tonnes (alcohol in hl 100%)

ACCOUNTING VALUE OF THE PUBLIC INTERVENTION STOCKS AS AT :
(BEFORE THE COMPLEMENTARY DEPRECIATION)

30-nov-11

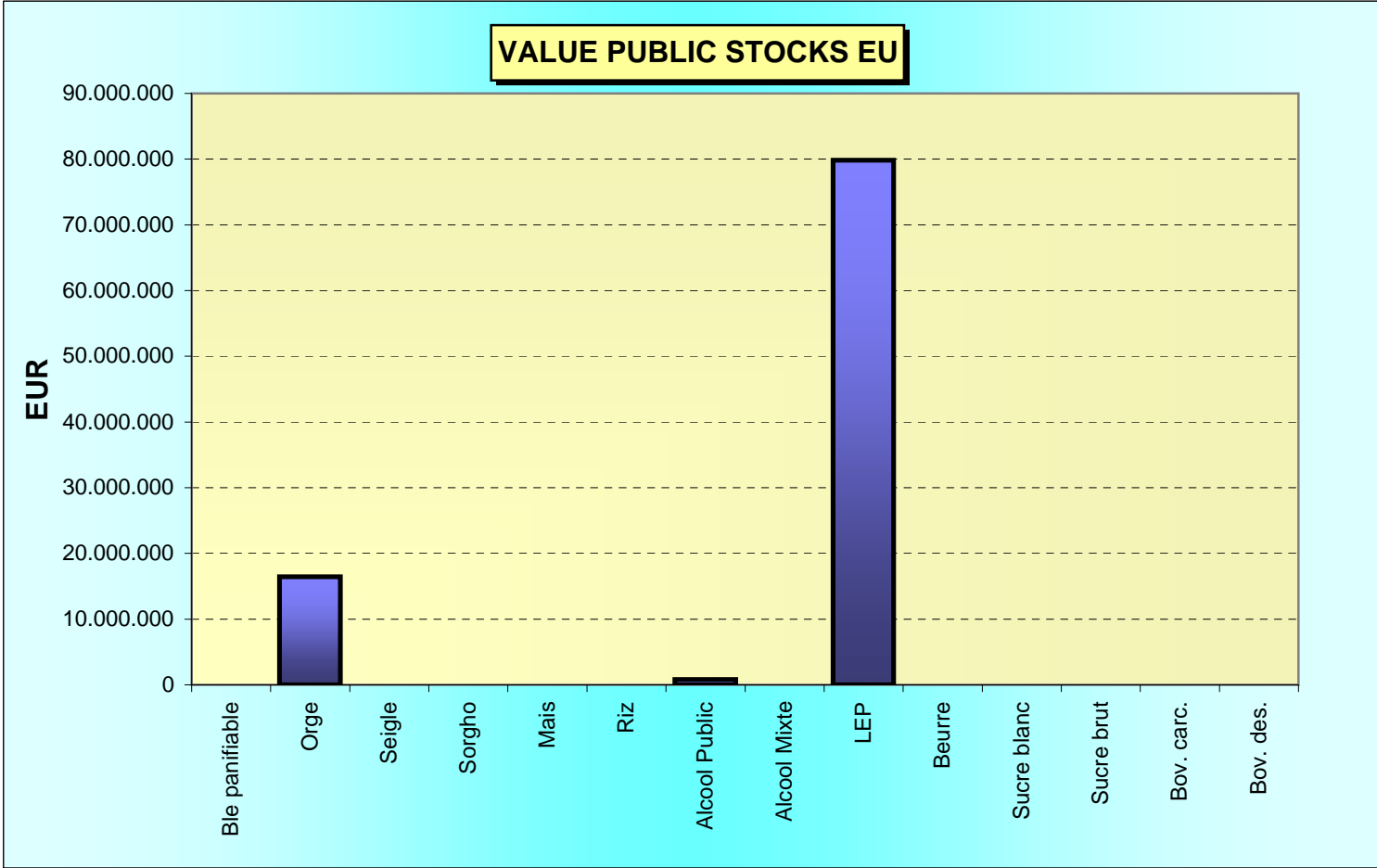
AGRI I.4

G. MERTENS tel. 65910

Produits		BE	BG	CZ	DK	DE	EE	IE	EL	ES	FR	IT	CY	LV	LT	LU	HU	MT	NL	OS	PL	PO	RO	SI	SK	FIN	SE	UK	TOTAL	
BLE PANIF	quant.																													
	valeur																													
ORGE	quant.					16.856					397															75.350	64.820	5.161	162.584	
	valeur					1.694.032					40.182															7.633.695	6.566.934	511.191	16.446.034	
SEIGLE	quant.																													
SEIGLE	valeur																													
SORGHO	quant.																													
SORGHO	valeur																													
MAIS	quant.																													
MAIS	valeur																													
TOT.CER	quant.					16.856					397															75.350	64.820	5.161	162.584	
RIZ	quant.																													
RIZ	valeur																													
ALC.P.	quant.												7.112				22.172													29.284
ALC.P.	valeur											198.920					620.382													819.301
ALC.M.	quant.																													
ALC.M.	valeur																													
TOT.ALC.	quant.												7.112				22.172												29.284	
LEP	quant.	9.465		330		5.977	635	8.513			6.740				3.578				3.527		1	0					191	14.599	53.555	
	valeur	14.016.393		520.420		8.892.918	908.769	12.717.037			10.098.482				5.362.182				5.272.168		1.223	674					285.723	21.754.834	79.830.823	
BEURRE	quant.						1								1														1	
BEURRE	valeur						1.124								1.798														2.922	
TOT L&B	quant.	9.465		330		5.977	636	8.513			6.740				3.578				3.527		1	0					191	14.599	53.557	
S. BLANC	quant.																													
S. BLANC	valeur																													
S. BRUT	quant.																													
S. BRUT	valeur																													
TOT. SUC	quant.																													
BOV.QUA	quant.																													
BOV.QUA	valeur																													
BOV.DES	quant.																													
BOV.DES	valeur																													
EQ. CARC	quant.																													
TOT EQ	quant.																													
EU TOTAL	valeur	14.016.393		520.420		10.586.950	909.893	12.717.037			10.138.664		198.920		5.363.980		620.382		5.272.168		1.223	674				7.633.695	6.852.657	22.266.025	97.099.081	

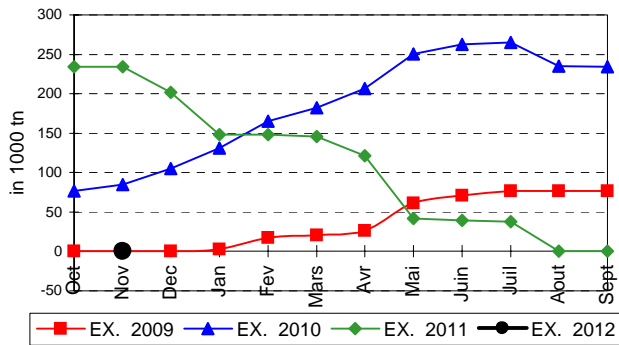
PUBLIC INTERVENTION STOCKS

VALUE PUBLIC STOCKS EU

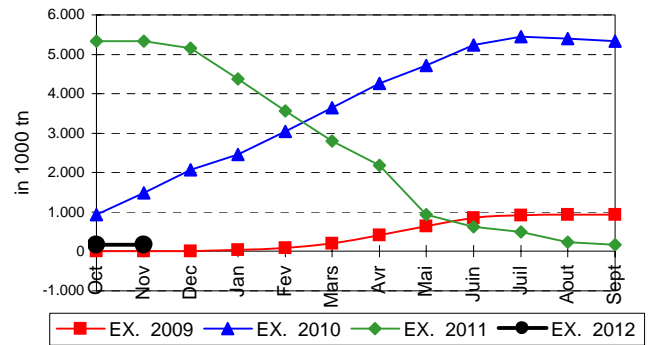


EVOLUTION IN QUANTITIES OF PUBLIC INTERVENTION STOCKS

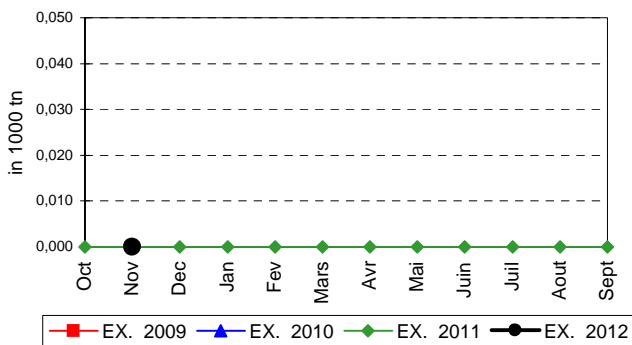
BLE TENDRE PANIFIABLE



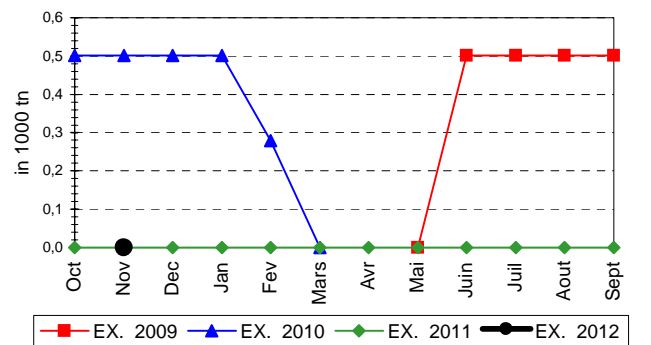
ORGE



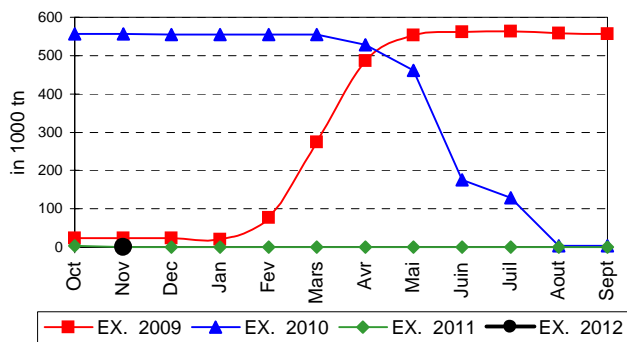
SEIGLE



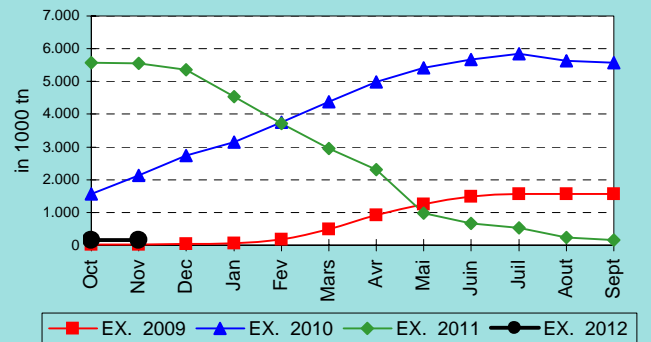
SORGHO



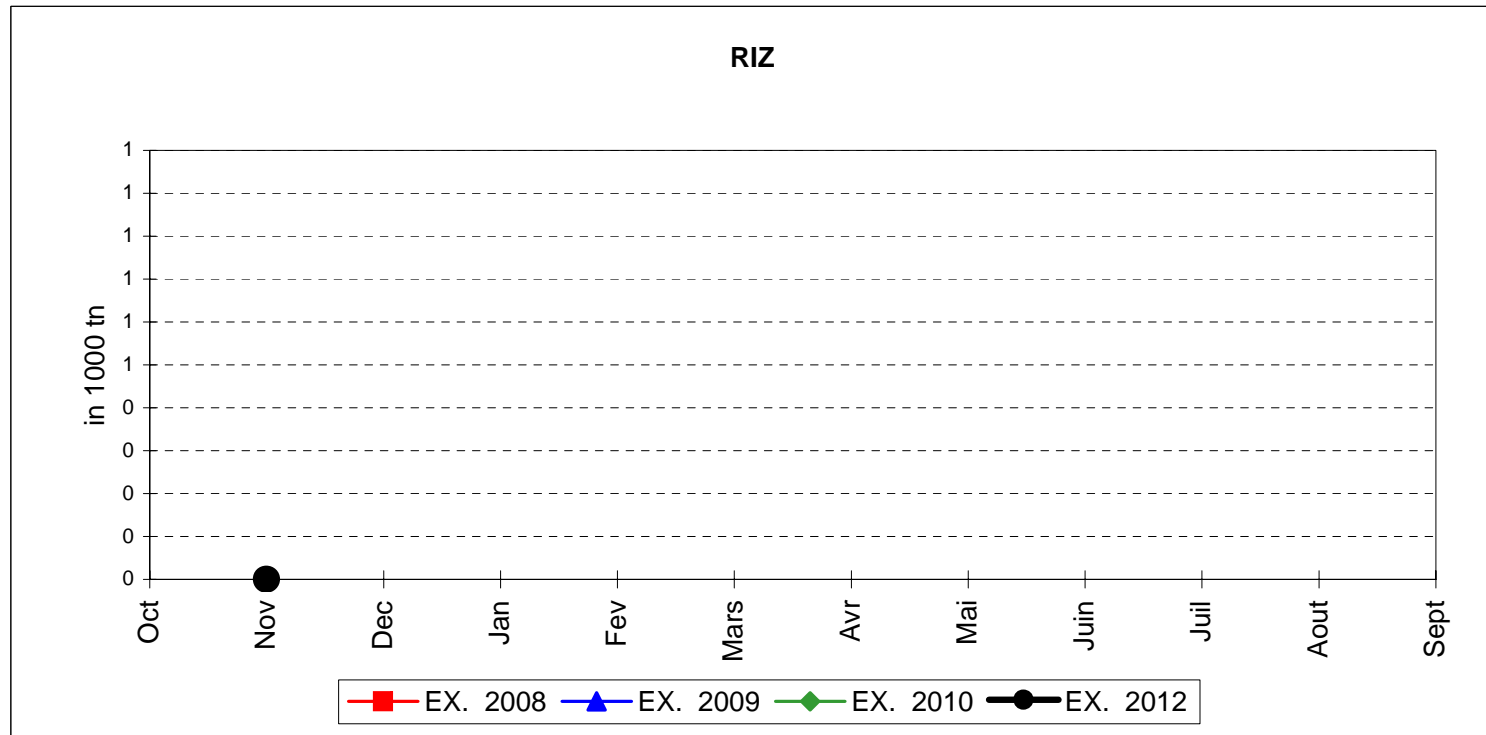
MAIS



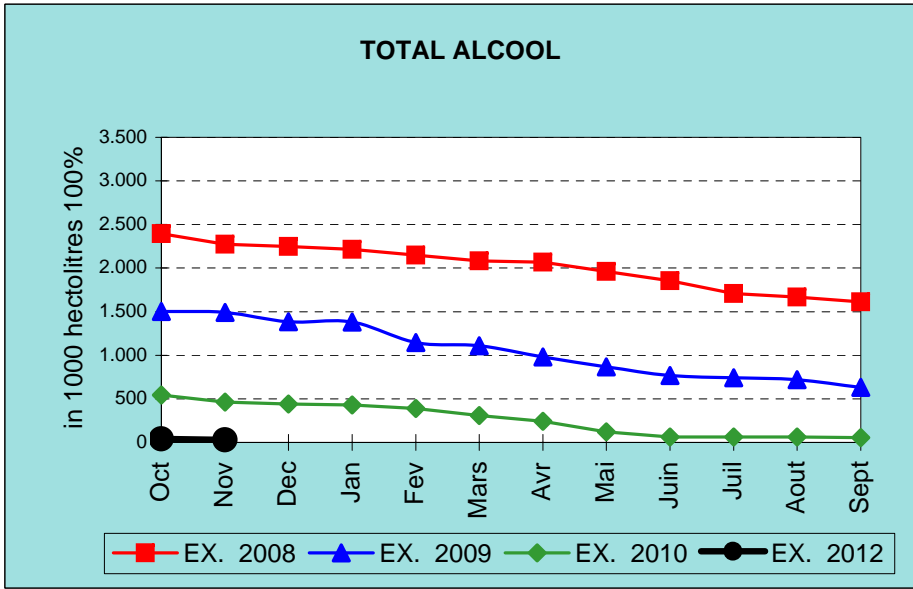
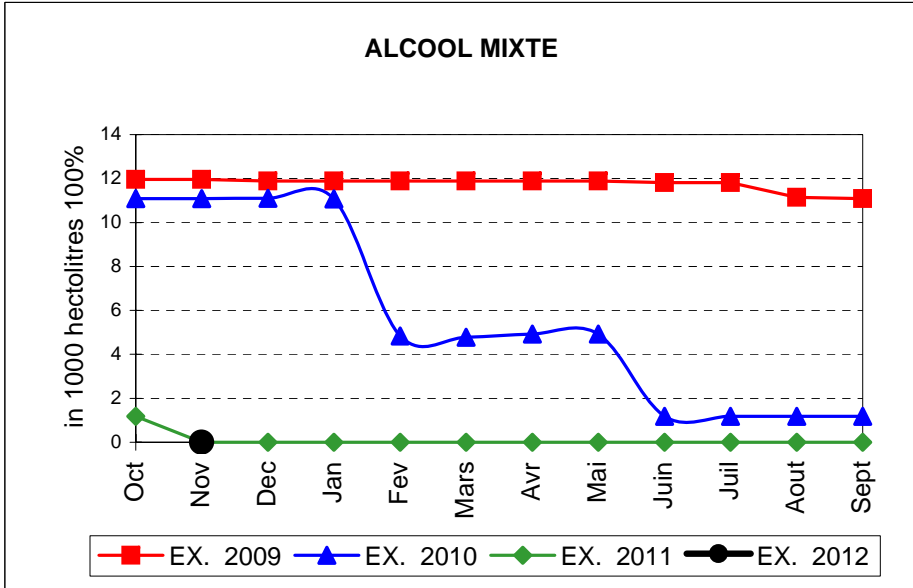
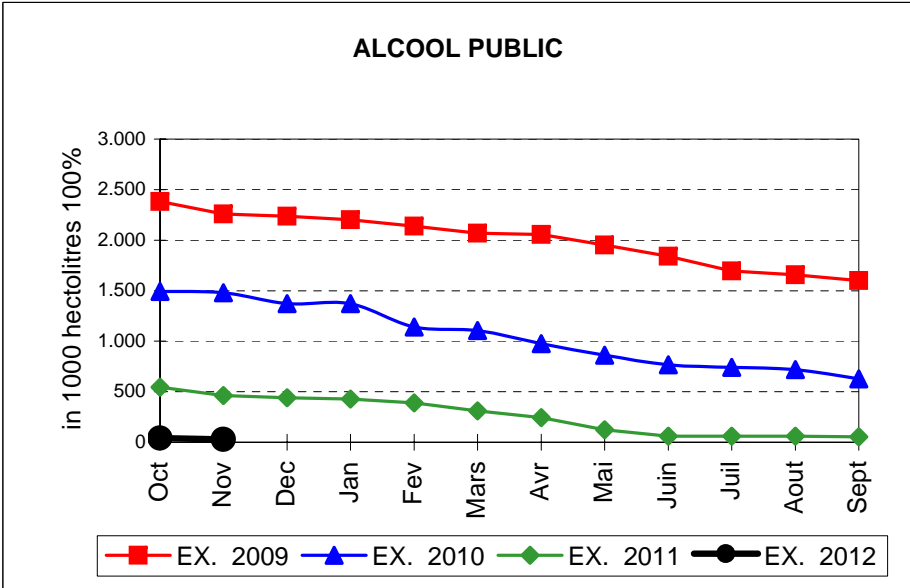
TOTAL CEREALES



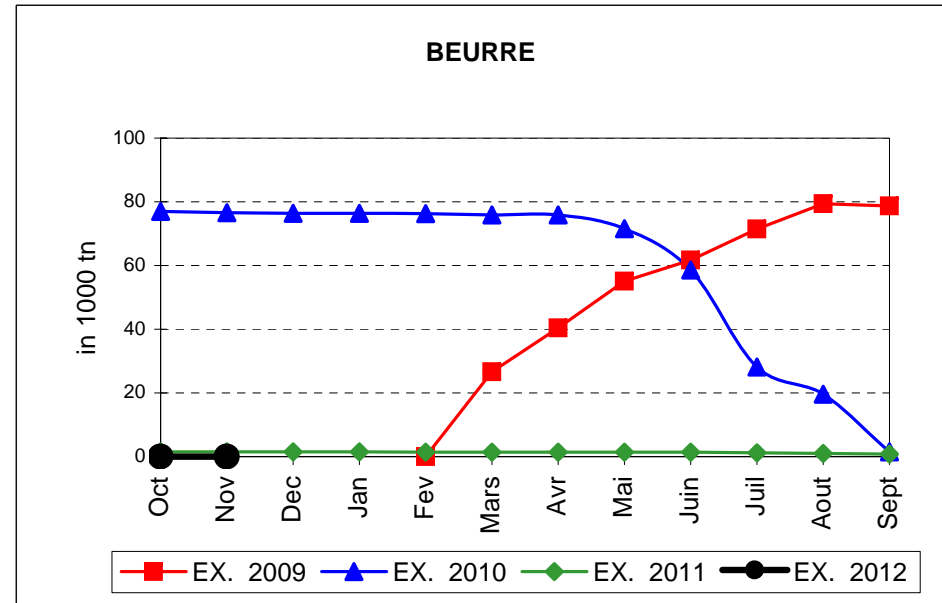
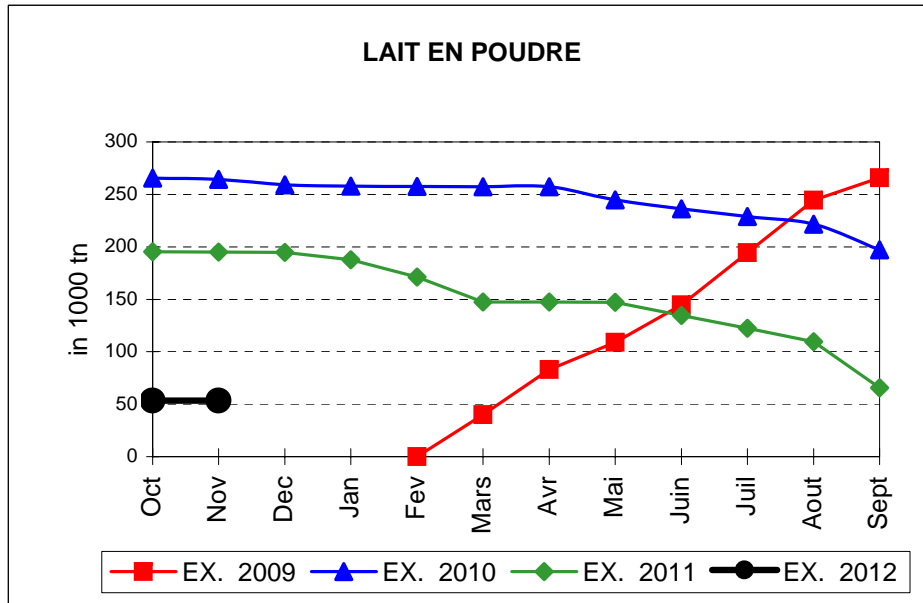
EVOLUTION IN QUANTITIES OF PUBLIC INTERVENTION STOCKS



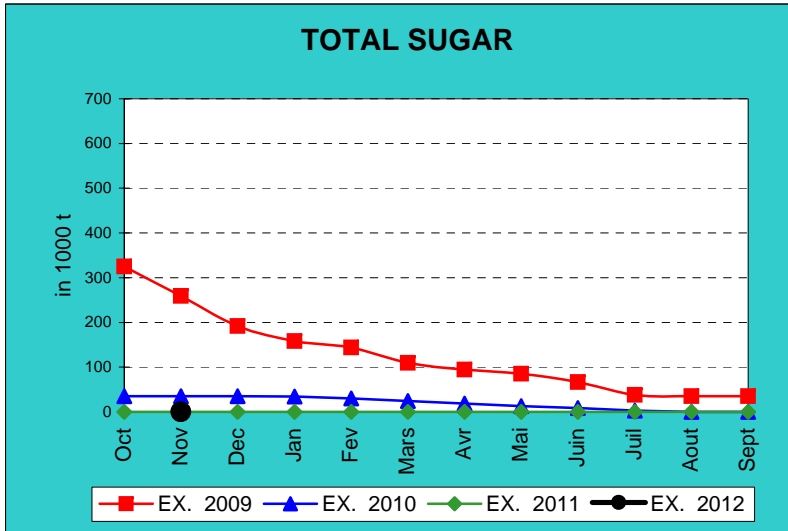
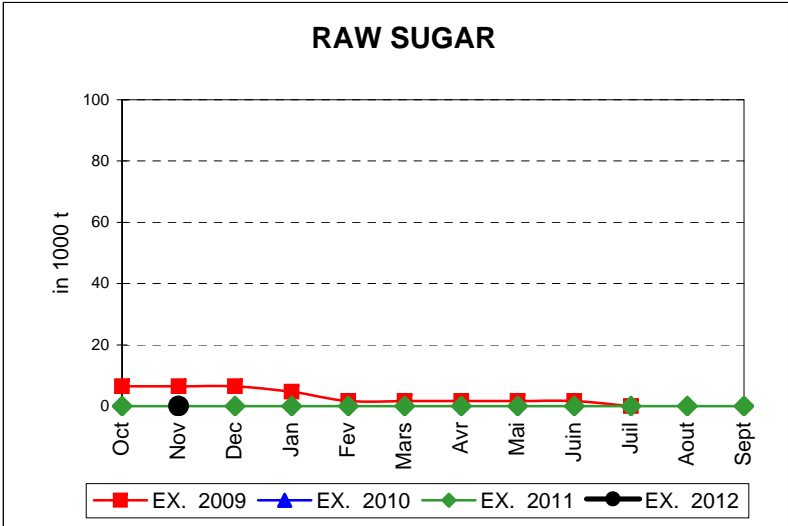
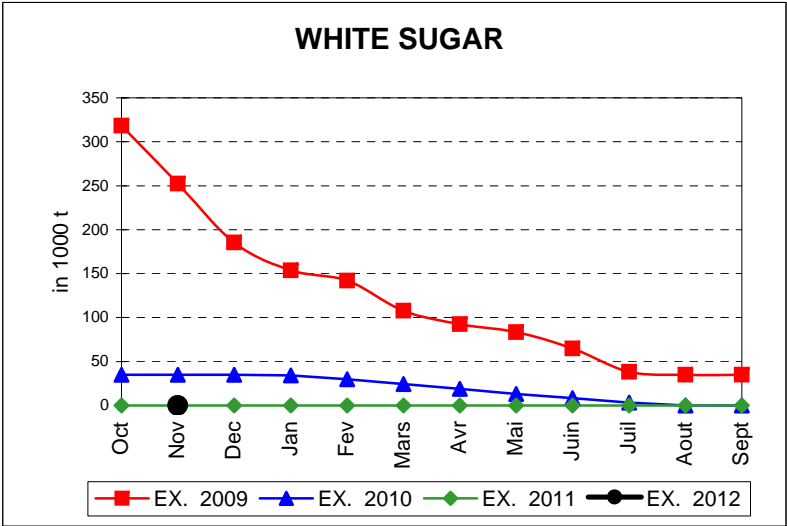
EVOLUTION IN QUANTITIES OF PUBLIC INTERVENTION STOCKS



EVOLUTION IN QUANTITIES OF PUBLIC INTERVENTION STOCKS

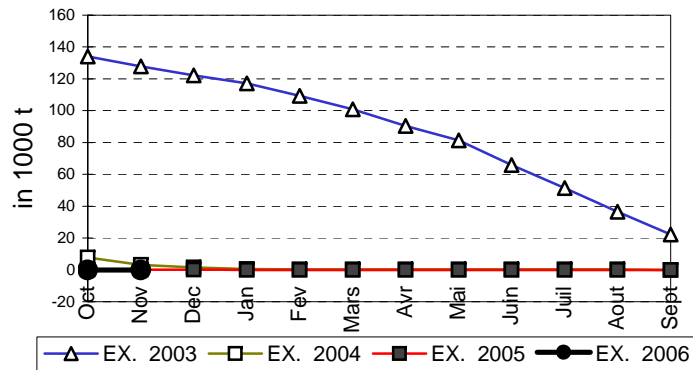


EVOLUTION IN QUANTITIES OF PUBLIC INTERVENTION STOCKS

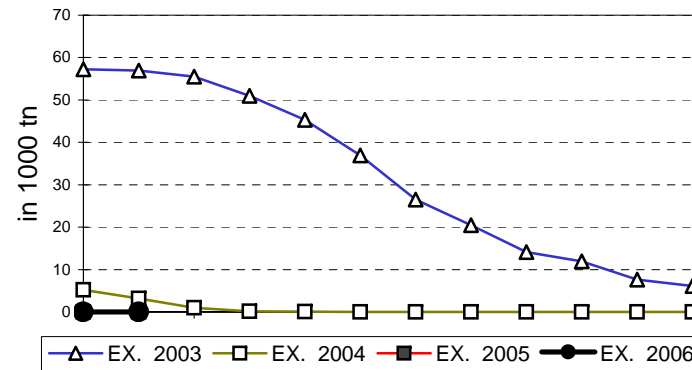


EVOLUTION IN QUANTITIES OF PUBLIC INTERVENTION STOCKS

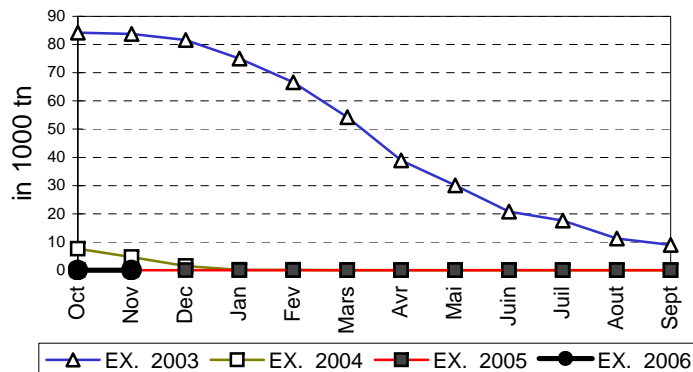
VIANDE BOVINE CARCASSES



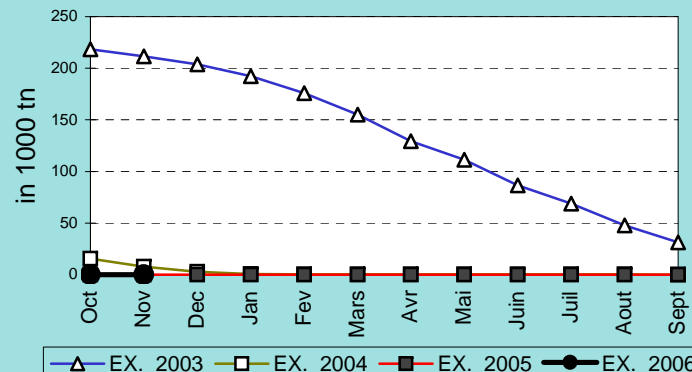
VIANDE BOVINE DESOSSEE



VIANDE DESOSSEE EN EQUIVALENT CARCASSES



TOTAL VIANDE EN EQUIVALENT CARCASSES



COMPARED WITH PREVIOUS MONTH

EU TOTAL	30-nov-11		31-oct-11		CHANGE IN QTY		CHANGE IN VALUE	
	QUANTITY (tn or hl)	VALUE (in Euro)	QUANTITY (tn or hl)	VALUE (in Euro)	ABSOLUTE (tn or hl)	%	ABSOLUTE (in Euro)	%
CLICK TOTALS FOR GRAPHICS	(a)	(b)	(c)	(d)	(e)=(a)-(c)	(f)=(e)/(c)*%	(g)=(b)-(d)	(h)=(g)/(d)*%
Blé panifiable								
Orge	162.584	16.446.034	165.326	16.717.618	-2.742	-2%	-271.584	-2%
Seigle								
Sorgho								
Mais								
TOTAL CEREALES	162.584	16.446.034	165.326	16.717.618	-2.742	-2%	-271.584	-2%
TOTAL RIZ								
Alcool Public	29.284	819.301	41.287	1.155.142	-12.003	-29%	-335.841	-29%
Alcool Mixte								
TOTAL ALCOOL (HL 100%)	29.284	819.301	41.287	1.155.142	-12.003	-29%	-335.841	-29%
LEP	53.555	79.830.823	53.555	79.830.823				
Beurre	1	2.922	1	2.922				
TOTAL LAIT ET BEURRE	53.557	79.833.745	53.557	79.833.745				
Sucre blanc								
Sucre brut								
TOTAL SUCRE								
Bov. carc.								
Bov. des.								
Eq. carc.								
TOTAL EQ. CARCASSES								
GRAND TOTAL		97.099.081		97.706.505			-607.424	-1%

SOURCE : The declarations of the Member States before controls.

COMPARED WITH PREVIOUS YEAR

EU TOTAL	30-nov-11		30-nov-10		CHANGE IN QTY		CHANGE IN VALUE	
	QUANTITY (tn or hl)	VALUE (in Euro)	QUANTITY (tn or hl)	VALUE (In Euro)	ABSOLUTE (tn or hl)	%	ABSOLUTE (in Euro)	%
CLICK TOTALS FOR GRAPHICS	(a)	(b)	(c)	(d)	(e)=(a)-(c)	(f)=(e)/(c)*%	(g)=(b)-(d)	(h)=(g)/(d)*%
Blé panifiable			234.577	23.710.941	-234.577	-100%	-23.710.941	-100%
Orge	162.584	16.446.034	5.326.155	540.451.267	-5.163.571	-97%	-524.005.233	-97%
Seigle								
Sorgho								
Mais			671	67.950	-671	-100%	-67.950	-100%
TOTAL CEREALES	162.584	16.446.034	5.561.403	564.230.159	-5.398.818	-97%	-547.784.124	-97%
TOTAL RIZ								
Alcool Public	29.284	819.301	462.423	15.723.176	-433.138	-94%	-14.903.875	-95%
Alcool Mixte			2	10	-2	-100%	-10	-100%
TOTAL ALCOOL (HL 100%)	29.284	819.301	462.425	15.723.186	-433.141	-94%	-14.903.884	-95%
LEP	53.555	79.830.823	195.157	291.058.002	-141.602	-73%	-211.227.180	-73%
Beurre	1	2.922	1.544	3.341.537	-1.543	-100%	-3.338.615	-100%
TOTAL LAIT ET BEURRE	53.557	79.833.745	196.701	294.399.539	-143.145	-73%	-214.565.794	-73%
Sucre blanc			9	3.052	-9	-100%	-3.052	-100%
Sucre brut								
TOTAL SUCRE			9	3.052	-9	-100%	-3.052	-100%
Bov. carc.								
Bov. des.								
Eq. carc.								
TOTAL EQ. CARCASSES								
GRAND TOTAL		97.099.081		874.355.935			-777.256.855	-89%

SOURCE :

The declarations of the Member States before controls.

THE PUBLIC STORAGE FLASH REPORT AS AT						30-nov-11			
ESPAÑA									
PRODUCTS	YEAR-TO-DATE		OPENING BALANCE		CHANGE IN QTY		CHANGE IN VALUE		
	QUANTITY (in tonnes or hl)	VALUE (in Euro)	QUANTITY (in tonnes or hl)	VALUE (in Euro)	ABSOLUTE (in tonnes or hl)	%	ABSOLUTE (in Euro)	%	
	(a)	(b)	(c)	(d)	(e)=(a)-(c)	(f)=(e)/(c)*%	(g)=(b)-(d)	(h)=(g)/(d)*%	
Ble panifiable									
Orge									
Seigle									
Sorgho									
Mais									
TOTAL CEREALES									
RIZ									
Alcool Public									
Alcool Mixte									
TOT. ALCOOL (HL)									
LEP									
Beurre									
TOTAL L & B									
Sucre Blanc									
Sucre Brut									
TOTAL SUCRE									
Bov. carc.									
Bov. des.									
Eq. carc.									
TOTAL EQ. CARC.									
GRAND TOTAL									

