

CHOOSE COUNTRY

EU TOTAL	YEAR-TO-DATE		OPENING BALANCE <sup>(1)</sup>		CHANGE IN QTY		CHANGE IN VALUE	
	QUANTITY (tn or hl)	VALUE (in Euro)	QUANTITY (tn or hl)	VALUE (in Euro)	ABSOLUTE (tn or hl)	%	ABSOLUTE (in Euro)	%
CLICK TOTALS FOR GRAPHICS	(a)	(b)	(c)	(d)	(e)=(a)-(c)	(f)=(e)/(c)*%	(g)=(b)-(d)	(h)=(g)/(d)*%
Blé panifiable								
Orge	9.003	912.073	9.003	912.073				
Seigle								
Sorgho								
Mais								
<b>TOTAL CEREALES</b>	<b>9.003</b>	<b>912.073</b>	<b>9.003</b>	<b>912.073</b>				
<b>TOTAL RIZ</b>								
Alcool Public								
Alcool Mixte								
<b>TOTAL ALCOOL (HL 100%)</b>								
LEP								
Beurre								
<b>TOTAL LAIT ET BEURRE</b>								
Sucre Blanc								
Sucre Brut								
<b>TOTAL SUCRE</b>								
Bov. carc.								
Bov. des.								
Eq. carc.								
<b>TOTAL EQ. CARCASSES</b>								
<b>GRAND TOTAL</b>		<b>912.073</b>		<b>912.073</b>				

SOURCE : The declarations of the Member States before controls.

(1) Period 13/2012

quantities are expressed in  
tonnes (alcohol in hl 100%)

ACCOUNTING VALUE OF THE PUBLIC INTERVENTION STOCKS AS AT :  
(BEFORE THE COMPLEMENTARY DEPRECIATION)

30-nov-12

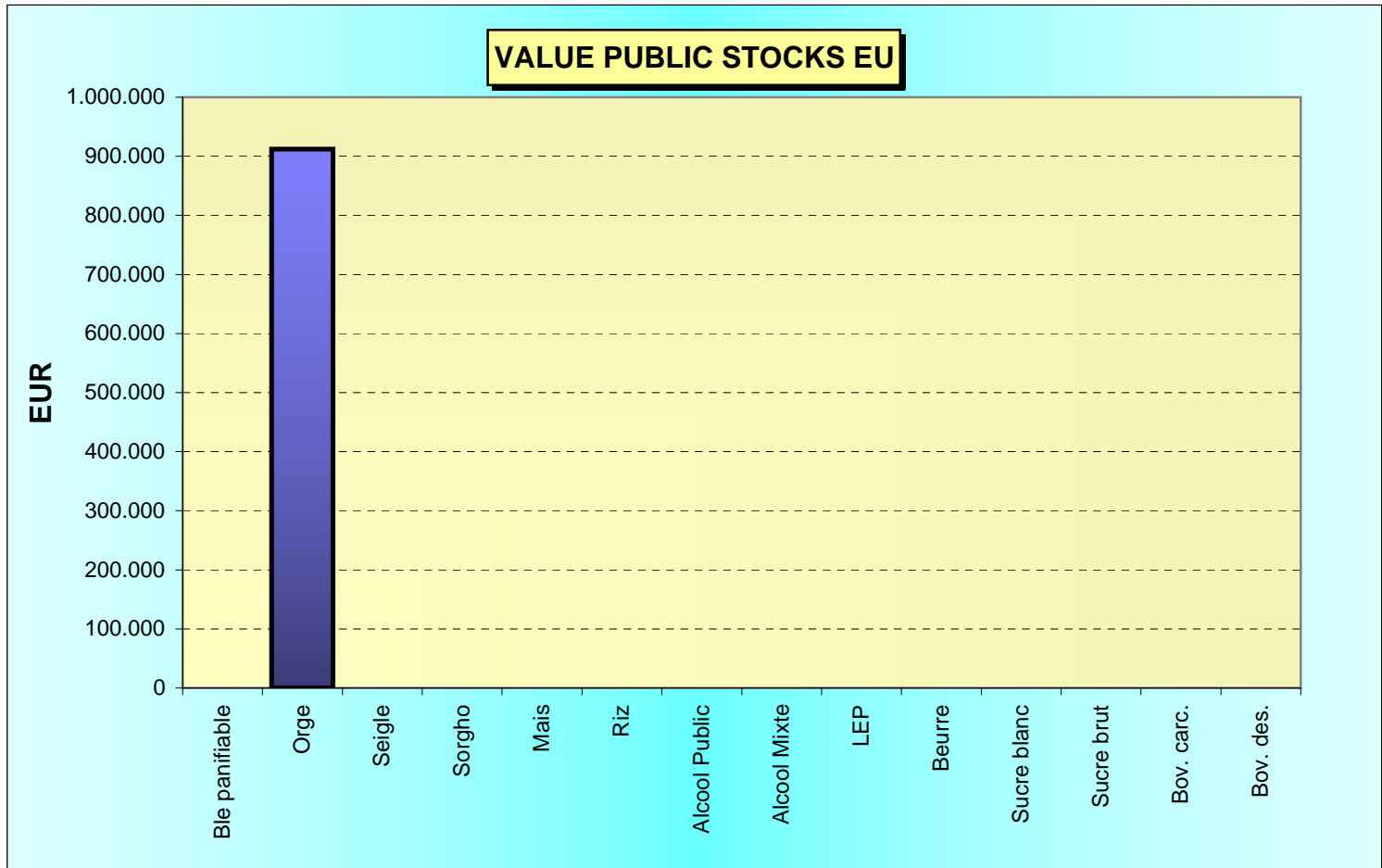
AGRI I.4

G. MERTENS tel. 65910

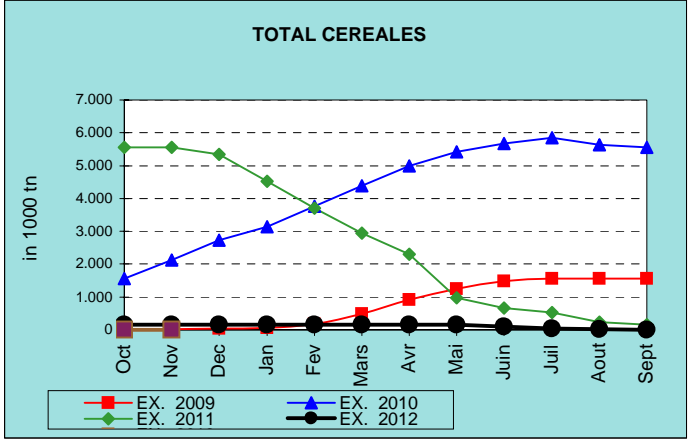
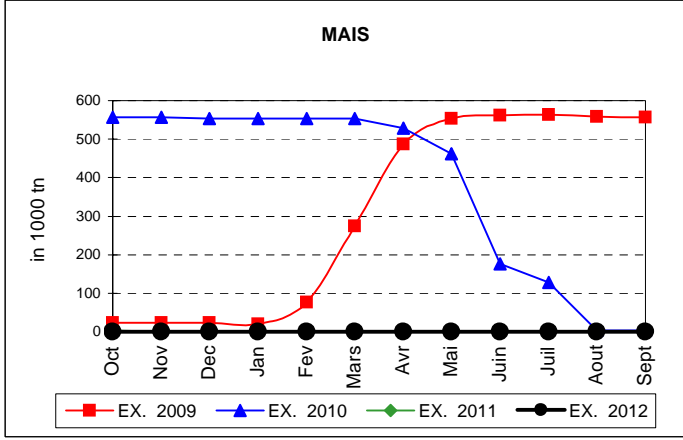
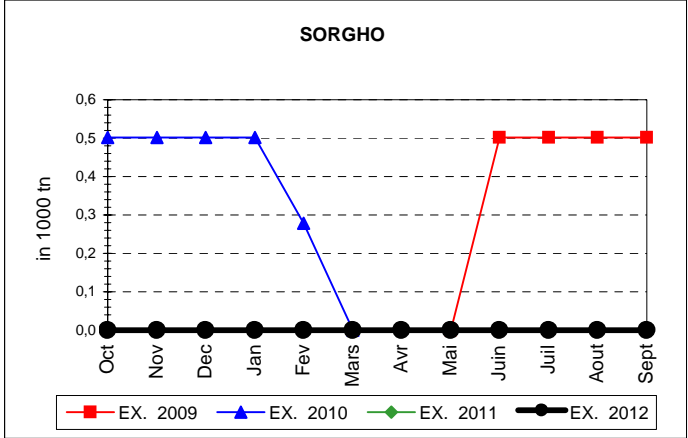
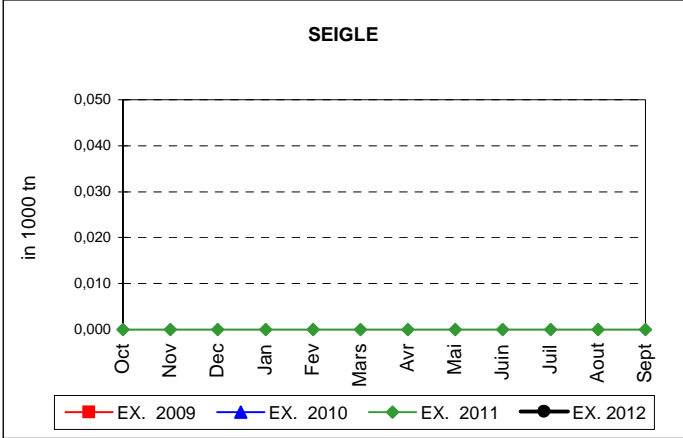
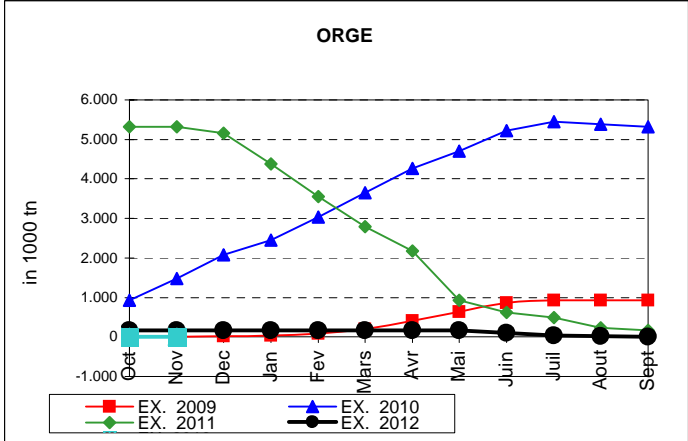
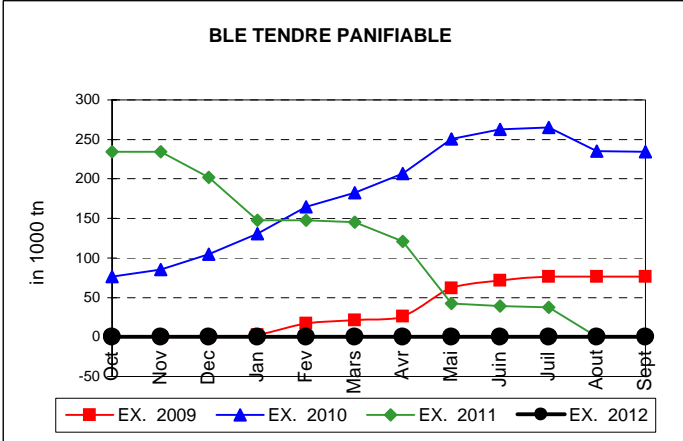
Produits		BE	BG	CZ	DK	DE	EE	IE	EL	ES	FR	IT	CY	LV	LT	LU	HU	MT	NL	OS	PL	PO	RO	SI	SK	FIN	SE	UK	TOTAL	
BLE PANIF	quant.																													
	valeur																													
ORGE	quant.										147																	8.856		
	valeur										14.893																		897.181	
SEIGLE	quant.																													
	valeur																													
SORGHO	quant.																													
	valeur																													
MAIS	quant.																													
	valeur																													
TOT.CER	quant.										147																	8.856		
	valeur																													
RIZ	quant.																													
	valeur																													
ALC.P.	quant.																													
	valeur																													
ALC.M.	quant.																													
	valeur																													
TOT.ALC.	quant.																													
	valeur																													
LEP	quant.																													
	valeur																													
BEURRE	quant.																													
	valeur																													
TOT L&B	quant.																													
	valeur																													
S. BLANC	quant.																													
	valeur																													
S. BRUT	quant.																													
	valeur																													
TOT. SUC	quant.																													
	valeur																													
BOV.QUA	quant.																													
	valeur																													
BOV.DES	quant.																													
	valeur																													
EQ. CARC	quant.																													
TOT EQ	quant.																													
	valeur																													
EU TOTAL	valeur										14.893																		897.181	912.073

30-nov-12

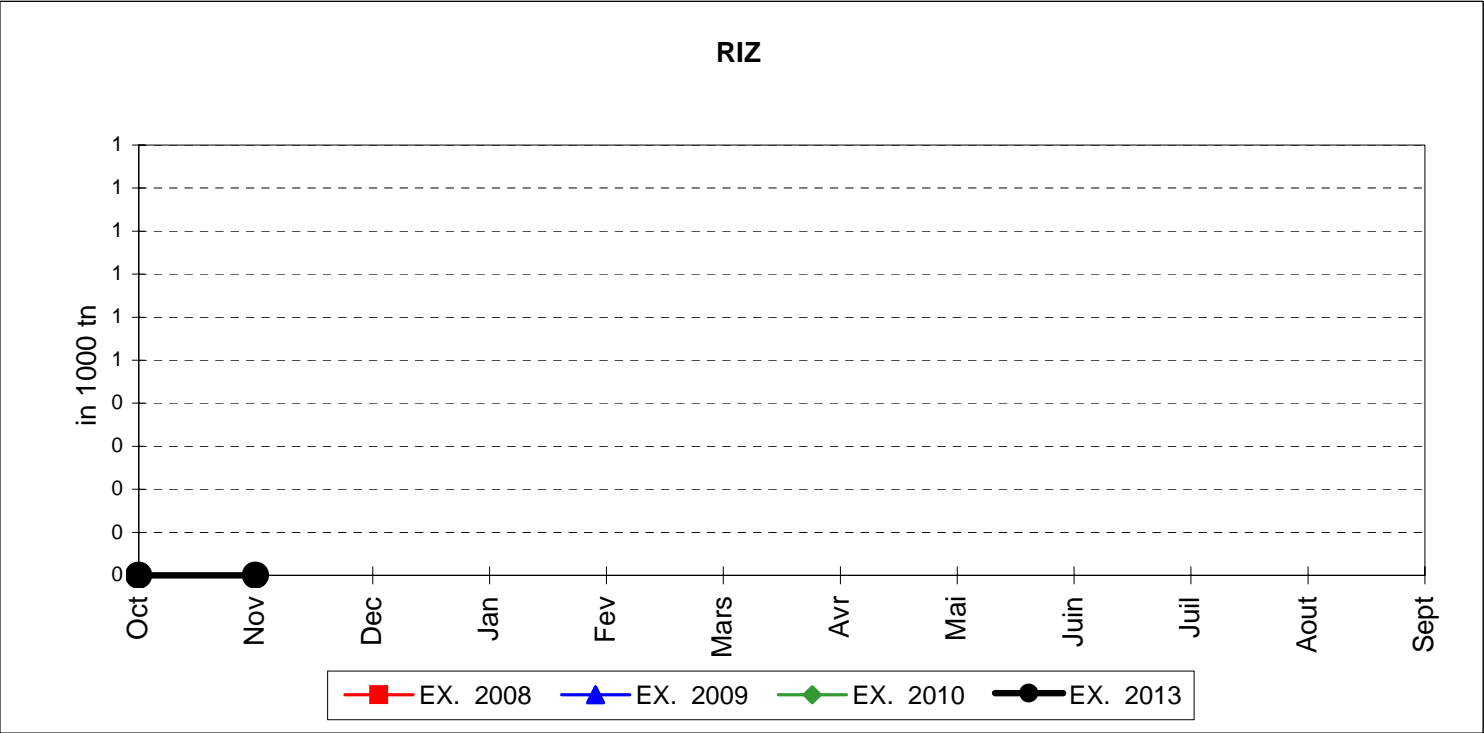
**PUBLIC INTERVENTION STOCKS**



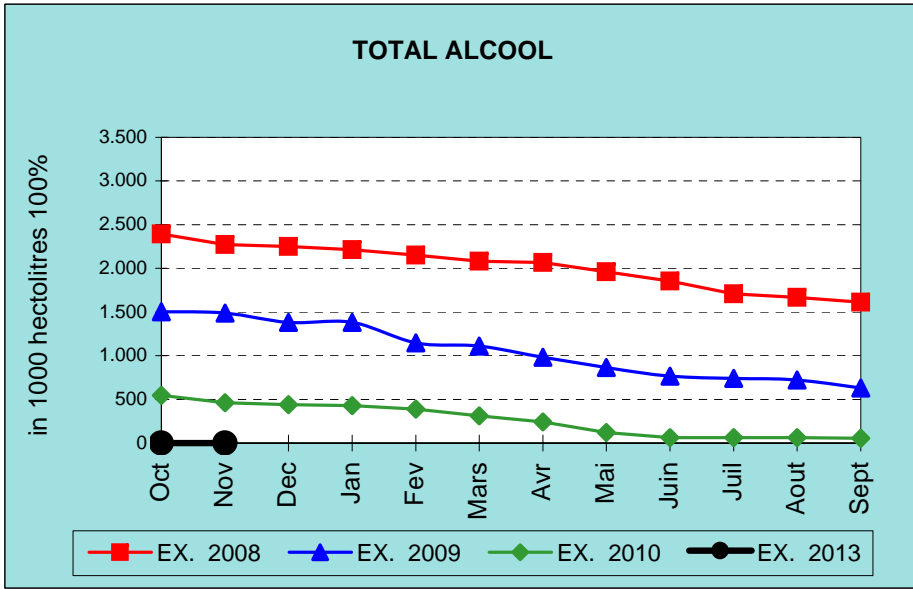
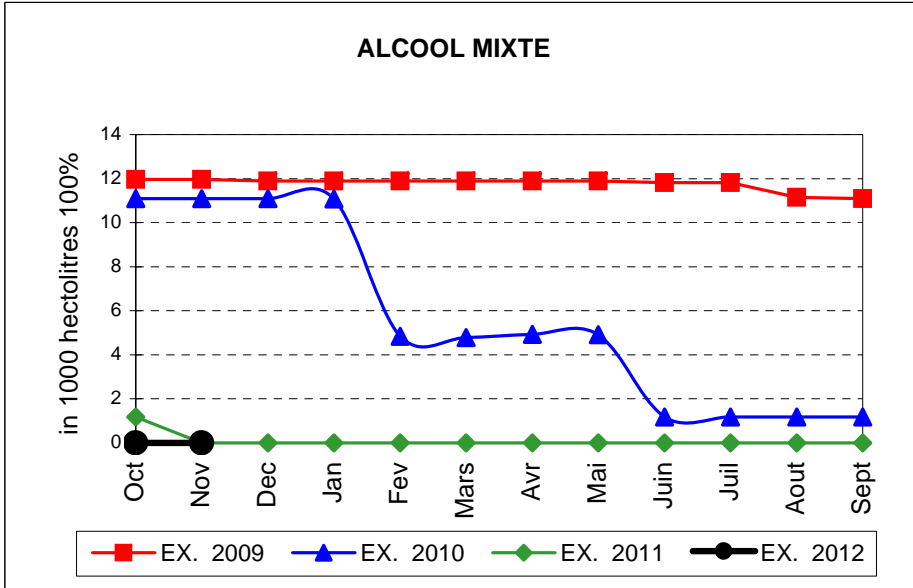
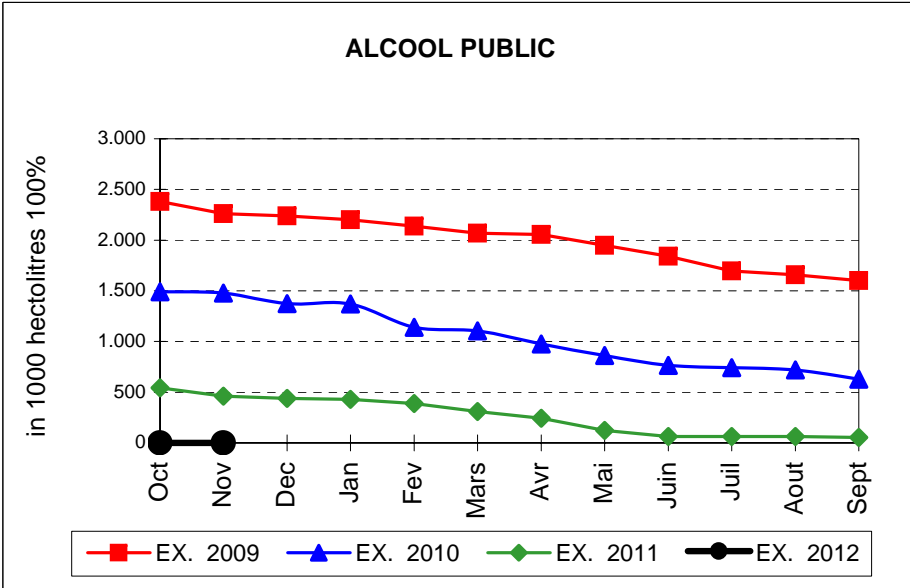
# EVOLUTION IN QUANTITIES OF PUBLIC INTERVENTION STOCKS



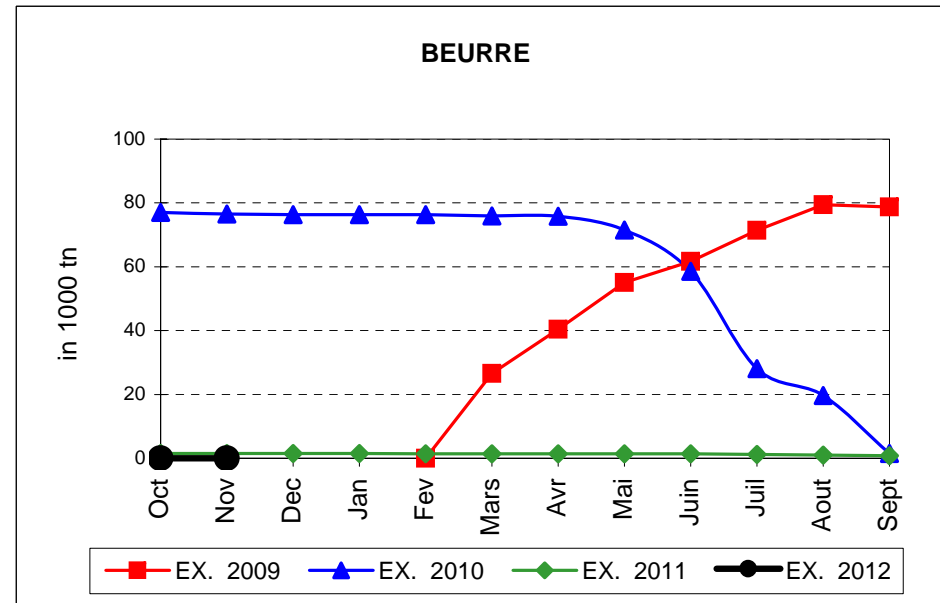
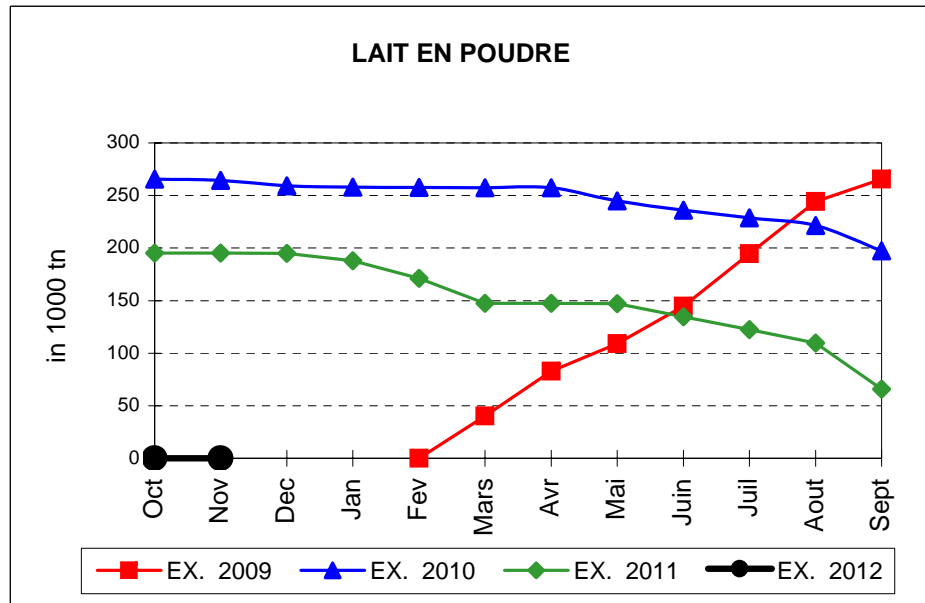
# EVOLUTION IN QUANTITIES OF PUBLIC INTERVENTION STOCKS



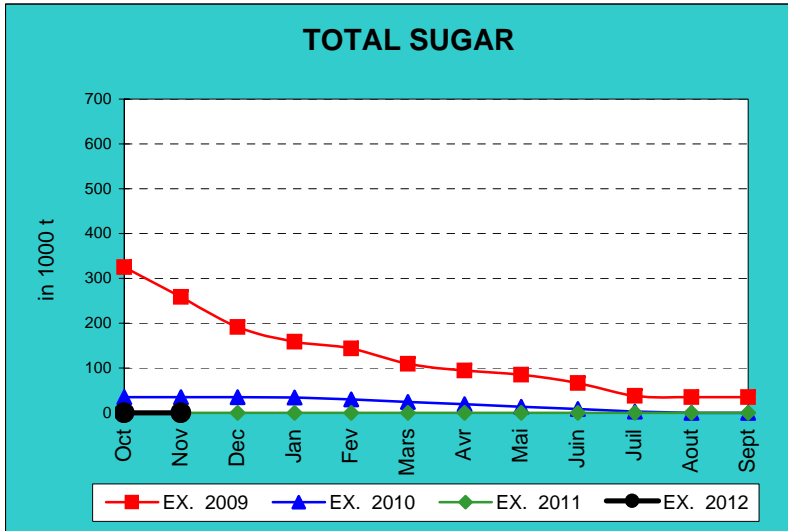
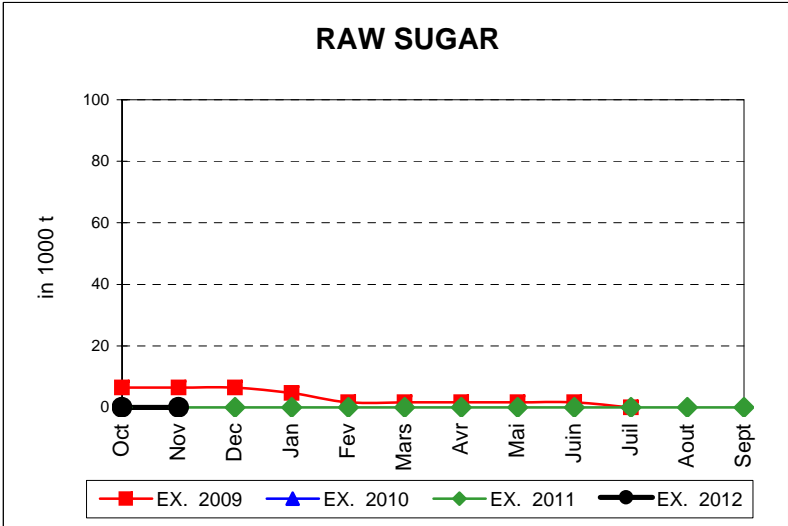
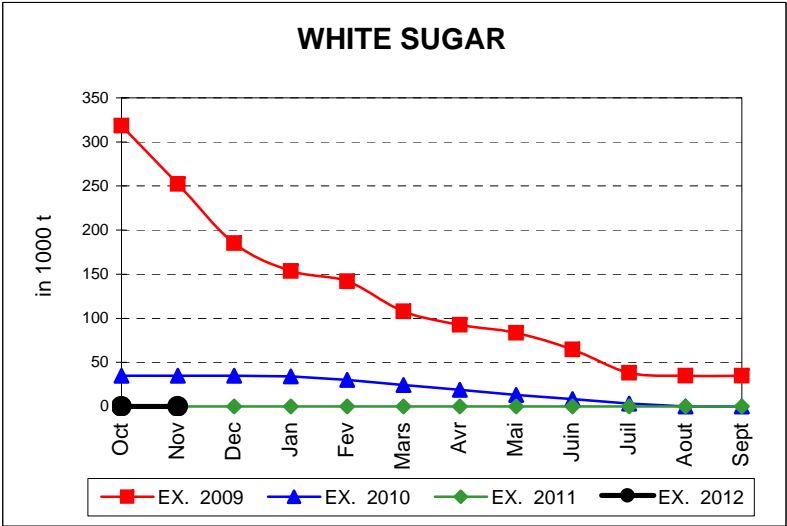
# EVOLUTION IN QUANTITIES OF PUBLIC INTERVENTION STOCKS



## EVOLUTION IN QUANTITIES OF PUBLIC INTERVENTION STOCKS



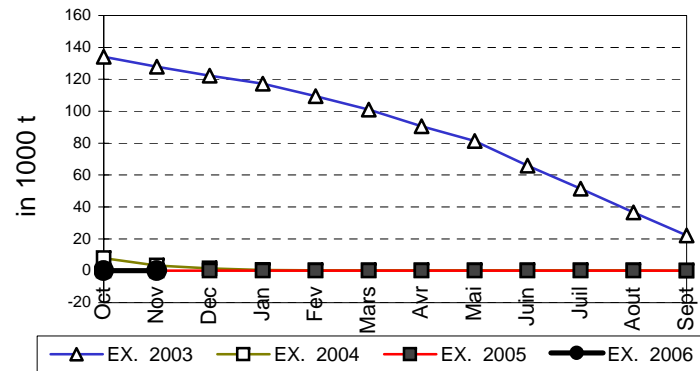
# EVOLUTION IN QUANTITIES OF PUBLIC INTERVENTION STOCKS



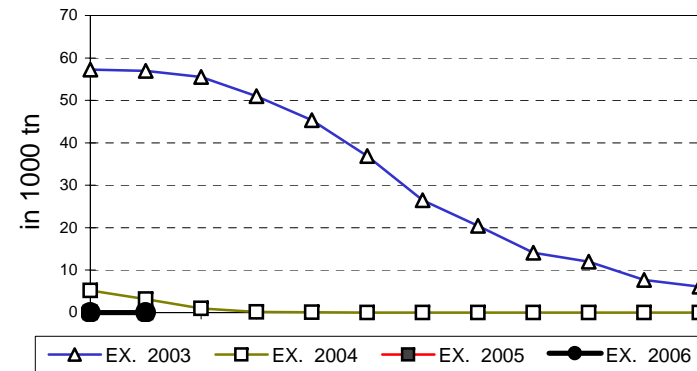


## EVOLUTION IN QUANTITIES OF PUBLIC INTERVENTION STOCKS

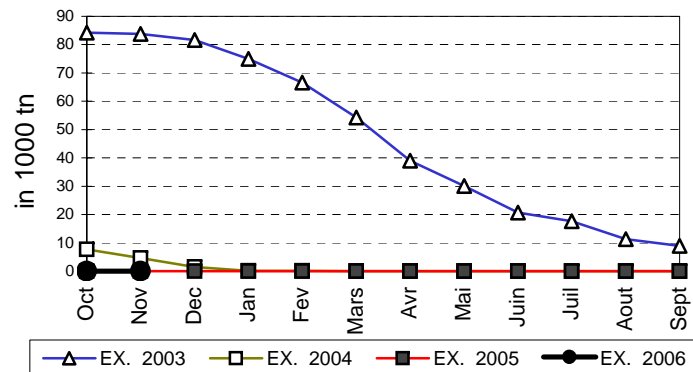
### VIANDE BOVINE CARCASSES



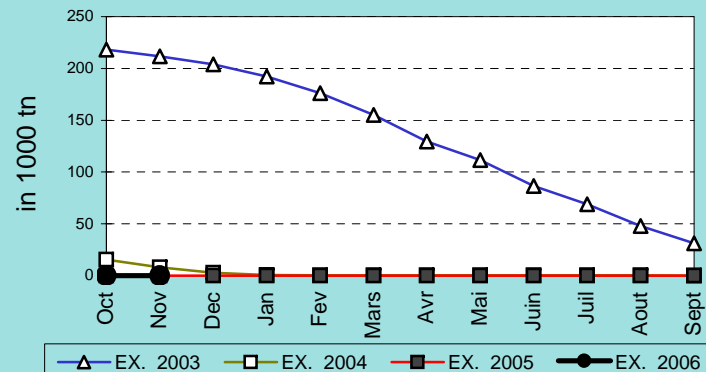
### VIANDE BOVINE DESOSSEE



### VIANDE DESOSSEE EN EQUIVALENT CARCASSES



### TOTAL VIANDE EN EQUIVALENT CARCASSES



**COMPARED WITH PREVIOUS MONTH**

EU TOTAL	30-nov-12		31-oct-12		CHANGE IN QTY		CHANGE IN VALUE	
	QUANTITY (tn or hl)	VALUE (in Euro)	QUANTITY (tn or hl)	VALUE (In Euro)	ABSOLUTE (tn or hl)	%	ABSOLUTE (in Euro)	%
CLICK TOTALS FOR GRAPHICS	(a)	(b)	(c)	(d)	(e)=(a)-(c)	(f)=(e)/(c)*%	(g)=(b)-(d)	(h)=(g)/(d)*%
Blé panifiable								
Orge	9.003	912.073	9.003	912.073				
Seigle								
Sorgho								
Mais								
<b>TOTAL CEREALES</b>	<b>9.003</b>	<b>912.073</b>	<b>9.003</b>	<b>912.073</b>				
<b>TOTAL RIZ</b>								
Alcool Public								
Alcool Mixte								
<b>TOTAL ALCOOL (HL 100%)</b>								
LEP								
Beurre								
<b>TOTAL LAIT ET BEURRE</b>								
Sucre blanc								
Sucre brut								
<b>TOTAL SUCRE</b>								
Bov. carc.								
Bov. des.								
Eq. carc.								
<b>TOTAL EQ. CARCASSES</b>								
<b>GRAND TOTAL</b>		<b>912.073</b>		<b>912.073</b>				

SOURCE : The declarations of the Member States before controls.

## COMPARED WITH PREVIOUS YEAR

EU TOTAL	30-nov-12		30-nov-11		CHANGE IN QTY		CHANGE IN VALUE	
	QUANTITY (tn or hl)	VALUE (in Euro)	QUANTITY (tn or hl)	VALUE (In Euro)	ABSOLUTE (tn or hl)	%	ABSOLUTE (in Euro)	%
CLICK TOTALS FOR GRAPHICS	(a)	(b)	(c)	(d)	(e)=(a)-(c)	(f)=(e)/(c)*%	(g)=(b)-(d)	(h)=(g)/(d)*%
<b>Blé panifiable</b>								
<b>Orge</b>	9.003	912.073	162.584	16.446.034	-153.581	-94%	-15.533.961	-94%
<b>Seigle</b>								
<b>Sorgho</b>								
<b>Mais</b>								
<b>TOTAL CEREALES</b>	<b>9.003</b>	<b>912.073</b>	<b>162.584</b>	<b>16.446.034</b>	<b>-153.581</b>	<b>-94%</b>	<b>-15.533.961</b>	<b>-94%</b>
<b>TOTAL RIZ</b>								
<b>Alcool Public</b>			29.284	819.301	-29.284	-100%	-819.301	-100%
<b>Alcool Mixte</b>								
<b>TOTAL ALCOOL (HL 100%)</b>			<b>29.284</b>	<b>819.301</b>	<b>-29.284</b>	<b>-100%</b>	<b>-819.301</b>	<b>-100%</b>
<b>LEP</b>			53.555	79.830.823	-53.555	-100%	-79.830.823	-100%
<b>Beurre</b>			1	2.922	-1	-100%	-2.922	-100%
<b>TOTAL LAIT ET BEURRE</b>			<b>53.557</b>	<b>79.833.745</b>	<b>-53.557</b>	<b>-100%</b>	<b>-79.833.745</b>	<b>-100%</b>
<b>Sucre blanc</b>								
<b>Sucre brut</b>								
<b>TOTAL SUCRE</b>								
<b>Bov. carc.</b>								
<b>Bov. des.</b>								
<b>Eq. carc.</b>								
<b>TOTAL EQ. CARCASSES</b>								
<b>GRAND TOTAL</b>		<b>912.073</b>		<b>97.099.081</b>			<b>-96.187.008</b>	<b>-99%</b>

SOURCE :

The declarations of the Member States before controls.

THE PUBLIC STORAGE FLASH REPORT AS AT										30-nov-12	
ESPAÑA											
PRODUCTS	YEAR-TO-DATE				OPENING BALANCE		CHANGE IN QTY		CHANGE IN VALUE		
	QUANTITY	(in VALUE	(in	QUANTITY	VALUE	ABSOLUTE	%	ABSOLUTE	%		
	(tonnes or hl)	(Euro)	(in	(in tonnes or hl)	(In Euro)	(in tonnes or hl)	(f)=(e)/(c)*%	(in Euro)	(h)=(g)/(d)*%		
	(a)	(b)	(c)	(d)	(e)=(a)-(c)	(f)=(e)/(c)*%	(g)=(b)-(d)	(h)=(g)/(d)*%			
Ble panifiable											
Orge											
Seigle											
Sorgho											
Mais											
<b>TOTAL CEREALES</b>											
<b>RIZ</b>											
Alcool Public											
Alcool Mixte											
<b>TOT. ALCOOL (HL)</b>											
LEP											
Beurre											
<b>TOTAL L &amp; B</b>											
Sucre Blanc											
Sucre Brut											
<b>TOTAL SUCRE</b>											
Bov. carc.											
Bov. des.											
Eq. carc.											
<b>TOTAL EQ. CARC.</b>											
<b>GRAND TOTAL</b>											

30-nov-12

