

CHOOSE COUNTRY

EU TOTAL	YEAR-TO-DATE		OPENING BALANCE (1)		CHANGE IN QTY		CHANGE IN VALUE	
	QUANTITY (tn or hl)	VALUE (in Euro)	QUANTITY (tn or hl)	VALUE (In Euro)	ABSOLUTE (tn or hl)	%	ABSOLUTE (in Euro)	%
CLICK TOTALS FOR GRAPHICS	(a)	(b)	(c)	(d)	(e)=(a)-(c)	(f)=(e)/(c)*%	(g)=(b)-(d)	(h)=(g)/(d)*%
Blé panifiable	104.711	10.819.115	76.703	7.911.093	28.008	37%	2.908.022	37%
Orge	2.072.302	208.721.218	925.385	94.445.665	1.146.917	124%	114.275.553	121%
Seigle								
Sorgho	501	50.792	502	50.812	0	0%	-20	0%
Mais	554.150	56.310.971	556.111	56.510.040	-1.961	0%	-199.069	0%
TOTAL CEREALES	2.731.665	275.902.095	1.558.701	158.917.609	1.172.965	75%	116.984.486	74%
TOTAL RIZ								
Alcool Public	1.372.174	50.886.261	1.600.049	59.312.261	-227.875	-14%	-8.426.000	-14%
Alcool Mixte	11.095	180.908	11.067	180.503	29	0%	405	0%
TOTAL ALCOOL (HL 100%)	1.383.269	51.067.169	1.611.116	59.492.764	-227.847	-14%	-8.425.595	-14%
LEP	259.096	386.581.635	268.527	400.661.815	-9.430	-4%	-14.080.179	-4%
Beurre	76.353	166.308.737	78.688	171.396.018	-2.335	-3%	-5.087.280	-3%
TOTAL LAIT ET BEURRE	335.449	552.890.373	347.215	572.057.832	-11.765	-3%	-19.167.460	-3%
Sucre Blanc	34.830	11.227.656	34.080	10.975.054	750	2%	252.603	2%
Sucre Brut								
TOTAL SUCRE	34.830	11.227.656	34.080	10.975.054	750	2%	252.603	2%
Bov. carc.								
Bov. des.								
Eq. carc.								
TOTAL EQ. CARCASSES								
GRAND TOTAL		891.087.293		801.443.260			89.644.033	11%

SOURCE : The declarations of the Member States before controls.

(1) Period 13/2009 annual declaration

quantities are expressed in
tonnes (alcohol in hl 100%)

ACCOUNTING VALUE OF THE PUBLIC INTERVENTION STOCKS AS AT :
(BEFORE THE COMPLEMENTARY DEPRECIATION)

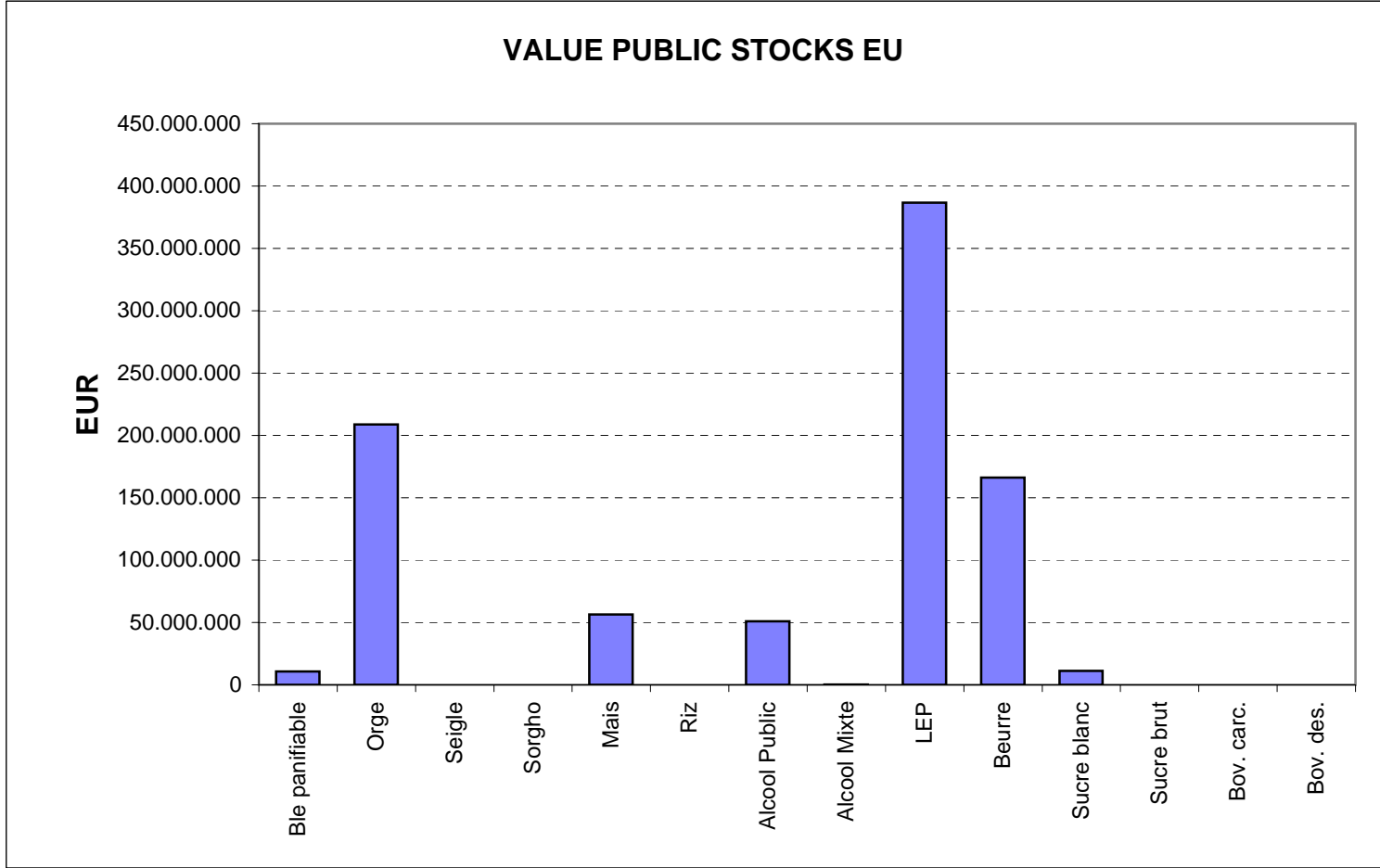
31-dic-09

AGRI I.4

J. FLORET tel. 53236

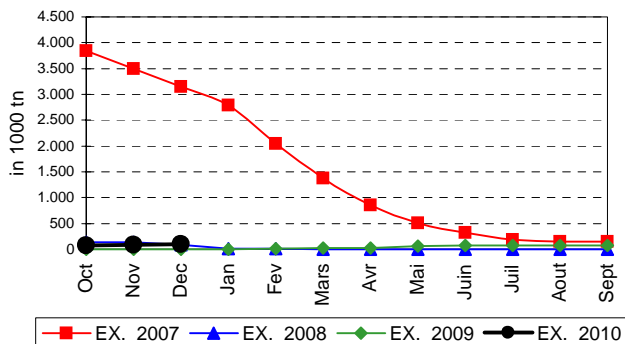
Produits		BE	BG	CZ	DK	DE	EE	IE	EL	ES	FR	IT	CY	LV	LT	LU	HU	MT	NL	OS	PL	PO	RO	SI	SK	FIN	SE	UK	TOTAL	
BLE PANIF	quant.		3.013	57.910											91	31.821				1.382					9.171	1.324			104.711	
	valeur		305.224	6.060.255												8.867	3.221.841				140.010					949.788	133.129			10.819.115
ORGE	quant.	9.345		188.493		889.607	15.778				8.112			7.938	138.774		163.031			6.852	207.403				24.083	318.162	82.067	12.656	2.072.302	
	valeur	928.232		19.812.487		88.809.473	1.588.499				812.726			793.839	13.952.301		16.506.907				694.224	20.785.937				2.508.476	32.153.501	8.106.627	1.267.988	208.721.218
SEIGLE	quant.																													
	valeur																													
SORGHO	quant.																501													501
	valeur																50.792													
MAIS	quant.																443.746								110.404					554.150
	valeur																44.951.481								11.359.489					56.310.971
TOT.CER	quant.	9.345	3.013	246.403		889.607	15.778				8.112			7.938	138.865		639.099			6.852	208.785				143.659	319.486	82.067	12.656	2.731.665	
RIZ	quant.																													
	valeur																													
ALC.P.	quant.								60.269	549.013	341.159	287.276	7.219				55.116													1.372.174
	valeur								2.229.366	20.434.263	12.626.291	10.623.461	266.516				2.039.291													50.886.261
ALC.M.	quant.										1.024	10.071																		11.095
	valeur										4.054	176.854																		180.908
TOT.ALC.	quant.								60.269	549.013	342.183	297.347	7.219				55.116													1.383.269
LEP	quant.	24.122		3.766		63.775	2.634	32.175		1.382	56.466				10.344				19.860		20.549	2.755				1.552	3.614	16.102	259.096	
	valeur	35.721.397		5.932.845		94.890.599	3.768.210	48.065.687		2.105.975	84.601.691				15.503.069				29.689.359		30.469.181	4.124.027				2.324.663	5.412.002	23.972.930	386.581.635	
BEURRE	quant.	3.232		527		9.894	1.153	14.213		9.336	13.124				1.838				11.541		1.901	5.079						4.516	76.353	
	valeur	7.045.459		1.200.445		21.567.767	2.355.675	30.983.201		20.338.943	28.592.989				4.005.779				25.158.335		4.146.093	11.071.712						9.842.340	166.308.737	
TOT L&B	quant.	27.354		4.293		73.669	3.787	46.388		10.718	69.589				12.181				31.401		22.449	7.834				1.552	3.614	20.618	335.449	
S. BLANC	quant.	1.109		2.138				1.392							30.191															34.830
	valeur	324.441		720.950				404.975							9.777.291															11.227.656
S. BRUT	quant.																													
	valeur																													
TOT. SUC	quant.	1.109		2.138				1.392							30.191															34.830
BOV.QUA	quant.																													
	valeur																													
BOV.DES	quant.																													
	valeur																													
EQ. CARC	quant.																													
TOT EQ	quant.																													
EU TOTAL	valeur	44.019.528	305.224	33.726.981		205.267.840	7.712.384	79.453.862	2.229.366	42.879.180	126.637.751	20.577.605	266.516	793.839	33.470.015	66.770.312			54.847.694	694.224	55.541.222	17.862.813			14.817.755	34.611.294	13.518.630	35.083.258	891.087.293	

PUBLIC INTERVENTION STOCKS

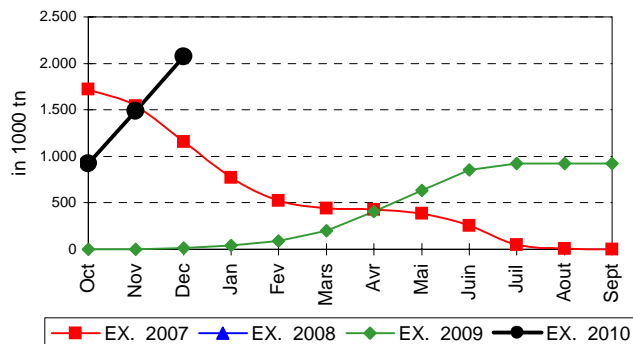


EVOLUTION IN QUANTITIES OF PUBLIC INTERVENTION STOCKS

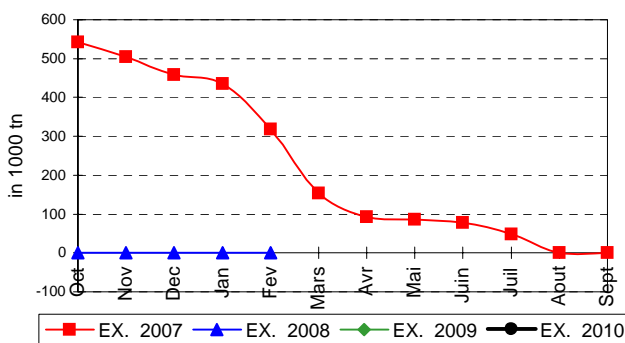
BLE TENDRE PANIFIABLE



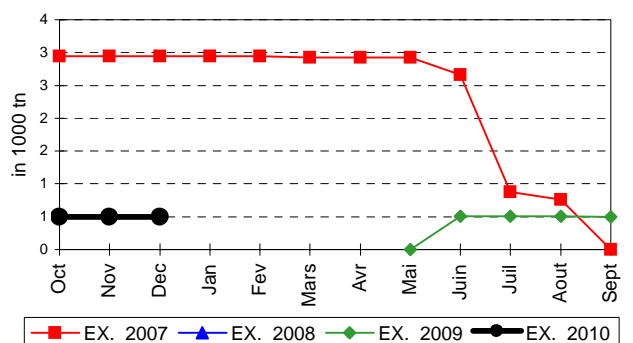
ORGE



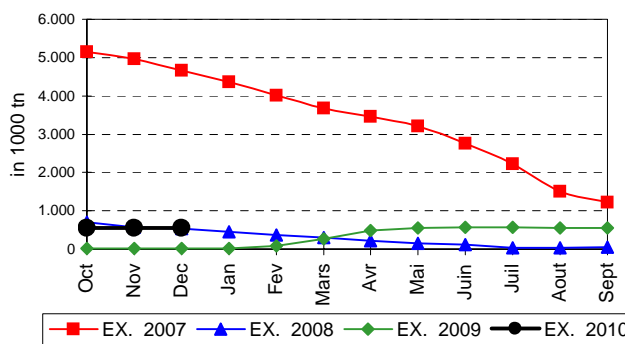
SEIGLE



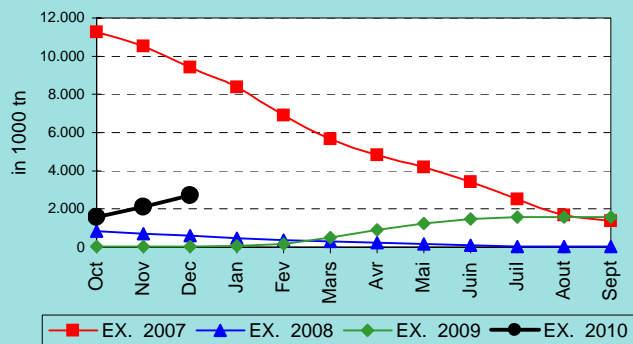
SORGHO



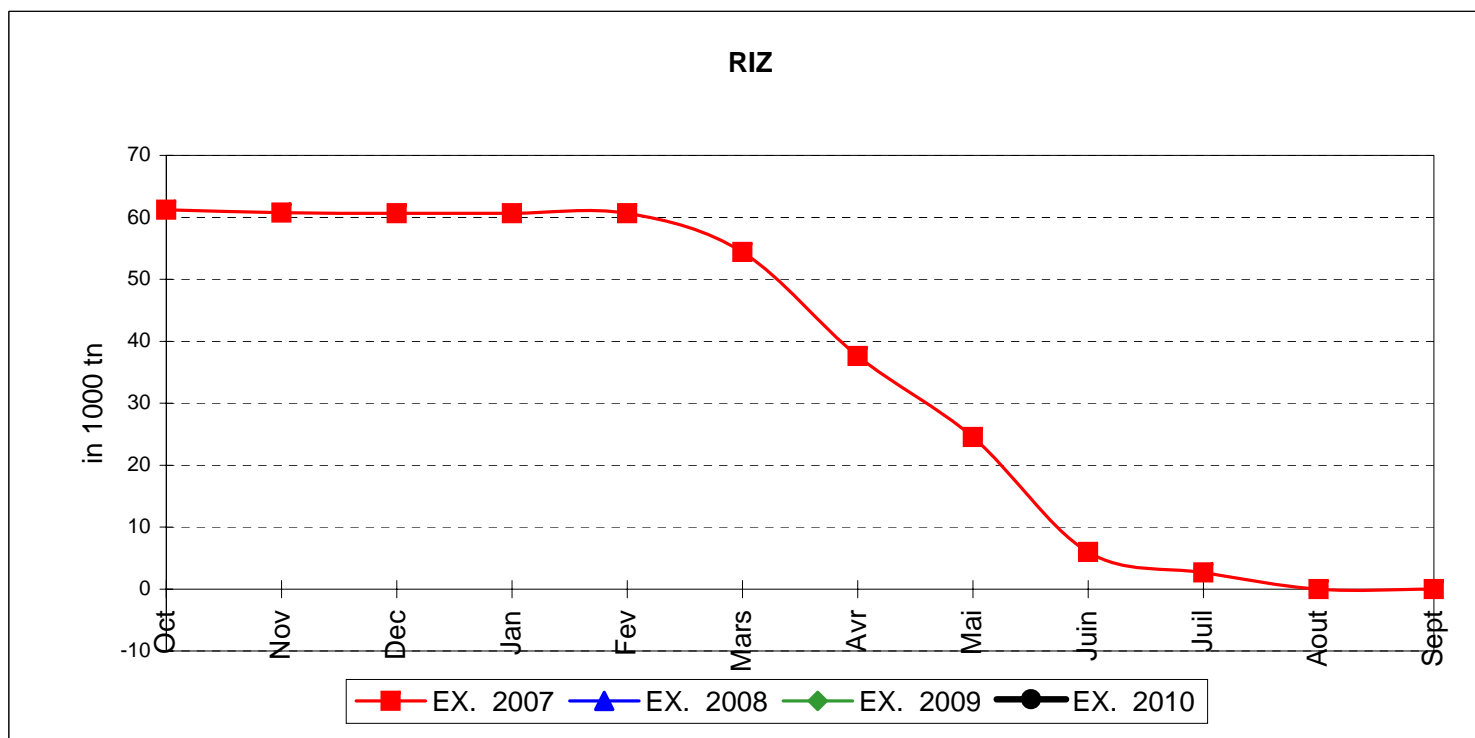
MAIS



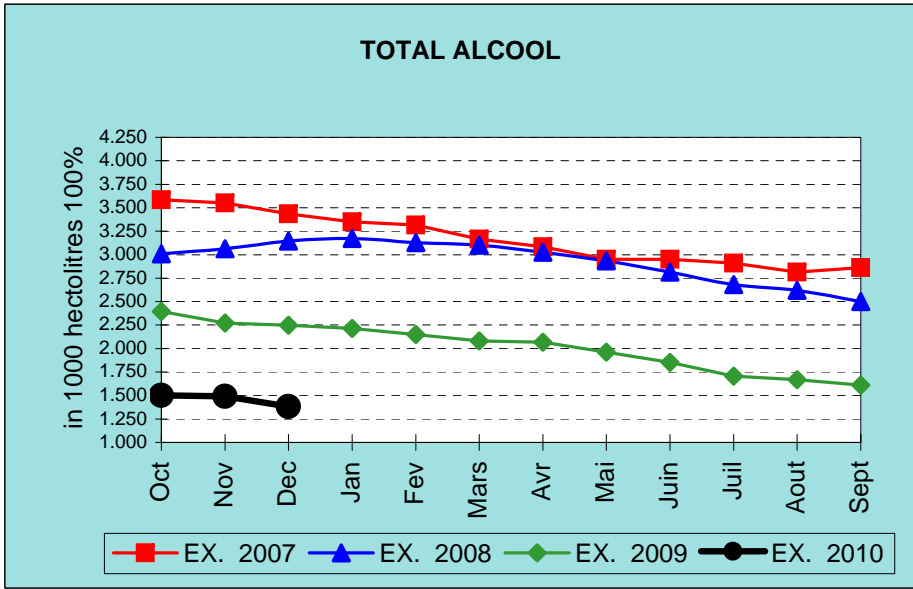
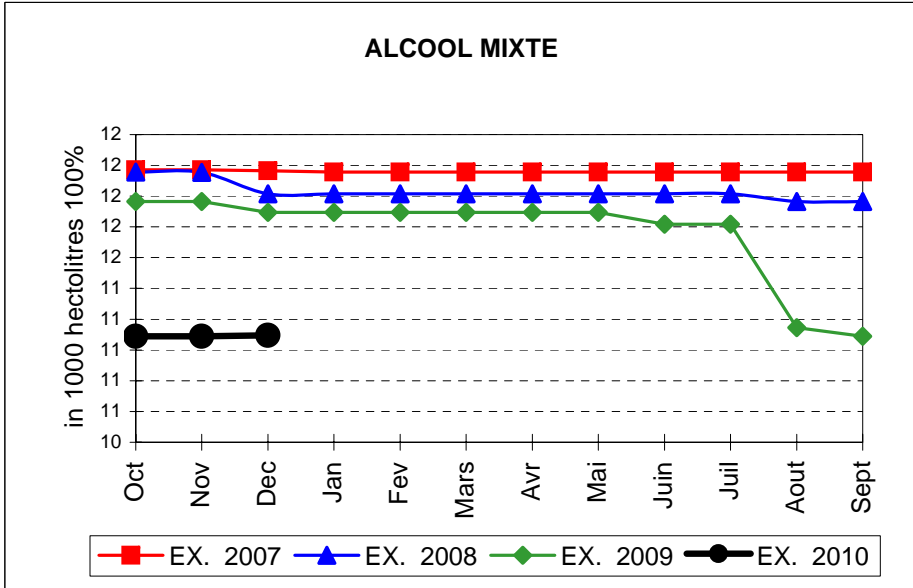
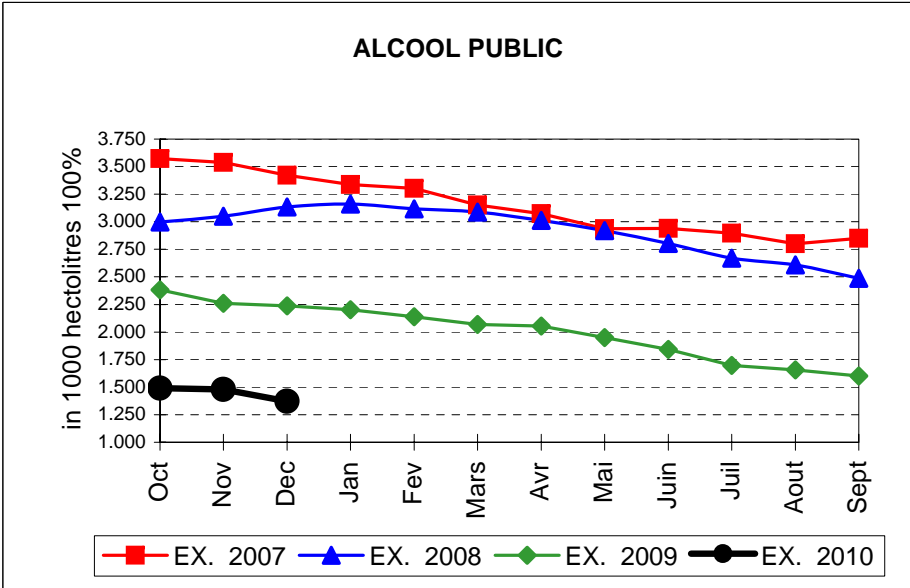
TOTAL CEREALES



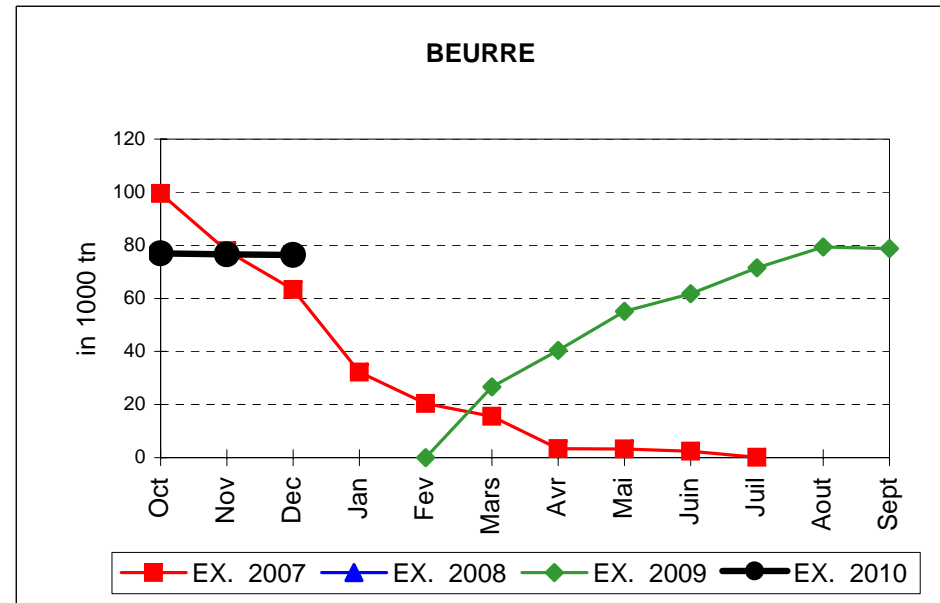
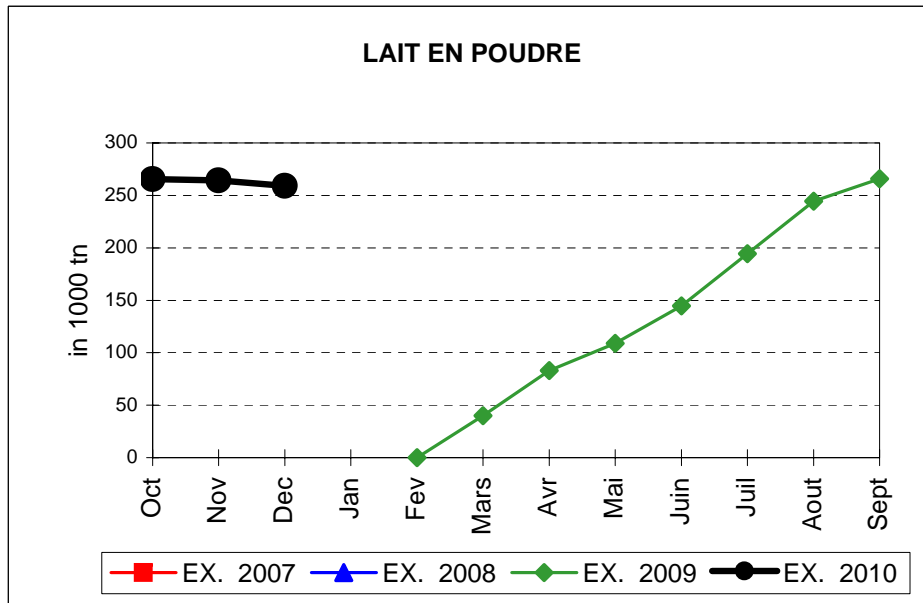
EVOLUTION IN QUANTITIES OF PUBLIC INTERVENTION STOCKS



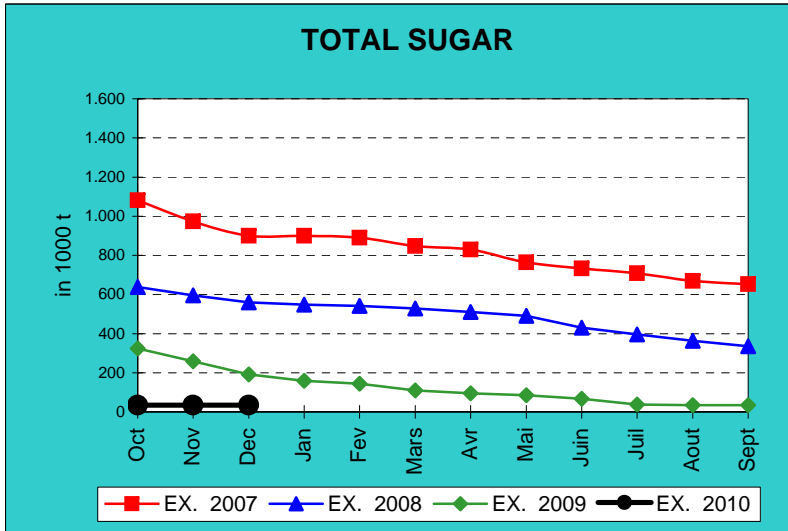
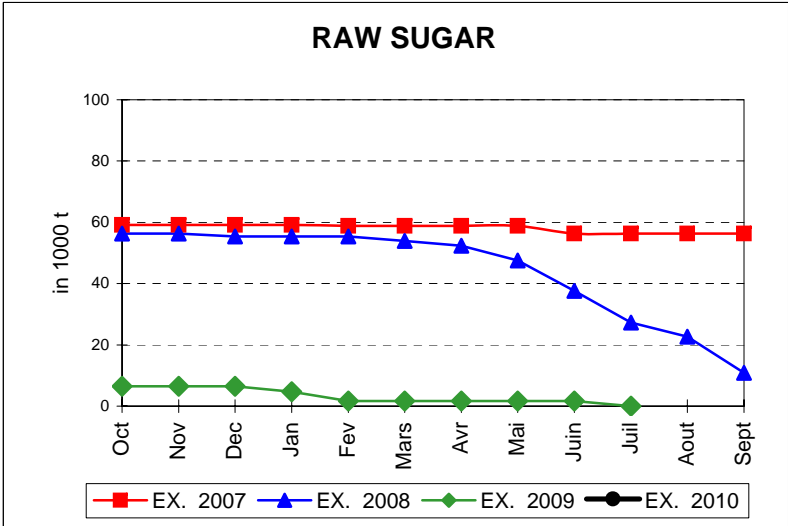
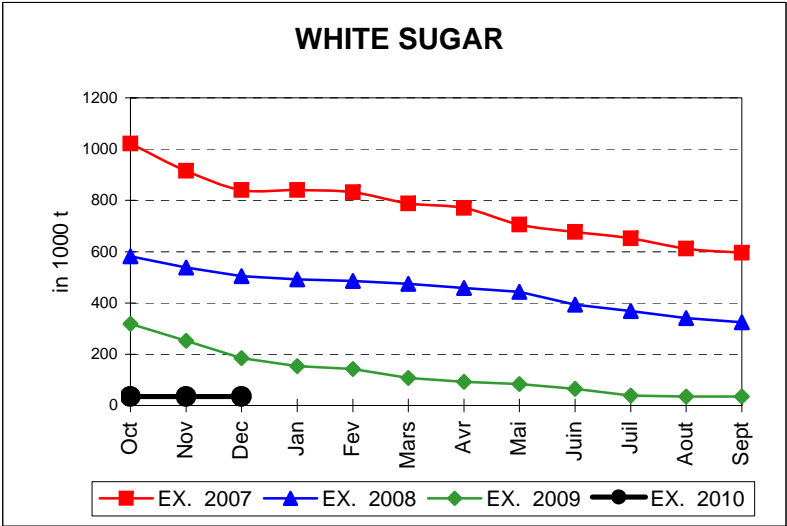
EVOLUTION IN QUANTITIES OF PUBLIC INTERVENTION STOCKS



EVOLUTION IN QUANTITIES OF PUBLIC INTERVENTION STOCKS

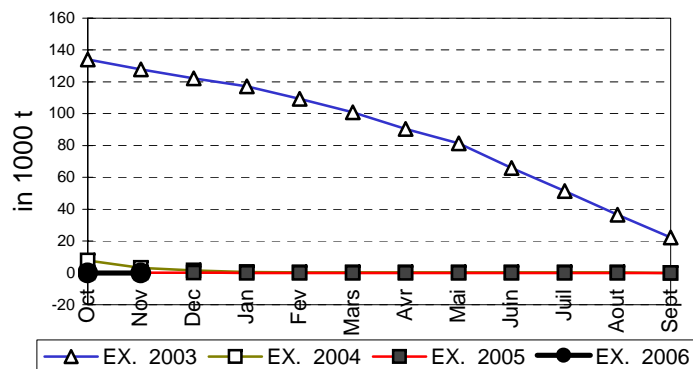


EVOLUTION IN QUANTITIES OF PUBLIC INTERVENTION STOCKS

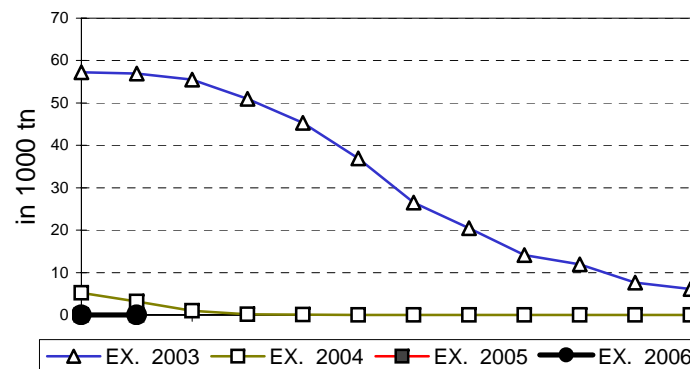


EVOLUTION IN QUANTITIES OF PUBLIC INTERVENTION STOCKS

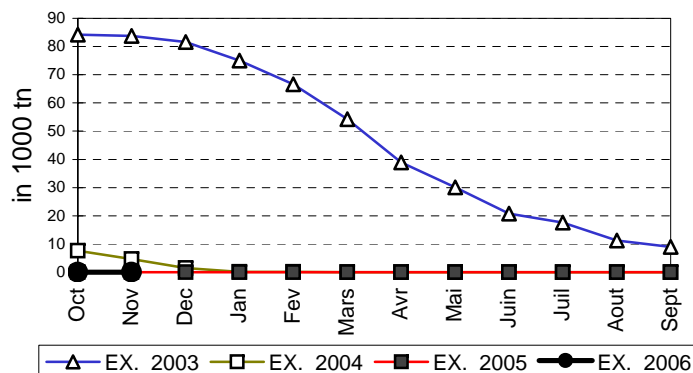
VIANDE BOVINE CARCASSES



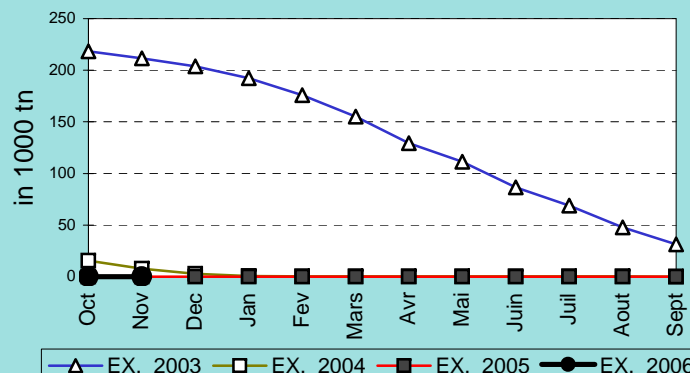
VIANDE BOVINE DESOSSEE



VIANDE DESOSSEE EN EQUIVALENT CARCASSES



TOTAL VIANDE EN EQUIVALENT CARCASSES



COMPARED WITH PREVIOUS MONTH

EU TOTAL	31-dic-09		30-nov-09		CHANGE IN QTY		CHANGE IN VALUE	
	QUANTITY (tn or hl)	VALUE (in Euro)	QUANTITY (tn or hl)	VALUE (In Euro)	ABSOLUTE (tn or hl)	%	ABSOLUTE (in Euro)	%
CLICK TOTALS FOR GRAPHICS	(a)	(b)	(c)	(d)	(e)=(a)-(c)	(f)=(e)/(c)*%	(g)=(b)-(d)	(h)=(g)/(d)*%
Blé panifiable	104.711	10.819.115	85.094	8.786.891	19.618	23%	2.032.224	23%
Orge	2.072.302	208.721.218	1.484.231	150.051.305	588.070	40%	58.669.913	39%
Seigle								
Sorgho	501	50.792	501	50.792				
Mais	554.150	56.310.971	556.092	56.507.629	-1.941	0%	-196.659	0%
TOTAL CEREALES	2.731.665	275.902.095	2.125.918	215.396.616	605.747	28%	60.505.479	28%
TOTAL RIZ								
Alcool Public	1.372.174	50.886.261	1.478.534	54.820.049	-106.360	-7%	-3.933.788	-7%
Alcool Mixte	11.095	180.908	11.088	180.880	7	0%	29	0%
TOTAL ALCOOL (HL 100%)	1.383.269	51.067.169	1.489.622	55.000.929	-106.353	-7%	-3.933.760	-7%
LEP	259.096	386.581.635	264.347	394.429.941	-5.251	-2%	-7.848.306	-2%
Beurre	76.353	166.308.737	76.556	166.750.056	-203	0%	-441.319	0%
TOTAL LAIT ET BEURRE	335.449	552.890.373	340.903	561.179.997	-5.454	-2%	-8.289.625	-1%
Sucre blanc	34.830	11.227.656	34.830	11.227.656				
Sucre brut								
TOTAL SUCRE	34.830	11.227.656	34.830	11.227.656				
Bov. carc.								
Bov. des.								
Eq. carc.								
TOTAL EQ. CARCASSES								
GRAND TOTAL		891.087.293		842.805.199			48.282.094	6%

SOURCE :

The declarations of the Member States before controls.

COMPARED WITH PREVIOUS YEAR

EU TOTAL	31-dic-09		31-dic-08		CHANGE IN QTY		CHANGE IN VALUE	
	QUANTITY (tn or hl)	VALUE (in Euro)	QUANTITY (tn or hl)	VALUE (In Euro)	ABSOLUTE (tn or hl)	%	ABSOLUTE (in Euro)	%
CLICK TOTALS FOR GRAPHICS	(a)	(b)	(c)	(d)	(e)=(a)-(c)	(f)=(e)/(c)*%	(g)=(b)-(d)	(h)=(g)/(d)*%
Blé panifiable	104.711	10.819.115	37	3.302	104.675	285140%	10.815.813	327547%
Orge	2.072.302	208.721.218	12.885	1.340.970	2.059.417	15983%	207.380.248	15465%
Seigle								
Sorgho	501	50.792			501		50.792	
Mais	554.150	56.310.971	22.842	2.242.849	531.308	2326%	54.068.122	2411%
TOTAL CEREALES	2.731.665	275.902.095	35.764	3.587.122	2.695.902	7538%	272.314.973	7591%
TOTAL RIZ								
Alcool Public	1.372.174	50.886.261	2.237.531	95.441.203	-865.357	-39%	-44.554.942	-47%
Alcool Mixte	11.095	180.908	11.894	184.533	-799	-7%	-3.626	-2%
TOTAL ALCOOL (HL 100%)	1.383.269	51.067.169	2.249.425	95.625.737	-866.156	-39%	-44.558.568	-47%
LEP	259.096	386.581.635			259.096		386.581.635	
Beurre	76.353	166.308.737			76.353		166.308.737	
TOTAL LAIT ET BEURRE	335.449	552.890.373			335.449		552.890.373	
Sucre blanc	34.830	11.227.656	185.222	61.525.943	-150.391	-81%	-50.298.287	-82%
Sucre brut			6.444	1.558.098	-6.444	-100%	-1.558.098	-100%
TOTAL SUCRE	34.830	11.227.656	191.666	63.084.041	-156.836	-82%	-51.856.385	-82%
Bov. carc.								
Bov. des.								
Eq. carc.								
TOTAL EQ. CARCASSES								
GRAND TOTAL		891.087.293		162.296.900			728.790.393	449%

SOURCE :

The declarations of the Member States before controls.

THE PUBLIC STORAGE FLASH REPORT AS AT

31-dic-09

ESPAÑA		YEAR-TO-DATE		OPENING BALANCE		CHANGE IN QTY		CHANGE IN VALUE	
PRODUCTS	QUANTITY (in tonnes or hl)	VALUE (in Euro)	QUANTITY (in tonnes or hl)	VALUE (in Euro)	ABSOLUTE (in tonnes or hl)	%	ABSOLUTE (in Euro)	%	
	(a)	(b)	(c)	(d)	(e)=(a)-(c)	(f)=(e)/(c)*%	(g)=(b)-(d)	(h)=(g)/(d)*%	
Ble panifiable									
Orge									
Seigle									
Sorgho									
Mais									
TOTAL CEREALES									
RIZ									
Alcool Public	549.013	20.434.263	574.043	21.365.391	-25.030	-4%	-931.128	-4%	
Alcool Mixte									
TOT. ALCOOL (HL)	549.013	20.434.263	574.043	21.365.391	-25.030	-4%	-931.128	-4%	
LEP	1.382	2.105.975	1.603	2.442.752	-221	-14%	-336.777	-14%	
Beurre	9.336	20.338.943	9.335	20.336.778	1	0%	2.165	0%	
TOTAL L & B	10.718	22.444.917	10.938	22.779.530	-220	-2%	-334.612	-1%	
Sucre Blanc									
Sucre Brut									
TOTAL SUCRE									
Bov. carc.									
Bov. des.									
Eq. carc.									
TOTAL EQ. CARC.									
GRAND TOTAL		42.879.180		44.144.921			-1.265.740	-3%	

31-dic-09

