

CHOOSE COUNTRY

EU TOTAL	YEAR-TO-DATE		OPENING BALANCE (1)		CHANGE IN QTY		CHANGE IN VALUE	
	QUANTITY (tn or hl)	VALUE (in Euro)	QUANTITY (tn or hl)	VALUE (in Euro)	ABSOLUTE (tn or hl)	%	ABSOLUTE (in Euro)	%
CLICK TOTALS FOR GRAPHICS	(a)	(b)	(c)	(d)	(e)=(a)-(c)	(f)=(e)/(c)*%	(g)=(b)-(d)	(h)=(g)/(d)*%
Blé panifiable	201.805	20.409.382	234.577	23.710.769	-32.772	-14%	-3.301.386	-14%
Orge	5.150.531	522.760.194	5.326.162	540.451.972	-175.631	-3%	-17.691.778	-3%
Seigle								
Sorgho								
Mais	0	0	3.142	318.234	-3.141	-100%	-318.234	-100%
TOTAL CEREALES	5.352.336	543.169.577	5.563.880	564.480.975	-211.544	-4%	-21.311.398	-4%
TOTAL RIZ								
Alcool Public	440.172	14.967.320	628.630	21.369.957	-188.458	-30%	-6.402.637	-30%
Alcool Mixte			1.173	4.645	-1.173	-100%	-4.645	-100%
TOTAL ALCOOL (HL 100%)	440.172	14.967.320	629.803	21.374.602	-189.631	-30%	-6.407.282	-30%
LEP	194.803	290.529.260	197.223	294.161.988	-2.420	-1%	-3.632.728	-1%
Beurre	1.544	3.341.537	1.545	3.343.770	-1	0%	-2.233	0%
TOTAL LAIT ET BEURRE	196.348	293.870.797	198.769	297.505.758	-2.421	-1%	-3.634.961	-1%
Sucre Blanc	9	3.052	9	3.052				
Sucre Brut								
TOTAL SUCRE	9	3.052	9	3.052				
Bov. carc.								
Bov. des.								
Eq. carc.								
TOTAL EQ. CARCASSES								
GRAND TOTAL		852.010.745		883.364.387			-31.353.641	-4%

SOURCE : The declarations of the Member States before controls.

(1) Period 13/2010 annual declaration

quantities are expressed in
tonnes (alcohol in hl 100%)

ACCOUNTING VALUE OF THE PUBLIC INTERVENTION STOCKS AS AT :
(BEFORE THE COMPLEMENTARY DEPRECIATION)

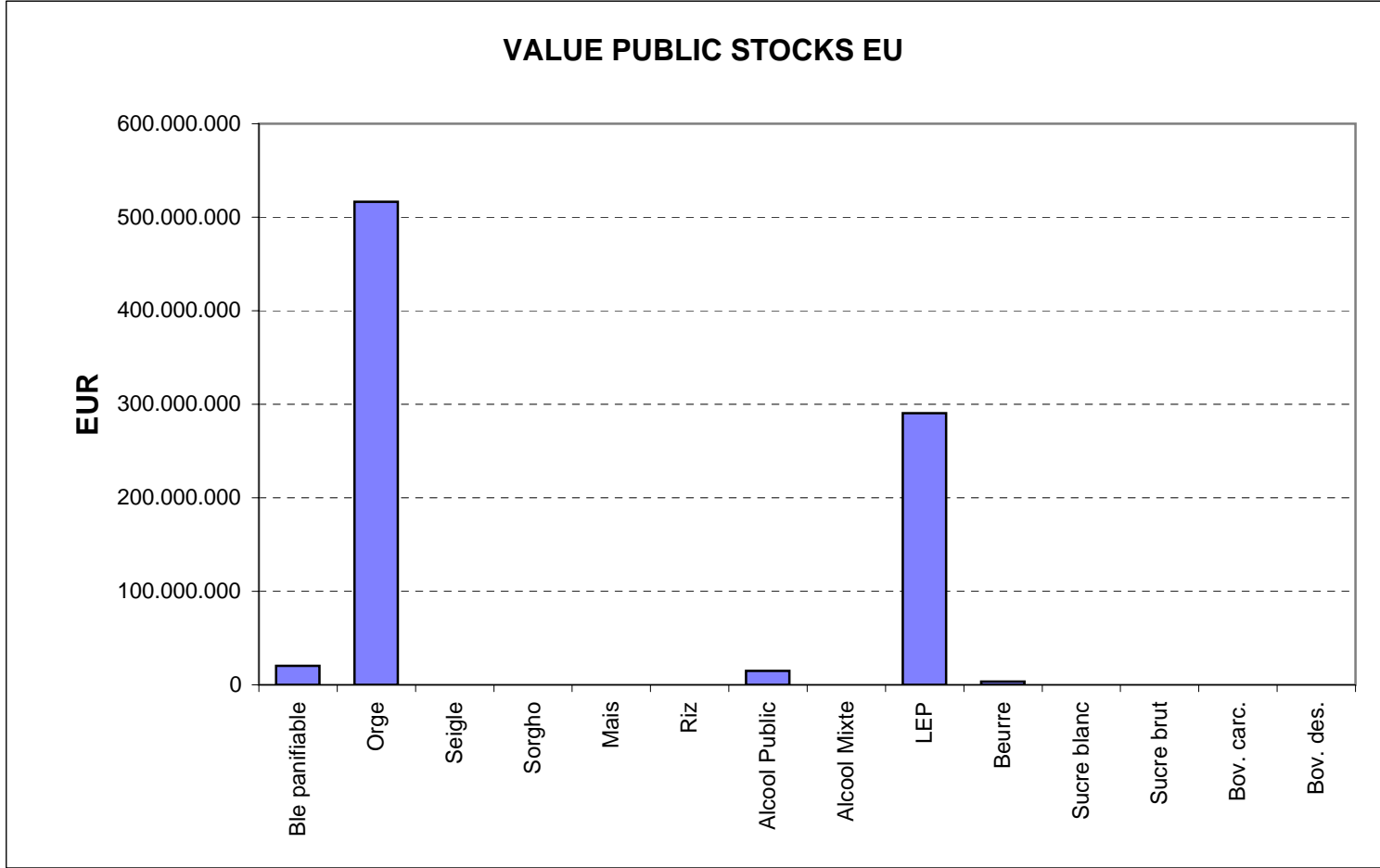
31-dic-10

AGRI I.4

J. FLORET tel. 53236

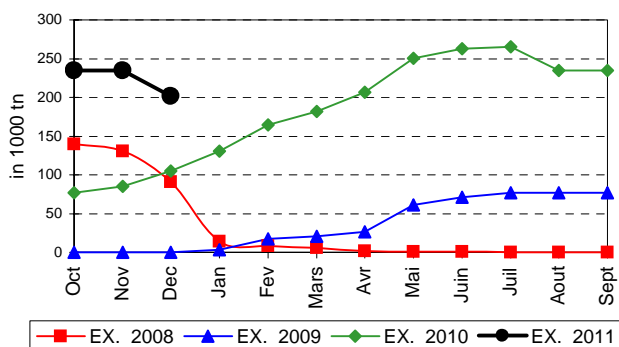
Produits		BE	BG	CZ	DK	DE	EE	IE	EL	ES	FR	IT	CY	LV	LT	LU	HU	MT	NL	OS	PL	PO	RO	SI	SK	FIN	SE	UK	TOTAL
BLE PANIF	quant.		3.587	41.367											91	114.583				619					27.059	14.500			201.805
	valeur		355.892	4.188.823											8.867	11.607.227					62.615					2.747.318	1.438.641		
ORGE	quant.	34.951	42.101	282.466	59.583	1.575.064	71.308				928.910			22.993	117.962		299.046		30.349	365.267			61.433	143.362	822.276	144.361	149.099	5.150.531	
	valeur	3.548.585	4.348.146	29.786.035	6.069.142	158.293.895	7.229.945				94.544.491			2.317.023	11.883.488		30.502.725		3.081.285	36.829.866			6.273.544	14.592.847	84.003.677	14.688.751	14.766.749	522.760.194	
SEIGLE	quant.																												
SORGHO	quant.																												
MAIS	quant.																0												0
	valeur																0												0
TOT.CER	quant.	34.951	45.687	323.833	59.583	1.575.064	71.308				928.910			22.993	118.053		413.629		30.349	365.886			61.433	170.421	836.775	144.361	149.099	5.352.336	
RIZ	quant.																												
ALC.P.	quant.								60.182	246.117			7.112				54.757				72.006								440.172
	valeur								2.046.174	8.370.428			241.520				1.861.725				2.447.473								14.967.320
ALC.M.	quant.																												
TOT.ALC.	quant.								60.182	246.117			7.112				54.757				72.006								440.172
	valeur																												
LEP	quant.	24.122		2.946		63.463	1.665	32.170			23.888				4.632				17.447		2.597	607				1.052	3.614	16.600	194.803
	valeur	35.720.879		4.641.050		94.426.449	2.382.081	48.058.217			35.791.212				6.941.917				26.082.891		3.850.494	909.158				1.575.738	5.411.965	24.737.208	290.529.260
BEURRE	quant.						182								1.363														1.544
	valeur						371.083								2.970.454														3.341.537
TOT L&B	quant.	24.122		2.946		63.463	1.847	32.170			23.888				5.994				17.447		2.597	607				1.052	3.614	16.600	196.348
S. BLANC	quant.			9																									9
	valeur			3.052																									3.052
S. BRUT	quant.																												
TOT. SUC	quant.			9																									9
BOV.QUA	quant.																												
BOV.DES	quant.																												
EQ. CARC	quant.																												
TOT EQ	quant.																												
EU TOTAL	valeur	39.269.464	4.704.038	38.618.960	6.069.142	252.720.344	9.983.109	48.058.217	2.046.174	8.370.428	130.335.703		241.520	2.317.023	21.804.727	43.971.677		26.082.891	3.081.285	40.742.974	3.356.631	6.273.544	17.340.165	6.273.544	17.340.165	87.018.056	20.100.716	39.503.957	852.010.745

PUBLIC INTERVENTION STOCKS

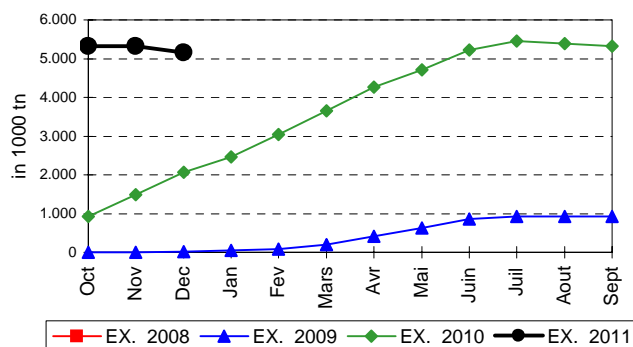


EVOLUTION IN QUANTITIES OF PUBLIC INTERVENTION STOCKS

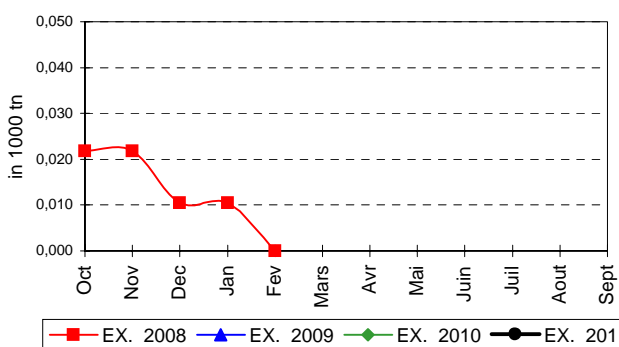
BLE TENDRE PANIFIABLE



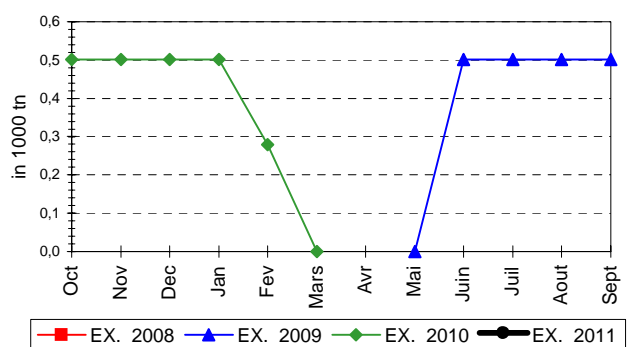
ORGE



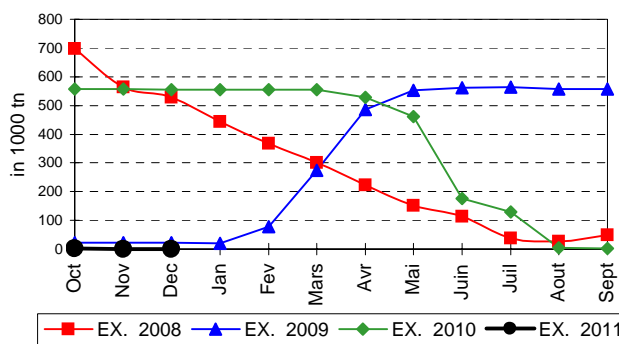
SEIGLE



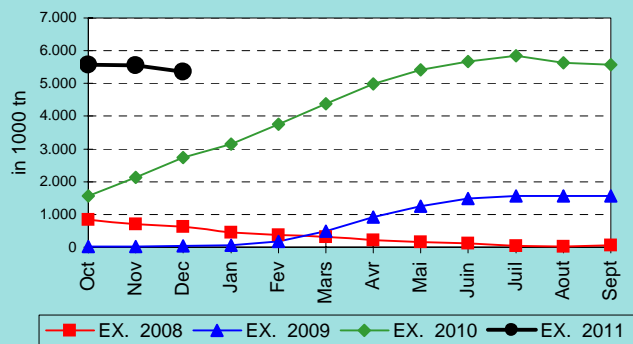
SORGHO



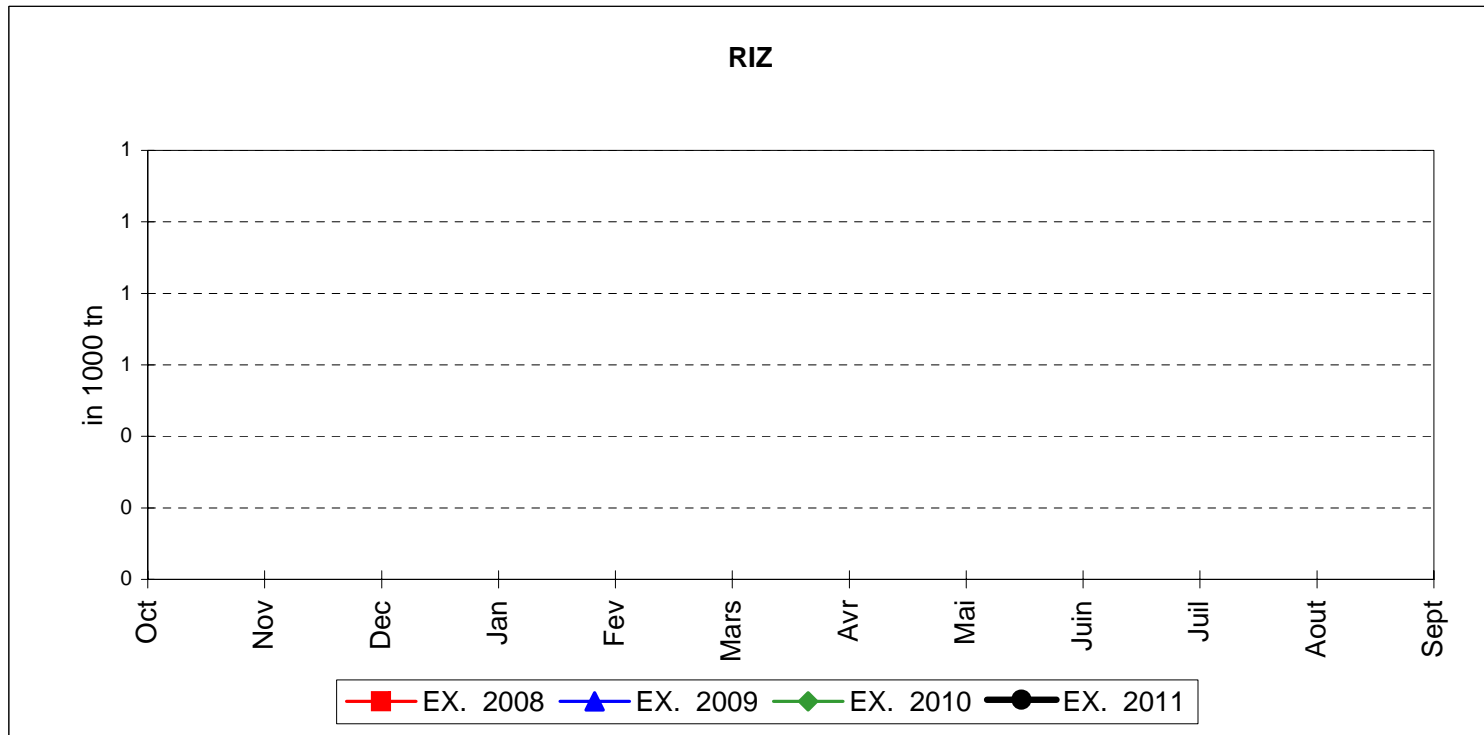
MAIS



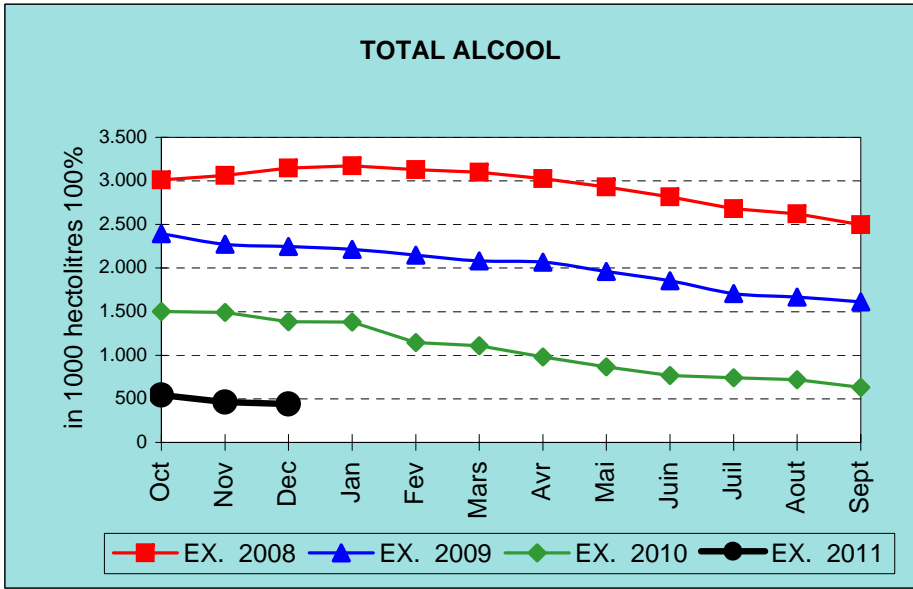
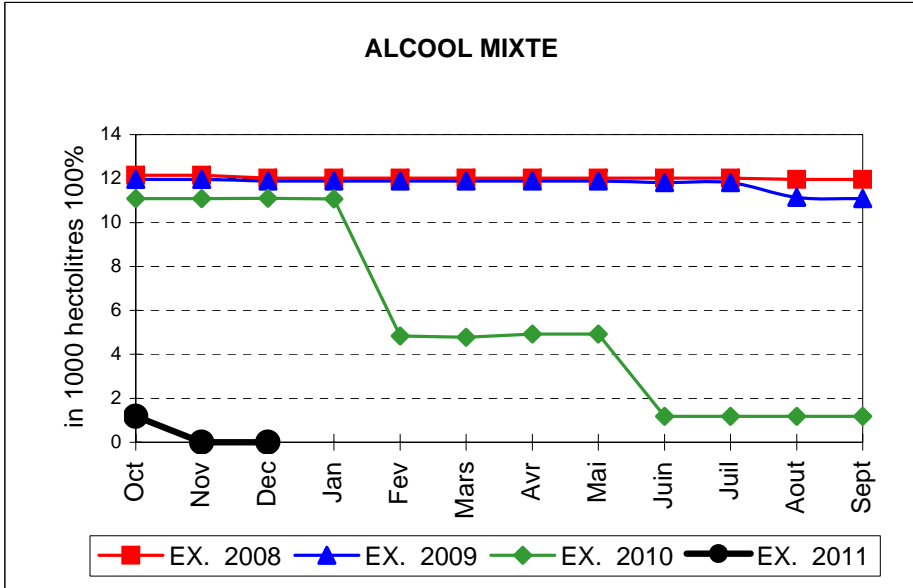
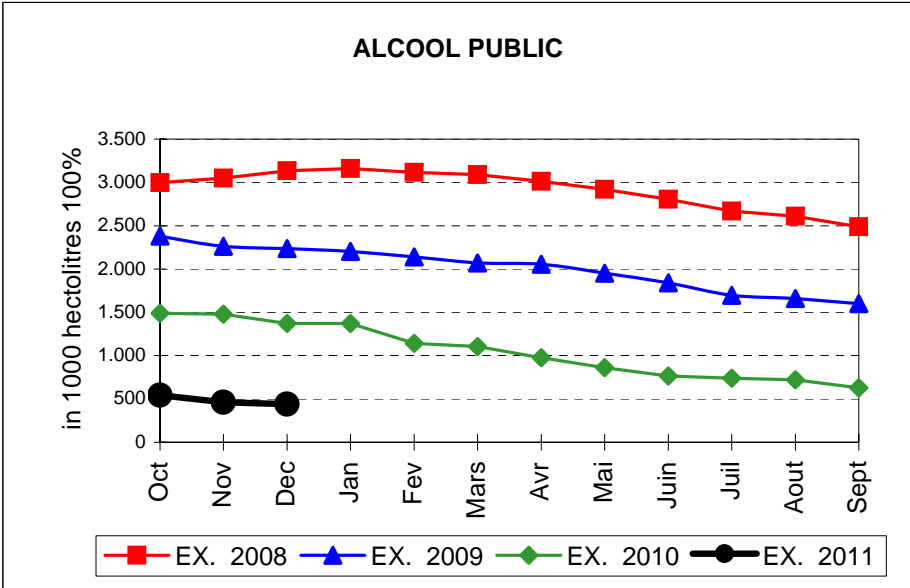
TOTAL CEREALES



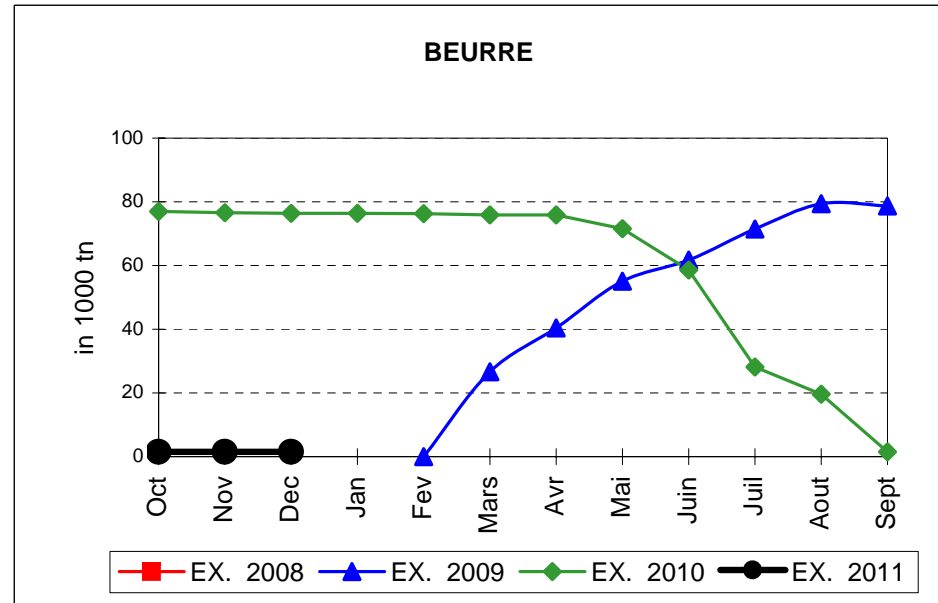
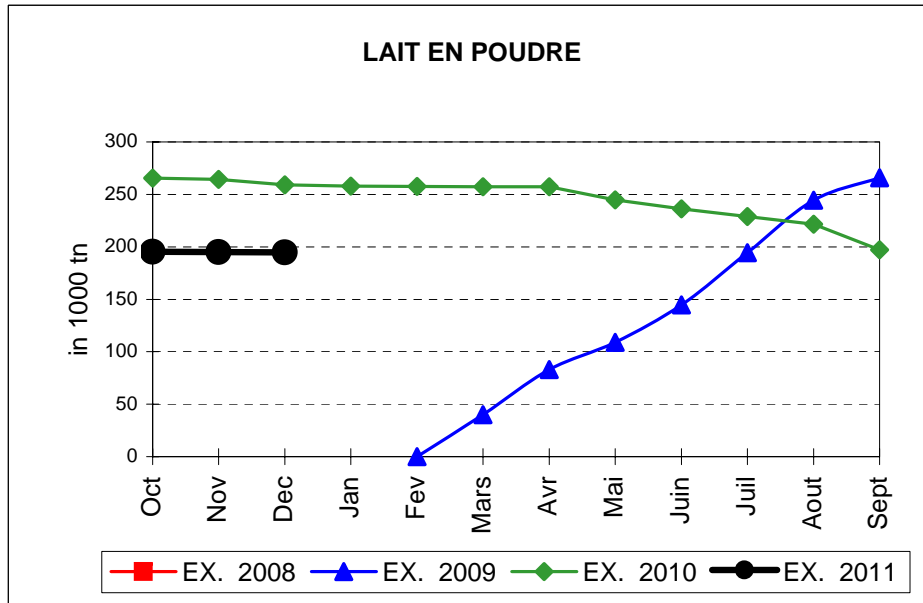
EVOLUTION IN QUANTITIES OF PUBLIC INTERVENTION STOCKS



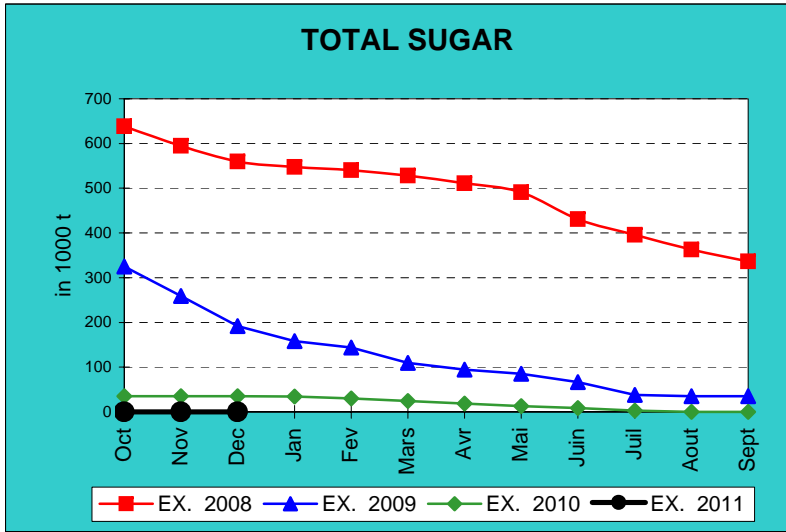
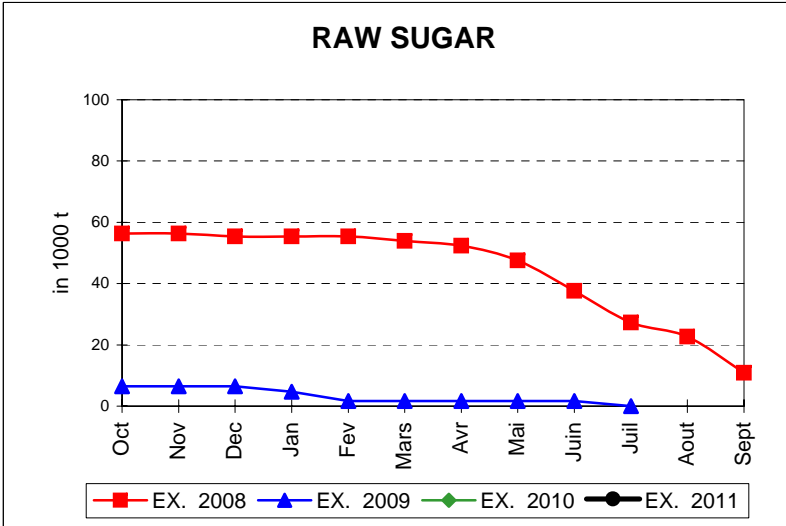
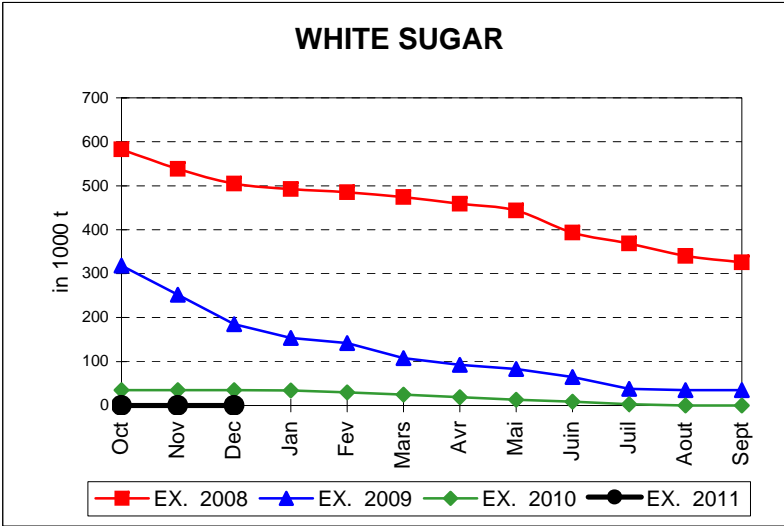
EVOLUTION IN QUANTITIES OF PUBLIC INTERVENTION STOCKS



EVOLUTION IN QUANTITIES OF PUBLIC INTERVENTION STOCKS

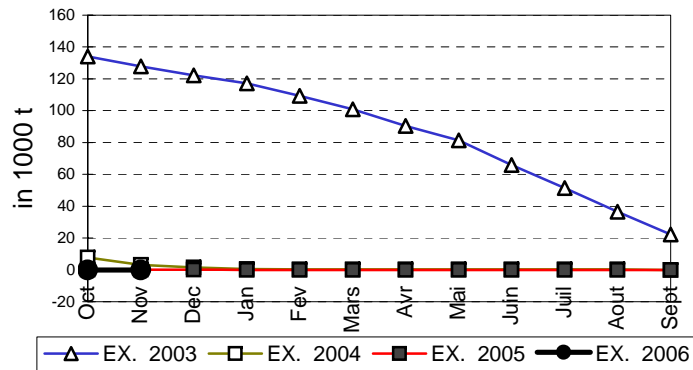


EVOLUTION IN QUANTITIES OF PUBLIC INTERVENTION STOCKS

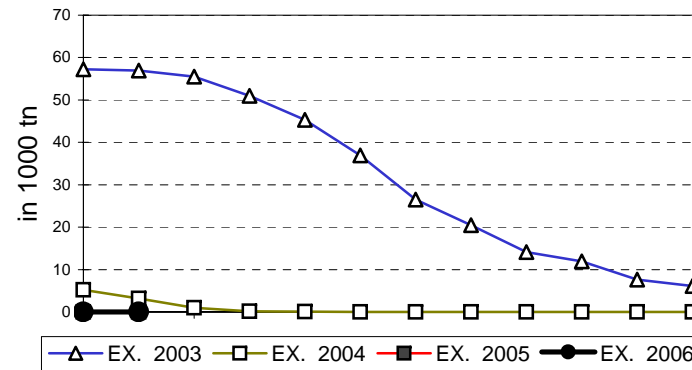


EVOLUTION IN QUANTITIES OF PUBLIC INTERVENTION STOCKS

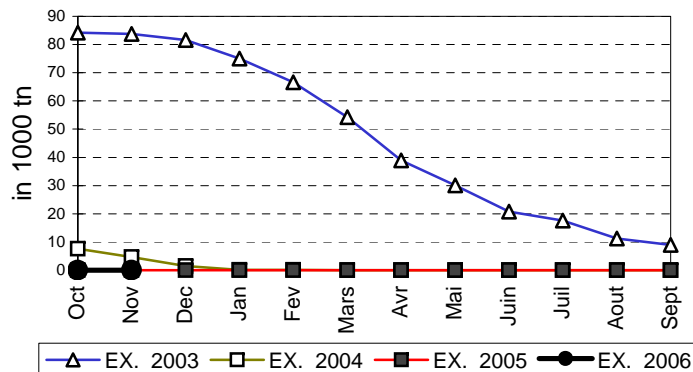
VIANDE BOVINE CARCASSES



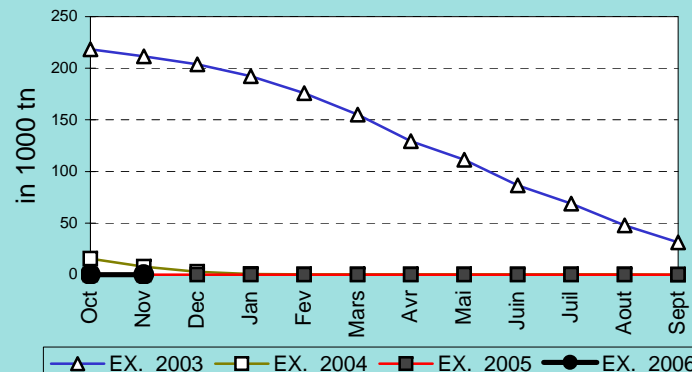
VIANDE BOVINE DESOSSEE



VIANDE DESOSSEE EN EQUIVALENT CARCASSES



TOTAL VIANDE EN EQUIVALENT CARCASSES



COMPARED WITH PREVIOUS MONTH

EU TOTAL	31-dic-10		30-nov-10		CHANGE IN QTY		CHANGE IN VALUE	
	QUANTITY (tn or hl)	VALUE (in Euro)	QUANTITY (tn or hl)	VALUE (In Euro)	ABSOLUTE (tn or hl)	%	ABSOLUTE (in Euro)	%
CLICK TOTALS FOR GRAPHICS	(a)	(b)	(c)	(d)	(e)=(a)-(c)	(f)=(e)/(c)*%	(g)=(b)-(d)	(h)=(g)/(d)*%
Blé panifiable	201.805	20.409.382	234.577	23.710.941	-32.772	-14%	-3.301.559	-14%
Orge	5.150.531	522.760.194	5.326.155	540.451.267	-175.624	-3%	-17.691.073	-3%
Seigle								
Sorgho								
Mais	0	0	671	67.950	-671	-100%	-67.950	-100%
TOTAL CEREALES	5.352.336	543.169.577	5.561.403	564.230.159	-209.067	-4%	-21.060.582	-4%
TOTAL RIZ								
Alcool Public	440.172	14.967.320	462.423	15.723.176	-22.250	-5%	-755.856	-5%
Alcool Mixte			2	10	-2	-100%	-10	-100%
TOTAL ALCOOL (HL 100%)	440.172	14.967.320	462.425	15.723.186	-22.253	-5%	-755.865	-5%
LEP	194.803	290.529.260	195.157	291.058.002	-354	0%	-528.743	0%
Beurre	1.544	3.341.537	1.544	3.341.537				
TOTAL LAIT ET BEURRE	196.348	293.870.797	196.701	294.399.539	-354	0%	-528.743	0%
Sucre blanc	9	3.052	9	3.052				
Sucre brut								
TOTAL SUCRE	9	3.052	9	3.052				
Bov. carc.								
Bov. des.								
Eq. carc.								
TOTAL EQ. CARCASSES								
GRAND TOTAL		852.010.745		874.355.935			-22.345.190	-3%

SOURCE : The declarations of the Member States before controls.

COMPARED WITH PREVIOUS YEAR

EU TOTAL	31-dic-10		31-dic-09		CHANGE IN QTY		CHANGE IN VALUE	
	QUANTITY (tn or hl)	VALUE (in Euro)	QUANTITY (tn or hl)	VALUE (In Euro)	ABSOLUTE (tn or hl)	%	ABSOLUTE (in Euro)	%
CLICK TOTALS FOR GRAPHICS	(a)	(b)	(c)	(d)	(e)=(a)-(c)	(f)=(e)/(c)*%	(g)=(b)-(d)	(h)=(g)/(d)*%
Blé panifiable	201.805	20.409.382	104.711	10.819.115	97.093	93%	9.590.268	89%
Orge	5.150.531	522.760.194	2.072.302	208.721.218	3.078.229	149%	314.038.976	150%
Seigle								
Sorgho			501	50.792	-501	-100%	-50.792	-100%
Mais	0	0	554.150	56.310.971	-554.150	-100%	-56.310.970	-100%
TOTAL CEREALES	5.352.336	543.169.577	2.731.665	275.902.095	2.620.671	96%	267.267.482	97%
TOTAL RIZ								
Alcool Public	440.172	14.967.320	1.372.174	50.886.261	-932.001	-68%	-35.918.941	-71%
Alcool Mixte			11.095	180.908	-11.095	-100%	-180.908	-100%
TOTAL ALCOOL (HL 100%)	440.172	14.967.320	1.383.269	51.067.169	-943.097	-68%	-36.099.849	-71%
LEP	194.803	290.529.260	259.096	386.581.635	-64.293	-25%	-96.052.376	-25%
Beurre	1.544	3.341.537	76.353	166.308.737	-74.809	-98%	-162.967.200	-98%
TOTAL LAIT ET BEURRE	196.346	293.870.797	335.449	552.890.373	-139.101	-41%	-259.019.576	-47%
Sucre blanc	9	3.052	34.830	11.227.656	-34.821	-100%	-11.224.604	-100%
Sucre brut								
TOTAL SUCRE	9	3.052	34.830	11.227.656	-34.821	-100%	-11.224.604	-100%
Bov. carc.								
Bov. des.								
Eq. carc.								
TOTAL EQ. CARCASSES								
GRAND TOTAL		852.010.745		891.087.293			-39.076.547	-4%

SOURCE :

The declarations of the Member States before controls.

THE PUBLIC STORAGE FLASH REPORT AS AT										31-dic-10
ESPAÑA										
PRODUCTS	YEAR-TO-DATE		OPENING BALANCE		CHANGE IN QTY		CHANGE IN VALUE			
	QUANTITY (in tonnes or hl)	VALUE (in Euro)	QUANTITY (in tonnes or hl)	VALUE (in Euro)	ABSOLUTE (in tonnes or hl)	%	ABSOLUTE (in Euro)	%		
	(a)	(b)	(c)	(d)	(e)=(a)-(c)	(f)=(e)/(c)*%	(g)=(b)-(d)	(h)=(g)/(d)*%		
Ble panifiable										
Orge										
Seigle										
Sorgho										
Mais										
TOTAL CEREALES										
RIZ										
Alcool Public	246.117	8.370.428	373.725	12.711.227	-127.608	-34%	-4.340.799	-34%		
Alcool Mixte										
TOT. ALCOOL (HL)	246.117	8.370.428	373.725	12.711.227	-127.608	-34%	-4.340.799	-34%		
LEP										
Beurre										
TOTAL L & B										
Sucre Blanc										
Sucre Brut										
TOTAL SUCRE										
Bov. carc.										
Bov. des.										
Eq. carc.										
TOTAL EQ. CARC.										
GRAND TOTAL		8.370.428		12.711.227			-4.340.799	-34%		

31-dic-10

