

CHOOSE COUNTRY

EU TOTAL	YEAR-TO-DATE		OPENING BALANCE (1)		CHANGE IN QTY		CHANGE IN VALUE	
	QUANTITY (tn or hl)	VALUE (in Euro)	QUANTITY (tn or hl)	VALUE (in Euro)	ABSOLUTE (tn or hl)	%	ABSOLUTE (in Euro)	%
CLICK TOTALS FOR GRAPHICS	(a)	(b)	(c)	(d)	(e)=(a)-(c)	(f)=(e)/(c)*%	(g)=(b)-(d)	(h)=(g)/(d)*%
Blé panifiable								
Orge	162.584	16.445.976	165.326	16.717.611	-2.743	-2%	-271.636	-2%
Seigle								
Sorgho								
Mais								
<b>TOTAL CEREALES</b>	<b>162.584</b>	<b>16.445.976</b>	<b>165.326</b>	<b>16.717.611</b>	<b>-2.743</b>	<b>-2%</b>	<b>-271.636</b>	<b>-2%</b>
<b>TOTAL RIZ</b>								
Alcool Public	11.702	328.168	55.857	1.566.771	-44.155	-79%	-1.238.603	-79%
Alcool Mixte								
<b>TOTAL ALCOOL (HL 100%)</b>	<b>11.702</b>	<b>328.168</b>	<b>55.857</b>	<b>1.566.771</b>	<b>-44.155</b>	<b>-79%</b>	<b>-1.238.603</b>	<b>-79%</b>
LEP	49.522	73.812.976	53.556	79.832.007	-4.034	-8%	-6.019.031	-8%
Beurre	1	2.922	1	2.922				
<b>TOTAL LAIT ET BEURRE</b>	<b>49.524</b>	<b>73.815.899</b>	<b>53.558</b>	<b>79.834.930</b>	<b>-4.034</b>	<b>-8%</b>	<b>-6.019.031</b>	<b>-8%</b>
Sucre Blanc								
Sucre Brut								
<b>TOTAL SUCRE</b>								
Bov. carc.								
Bov. des.								
Eq. carc.								
<b>TOTAL EQ. CARCASSES</b>								
<b>GRAND TOTAL</b>		<b>90.590.042</b>		<b>98.119.313</b>			<b>-7.529.270</b>	<b>-8%</b>

SOURCE : The declarations of the Member States before controls.

(1) Period 13/2011 annual declaration

quantities are expressed in  
tonnes (alcohol in hl 100%)

ACCOUNTING VALUE OF THE PUBLIC INTERVENTION STOCKS AS AT :  
(BEFORE THE COMPLEMENTARY DEPRECIATION)

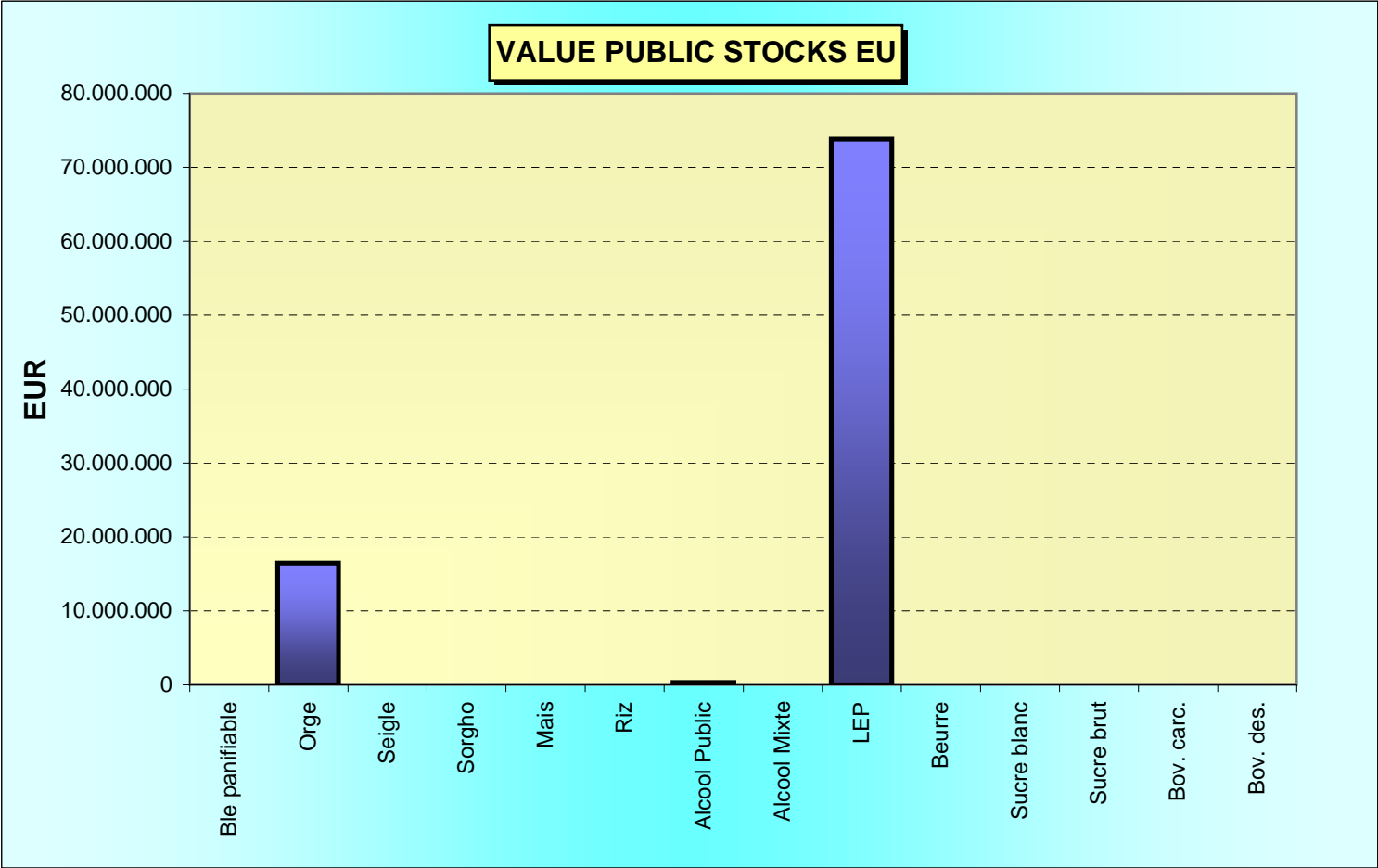
31-dic-11

AGRI I.4

G. MERTENS tel. 65910

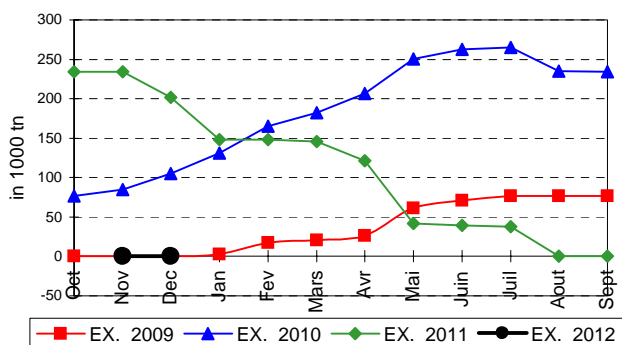
Produits		BE	BG	CZ	DK	DE	EE	IE	EL	ES	FR	IT	CY	LV	LT	LU	HU	MT	NL	OS	PL	PO	RO	SI	SK	FIN	SE	UK	TOTAL	
BLE PANIF	quant.																													
	valeur																													
ORGE	quant.					16.856					396															75.350	64.820	5.161	162.584	
	valeur					1.694.032					40.123															7.633.695	6.566.934	511.191	16.445.976	
SEIGLE	quant.																													
	valeur																													
SORGHO	quant.																													
	valeur																													
MAIS	quant.																													
	valeur																													
TOT.CER	quant.					16.856					396															75.350	64.820	5.161	162.584	
RIZ	quant.																													
	valeur																													
ALC.P.	quant.												7.197				4.505													11.702
	valeur												201.809				126.359													328.168
ALC.M.	quant.																													
	valeur																													
TOT.ALC.	quant.												7.197				4.505												11.702	
LEP	quant.	8.858		330		5.678	635	8.513			5.250				3.361				3.527		1	0					191	13.179	49.522	
	valeur	13.116.777		520.420		8.447.961	908.769	12.717.037			7.865.820				5.037.654				5.272.168		1.223	674					285.723	19.638.750	73.812.976	
BEURRE	quant.						1								1														1	
	valeur						1.124								1.798														2.922	
TOT L&B	quant.	8.858		330		5.678	636	8.513			5.250				3.362				3.527		1	0					191	13.179	49.524	
S. BLANC	quant.																													
	valeur																													
S. BRUT	quant.																													
	valeur																													
TOT. SUC	quant.																													
BOV.QUA	quant.																													
	valeur																													
BOV.DES	quant.																													
	valeur																													
EQ. CARC	quant.																													
	valeur																													
TOT EQ	quant.																													
EU TOTAL	valeur	13.116.777		520.420		10.141.994	909.893	12.717.037			7.905.943		201.809		5.039.452		126.359		5.272.168		1.223	674				7.633.695	6.852.657	20.149.941	90.590.042	

**PUBLIC INTERVENTION STOCKS**

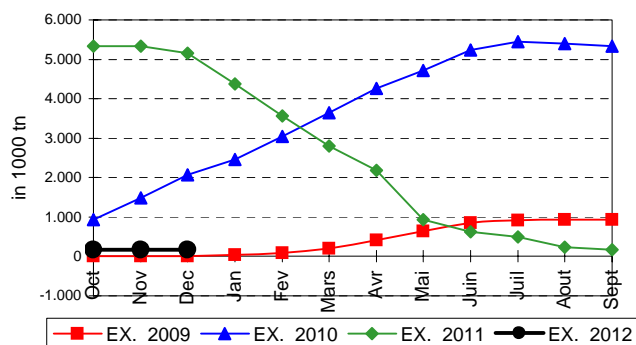


## EVOLUTION IN QUANTITIES OF PUBLIC INTERVENTION STOCKS

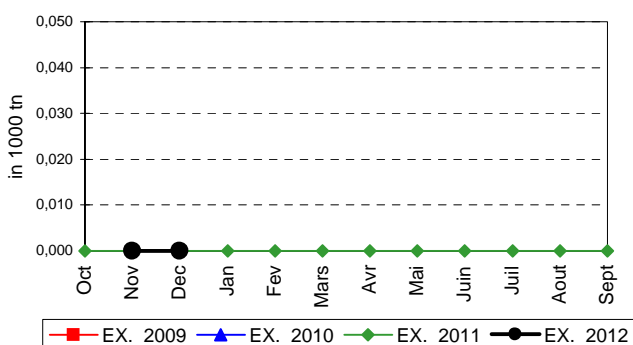
### BLE TENDRE PANIFIABLE



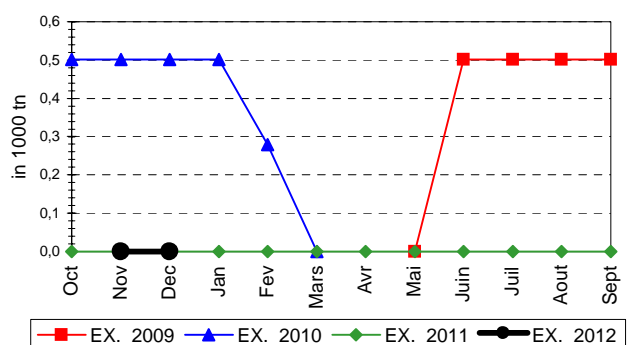
### ORGE



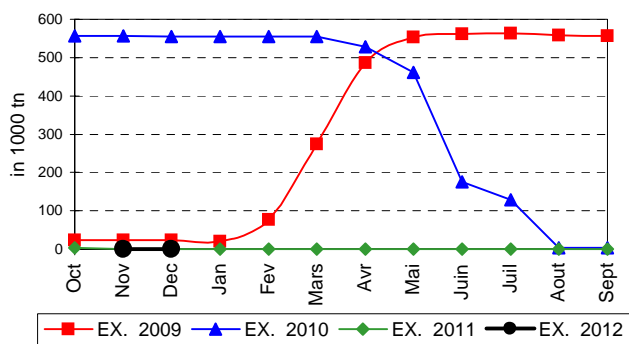
### SEIGLE



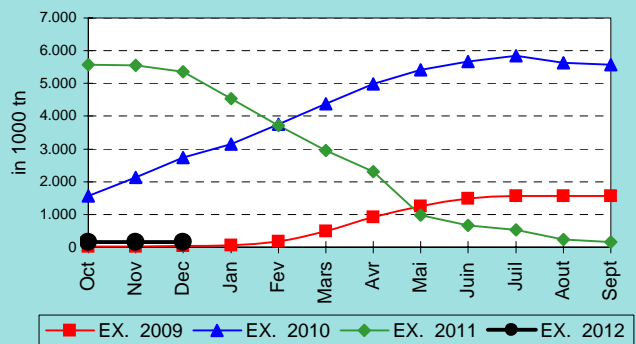
### SORGHO



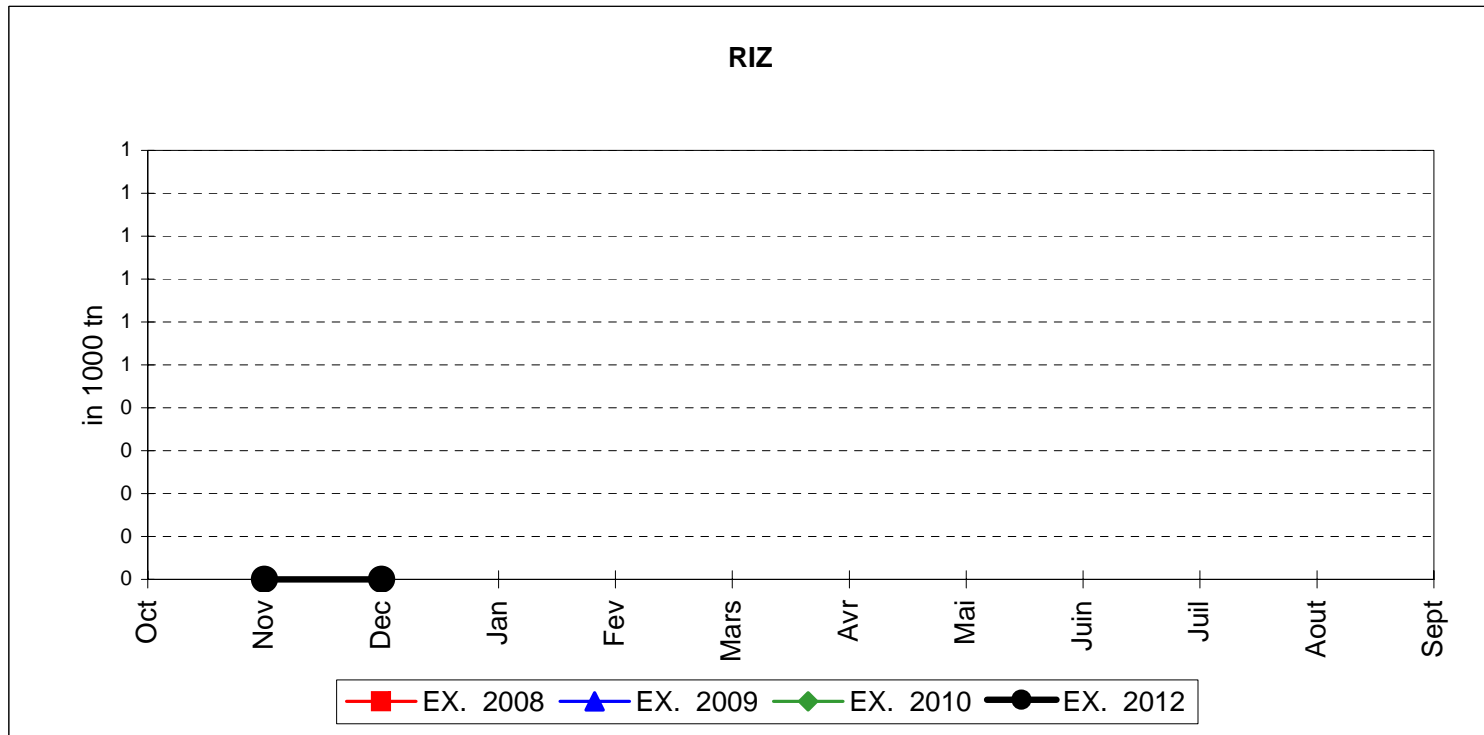
### MAIS



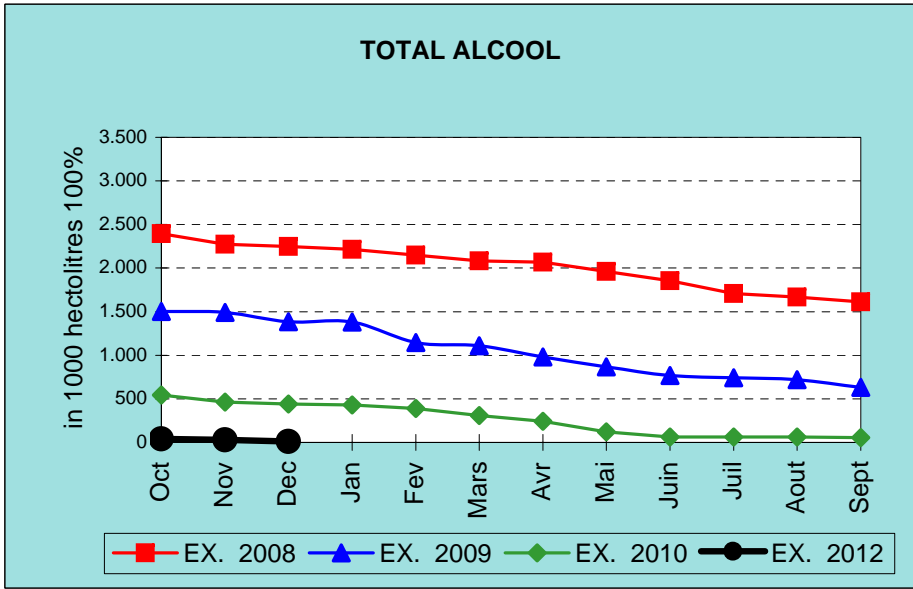
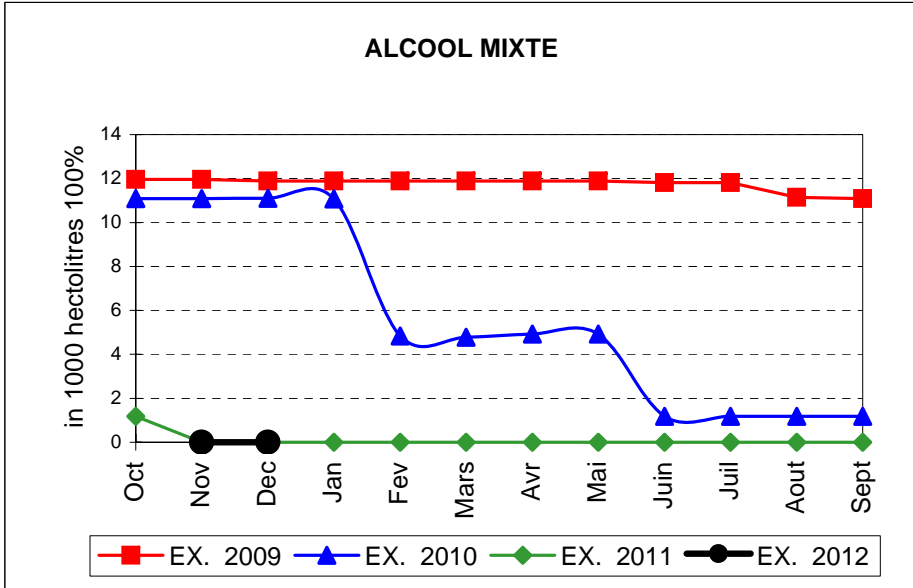
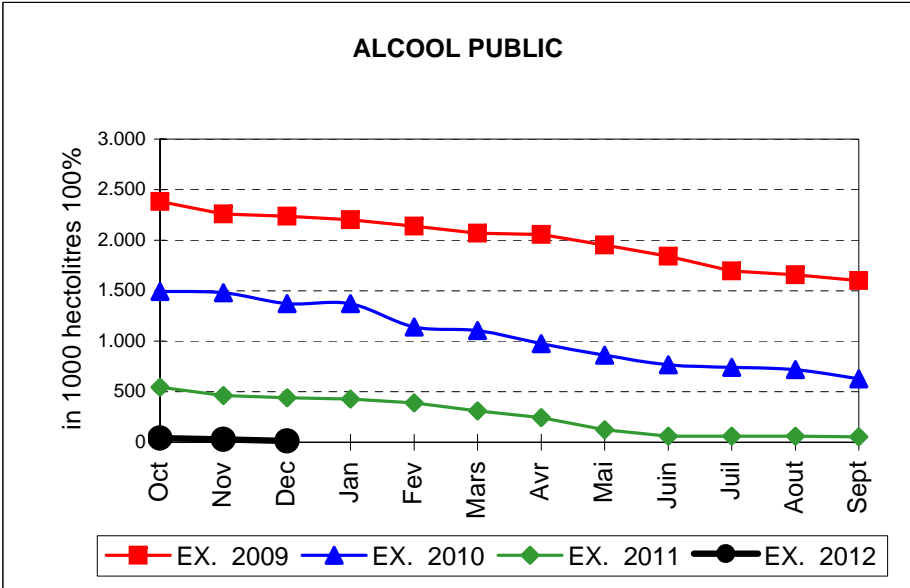
### TOTAL CEREALES



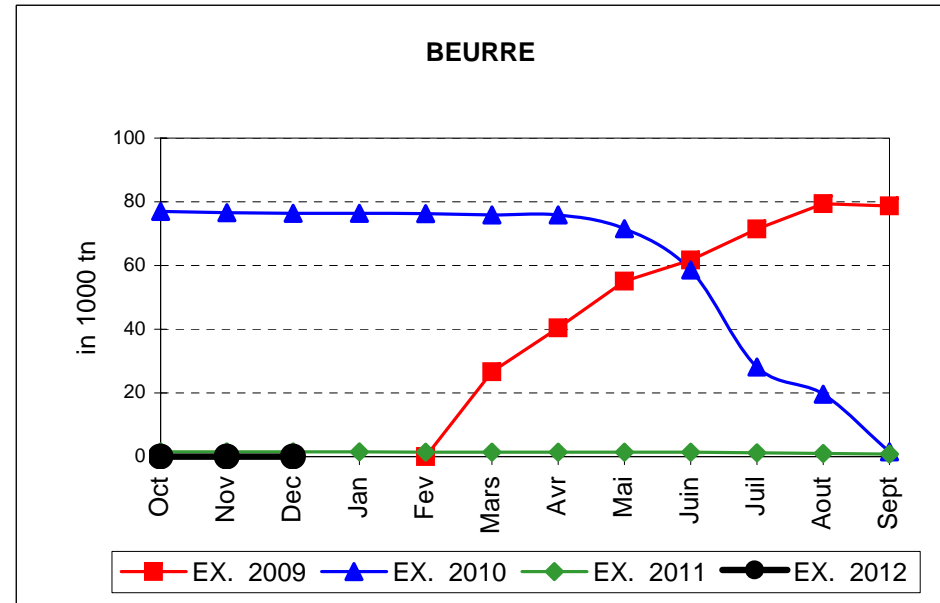
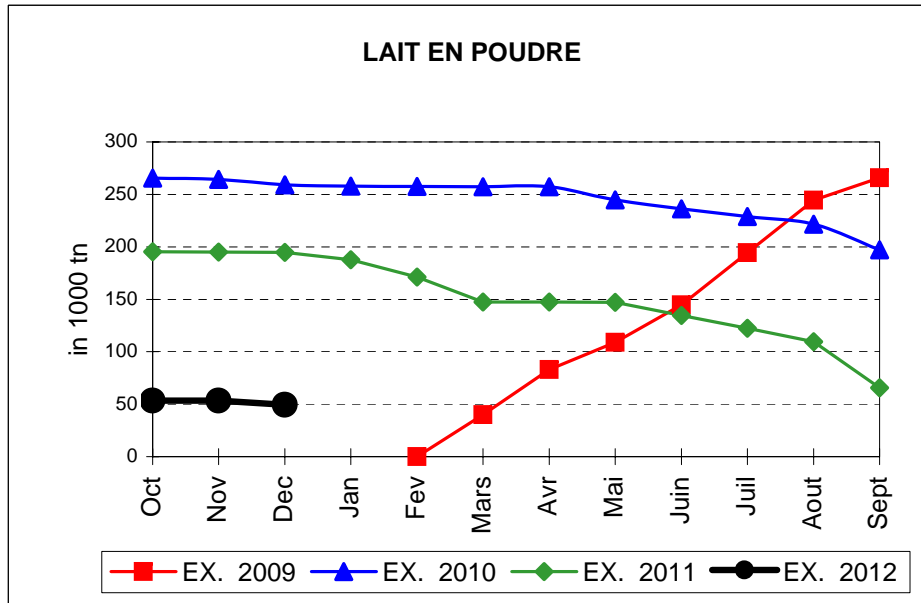
## EVOLUTION IN QUANTITIES OF PUBLIC INTERVENTION STOCKS



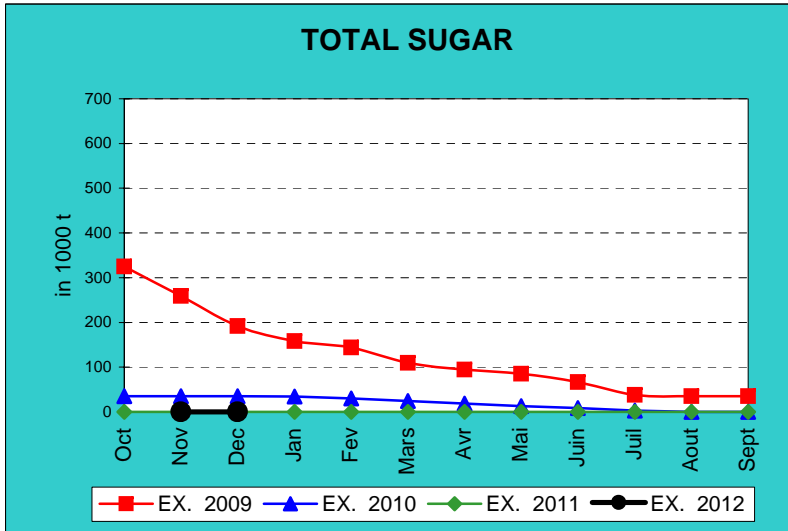
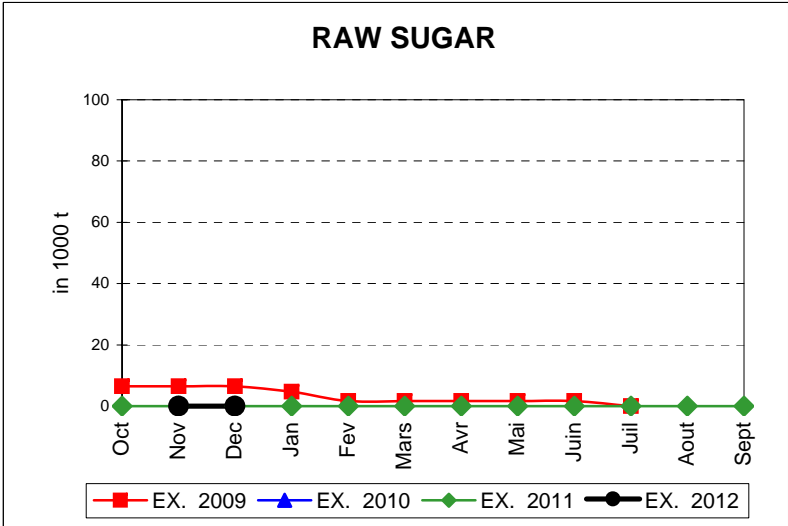
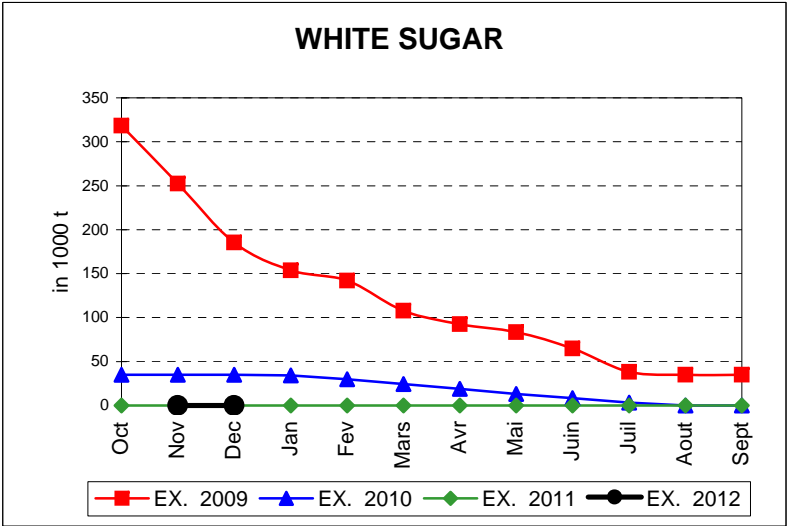
# EVOLUTION IN QUANTITIES OF PUBLIC INTERVENTION STOCKS



## EVOLUTION IN QUANTITIES OF PUBLIC INTERVENTION STOCKS



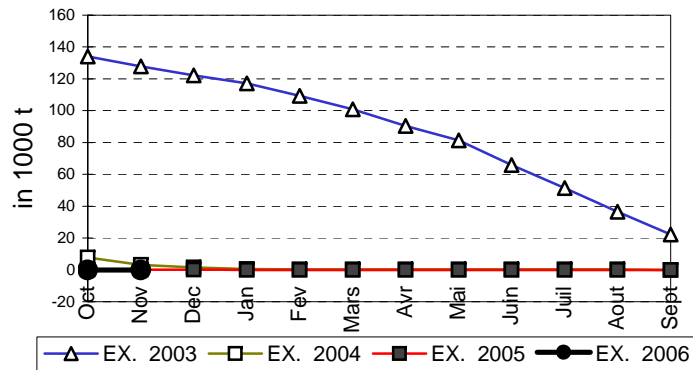
# EVOLUTION IN QUANTITIES OF PUBLIC INTERVENTION STOCKS



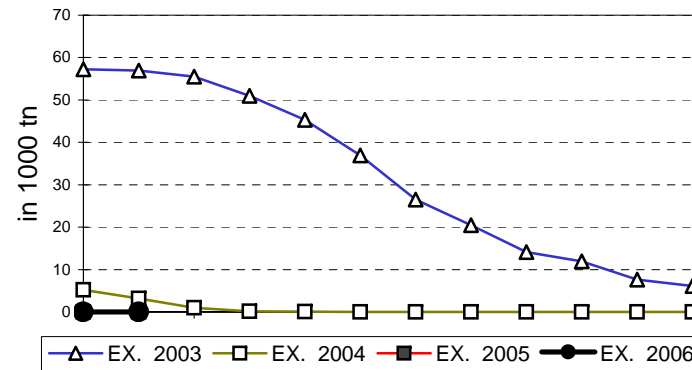


## EVOLUTION IN QUANTITIES OF PUBLIC INTERVENTION STOCKS

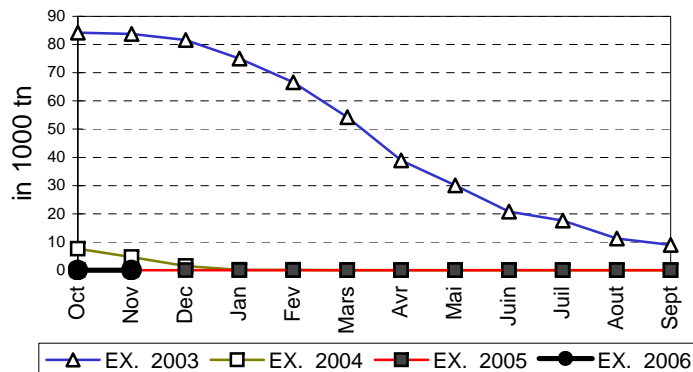
### VIANDE BOVINE CARCASSES



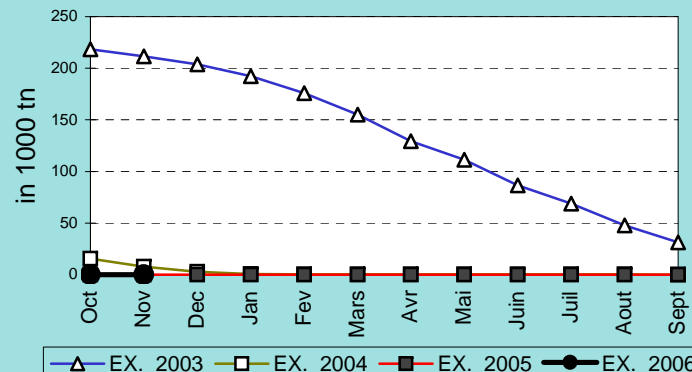
### VIANDE BOVINE DESOSSEE



### VIANDE DESOSSEE EN EQUIVALENT CARCASSES



### TOTAL VIANDE EN EQUIVALENT CARCASSES



## COMPARED WITH PREVIOUS MONTH

EU TOTAL	31-dic-11		30-nov-11		CHANGE IN QTY		CHANGE IN VALUE	
	QUANTITY (tn or hl)	VALUE (in Euro)	QUANTITY (tn or hl)	VALUE (in Euro)	ABSOLUTE (tn or hl)	%	ABSOLUTE (in Euro)	%
CLICK TOTALS FOR GRAPHICS	(a)	(b)	(c)	(d)	(e)=(a)-(c)	(f)=(e)/(c)*%	(g)=(b)-(d)	(h)=(g)/(d)*%
<b>Blé panifiable</b>								
Orge	162.584	16.445.976	162.584	16.446.034	-1	0%	-59	0%
Seigle								
Sorgho								
Mais								
<b>TOTAL CEREALES</b>	<b>162.584</b>	<b>16.445.976</b>	<b>162.584</b>	<b>16.446.034</b>	<b>-1</b>	<b>0%</b>	<b>-59</b>	<b>0%</b>
<b>TOTAL RIZ</b>								
<b>Alcool Public</b>	11.702	328.168	29.284	819.301	-17.582	-60%	-491.133	-60%
Alcool Mixte								
<b>TOTAL ALCOOL (HL 100%)</b>	<b>11.702</b>	<b>328.168</b>	<b>29.284</b>	<b>819.301</b>	<b>-17.582</b>	<b>-60%</b>	<b>-491.133</b>	<b>-60%</b>
<b>LEP</b>	49.522	73.812.976	53.555	79.830.823	-4.033	-8%	-6.017.846	-8%
Beurre	1	2.922	1	2.922				
<b>TOTAL LAIT ET BEURRE</b>	<b>49.524</b>	<b>73.815.899</b>	<b>53.557</b>	<b>79.833.745</b>	<b>-4.033</b>	<b>-8%</b>	<b>-6.017.846</b>	<b>-8%</b>
<b>Sucre blanc</b>								
Sucre brut								
<b>TOTAL SUCRE</b>								
<b>Bov. carc.</b>								
<b>Bov. des.</b>								
<b>Eq. carc.</b>								
<b>TOTAL EQ. CARCASSES</b>								
<b>GRAND TOTAL</b>		<b>90.590.042</b>		<b>97.099.081</b>			<b>-6.509.039</b>	<b>-7%</b>

SOURCE : The declarations of the Member States before controls.

## COMPARED WITH PREVIOUS YEAR

EU TOTAL	31-dic-11		31-dic-10		CHANGE IN QTY		CHANGE IN VALUE	
	QUANTITY (tn or hl)	VALUE (in Euro)	QUANTITY (tn or hl)	VALUE (In Euro)	ABSOLUTE (tn or hl)	%	ABSOLUTE (in Euro)	%
CLICK TOTALS FOR GRAPHICS	(a)	(b)	(c)	(d)	(e)=(a)-(c)	(f)=(e)/(c)*%	(g)=(b)-(d)	(h)=(g)/(d)*%
Blé panifiable			201.805	20.409.382	-201.805	-100%	-20.409.382	-100%
Orge	162.584	16.445.976	5.150.531	522.760.194	-4.987.947	-97%	-506.314.219	-97%
Seigle								
Sorgho								
Mais			0	0	0	-100%	0	-100%
<b>TOTAL CEREALES</b>	<b>162.584</b>	<b>16.445.976</b>	<b>5.352.336</b>	<b>543.169.577</b>	<b>-5.189.752</b>	<b>-97%</b>	<b>-526.723.601</b>	<b>-97%</b>
<b>TOTAL RIZ</b>								
Alcool Public	11.702	328.168	440.172	14.967.320	-428.471	-97%	-14.639.152	-98%
Alcool Mixte								
<b>TOTAL ALCOOL (HL 100%)</b>	<b>11.702</b>	<b>328.168</b>	<b>440.172</b>	<b>14.967.320</b>	<b>-428.471</b>	<b>-97%</b>	<b>-14.639.152</b>	<b>-98%</b>
LEP	49.522	73.812.976	194.803	290.529.260	-145.281	-75%	-216.716.283	-75%
Beurre	1	2.922	1.544	3.341.537	-1.543	-100%	-3.338.615	-100%
<b>TOTAL LAIT ET BEURRE</b>	<b>49.524</b>	<b>73.815.899</b>	<b>196.348</b>	<b>293.870.797</b>	<b>-146.824</b>	<b>-75%</b>	<b>-220.054.898</b>	<b>-75%</b>
Sucre blanc			9	3.052	-9	-100%	-3.052	-100%
Sucre brut								
<b>TOTAL SUCRE</b>			<b>9</b>	<b>3.052</b>	<b>-9</b>	<b>-100%</b>	<b>-3.052</b>	<b>-100%</b>
Bov. carc.								
Bov. des.								
Eq. carc.								
<b>TOTAL EQ. CARCASSES</b>								
<b>GRAND TOTAL</b>		<b>90.590.042</b>		<b>852.010.745</b>			<b>-761.420.703</b>	<b>-89%</b>

SOURCE :

The declarations of the Member States before controls.

THE PUBLIC STORAGE FLASH REPORT AS AT						31-dic-11			
ESPAÑA									
PRODUCTS	YEAR-TO-DATE		OPENING BALANCE		CHANGE IN QTY		CHANGE IN VALUE		
	QUANTITY (in tonnes or hl)	VALUE (in Euro)	QUANTITY (in tonnes or hl)	VALUE (in Euro)	ABSOLUTE (in tonnes or hl)	%	ABSOLUTE (in Euro)	%	
	(a)	(b)	(c)	(d)	(e)=(a)-(c)	(f)=(e)/(c)*%	(g)=(b)-(d)	(h)=(g)/(d)*%	
Ble panifiable									
Orge									
Seigle									
Sorgho									
Mais									
<b>TOTAL CEREALES</b>									
<b>RIZ</b>									
Alcool Public									
Alcool Mixte									
<b>TOT. ALCOOL (HL)</b>									
LEP									
Beurre									
<b>TOTAL L &amp; B</b>									
Sucre Blanc									
Sucre Brut									
<b>TOTAL SUCRE</b>									
Bov. carc.									
Bov. des.									
Eq. carc.									
<b>TOTAL EQ. CARC.</b>									
<b>GRAND TOTAL</b>									

