

CHOOSE COUNTRY

EU TOTAL	YEAR-TO-DATE		OPENING BALANCE (1)		CHANGE IN QTY		CHANGE IN VALUE	
	QUANTITY (tn or hl)	VALUE (in Euro)	QUANTITY (tn or hl)	VALUE (In Euro)	ABSOLUTE (tn or hl)	%	ABSOLUTE (in Euro)	%
CLICK TOTALS FOR GRAPHICS	(a)	(b)	(c)	(d)	(e)=(a)-(c)	(f)=(e)/(c)*%	(g)=(b)-(d)	(h)=(g)/(d)*%
Blé panifiable	2.973	311.344	37	3.302	2.937	7999%	308.042	9329%
Orge	43.006	4.452.999			43.006		4.452.999	
Seigle								
Sorgho								
Mais	20.332	1.996.380	47.207	4.635.238	-26.875	-57%	-2.638.858	-57%
TOTAL CEREALES	66.311	6.760.723	47.244	4.638.540	19.067	40%	2.122.183	46%
TOTAL RIZ								
Alcool Public	2.200.923	93.911.059	2.484.895	104.449.771	-283.971	-11%	-10.538.713	-10%
Alcool Mixte	11.894	184.533	11.894	184.533	0	0%	1	0%
TOTAL ALCOOL (HL 100%)	2.212.818	94.095.592	2.496.789	104.634.304	-283.971	-11%	-10.538.712	-10%
LEP								
Beurre								
TOTAL LAIT ET BEURRE								
Sucre Blanc	153.592	50.976.899	325.254	108.760.191	-171.662	-53%	-57.783.292	-53%
Sucre Brut	4.671	1.129.383	10.902	2.635.883	-6.231	-57%	-1.506.500	-57%
TOTAL SUCRE	158.263	52.106.282	336.156	111.396.074	-177.893	-53%	-59.289.792	-53%
Bov. carc.								
Bov. des.								
Eq. carc.								
TOTAL EQ. CARCASSES								
GRAND TOTAL		152.962.597		220.668.917			-67.706.320	-31%

SOURCE : The declarations of the Member States before controls.

(1) Period 13/2008 annual declaration

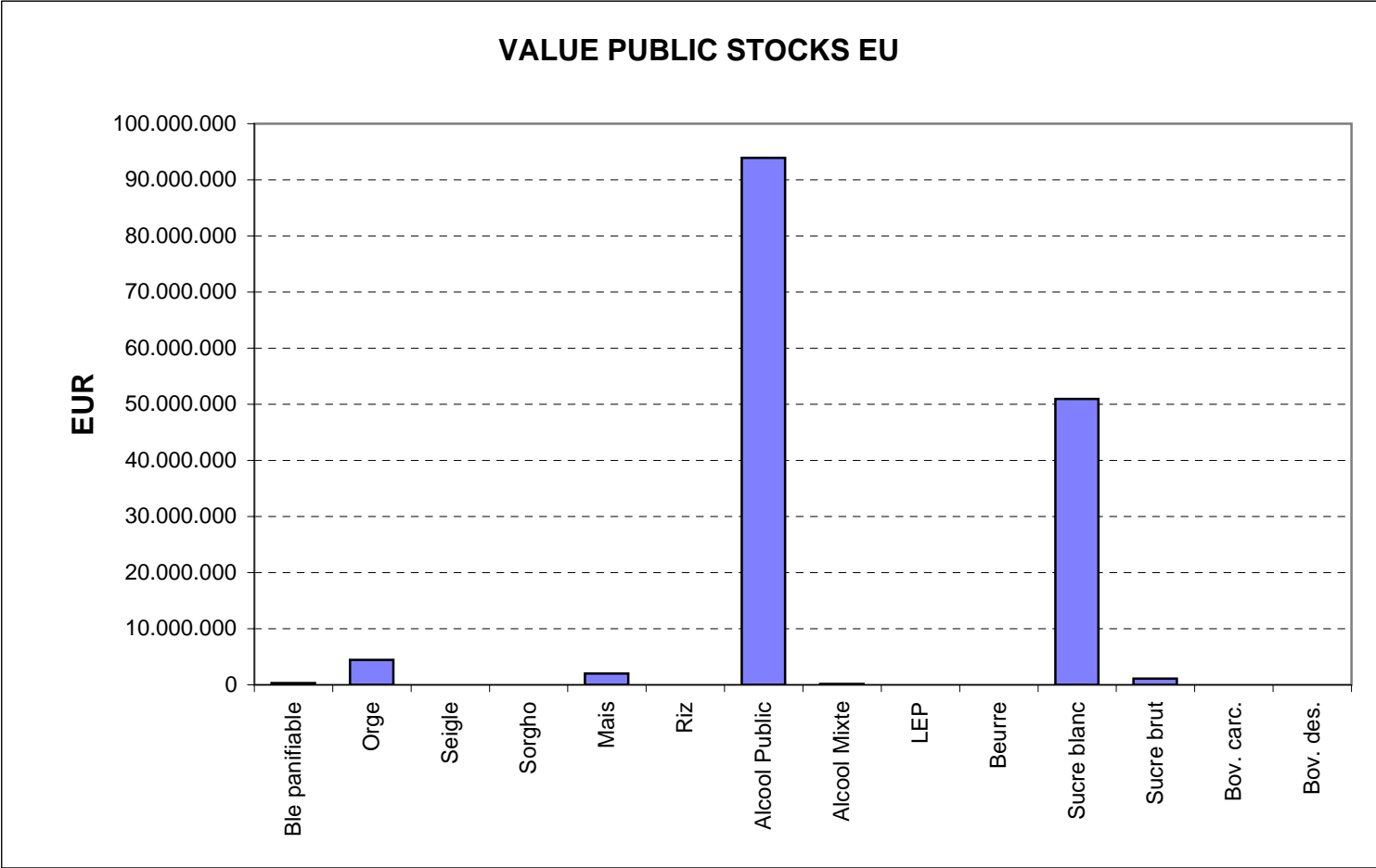
quantities are expressed in
tonnes (alcohol in hl 100%)

ACCOUNTING VALUE OF THE PUBLIC INTERVENTION STOCKS AS AT : 31-ene-09
(BEFORE THE COMPLEMENTARY DEPRECIATION)

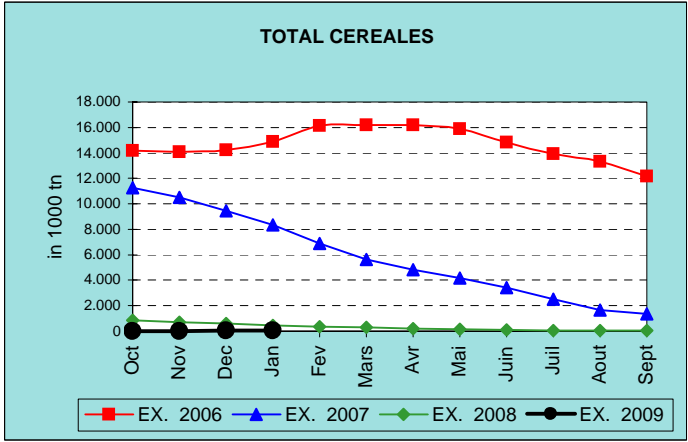
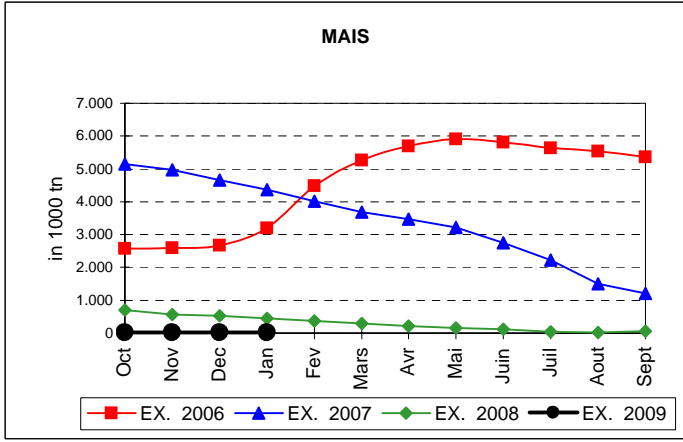
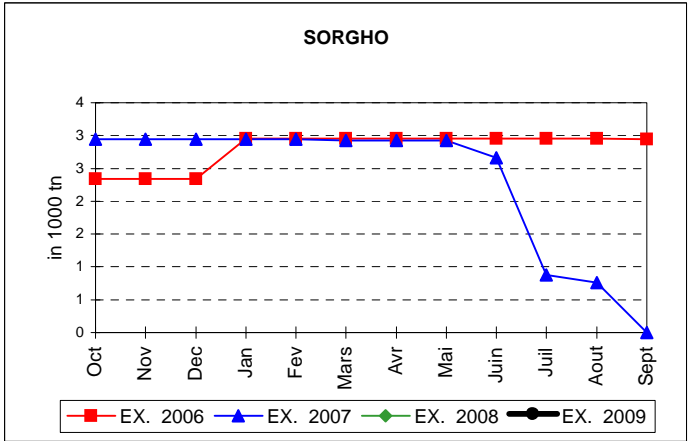
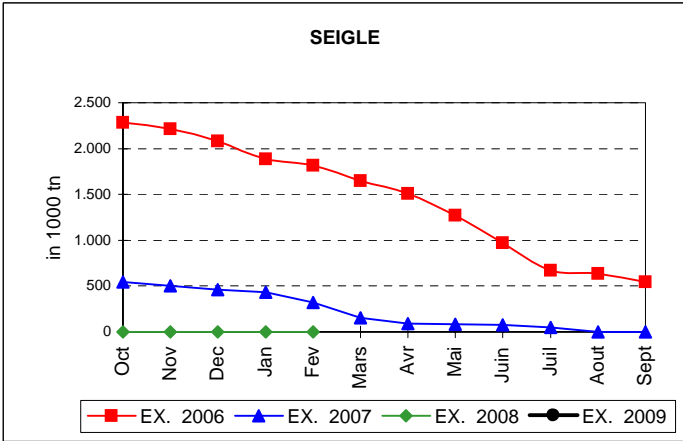
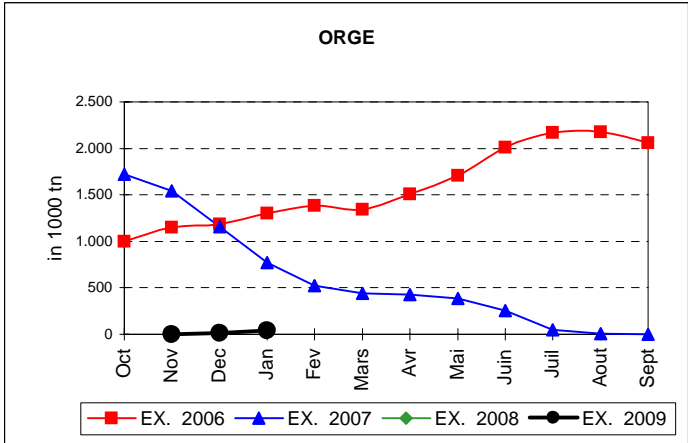
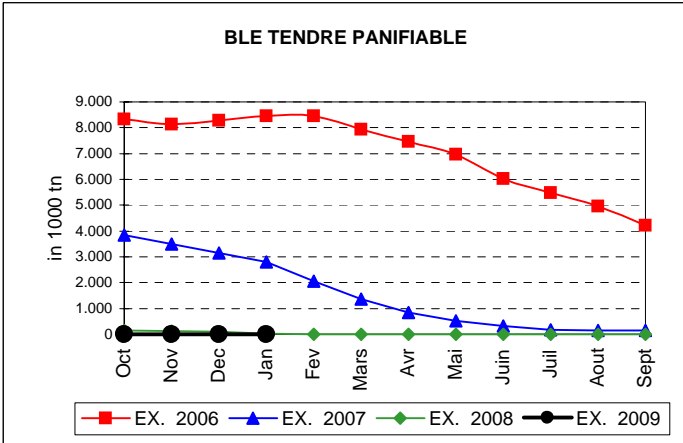
AGRI I.4
J. FLORET tel. 53236

Produits		BE	BG	CZ	DK	DE	EE	IE	EL	ES	FR	IT	CY	LV	LT	LU	HU	MT	NL	OS	PL	PO	RO	SI	SK	FIN	SE	UK	TOTAL
BLE PANIF	quant.			2.937													37												2.973
	valeur			308.042													3.302												311.344
ORGE	quant.			15.666		14.745	178								7.496					406						4.515		43.006	
	valeur			1.652.098		1.506.969	18.769								769.691					41.781						463.691		4.452.999	
SEIGLE	quant.																												
SEIGLE	valeur																												
SORGHO	quant.																												
SORGHO	valeur																												
MAIS	quant.																20.332											20.332	
	valeur																1.996.380											1.996.380	
TOT.CER	quant.			18.602		14.745	178								7.496		20.369			406						4.515		66.311	
RIZ	quant.																												
RIZ	valeur																												
ALC.P.	quant.								60.366	773.735	530.362	700.361	7.285				55.426					73.388						2.200.923	
	valeur								2.584.868	32.729.006	22.259.306	30.059.478	332.865				2.351.726					3.593.809						93.911.059	
ALC.M.	quant.										1.789	10.105																11.894	
	valeur										7.084	177.449																184.533	
TOT.ALC.	quant.								60.366	773.735	532.151	710.466	7.285				55.426					73.388					2.212.818		
LEP	quant.																												
LEP	valeur																												
BEURRE	quant.																												
BEURRE	valeur																												
TOT L&B	quant.																												
S. BLANC	quant.	7.081		29.821				12.000				64.812					5.879								34.000			153.592	
	valeur	2.070.765		10.055.562				3.491.160				21.827.966					2.066.645								11.464.800			50.976.899	
S. BRUT	quant.																									4.671		4.671	
	valeur																									1.129.383		1.129.383	
TOT. SUC	quant.	7.081		29.821				12.000				64.812					5.879								34.000	4.671	158.263		
BOV.QUA	quant.																												
BOV.QUA	valeur																												
BOV.DES	quant.																												
BOV.DES	valeur																												
EQ. CARC	quant.																												
TOT EQ	quant.																												
EU TOTAL	valeur	2.070.765		12.015.702		1.506.969	18.769	3.491.160	2.584.868	32.729.006	22.266.390	52.064.894	332.865	769.691		6.418.053			41.781		3.593.809				11.464.800	463.691	1.129.383	152.962.597	

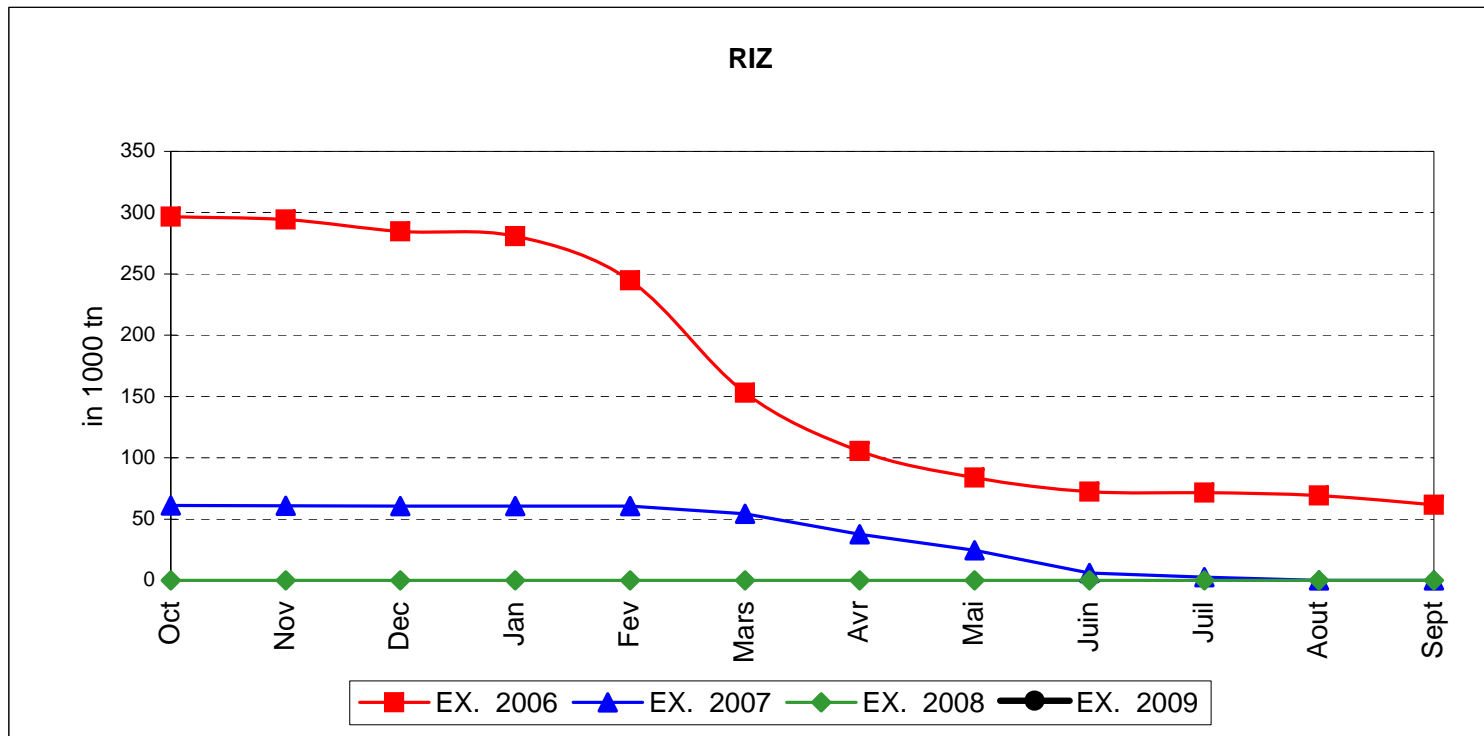
PUBLIC INTERVENTION STOCKS



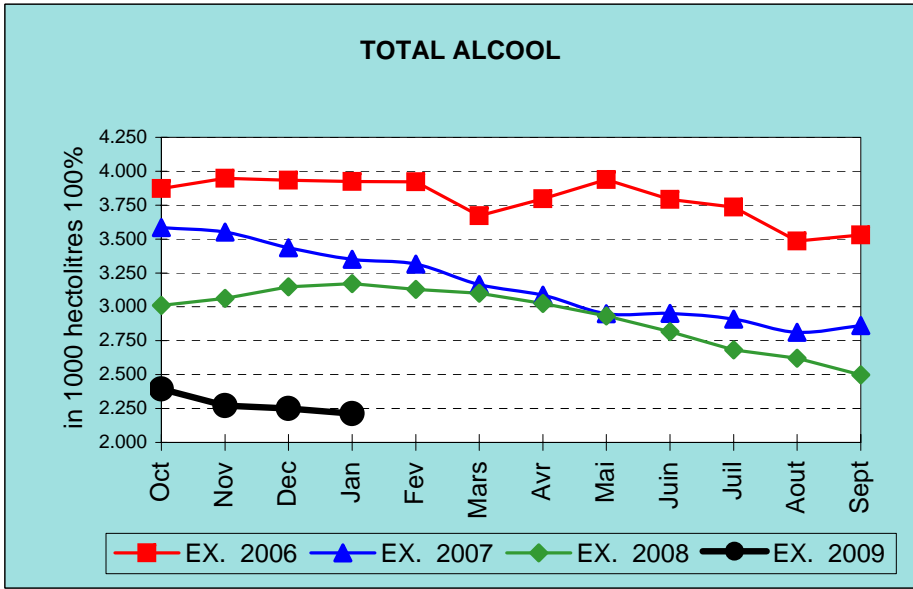
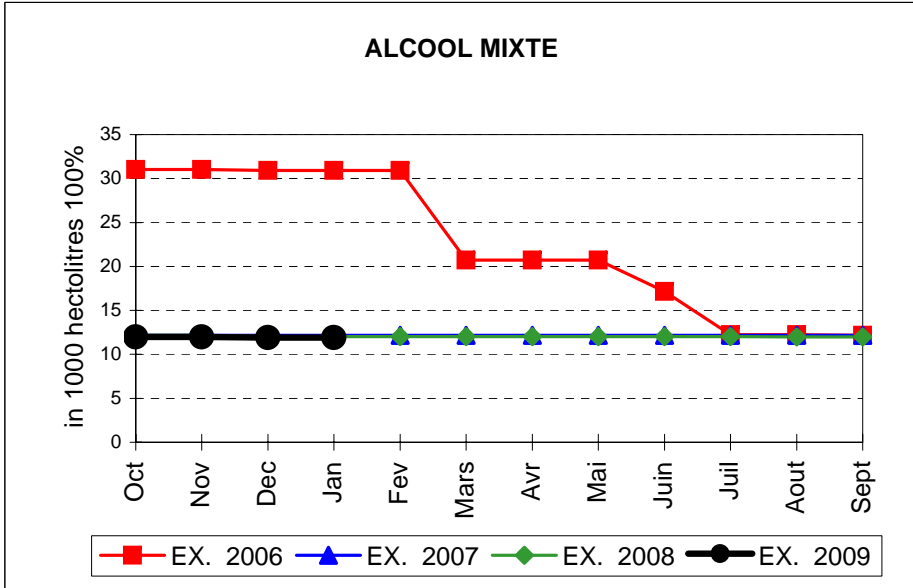
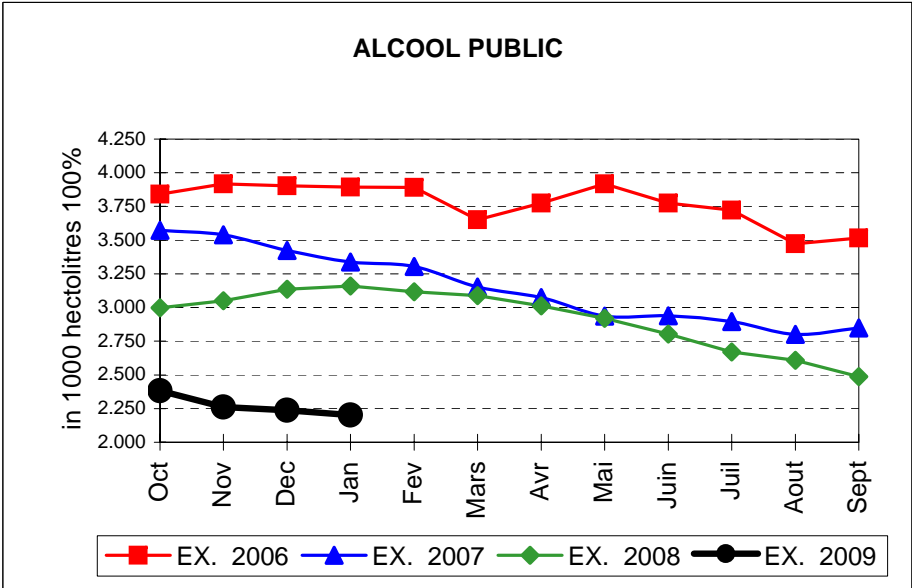
EVOLUTION IN QUANTITIES OF PUBLIC INTERVENTION STOCKS



EVOLUTION IN QUANTITIES OF PUBLIC INTERVENTION STOCKS

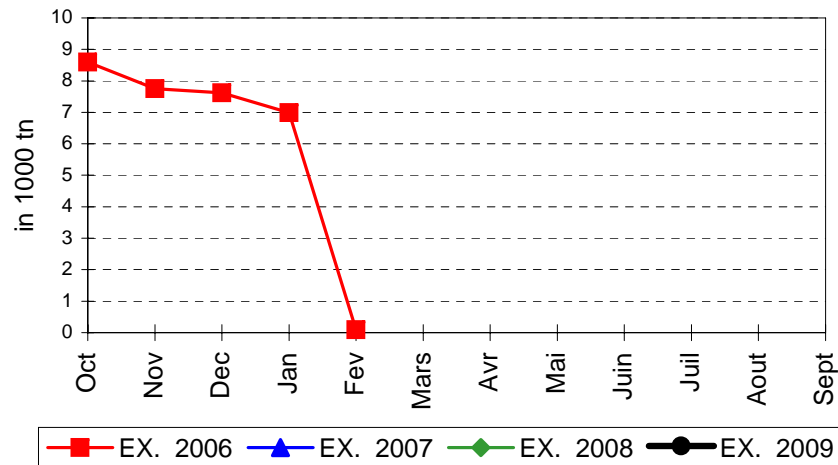


EVOLUTION IN QUANTITIES OF PUBLIC INTERVENTION STOCKS

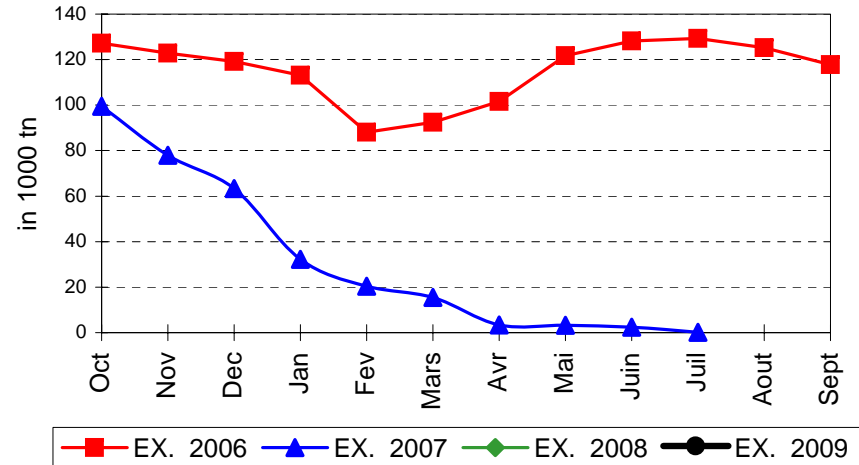


EVOLUTION IN QUANTITIES OF PUBLIC INTERVENTION STOCKS

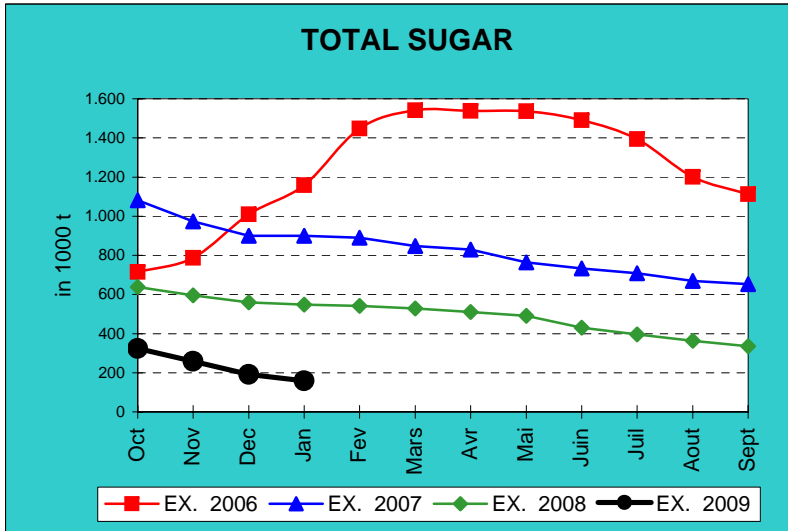
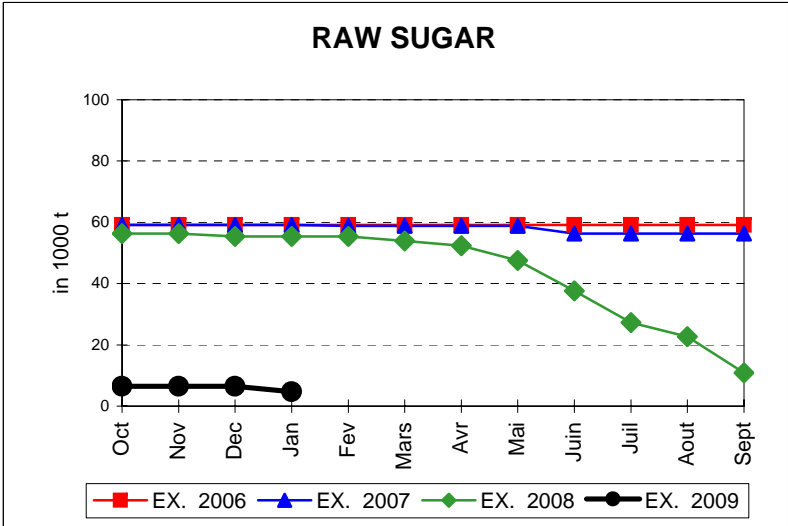
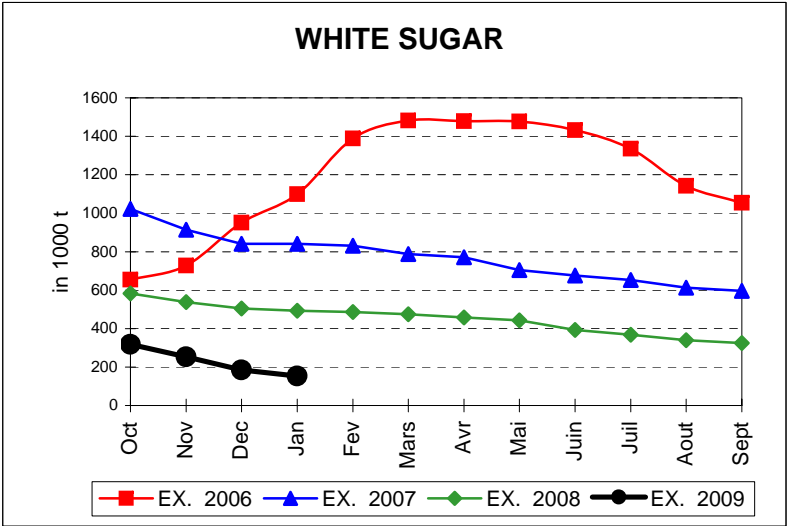
LAIT EN POUVRE



BEURRE

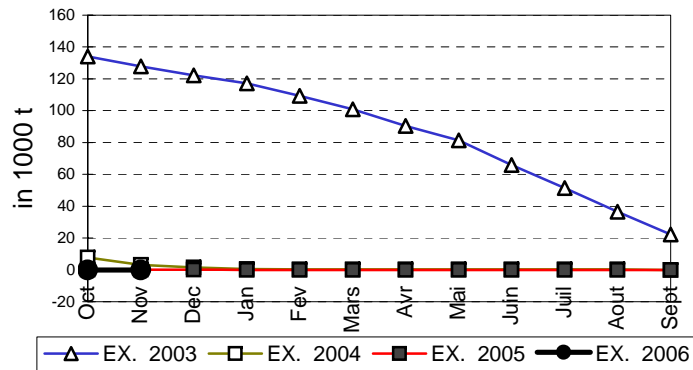


EVOLUTION IN QUANTITIES OF PUBLIC INTERVENTION STOCKS

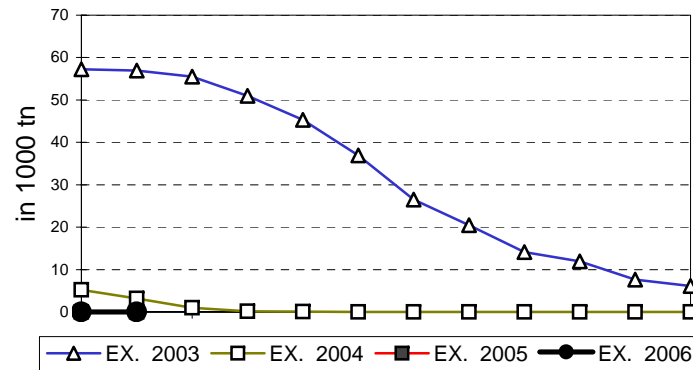


EVOLUTION IN QUANTITIES OF PUBLIC INTERVENTION STOCKS

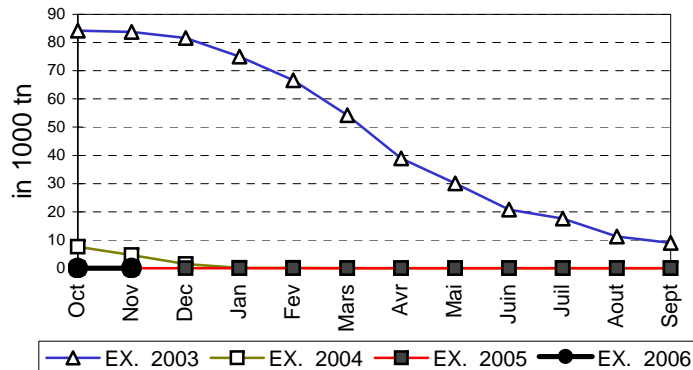
VIANDE BOVINE CARCASSES



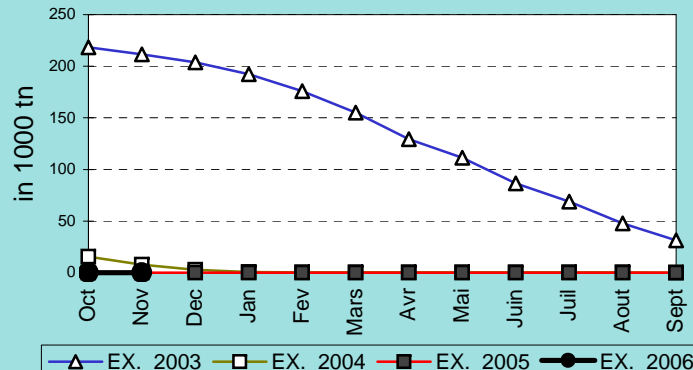
VIANDE BOVINE DESOSSEE



VIANDE DESOSSEE EN EQUIVALENT CARCASSES



TOTAL VIANDE EN EQUIVALENT CARCASSES



COMPARED WITH PREVIOUS MONTH

EU TOTAL	31-ene-09		31-dic-08		CHANGE IN QTY		CHANGE IN VALUE	
	QUANTITY (tn or hl)	VALUE (in Euro)	QUANTITY (tn or hl)	VALUE (In Euro)	ABSOLUTE (tn or hl)	%	ABSOLUTE (in Euro)	%
CLICK TOTALS FOR GRAPHICS	(a)	(b)	(c)	(d)	(e)=(a)-(c)	(f)=(e)/(c)*%	(g)=(b)-(d)	(h)=(g)/(d)*%
Blé panifiable	2.973	311.344	37	3.302	2.937	7999%	308.042	9329%
Orge	43.006	4.452.999	12.885	1.340.970	30.121	234%	3.112.029	232%
Seigle								
Sorgho								
Mais	20.332	1.996.380	22.842	2.242.849	-2.510	-11%	-246.469	-11%
TOTAL CEREALES	66.311	6.760.723	35.764	3.587.122	30.547	85%	3.173.601	88%
TOTAL RIZ								
Alcool Public	2.200.923	93.911.059	2.237.531	95.441.203	-36.607	-2%	-1.530.145	-2%
Alcool Mixte	11.894	184.533	11.894	184.533				
TOTAL ALCOOL (HL 100%)	2.212.818	94.095.592	2.249.425	95.625.737	-36.607	-2%	-1.530.145	-2%
LEP								
Beurre								
TOTAL LAIT ET BEURRE								
Sucre blanc	153.592	50.976.899	185.222	61.525.943	-31.630	-17%	-10.549.045	-17%
Sucre brut	4.671	1.129.383	6.444	1.558.098	-1.773	-28%	-428.715	-28%
TOTAL SUCRE	158.263	52.106.282	191.666	63.084.041	-33.403	-17%	-10.977.759	-17%
Bov. carc.								
Bov. des.								
Eq. carc.								
TOTAL EQ. CARCASSES								
GRAND TOTAL		152.962.597		162.296.900			-9.334.303	-6%

SOURCE : The declarations of the Member States before controls.

COMPARED WITH PREVIOUS YEAR

EU TOTAL	31-ene-09		31-ene-08		CHANGE IN QTY		CHANGE IN VALUE	
	QUANTITY (tn or hl)	VALUE (in Euro)	QUANTITY (tn or hl)	VALUE (In Euro)	ABSOLUTE (tn or hl)	%	ABSOLUTE (in Euro)	%
CLICK TOTALS FOR GRAPHICS	(a)	(b)	(c)	(d)	(e)=(a)-(c)	(f)=(e)/(c)*%	(g)=(b)-(d)	(h)=(g)/(d)*%
Blé panifiable	2.973	311.344	14.205	1.292.807	-11.232	-79%	-981.463	-76%
Orge	43.006	4.452.999			43.006		4.452.999	
Seigle			11	688	-11	-100%	-688	-100%
Sorgho								
Mais	20.332	1.996.380	443.994	43.595.777	-423.662	-95%	-41.599.397	-95%
TOTAL CEREALES	66.311	6.760.723	458.209	44.889.272	-391.898	-86%	-38.128.549	-85%
TOTAL RIZ								
Alcool Public	2.200.923	93.911.059	3.159.521	144.206.490	-958.597	-30%	-50.295.431	-35%
Alcool Mixte	11.894	184.533	12.015	186.670	-121	-1%	-2.137	-1%
TOTAL ALCOOL (HL 100%)	2.212.818	94.095.592	3.171.536	144.393.160	-958.718	-30%	-50.297.568	-35%
LEP								
Beurre								
TOTAL LAIT ET BEURRE								
Sucre blanc	153.592	50.976.899	492.502	178.596.665	-338.911	-69%	-127.619.766	-71%
Sucre brut	4.671	1.129.383	55.342	13.380.658	-50.671	-92%	-12.251.274	-92%
TOTAL SUCRE	158.263	52.106.282	547.845	191.977.323	-389.582	-71%	-139.871.041	-73%
Bov. carc.								
Bov. des.								
Eq. carc.								
TOTAL EQ. CARCASSES								
GRAND TOTAL		152.962.597		381.259.754			-228.297.157	-60%

SOURCE :

The declarations of the Member States before controls.

THE PUBLIC STORAGE FLASH REPORT AS AT						31-ene-09			
ESPAÑA									
PRODUCTS	YEAR-TO-DATE		OPENING BALANCE		CHANGE IN QTY		CHANGE IN VALUE		
	QUANTITY (in tonnes or hl)	VALUE (in Euro)	QUANTITY (in tonnes or hl)	VALUE (in Euro)	ABSOLUTE (in tonnes or hl)	%	ABSOLUTE (in Euro)	%	
	(a)	(b)	(c)	(d)	(e)=(a)-(c)	(f)=(e)/(c)*%	(g)=(b)-(d)	(h)=(g)/(d)*%	
Ble panifiable									
Orge									
Seigle									
Sorgho									
Mais									
TOTAL CEREALES									
RIZ									
Alcool Public	773.735	32.729.006	820.230	34.532.971	-46.495	-6%	-1.803.965	-5%	
Alcool Mixte									
TOT. ALCOOL (HL)	773.735	32.729.006	820.230	34.532.971	-46.495	-6%	-1.803.965	-5%	
LEP									
Beurre									
TOTAL L & B									
Sucre Blanc									
Sucre Brut									
TOTAL SUCRE									
Bov. carc.									
Bov. des.									
Eq. carc.									
TOTAL EQ. CARC.									
GRAND TOTAL		32.729.006		34.532.971			-1.803.965	-5%	

31-ene-09

