

CHOOSE COUNTRY

EU TOTAL	YEAR-TO-DATE		OPENING BALANCE (1)		CHANGE IN QTY		CHANGE IN VALUE	
	QUANTITY (tn or hl)	VALUE (in Euro)	QUANTITY (tn or hl)	VALUE (In Euro)	ABSOLUTE (tn or hl)	%	ABSOLUTE (in Euro)	%
CLICK TOTALS FOR GRAPHICS	(a)	(b)	(c)	(d)	(e)=(a)-(c)	(f)=(e)/(c)*%	(g)=(b)-(d)	(h)=(g)/(d)*%
Blé panifiable	147.916	14.982.173	234.577	23.710.769	-86.661	-37%	-8.728.596	-37%
Orge	4.382.889	445.090.061	5.326.162	540.451.972	-943.273	-18%	-95.361.911	-18%
Seigle								
Sorgho								
Mais			3.142	318.234	-3.142	-100%	-318.234	-100%
<b>TOTAL CEREALES</b>	<b>4.530.805</b>	<b>460.072.234</b>	<b>5.563.880</b>	<b>564.480.975</b>	<b>-1.033.075</b>	<b>-19%</b>	<b>-104.408.741</b>	<b>-18%</b>
<b>TOTAL RIZ</b>								
Alcool Public	428.890	14.583.609	628.630	21.369.957	-199.740	-32%	-6.786.348	-32%
Alcool Mixte			1.173	4.645	-1.173	-100%	-4.645	-100%
<b>TOTAL ALCOOL (HL 100%)</b>	<b>428.890</b>	<b>14.583.609</b>	<b>629.803</b>	<b>21.374.602</b>	<b>-200.913</b>	<b>-32%</b>	<b>-6.790.993</b>	<b>-32%</b>
LEP	187.836	280.144.991	197.223	294.161.988	-9.387	-5%	-14.016.997	-5%
Beurre	1.544	3.341.537	1.545	3.343.770	-1	0%	-2.233	0%
<b>TOTAL LAIT ET BEURRE</b>	<b>189.380</b>	<b>283.486.528</b>	<b>198.769</b>	<b>297.505.758</b>	<b>-9.388</b>	<b>-5%</b>	<b>-14.019.230</b>	<b>-5%</b>
Sucre Blanc	9	3.052	9	3.052				
Sucre Brut								
<b>TOTAL SUCRE</b>	<b>9</b>	<b>3.052</b>	<b>9</b>	<b>3.052</b>				
Bov. carc.								
Bov. des.								
Eq. carc.								
<b>TOTAL EQ. CARCASSES</b>								
<b>GRAND TOTAL</b>		<b>758.145.422</b>		<b>883.364.387</b>			<b>-125.218.965</b>	<b>-14%</b>

SOURCE : The declarations of the Member States before controls.

(1) Period 13/2010 annual declaration

quantities are expressed in  
tonnes (alcohol in hl 100%)

ACCOUNTING VALUE OF THE PUBLIC INTERVENTION STOCKS AS AT :  
(BEFORE THE COMPLEMENTARY DEPRECIATION)

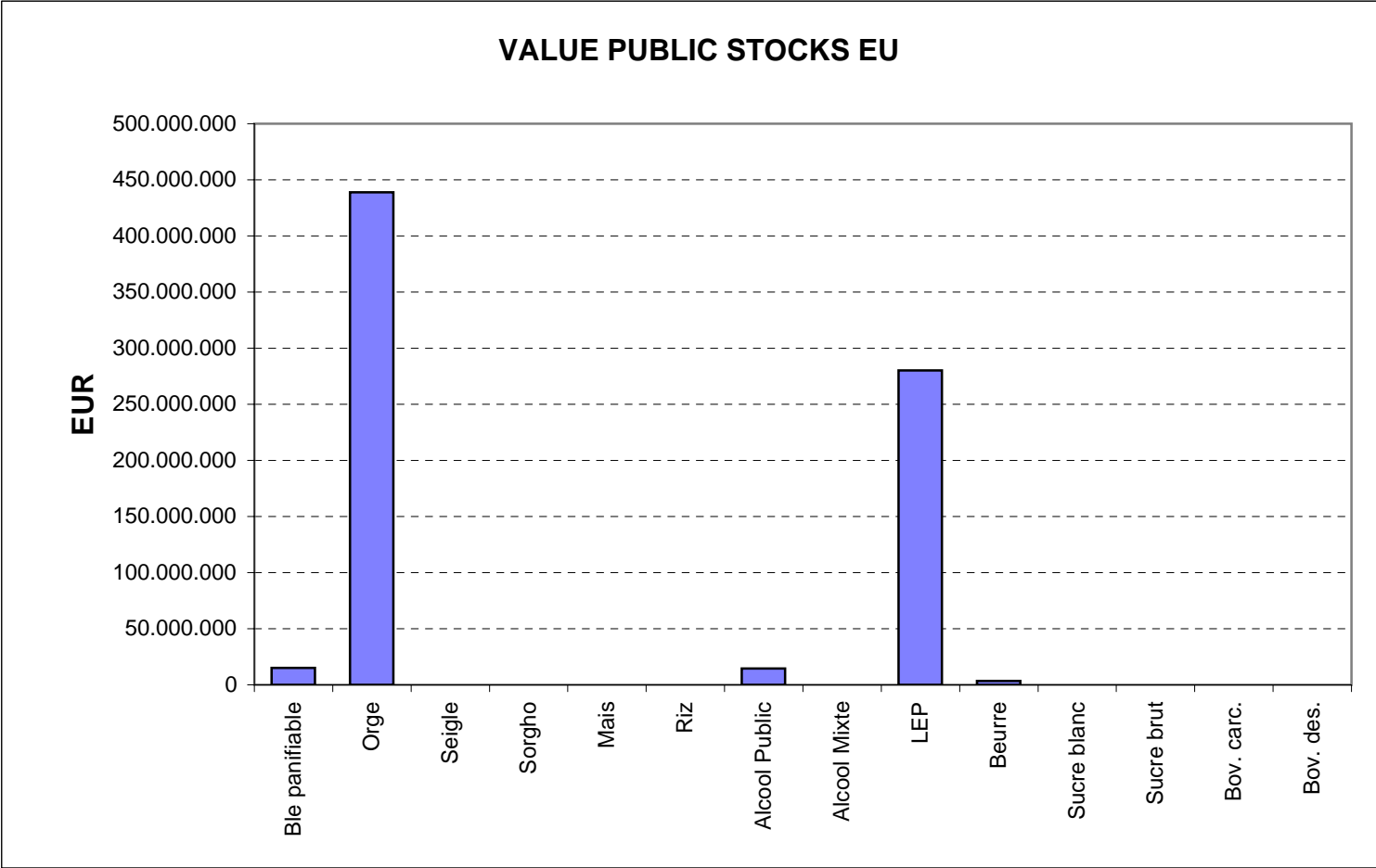
31-ene-11

AGRI I.4

J. FLORET tel. 53236

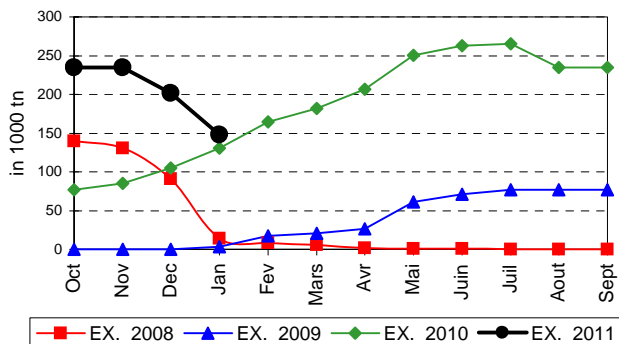
Produits		BE	BG	CZ	DK	DE	EE	IE	EL	ES	FR	IT	CY	LV	LT	LU	HU	MT	NL	OS	PL	PO	RO	SI	SK	FIN	SE	UK	TOTAL	
BLE PANIF	quant.		3.587	1.978											91	114.583					619				27.059				147.916	
	valeur		355.892	200.255											8.867	11.607.227						62.615				2.747.318				14.982.173
ORGE	quant.	34.951	42.101	256.498	43.524	1.158.707	43.818				924.842			22.993	60.909		277.439			19.753	364.991		61.433		105.347	682.893	136.883	145.805	4.382.889	
	valeur	3.548.585	4.348.146	27.047.728	4.433.311	116.450.059	4.442.737				94.130.455			2.317.023	6.135.967		28.298.815			2.005.567	36.802.085		6.273.544		10.723.302	69.764.314	13.927.855	14.440.567	445.090.061	
SEIGLE	quant.																													
SORGHO	quant.																													
MAIS	quant.																													
TOT.CER	quant.	34.951	45.687	258.476	43.524	1.158.707	43.818				924.842			22.993	61.000		392.022			19.753	365.610		61.433		132.406	682.893	136.883	145.805	4.530.805	
RIZ	quant.																													
ALC.P.	quant.								60.181	234.865			7.112				54.727					72.006								428.890
	valeur								2.046.144	7.987.759			241.520				1.860.713					2.447.473								14.583.609
ALC.M.	quant.																													
TOT.ALC.	quant.								60.181	234.865			7.112				54.727					72.006								428.890
LEP	quant.	22.050		2.902		63.463	1.665	32.170			23.888				4.632				13.916		2.597	607				1.052	3.614	15.280	187.836	
	valeur	32.652.668		4.571.734		94.426.449	2.382.081	48.058.217			35.791.212				6.941.917				20.803.436		3.850.494	909.158				1.575.738	5.411.965	22.769.921	280.144.991	
BEURRE	quant.						182								1.363															1.544
	valeur						371.083								2.970.454															3.341.537
TOT L&B	quant.	22.050		2.902		63.463	1.847	32.170			23.888				5.994				13.916		2.597	607				1.052	3.614	15.280	189.380	
S. BLANC	quant.			9																										9
	valeur			3.052																										3.052
S. BRUT	quant.																													
TOT. SUC	quant.			9																										9
BOV.QUA	quant.																													
BOV.DES	quant.																													
EQ. CARC	quant.																													
TOT EQ	quant.																													
EU TOTAL	valeur	36.201.254	4.704.038	31.822.769	4.433.311	210.876.508	7.195.901	48.058.217	2.046.144	7.987.759	129.921.667		241.520	2.317.023	16.057.205	41.766.754		20.803.436	2.005.567	40.715.194	3.356.631	6.273.544		13.470.620	71.340.052	19.339.820	37.210.488	758.145.422		

**PUBLIC INTERVENTION STOCKS**

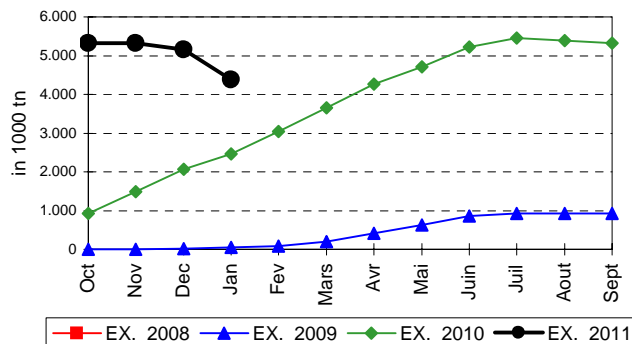


## EVOLUTION IN QUANTITIES OF PUBLIC INTERVENTION STOCKS

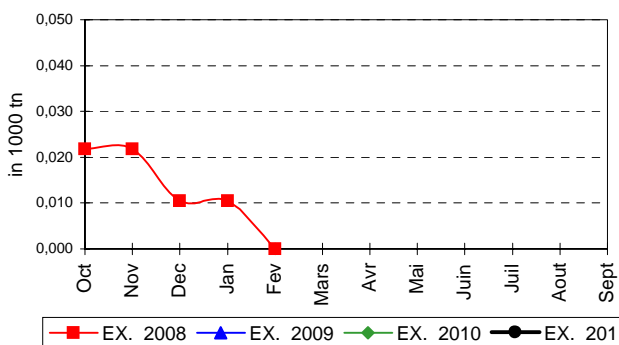
### BLE TENDRE PANIFIABLE



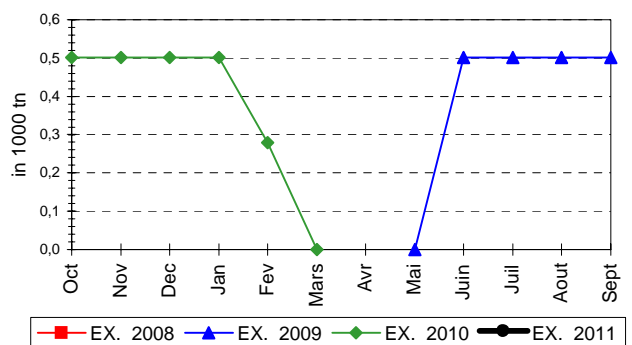
### ORGE



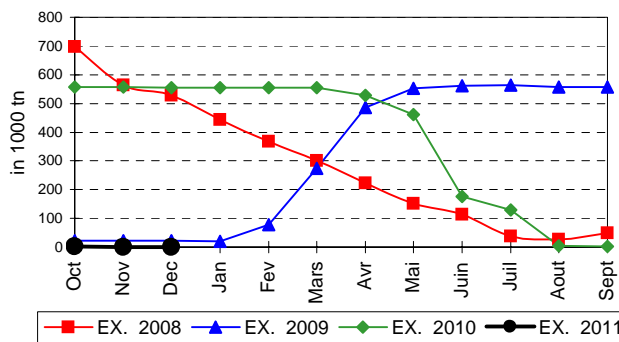
### SEIGLE



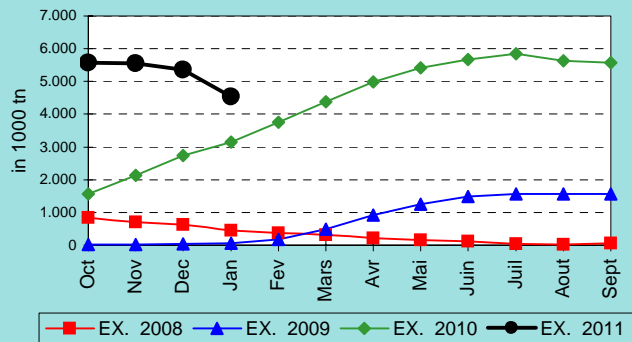
### SORGHO



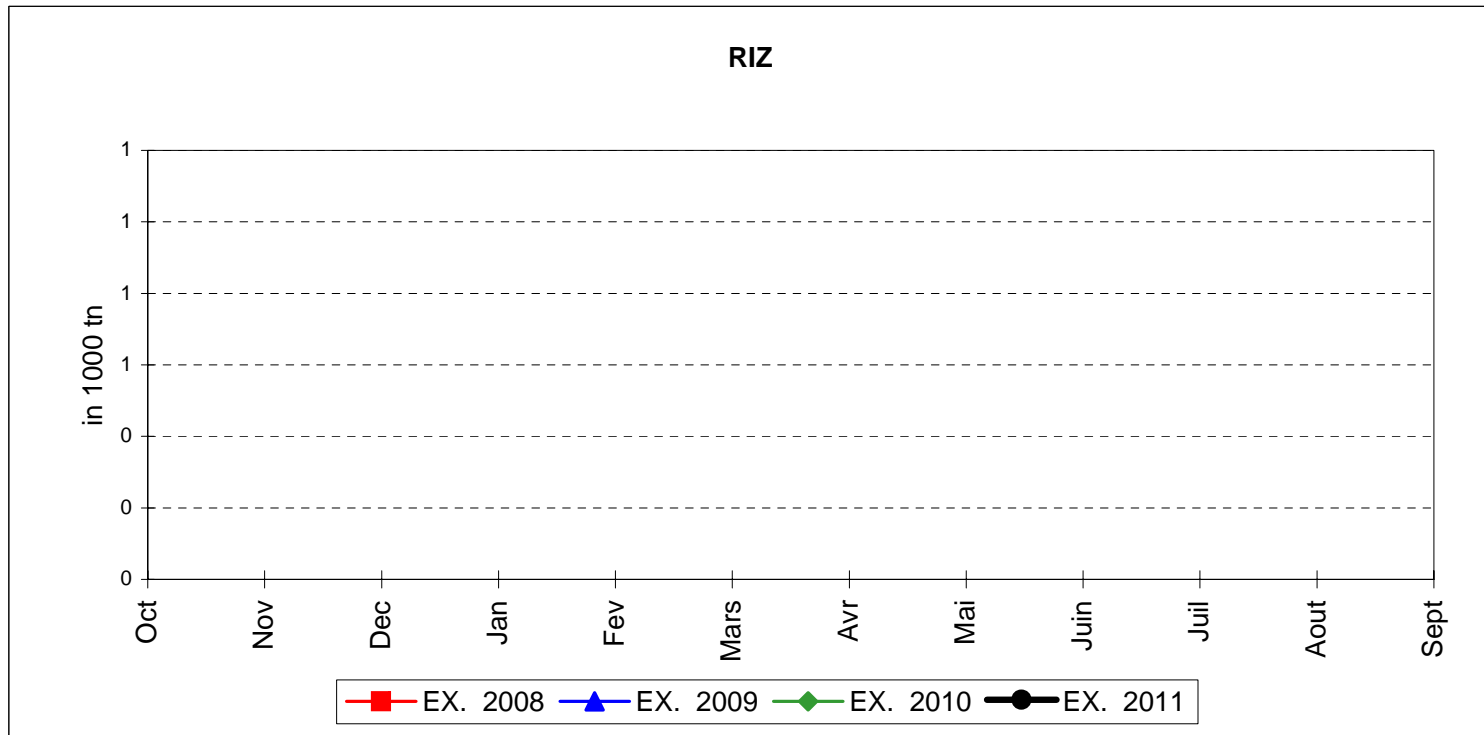
### MAIS



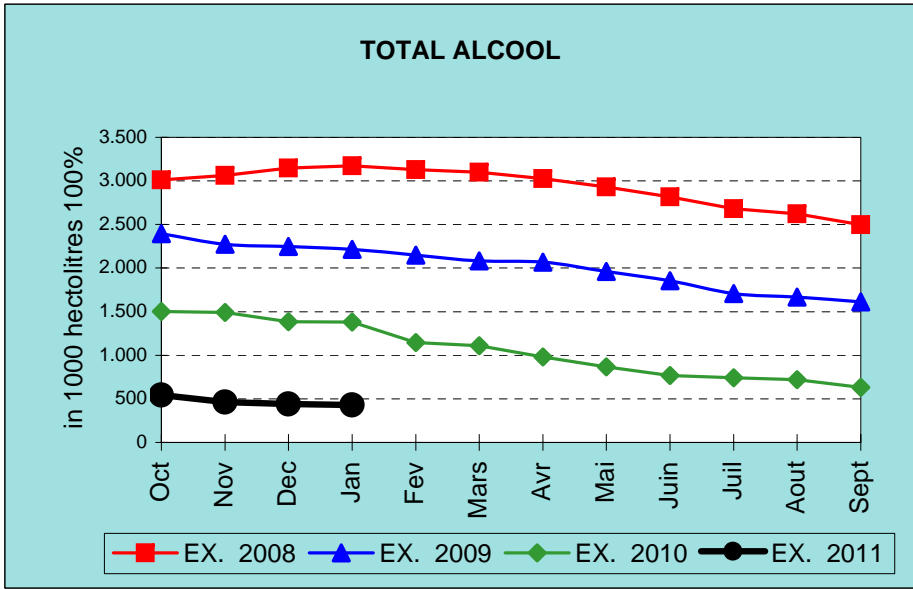
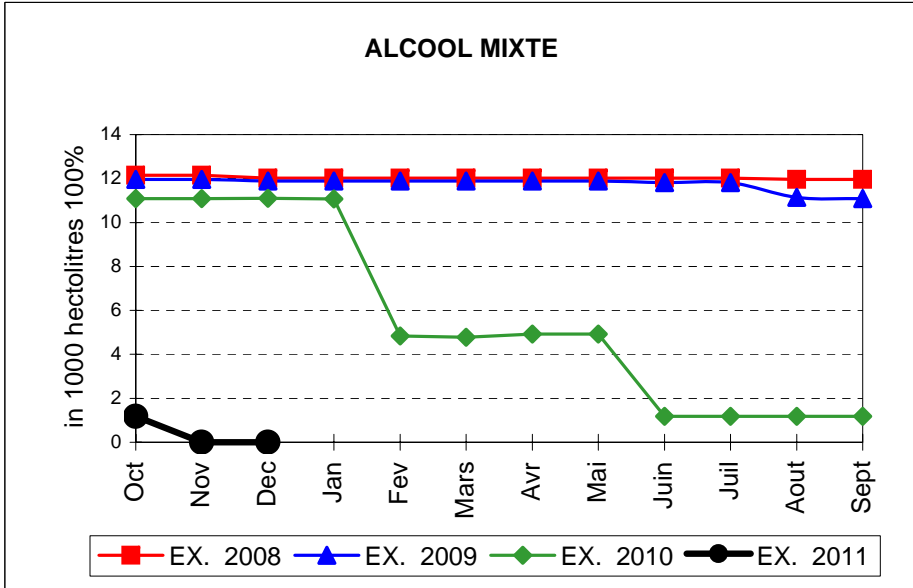
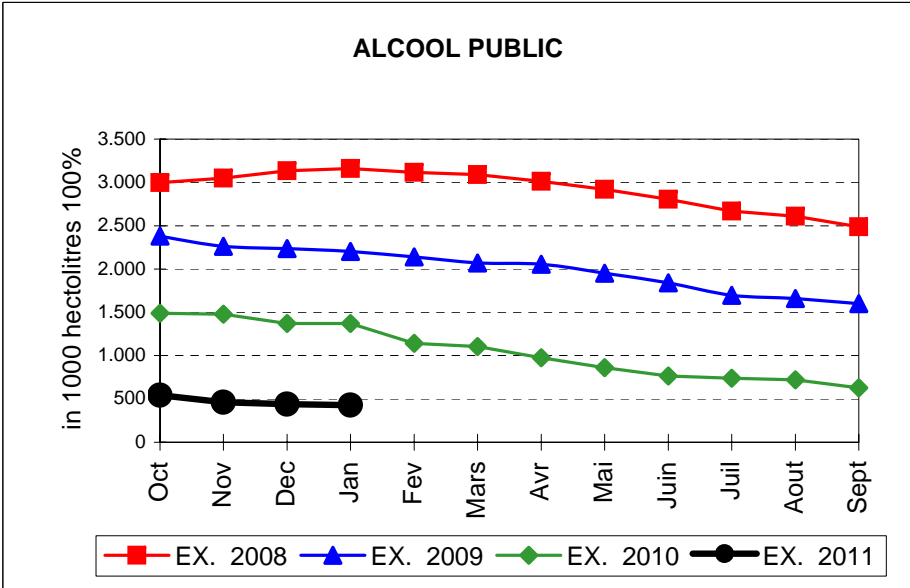
### TOTAL CEREALES



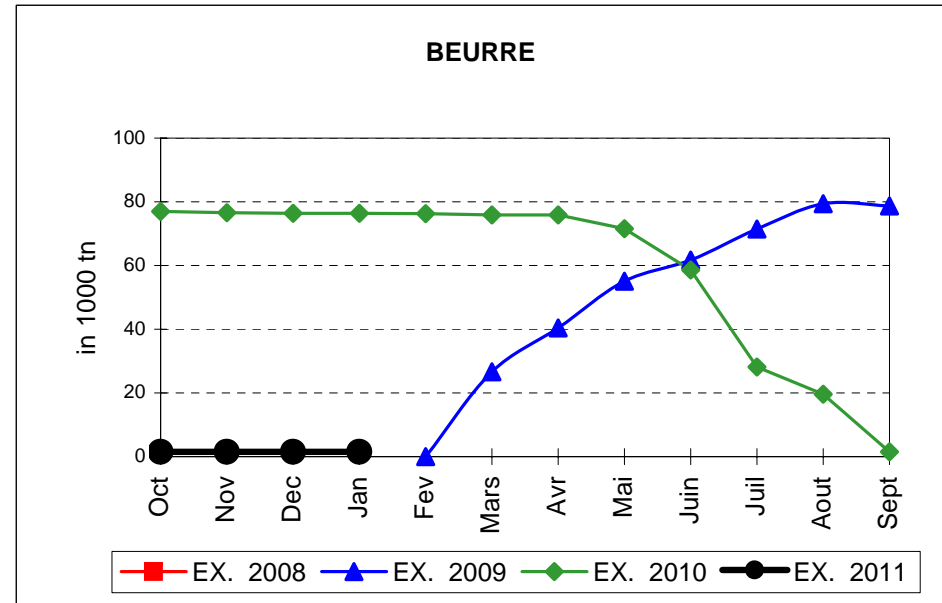
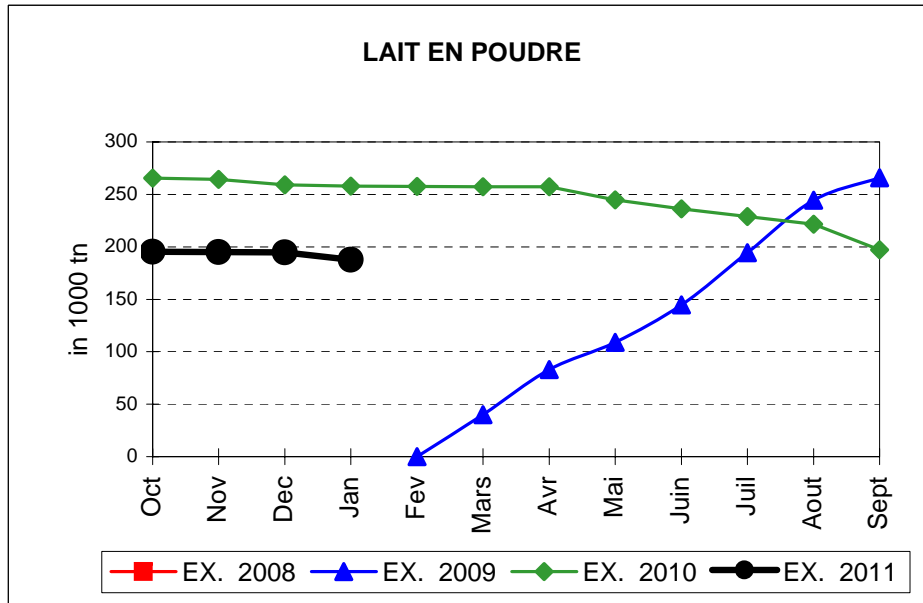
## EVOLUTION IN QUANTITIES OF PUBLIC INTERVENTION STOCKS



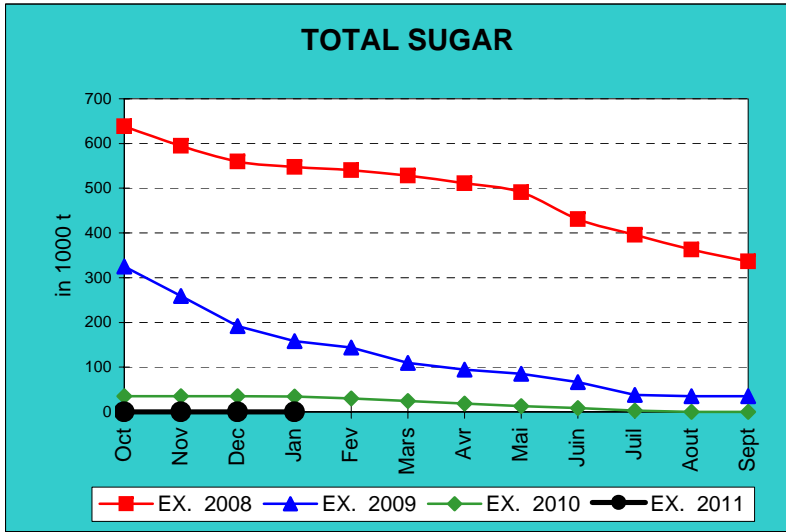
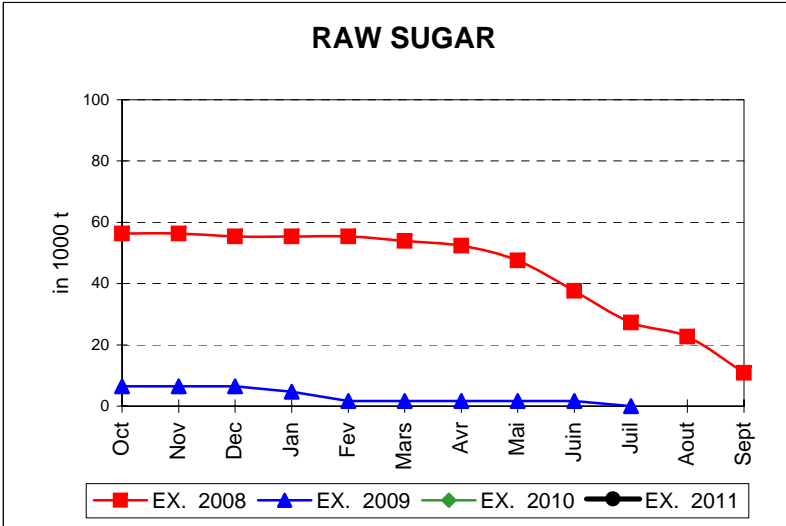
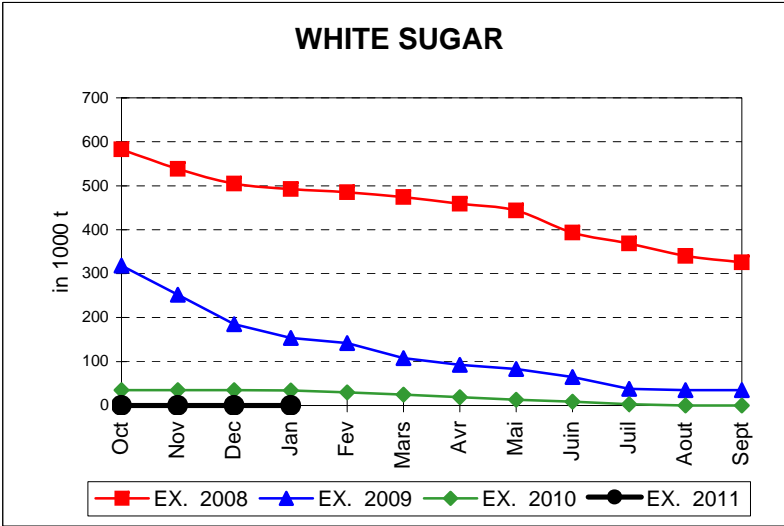
# EVOLUTION IN QUANTITIES OF PUBLIC INTERVENTION STOCKS



## EVOLUTION IN QUANTITIES OF PUBLIC INTERVENTION STOCKS



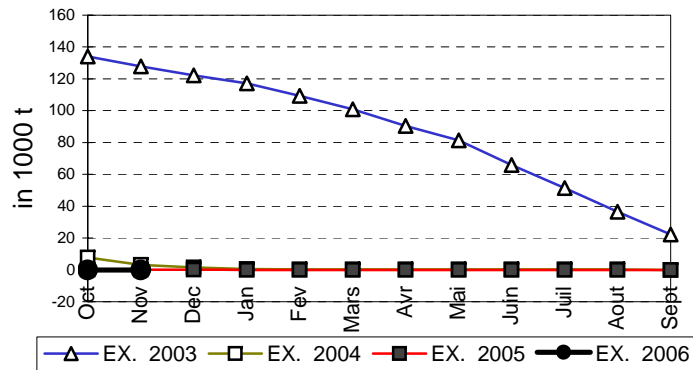
# EVOLUTION IN QUANTITIES OF PUBLIC INTERVENTION STOCKS



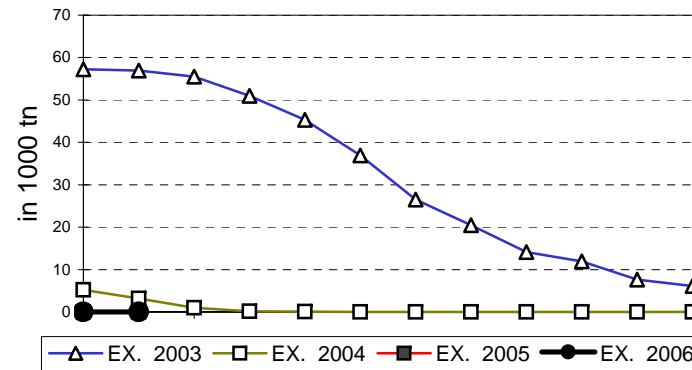


## EVOLUTION IN QUANTITIES OF PUBLIC INTERVENTION STOCKS

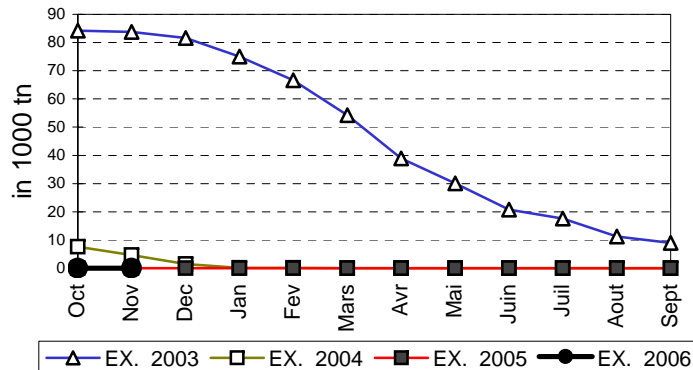
### VIANDE BOVINE CARCASSES



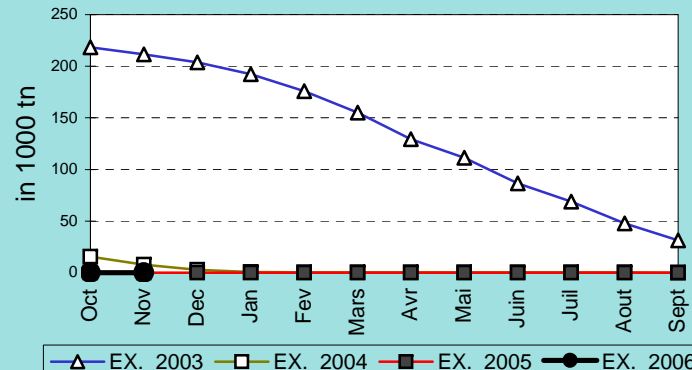
### VIANDE BOVINE DESOSSEE



### VIANDE DESOSSEE EN EQUIVALENT CARCASSES



### TOTAL VIANDE EN EQUIVALENT CARCASSES



## COMPARED WITH PREVIOUS MONTH

EU TOTAL	31-ene-11		31-dic-10		CHANGE IN QTY		CHANGE IN VALUE	
	QUANTITY (tn or hl)	VALUE (in Euro)	QUANTITY (tn or hl)	VALUE (In Euro)	ABSOLUTE (tn or hl)	%	ABSOLUTE (in Euro)	%
CLICK TOTALS FOR GRAPHICS	(a)	(b)	(c)	(d)	(e)=(a)-(c)	(f)=(e)/(c)*%	(g)=(b)-(d)	(h)=(g)/(d)*%
Blé panifiable	147.916	14.982.173	201.805	20.409.382	-53.889	-27%	-5.427.210	-27%
Orge	4.382.889	445.090.061	5.150.531	522.760.194	-767.642	-15%	-77.670.133	-15%
Seigle								
Sorgho								
Mais			0	0	0	-100%	0	-100%
<b>TOTAL CEREALES</b>	<b>4.530.805</b>	<b>460.072.234</b>	<b>5.352.336</b>	<b>543.169.577</b>	<b>-821.531</b>	<b>-15%</b>	<b>-83.097.343</b>	<b>-15%</b>
<b>TOTAL RIZ</b>								
Alcool Public	428.890	14.583.609	440.172	14.967.320	-11.282	-3%	-383.711	-3%
Alcool Mixte								
<b>TOTAL ALCOOL (HL 100%)</b>	<b>428.890</b>	<b>14.583.609</b>	<b>440.172</b>	<b>14.967.320</b>	<b>-11.282</b>	<b>-3%</b>	<b>-383.711</b>	<b>-3%</b>
LEP	187.836	280.144.991	194.803	290.529.260	-6.968	-4%	-10.384.269	-4%
Beurre	1.544	3.341.537	1.544	3.341.537				
<b>TOTAL LAIT ET BEURRE</b>	<b>189.380</b>	<b>283.486.528</b>	<b>196.348</b>	<b>293.870.797</b>	<b>-6.968</b>	<b>-4%</b>	<b>-10.384.269</b>	<b>-4%</b>
Sucre blanc	9	3.052	9	3.052				
Sucre brut								
<b>TOTAL SUCRE</b>	<b>9</b>	<b>3.052</b>	<b>9</b>	<b>3.052</b>				
Bov. carc.								
Bov. des.								
Eq. carc.								
<b>TOTAL EQ. CARCASSES</b>								
<b>GRAND TOTAL</b>		<b>758.145.422</b>		<b>852.010.745</b>			<b>-93.865.323</b>	<b>-11%</b>

SOURCE : The declarations of the Member States before controls.

## COMPARED WITH PREVIOUS YEAR

EU TOTAL	31-ene-11		31-ene-10		CHANGE IN QTY		CHANGE IN VALUE	
	QUANTITY (tn or hl)	VALUE (in Euro)	QUANTITY (tn or hl)	VALUE (In Euro)	ABSOLUTE (tn or hl)	%	ABSOLUTE (in Euro)	%
CLICK TOTALS FOR GRAPHICS	(a)	(b)	(c)	(d)	(e)=(a)-(c)	(f)=(e)/(c)*%	(g)=(b)-(d)	(h)=(g)/(d)*%
<b>Blé panifiable</b>	147.916	14.982.173	130.868	13.531.746	17.048	13%	1.450.427	11%
<b>Orge</b>	4.382.889	445.090.061	2.455.702	246.708.891	1.927.187	78%	198.381.170	80%
<b>Seigle</b>								
<b>Sorgho</b>			501	50.792	-501	-100%	-50.792	-100%
<b>Mais</b>			554.144	56.310.301	-554.144	-100%	-56.310.301	-100%
<b>TOTAL CEREALES</b>	<b>4.530.805</b>	<b>460.072.234</b>	<b>3.141.216</b>	<b>316.601.730</b>	<b>1.389.589</b>	<b>44%</b>	<b>143.470.504</b>	<b>45%</b>
<b>TOTAL RIZ</b>								
<b>Alcool Public</b>	428.890	14.583.609	1.370.855	50.834.566	-941.965	-69%	-36.250.957	-71%
<b>Alcool Mixte</b>			11.074	180.531	-11.074	-100%	-180.531	-100%
<b>TOTAL ALCOOL (HL 100%)</b>	<b>428.890</b>	<b>14.583.609</b>	<b>1.381.929</b>	<b>51.015.098</b>	<b>-953.039</b>	<b>-69%</b>	<b>-36.431.489</b>	<b>-71%</b>
<b>LEP</b>	187.836	280.144.991	257.970	384.913.692	-70.135	-27%	-104.768.702	-27%
<b>Beurre</b>	1.544	3.341.537	76.352	166.306.341	-74.808	-98%	-162.964.804	-98%
<b>TOTAL LAIT ET BEURRE</b>	<b>189.380</b>	<b>283.486.528</b>	<b>334.322</b>	<b>551.220.033</b>	<b>-144.942</b>	<b>-43%</b>	<b>-267.733.505</b>	<b>-49%</b>
<b>Sucre blanc</b>	9	3.052	34.080	10.975.053	-34.071	-100%	-10.972.001	-100%
<b>Sucre brut</b>								
<b>TOTAL SUCRE</b>	<b>9</b>	<b>3.052</b>	<b>34.080</b>	<b>10.975.053</b>	<b>-34.071</b>	<b>-100%</b>	<b>-10.972.001</b>	<b>-100%</b>
<b>Bov. carc.</b>								
<b>Bov. des.</b>								
<b>Eq. carc.</b>								
<b>TOTAL EQ. CARCASSES</b>								
<b>GRAND TOTAL</b>		<b>758.145.422</b>		<b>929.811.914</b>			<b>-171.666.491</b>	<b>-18%</b>

SOURCE :

The declarations of the Member States before controls.

THE PUBLIC STORAGE FLASH REPORT AS AT						31-ene-11			
ESPAÑA									
PRODUCTS	YEAR-TO-DATE		OPENING BALANCE		CHANGE IN QTY		CHANGE IN VALUE		
	QUANTITY (in tonnes or hl) (a)	VALUE (in Euro) (b)	QUANTITY (in tonnes or hl) (c)	VALUE (in Euro) (d)	ABSOLUTE (in tonnes or hl) (e)=(a)-(c)	% (f)=(e)/(c)*% (g)	ABSOLUTE (in Euro) (h)=(b)-(d)	% (i)=(g)/(d)*% (i)	
Ble panifiable									
Orge									
Seigle									
Sorgho									
Mais									
<b>TOTAL CEREALES</b>									
<b>RIZ</b>									
Alcool Public	234.865	7.987.759	373.725	12.711.227	-138.860	-37%	-4.723.468	-37%	
Alcool Mixte									
<b>TOT. ALCOOL (HL)</b>	<b>234.865</b>	<b>7.987.759</b>	<b>373.725</b>	<b>12.711.227</b>	<b>-138.860</b>	<b>-37%</b>	<b>-4.723.468</b>	<b>-37%</b>	
LEP									
Beurre									
<b>TOTAL L &amp; B</b>									
Sucre Blanc									
Sucre Brut									
<b>TOTAL SUCRE</b>									
Bov. carc.									
Bov. des.									
Eq. carc.									
<b>TOTAL EQ. CARC.</b>									
<b>GRAND TOTAL</b>		<b>7.987.759</b>		<b>12.711.227</b>			<b>-4.723.468</b>	<b>-37%</b>	

31-ene-11

