

CHOOSE COUNTRY

EU TOTAL	YEAR-TO-DATE		OPENING BALANCE (1)		CHANGE IN QTY		CHANGE IN VALUE	
	QUANTITY (tn or hl)	VALUE (in Euro)	QUANTITY (tn or hl)	VALUE (In Euro)	ABSOLUTE (tn or hl)	%	ABSOLUTE (in Euro)	%
CLICK TOTALS FOR GRAPHICS	(a)	(b)	(c)	(d)	(e)=(a)-(c)	(f)=(e)/(c)*%	(g)=(b)-(d)	(h)=(g)/(d)*%
Blé panifiable	164.829	17.006.468	76.703	7.911.093	88.125	115%	9.095.375	115%
Orge	3.039.505	306.846.410	925.385	94.445.665	2.114.120	228%	212.400.745	225%
Seigle								
Sorgho	279	28.232	502	50.812	-223	-44%	-22.580	-44%
Mais	554.144	56.310.301	556.111	56.510.040	-1.967	0%	-199.739	0%
TOTAL CEREALES	3.758.756	380.191.411	1.558.701	158.917.609	2.200.056	141%	221.273.801	139%
TOTAL RIZ								
Alcool Public	1.141.288	42.340.223	1.600.049	59.312.261	-458.761	-29%	-16.972.038	-29%
Alcool Mixte	4.839	71.046	11.067	180.503	-6.228	-56%	-109.458	-61%
TOTAL ALCOOL (HL 100%)	1.146.127	42.411.269	1.611.116	59.492.764	-464.989	-29%	-17.081.495	-29%
LEP	257.668	384.460.538	268.527	400.661.815	-10.859	-4%	-16.201.277	-4%
Beurre	76.286	166.162.631	78.688	171.396.018	-2.402	-3%	-5.233.387	-3%
TOTAL LAIT ET BEURRE	333.954	550.623.169	347.215	572.057.832	-13.261	-4%	-21.434.664	-4%
Sucre Blanc	29.978	9.693.652	34.080	10.975.054	-4.103	-12%	-1.281.402	-12%
Sucre Brut								
TOTAL SUCRE	29.978	9.693.652	34.080	10.975.054	-4.103	-12%	-1.281.402	-12%
Bov. carc.								
Bov. des.								
Eq. carc.								
TOTAL EQ. CARCASSES								
GRAND TOTAL		982.919.500		801.443.260			181.476.240	23%

SOURCE : The declarations of the Member States before controls.

(1) Period 13/2009 annual declaration

quantities are expressed in
tonnes (alcohol in hl 100%)

ACCOUNTING VALUE OF THE PUBLIC INTERVENTION STOCKS AS AT :
(BEFORE THE COMPLEMENTARY DEPRECIATION)

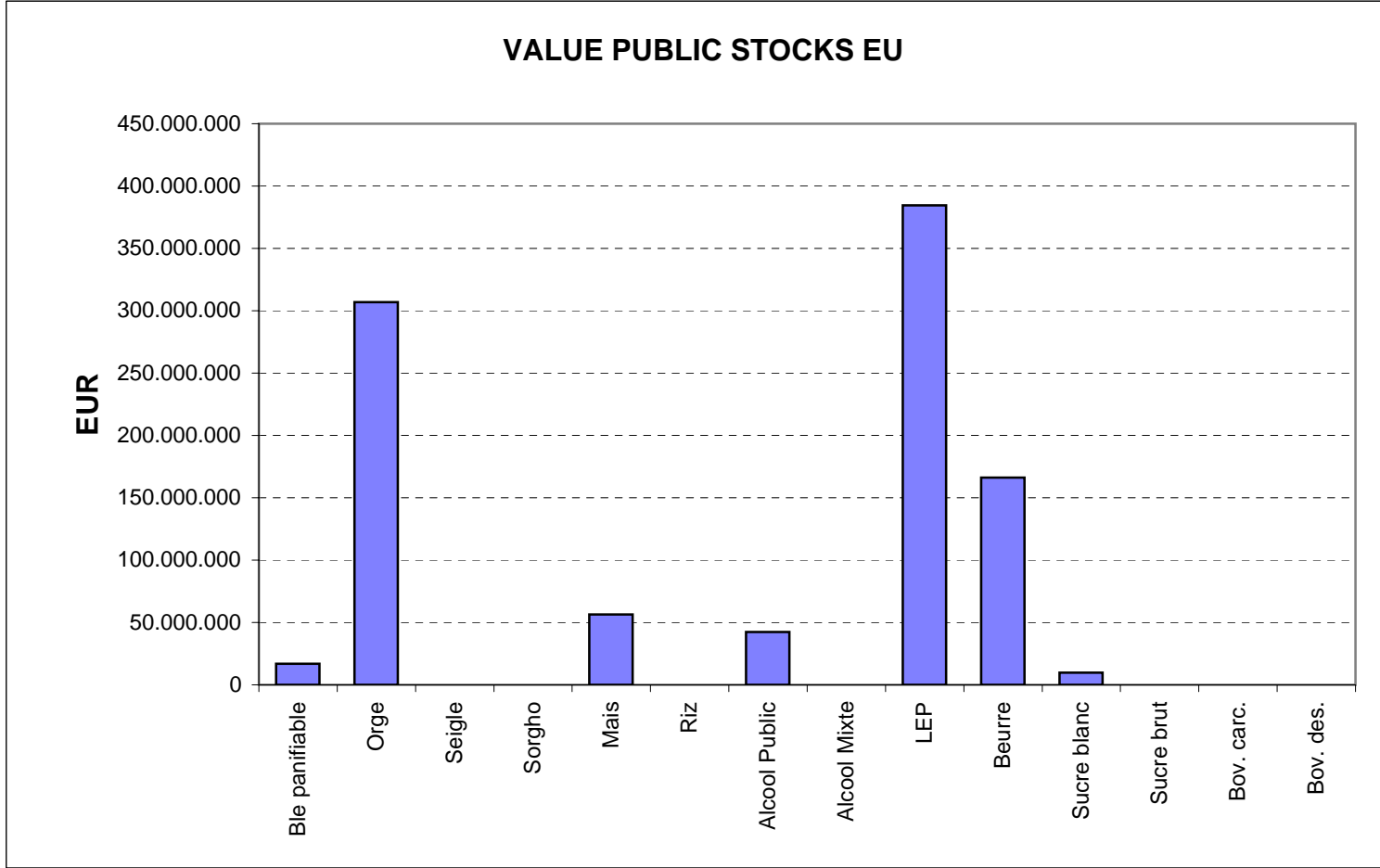
28-feb-10

AGRI I.4

J. FLORET tel. 53236

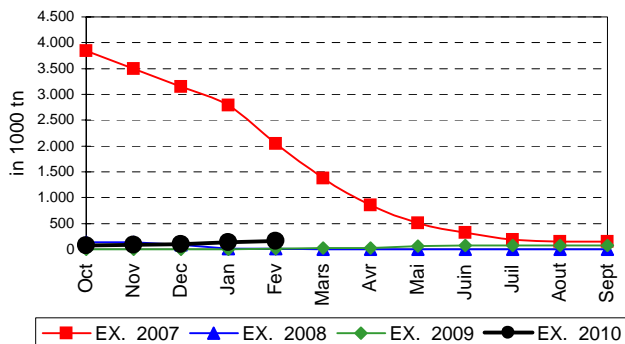
Produits		BE	BG	CZ	DK	DE	EE	IE	EL	ES	FR	IT	CY	LV	LT	LU	HU	MT	NL	OS	PL	PO	RO	SI	SK	FIN	SE	UK	TOTAL		
BLE PANIF	quant.		3.013	85.054											91	49.488				2.003					22.205	2.976			164.829		
	valeur		305.224	8.932.338											8.867	5.006.183					202.623					2.250.228	301.004			17.006.468	
ORGE	quant.	9.345	10.527	284.454	9.641	1.127.650	55.086				204.865			21.366	171.974		253.782			6.852	283.069				60.608	403.427	92.555	44.305	3.039.505		
	valeur	928.232	1.085.639	29.981.399	963.488	112.719.896	5.533.973				20.687.241			2.151.794	17.271.312		25.715.737			694.224	28.326.701				6.189.912	40.806.666	9.341.552	4.448.645	306.846.410		
SEIGLE	quant.																														
	valeur																														
SORGHO	quant.																279													279	
	valeur																28.232													28.232	
MAIS	quant.																443.740								110.404					554.144	
	valeur																44.950.812								11.359.489					56.310.301	
TOT.CER	quant.	9.345	13.540	369.507	9.641	1.127.650	55.086				204.865			21.366	172.065		747.288			6.852	285.072				193.217	406.403	92.555	44.305	3.758.756		
RIZ	quant.																														
ALC.P.	quant.								60.269	548.747	159.708	238.158	7.219				55.056					72.130								1.141.288	
	valeur								2.229.366	20.424.380	5.910.808	8.804.706	266.516				2.037.065					2.667.383								42.340.223	
ALC.M.	quant.										1.024	3.815																		4.839	
	valeur										4.054	66.992																		71.046	
TOT.ALC.	quant.								60.269	548.747	160.732	241.973	7.219				55.056					72.130								1.146.127	
LEP	quant.	24.122		3.766		63.775	2.634	32.175		1.382	54.754				10.344			19.860		20.549	2.433					1.552	3.614	16.708		257.668	
	valeur	35.721.397		5.932.845		94.890.599	3.768.210	48.065.687		2.105.975	82.036.786				15.503.069			29.689.359		30.469.181	3.642.096					2.324.663	5.412.002	24.898.669		384.460.538	
BEURRE	quant.	3.232		527		9.894	1.153	14.213		9.335	13.082				1.814			11.541		1.901	5.079							4.516		76.286	
	valeur	7.045.295		1.200.445		21.567.767	2.355.675	30.983.201		20.336.764	28.501.536				3.953.467			25.158.335		4.146.093	11.071.712							9.842.340		166.162.631	
TOT.L&B	quant.	27.354		4.293		73.669	3.787	46.388		10.717	67.836				12.157			31.401		22.449	7.512					1.552	3.614	21.224		333.954	
S. BLANC	quant.			2.029				995																						29.978	
	valeur			684.128				289.475																						9.693.652	
S. BRUT	quant.																														
	valeur																														
TOT.SUC	quant.			2.029				995																						29.978	
BOV.QUA	quant.																														
	valeur																														
BOV.DES	quant.																														
	valeur																														
EQ. CARC	quant.																														
TOT.EQ	quant.																														
EU TOTAL	valeur	43.694.924	1.390.863	46.731.155	963.488	229.178.263	11.657.858	79.338.363	2.229.366	42.867.118	137.140.425	17.591.746	266.516	2.151.794	36.736.715	77.738.029	54.847.694	694.224	63.144.598	17.381.191					19.799.630	43.432.333	14.753.554	39.189.654		982.919.500	

PUBLIC INTERVENTION STOCKS

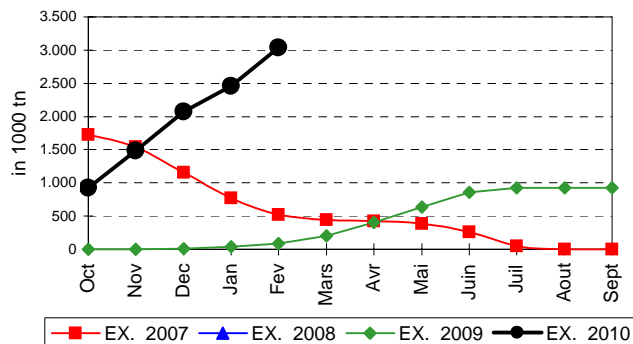


EVOLUTION IN QUANTITIES OF PUBLIC INTERVENTION STOCKS

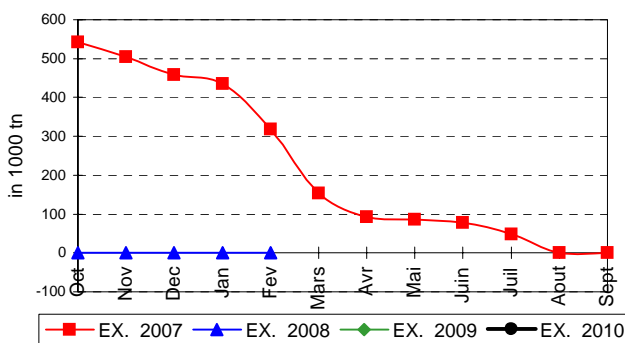
BLE TENDRE PANIFIABLE



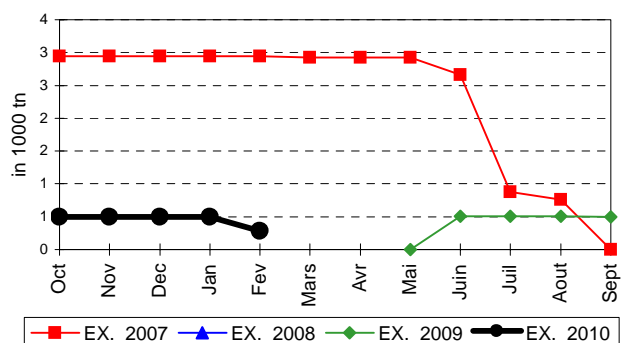
ORGE



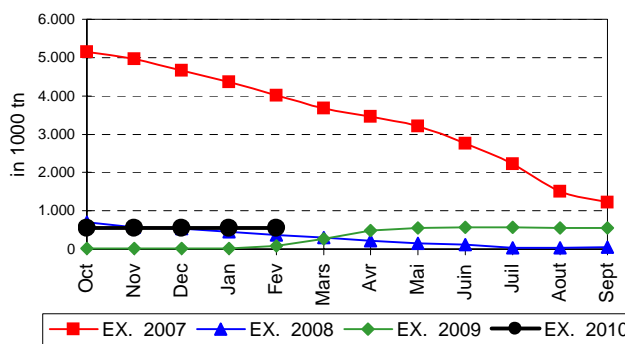
SEIGLE



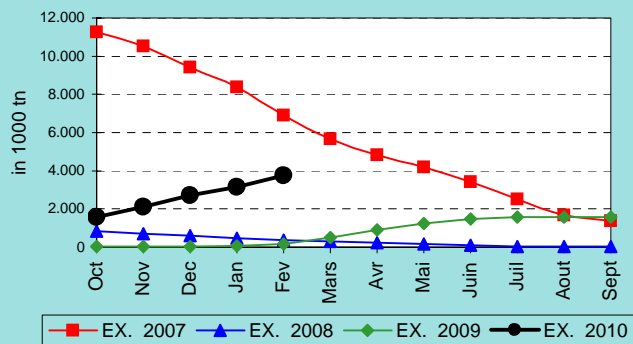
SORGHO



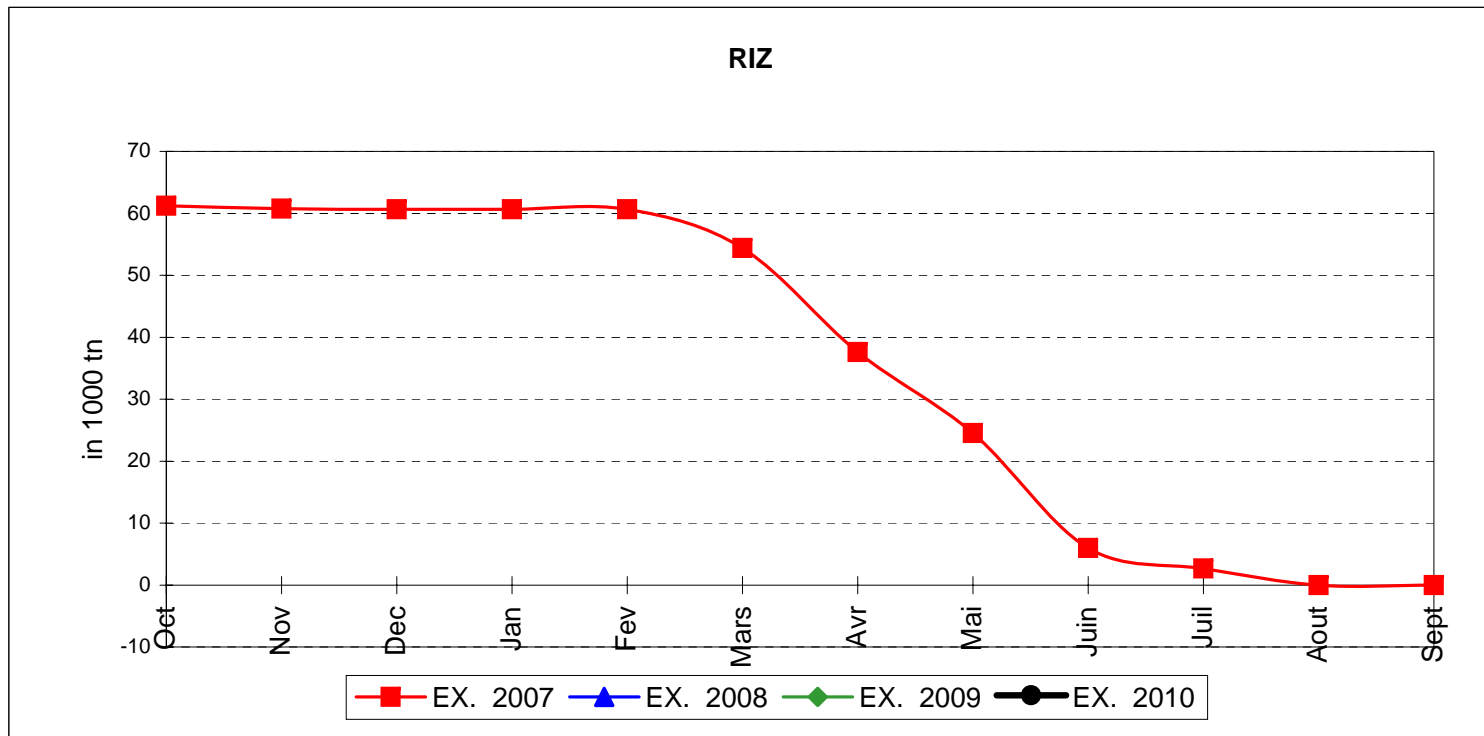
MAIS



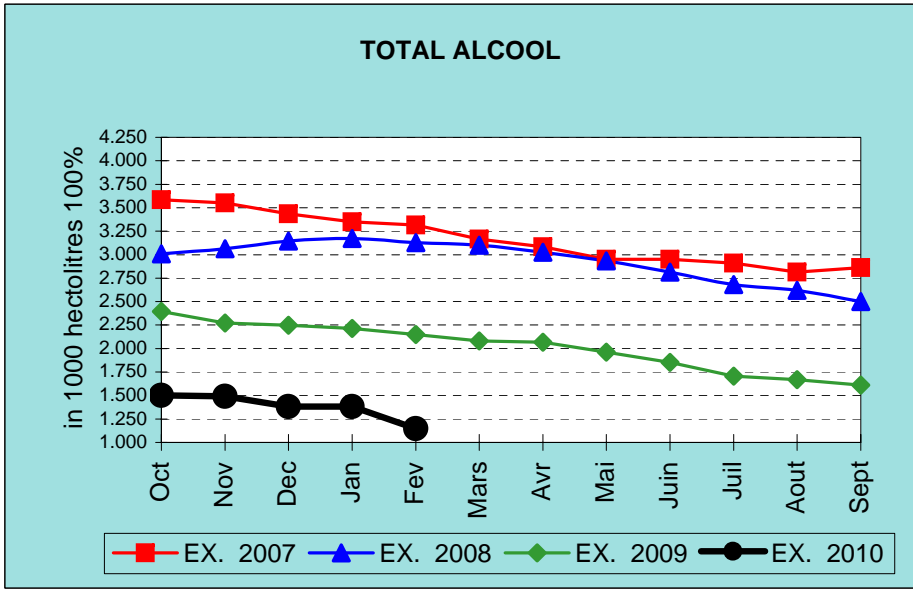
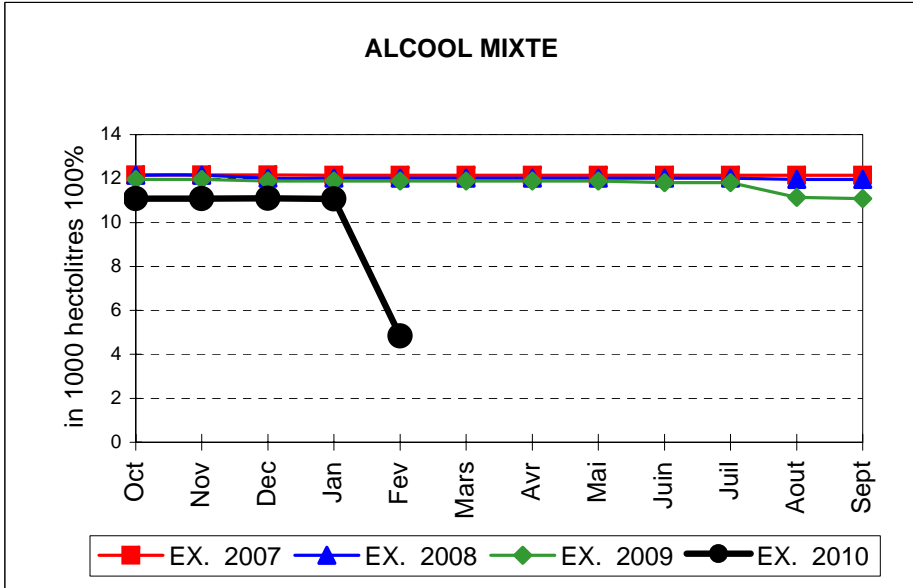
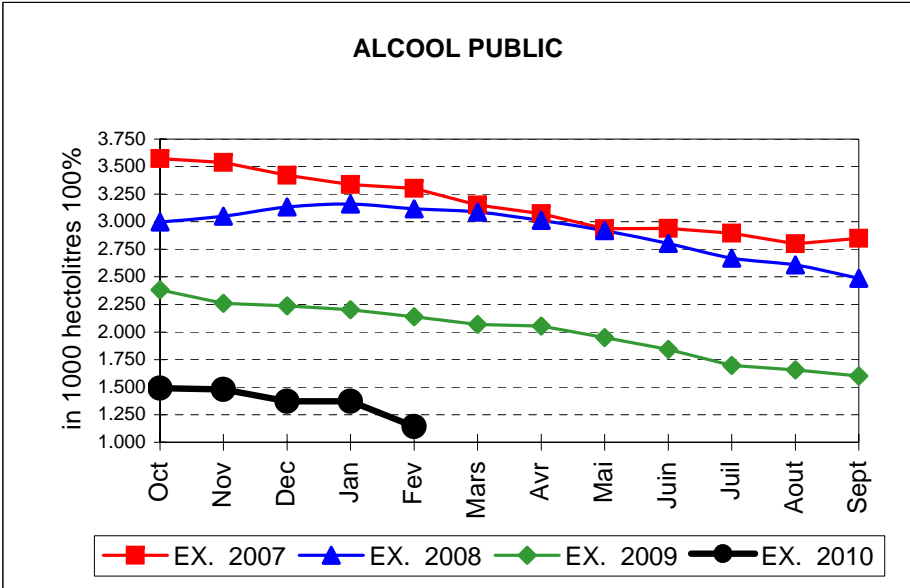
TOTAL CEREALES



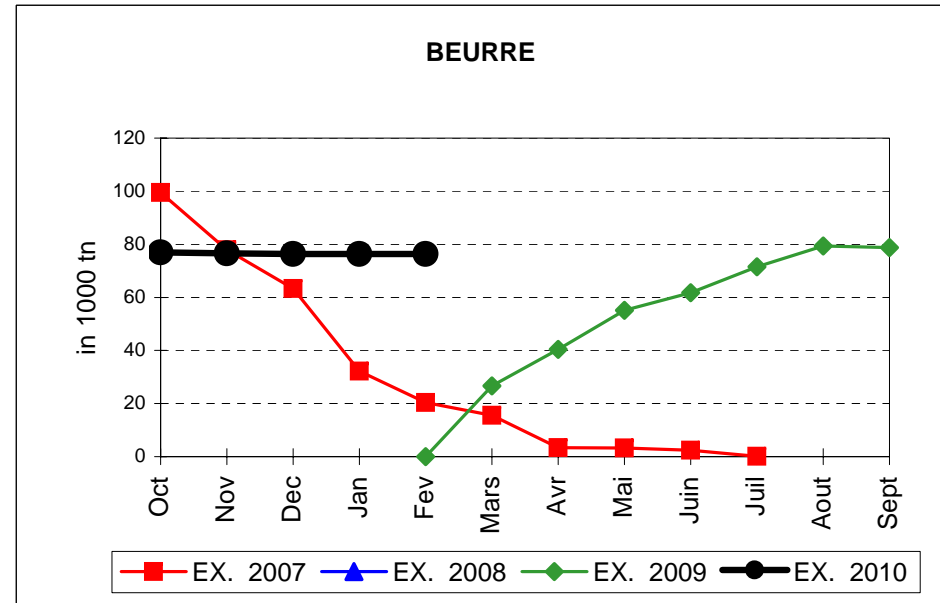
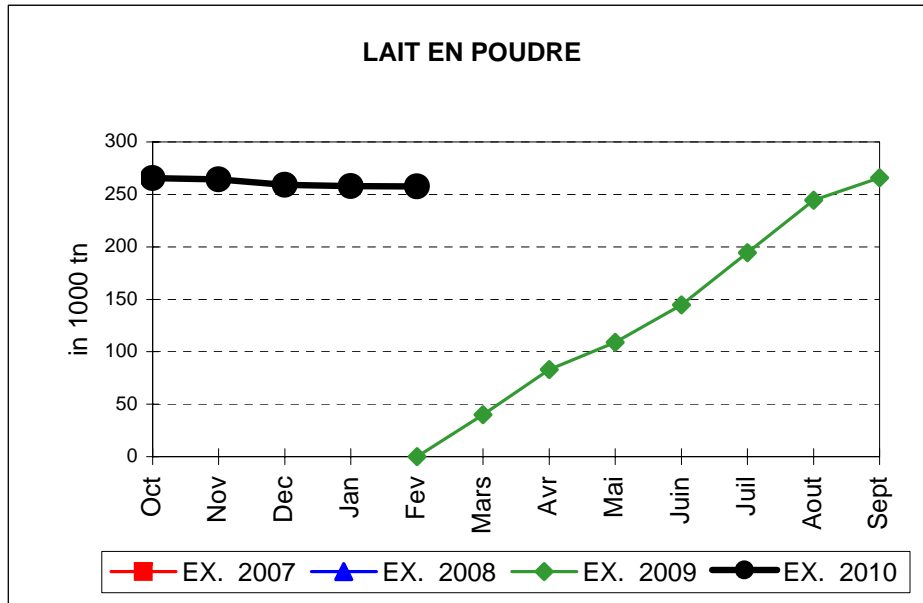
EVOLUTION IN QUANTITIES OF PUBLIC INTERVENTION STOCKS



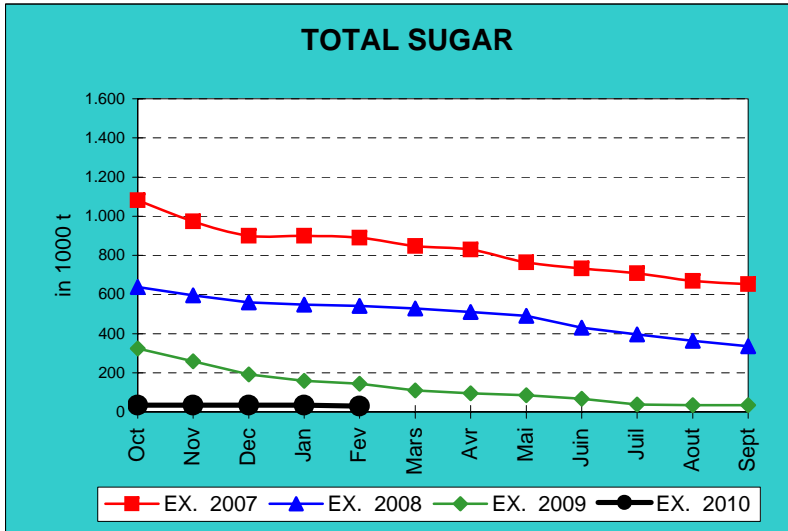
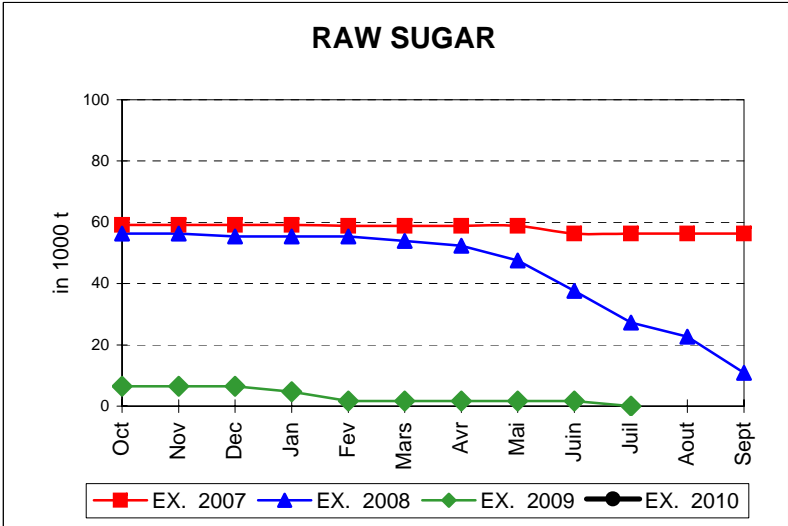
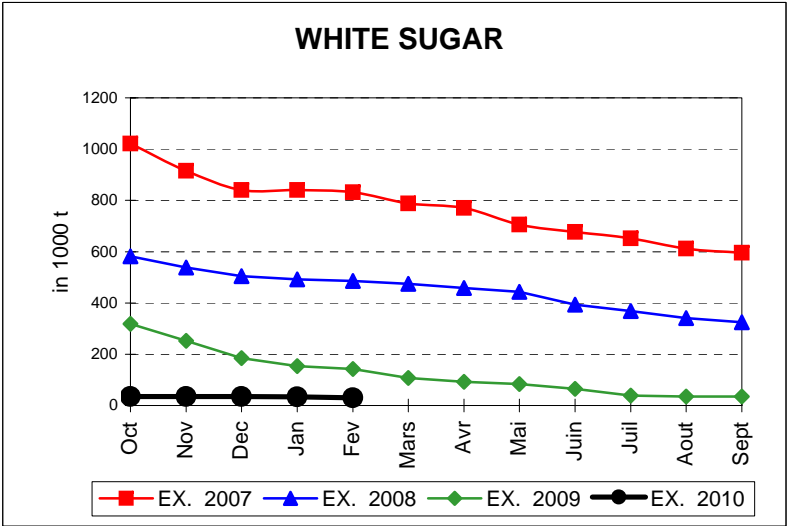
EVOLUTION IN QUANTITIES OF PUBLIC INTERVENTION STOCKS



EVOLUTION IN QUANTITIES OF PUBLIC INTERVENTION STOCKS

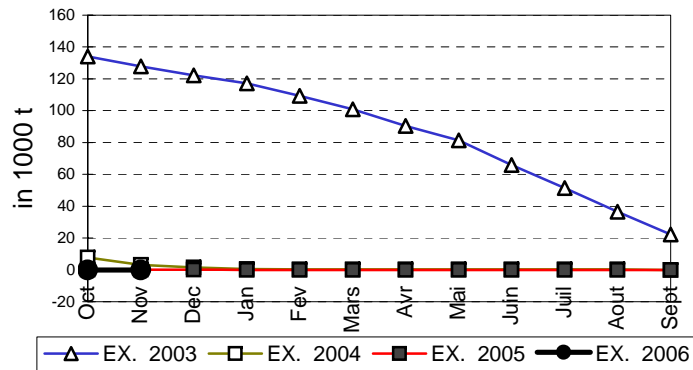


EVOLUTION IN QUANTITIES OF PUBLIC INTERVENTION STOCKS

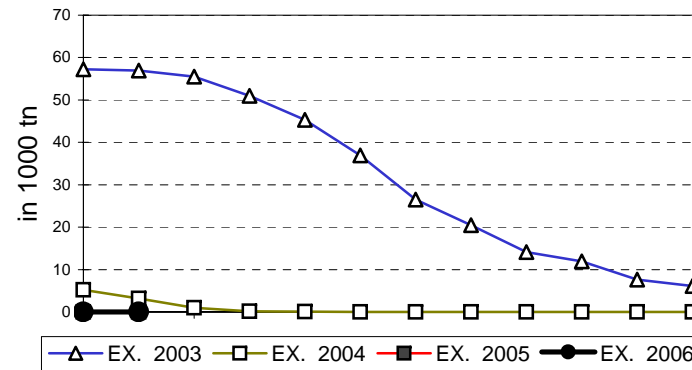


EVOLUTION IN QUANTITIES OF PUBLIC INTERVENTION STOCKS

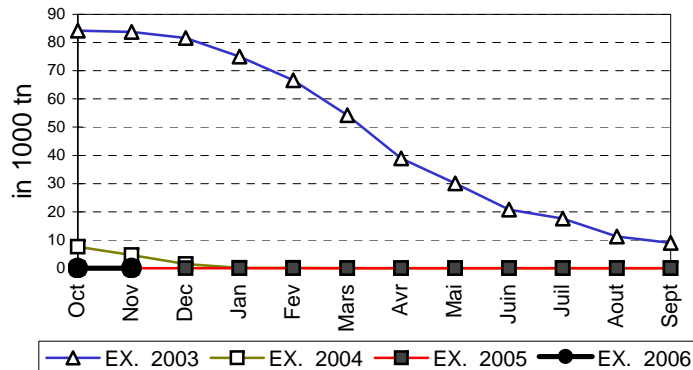
VIANDE BOVINE CARCASSES



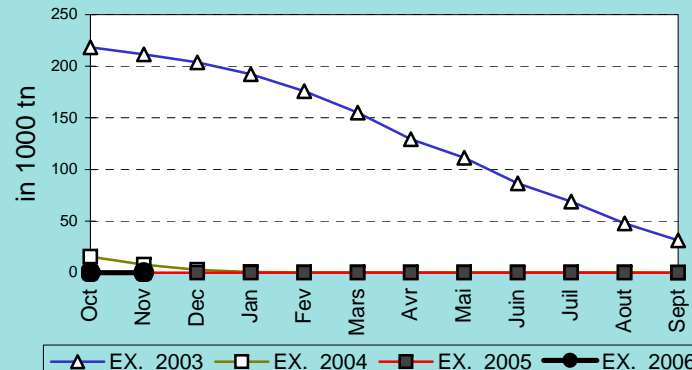
VIANDE BOVINE DESOSSEE



VIANDE DESOSSEE EN EQUIVALENT CARCASSES



TOTAL VIANDE EN EQUIVALENT CARCASSES



COMPARED WITH PREVIOUS MONTH

EU TOTAL	28-feb-10		31-ene-10		CHANGE IN QTY		CHANGE IN VALUE	
	QUANTITY (tn or hl)	VALUE (in Euro)	QUANTITY (tn or hl)	VALUE (In Euro)	ABSOLUTE (tn or hl)	%	ABSOLUTE (in Euro)	%
CLICK TOTALS FOR GRAPHICS	(a)	(b)	(c)	(d)	(e)=(a)-(c)	(f)=(e)/(c)*%	(g)=(b)-(d)	(h)=(g)/(d)*%
Blé panifiable	164.829	17.006.468	130.868	13.531.746	33.960	26%	3.474.722	26%
Orge	3.039.505	306.846.410	2.455.702	246.708.891	583.803	24%	60.137.519	24%
Seigle								
Sorgho	279	28.232	501	50.792	-223	-44%	-22.560	-44%
Mais	554.144	56.310.301	554.144	56.310.301				
TOTAL CEREALES	3.758.756	380.191.411	3.141.216	316.601.730	617.540	20%	63.589.681	20%
TOTAL RIZ								
Alcool Public	1.141.288	42.340.223	1.370.855	50.834.566	-229.567	-17%	-8.494.343	-17%
Alcool Mixte	4.839	71.046	11.074	180.531	-6.235	-56%	-109.486	-61%
TOTAL ALCOOL (HL 100%)	1.146.127	42.411.269	1.381.929	51.015.098	-235.802	-17%	-8.603.829	-17%
LEP	257.668	384.460.538	257.970	384.913.692	-302	0%	-453.155	0%
Beurre	76.286	166.162.631	76.352	166.306.341	-66	0%	-143.710	0%
TOTAL LAIT ET BEURRE	333.954	550.623.169	334.322	551.220.033	-368	0%	-596.864	0%
Sucre blanc	29.978	9.693.652	34.080	10.975.053	-4.103	-12%	-1.281.401	-12%
Sucre brut								
TOTAL SUCRE	29.978	9.693.652	34.080	10.975.053	-4.103	-12%	-1.281.401	-12%
Bov. carc.								
Bov. des.								
Eq. carc.								
TOTAL EQ. CARCASSES								
GRAND TOTAL		982.919.500		929.811.914			53.107.586	6%

SOURCE : The declarations of the Member States before controls.

COMPARED WITH PREVIOUS YEAR

EU TOTAL	28-feb-10		28-feb-09		CHANGE IN QTY		CHANGE IN VALUE	
	QUANTITY (tn or hl)	VALUE (in Euro)	QUANTITY (tn or hl)	VALUE (In Euro)	ABSOLUTE (tn or hl)	%	ABSOLUTE (in Euro)	%
CLICK TOTALS FOR GRAPHICS	(a)	(b)	(c)	(d)	(e)=(a)-(c)	(f)=(e)/(c)*%	(g)=(b)-(d)	(h)=(g)/(d)*%
Blé panifiable	164.829	17.006.468	17.533	1.989.865	147.295	840%	15.016.603	755%
Orge	3.039.505	306.846.410	86.684	9.005.220	2.952.821	3406%	297.841.190	3307%
Seigle								
Sorgho	279	28.232			279		28.232	
Mais	554.144	56.310.301	77.087	7.751.865	477.057	619%	48.558.436	626%
TOTAL CEREALES	3.758.756	380.191.411	181.305	18.746.950	3.577.452	1973%	361.444.461	1928%
TOTAL RIZ								
Alcool Public	1.141.288	42.340.223	2.138.239	91.247.991	-996.951	-47%	-48.907.768	-54%
Alcool Mixte	4.839	71.046	11.894	184.533	-7.055	-59%	-113.488	-61%
TOTAL ALCOOL (HL 100%)	1.146.127	42.411.269	2.150.134	91.432.525	-1.004.007	-47%	-49.021.256	-54%
LEP	257.668	384.460.538			257.668		384.460.538	
Beurre	76.286	166.162.631			76.286		166.162.631	
TOTAL LAIT ET BEURRE	333.954	550.623.169			333.954		550.623.169	
Sucre blanc	29.978	9.693.652	141.948	47.082.120	-111.970	-79%	-37.388.468	-79%
Sucre brut			1.661	401.616	-1.661	-100%	-401.616	-100%
TOTAL SUCRE	29.978	9.693.652	143.609	47.483.735	-113.631	-79%	-37.790.084	-80%
Bov. carc.								
Bov. des.								
Eq. carc.								
TOTAL EQ. CARCASSES								
GRAND TOTAL		982.919.500		157.663.210			825.256.290	523%

SOURCE :

The declarations of the Member States before controls.

THE PUBLIC STORAGE FLASH REPORT AS AT									
28-feb-10									
ESPAÑA									
PRODUCTS	YEAR-TO-DATE		OPENING BALANCE		CHANGE IN QTY		CHANGE IN VALUE		
	QUANTITY (in tonnes or hl)	VALUE (in Euro)	QUANTITY (in tonnes or hl)	VALUE (in Euro)	ABSOLUTE (in tonnes or hl)	%	ABSOLUTE (in Euro)	%	
	(a)	(b)	(c)	(d)	(e)=(a)-(c)	(f)=(e)/(c)*%	(g)=(b)-(d)	(h)=(g)/(d)*%	
Ble panifiable									
Orge									
Seigle									
Sorgho									
Mais									
TOTAL CEREALES									
RIZ									
Alcool Public	548.747	20.424.380	574.043	21.365.391	-25.296	-4%	-941.011	-4%	
Alcool Mixte									
TOT. ALCOOL (HL)	548.747	20.424.380	574.043	21.365.391	-25.296	-4%	-941.011	-4%	
LEP	1.382	2.105.975	1.603	2.442.752	-221	-14%	-336.777	-14%	
Beurre	9.335	20.336.764	9.335	20.336.778	-14	0%	-14	0%	
TOTAL L & B	10.717	22.442.739	10.936	22.779.530	-221	-2%	-336.791	-1%	
Sucre Blanc									
Sucre Brut									
TOTAL SUCRE									
Bov. carc.									
Bov. des.									
Eq. carc.									
TOTAL EQ. CARC.									
GRAND TOTAL		42.867.118		44.144.921			-1.277.802	-3%	

28-feb-10

