

CHOOSE COUNTRY

EU TOTAL	YEAR-TO-DATE		OPENING BALANCE (1)		CHANGE IN QTY		CHANGE IN VALUE	
	QUANTITY (tn or hl)	VALUE (in Euro)	QUANTITY (tn or hl)	VALUE (in Euro)	ABSOLUTE (tn or hl)	%	ABSOLUTE (in Euro)	%
CLICK TOTALS FOR GRAPHICS	(a)	(b)	(c)	(d)	(e)=(a)-(c)	(f)=(e)/(c)*%	(g)=(b)-(d)	(h)=(g)/(d)*%
Blé panifiable	147.916	14.982.173	234.577	23.710.769	-86.661	-37%	-8.728.596	-37%
Orge	3.557.584	361.108.306	5.326.162	540.451.972	-1.768.578	-33%	-179.343.666	-33%
Seigle								
Sorgho								
Mais			3.142	318.234	-3.142	-100%	-318.234	-100%
TOTAL CEREALES	3.705.500	376.090.479	5.563.880	564.480.975	-1.858.380	-33%	-188.390.496	-33%
TOTAL RIZ								
Alcool Public	388.719	13.217.378	628.630	21.369.957	-239.911	-38%	-8.152.579	-38%
Alcool Mixte			1.173	4.645	-1.173	-100%	-4.645	-100%
TOTAL ALCOOL (HL 100%)	388.719	13.217.378	629.803	21.374.602	-241.084	-38%	-8.157.225	-38%
LEP	171.140	255.247.580	197.223	294.161.988	-26.083	-13%	-38.914.407	-13%
Beurre	1.435	3.103.957	1.545	3.343.770	-110	-7%	-239.813	-7%
TOTAL LAIT ET BEURRE	172.576	258.351.538	198.769	297.505.758	-26.193	-13%	-39.154.220	-13%
Sucre Blanc			9	3.052	-9	-100%	-3.052	-100%
Sucre Brut								
TOTAL SUCRE			9	3.052	-9	-100%	-3.052	-100%
Bov. carc.								
Bov. des.								
Eq. carc.								
TOTAL EQ. CARCASSES								
GRAND TOTAL		647.659.394		883.364.387			-235.704.993	-27%

SOURCE : The declarations of the Member States before controls.

(1) Period 13/2010 annual declaration

quantities are expressed in
tonnes (alcohol in hl 100%)

ACCOUNTING VALUE OF THE PUBLIC INTERVENTION STOCKS AS AT :
(BEFORE THE COMPLEMENTARY DEPRECIATION)

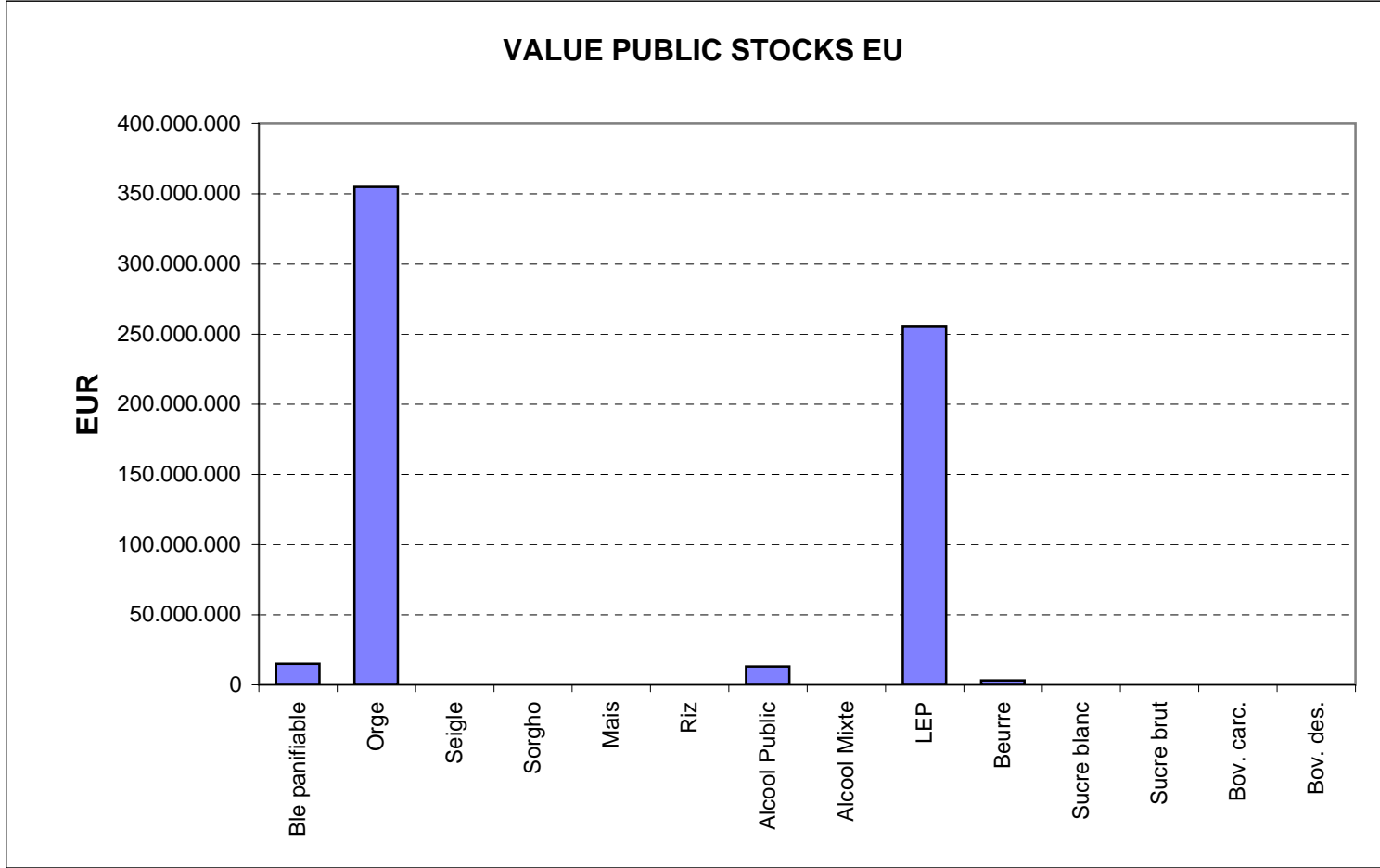
28-feb-11

AGRI I.4

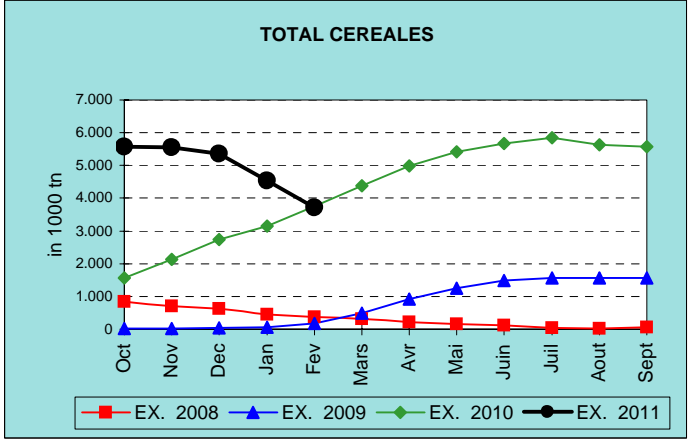
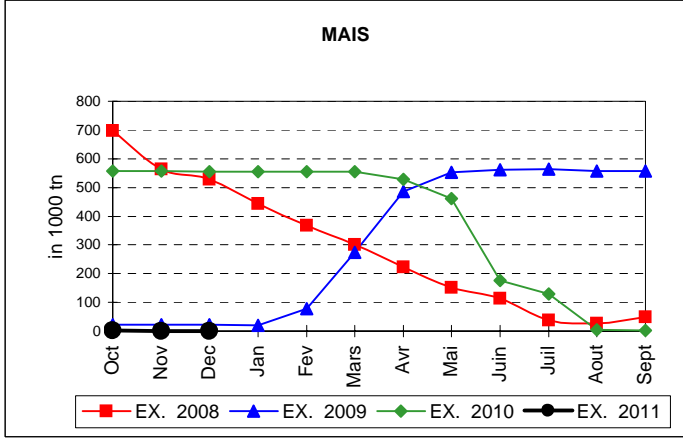
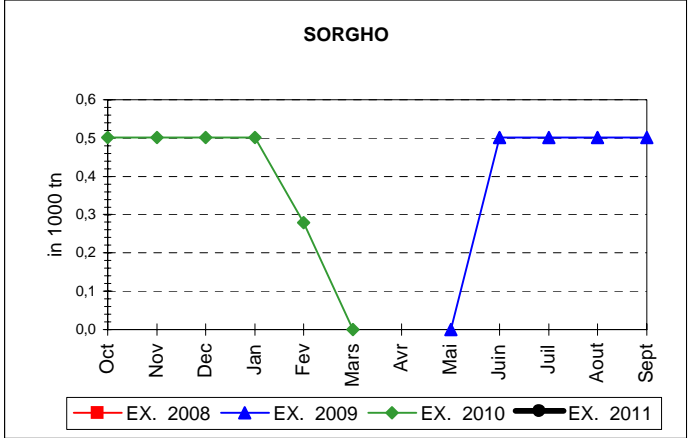
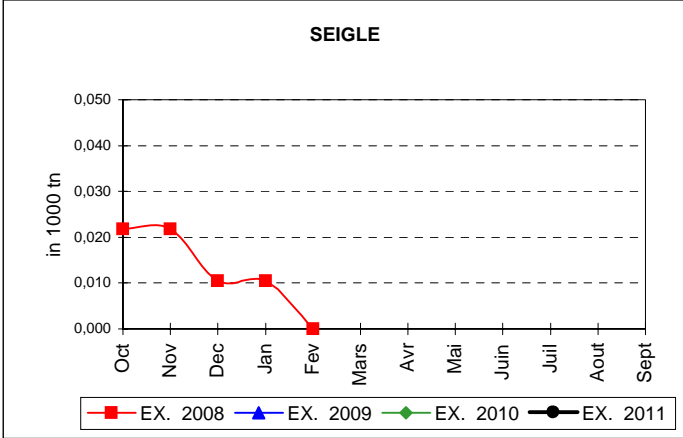
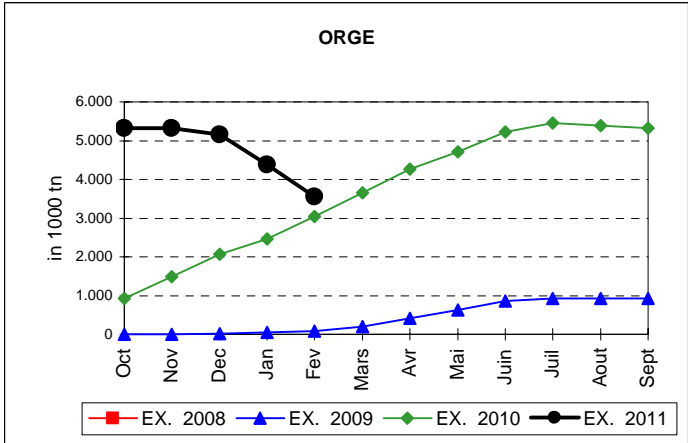
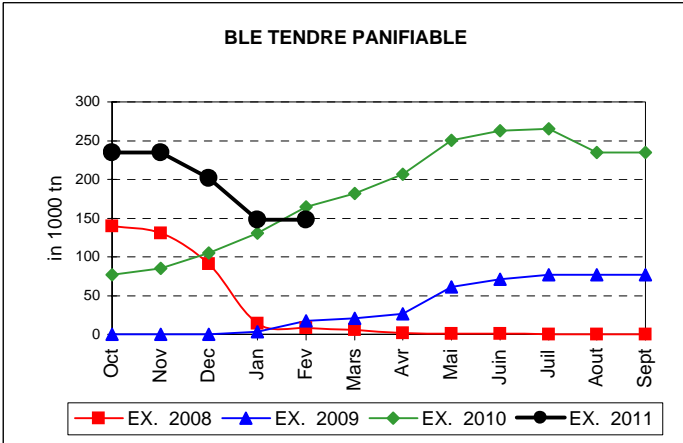
J. FLORET tel. 53236

Produits		BE	BG	CZ	DK	DE	EE	IE	EL	ES	FR	IT	CY	LV	LT	LU	HU	MT	NL	OS	PL	PO	RO	SI	SK	FIN	SE	UK	TOTAL	
BLE PANIF	quant.		3.587	1.978											91	114.583				619					27.059				147.916	
	valeur		355.892	200.255											8.867	11.607.227					62.615					2.747.318				14.982.173
ORGE	quant.	32.267	42.101	185.948	40.218	908.107	34.212				866.479			22.993	60.909	269.608			14.812	331.263			61.433		88.562	348.077	122.005	128.589	3.557.584	
	valeur	3.276.038	4.348.146	19.608.251	4.096.637	91.264.760	3.468.759				88.190.260			2.317.023	6.135.967	27.500.050			1.503.817	33.401.285			6.273.544		9.014.772	35.559.555	12.413.999	12.735.445	361.108.306	
SEIGLE	quant.																													
SORGHO	quant.																													
MAIS	quant.																													
TOT.CER	quant.	32.267	45.687	187.926	40.218	908.107	34.212				866.479			22.993	61.000	384.191				14.812	331.882			61.433	115.622	348.077	122.005	128.589	3.705.500	
RIZ	quant.																													
ALC.P.	quant.								60.181	194.723			7.112			54.697						72.006							388.719	
	valeur								2.046.144	6.622.539			241.520			1.859.702						2.447.473							13.217.378	
ALC.M.	quant.																													
TOT.ALC.	quant.								60.181	194.723			7.112			54.697						72.006							388.719	
LEP	quant.	15.937		2.455		62.611	1.521	32.170			23.392				4.516				10.070		2.597	607				845	521	13.898	171.140	
	valeur	23.600.084		3.868.139		93.158.758	2.176.103	48.058.217			35.048.440				6.768.056				15.053.597		3.850.494	909.158				1.265.533	780.609	20.710.390	255.247.580	
BEURRE	quant.						182								1.254														1.435	
	valeur						371.083								2.732.875														3.103.957	
TOT L&B	quant.	15.937		2.455		62.611	1.703	32.170			23.392				5.769				10.070		2.597	607				845	521	13.898	172.576	
S. BLANC	quant.																													
S. BRUT	quant.																													
TOT. SUC	quant.																													
BOV.QUA	quant.																													
BOV.DES	quant.																													
EQ. CARC	quant.																													
TOT EQ	quant.																													
EU TOTAL	valeur	26.876.122	4.704.038	23.676.645	4.096.637	184.423.518	6.015.945	48.058.217	2.046.144	6.622.539	123.238.700		241.520	2.317.023	15.645.765	40.966.978			15.053.597	1.503.817	37.314.394	3.356.631	6.273.544		11.762.090	36.825.089	13.194.609	33.445.834	647.659.394	

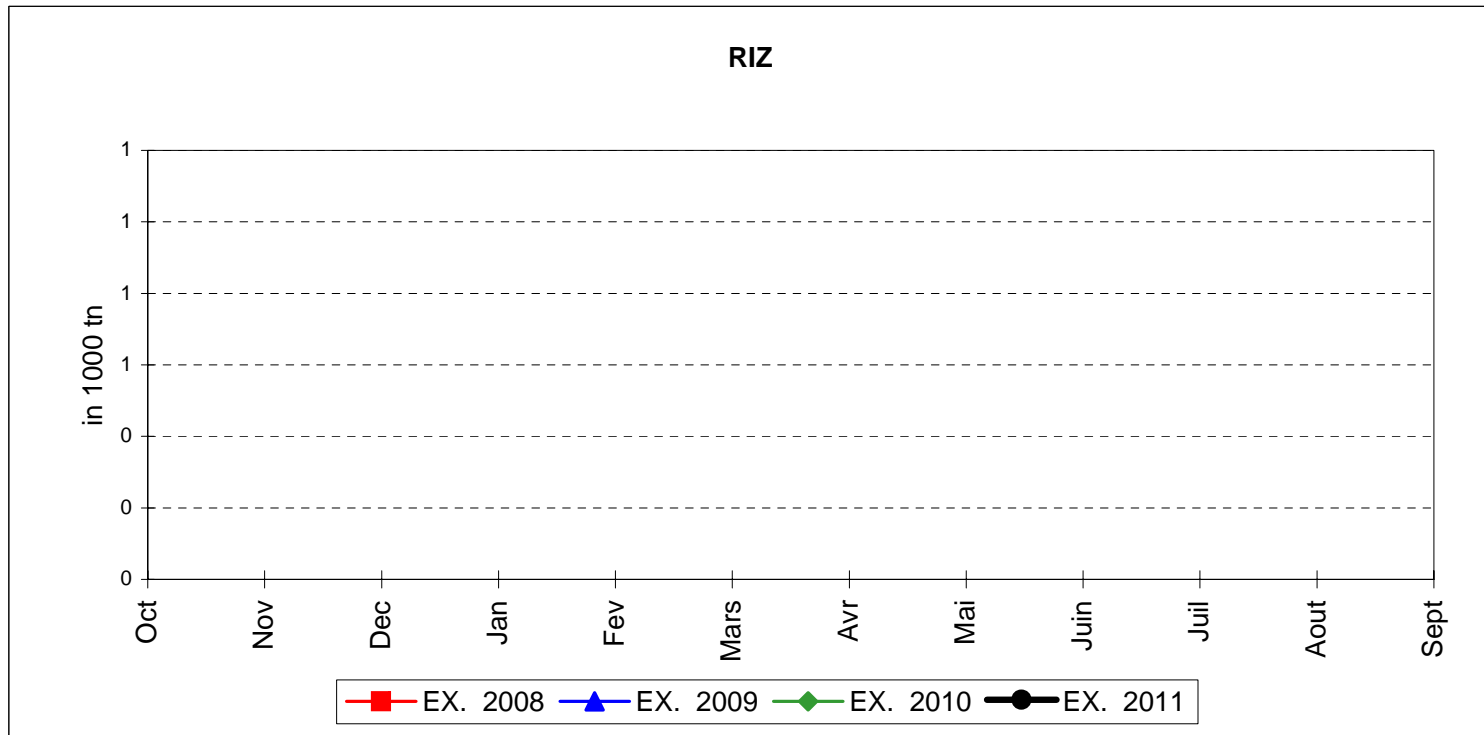
PUBLIC INTERVENTION STOCKS



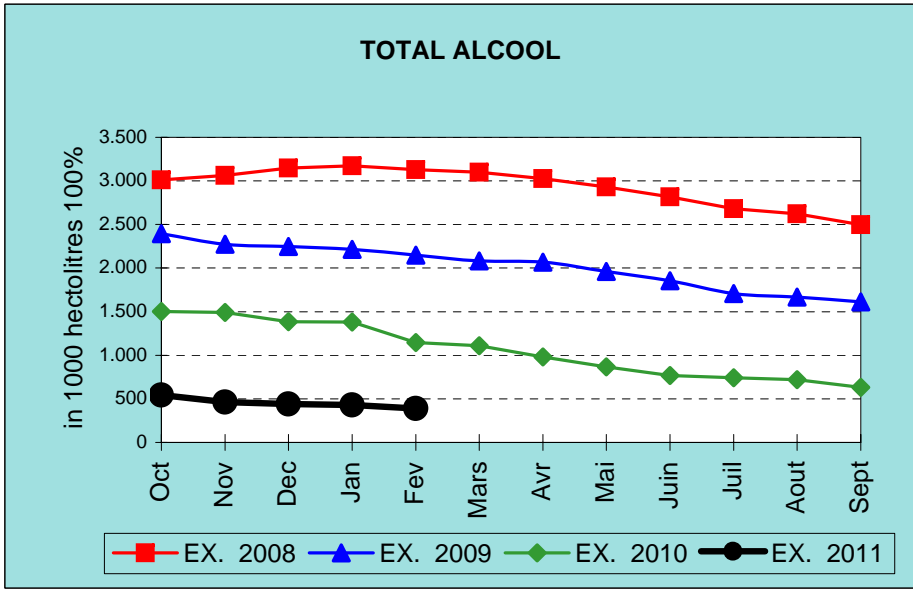
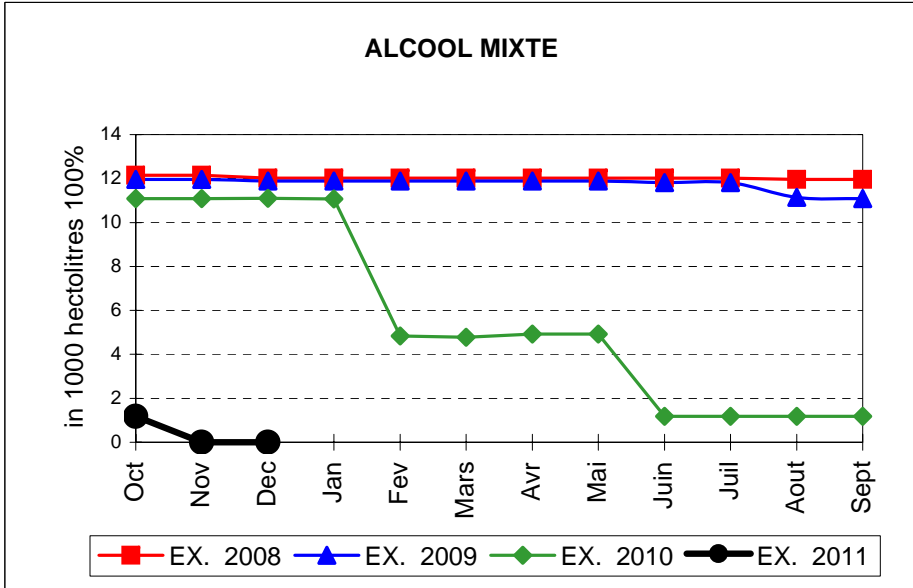
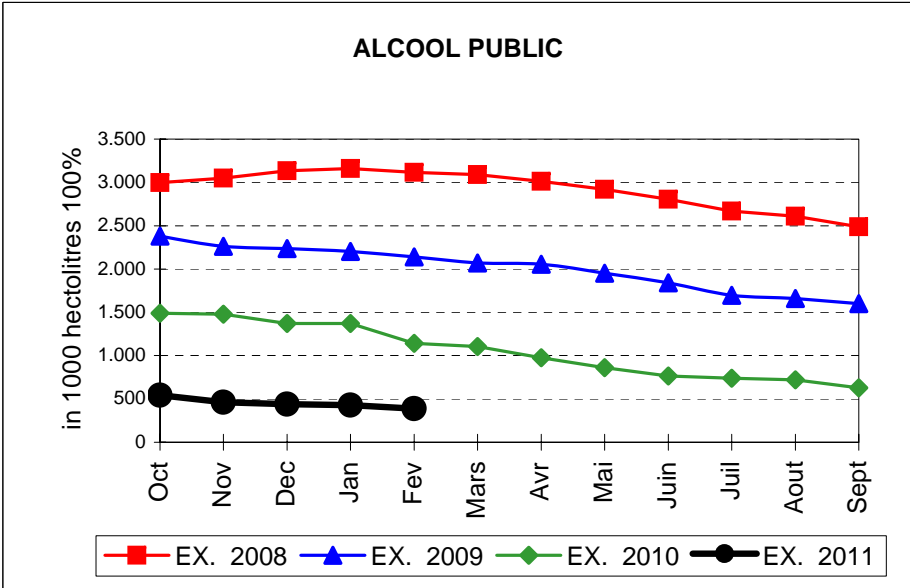
EVOLUTION IN QUANTITIES OF PUBLIC INTERVENTION STOCKS



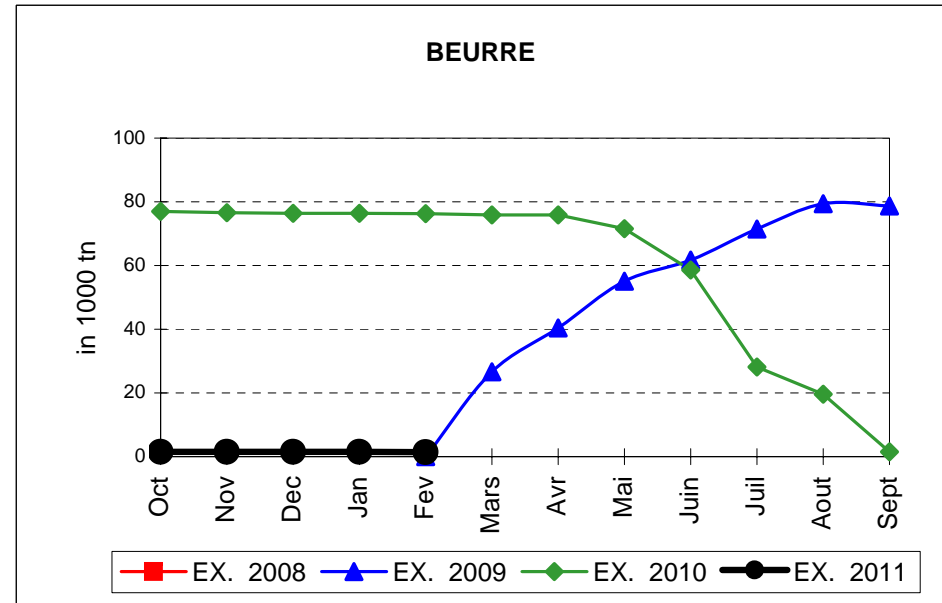
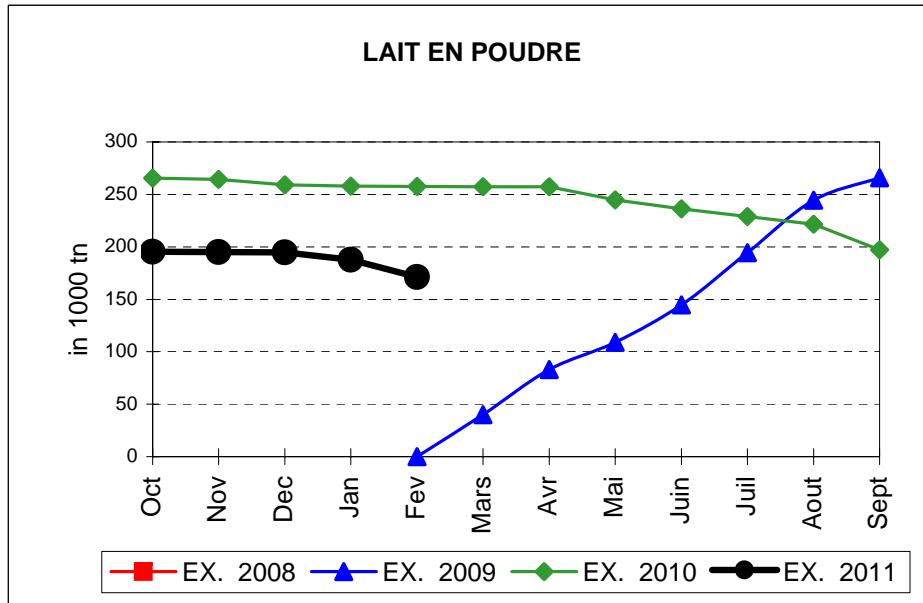
EVOLUTION IN QUANTITIES OF PUBLIC INTERVENTION STOCKS



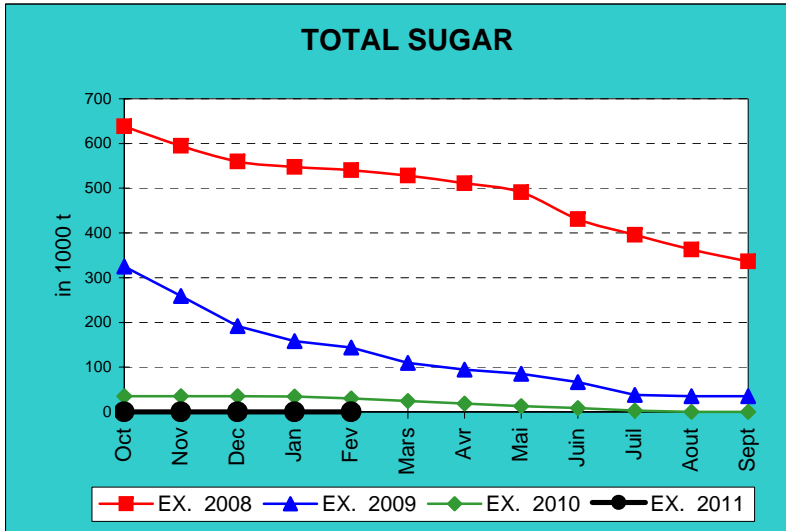
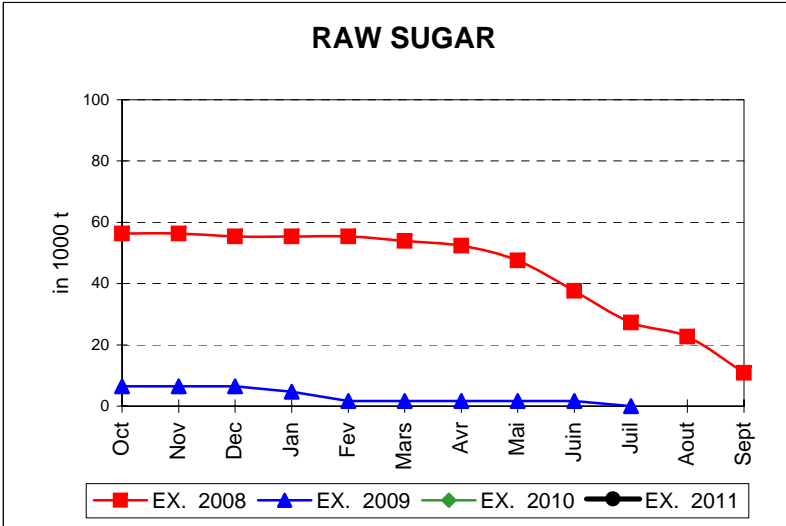
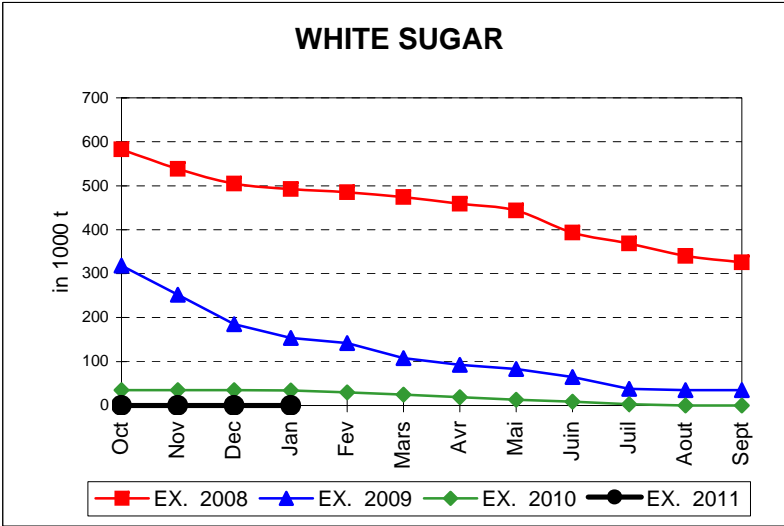
EVOLUTION IN QUANTITIES OF PUBLIC INTERVENTION STOCKS



EVOLUTION IN QUANTITIES OF PUBLIC INTERVENTION STOCKS

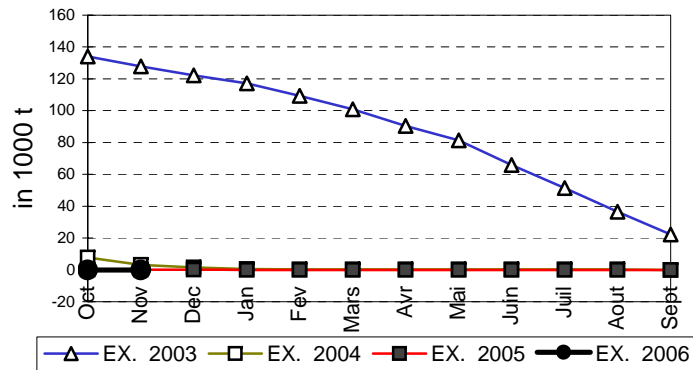


EVOLUTION IN QUANTITIES OF PUBLIC INTERVENTION STOCKS

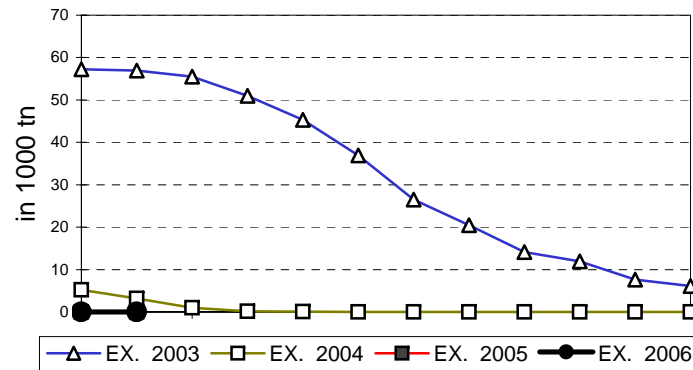


EVOLUTION IN QUANTITIES OF PUBLIC INTERVENTION STOCKS

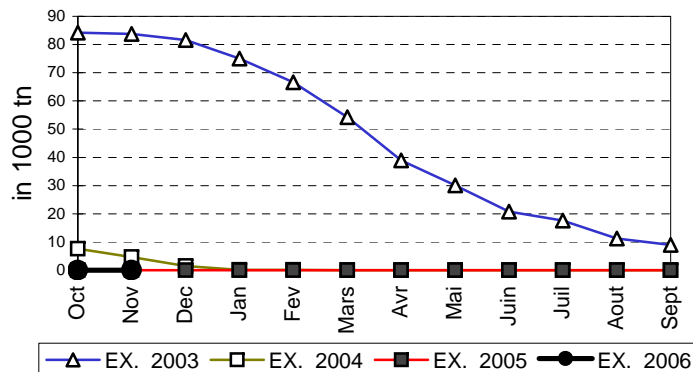
VIANDE BOVINE CARCASSES



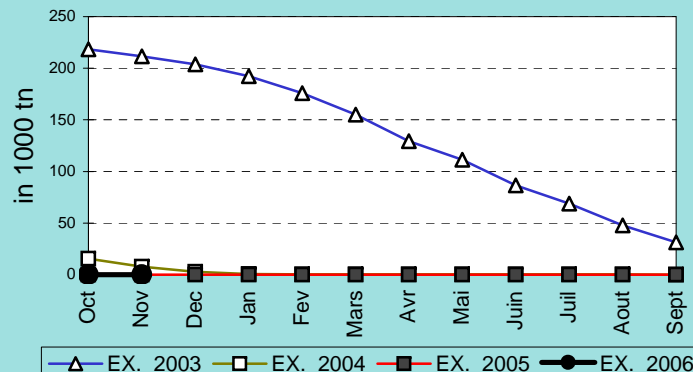
VIANDE BOVINE DESOSSEE



VIANDE DESOSSEE EN EQUIVALENT CARCASSES



TOTAL VIANDE EN EQUIVALENT CARCASSES



COMPARED WITH PREVIOUS MONTH

EU TOTAL	28-feb-11		31-ene-11		CHANGE IN QTY		CHANGE IN VALUE	
	QUANTITY (tn or hl)	VALUE (in Euro)	QUANTITY (tn or hl)	VALUE (In Euro)	ABSOLUTE (tn or hl)	%	ABSOLUTE (in Euro)	%
CLICK TOTALS FOR GRAPHICS	(a)	(b)	(c)	(d)	(e)=(a)-(c)	(f)=(e)/(c)*%	(g)=(b)-(d)	(h)=(g)/(d)*%
Blé panifiable	147.916	14.982.173	147.916	14.982.173				
Orge	3.557.584	361.108.306	4.382.889	445.090.061	-825.305	-19%	-83.981.755	-19%
Seigle								
Sorgho								
Mais								
TOTAL CEREALES	3.705.500	376.090.479	4.530.805	460.072.234	-825.305	-18%	-83.981.755	-18%
TOTAL RIZ								
Alcool Public	388.719	13.217.378	428.890	14.583.609	-40.171	-9%	-1.366.231	-9%
Alcool Mixte								
TOTAL ALCOOL (HL 100%)	388.719	13.217.378	428.890	14.583.609	-40.171	-9%	-1.366.231	-9%
LEP	171.140	255.247.580	187.836	280.144.991	-16.696	-9%	-24.897.410	-9%
Beurre	1.435	3.103.957	1.544	3.341.537	-109	-7%	-237.580	-7%
TOTAL LAIT ET BEURRE	172.576	258.351.538	189.380	283.486.528	-16.805	-9%	-25.134.990	-9%
Sucre blanc			9	3.052	-9	-100%	-3.052	-100%
Sucre brut								
TOTAL SUCRE			9	3.052	-9	-100%	-3.052	-100%
Bov. carc.								
Bov. des.								
Eq. carc.								
TOTAL EQ. CARCASSES								
GRAND TOTAL		647.659.394		758.145.422			-110.486.028	-15%

SOURCE : The declarations of the Member States before controls.

COMPARED WITH PREVIOUS YEAR

EU TOTAL	28-feb-11		28-feb-10		CHANGE IN QTY		CHANGE IN VALUE	
	QUANTITY (tn or hl)	VALUE (in Euro)	QUANTITY (tn or hl)	VALUE (In Euro)	ABSOLUTE (tn or hl)	%	ABSOLUTE (in Euro)	%
CLICK TOTALS FOR GRAPHICS	(a)	(b)	(c)	(d)	(e)=(a)-(c)	(f)=(e)/(c)*%	(g)=(b)-(d)	(h)=(g)/(d)*%
Blé panifiable	147.916	14.982.173	164.829	17.006.468	-16.912	-10%	-2.024.295	-12%
Orge	3.557.584	361.108.306	3.039.505	306.846.410	518.079	17%	54.261.896	18%
Seigle								
Sorgho			279	28.232	-279	-100%	-28.232	-100%
Mais			554.144	56.310.301	-554.144	-100%	-56.310.301	-100%
TOTAL CEREALES	3.705.500	376.090.479	3.758.756	380.191.411	-53.256	-1%	-4.100.932	-1%
TOTAL RIZ								
Alcool Public	388.719	13.217.378	1.141.288	42.340.223	-752.570	-66%	-29.122.846	-69%
Alcool Mixte			4.839	71.046	-4.839	-100%	-71.046	-100%
TOTAL ALCOOL (HL 100%)	388.719	13.217.378	1.146.127	42.411.269	-757.408	-66%	-29.193.891	-69%
LEP	171.140	255.247.580	257.668	384.460.538	-86.528	-34%	-129.212.957	-34%
Beurre	1.435	3.103.957	76.286	166.162.631	-74.851	-98%	-163.058.674	-98%
TOTAL LAIT ET BEURRE	172.570	258.351.538	333.954	550.623.169	-161.378	-48%	-292.271.631	-53%
Sucre blanc			29.978	9.693.652	-29.978	-100%	-9.693.652	-100%
Sucre brut								
TOTAL SUCRE			29.978	9.693.652	-29.978	-100%	-9.693.652	-100%
Bov. carc.								
Bov. des.								
Eq. carc.								
TOTAL EQ. CARCASSES								
GRAND TOTAL		647.659.394		982.919.500			-335.260.106	-34%

SOURCE :

The declarations of the Member States before controls.

THE PUBLIC STORAGE FLASH REPORT AS AT									
28-feb-11									
ESPAÑA									
PRODUCTS	YEAR-TO-DATE		OPENING BALANCE		CHANGE IN QTY		CHANGE IN VALUE		
	QUANTITY (in tonnes or hl)	VALUE (in Euro)	QUANTITY (in tonnes or hl)	VALUE (in Euro)	ABSOLUTE (in tonnes or hl)	%	ABSOLUTE (in Euro)	%	
	(a)	(b)	(c)	(d)	(e)=(a)-(c)	(f)=(e)/(c)*%	(g)=(b)-(d)	(h)=(g)/(d)*%	
Ble panifiable									
Orge									
Seigle									
Sorgho									
Mais									
TOTAL CEREALES									
RIZ									
Alcool Public	194.723	6.622.539	373.725	12.711.227	-179.002	-48%	-6.088.688	-48%	
Alcool Mixte									
TOT. ALCOOL (HL)	194.723	6.622.539	373.725	12.711.227	-179.002	-48%	-6.088.688	-48%	
LEP									
Beurre									
TOTAL L & B									
Sucre Blanc									
Sucre Brut									
TOTAL SUCRE									
Bov. carc.									
Bov. des.									
Eq. carc.									
TOTAL EQ. CARC.									
GRAND TOTAL		6.622.539		12.711.227			-6.088.688	-48%	

28-feb-11

