

CHOOSE COUNTRY

EU TOTAL	YEAR-TO-DATE		OPENING BALANCE (1)		CHANGE IN QTY		CHANGE IN VALUE	
	QUANTITY (tn or hl)	VALUE (in Euro)	QUANTITY (tn or hl)	VALUE (In Euro)	ABSOLUTE (tn or hl)	%	ABSOLUTE (in Euro)	%
CLICK TOTALS FOR GRAPHICS	(a)	(b)	(c)	(d)	(e)=(a)-(c)	(f)=(e)/(c)*%	(g)=(b)-(d)	(h)=(g)/(d)*%
Blé panifiable	24.059	2.695.959	37	3.302	24.022	65438%	2.692.657	81545%
Orge	200.629	21.095.464			200.629		21.095.464	
Seigle								
Sorgho								
Mais	274.015	28.056.236	47.207	4.635.238	226.809	480%	23.420.998	505%
TOTAL CEREALES	498.704	51.847.659	47.244	4.638.540	451.460	956%	47.209.119	1018%
TOTAL RIZ								
Alcool Public	2.069.475	88.331.742	2.484.895	104.449.771	-415.420	-17%	-16.118.029	-15%
Alcool Mixte	11.894	184.533	11.894	184.533	0	0%	1	0%
TOTAL ALCOOL (HL 100%)	2.081.369	88.516.276	2.496.789	104.634.304	-415.420	-17%	-16.118.028	-15%
LEP	40.063	68.210.311			40.063		68.210.311	
Beurre	26.598	58.863.167			26.598		58.863.167	
TOTAL LAIT ET BEURRE	66.661	127.073.478			66.661		127.073.478	
Sucre Blanc	107.765	35.580.188	325.254	108.760.191	-217.489	-67%	-73.180.003	-67%
Sucre Brut	1.661	401.616	10.902	2.635.883	-9.241	-85%	-2.234.267	-85%
TOTAL SUCRE	109.426	35.981.804	336.156	111.396.074	-226.730	-67%	-75.414.270	-68%
Bov. carc.								
Bov. des.								
Eq. carc.								
TOTAL EQ. CARCASSES								
GRAND TOTAL		303.419.217		220.668.917			82.750.299	37%

SOURCE : The declarations of the Member States before controls.

(1) Period 13/2008 annual declaration

quantities are expressed in
tonnes (alcohol in hl 100%)

ACCOUNTING VALUE OF THE PUBLIC INTERVENTION STOCKS AS AT :
(BEFORE THE COMPLEMENTARY DEPRECIATION)

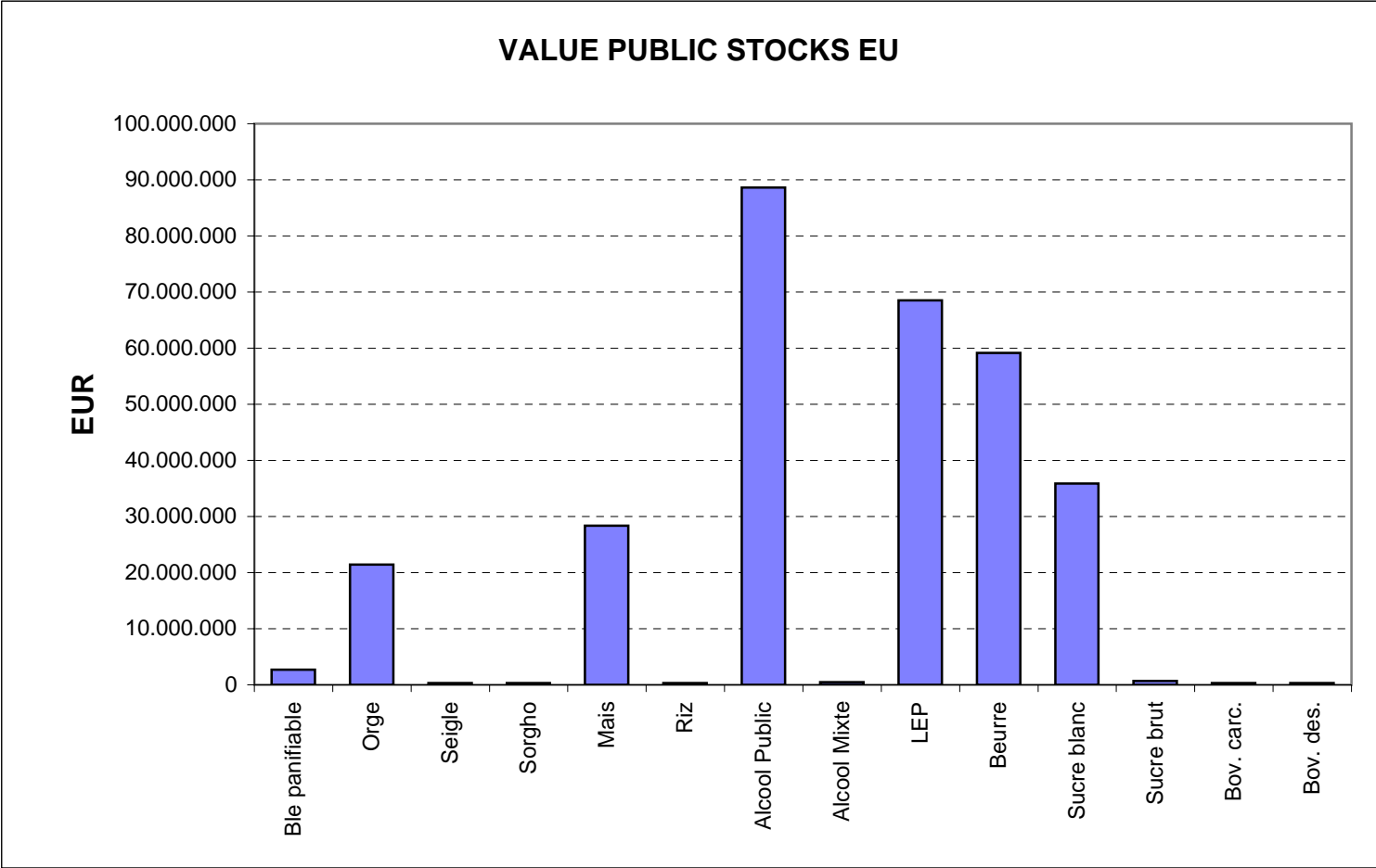
31-mar-09

AGRI I.4

J. FLORET tel. 53236

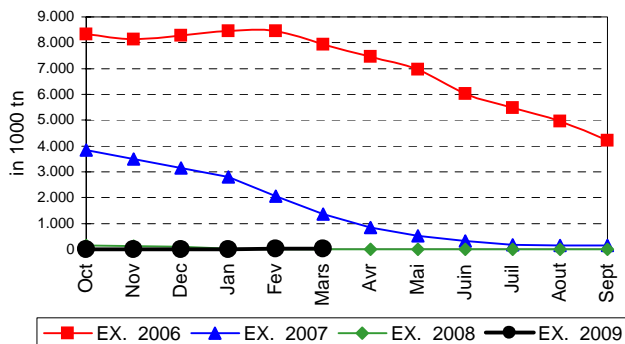
Produits		BE	BG	CZ	DK	DE	EE	IE	EL	ES	FR	IT	CY	LV	LT	LU	HU	MT	NL	OS	PL	PO	RO	SI	SK	FIN	SE	UK	TOTAL
BLE PANIF	quant.		3.013	20.207													37								802				24.059
	valeur		310.798	2.298.769														3.302								83.090			
ORGE	quant.			41.419		41.144	1.344								30.431		32.383		3.114	1.158					5.296	44.123	216		200.629
	valeur			4.641.012		4.210.313	139.745								3.135.876		3.387.292		322.572	117.714					549.280	4.569.344	22.315		21.095.464
SEIGLE	quant.																												
SEIGLE	valeur																												
SORGHO	quant.																												
SORGHO	valeur																												
MAIS	quant.																223.277								50.739				274.015
	valeur																22.814.415								5.241.822				28.056.236
TOT.CER	quant.		3.013	61.626		41.144	1.344								30.431		255.697		3.114	1.158					56.837	44.123	216		498.704
RIZ	quant.																												
RIZ	valeur																												
ALC.P.	quant.								60.366	726.679	495.362	651.025	7.285				55.370					73.388							2.069.475
	valeur								2.584.868	30.738.512	20.790.356	27.941.998	332.865				2.349.335					3.593.809							88.331.742
ALC.M.	quant.										1.789	10.105																	11.894
	valeur										7.084	177.449																	184.533
TOT.ALC.	quant.								60.366	726.679	497.151	661.130	7.285				55.370					73.388							2.081.369
LEP	quant.	5.500		780		14.503	361	3.558											5.877	2.233	529				435	1.606	4.681		40.063
	valeur	9.339.679		1.508.032		24.625.287	612.893	6.041.399												9.978.891	3.791.634	898.242				738.630	2.727.285	7.948.338	68.210.311
BEURRE	quant.	2.119		38		3.870	298	3.770											9.193	1.060	884						2.551		26.598
	valeur	4.674.260		96.617		8.581.503	659.765	8.345.483												20.368.289	2.343.823	1.954.197						5.656.843	58.863.167
TOT L&B	quant.	7.619		818		18.372	658	7.328											15.070	3.293	1.413					435	1.606	7.232	66.661
S. BLANC	quant.	5.679		7.084				12.000				50.118					5.000								27.884				107.765
	valeur	1.660.833		2.388.737				3.491.160				16.879.174					1.757.800								9.402.485				35.580.188
S. BRUT	quant.																										1.661		1.661
	valeur																										401.616		401.616
TOT. SUC	quant.	5.679		7.084				12.000				50.118					5.000								27.884		1.661		109.426
BOV.QUA	quant.																												
BOV.QUA	valeur																												
BOV.DES	quant.																												
BOV.DES	valeur																												
EQ. CARC	quant.																												
TOT EQ	quant.																												
EU TOTAL	valeur	15.674.772	310.798	10.933.167		37.417.104	1.412.403	17.878.042	2.584.868	36.920.899	20.797.440	44.998.621	332.865		3.135.876		30.312.143		30.347.180	322.572	6.253.171	6.446.248			15.276.676	5.307.974	3.151.217	13.605.181	303.419.217

PUBLIC INTERVENTION STOCKS

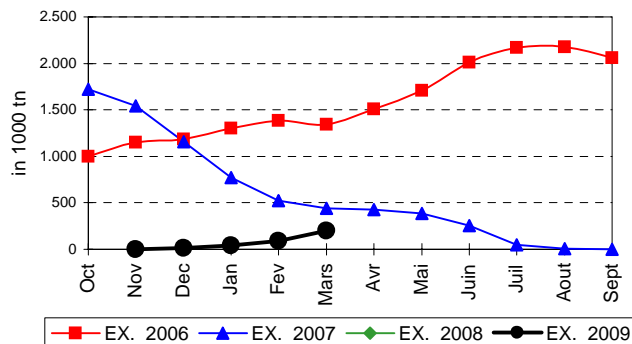


EVOLUTION IN QUANTITIES OF PUBLIC INTERVENTION STOCKS

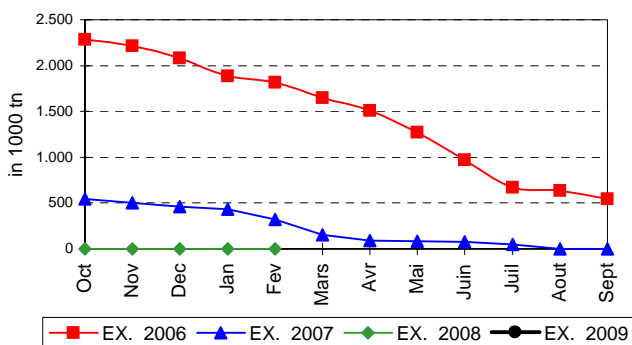
BLE TENDRE PANIFIABLE



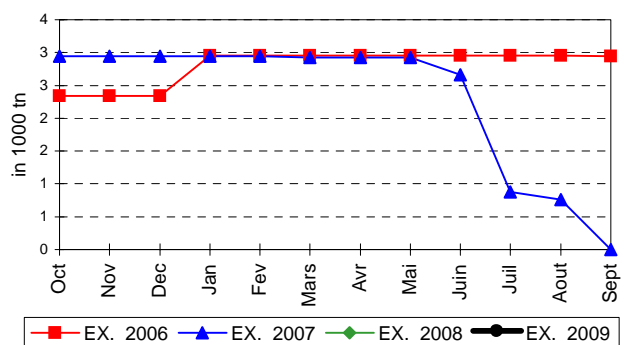
ORGE



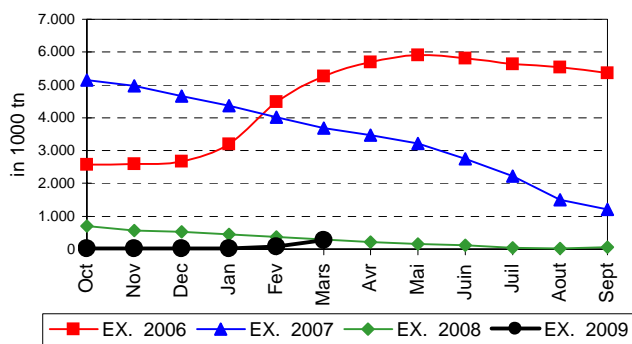
SEIGLE



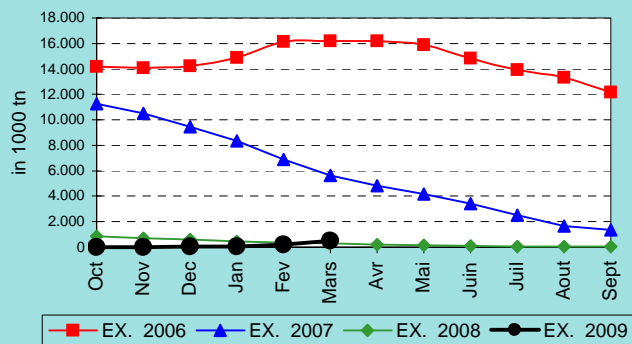
SORGHO



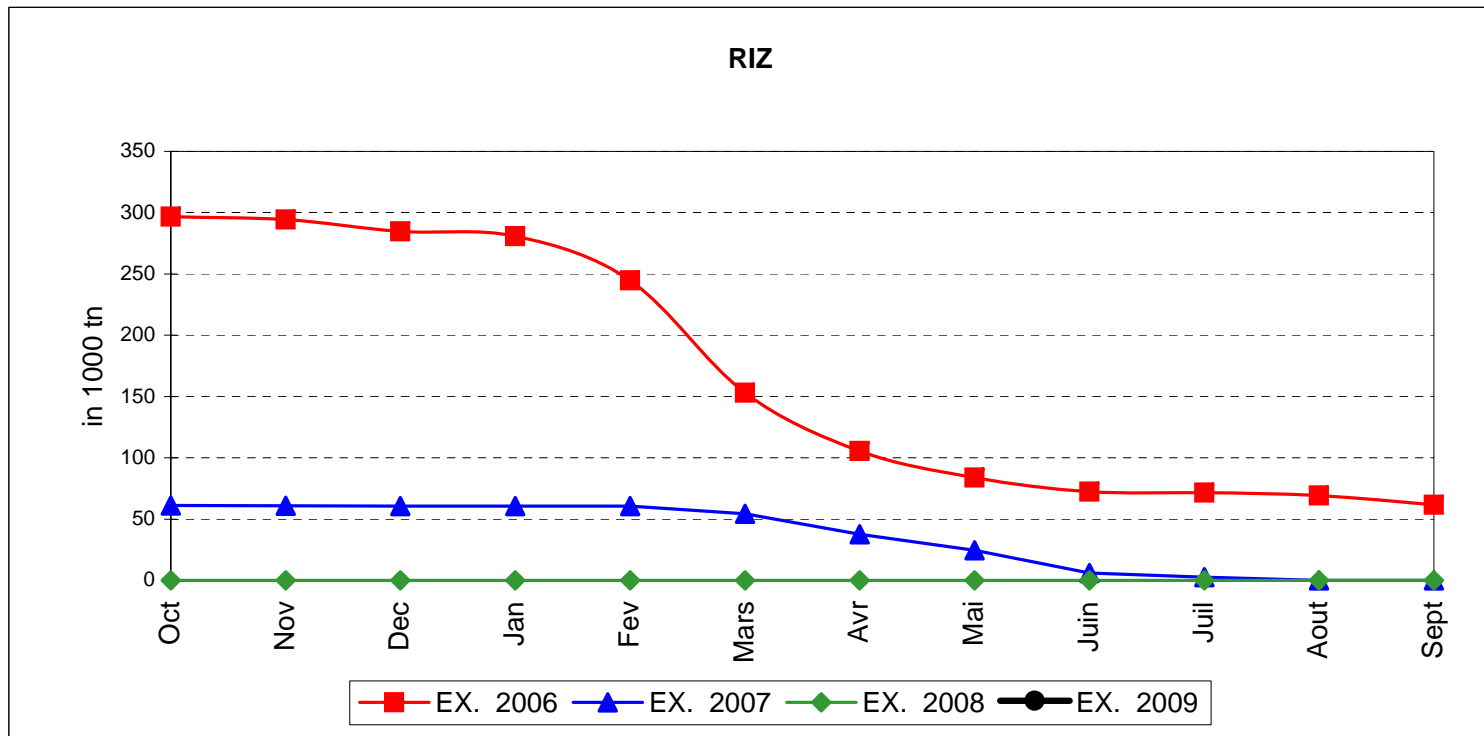
MAIS



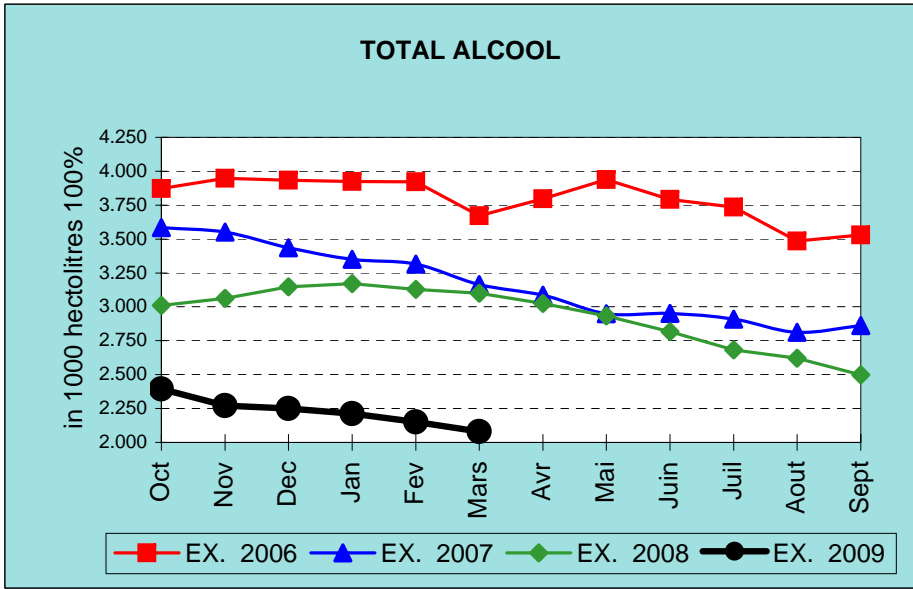
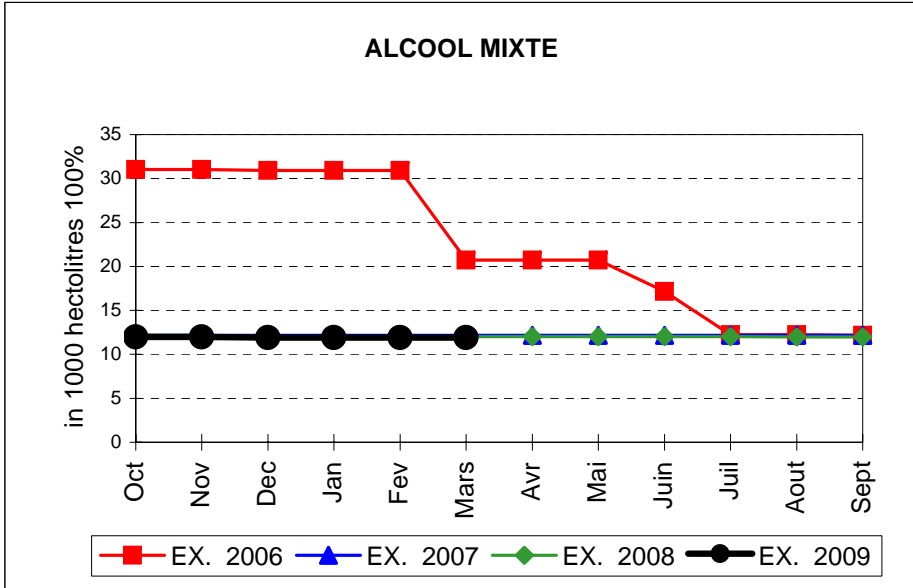
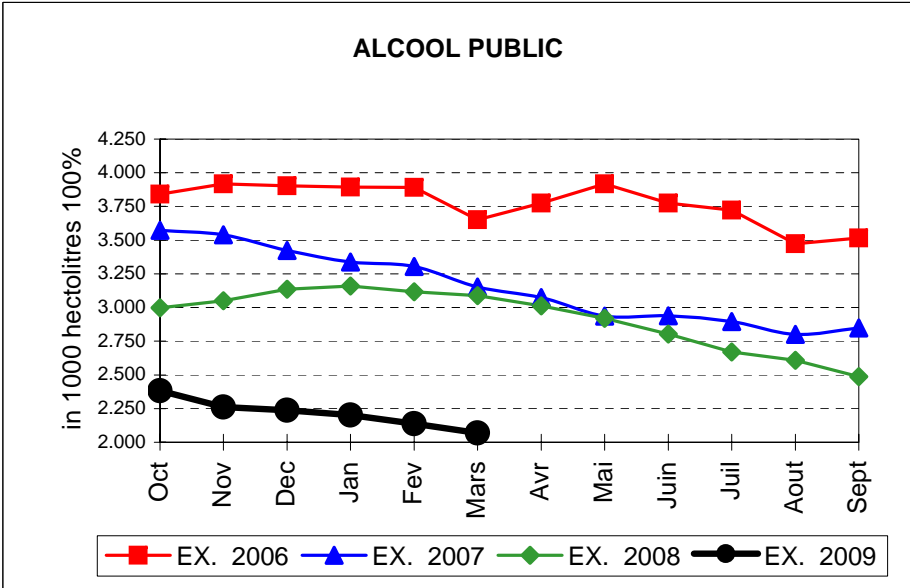
TOTAL CEREALES



EVOLUTION IN QUANTITIES OF PUBLIC INTERVENTION STOCKS

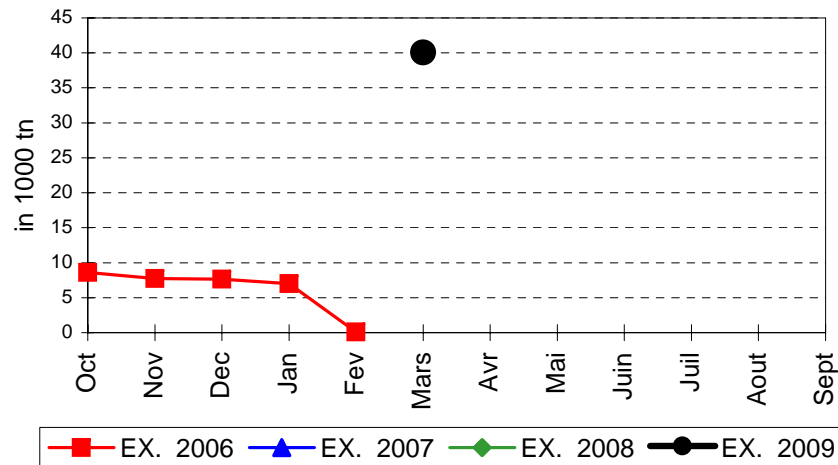


EVOLUTION IN QUANTITIES OF PUBLIC INTERVENTION STOCKS

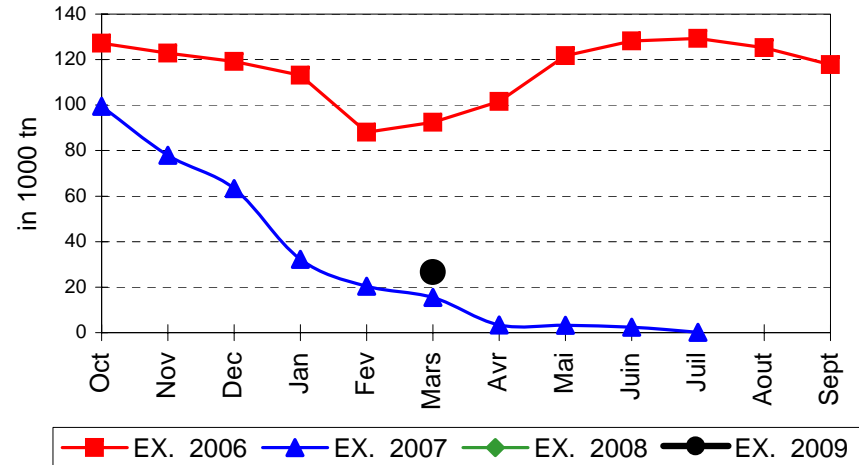


EVOLUTION IN QUANTITIES OF PUBLIC INTERVENTION STOCKS

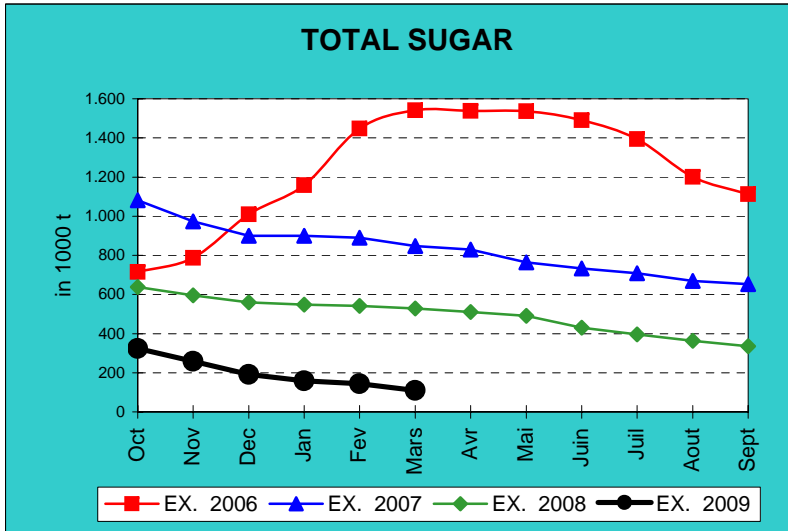
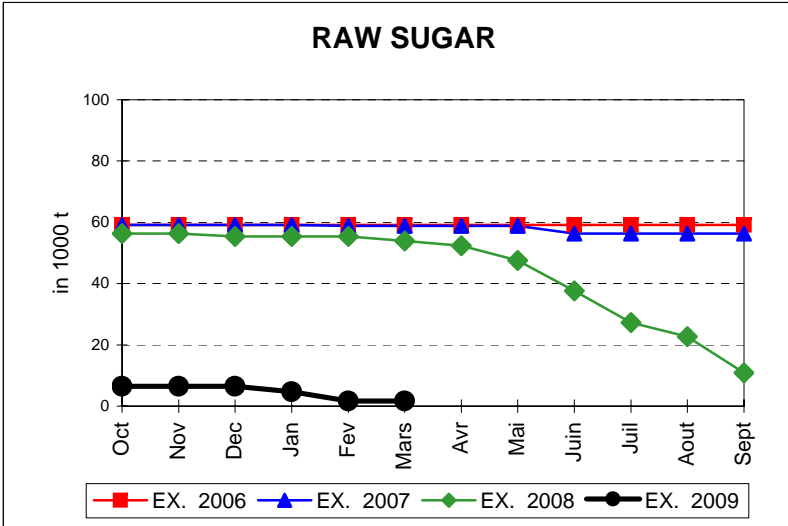
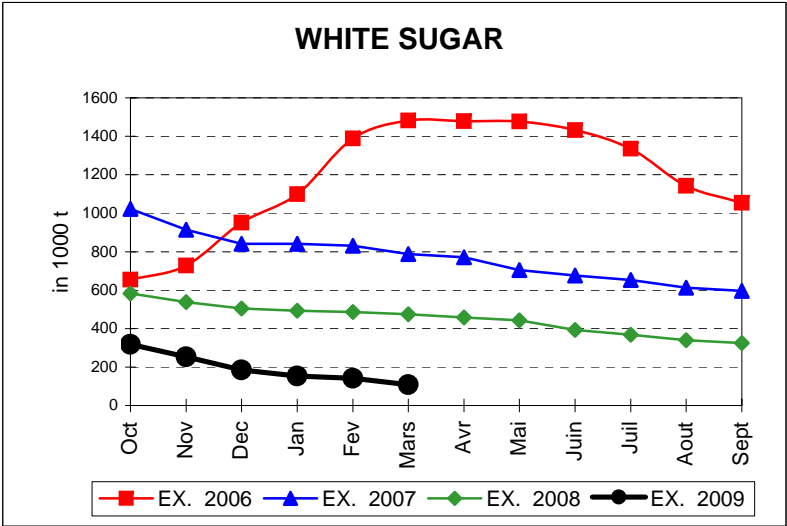
LAIT EN POUDRE



BEURRE

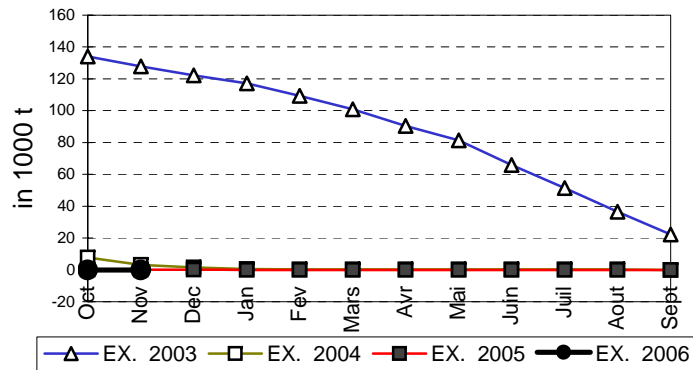


EVOLUTION IN QUANTITIES OF PUBLIC INTERVENTION STOCKS

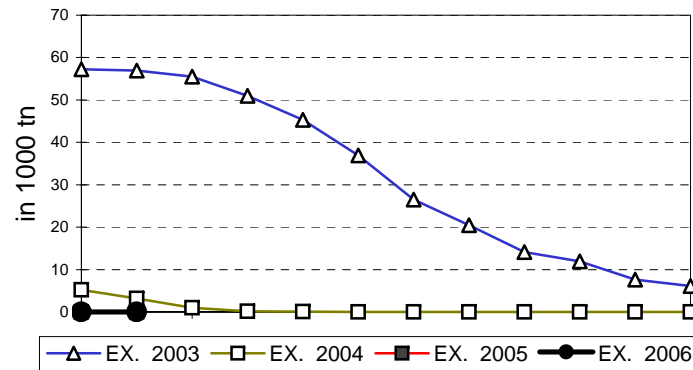


EVOLUTION IN QUANTITIES OF PUBLIC INTERVENTION STOCKS

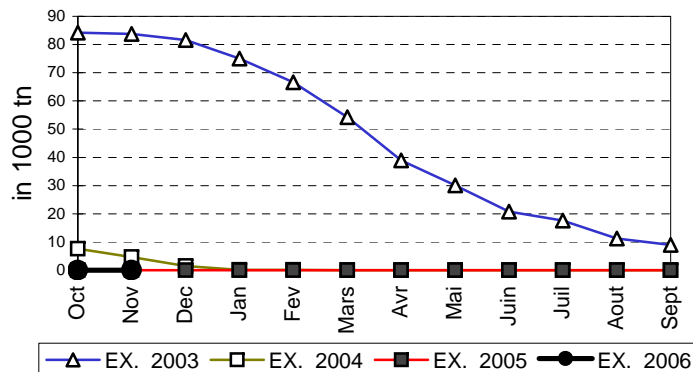
VIANDE BOVINE CARCASSES



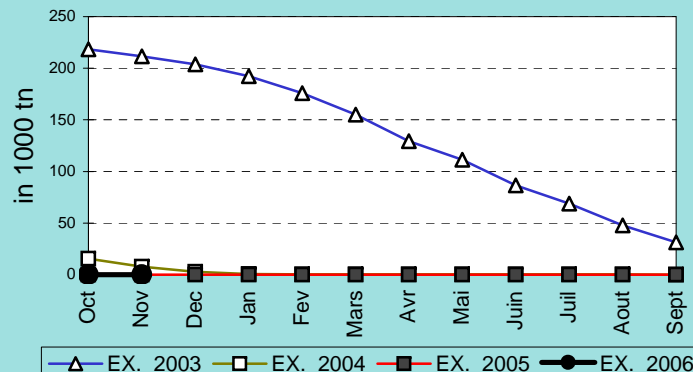
VIANDE BOVINE DESOSSEE



VIANDE DESOSSEE EN EQUIVALENT CARCASSES



TOTAL VIANDE EN EQUIVALENT CARCASSES



COMPARED WITH PREVIOUS MONTH

EU TOTAL	31-mar-09		28-feb-09		CHANGE IN QTY		CHANGE IN VALUE	
	QUANTITY (tn or hl)	VALUE (in Euro)	QUANTITY (tn or hl)	VALUE (In Euro)	ABSOLUTE (tn or hl)	%	ABSOLUTE (in Euro)	%
CLICK TOTALS FOR GRAPHICS	(a)	(b)	(c)	(d)	(e)=(a)-(c)	(f)=(e)/(c)*%	(g)=(b)-(d)	(h)=(g)/(d)*%
Blé panifiable	24.059	2.695.959	17.533	1.989.865	6.526	37%	706.093	35%
Orge	200.629	21.095.464	86.684	9.005.220	113.945	131%	12.090.244	134%
Seigle								
Sorgho								
Mais	274.015	28.056.236	77.087	7.751.865	196.929	255%	20.304.371	262%
TOTAL CEREALES	498.704	51.847.659	181.305	18.746.950	317.399	175%	33.100.709	177%
TOTAL RIZ								
Alcool Public	2.069.475	88.331.742	2.138.239	91.247.991	-68.764	-3%	-2.916.249	-3%
Alcool Mixte	11.894	184.533	11.894	184.533				
TOTAL ALCOOL (HL 100%)	2.081.369	88.516.276	2.150.134	91.432.525	-68.764	-3%	-2.916.249	-3%
LEP	40.063	68.210.311			40.063		68.210.311	
Beurre	26.598	58.863.167			26.598		58.863.167	
TOTAL LAIT ET BEURRE	66.661	127.073.478			66.661		127.073.478	
Sucre blanc	107.765	35.580.188	141.948	47.082.120	-34.183	-24%	-11.501.932	-24%
Sucre brut	1.661	401.616	1.661	401.616				
TOTAL SUCRE	109.426	35.981.804	143.609	47.483.735	-34.183	-24%	-11.501.932	-24%
Bov. carc.								
Bov. des.								
Eq. carc.								
TOTAL EQ. CARCASSES								
GRAND TOTAL		303.419.217		157.663.210			145.756.006	92%

SOURCE : The declarations of the Member States before controls.

COMPARED WITH PREVIOUS YEAR

EU TOTAL	31-mar-09		31-mar-08		CHANGE IN QTY		CHANGE IN VALUE	
	QUANTITY (tn or hl)	VALUE (in Euro)	QUANTITY (tn or hl)	VALUE (In Euro)	ABSOLUTE (tn or hl)	%	ABSOLUTE (in Euro)	%
CLICK TOTALS FOR GRAPHICS	(a)	(b)	(c)	(d)	(e)=(a)-(c)	(f)=(e)/(c)*%	(g)=(b)-(d)	(h)=(g)/(d)*%
Blé panifiable	24.059	2.695.959	5.678	525.862	18.381	324%	2.170.097	413%
Orge	200.629	21.095.464			200.629		21.095.464	
Seigle								
Sorgho								
Mais	274.015	28.056.236	300.177	29.474.401	-26.162	-9%	-1.418.165	-5%
TOTAL CEREALES	498.703	51.847.659	305.856	30.000.262	192.847	63%	21.847.396	73%
TOTAL RIZ								
Alcool Public	2.069.475	88.331.742	3.089.180	145.057.251	-1.019.704	-33%	-56.725.508	-39%
Alcool Mixte	11.894	184.533	12.015	186.670	-121	-1%	-2.137	-1%
TOTAL ALCOOL (HL 100%)	2.081.369	88.516.276	3.101.195	145.243.921	-1.019.825	-33%	-56.727.645	-39%
LEP	40.063	68.210.311			40.063		68.210.311	
Beurre	26.598	58.863.167			26.598		58.863.167	
TOTAL LAIT ET BEURRE	66.661	127.073.478			66.661		127.073.478	
Sucre blanc	107.765	35.580.188	474.192	172.226.832	-366.428	-77%	-136.646.644	-79%
Sucre brut	1.661	401.616	53.938	13.041.073	-52.277	-97%	-12.639.457	-97%
TOTAL SUCRE	109.426	35.981.804	528.130	185.267.904	-418.704	-79%	-149.286.101	-81%
Bov. carc.								
Bov. des.								
Eq. carc.								
TOTAL EQ. CARCASSES								
GRAND TOTAL		303.419.217		360.512.088			-57.092.871	-16%

SOURCE :

The declarations of the Member States before controls.

THE PUBLIC STORAGE FLASH REPORT AS AT										31-mar-09
ESPAÑA										
PRODUCTS	YEAR-TO-DATE		OPENING BALANCE		CHANGE IN QTY		CHANGE IN VALUE			
	QUANTITY (in tonnes or hl)	VALUE (in Euro)	QUANTITY (in tonnes or hl)	VALUE (in Euro)	ABSOLUTE (in tonnes or hl)	%	ABSOLUTE (in Euro)	%		
	(a)	(b)	(c)	(d)	(e)=(a)-(c)	(f)=(e)/(c)*%	(g)=(b)-(d)	(h)=(g)/(d)*%		
Ble panifiable										
Orge										
Seigle										
Sorgho										
Mais										
TOTAL CEREALES										
RIZ										
Alcool Public	726.679	30.738.512	820.230	34.532.971	-93.551	-11%	-3.794.459	-11%		
Alcool Mixte										
TOT. ALCOOL (HL)	726.679	30.738.512	820.230	34.532.971	-93.551	-11%	-3.794.459	-11%		
LEP										
Beurre	2.815	6.182.387			2.815		6.182.387			
TOTAL L & B	2.815	6.182.387			2.815		6.182.387			
Sucre Blanc										
Sucre Brut										
TOTAL SUCRE										
Bov. carc.										
Bov. des.										
Eq. carc.										
TOTAL EQ. CARC.										
GRAND TOTAL		36.920.899		34.532.971			2.387.928	7%		

31-mar-09

