

CHOOSE COUNTRY

| EU TOTAL | YEAR-TO-DATE | | OPENING BALANCE (1) | | CHANGE IN QTY | | CHANGE IN VALUE | |
|-------------------------------|------------------------|----------------------|------------------------|--------------------|------------------------|---------------|-----------------------|---------------|
| | QUANTITY (tn or hl) | VALUE (in Euro) | QUANTITY (tn or hl) | VALUE (In Euro) | ABSOLUTE (tn or hl) | % | ABSOLUTE (in Euro) | % |
| CLICK TOTALS FOR GRAPHICS | (a) | (b) | (c) | (d) | (e)=(a)-(c) | (f)=(e)/(c)*% | (g)=(b)-(d) | (h)=(g)/(d)*% |
| Blé panifiable | 182.189 | 18.781.069 | 76.703 | 7.911.093 | 105.486 | 138% | 10.869.976 | 137% |
| Orge | 3.647.499 | 368.864.395 | 925.385 | 94.445.665 | 2.722.114 | 294% | 274.418.730 | 291% |
| Seigle | | | | | | | | |
| Sorgho | | | 502 | 50.812 | -502 | -100% | -50.812 | -100% |
| Mais | 554.144 | 56.310.301 | 556.111 | 56.510.040 | -1.967 | 0% | -199.739 | 0% |
| TOTAL CEREALES | 4.383.832 | 443.955.765 | 1.558.701 | 158.917.609 | 2.825.131 | 181% | 285.038.156 | 179% |
| TOTAL RIZ | | | | | | | | |
| Alcool Public | 1.104.823 | 40.991.252 | 1.600.049 | 59.312.261 | -495.226 | -31% | -18.321.009 | -31% |
| Alcool Mixte | 4.779 | 70.003 | 11.067 | 180.503 | -6.287 | -57% | -110.501 | -61% |
| TOTAL ALCOOL (HL 100%) | 1.109.602 | 41.061.255 | 1.611.116 | 59.492.764 | -501.514 | -31% | -18.431.509 | -31% |
| LEP | 257.423 | 384.093.592 | 268.527 | 400.661.815 | -11.103 | -4% | -16.568.222 | -4% |
| Beurre | 75.893 | 165.306.621 | 78.688 | 171.396.018 | -2.795 | -4% | -6.089.396 | -4% |
| TOTAL LAIT ET BEURRE | 333.317 | 549.400.214 | 347.215 | 572.057.832 | -13.898 | -4% | -22.657.619 | -4% |
| Sucre Blanc | 24.457 | 7.887.299 | 34.080 | 10.975.054 | -9.623 | -28% | -3.087.755 | -28% |
| Sucre Brut | | | | | | | | |
| TOTAL SUCRE | 24.457 | 7.887.299 | 34.080 | 10.975.054 | -9.623 | -28% | -3.087.755 | -28% |
| Bov. carc. | | | | | | | | |
| Bov. des. | | | | | | | | |
| Eq. carc. | | | | | | | | |
| TOTAL EQ. CARCASSES | | | | | | | | |
| GRAND TOTAL | | 1.042.304.533 | | 801.443.260 | | | 240.861.273 | 30% |

SOURCE : The declarations of the Member States before controls.

(1) Period 13/2009 annual declaration

quantities are expressed in
tonnes (alcohol in hl 100%)

ACCOUNTING VALUE OF THE PUBLIC INTERVENTION STOCKS AS AT :
(BEFORE THE COMPLEMENTARY DEPRECIATION)

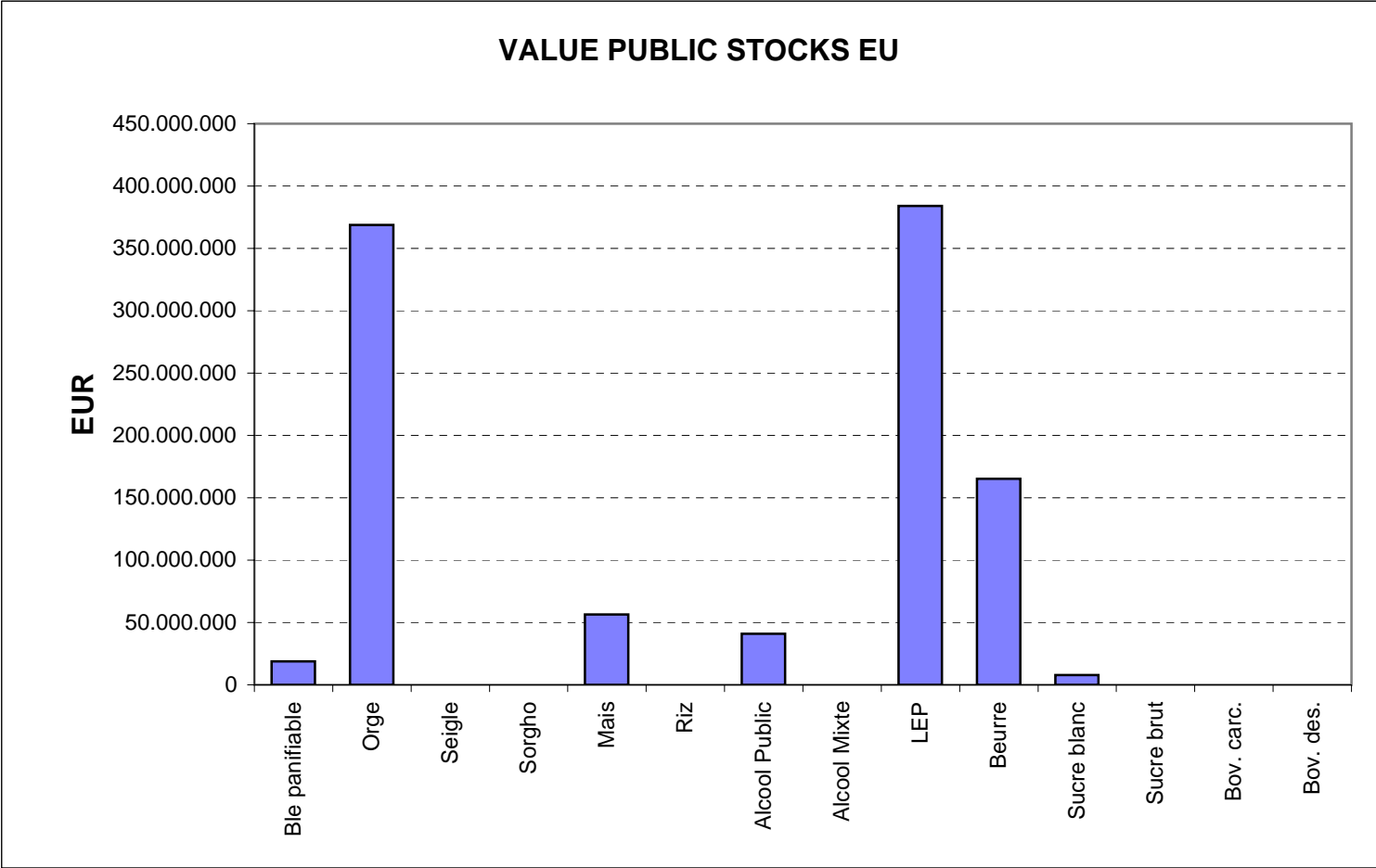
31-mar-10

AGRI I.4

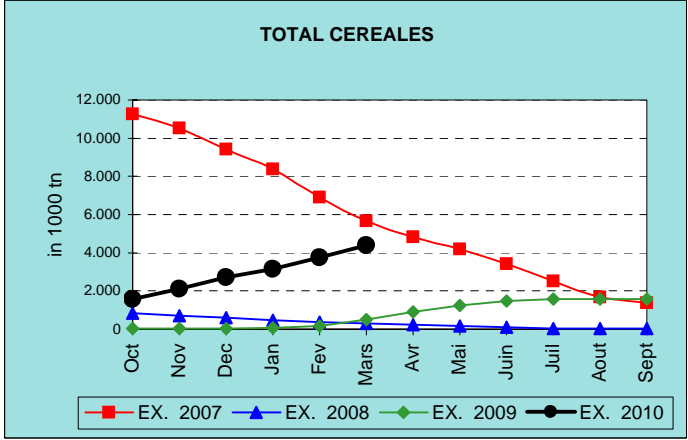
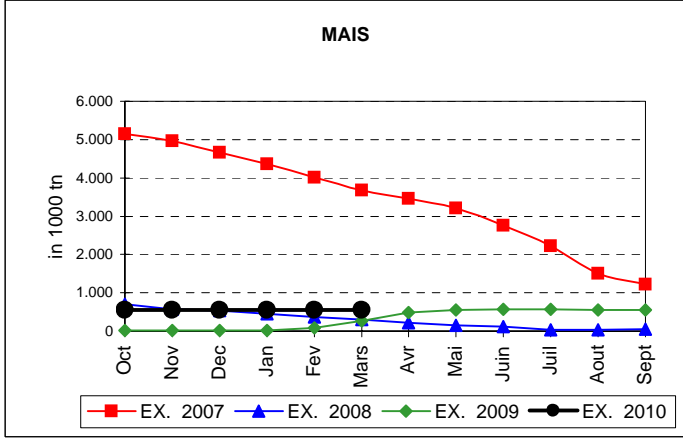
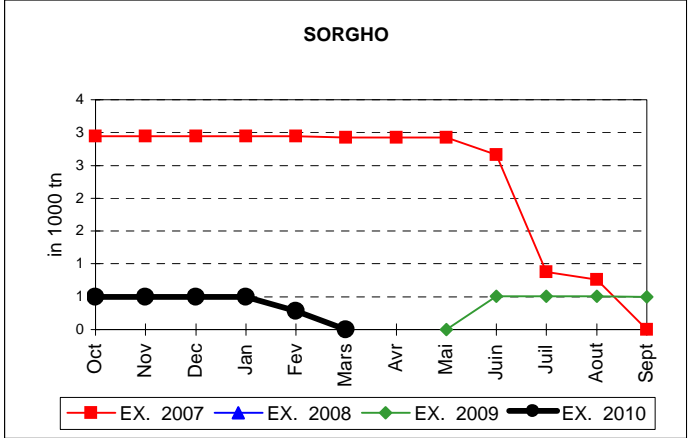
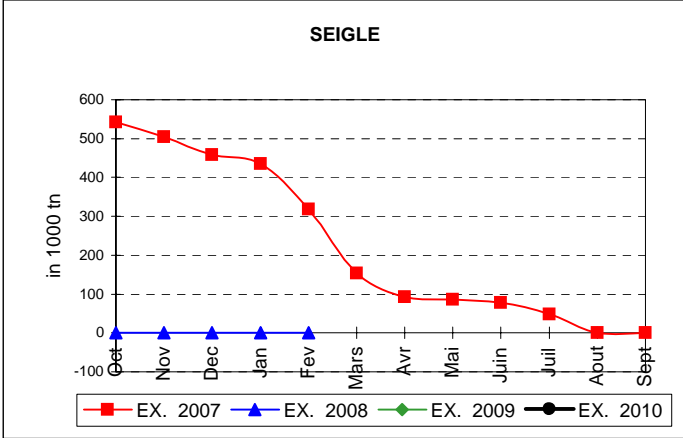
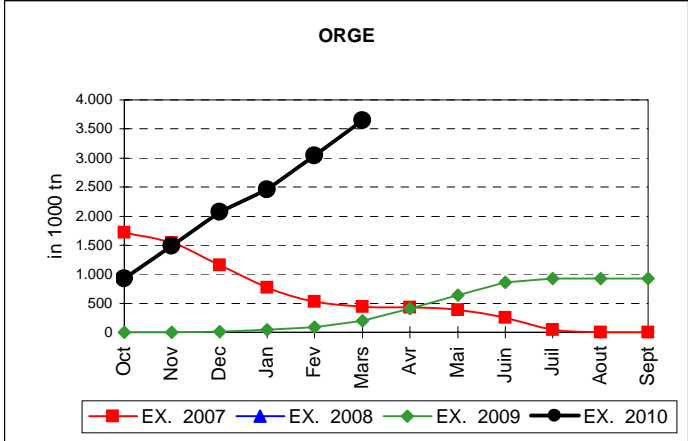
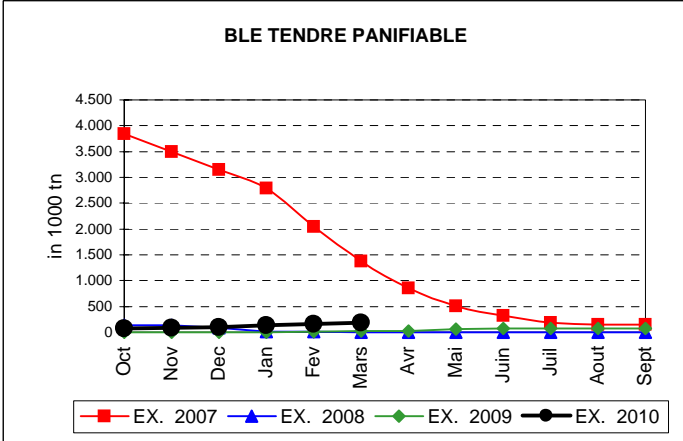
J. FLORET tel. 53236

| Produits | | BE | BG | CZ | DK | DE | EE | IE | EL | ES | FR | IT | CY | LV | LT | LU | HU | MT | NL | OS | PL | PO | RO | SI | SK | FIN | SE | UK | TOTAL | |
|-----------|--------|------------|-----------|------------|---------|-------------|------------|------------|-----------|------------|-------------|------------|---------|-----------|------------|--------|------------|----|------------|------------|------------|------------|----|----|------------|------------|------------|------------|-------------|---------------|
| BLE PANIF | quant. | | 6.663 | 87.781 | | | | | | | | | | | 91 | 55.996 | | | | 621 | | | | | 27.457 | 3.580 | | | 182.189 | |
| | valeur | | 667.610 | 9.217.029 | | | | | | | | | | | | 8.867 | 5.675.184 | | | | 62.820 | | | | | 2.785.479 | 364.079 | | | 18.781.069 |
| ORGE | quant. | 13.452 | 16.294 | 333.438 | 9.641 | 1.266.673 | 63.476 | | | | 405.842 | | | 22.664 | 150.342 | | 269.919 | | 20.202 | 309.773 | | | | | 97.795 | 491.417 | 108.626 | 67.945 | 3.647.499 | |
| | valeur | 1.345.323 | 1.678.892 | 35.204.407 | 963.488 | 126.743.319 | 6.386.285 | | | | 41.091.540 | | | 2.283.175 | 15.104.875 | | 27.388.641 | | 2.046.092 | 31.036.144 | | | | | 9.955.491 | 49.839.495 | 10.946.290 | 6.850.938 | 368.864.395 | |
| SEIGLE | quant. | | | | | | | | | | | | | | | | | | | | | | | | | | | | | |
| SEIGLE | valeur | | | | | | | | | | | | | | | | | | | | | | | | | | | | | |
| SORGHO | quant. | | | | | | | | | | | | | | | | | | | | | | | | | | | | | |
| SORGHO | valeur | | | | | | | | | | | | | | | | | | | | | | | | | | | | | |
| MAIS | quant. | | | | | | | | | | | | | | | | 443.740 | | | | | | | | 110.404 | | | | 554.144 | |
| | valeur | | | | | | | | | | | | | | | | 44.950.812 | | | | | | | | 11.359.489 | | | | 56.310.301 | |
| TOT.CER | quant. | 13.452 | 22.956 | 421.219 | 9.641 | 1.266.673 | 63.476 | | | | 405.842 | | | 22.664 | 150.433 | | 769.654 | | 20.202 | 310.394 | | | | | 235.655 | 494.997 | 108.626 | 67.945 | 4.383.832 | |
| RIZ | quant. | | | | | | | | | | | | | | | | | | | | | | | | | | | | | |
| RIZ | valeur | | | | | | | | | | | | | | | | | | | | | | | | | | | | | |
| ALC.P. | quant. | | | | | | | | 60.269 | 548.377 | 141.179 | 220.622 | 7.219 | | | | 55.026 | | | | | 72.130 | | | | | | | 1.104.823 | |
| | valeur | | | | | | | | 2.229.366 | 20.410.602 | 5.225.038 | 8.156.394 | 266.516 | | | | 2.035.953 | | | | | 2.667.383 | | | | | | | 40.991.252 | |
| ALC.M. | quant. | | | | | | | | | | 1.024 | 3.756 | | | | | | | | | | | | | | | | | 4.779 | |
| | valeur | | | | | | | | | | 4.054 | 65.949 | | | | | | | | | | | | | | | | | 70.003 | |
| TOT.ALC. | quant. | | | | | | | | 60.269 | 548.377 | 142.203 | 224.378 | 7.219 | | | | 55.026 | | | | | 72.130 | | | | | | | 1.109.602 | |
| LEP | quant. | 24.122 | | 3.766 | | 63.775 | 2.634 | 32.175 | | 1.382 | 54.569 | | | | 10.344 | | | | 19.860 | | 20.549 | 2.433 | | | | 1.552 | 3.614 | 16.649 | 257.423 | |
| LEP | valeur | 35.721.397 | | 5.932.845 | | 94.890.079 | 3.768.210 | 48.065.687 | | 2.105.975 | 81.759.267 | | | | 15.503.069 | | | | 29.689.359 | | 30.469.181 | 3.642.096 | | | | 2.324.663 | 5.412.002 | 24.809.764 | 384.093.592 | |
| BEURRE | quant. | 3.232 | | 527 | | 9.894 | 1.153 | 13.922 | | 9.335 | 13.081 | | | | 1.713 | | | | 11.541 | | 1.901 | 5.079 | | | | | | 4.516 | 75.893 | |
| | valeur | 7.045.295 | | 1.200.445 | | 21.567.767 | 2.355.675 | 30.348.859 | | 20.336.764 | 28.499.248 | | | | 3.734.197 | | | | 25.158.335 | | 4.146.093 | 11.071.712 | | | | | | 9.842.231 | 165.306.621 | |
| TOT L&B | quant. | 27.354 | | 4.293 | | 73.668 | 3.787 | 46.097 | | 10.717 | 67.649 | | | | 12.057 | | | | 31.401 | | 22.449 | 7.512 | | | | 1.552 | 3.614 | 21.165 | 333.317 | |
| S. BLANC | quant. | | | 536 | | | | 995 | | | | | | | | | | | | | | | | | | | | | 24.457 | |
| | valeur | | | 180.655 | | | | 289.475 | | | | | | | | | | | | | | | | | | | | | 7.887.299 | |
| S. BRUT | quant. | | | | | | | | | | | | | | | | | | | | | | | | | | | | | |
| S. BRUT | valeur | | | | | | | | | | | | | | | | | | | | | | | | | | | | | |
| TOT. SUC | quant. | | | 536 | | | | 995 | | | | | | | | | | | | | | | | | | | | | 24.457 | |
| BOV.QUA | quant. | | | | | | | | | | | | | | | | | | | | | | | | | | | | | |
| BOV.QUA | valeur | | | | | | | | | | | | | | | | | | | | | | | | | | | | | |
| BOV.DES | quant. | | | | | | | | | | | | | | | | | | | | | | | | | | | | | |
| BOV.DES | valeur | | | | | | | | | | | | | | | | | | | | | | | | | | | | | |
| EQ. CARC | quant. | | | | | | | | | | | | | | | | | | | | | | | | | | | | | |
| TOT EQ | quant. | | | | | | | | | | | | | | | | | | | | | | | | | | | | | |
| EU TOTAL | valeur | 44.112.016 | 2.346.502 | 51.735.381 | 963.488 | 243.201.164 | 12.510.171 | 78.704.021 | 2.229.366 | 42.853.340 | 156.579.147 | 15.639.511 | 266.516 | 2.283.175 | 34.351.007 | | 80.050.591 | | 54.847.694 | 2.046.092 | 65.714.238 | 17.381.191 | | | | 24.100.459 | 52.528.238 | 16.358.293 | 41.502.932 | 1.042.304.533 |

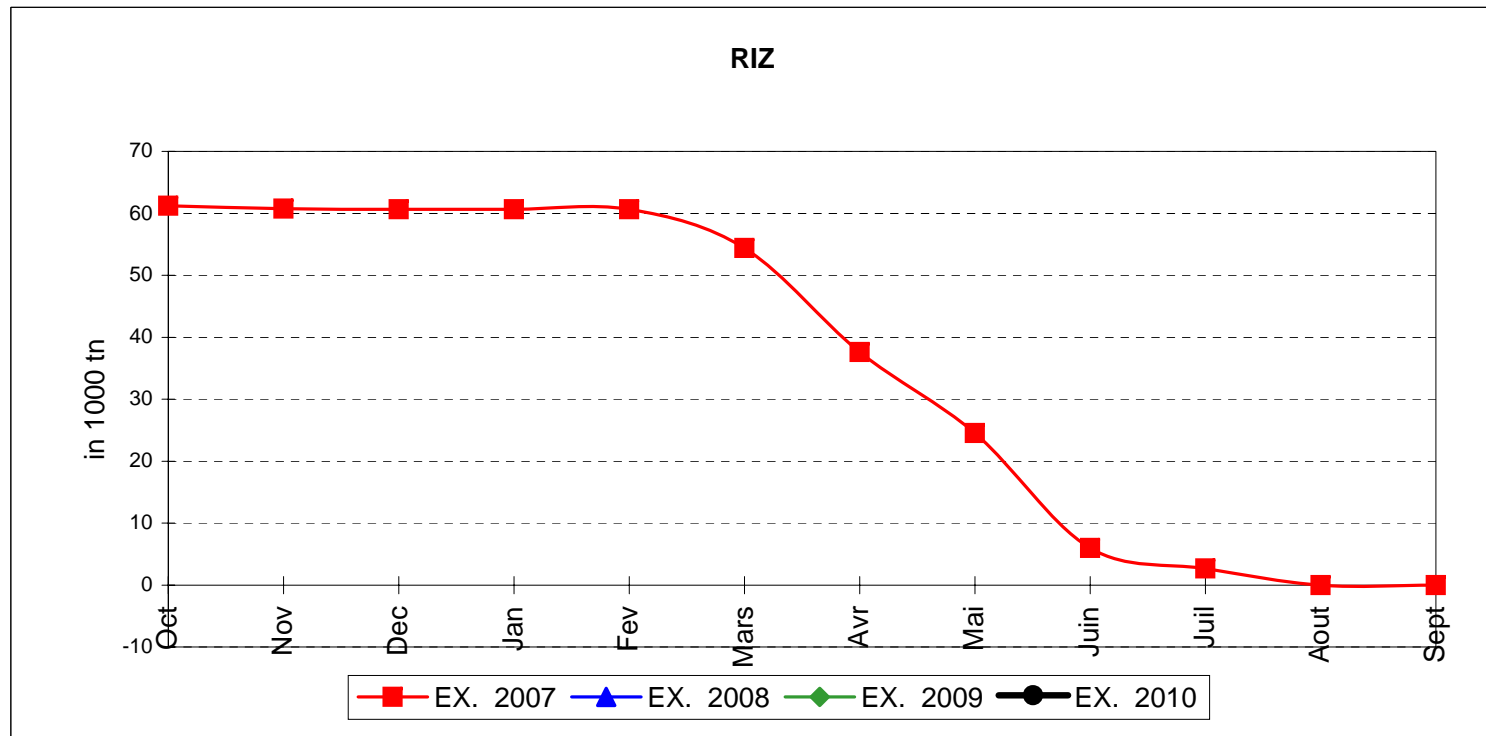
PUBLIC INTERVENTION STOCKS



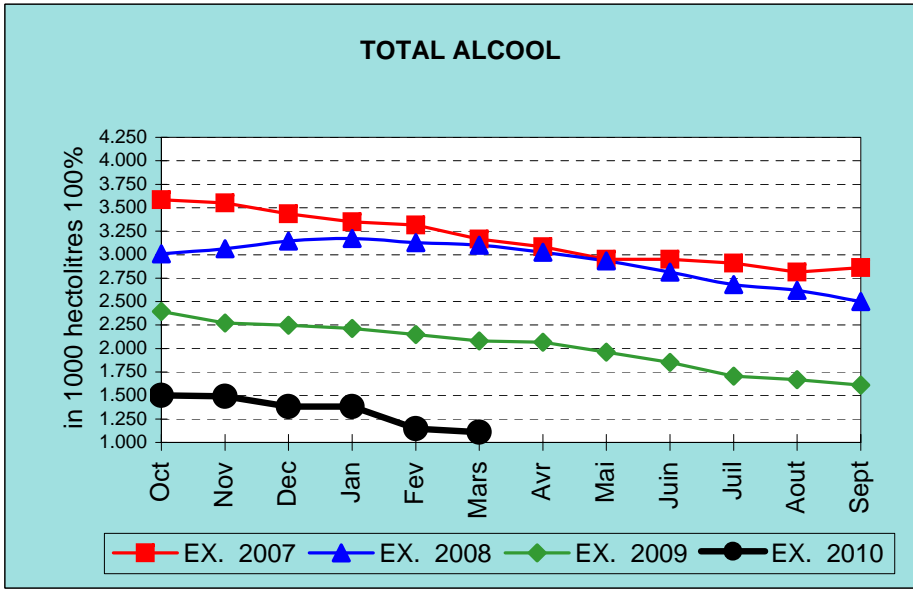
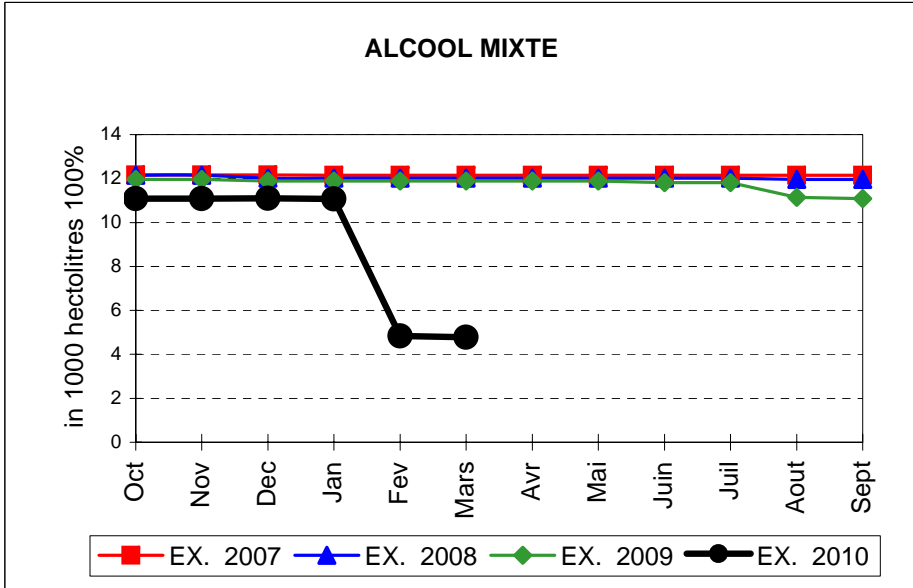
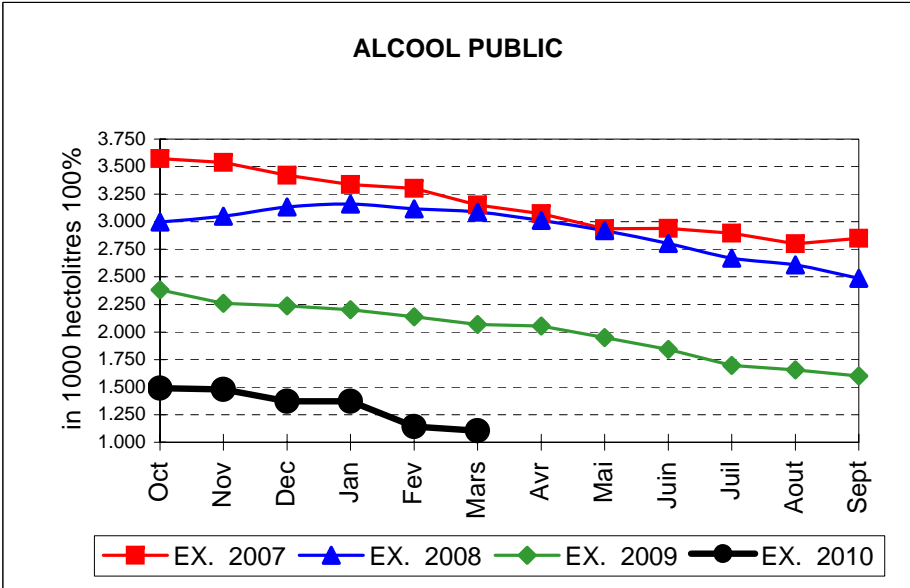
EVOLUTION IN QUANTITIES OF PUBLIC INTERVENTION STOCKS



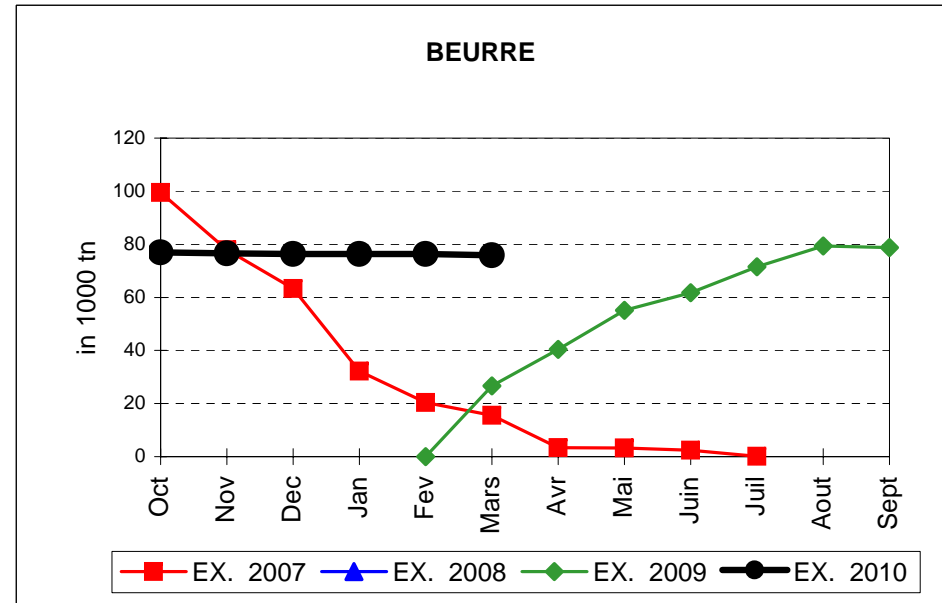
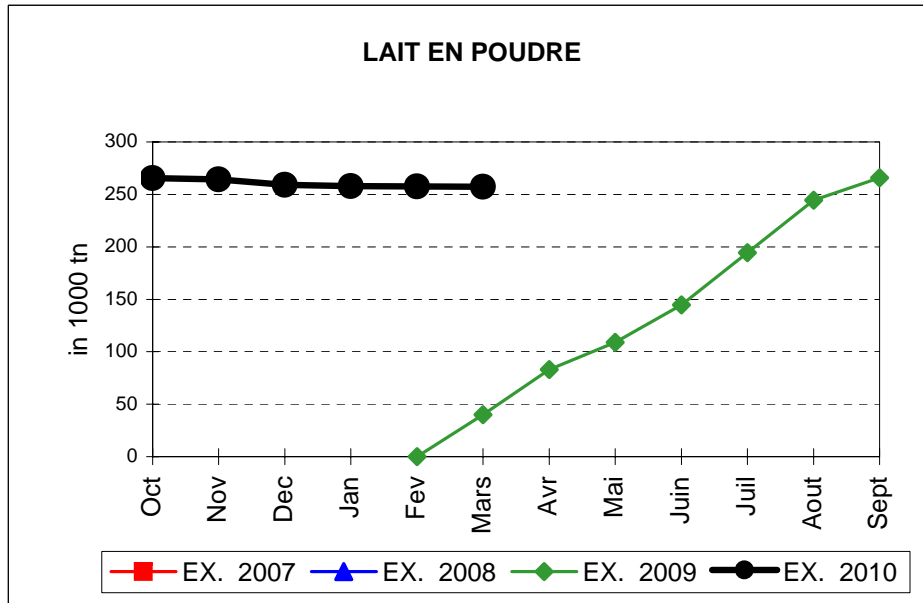
EVOLUTION IN QUANTITIES OF PUBLIC INTERVENTION STOCKS



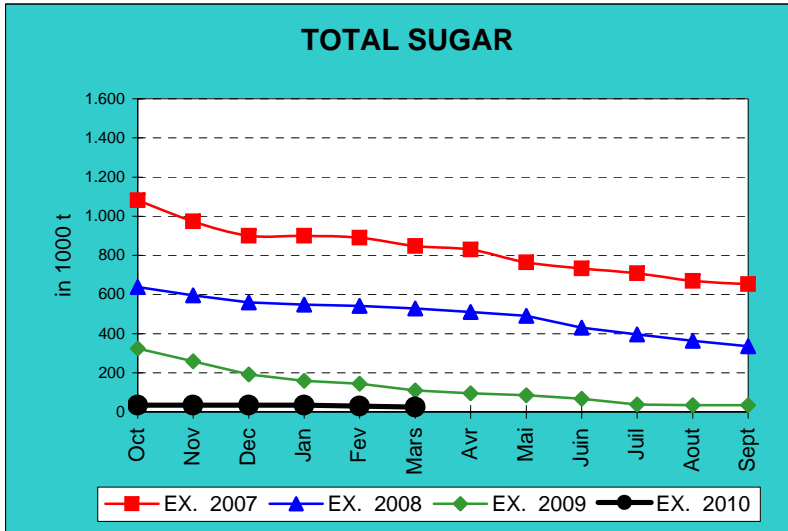
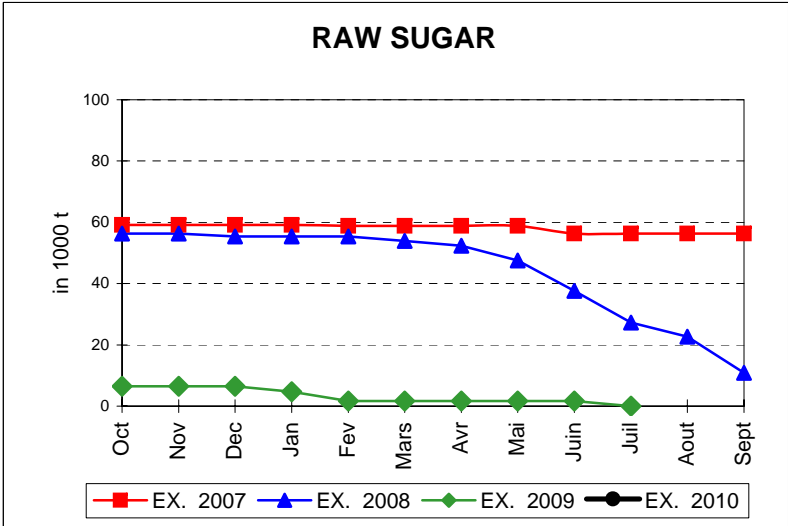
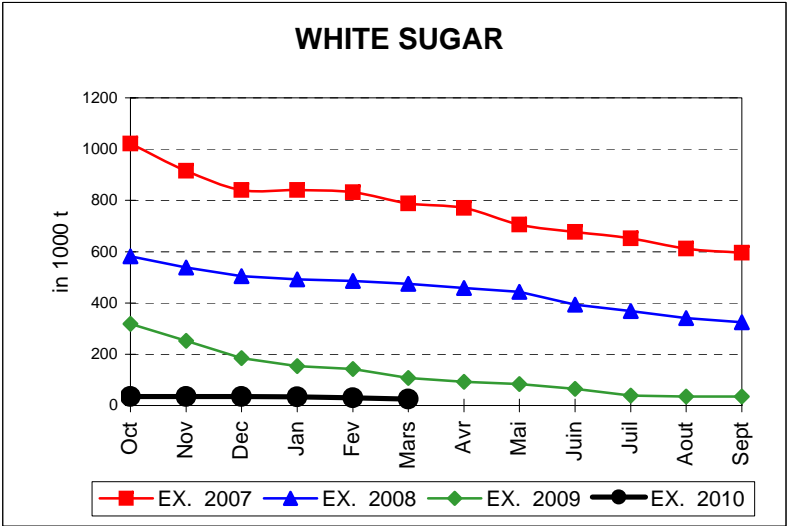
EVOLUTION IN QUANTITIES OF PUBLIC INTERVENTION STOCKS



EVOLUTION IN QUANTITIES OF PUBLIC INTERVENTION STOCKS

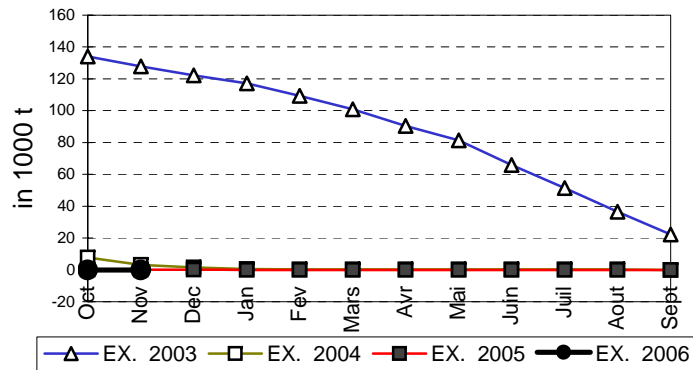


EVOLUTION IN QUANTITIES OF PUBLIC INTERVENTION STOCKS

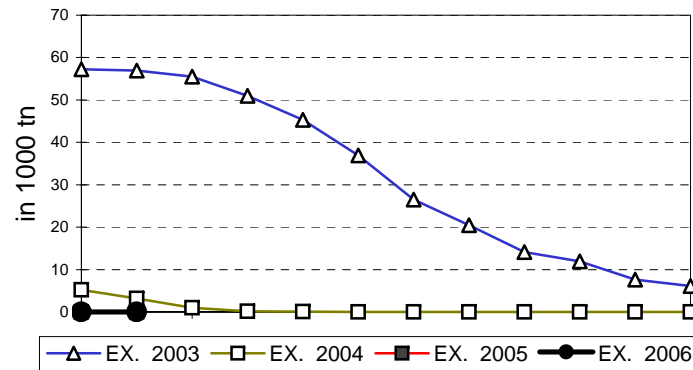


EVOLUTION IN QUANTITIES OF PUBLIC INTERVENTION STOCKS

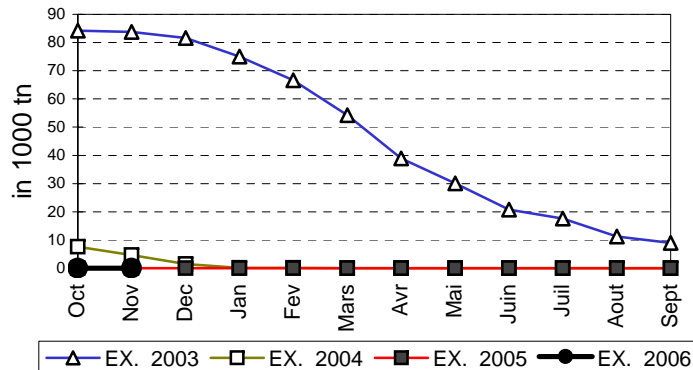
VIANDE BOVINE CARCASSES



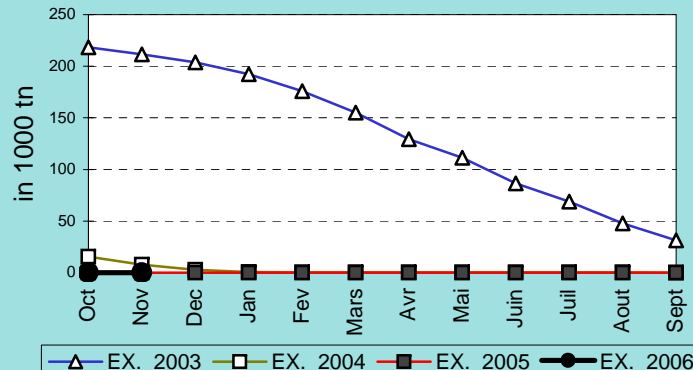
VIANDE BOVINE DESOSSEE



VIANDE DESOSSEE EN EQUIVALENT CARCASSES



TOTAL VIANDE EN EQUIVALENT CARCASSES



COMPARED WITH PREVIOUS MONTH

| EU TOTAL | 31-mar-10 | | 28-feb-10 | | CHANGE IN QTY | | CHANGE IN VALUE | |
|-------------------------------|------------------------|----------------------|------------------------|--------------------|------------------------|---------------|-----------------------|---------------|
| | QUANTITY (tn or hl) | VALUE (in Euro) | QUANTITY (tn or hl) | VALUE (In Euro) | ABSOLUTE (tn or hl) | % | ABSOLUTE (in Euro) | % |
| CLICK TOTALS FOR GRAPHICS | (a) | (b) | (c) | (d) | (e)=(a)-(c) | (f)=(e)/(c)*% | (g)=(b)-(d) | (h)=(g)/(d)*% |
| Blé panifiable | 182.189 | 18.781.069 | 164.829 | 17.006.468 | 17.360 | 11% | 1.774.601 | 10% |
| Orge | 3.647.499 | 368.864.395 | 3.039.505 | 306.846.410 | 607.994 | 20% | 62.017.986 | 20% |
| Seigle | | | | | | | | |
| Sorgho | | | 279 | 28.232 | -279 | -100% | -28.232 | -100% |
| Mais | 554.144 | 56.310.301 | 554.144 | 56.310.301 | | | | |
| TOTAL CEREALES | 4.383.832 | 443.955.765 | 3.758.756 | 380.191.411 | 625.076 | 17% | 63.764.355 | 17% |
| TOTAL RIZ | | | | | | | | |
| Alcool Public | 1.104.823 | 40.991.252 | 1.141.289 | 42.340.223 | -36.466 | -3% | -1.348.971 | -3% |
| Alcool Mixte | 4.779 | 70.003 | 4.839 | 71.046 | -59 | -1% | -1.043 | -1% |
| TOTAL ALCOOL (HL 100%) | 1.109.602 | 41.061.255 | 1.146.127 | 42.411.269 | -36.525 | -3% | -1.350.014 | -3% |
| LEP | 257.423 | 384.093.592 | 257.669 | 384.460.538 | -245 | 0% | -366.945 | 0% |
| Beurre | 75.893 | 165.306.621 | 76.286 | 166.162.631 | -393 | -1% | -856.010 | -1% |
| TOTAL LAIT ET BEURRE | 333.317 | 549.400.214 | 333.954 | 550.623.169 | -637 | 0% | -1.222.955 | 0% |
| Sucre blanc | 24.457 | 7.887.299 | 29.978 | 9.693.652 | -5.520 | -18% | -1.806.353 | -19% |
| Sucre brut | | | | | | | | |
| TOTAL SUCRE | 24.457 | 7.887.299 | 29.978 | 9.693.652 | -5.520 | -18% | -1.806.353 | -19% |
| Bov. carc. | | | | | | | | |
| Bov. des. | | | | | | | | |
| Eq. carc. | | | | | | | | |
| TOTAL EQ. CARCASSES | | | | | | | | |
| GRAND TOTAL | | 1.042.304.533 | | 982.919.500 | | | 59.385.033 | 6% |

SOURCE : The declarations of the Member States before controls.

COMPARED WITH PREVIOUS YEAR

| EU TOTAL | 31-mar-10 | | 31-mar-09 | | CHANGE IN QTY | | CHANGE IN VALUE | |
|-------------------------------|------------------------|----------------------|------------------------|--------------------|------------------------|---------------|-----------------------|---------------|
| | QUANTITY (tn or hl) | VALUE (in Euro) | QUANTITY (tn or hl) | VALUE (In Euro) | ABSOLUTE (tn or hl) | % | ABSOLUTE (in Euro) | % |
| CLICK TOTALS FOR GRAPHICS | (a) | (b) | (c) | (d) | (e)=(a)-(c) | (f)=(e)/(c)*% | (g)=(b)-(d) | (h)=(g)/(d)*% |
| Blé panifiable | 182.189 | 18.781.069 | 24.059 | 2.695.959 | 158.130 | 657% | 16.085.110 | 597% |
| Orge | 3.647.499 | 368.864.395 | 200.629 | 21.095.464 | 3.446.870 | 1718% | 347.768.931 | 1649% |
| Seigle | | | | | | | | |
| Sorgho | | | | | | | | |
| Mais | 554.144 | 56.310.301 | 274.015 | 28.056.236 | 280.128 | 102% | 28.254.065 | 101% |
| TOTAL CEREALES | 4.383.832 | 443.955.765 | 498.704 | 51.847.659 | 3.885.128 | 779% | 392.108.106 | 756% |
| TOTAL RIZ | | | | | | | | |
| Alcool Public | 1.104.823 | 40.991.252 | 2.069.475 | 88.331.742 | -964.652 | -47% | -47.340.490 | -54% |
| Alcool Mixte | 4.779 | 70.003 | 11.894 | 184.533 | -7.115 | -60% | -114.531 | -62% |
| TOTAL ALCOOL (HL 100%) | 1.109.602 | 41.061.255 | 2.081.369 | 88.516.276 | -971.767 | -47% | -47.455.021 | -54% |
| LEP | 257.423 | 384.093.592 | 40.063 | 68.210.311 | 217.361 | 543% | 315.883.281 | 463% |
| Beurre | 75.893 | 165.306.621 | 26.598 | 58.863.167 | 49.295 | 185% | 106.443.454 | 181% |
| TOTAL LAIT ET BEURRE | 333.317 | 549.400.214 | 66.661 | 127.073.478 | 266.656 | 400% | 422.326.736 | 332% |
| Sucre blanc | 24.457 | 7.887.299 | 107.765 | 35.580.188 | -83.307 | -77% | -27.692.889 | -78% |
| Sucre brut | | | 1.661 | 401.616 | -1.661 | -100% | -401.616 | -100% |
| TOTAL SUCRE | 24.457 | 7.887.299 | 109.426 | 35.981.804 | -84.969 | -78% | -28.094.505 | -78% |
| Bov. carc. | | | | | | | | |
| Bov. des. | | | | | | | | |
| Eq. carc. | | | | | | | | |
| TOTAL EQ. CARCASSES | | | | | | | | |
| GRAND TOTAL | | 1.042.304.533 | | 303.419.217 | | | 738.885.316 | 244% |

SOURCE :

The declarations of the Member States before controls.

| THE PUBLIC STORAGE FLASH REPORT AS AT | | | | | | 31-mar-10 | | | |
|---------------------------------------|----------------------------|-------------------|----------------------------|-------------------|----------------------------|---------------|--------------------|---------------|--|
| ESPAÑA | | | | | | | | | |
| PRODUCTS | YEAR-TO-DATE | | OPENING BALANCE | | CHANGE IN QTY | | CHANGE IN VALUE | | |
| | QUANTITY (in tonnes or hl) | VALUE (in Euro) | QUANTITY (in tonnes or hl) | VALUE (in Euro) | ABSOLUTE (in tonnes or hl) | % | ABSOLUTE (in Euro) | % | |
| | (a) | (b) | (c) | (d) | (e)=(a)-(c) | (f)=(e)/(c)*% | (g)=(b)-(d) | (h)=(g)/(d)*% | |
| Ble panifiable | | | | | | | | | |
| Orge | | | | | | | | | |
| Seigle | | | | | | | | | |
| Sorgho | | | | | | | | | |
| Mais | | | | | | | | | |
| TOTAL CEREALES | | | | | | | | | |
| RIZ | | | | | | | | | |
| Alcool Public | 548.377 | 20.410.602 | 574.043 | 21.365.391 | -25.666 | -4% | -954.789 | -4% | |
| Alcool Mixte | | | | | | | | | |
| TOT. ALCOOL (HL) | 548.377 | 20.410.602 | 574.043 | 21.365.391 | -25.666 | -4% | -954.789 | -4% | |
| LEP | 1.382 | 2.105.975 | 1.603 | 2.442.752 | -221 | -14% | -336.777 | -14% | |
| Beurre | 9.335 | 20.336.764 | 9.335 | 20.336.778 | -14 | 0% | -14 | 0% | |
| TOTAL L & B | 10.717 | 22.442.739 | 10.936 | 22.779.530 | -221 | -2% | -336.791 | -1% | |
| Sucre Blanc | | | | | | | | | |
| Sucre Brut | | | | | | | | | |
| TOTAL SUCRE | | | | | | | | | |
| Bov. carc. | | | | | | | | | |
| Bov. des. | | | | | | | | | |
| Eq. carc. | | | | | | | | | |
| TOTAL EQ. CARC. | | | | | | | | | |
| GRAND TOTAL | | 42.853.340 | | 44.144.921 | | | -1.291.580 | -3% | |

31-mar-10

