

CHOOSE COUNTRY

EU TOTAL	YEAR-TO-DATE		OPENING BALANCE (1)		CHANGE IN QTY		CHANGE IN VALUE	
	QUANTITY (tn or hl)	VALUE (in Euro)	QUANTITY (tn or hl)	VALUE (in Euro)	ABSOLUTE (tn or hl)	%	ABSOLUTE (in Euro)	%
CLICK TOTALS FOR GRAPHICS	(a)	(b)	(c)	(d)	(e)=(a)-(c)	(f)=(e)/(c)*%	(g)=(b)-(d)	(h)=(g)/(d)*%
Blé panifiable	145.514	14.739.039	234.577	23.710.769	-89.062	-38%	-8.971.730	-38%
Orge	2.798.335	284.207.428	5.326.162	540.451.972	-2.527.827	-47%	-256.244.544	-47%
Seigle								
Sorgho								
Mais			3.142	318.234	-3.142	-100%	-318.234	-100%
<b>TOTAL CEREALES</b>	<b>2.943.849</b>	<b>298.946.467</b>	<b>5.563.880</b>	<b>564.480.975</b>	<b>-2.620.031</b>	<b>-47%</b>	<b>-265.534.508</b>	<b>-47%</b>
<b>TOTAL RIZ</b>								
Alcool Public	310.188	10.546.737	628.630	21.369.957	-318.442	-51%	-10.823.220	-51%
Alcool Mixte			1.173	4.645	-1.173	-100%	-4.645	-100%
<b>TOTAL ALCOOL (HL 100%)</b>	<b>310.188</b>	<b>10.546.737</b>	<b>629.803</b>	<b>21.374.602</b>	<b>-319.615</b>	<b>-51%</b>	<b>-10.827.865</b>	<b>-51%</b>
LEP	147.390	219.742.398	197.223	294.161.988	-49.833	-25%	-74.419.590	-25%
Beurre	1.435	3.103.957	1.545	3.343.770	-110	-7%	-239.813	-7%
<b>TOTAL LAIT ET BEURRE</b>	<b>148.825</b>	<b>222.846.356</b>	<b>198.769</b>	<b>297.505.758</b>	<b>-49.943</b>	<b>-25%</b>	<b>-74.659.403</b>	<b>-25%</b>
Sucre Blanc			9	3.052	-9	-100%	-3.052	-100%
Sucre Brut								
<b>TOTAL SUCRE</b>			<b>9</b>	<b>3.052</b>	<b>-9</b>	<b>-100%</b>	<b>-3.052</b>	<b>-100%</b>
Bov. carc.								
Bov. des.								
Eq. carc.								
<b>TOTAL EQ. CARCASSES</b>								
<b>GRAND TOTAL</b>		<b>532.339.559</b>		<b>883.364.387</b>			<b>-351.024.827</b>	<b>-40%</b>

SOURCE : The declarations of the Member States before controls.

(1) Period 13/2010 annual declaration

quantities are expressed in  
tonnes (alcohol in hl 100%)

ACCOUNTING VALUE OF THE PUBLIC INTERVENTION STOCKS AS AT :  
(BEFORE THE COMPLEMENTARY DEPRECIATION)

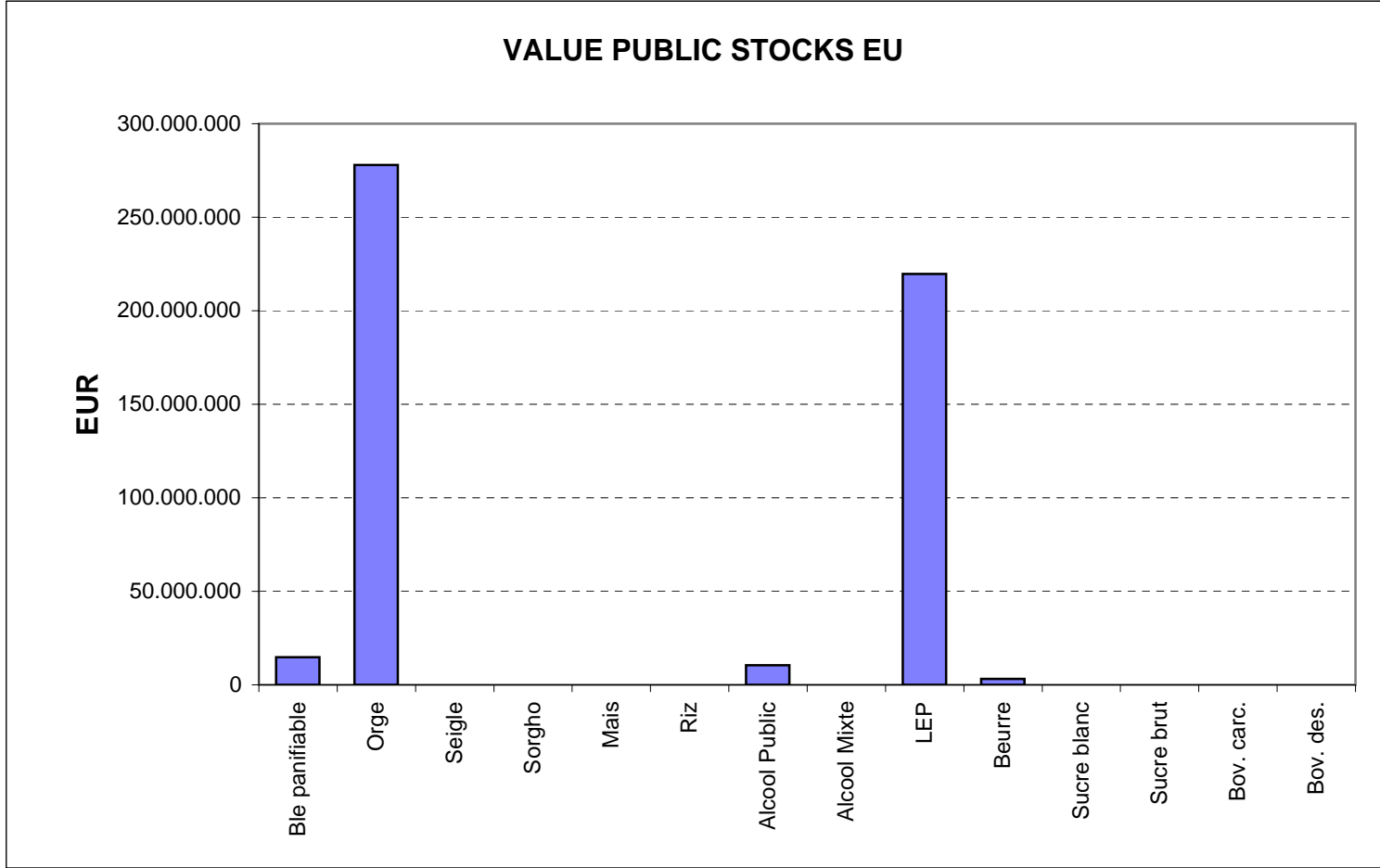
31-mar-11

AGRI I.4

J. FLORET tel. 53236

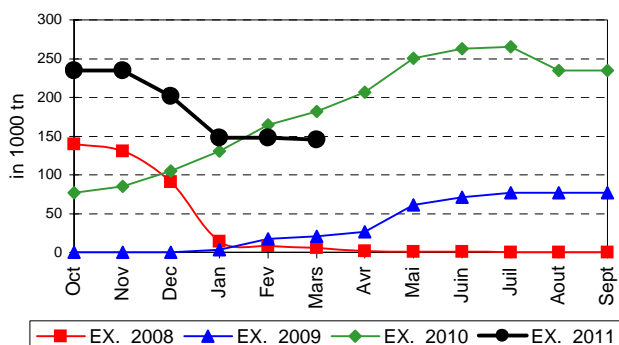
Produits		BE	BG	CZ	DK	DE	EE	IE	EL	ES	FR	IT	CY	LV	LT	LU	HU	MT	NL	OS	PL	PO	RO	SI	SK	FIN	SE	UK	TOTAL	
BLE PANIF	quant.		3.587	195											91	114.583									27.059					145.514
	valeur		355.892	19.736											8.867	11.607.227										2.747.318				
ORGE	quant.	21.526	42.101	153.927		604.871	27.303				827.202			19.443	60.562		269.133		8.954		256.812		61.433		75.572	165.473	110.422	93.602	2.798.335	
	valeur	2.185.528	4.348.146	16.231.550		60.789.523	2.768.296				84.192.586			1.959.234	6.101.048		27.451.529			909.073		25.894.388		6.273.544		7.692.456	16.904.748	11.235.423	9.270.355	284.207.428
SEIGLE	quant.																													
	valeur																													
SORGHO	quant.																													
	valeur																													
MAIS	quant.																													
	valeur																													
TOT.CER	quant.	21.526	45.687	154.121		604.871	27.303				827.202			19.443	60.653		383.715			8.954	256.812		61.433		102.631	165.473	110.422	93.602	2.943.849	
RIZ	quant.																													
	valeur																													
ALC.P.	quant.								60.181	124.766			7.112				54.667					63.462								310.188
	valeur								2.046.144	4.243.302			241.520				1.858.691					2.157.079								10.546.737
ALC.M.	quant.																													
	valeur																													
TOT.ALC.	quant.								60.181	124.766			7.112				54.667					63.462								310.188
	valeur																													
LEP	quant.	11.153		759		53.005	1.365	32.020			22.438				4.282				3.527		2.597	607				845	191	14.601	147.390	
	valeur	16.515.735		1.195.974		78.865.991	1.952.961	47.834.134			33.618.631				6.417.337				5.272.168		3.850.494	909.158				1.265.533	285.723	21.758.559	219.742.398	
BEURRE	quant.						182								1.254															1.435
	valeur						371.083								2.732.875															3.103.957
TOT L&B	quant.	11.153		759		53.005	1.547	32.020			22.438				5.535				3.527		2.597	607				845	191	14.601	148.825	
	valeur																													
S. BLANC	quant.																													
	valeur																													
S. BRUT	quant.																													
	valeur																													
TOT. SUC	quant.																													
BOV.QUA	quant.																													
	valeur																													
BOV.DES	quant.																													
	valeur																													
EQ. CARC	quant.																													
TOT EQ	quant.																													
EU TOTAL	valeur	18.701.263	4.704.038	17.447.260		139.655.514	5.092.339	47.834.134	2.046.144	4.243.302	117.811.217		241.520	1.959.234	15.260.127	40.917.447		5.272.168	909.073	29.744.882	3.066.237	6.273.544		10.439.774	18.170.281	11.521.146	31.028.914	532.339.559		

**PUBLIC INTERVENTION STOCKS**

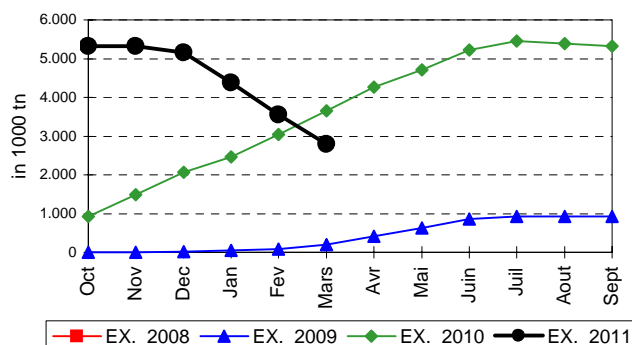


## EVOLUTION IN QUANTITIES OF PUBLIC INTERVENTION STOCKS

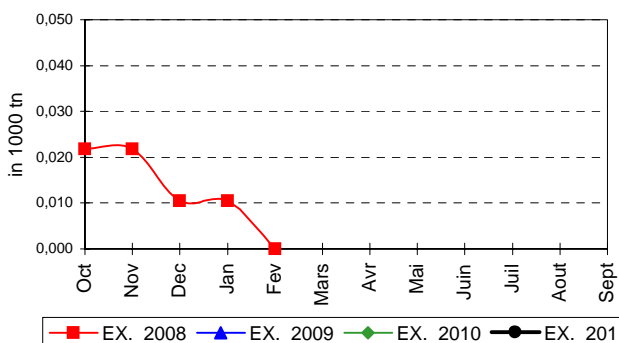
### BLE TENDRE PANIFIABLE



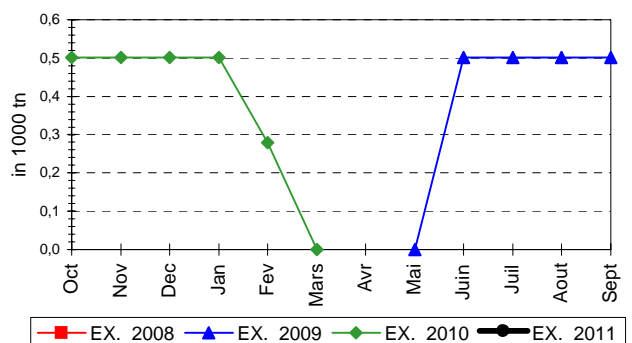
### ORGE



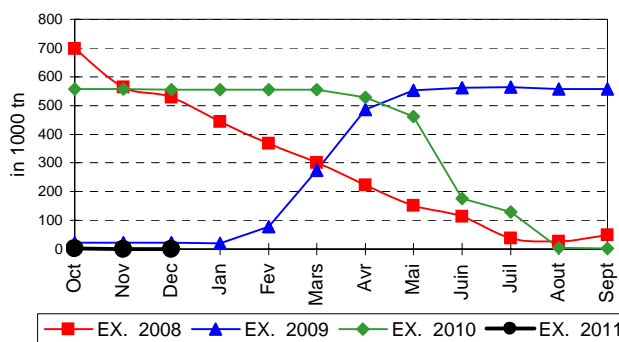
### SEIGLE



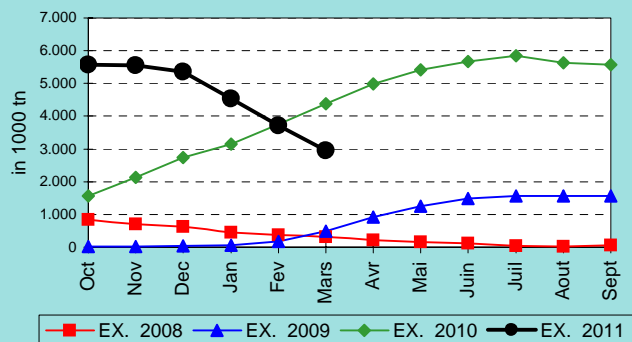
### SORGHO



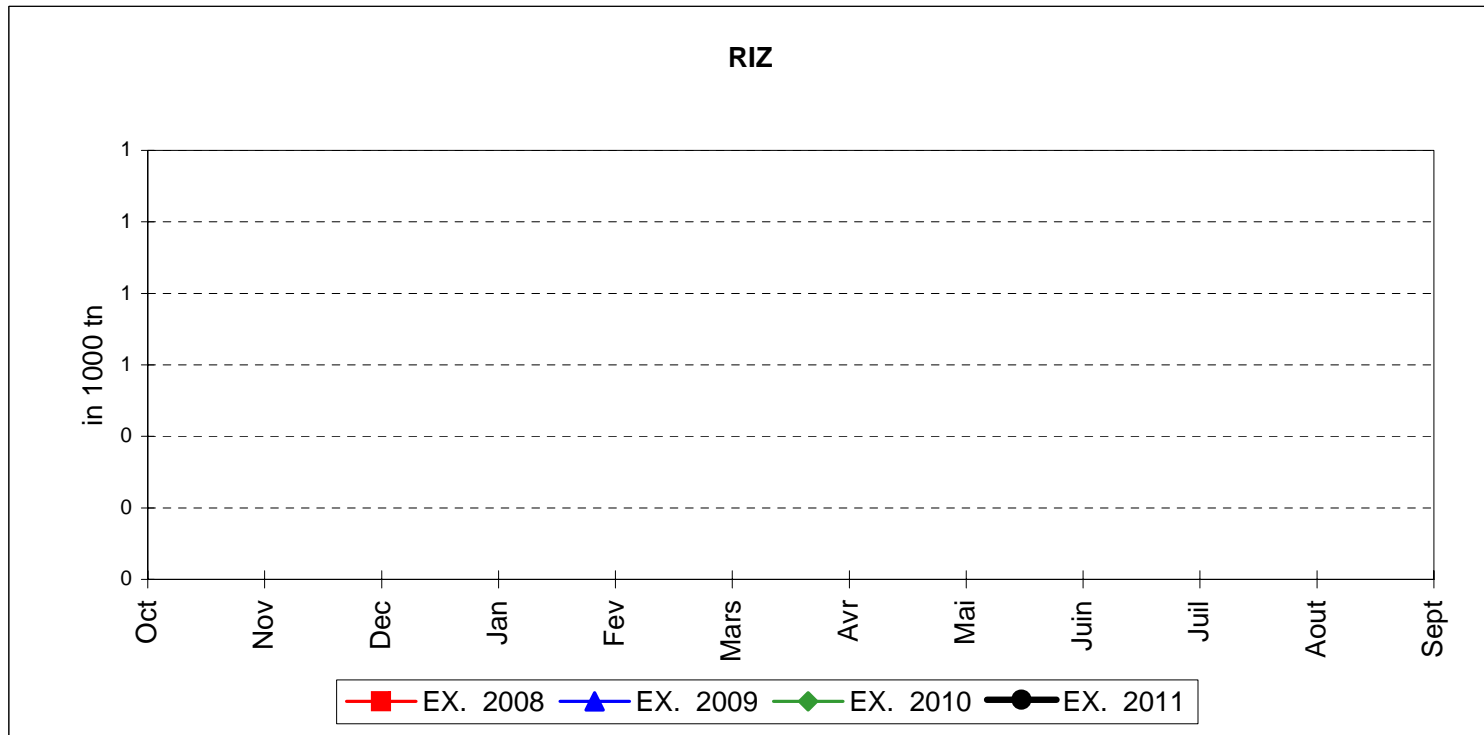
### MAIS



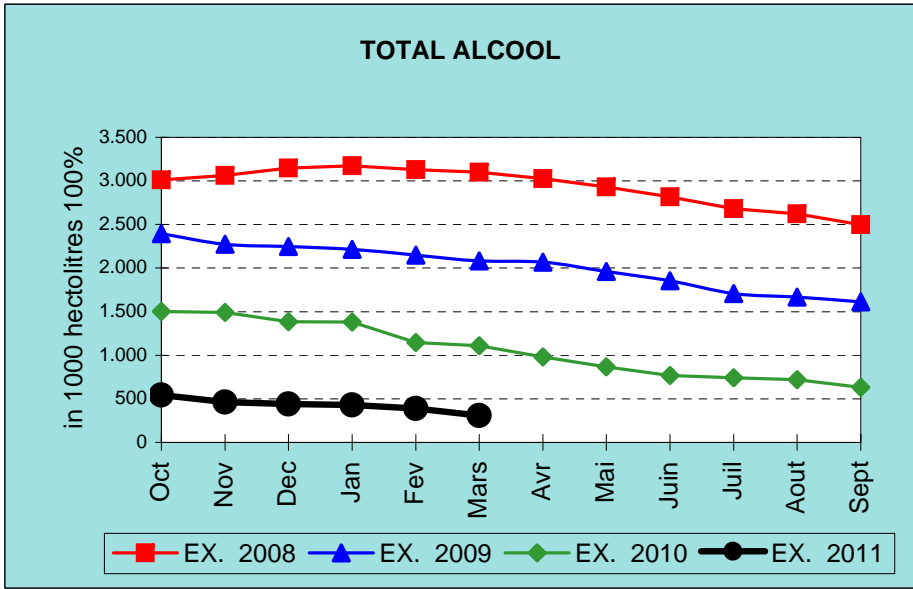
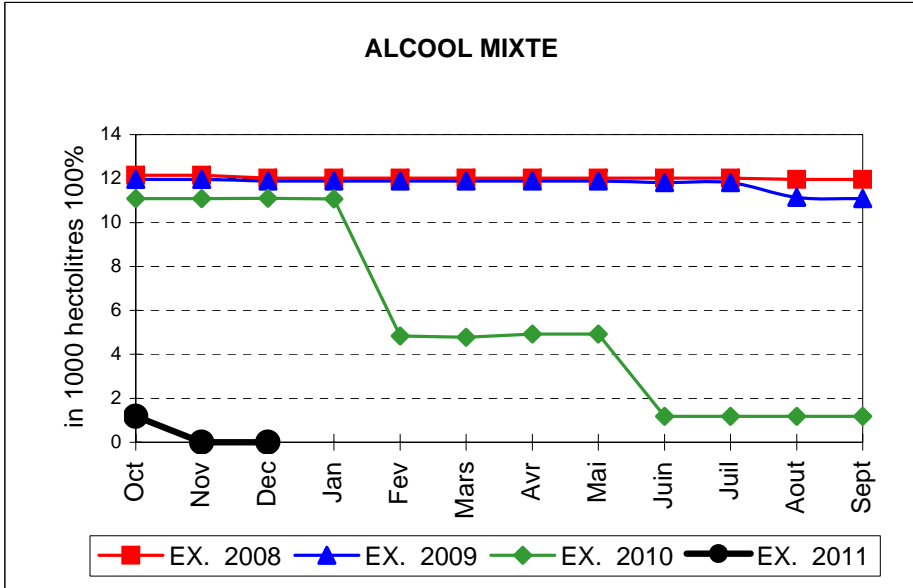
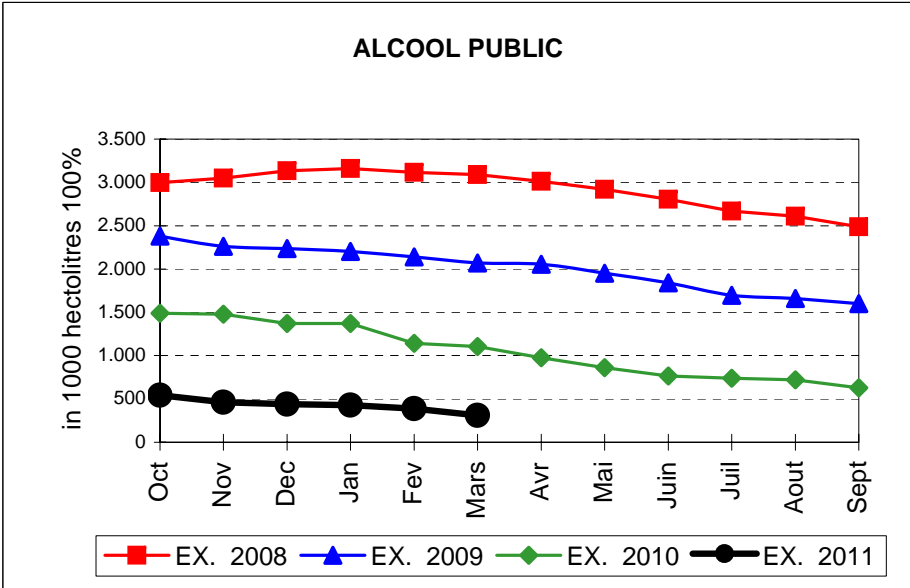
### TOTAL CEREALES



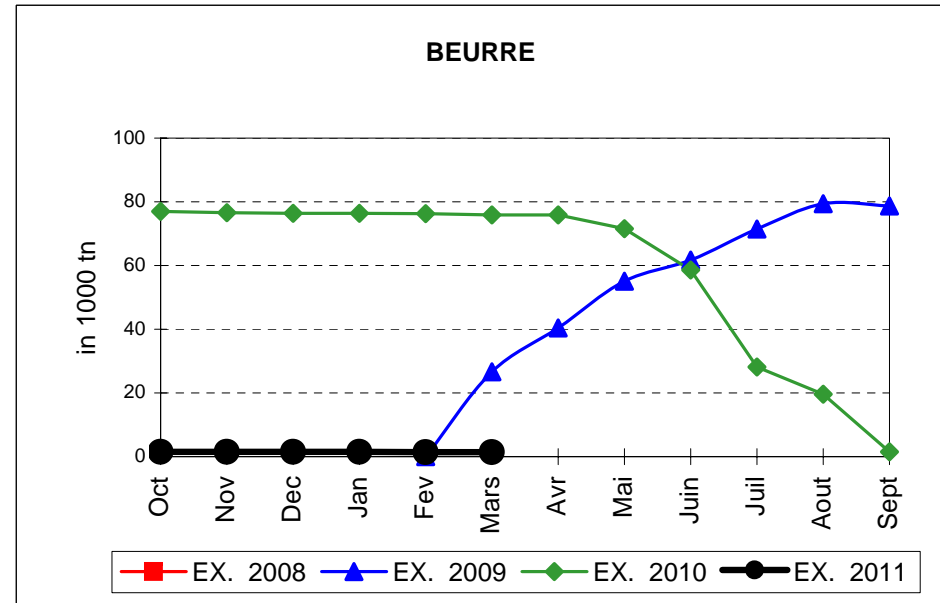
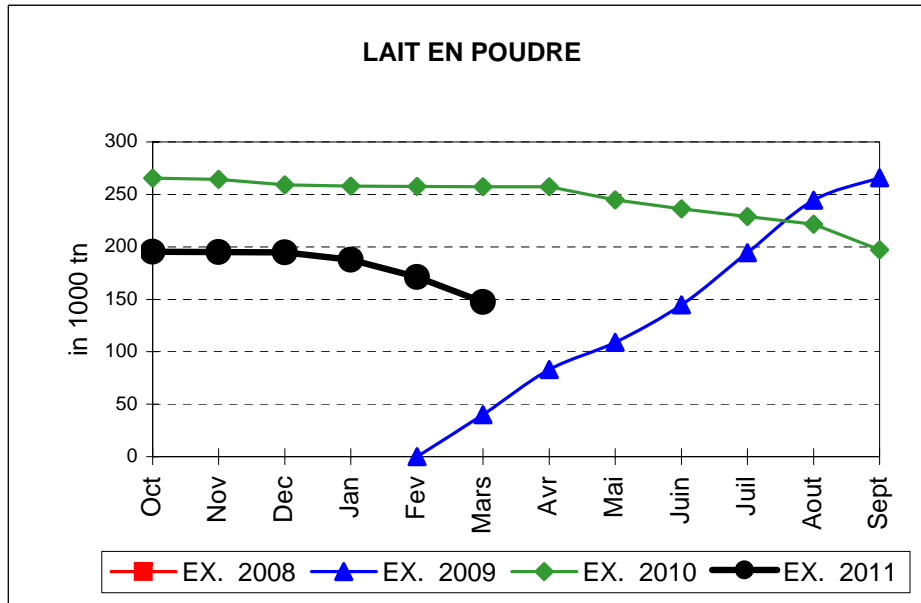
## EVOLUTION IN QUANTITIES OF PUBLIC INTERVENTION STOCKS



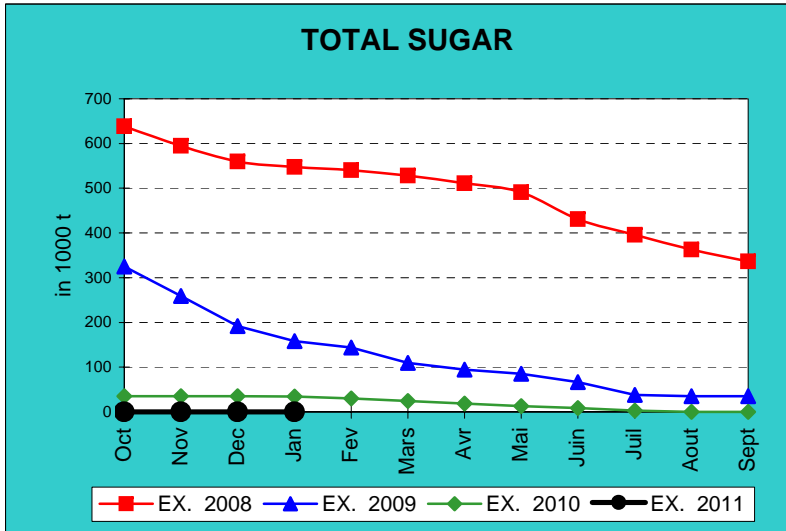
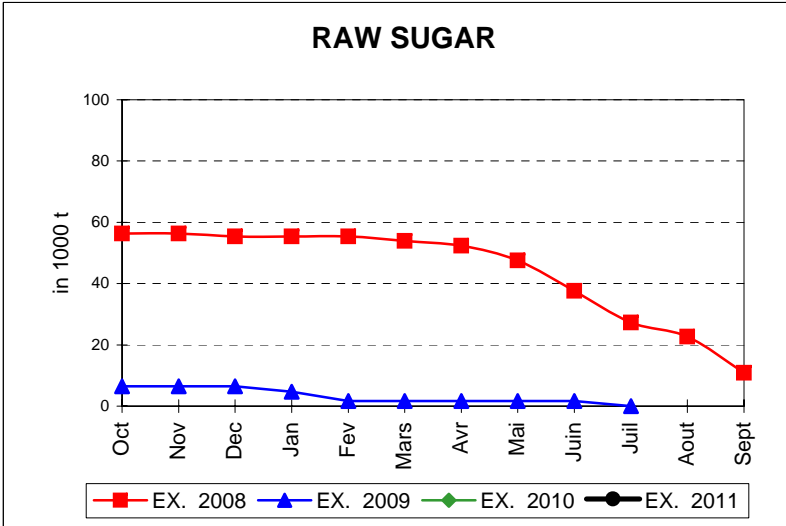
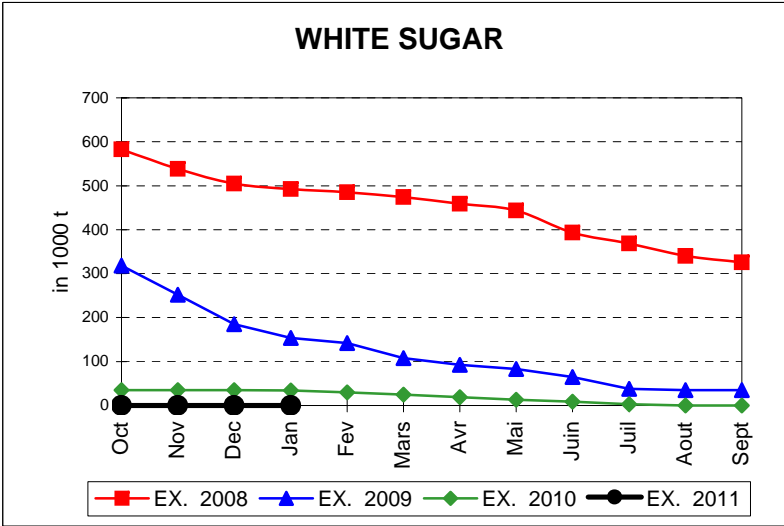
# EVOLUTION IN QUANTITIES OF PUBLIC INTERVENTION STOCKS



## EVOLUTION IN QUANTITIES OF PUBLIC INTERVENTION STOCKS



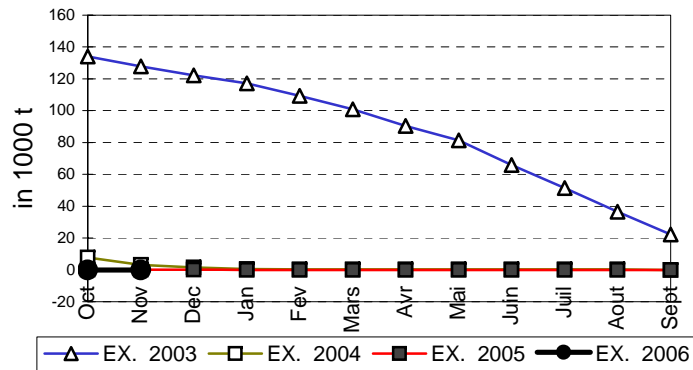
# EVOLUTION IN QUANTITIES OF PUBLIC INTERVENTION STOCKS



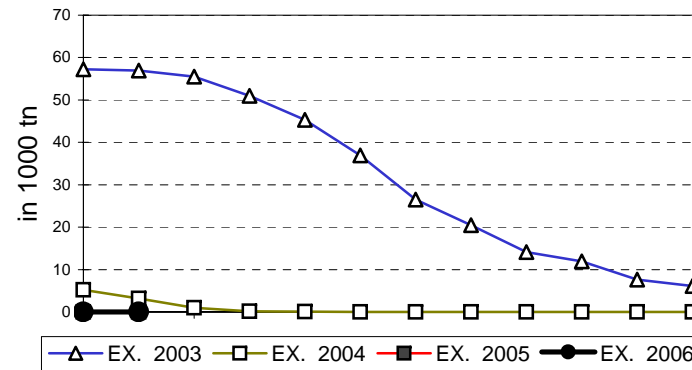


## EVOLUTION IN QUANTITIES OF PUBLIC INTERVENTION STOCKS

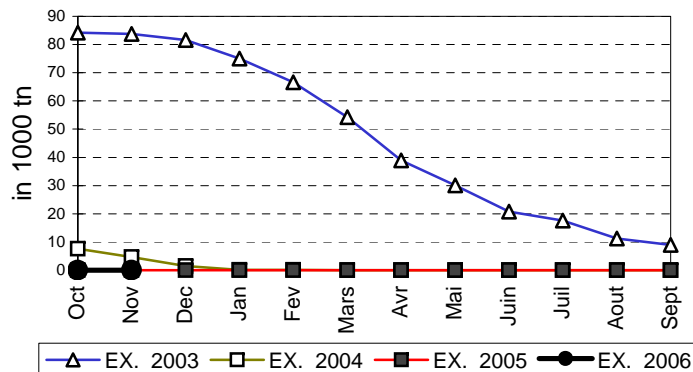
### VIANDE BOVINE CARCASSES



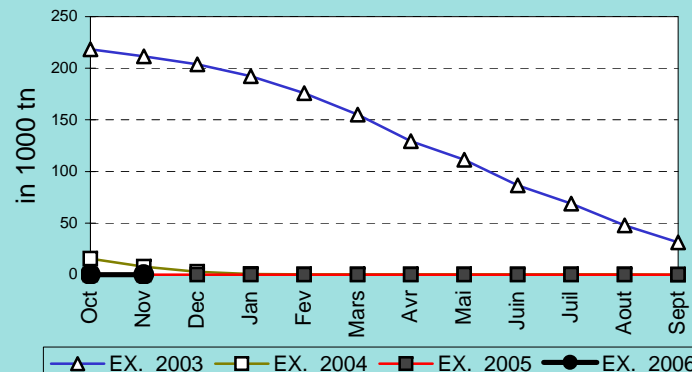
### VIANDE BOVINE DESOSSEE



### VIANDE DESOSSEE EN EQUIVALENT CARCASSES



### TOTAL VIANDE EN EQUIVALENT CARCASSES



## COMPARED WITH PREVIOUS MONTH

EU TOTAL	31-mar-11		28-feb-11		CHANGE IN QTY		CHANGE IN VALUE	
	QUANTITY (tn or hl)	VALUE (in Euro)	QUANTITY (tn or hl)	VALUE (in Euro)	ABSOLUTE (tn or hl)	%	ABSOLUTE (in Euro)	%
CLICK TOTALS FOR GRAPHICS	(a)	(b)	(c)	(d)	(e)=(a)-(c)	(f)=(e)/(c)*%	(g)=(b)-(d)	(h)=(g)/(d)*%
Blé panifiable	145.514	14.739.039	147.916	14.982.173	-2.402	-2%	-243.134	-2%
Orge	2.798.335	284.207.428	3.557.584	361.108.306	-759.249	-21%	-76.900.878	-21%
Seigle								
Sorgho								
Mais								
<b>TOTAL CEREALES</b>	<b>2.943.849</b>	<b>298.946.467</b>	<b>3.705.500</b>	<b>376.090.479</b>	<b>-761.651</b>	<b>-21%</b>	<b>-77.144.012</b>	<b>-21%</b>
<b>TOTAL RIZ</b>								
Alcool Public	310.188	10.546.737	388.719	13.217.378	-78.530	-20%	-2.670.641	-20%
Alcool Mixte								
<b>TOTAL ALCOOL (HL 100%)</b>	<b>310.188</b>	<b>10.546.737</b>	<b>388.719</b>	<b>13.217.378</b>	<b>-78.530</b>	<b>-20%</b>	<b>-2.670.641</b>	<b>-20%</b>
LEP	147.390	219.742.398	171.140	255.247.580	-23.751	-14%	-35.505.182	-14%
Beurre	1.435	3.103.957	1.435	3.103.957				
<b>TOTAL LAIT ET BEURRE</b>	<b>148.825</b>	<b>222.846.356</b>	<b>172.576</b>	<b>258.351.538</b>	<b>-23.751</b>	<b>-14%</b>	<b>-35.505.182</b>	<b>-14%</b>
Sucre blanc								
Sucre brut								
<b>TOTAL SUCRE</b>								
Bov. carc.								
Bov. des.								
Eq. carc.								
<b>TOTAL EQ. CARCASSES</b>								
<b>GRAND TOTAL</b>		<b>532.339.559</b>		<b>647.659.394</b>			<b>-115.319.835</b>	<b>-18%</b>

SOURCE : The declarations of the Member States before controls.

## COMPARED WITH PREVIOUS YEAR

EU TOTAL	31-mar-11		31-mar-10		CHANGE IN QTY		CHANGE IN VALUE	
	QUANTITY (tn or hl)	VALUE (in Euro)	QUANTITY (tn or hl)	VALUE (In Euro)	ABSOLUTE (tn or hl)	%	ABSOLUTE (in Euro)	%
CLICK TOTALS FOR GRAPHICS	(a)	(b)	(c)	(d)	(e)=(a)-(c)	(f)=(e)/(c)*%	(g)=(b)-(d)	(h)=(g)/(d)*%
<b>Blé panifiable</b>	145.514	14.739.039	182.189	18.781.069	-36.675	-20%	-4.042.030	-22%
<b>Orge</b>	2.798.335	284.207.428	3.647.499	368.864.395	-849.164	-23%	-84.656.968	-23%
<b>Seigle</b>								
<b>Sorgho</b>								
<b>Mais</b>			554.144	56.310.301	-554.144	-100%	-56.310.301	-100%
<b>TOTAL CEREALES</b>	<b>2.943.849</b>	<b>298.946.467</b>	<b>4.383.832</b>	<b>443.955.765</b>	<b>-1.439.982</b>	<b>-33%</b>	<b>-145.009.298</b>	<b>-33%</b>
<b>TOTAL RIZ</b>								
<b>Alcool Public</b>	310.188	10.546.737	1.104.823	40.991.252	-794.634	-72%	-30.444.515	-74%
<b>Alcool Mixte</b>			4.779	70.003	-4.779	-100%	-70.003	-100%
<b>TOTAL ALCOOL (HL 100%)</b>	<b>310.188</b>	<b>10.546.737</b>	<b>1.109.602</b>	<b>41.061.255</b>	<b>-799.414</b>	<b>-72%</b>	<b>-30.514.518</b>	<b>-74%</b>
<b>LEP</b>	147.390	219.742.398	257.423	384.093.592	-110.034	-43%	-164.351.194	-43%
<b>Beurre</b>	1.435	3.103.957	75.893	165.306.621	-74.458	-98%	-162.202.664	-98%
<b>TOTAL LAIT ET BEURRE</b>	<b>148.825</b>	<b>222.846.356</b>	<b>333.317</b>	<b>549.400.214</b>	<b>-184.492</b>	<b>-55%</b>	<b>-326.553.858</b>	<b>-59%</b>
<b>Sucre blanc</b>			24.457	7.887.299	-24.457	-100%	-7.887.299	-100%
<b>Sucre brut</b>								
<b>TOTAL SUCRE</b>			<b>24.457</b>	<b>7.887.299</b>	<b>-24.457</b>	<b>-100%</b>	<b>-7.887.299</b>	<b>-100%</b>
<b>Bov. carc.</b>								
<b>Bov. des.</b>								
<b>Eq. carc.</b>								
<b>TOTAL EQ. CARCASSES</b>								
<b>GRAND TOTAL</b>		<b>532.339.559</b>		<b>1.042.304.533</b>			<b>-509.964.973</b>	<b>-49%</b>

SOURCE :

The declarations of the Member States before controls.

THE PUBLIC STORAGE FLASH REPORT AS AT										31-mar-11
ESPAÑA										
PRODUCTS	YEAR-TO-DATE		OPENING BALANCE		CHANGE IN QTY		CHANGE IN VALUE			
	QUANTITY (in tonnes or hl)	VALUE (in Euro)	QUANTITY (in tonnes or hl)	VALUE (in Euro)	ABSOLUTE (in tonnes or hl)	%	ABSOLUTE (in Euro)	%		
	(a)	(b)	(c)	(d)	(e)=(a)-(c)	(f)=(e)/(c)*%	(g)=(b)-(d)	(h)=(g)/(d)*%		
Ble panifiable										
Orge										
Seigle										
Sorgho										
Mais										
<b>TOTAL CEREALES</b>										
<b>RIZ</b>										
Alcool Public	124.766	4.243.302	373.725	12.711.227	-248.959	-67%	-8.467.925	-67%		
Alcool Mixte										
<b>TOT. ALCOOL (HL)</b>	<b>124.766</b>	<b>4.243.302</b>	<b>373.725</b>	<b>12.711.227</b>	<b>-248.959</b>	<b>-67%</b>	<b>-8.467.925</b>	<b>-67%</b>		
LEP										
Beurre										
<b>TOTAL L &amp; B</b>										
Sucre Blanc										
Sucre Brut										
<b>TOTAL SUCRE</b>										
Bov. carc.										
Bov. des.										
Eq. carc.										
<b>TOTAL EQ. CARC.</b>										
<b>GRAND TOTAL</b>		<b>4.243.302</b>		<b>12.711.227</b>			<b>-8.467.925</b>	<b>-67%</b>		

31-mar-11

