

CHOOSE COUNTRY

EU TOTAL	YEAR-TO-DATE		OPENING BALANCE (1)		CHANGE IN QTY		CHANGE IN VALUE	
	QUANTITY (tn or hl)	VALUE (in Euro)	QUANTITY (tn or hl)	VALUE (in Euro)	ABSOLUTE (tn or hl)	%	ABSOLUTE (in Euro)	%
CLICK TOTALS FOR GRAPHICS	(a)	(b)	(c)	(d)	(e)=(a)-(c)	(f)=(e)/(c)*%	(g)=(b)-(d)	(h)=(g)/(d)*%
Blé panifiable								
Orge	162.104	16.397.398	165.326	16.717.611	-3.222	-2%	-320.214	-2%
Seigle								
Sorgho								
Mais								
<b>TOTAL CEREALES</b>	<b>162.104</b>	<b>16.397.398</b>	<b>165.326</b>	<b>16.717.611</b>	<b>-3.222</b>	<b>-2%</b>	<b>-320.214</b>	<b>-2%</b>
<b>TOTAL RIZ</b>								
Alcool Public	2.791	78.263	55.857	1.566.771	-53.066	-95%	-1.488.508	-95%
Alcool Mixte								
<b>TOTAL ALCOOL (HL 100%)</b>	<b>2.791</b>	<b>78.263</b>	<b>55.857</b>	<b>1.566.771</b>	<b>-53.066</b>	<b>-95%</b>	<b>-1.488.508</b>	<b>-95%</b>
LEP	2.993	4.421.689	53.556	79.832.007	-50.563	-94%	-75.410.318	-94%
Beurre	1	2.922	1	2.922				
<b>TOTAL LAIT ET BEURRE</b>	<b>2.994</b>	<b>4.424.611</b>	<b>53.558</b>	<b>79.834.930</b>	<b>-50.563</b>	<b>-94%</b>	<b>-75.410.318</b>	<b>-94%</b>
Sucre Blanc								
Sucre Brut								
<b>TOTAL SUCRE</b>								
Bov. carc.								
Bov. des.								
Eq. carc.								
<b>TOTAL EQ. CARCASSES</b>								
<b>GRAND TOTAL</b>		<b>20.900.273</b>		<b>98.119.313</b>			<b>-77.219.040</b>	<b>-79%</b>

SOURCE : The declarations of the Member States before controls.

(1) Period 13/2011 annual declaration

quantities are expressed in  
tonnes (alcohol in hl 100%)

ACCOUNTING VALUE OF THE PUBLIC INTERVENTION STOCKS AS AT :  
(BEFORE THE COMPLEMENTARY DEPRECIATION)

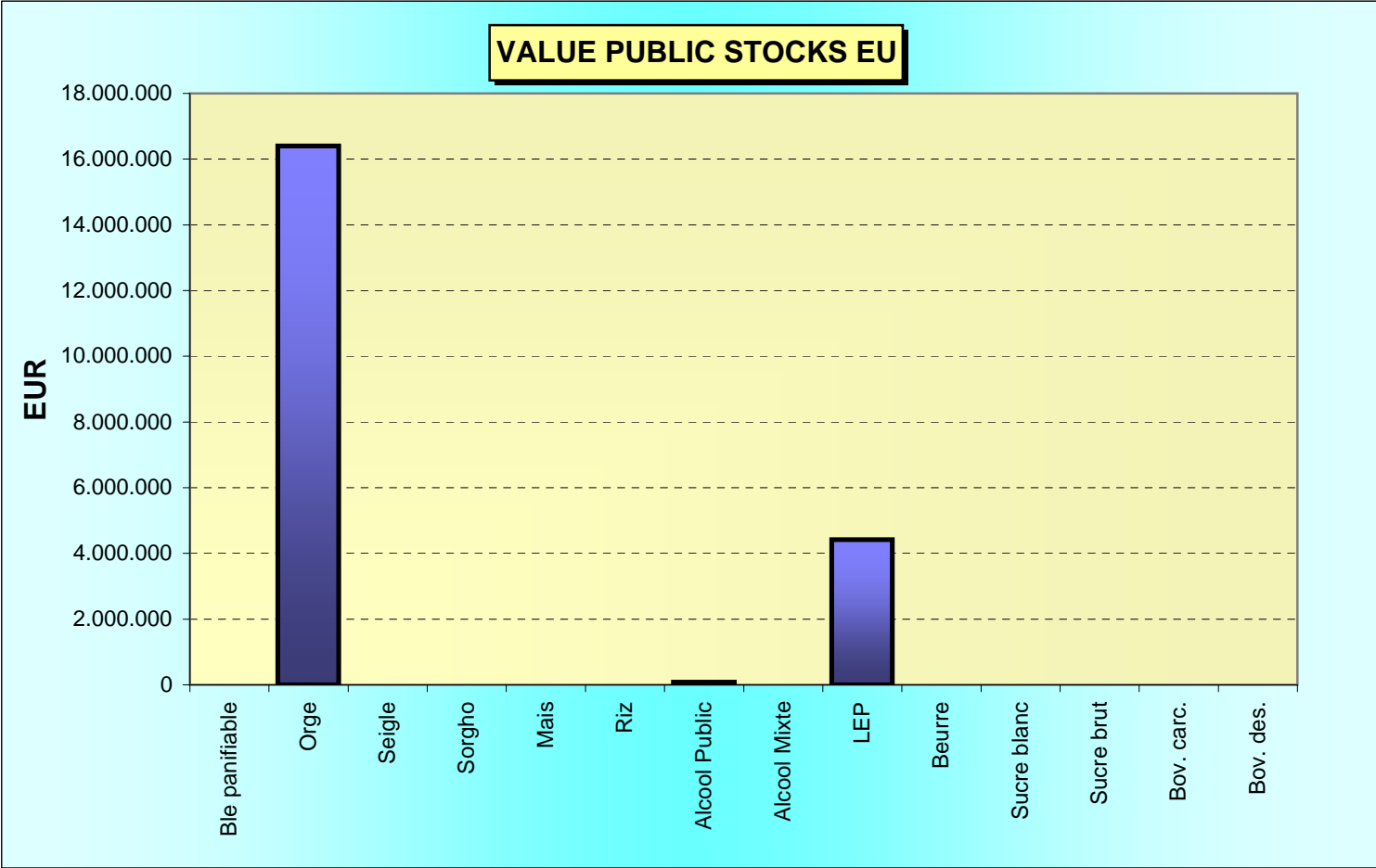
31-mar-12

AGRI I.4

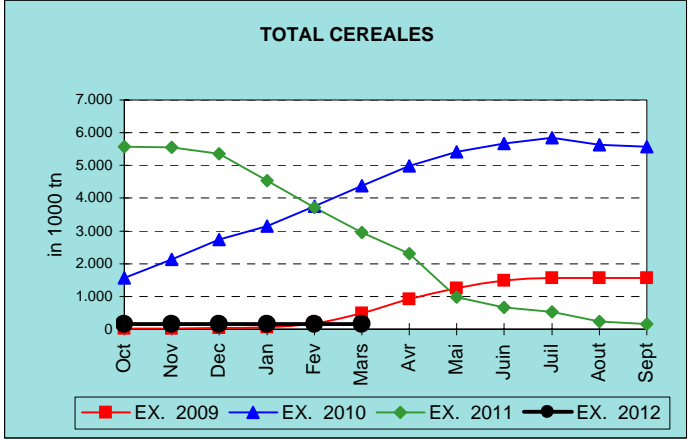
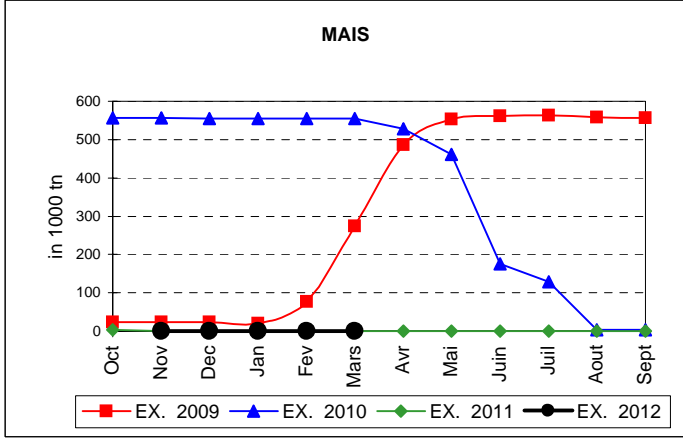
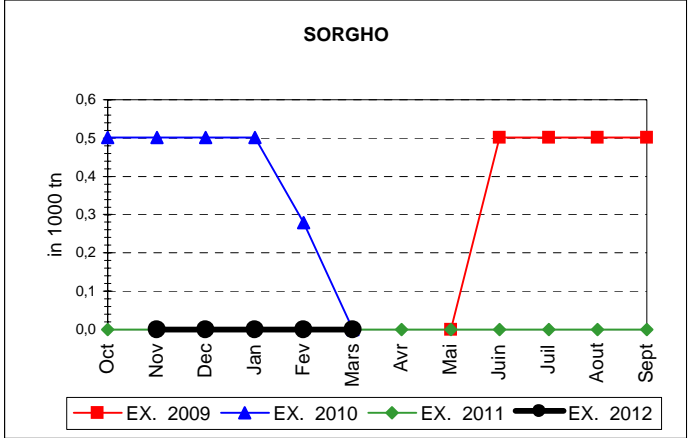
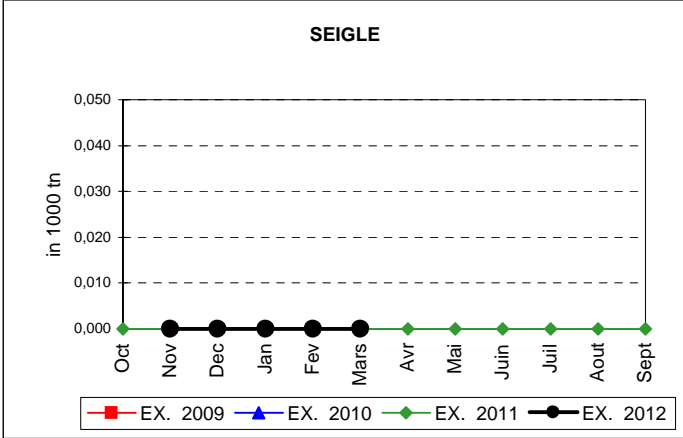
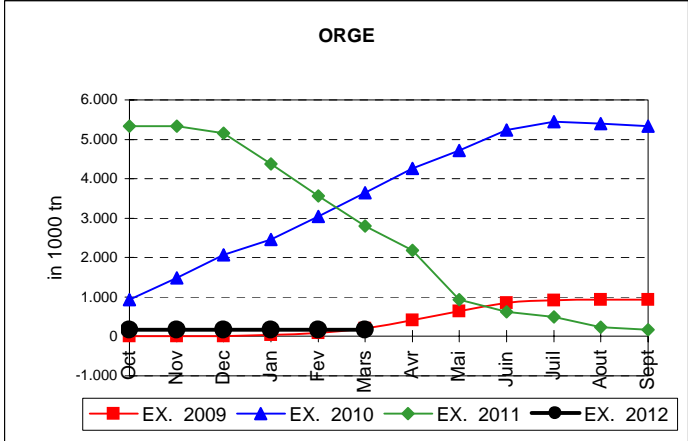
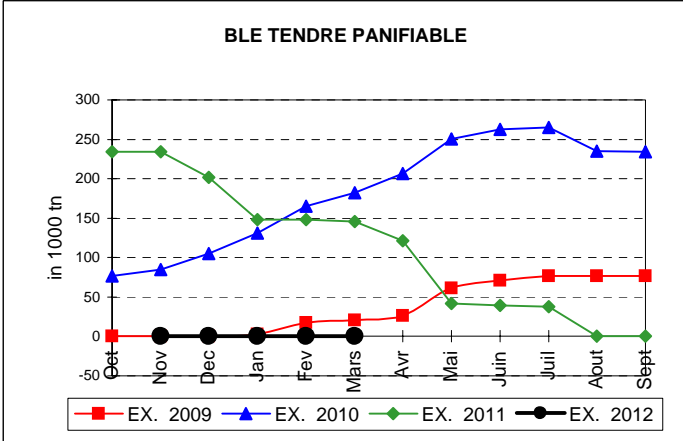
G. MERTENS tel. 65910

Produits		BE	BG	CZ	DK	DE	EE	IE	EL	ES	FR	IT	CY	LV	LT	LU	HU	MT	NL	OS	PL	PO	RO	SI	SK	FIN	SE	UK	TOTAL	
BLE PANIF	quant.																													
	valeur																													
ORGE	quant.					16.856					396															75.317	64.374	5.161	162.104	
	valeur					1.694.032					40.123																7.630.339	6.521.713	511.191	16.397.398
SEIGLE	quant.																													
SEIGLE	valeur																													
SORGHO	quant.																													
SORGHO	valeur																													
MAIS	quant.																													
MAIS	valeur																													
TOT.CER	quant.					16.856					396															75.317	64.374	5.161	162.104	
TOT.CER	valeur																													
RIZ	quant.																													
RIZ	valeur																													
ALC.P.	quant.												2.791																2.791	
ALC.P.	valeur												78.263																78.263	
ALC.M.	quant.																													
ALC.M.	valeur																													
TOT.ALC.	quant.												2.791																2.791	
TOT.ALC.	valeur																													
LEP	quant.					805	635												288			0						1.265	2.993	
LEP	valeur					1.197.422	908.769												430.169			674						1.884.656	4.421.689	
BEURRE	quant.						1									1													1	
BEURRE	valeur						1.124								1.798														2.922	
TOT L&B	quant.					805	636									1			288			0						1.265	2.994	
TOT L&B	valeur																													
S. BLANC	quant.																													
S. BLANC	valeur																													
S. BRUT	quant.																													
S. BRUT	valeur																													
TOT. SUC	quant.																													
TOT. SUC	valeur																													
BOV.QUA	quant.																													
BOV.QUA	valeur																													
BOV.DES	quant.																													
BOV.DES	valeur																													
EQ. CARC	quant.																													
TOT EQ	quant.																													
TOT EQ	valeur																													
EU TOTAL	valeur					2.891.454	909.893				40.123		78.263		1.798				430.169			674					7.630.339	6.521.713	2.395.847	20.900.273

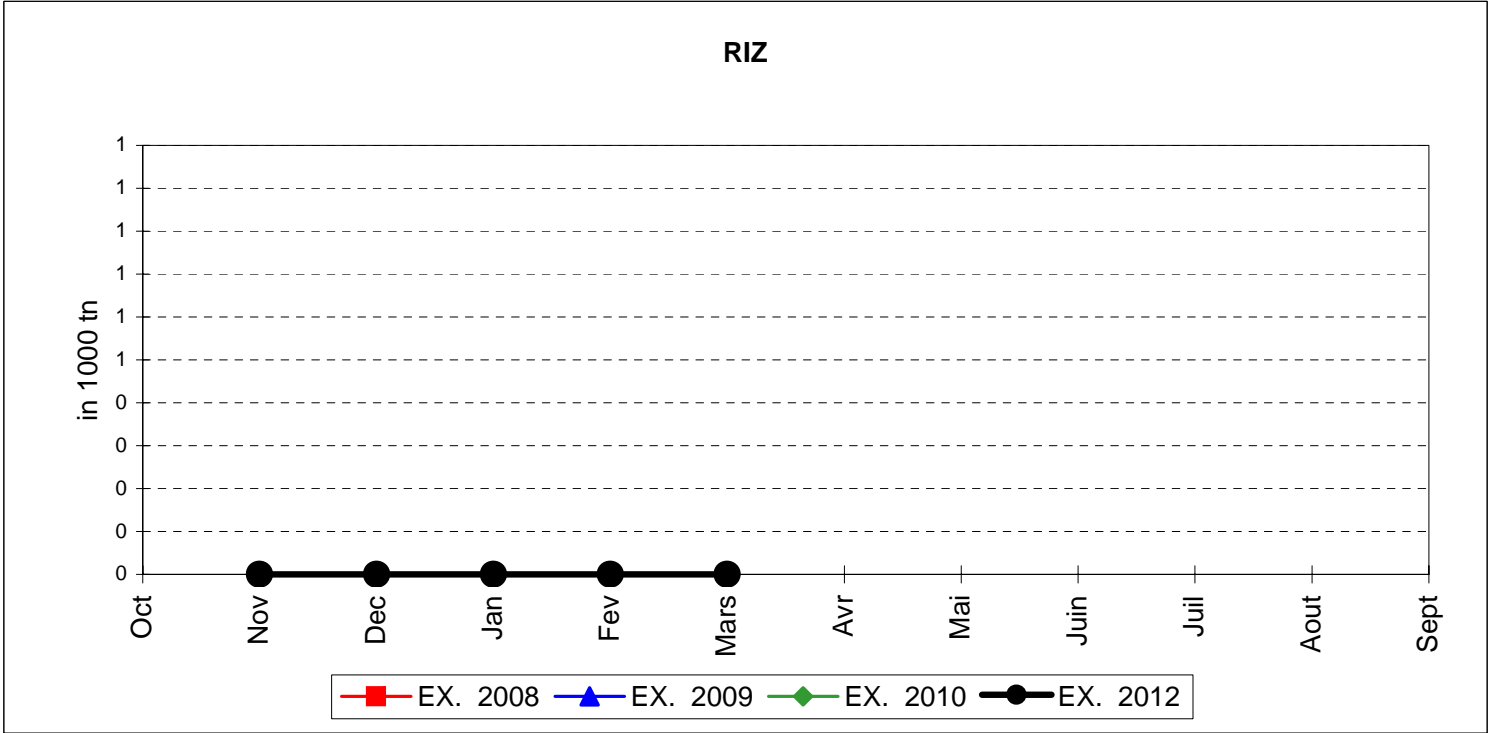
**PUBLIC INTERVENTION STOCKS**



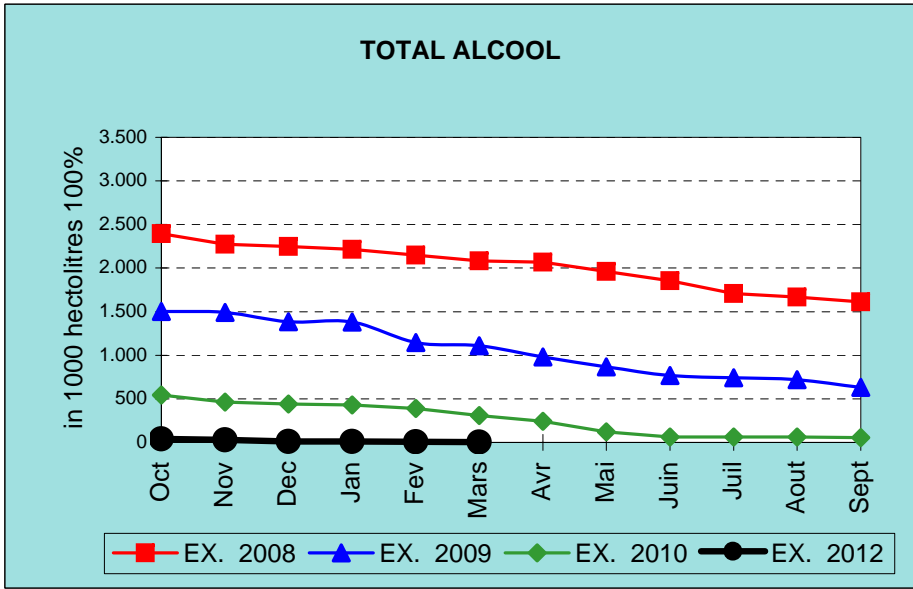
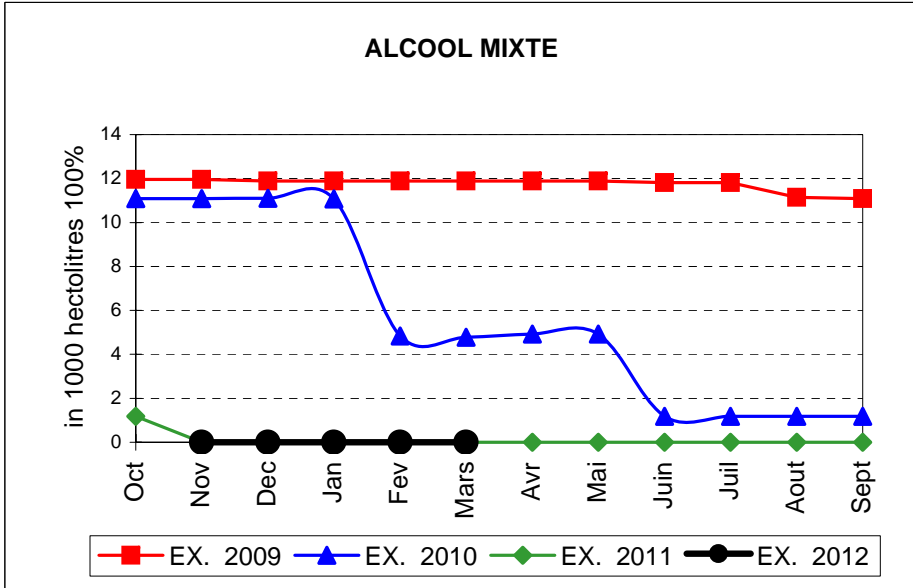
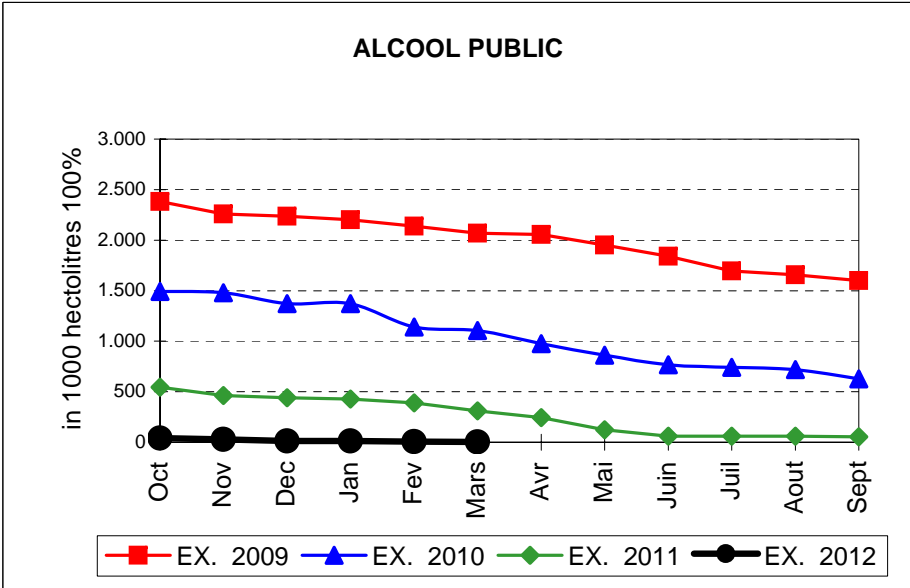
# EVOLUTION IN QUANTITIES OF PUBLIC INTERVENTION STOCKS



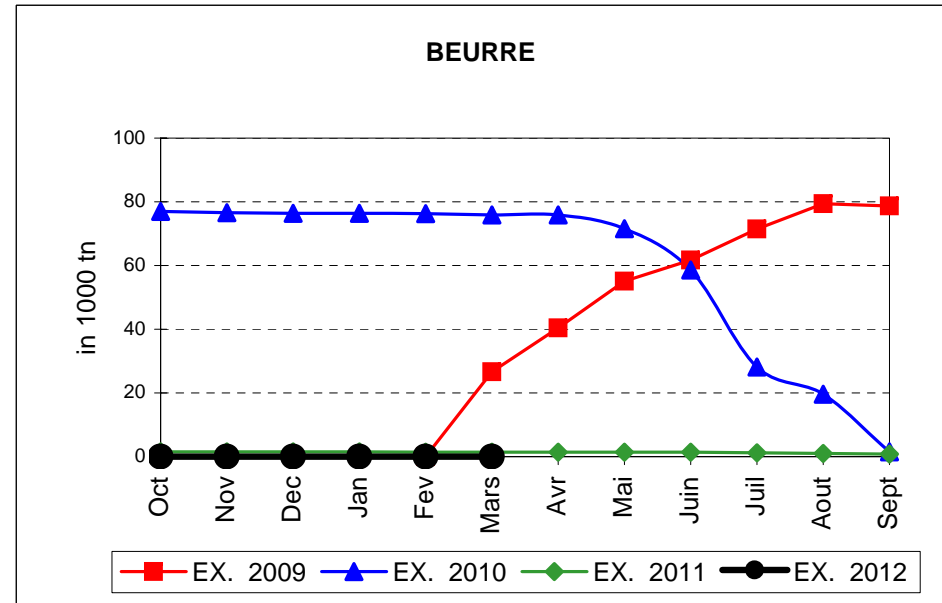
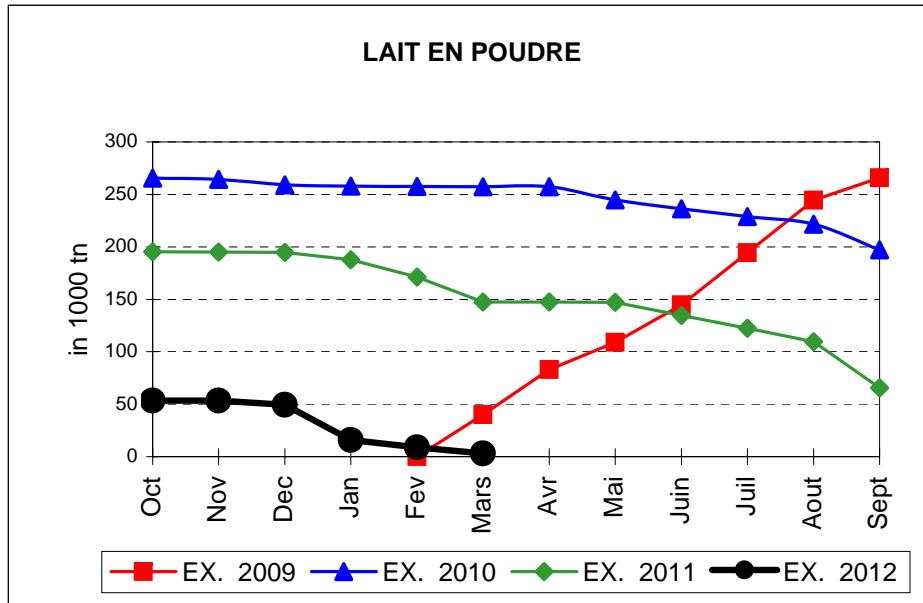
# EVOLUTION IN QUANTITIES OF PUBLIC INTERVENTION STOCKS



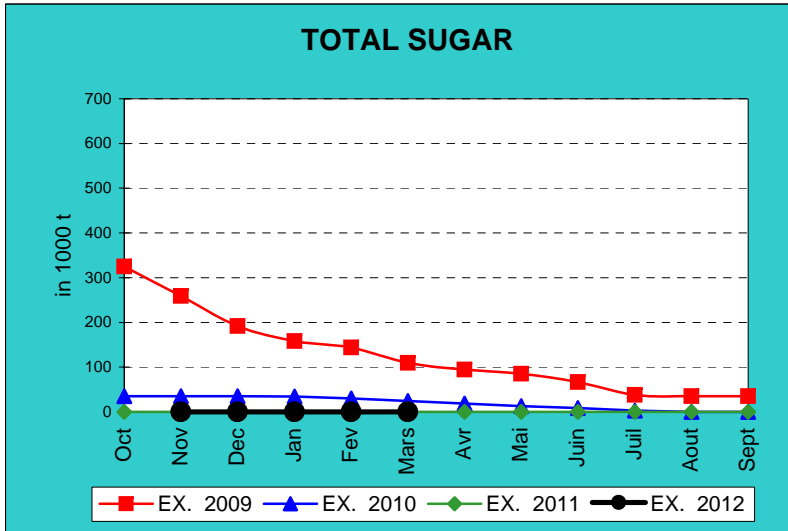
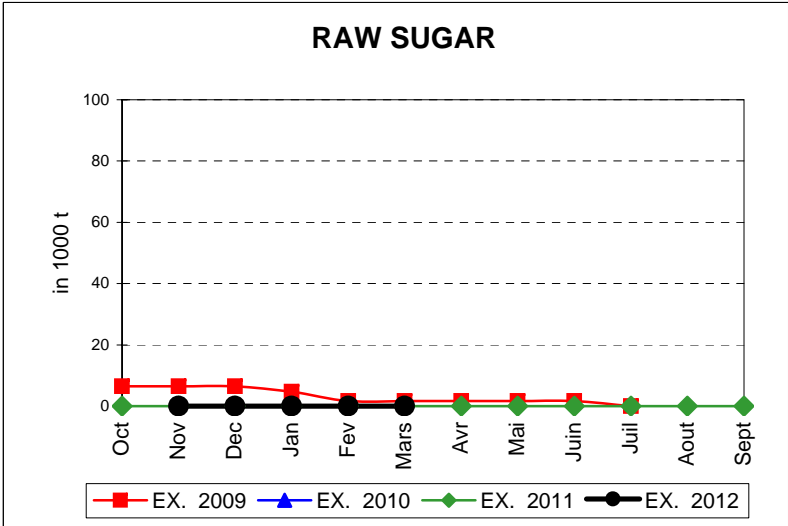
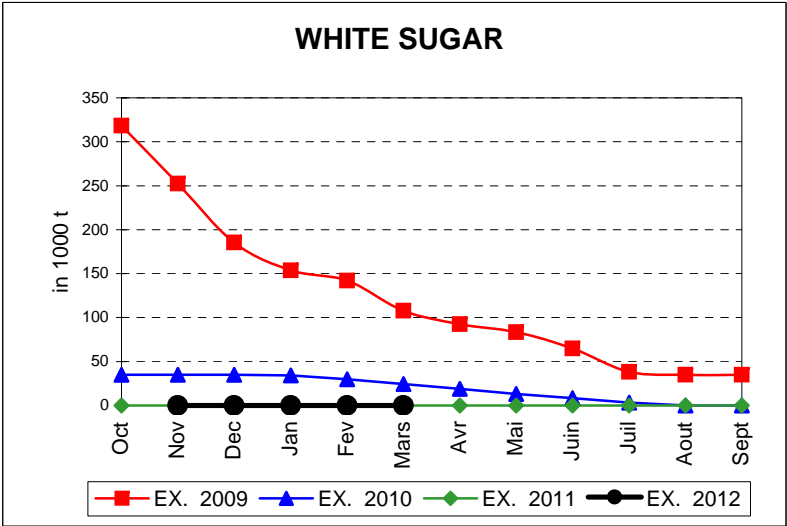
# EVOLUTION IN QUANTITIES OF PUBLIC INTERVENTION STOCKS



## EVOLUTION IN QUANTITIES OF PUBLIC INTERVENTION STOCKS



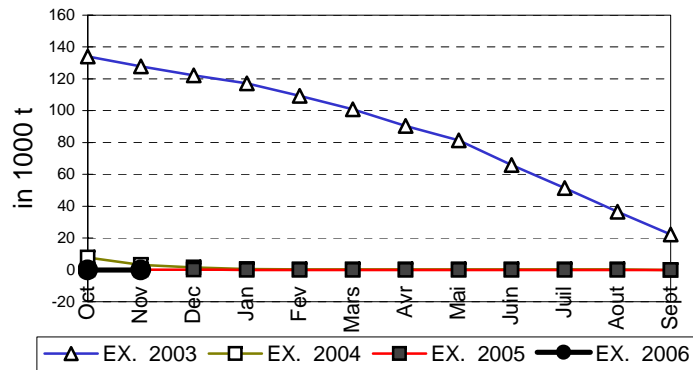
# EVOLUTION IN QUANTITIES OF PUBLIC INTERVENTION STOCKS



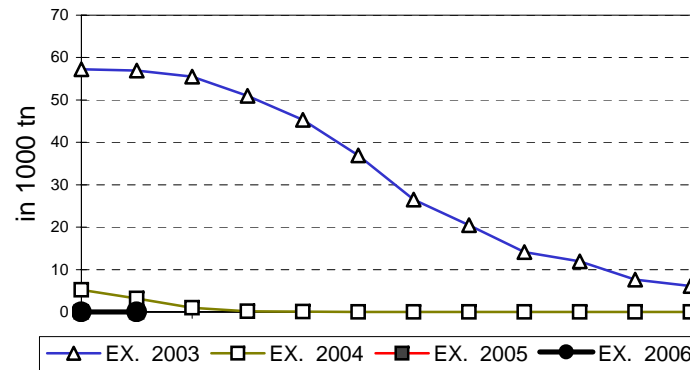


## EVOLUTION IN QUANTITIES OF PUBLIC INTERVENTION STOCKS

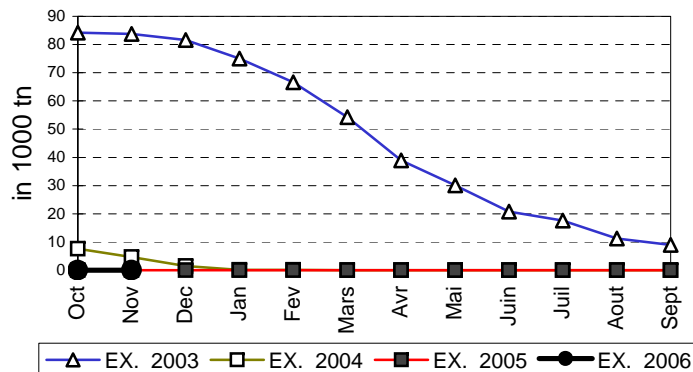
### VIANDE BOVINE CARCASSES



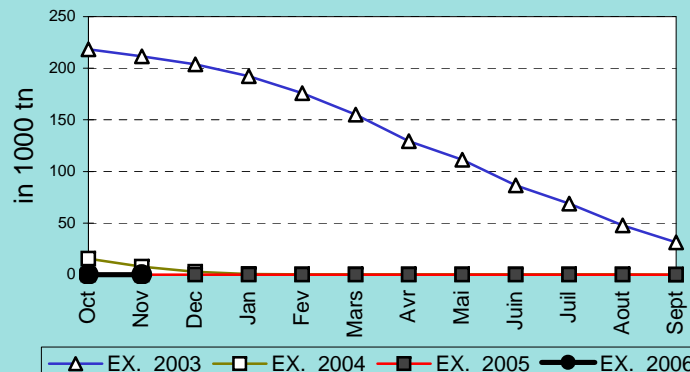
### VIANDE BOVINE DESOSSEE



### VIANDE DESOSSEE EN EQUIVALENT CARCASSES



### TOTAL VIANDE EN EQUIVALENT CARCASSES



## COMPARED WITH PREVIOUS MONTH

EU TOTAL	31-mar-12		29-feb-12		CHANGE IN QTY		CHANGE IN VALUE	
	QUANTITY (tn or hl)	VALUE (in Euro)	QUANTITY (tn or hl)	VALUE (in Euro)	ABSOLUTE (tn or hl)	%	ABSOLUTE (in Euro)	%
CLICK TOTALS FOR GRAPHICS	(a)	(b)	(c)	(d)	(e)=(a)-(c)	(f)=(e)/(c)*%	(g)=(b)-(d)	(h)=(g)/(d)*%
<b>Blé panifiable</b>								
<b>Orge</b>	162.104	16.397.398	162.137	16.400.738	-33	0%	-3.340	0%
<b>Seigle</b>								
<b>Sorgho</b>								
<b>Mais</b>								
<b>TOTAL CEREALES</b>	<b>162.104</b>	<b>16.397.398</b>	<b>162.137</b>	<b>16.400.738</b>	<b>-33</b>	<b>0%</b>	<b>-3.340</b>	<b>0%</b>
<b>TOTAL RIZ</b>								
<b>Alcool Public</b>	2.791	78.263	7.296	204.622	-4.505	-62%	-126.359	-62%
<b>Alcool Mixte</b>								
<b>TOTAL ALCOOL (HL 100%)</b>	<b>2.791</b>	<b>78.263</b>	<b>7.296</b>	<b>204.622</b>	<b>-4.505</b>	<b>-62%</b>	<b>-126.359</b>	<b>-62%</b>
<b>LEP</b>	2.993	4.421.689	8.945	13.314.540	-5.952	-67%	-8.892.851	-67%
<b>Beurre</b>	1	2.922	1	2.922				
<b>TOTAL LAIT ET BEURRE</b>	<b>2.994</b>	<b>4.424.611</b>	<b>8.947</b>	<b>13.317.463</b>	<b>-5.952</b>	<b>-67%</b>	<b>-8.892.851</b>	<b>-67%</b>
<b>Sucre blanc</b>								
<b>Sucre brut</b>								
<b>TOTAL SUCRE</b>								
<b>Bov. carc.</b>								
<b>Bov. des.</b>								
<b>Eq. carc.</b>								
<b>TOTAL EQ. CARCASSES</b>								
<b>GRAND TOTAL</b>		<b>20.900.273</b>		<b>29.922.823</b>			<b>-9.022.551</b>	<b>-30%</b>

SOURCE : The declarations of the Member States before controls.

## COMPARED WITH PREVIOUS YEAR

EU TOTAL	31-mar-12		31-mar-11		CHANGE IN QTY		CHANGE IN VALUE	
	QUANTITY (tn or hl)	VALUE (in Euro)	QUANTITY (tn or hl)	VALUE (In Euro)	ABSOLUTE (tn or hl)	%	ABSOLUTE (in Euro)	%
CLICK TOTALS FOR GRAPHICS	(a)	(b)	(c)	(d)	(e)=(a)-(c)	(f)=(e)/(c)*%	(g)=(b)-(d)	(h)=(g)/(d)*%
<b>Blé panifiable</b>			145.514	14.739.039	-145.514	-100%	-14.739.039	-100%
<b>Orge</b>	162.104	16.397.398	2.798.335	284.207.428	-2.636.231	-94%	-267.810.030	-94%
<b>Seigle</b>								
<b>Sorgho</b>								
<b>Mais</b>								
<b>TOTAL CEREALES</b>	<b>162.104</b>	<b>16.397.398</b>	<b>2.943.849</b>	<b>298.946.467</b>	<b>-2.781.745</b>	<b>-94%</b>	<b>-282.549.069</b>	<b>-95%</b>
<b>TOTAL RIZ</b>								
<b>Alcool Public</b>	2.791	78.263	310.188	10.546.737	-307.397	-99%	-10.468.474	-99%
<b>Alcool Mixte</b>								
<b>TOTAL ALCOOL (HL 100%)</b>	<b>2.791</b>	<b>78.263</b>	<b>310.188</b>	<b>10.546.737</b>	<b>-307.397</b>	<b>-99%</b>	<b>-10.468.474</b>	<b>-99%</b>
<b>LEP</b>	2.993	4.421.689	147.390	219.742.398	-144.397	-98%	-215.320.709	-98%
<b>Beurre</b>	1	2.922	1.435	3.103.957	-1.434	-100%	-3.101.035	-100%
<b>TOTAL LAIT ET BEURRE</b>	<b>2.994</b>	<b>4.424.611</b>	<b>148.825</b>	<b>222.846.356</b>	<b>-145.831</b>	<b>-98%</b>	<b>-218.421.744</b>	<b>-98%</b>
<b>Sucre blanc</b>								
<b>Sucre brut</b>								
<b>TOTAL SUCRE</b>								
<b>Bov. carc.</b>								
<b>Bov. des.</b>								
<b>Eq. carc.</b>								
<b>TOTAL EQ. CARCASSES</b>								
<b>GRAND TOTAL</b>		<b>20.900.273</b>		<b>532.339.559</b>			<b>-511.439.287</b>	<b>-96%</b>

SOURCE :

The declarations of the Member States before controls.

THE PUBLIC STORAGE FLASH REPORT AS AT						31-mar-12			
ESPAÑA									
PRODUCTS	YEAR-TO-DATE		OPENING BALANCE		CHANGE IN QTY		CHANGE IN VALUE		
	QUANTITY (in tonnes or hl)	VALUE (in Euro)	QUANTITY (in tonnes or hl)	VALUE (in Euro)	ABSOLUTE (in tonnes or hl)	%	ABSOLUTE (in Euro)	%	
	(a)	(b)	(c)	(d)	(e)=(a)-(c)	(f)=(e)/(c)*%	(g)=(b)-(d)	(h)=(g)/(d)*%	
Ble panifiable									
Orge									
Seigle									
Sorgho									
Mais									
<b>TOTAL CEREALES</b>									
<b>RIZ</b>									
Alcool Public									
Alcool Mixte									
<b>TOT. ALCOOL (HL)</b>									
LEP									
Beurre									
<b>TOTAL L &amp; B</b>									
Sucre Blanc									
Sucre Brut									
<b>TOTAL SUCRE</b>									
Bov. carc.									
Bov. des.									
Eq. carc.									
<b>TOTAL EQ. CARC.</b>									
<b>GRAND TOTAL</b>									

