

CHOOSE COUNTRY

EU TOTAL	YEAR-TO-DATE		OPENING BALANCE (1)		CHANGE IN QTY		CHANGE IN VALUE	
	QUANTITY (tn or hl)	VALUE (in Euro)	QUANTITY (tn or hl)	VALUE (In Euro)	ABSOLUTE (tn or hl)	%	ABSOLUTE (in Euro)	%
CLICK TOTALS FOR GRAPHICS	(a)	(b)	(c)	(d)	(e)=(a)-(c)	(f)=(e)/(c)*%	(g)=(b)-(d)	(h)=(g)/(d)*%
Blé panifiable	206.934	21.328.111	76.703	7.911.093	130.231	170%	13.417.018	170%
Orge	4.258.587	431.496.587	925.385	94.445.665	3.333.202	360%	337.050.922	357%
Seigle								
Sorgho			502	50.812	-502	-100%	-50.812	-100%
Mais	527.719	53.631.245	556.111	56.510.040	-28.392	-5%	-2.878.795	-5%
TOTAL CEREALES	4.993.240	506.455.943	1.558.701	158.917.609	3.434.539	220%	347.538.334	219%
TOTAL RIZ								
Alcool Public	976.943	36.253.210	1.600.049	59.312.261	-623.106	-39%	-23.059.051	-39%
Alcool Mixte	4.928	70.593	11.067	180.503	-6.138	-55%	-109.911	-61%
TOTAL ALCOOL (HL 100%)	981.872	36.323.802	1.611.116	59.492.764	-629.244	-39%	-23.168.962	-39%
LEP	257.261	383.850.497	268.527	400.661.815	-11.266	-4%	-16.811.318	-4%
Beurre	75.872	165.260.250	78.688	171.396.018	-2.816	-4%	-6.135.768	-4%
TOTAL LAIT ET BEURRE	333.133	549.110.747	347.215	572.057.832	-14.082	-4%	-22.947.086	-4%
Sucre Blanc	18.961	6.101.911	34.080	10.975.054	-15.119	-44%	-4.873.143	-44%
Sucre Brut								
TOTAL SUCRE	18.961	6.101.911	34.080	10.975.054	-15.119	-44%	-4.873.143	-44%
Bov. carc.								
Bov. des.								
Eq. carc.								
TOTAL EQ. CARCASSES								
GRAND TOTAL		1.097.992.403		801.443.260			296.549.143	37%

SOURCE : The declarations of the Member States before controls.

(1) Period 13/2009 annual declaration

quantities are expressed in
tonnes (alcohol in hl 100%)

ACCOUNTING VALUE OF THE PUBLIC INTERVENTION STOCKS AS AT :
(BEFORE THE COMPLEMENTARY DEPRECIATION)

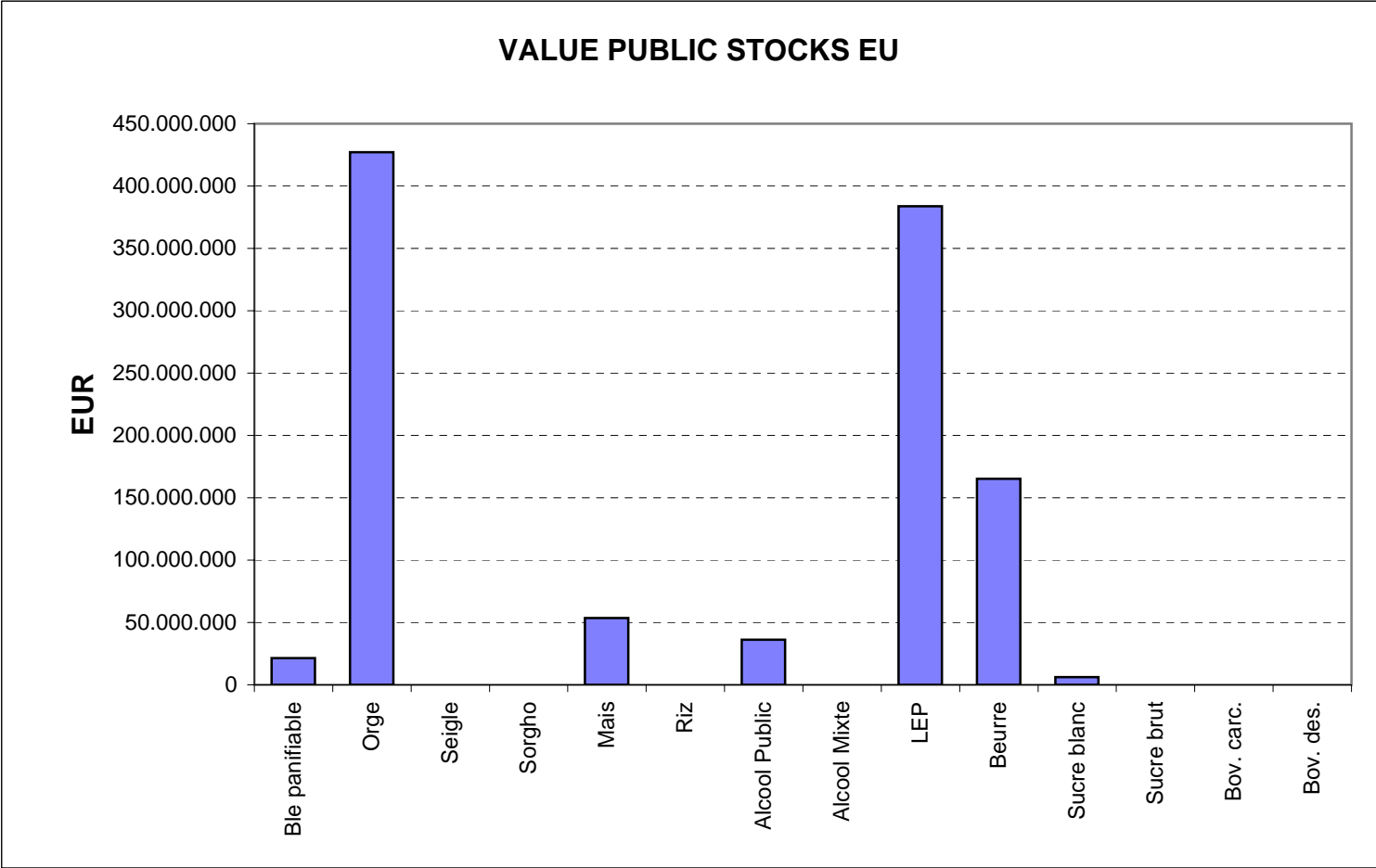
30-abr-10

AGRI I.4

J. FLORET tel. 53236

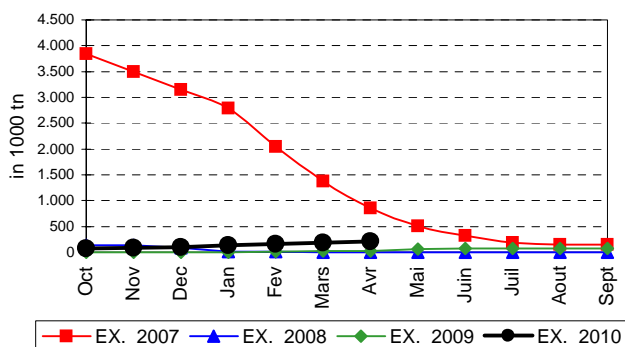
Produits		BE	BG	CZ	DK	DE	EE	IE	EL	ES	FR	IT	CY	LV	LT	LU	HU	MT	NL	OS	PL	PO	RO	SI	SK	FIN	SE	UK	TOTAL	
BLE PANIF	quant.		6.599	89.258											91		71.951				621				33.185	5.228			206.934	
	valeur		667.586	9.369.458											8.867		7.324.640					62.820				3.361.966	532.772			21.328.111
ORGE	quant.	33.632	31.832	365.407	12.949	1.442.441	68.124				555.145			22.910	126.503		296.352			32.839	309.538		43.351		142.880	553.420	132.056	89.209	4.258.587	
	valeur	3.403.509	3.271.686	38.601.646	1.299.064	144.561.396	7.063.094				56.319.415			2.308.201	12.719.866		30.118.245			3.327.290	31.012.577		4.420.043		14.539.445	56.277.315	13.391.796	8.862.000	431.496.587	
SEIGLE	quant.																													
SORGHO	quant.																													
MAIS	quant.																418.687								109.031				527.719	
	valeur																42.413.029								11.218.216				53.631.245	
TOT.CER	quant.	33.632	38.431	454.866	12.949	1.442.441	68.124				555.145			22.910	126.594		786.991			32.839	310.159		43.351		285.096	558.649	132.056	89.209	4.993.240	
RIZ	quant.																													
ALC.P.	quant.								60.269	507.820	136.084	138.425	7.219				54.996					72.130							976.943	
	valeur								2.229.366	18.901.071	5.036.463	5.117.568	266.516				2.034.843					2.667.383							36.253.210	
ALC.M.	quant.										1.173	3.756																	4.928	
	valeur										4.644	65.949																	70.593	
TOT.ALC.	quant.								60.269	507.820	137.257	142.181	7.219				54.996					72.130							981.872	
LEP	quant.	24.122		3.766		63.775	2.634	32.175		1.382	54.404				10.344				19.860		20.549	2.433				1.552	3.614	16.651	257.261	
	valeur	35.721.397		5.932.845		94.890.079	3.768.210	48.065.687		2.105.975	81.513.062				15.503.069				29.689.284		30.469.181	3.642.096				2.324.663	5.412.002	24.812.948	383.850.497	
BEURRE	quant.	3.232		527		9.894	1.153	13.922		9.335	13.081				1.693					11.541	1.901	5.079						4.515	75.872	
	valeur	7.045.295		1.200.445		21.567.767	2.355.675	30.348.859		20.336.764	28.499.630				3.689.732					25.158.335	4.146.093	11.071.712						9.839.943	165.260.250	
TOT L&B	quant.	27.354		4.293		73.668	3.787	46.097		10.717	67.485				12.036					31.401	22.449	7.512				1.552	3.614	21.166	333.133	
S. BLANC	quant.			9				995				17.957																	18.961	
	valeur			3.052				289.475				5.809.384																	6.101.911	
S. BRUT	quant.																													
	valeur																													
TOT. SUC	quant.			9				995				17.957																	18.961	
BOV.QUA	quant.																													
	valeur																													
BOV.DES	quant.																													
	valeur																													
EQ. CARC	quant.																													
TOT EQ	quant.																													
EU TOTAL	valeur	46.170.202	3.939.272	55.107.445	1.299.064	261.019.242	13.186.980	78.704.021	2.229.366	41.343.810	171.373.214	10.992.900	266.516	2.308.201	31.921.534	81.890.757		54.847.619	3.327.290	65.690.672	17.381.191	4.420.043		29.119.627	59.134.750	18.803.798	43.514.891	1.097.992.403		

PUBLIC INTERVENTION STOCKS

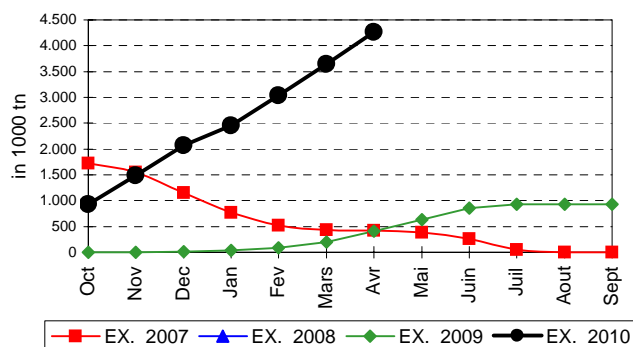


EVOLUTION IN QUANTITIES OF PUBLIC INTERVENTION STOCKS

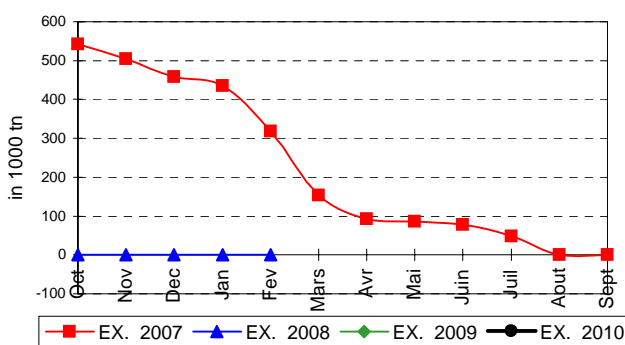
BLE TENDRE PANIFIABLE



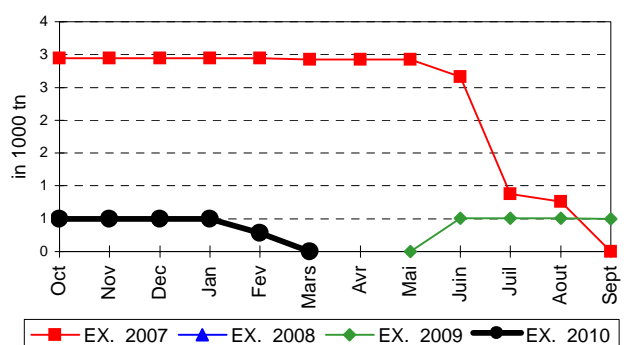
ORGE



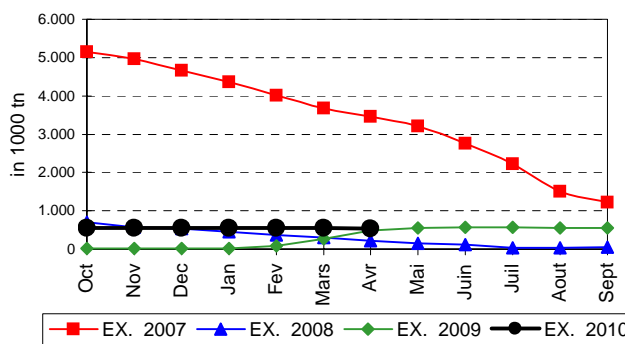
SEIGLE



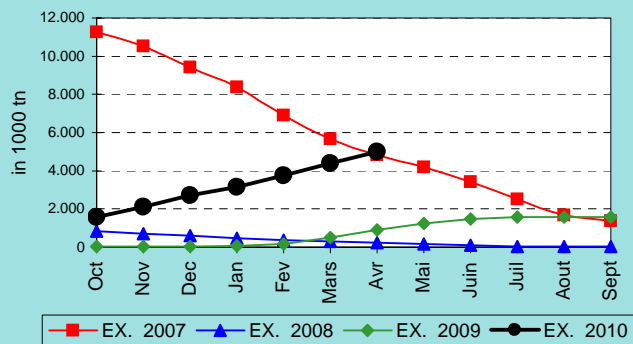
SORGHO



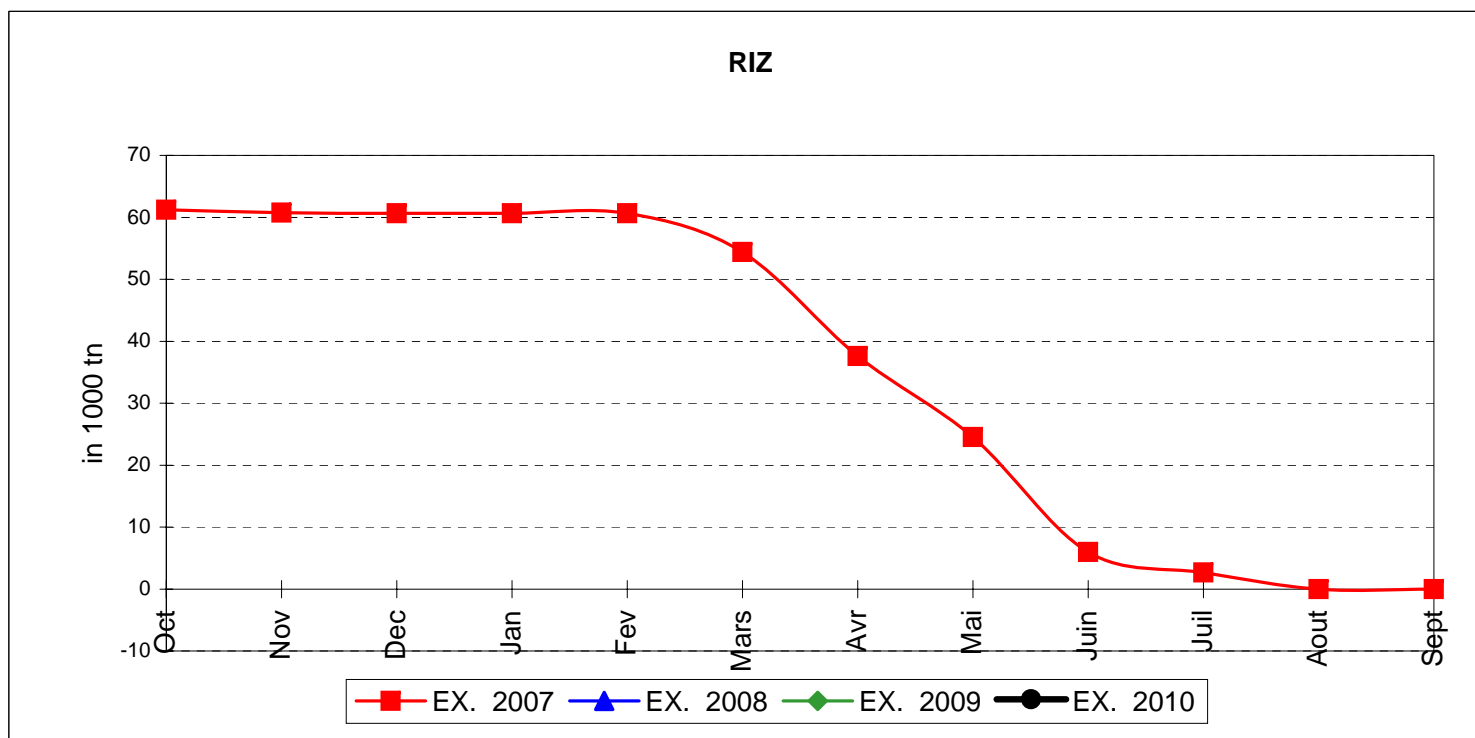
MAIS



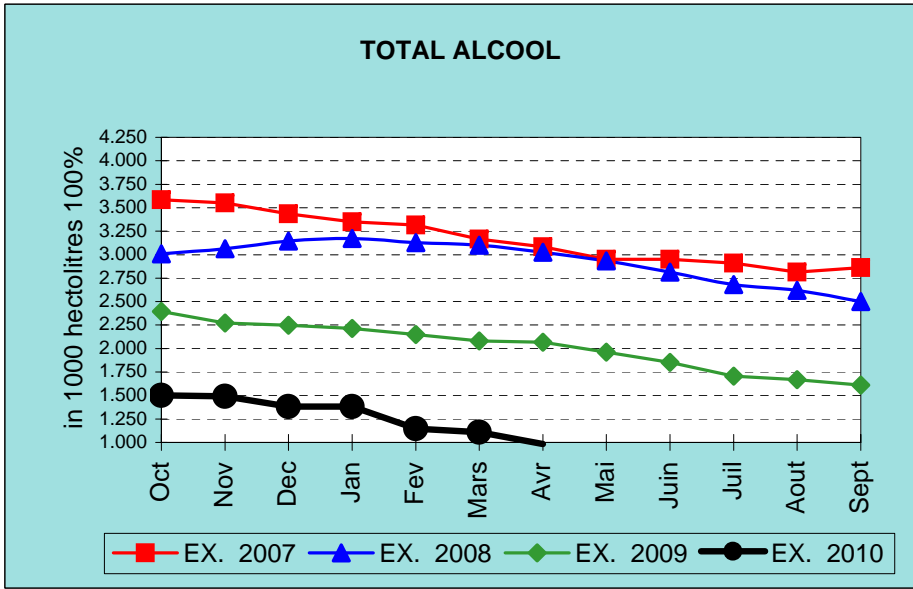
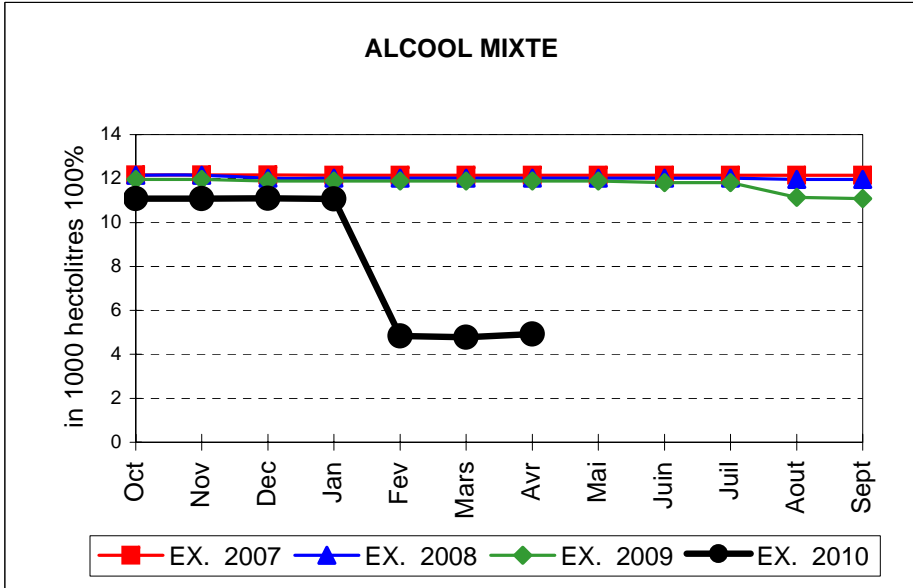
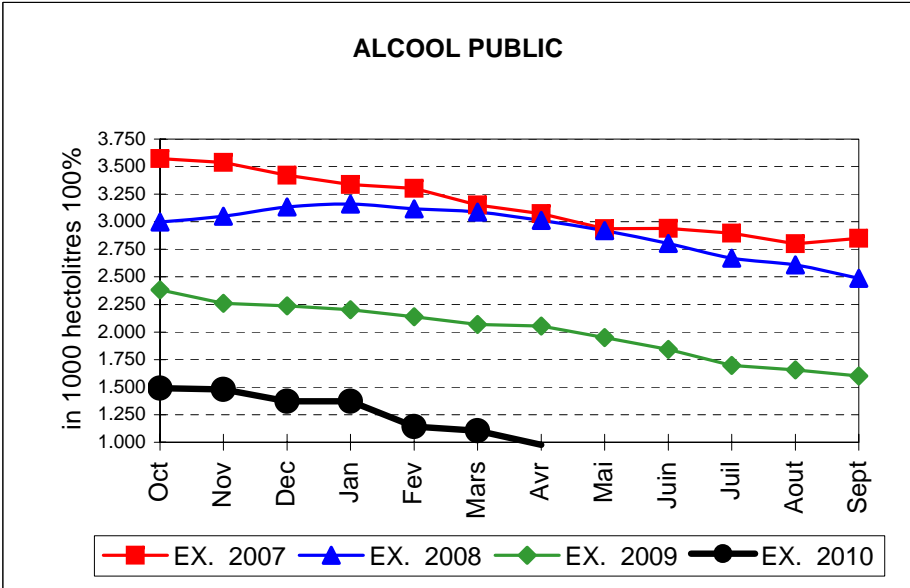
TOTAL CEREALES



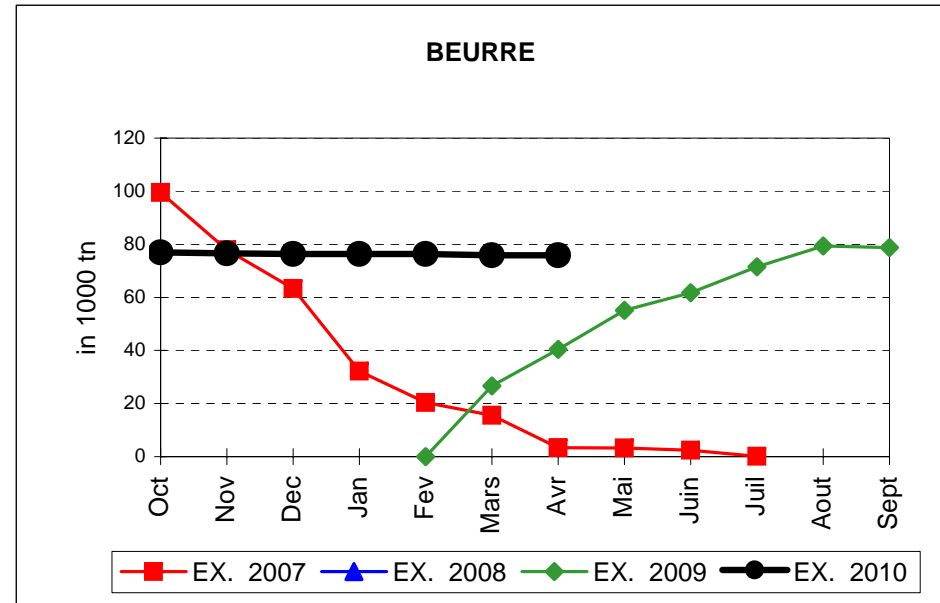
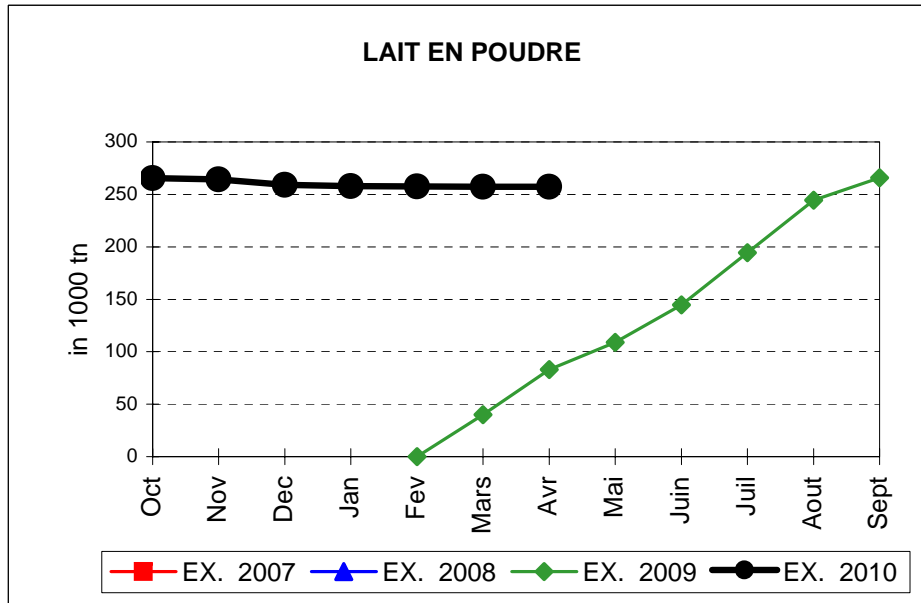
EVOLUTION IN QUANTITIES OF PUBLIC INTERVENTION STOCKS



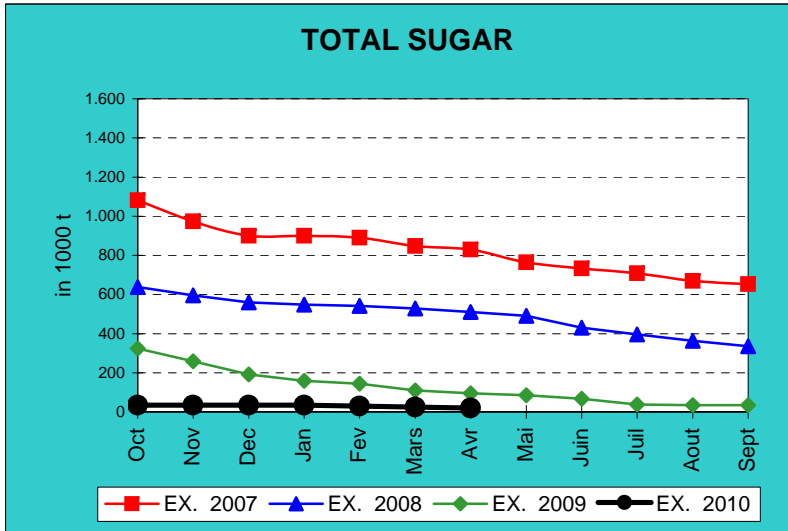
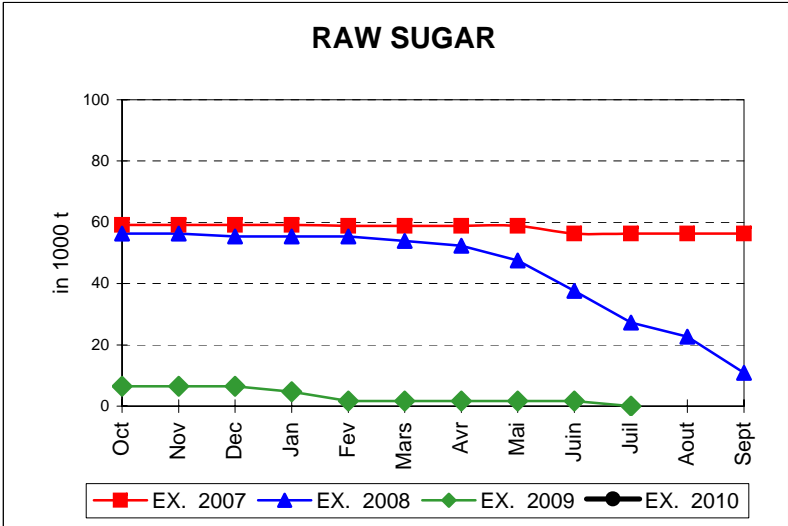
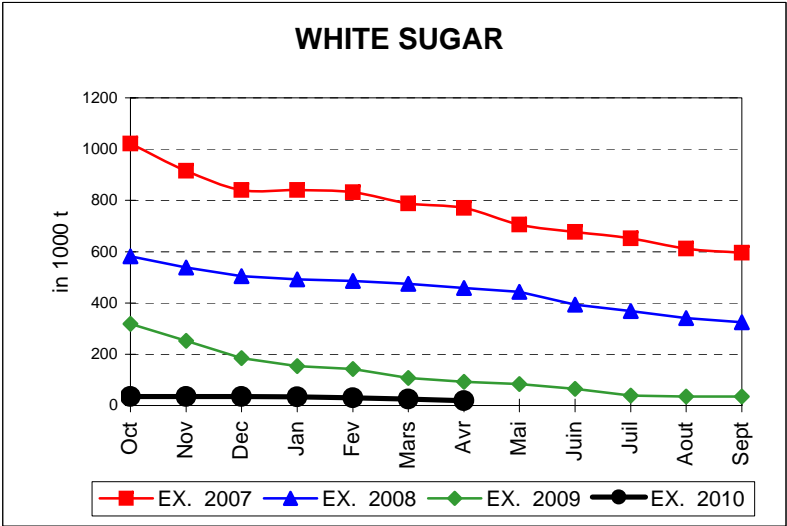
EVOLUTION IN QUANTITIES OF PUBLIC INTERVENTION STOCKS



EVOLUTION IN QUANTITIES OF PUBLIC INTERVENTION STOCKS

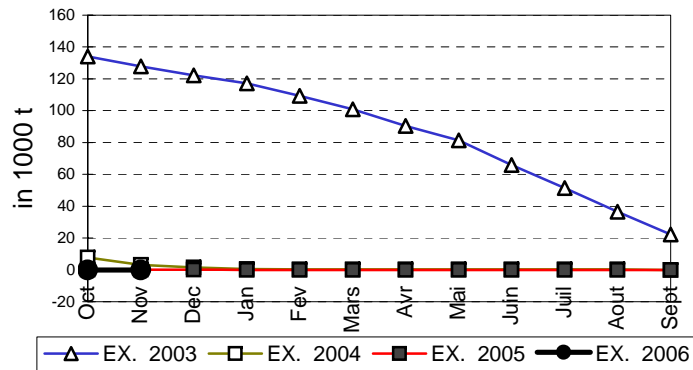


EVOLUTION IN QUANTITIES OF PUBLIC INTERVENTION STOCKS

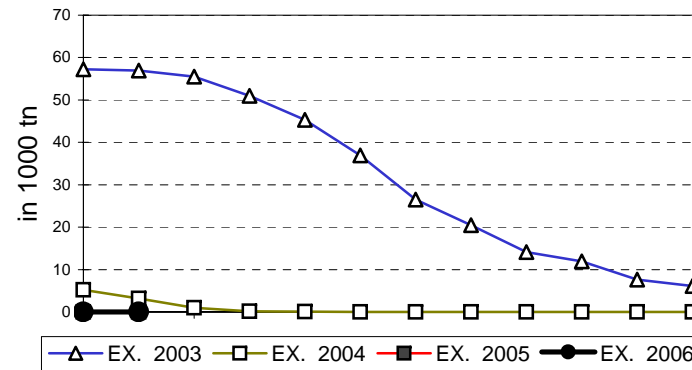


EVOLUTION IN QUANTITIES OF PUBLIC INTERVENTION STOCKS

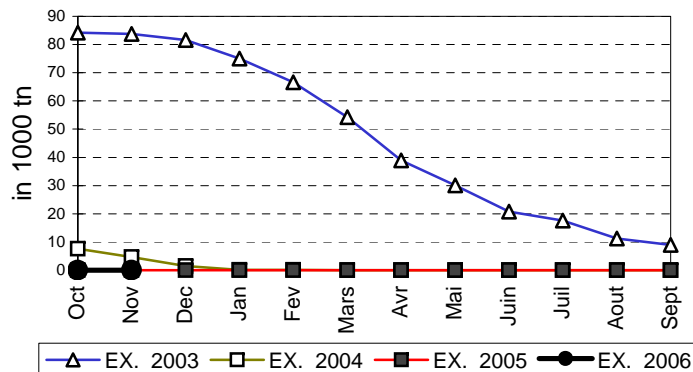
VIANDE BOVINE CARCASSES



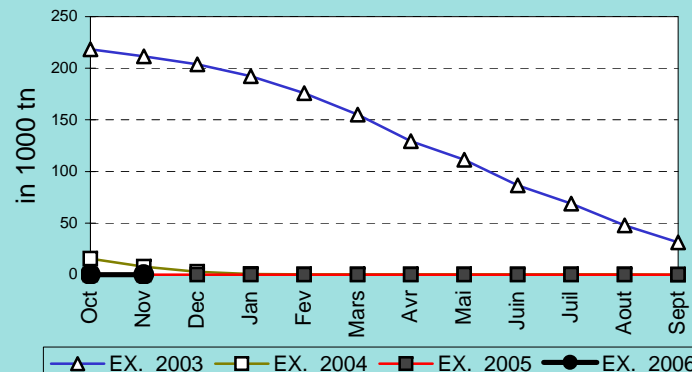
VIANDE BOVINE DESOSSEE



VIANDE DESOSSEE EN EQUIVALENT CARCASSES



TOTAL VIANDE EN EQUIVALENT CARCASSES



COMPARED WITH PREVIOUS MONTH

EU TOTAL	30-abr-10		31-mar-10		CHANGE IN QTY		CHANGE IN VALUE	
	QUANTITY (tn or hl)	VALUE (in Euro)	QUANTITY (tn or hl)	VALUE (In Euro)	ABSOLUTE (tn or hl)	%	ABSOLUTE (in Euro)	%
CLICK TOTALS FOR GRAPHICS	(a)	(b)	(c)	(d)	(e)=(a)-(c)	(f)=(e)/(c)*%	(g)=(b)-(d)	(h)=(g)/(d)*%
Blé panifiable	206.934	21.328.111	182.189	18.781.069	24.745	14%	2.547.042	14%
Orge	4.258.587	431.496.587	3.647.499	368.864.395	611.088	17%	62.632.192	17%
Seigle								
Sorgho								
Mais	527.719	53.631.245	554.144	56.310.301	-26.425	-5%	-2.679.056	-5%
TOTAL CEREALES	4.993.240	506.455.943	4.383.832	443.955.765	609.408	14%	62.500.178	14%
TOTAL RIZ								
Alcool Public	976.943	36.253.210	1.104.823	40.991.252	-127.879	-12%	-4.738.042	-12%
Alcool Mixte	4.928	70.593	4.779	70.003	149	3%	590	1%
TOTAL ALCOOL (HL 100%)	981.872	36.323.802	1.109.602	41.061.255	-127.730	-12%	-4.737.452	-12%
LEP	257.261	383.850.497	257.423	384.093.592	-162	0%	-243.095	0%
Beurre	75.872	165.260.250	75.893	165.306.621	-21	0%	-46.372	0%
TOTAL LAIT ET BEURRE	333.133	549.110.747	333.317	549.400.214	-184	0%	-289.467	0%
Sucre blanc	18.961	6.101.911	24.457	7.887.299	-5.496	-22%	-1.785.388	-23%
Sucre brut								
TOTAL SUCRE	18.961	6.101.911	24.457	7.887.299	-5.496	-22%	-1.785.388	-23%
Bov. carc.								
Bov. des.								
Eq. carc.								
TOTAL EQ. CARCASSES								
GRAND TOTAL		1.097.992.403		1.042.304.533			55.687.870	5%

SOURCE : The declarations of the Member States before controls.

COMPARED WITH PREVIOUS YEAR

EU TOTAL	30-abr-10		30-abr-09		CHANGE IN QTY		CHANGE IN VALUE	
	QUANTITY (tn or hl)	VALUE (in Euro)	QUANTITY (tn or hl)	VALUE (In Euro)	ABSOLUTE (tn or hl)	%	ABSOLUTE (in Euro)	%
CLICK TOTALS FOR GRAPHICS	(a)	(b)	(c)	(d)	(e)=(a)-(c)	(f)=(e)/(c)*%	(g)=(b)-(d)	(h)=(g)/(d)*%
Blé panifiable	206.934	21.328.111	26.498	2.968.592	180.437	681%	18.359.518	618%
Orge	4.258.587	431.496.587	407.512	43.343.361	3.851.075	945%	388.153.227	896%
Seigle								
Sorgho								
Mais	527.719	53.631.245	486.372	50.076.981	41.346	9%	3.554.264	7%
TOTAL CEREALES	4.993.240	506.455.943	920.382	96.388.934	4.072.858	443%	410.067.009	425%
TOTAL RIZ								
Alcool Public	976.943	36.253.210	2.054.600	87.707.409	-1.077.656	-52%	-51.454.199	-59%
Alcool Mixte	4.928	70.593	11.894	184.533	-6.966	-59%	-113.941	-62%
TOTAL ALCOOL (HL 100%)	981.872	36.323.802	2.066.494	87.891.942	-1.084.622	-52%	-51.568.140	-59%
LEP	257.261	383.850.497	82.916	141.206.443	174.345	210%	242.644.054	172%
Beurre	75.872	165.260.250	40.452	89.143.841	35.420	88%	76.116.409	85%
TOTAL LAIT ET BEURRE	333.133	549.110.747	123.368	230.350.284	209.765	170%	318.760.463	138%
Sucre blanc	18.961	6.101.911	92.541	30.503.285	-73.580	-80%	-24.401.375	-80%
Sucre brut			1.661	401.616	-1.661	-100%	-401.616	-100%
TOTAL SUCRE	18.961	6.101.911	94.202	30.904.901	-75.241	-80%	-24.802.990	-80%
Bov. carc.								
Bov. des.								
Eq. carc.								
TOTAL EQ. CARCASSES								
GRAND TOTAL		1.097.992.403		445.536.061			652.456.342	146%

SOURCE :

The declarations of the Member States before controls.

THE PUBLIC STORAGE FLASH REPORT AS AT									
30-abr-10									
ESPAÑA									
PRODUCTS	YEAR-TO-DATE		OPENING BALANCE		CHANGE IN QTY		CHANGE IN VALUE		
	QUANTITY (in tonnes or hl)	VALUE (in Euro)	QUANTITY (in tonnes or hl)	VALUE (in Euro)	ABSOLUTE (in tonnes or hl)	%	ABSOLUTE (in Euro)	%	
	(a)	(b)	(c)	(d)	(e)=(a)-(c)	(f)=(e)/(c)*%	(g)=(b)-(d)	(h)=(g)/(d)*%	
Ble panifiable									
Orge									
Seigle									
Sorgho									
Mais									
TOTAL CEREALES									
RIZ									
Alcool Public	507.820	18.901.071	574.043	21.365.391	-66.223	-12%	-2.464.320	-12%	
Alcool Mixte									
TOT. ALCOOL (HL)	507.820	18.901.071	574.043	21.365.391	-66.223	-12%	-2.464.320	-12%	
LEP	1.382	2.105.975	1.603	2.442.752	-221	-14%	-336.777	-14%	
Beurre	9.335	20.336.764	9.335	20.336.778			-14	0%	
TOTAL L & B	10.717	22.442.739	10.936	22.779.530	-221	-2%	-336.791	-1%	
Sucre Blanc									
Sucre Brut									
TOTAL SUCRE									
Bov. carc.									
Bov. des.									
Eq. carc.									
TOTAL EQ. CARC.									
GRAND TOTAL		41.343.810		44.144.921			-2.801.111	-6%	

30-abr-10

