

CHOOSE COUNTRY

EU TOTAL	YEAR-TO-DATE		OPENING BALANCE (1)		CHANGE IN QTY		CHANGE IN VALUE	
	QUANTITY (tn or hl)	VALUE (in Euro)	QUANTITY (tn or hl)	VALUE (in Euro)	ABSOLUTE (tn or hl)	%	ABSOLUTE (in Euro)	%
CLICK TOTALS FOR GRAPHICS	(a)	(b)	(c)	(d)	(e)=(a)-(c)	(f)=(e)/(c)*%	(g)=(b)-(d)	(h)=(g)/(d)*%
Blé panifiable	121.067	12.260.470	234.577	23.710.769	-113.510	-48%	-11.450.299	-48%
Orge	2.180.719	221.646.618	5.326.162	540.451.972	-3.145.442	-59%	-318.805.355	-59%
Seigle								
Sorgho								
Mais			3.142	318.234	-3.142	-100%	-318.234	-100%
TOTAL CEREALES	2.301.786	233.907.087	5.563.880	564.480.975	-3.262.094	-59%	-330.573.888	-59%
TOTAL RIZ								
Alcool Public	243.693	8.285.450	628.630	21.369.957	-384.938	-61%	-13.084.507	-61%
Alcool Mixte			1.173	4.645	-1.173	-100%	-4.645	-100%
TOTAL ALCOOL (HL 100%)	243.693	8.285.450	629.803	21.374.602	-386.111	-61%	-13.089.152	-61%
LEP	147.365	219.701.232	197.223	294.161.988	-49.858	-25%	-74.460.756	-25%
Beurre	1.435	3.103.957	1.545	3.343.770	-110	-7%	-239.813	-7%
TOTAL LAIT ET BEURRE	148.800	222.805.189	198.769	297.505.758	-49.968	-25%	-74.700.569	-25%
Sucre Blanc			9	3.052	-9	-100%	-3.052	-100%
Sucre Brut								
TOTAL SUCRE			9	3.052	-9	-100%	-3.052	-100%
Bov. carc.								
Bov. des.								
Eq. carc.								
TOTAL EQ. CARCASSES								
GRAND TOTAL		464.997.726		883.364.387			-418.366.661	-47%

SOURCE : The declarations of the Member States before controls.

(1) Period 13/2010 annual declaration

quantities are expressed in
tonnes (alcohol in hl 100%)

ACCOUNTING VALUE OF THE PUBLIC INTERVENTION STOCKS AS AT :
(BEFORE THE COMPLEMENTARY DEPRECIATION)

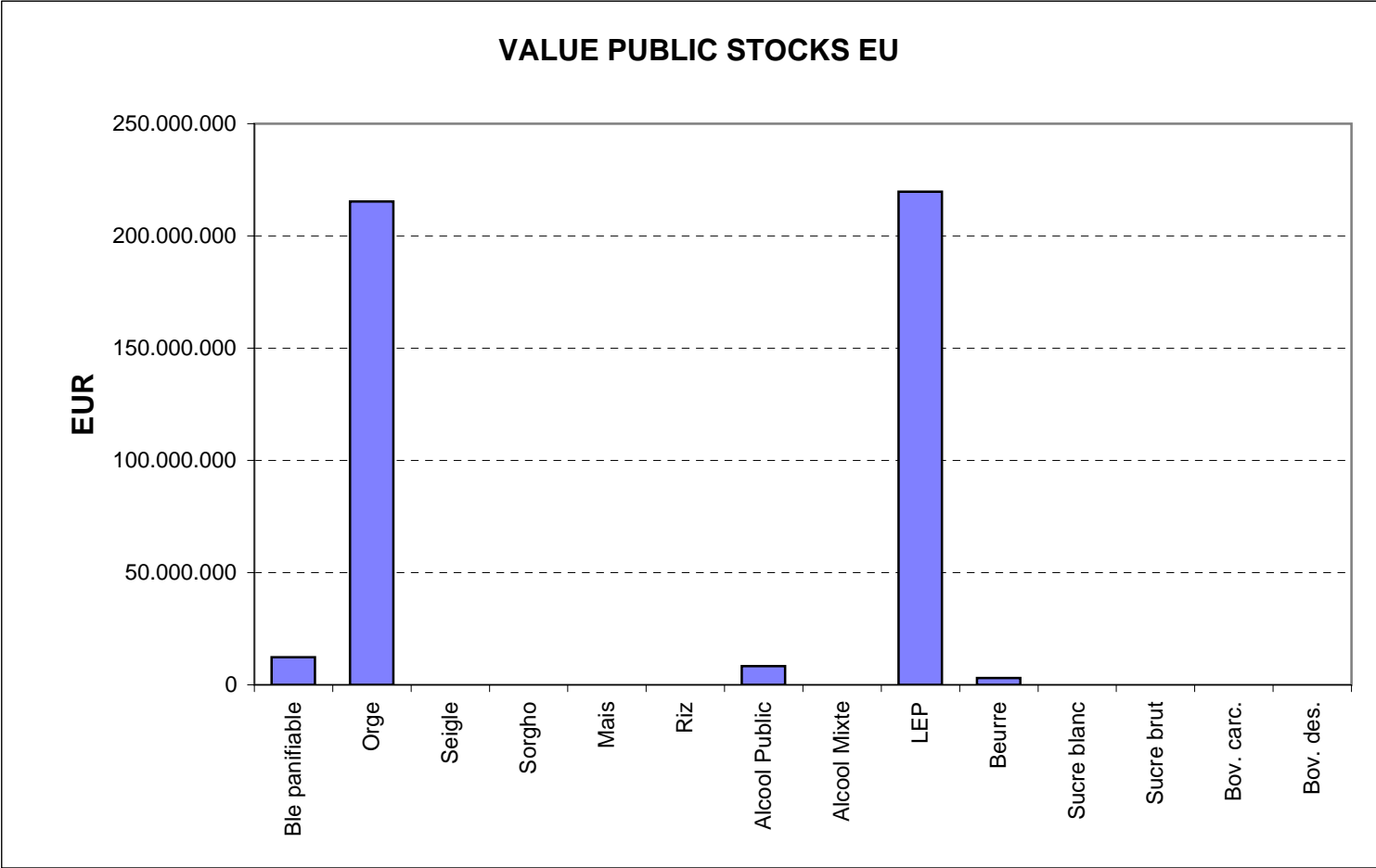
30-abr-11

AGRI I.4

J. FLORET tel. 53236

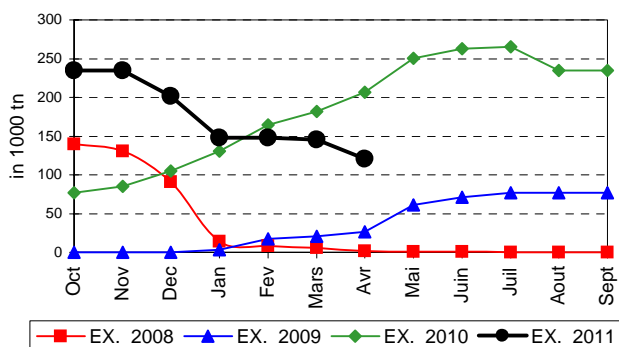
Produits		BE	BG	CZ	DK	DE	EE	IE	EL	ES	FR	IT	CY	LV	LT	LU	HU	MT	NL	OS	PL	PO	RO	SI	SK	FIN	SE	UK	TOTAL	
BLE PANIF	quant.		3.587												91		99.106								18.283					121.067
	valeur		355.892												8.867		10.039.451									1.856.259				
ORGE	quant.	13.691	42.101	153.927		501.935	22.836				522.311			18.597	43.971		267.472		5.621	180.422			61.433		71.597	128.624	84.231	61.951	2.180.719	
	valeur	1.390.075	4.348.146	16.231.550		50.444.512	2.315.381				53.160.818			1.874.041	4.429.625		27.282.114		570.686	18.191.965			6.273.544		7.287.813	13.140.269	8.570.456	6.135.621	221.646.618	
SEIGLE	quant.																													
SORGHO	quant.																													
MAIS	quant.																													
TOT.CER	quant.	13.691	45.687	153.927		501.935	22.836				522.311			18.597	44.062		366.578		5.621	180.422			61.433		89.879	128.624	84.231	61.951	2.301.786	
RIZ	quant.																													
ALC.P.	quant.								60.181	70.323			7.112				54.638					51.440								243.693
	valeur								2.046.144	2.391.670			241.520				1.857.682					1.748.434								8.285.450
ALC.M.	quant.																													
TOT.ALC.	quant.								60.181	70.323			7.112				54.638					51.440								243.693
LEP	quant.	11.153		711		53.005	1.365	32.020			22.438				4.282				3.527		2.597	607				868	191	14.601	147.365	
	valeur	16.515.735		1.120.357		78.865.991	1.952.961	47.834.134			33.618.631				6.417.337				5.272.168		3.850.494	909.158				1.299.984	285.723	21.758.559	219.701.232	
BEURRE	quant.						182								1.254															1.435
	valeur						371.083								2.732.875															3.103.957
TOT L&B	quant.	11.153		711		53.005	1.547	32.020			22.438				5.535				3.527		2.597	607				868	191	14.601	148.800	
S. BLANC	quant.																													
S. BRUT	quant.																													
TOT. SUC	quant.																													
BOV.QUA	quant.																													
BOV.DES	quant.																													
EQ. CARC	quant.																													
TOT EQ	quant.																													
EU TOTAL	valeur	17.905.809	4.704.038	17.351.907		129.310.502	4.639.425	47.834.134	2.046.144	2.391.670	86.779.450		241.520	1.874.041	13.588.704	39.179.247		5.272.168	570.686	22.042.459	2.657.592	6.273.544		9.144.073	14.440.253	8.856.179	27.894.180		464.997.726	

PUBLIC INTERVENTION STOCKS

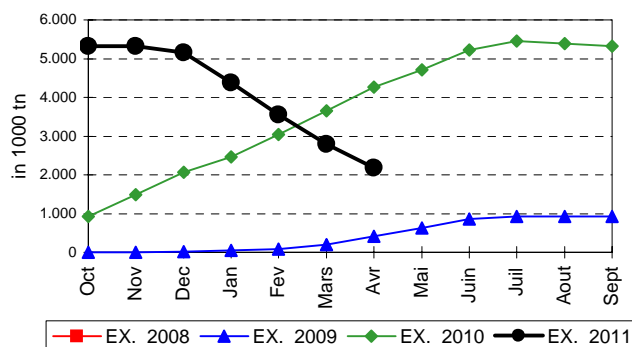


EVOLUTION IN QUANTITIES OF PUBLIC INTERVENTION STOCKS

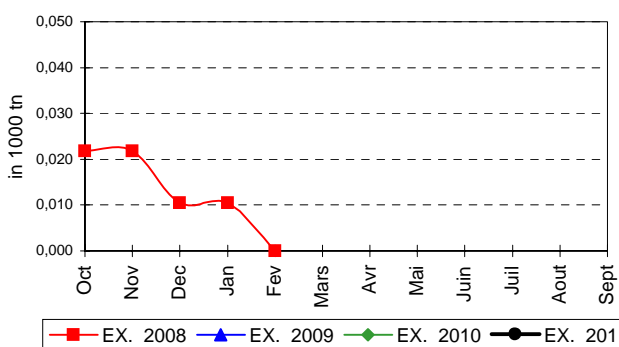
BLE TENDRE PANIFIABLE



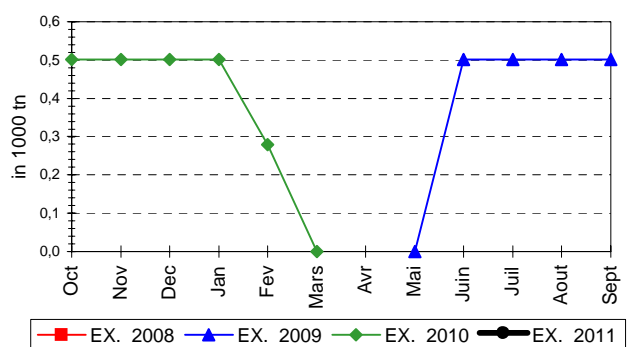
ORGE



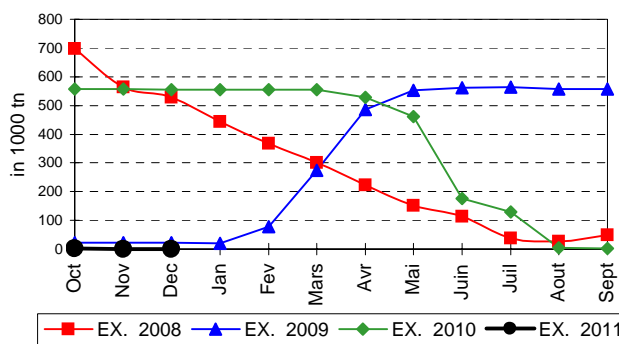
SEIGLE



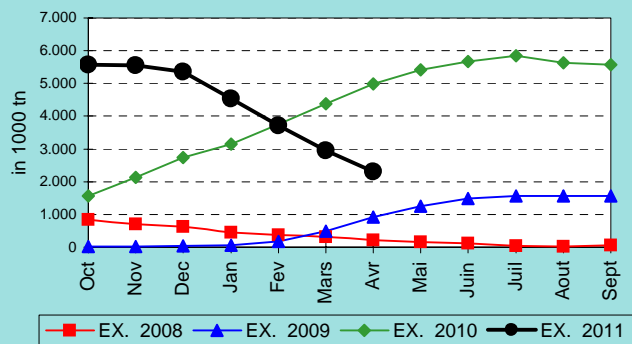
SORGHO



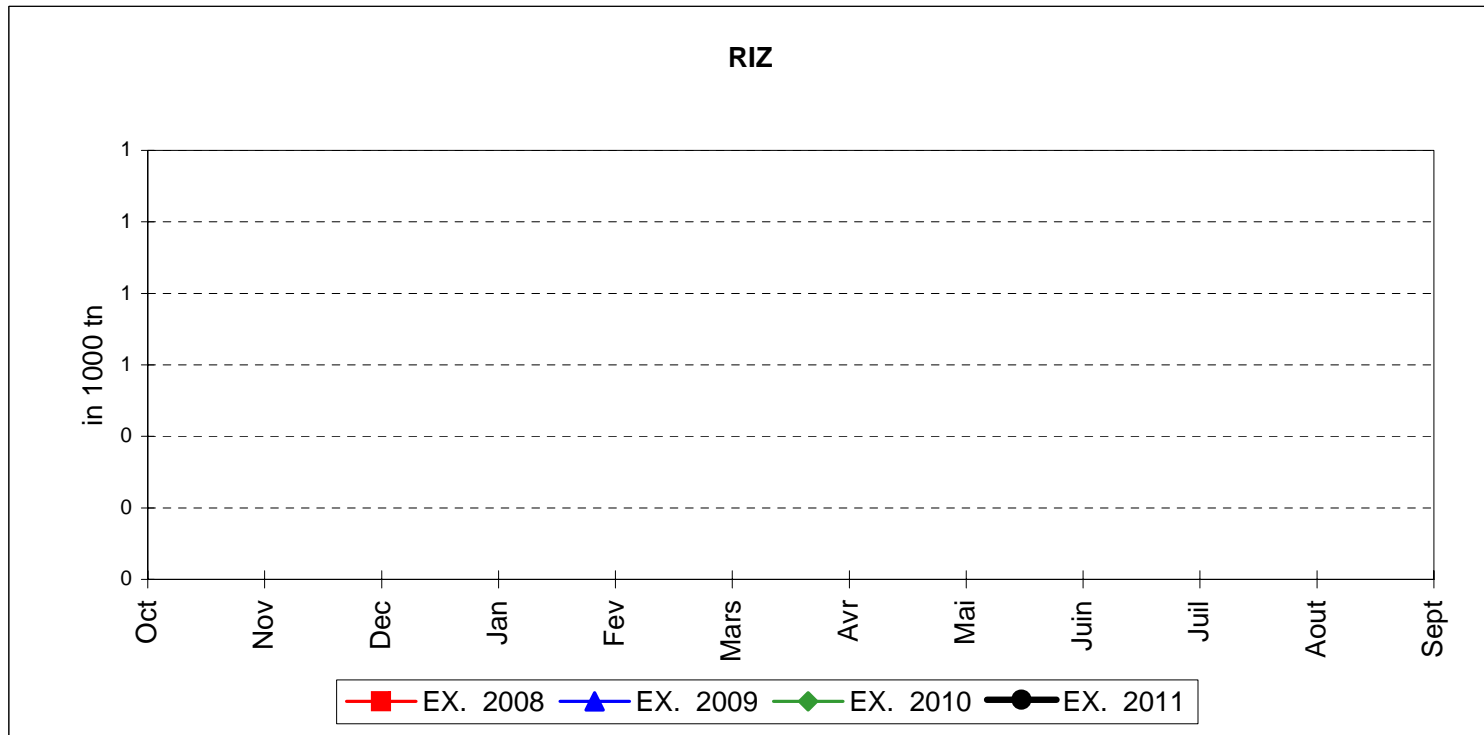
MAIS



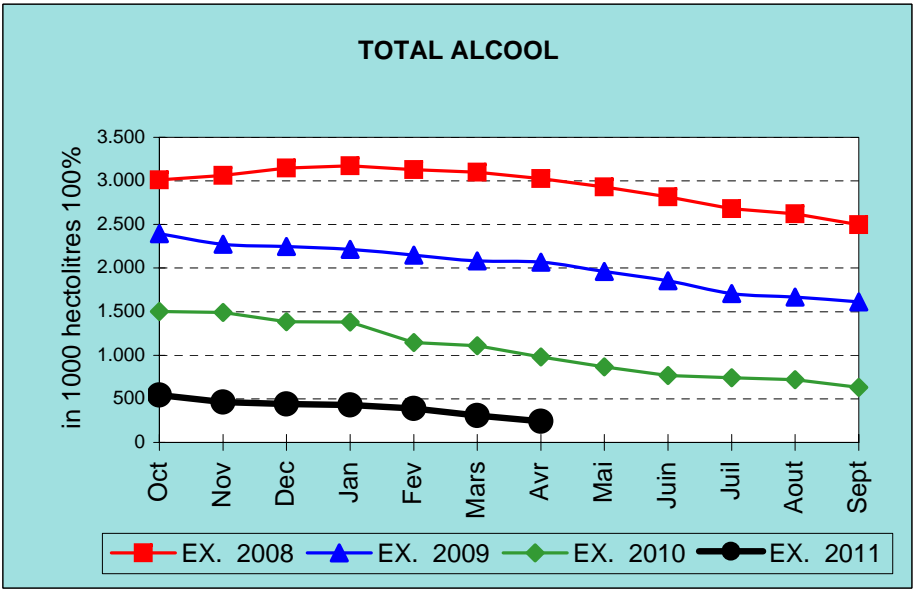
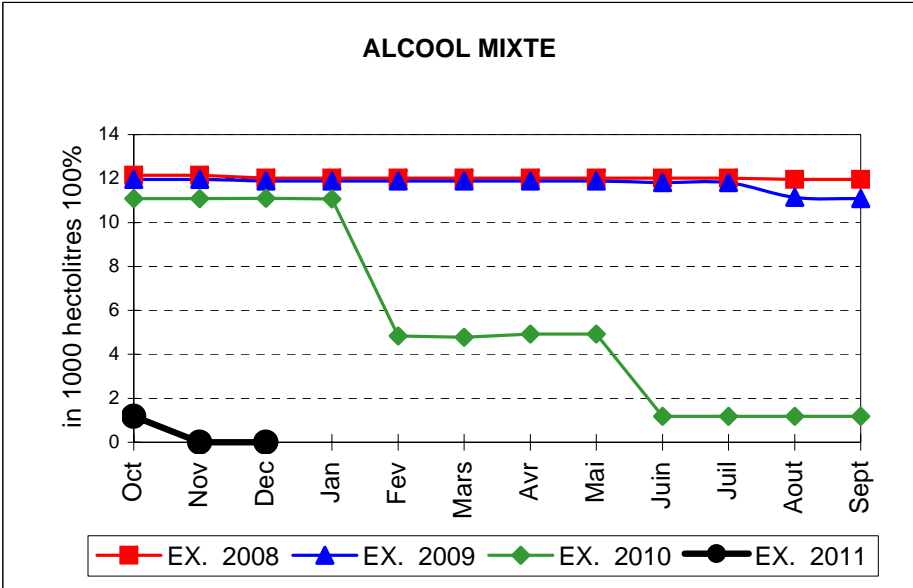
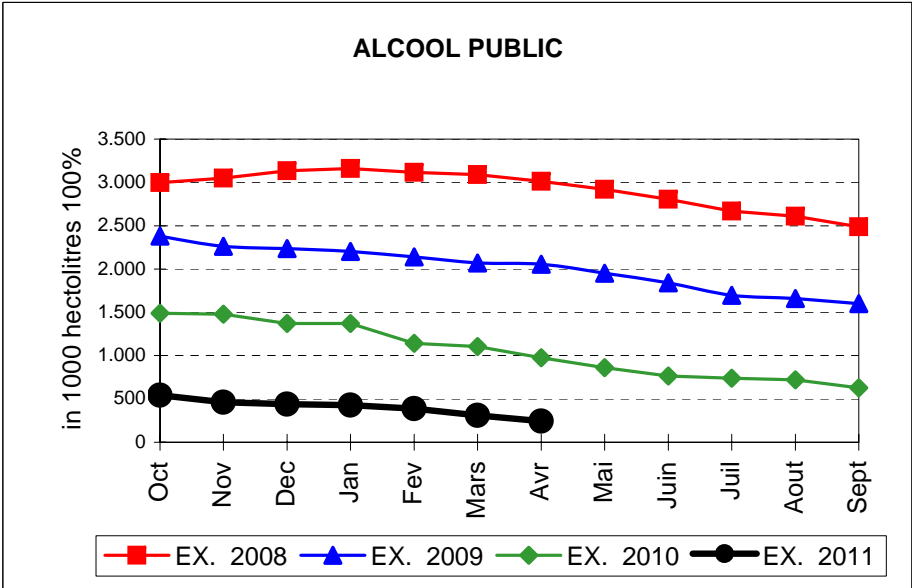
TOTAL CEREALES



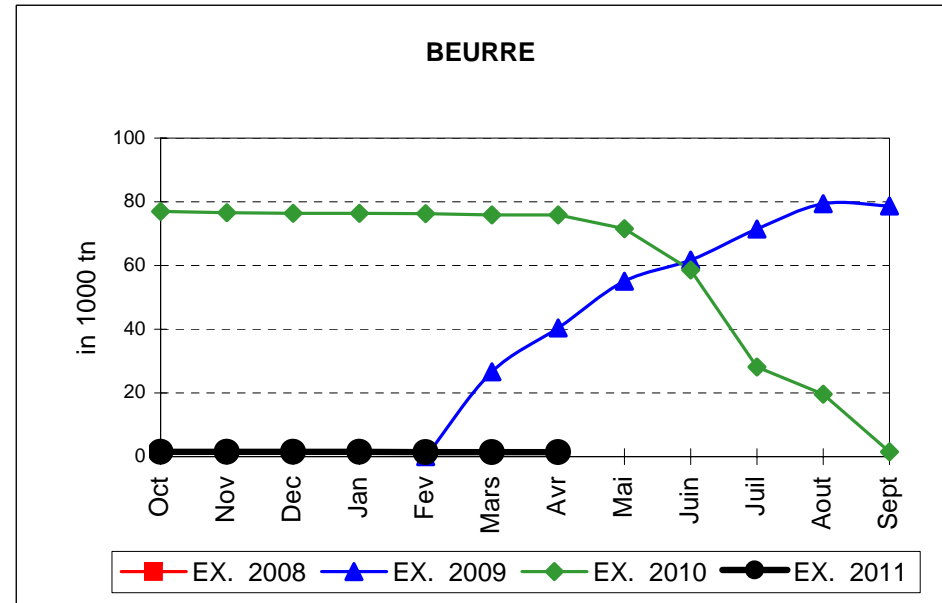
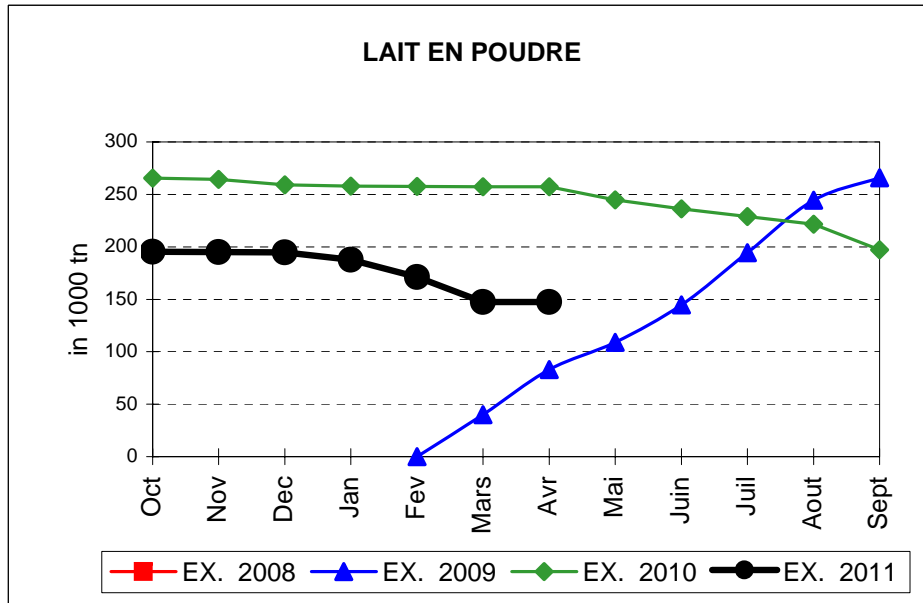
EVOLUTION IN QUANTITIES OF PUBLIC INTERVENTION STOCKS



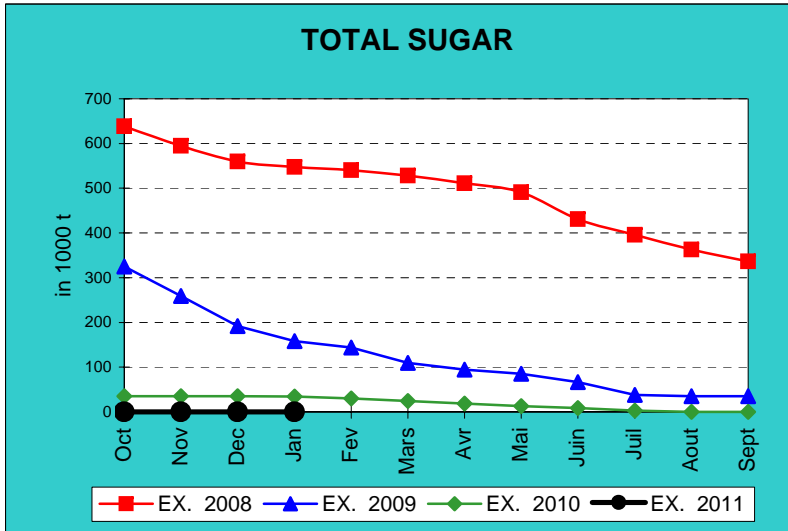
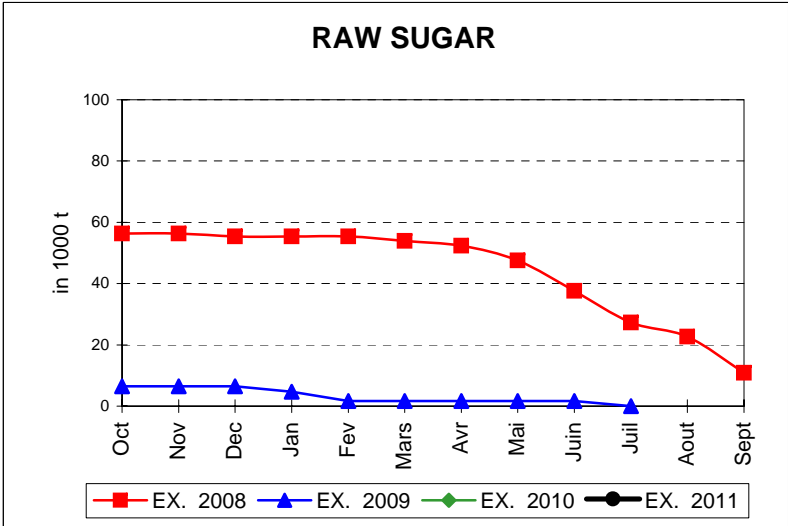
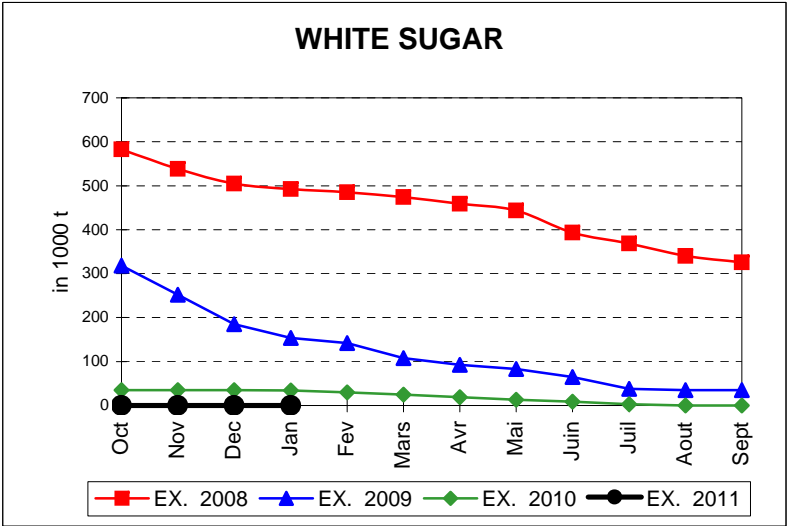
EVOLUTION IN QUANTITIES OF PUBLIC INTERVENTION STOCKS



EVOLUTION IN QUANTITIES OF PUBLIC INTERVENTION STOCKS

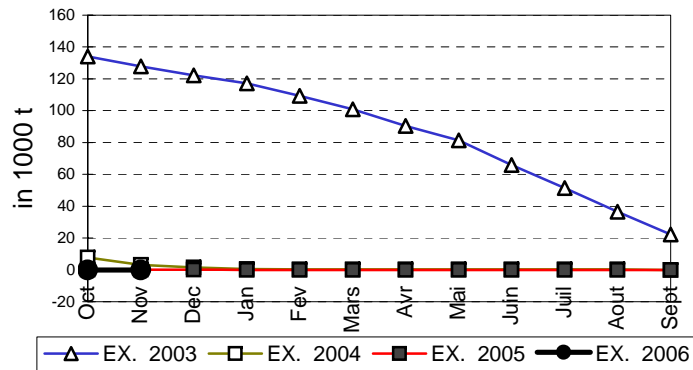


EVOLUTION IN QUANTITIES OF PUBLIC INTERVENTION STOCKS

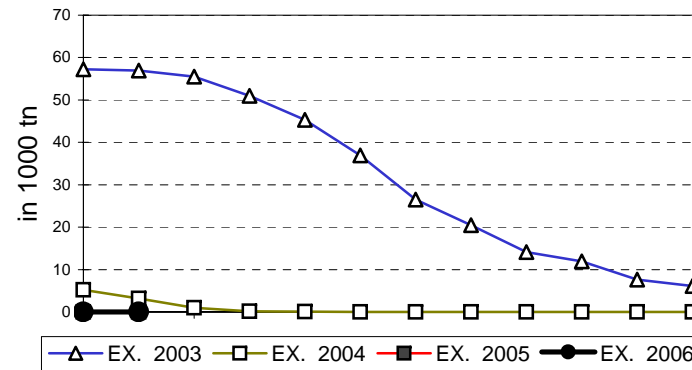


EVOLUTION IN QUANTITIES OF PUBLIC INTERVENTION STOCKS

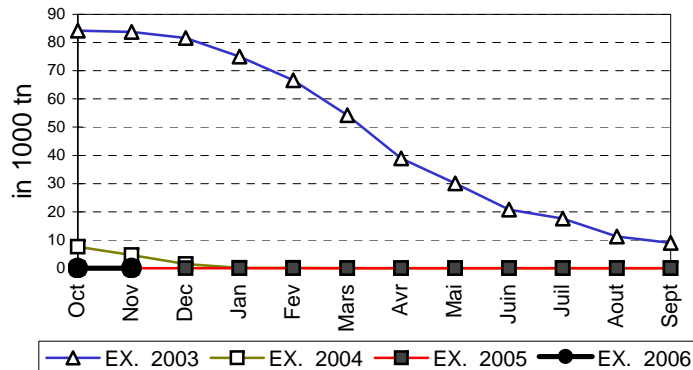
VIANDE BOVINE CARCASSES



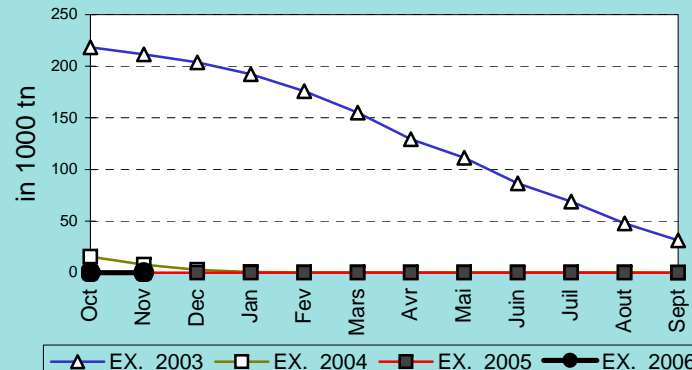
VIANDE BOVINE DESOSSEE



VIANDE DESOSSEE EN EQUIVALENT CARCASSES



TOTAL VIANDE EN EQUIVALENT CARCASSES



COMPARED WITH PREVIOUS MONTH

EU TOTAL	30-abr-11		31-mar-11		CHANGE IN QTY		CHANGE IN VALUE	
	QUANTITY (tn or hl)	VALUE (in Euro)	QUANTITY (tn or hl)	VALUE (In Euro)	ABSOLUTE (tn or hl)	%	ABSOLUTE (in Euro)	%
CLICK TOTALS FOR GRAPHICS	(a)	(b)	(c)	(d)	(e)=(a)-(c)	(f)=(e)/(c)*%	(g)=(b)-(d)	(h)=(g)/(d)*%
Blé panifiable	121.067	12.260.470	145.514	14.739.039	-24.448	-17%	-2.478.569	-17%
Orge	2.180.719	221.646.618	2.798.335	284.207.428	-617.615	-22%	-62.560.810	-22%
Seigle								
Sorgho								
Mais								
TOTAL CEREALES	2.301.786	233.907.087	2.943.849	298.946.467	-642.063	-22%	-65.039.380	-22%
TOTAL RIZ								
Alcool Public	243.693	8.285.450	310.188	10.546.737	-66.496	-21%	-2.261.287	-21%
Alcool Mixte								
TOTAL ALCOOL (HL 100%)	243.693	8.285.450	310.188	10.546.737	-66.496	-21%	-2.261.287	-21%
LEP	147.365	219.701.232	147.390	219.742.398	-25	0%	-41.167	0%
Beurre	1.435	3.103.957	1.435	3.103.957				
TOTAL LAIT ET BEURRE	148.800	222.805.189	148.825	222.846.356	-25	0%	-41.167	0%
Sucre blanc								
Sucre brut								
TOTAL SUCRE								
Bov. carc.								
Bov. des.								
Eq. carc.								
TOTAL EQ. CARCASSES								
GRAND TOTAL		464.997.726		532.339.559			-67.341.833	-13%

SOURCE : The declarations of the Member States before controls.

COMPARED WITH PREVIOUS YEAR

EU TOTAL	30-abr-11		30-abr-10		CHANGE IN QTY		CHANGE IN VALUE	
	QUANTITY (tn or hl)	VALUE (in Euro)	QUANTITY (tn or hl)	VALUE (In Euro)	ABSOLUTE (tn or hl)	%	ABSOLUTE (in Euro)	%
CLICK TOTALS FOR GRAPHICS	(a)	(b)	(c)	(d)	(e)=(a)-(c)	(f)=(e)/(c)*%	(g)=(b)-(d)	(h)=(g)/(d)*%
Blé panifiable	121.067	12.260.470	206.934	21.328.111	-85.868	-41%	-9.067.641	-43%
Orge	2.180.719	221.646.618	4.258.587	431.496.587	-2.077.867	-49%	-209.849.970	-49%
Seigle								
Sorgho								
Mais			527.719	53.631.245	-527.719	-100%	-53.631.245	-100%
TOTAL CEREALES	2.301.786	233.907.087	4.993.240	506.455.943	-2.691.454	-54%	-272.548.856	-54%
TOTAL RIZ								
Alcool Public	243.693	8.285.450	976.943	36.253.210	-733.251	-75%	-27.967.760	-77%
Alcool Mixte			4.928	70.593	-4.928	-100%	-70.593	-100%
TOTAL ALCOOL (HL 100%)	243.693	8.285.450	981.872	36.323.802	-738.179	-75%	-28.038.352	-77%
LEP	147.365	219.701.232	257.261	383.850.497	-109.896	-43%	-164.149.265	-43%
Beurre	1.435	3.103.957	75.872	165.260.250	-74.437	-98%	-162.156.292	-98%
TOTAL LAIT ET BEURRE	148.800	222.805.189	333.133	549.110.747	-184.333	-55%	-326.305.558	-59%
Sucre blanc			18.961	6.101.911	-18.961	-100%	-6.101.911	-100%
Sucre brut								
TOTAL SUCRE			18.961	6.101.911	-18.961	-100%	-6.101.911	-100%
Bov. carc.								
Bov. des.								
Eq. carc.								
TOTAL EQ. CARCASSES								
GRAND TOTAL		464.997.726		1.097.992.403			-632.994.677	-58%

SOURCE :

The declarations of the Member States before controls.

THE PUBLIC STORAGE FLASH REPORT AS AT										30-abr-11
ESPAÑA										
PRODUCTS	YEAR-TO-DATE		OPENING BALANCE		CHANGE IN QTY		CHANGE IN VALUE			
	QUANTITY (in tonnes or hl)	VALUE (in Euro)	QUANTITY (in tonnes or hl)	VALUE (in Euro)	ABSOLUTE (in tonnes or hl)	%	ABSOLUTE (in Euro)	%		
	(a)	(b)	(c)	(d)	(e)=(a)-(c)	(f)=(e)/(c)*%	(g)=(b)-(d)	(h)=(g)/(d)*%		
Ble panifiable										
Orge										
Seigle										
Sorgho										
Mais										
TOTAL CEREALES										
RIZ										
Alcool Public	70.323	2.391.670	373.725	12.711.227	-303.402	-81%	-10.319.557	-81%		
Alcool Mixte										
TOT. ALCOOL (HL)	70.323	2.391.670	373.725	12.711.227	-303.402	-81%	-10.319.557	-81%		
LEP										
Beurre										
TOTAL L & B										
Sucre Blanc										
Sucre Brut										
TOTAL SUCRE										
Bov. carc.										
Bov. des.										
Eq. carc.										
TOTAL EQ. CARC.										
GRAND TOTAL		2.391.670		12.711.227				-10.319.557	-81%	

30-abr-11

