

CHOOSE COUNTRY

EU TOTAL	YEAR-TO-DATE		OPENING BALANCE (1)		CHANGE IN QTY		CHANGE IN VALUE	
	QUANTITY (tn or hl)	VALUE (in Euro)	QUANTITY (tn or hl)	VALUE (in Euro)	ABSOLUTE (tn or hl)	%	ABSOLUTE (in Euro)	%
CLICK TOTALS FOR GRAPHICS	(a)	(b)	(c)	(d)	(e)=(a)-(c)	(f)=(e)/(c)*%	(g)=(b)-(d)	(h)=(g)/(d)*%
Blé panifiable								
Orge	162.104	16.397.398	165.326	16.717.611	-3.222	-2%	-320.214	-2%
Seigle								
Sorgho								
Mais								
TOTAL CEREALES	162.104	16.397.398	165.326	16.717.611	-3.222	-2%	-320.214	-2%
TOTAL RIZ								
Alcool Public	2.791	78.263	55.857	1.566.771	-53.066	-95%	-1.488.508	-95%
Alcool Mixte								
TOTAL ALCOOL (HL 100%)	2.791	78.263	55.857	1.566.771	-53.066	-95%	-1.488.508	-95%
LEP	2.993	4.421.689	53.556	79.832.007	-50.563	-94%	-75.410.318	-94%
Beurre	1	2.922	1	2.922				
TOTAL LAIT ET BEURRE	2.994	4.424.611	53.558	79.834.930	-50.563	-94%	-75.410.318	-94%
Sucre Blanc								
Sucre Brut								
TOTAL SUCRE								
Bov. carc.								
Bov. des.								
Eq. carc.								
TOTAL EQ. CARCASSES								
GRAND TOTAL		20.900.273		98.119.313			-77.219.040	-79%

SOURCE : The declarations of the Member States before controls.

(1) Period 13/2011 annual declaration

quantities are expressed in
tonnes (alcohol in hl 100%)

ACCOUNTING VALUE OF THE PUBLIC INTERVENTION STOCKS AS AT :
(BEFORE THE COMPLEMENTARY DEPRECIATION)

30-abr-12

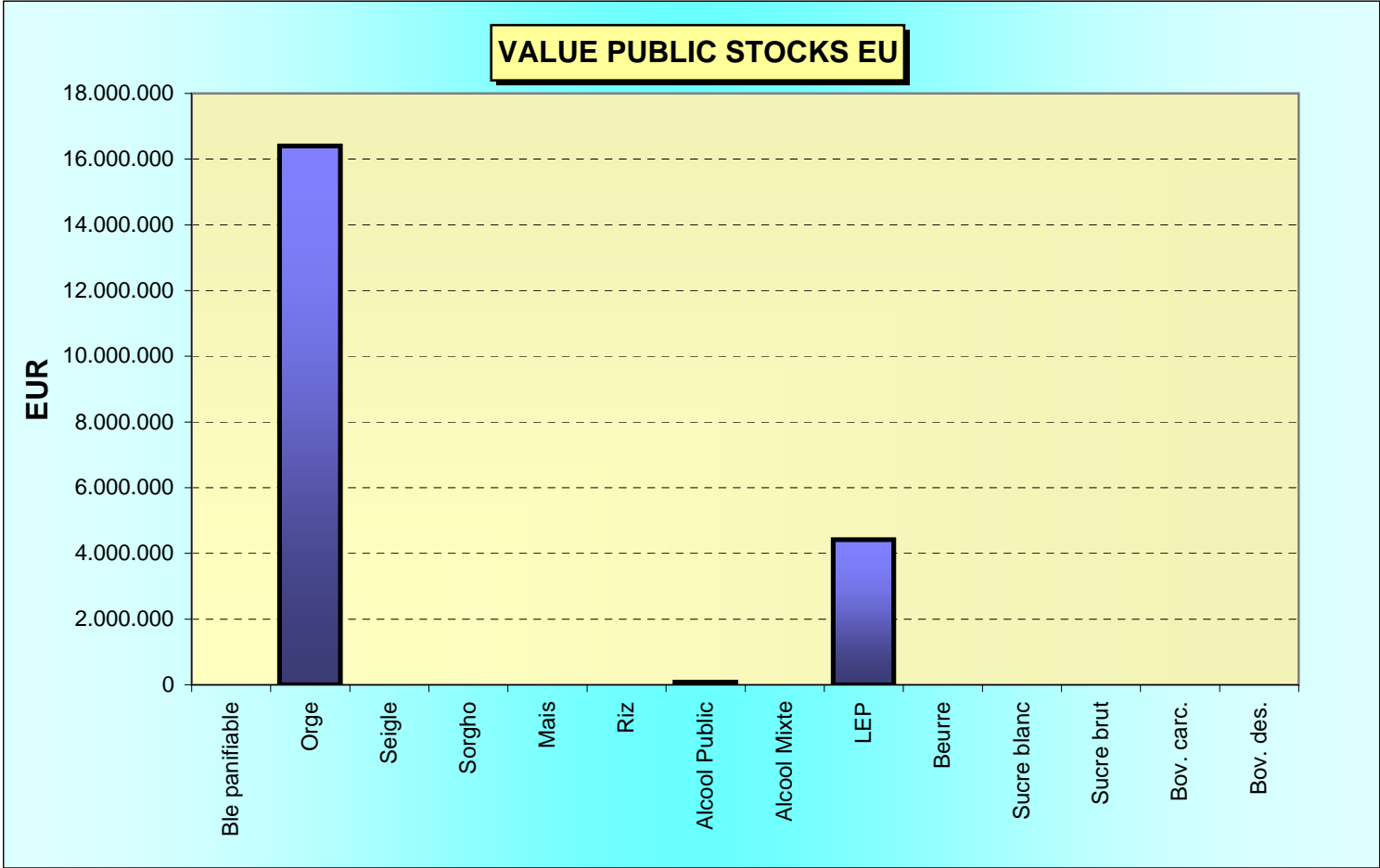
AGRI I.4

G. MERTENS tel. 65910

Produits		BE	BG	CZ	DK	DE	EE	IE	EL	ES	FR	IT	CY	LV	LT	LU	HU	MT	NL	OS	PL	PO	RO	SI	SK	FIN	SE	UK	TOTAL	
BLE PANIF	quant.																													
	valeur																													
ORGE	quant.					16.856					396															75.317	64.374	5.161	162.104	
	valeur					1.694.032					40.123																7.630.339	6.521.713	511.191	16.397.398
SEIGLE	quant.																													
SEIGLE	valeur																													
SORGHO	quant.																													
SORGHO	valeur																													
MAIS	quant.																													
MAIS	valeur																													
TOT.CER	quant.					16.856					396															75.317	64.374	5.161	162.104	
TOT.CER	valeur																													
RIZ	quant.																													
RIZ	valeur																													
ALC.P.	quant.												2.791																2.791	
ALC.P.	valeur												78.263																78.263	
ALC.M.	quant.																													
ALC.M.	valeur																													
TOT.ALC.	quant.												2.791																2.791	
TOT.ALC.	valeur																													
LEP	quant.					805	635												288			0						1.265	2.993	
LEP	valeur					1.197.422	908.769												430.169			674						1.884.656	4.421.689	
BEURRE	quant.						1									1													1	
BEURRE	valeur						1.124								1.798														2.922	
TOT L&B	quant.					805	636									1			288			0						1.265	2.994	
TOT L&B	valeur																													
S. BLANC	quant.																													
S. BLANC	valeur																													
S. BRUT	quant.																													
S. BRUT	valeur																													
TOT. SUC	quant.																													
TOT. SUC	valeur																													
BOV.QUA	quant.																													
BOV.QUA	valeur																													
BOV.DES	quant.																													
BOV.DES	valeur																													
EQ. CARC	quant.																													
TOT EQ	quant.																													
TOT EQ	valeur																													
EU TOTAL	valeur					2.891.454	909.893				40.123		78.263		1.798				430.169			674					7.630.339	6.521.713	2.395.847	20.900.273

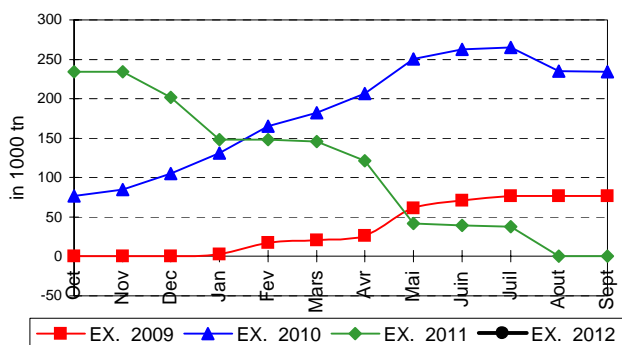
PUBLIC INTERVENTION STOCKS

VALUE PUBLIC STOCKS EU

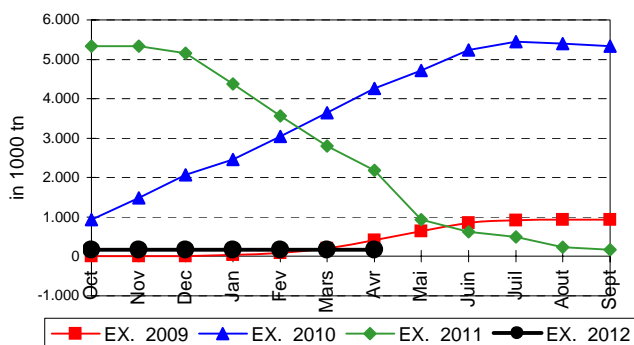


EVOLUTION IN QUANTITIES OF PUBLIC INTERVENTION STOCKS

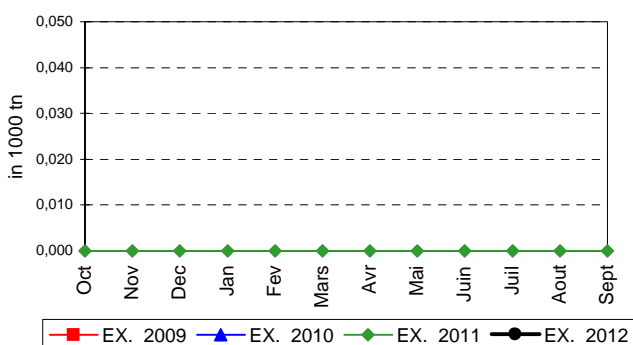
BLE TENDRE PANIFIABLE



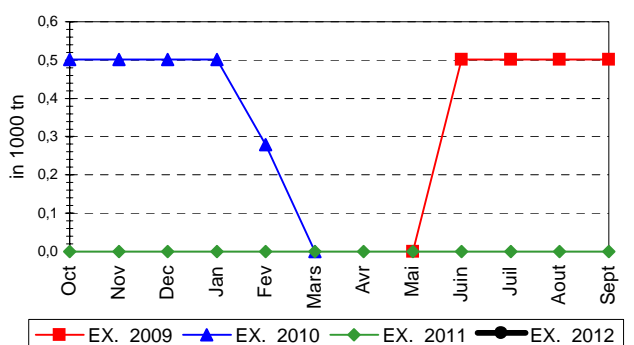
ORGE



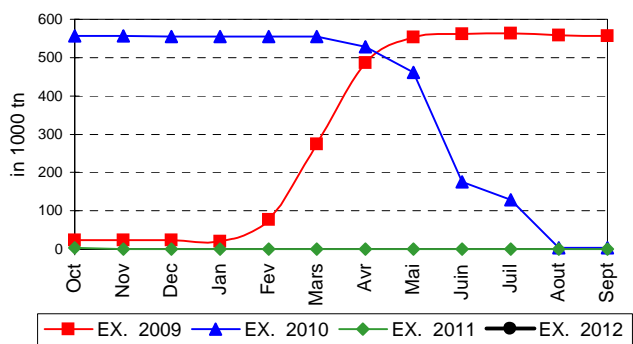
SEIGLE



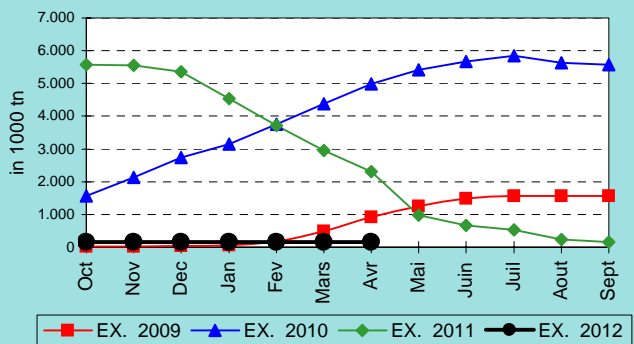
SORGHO



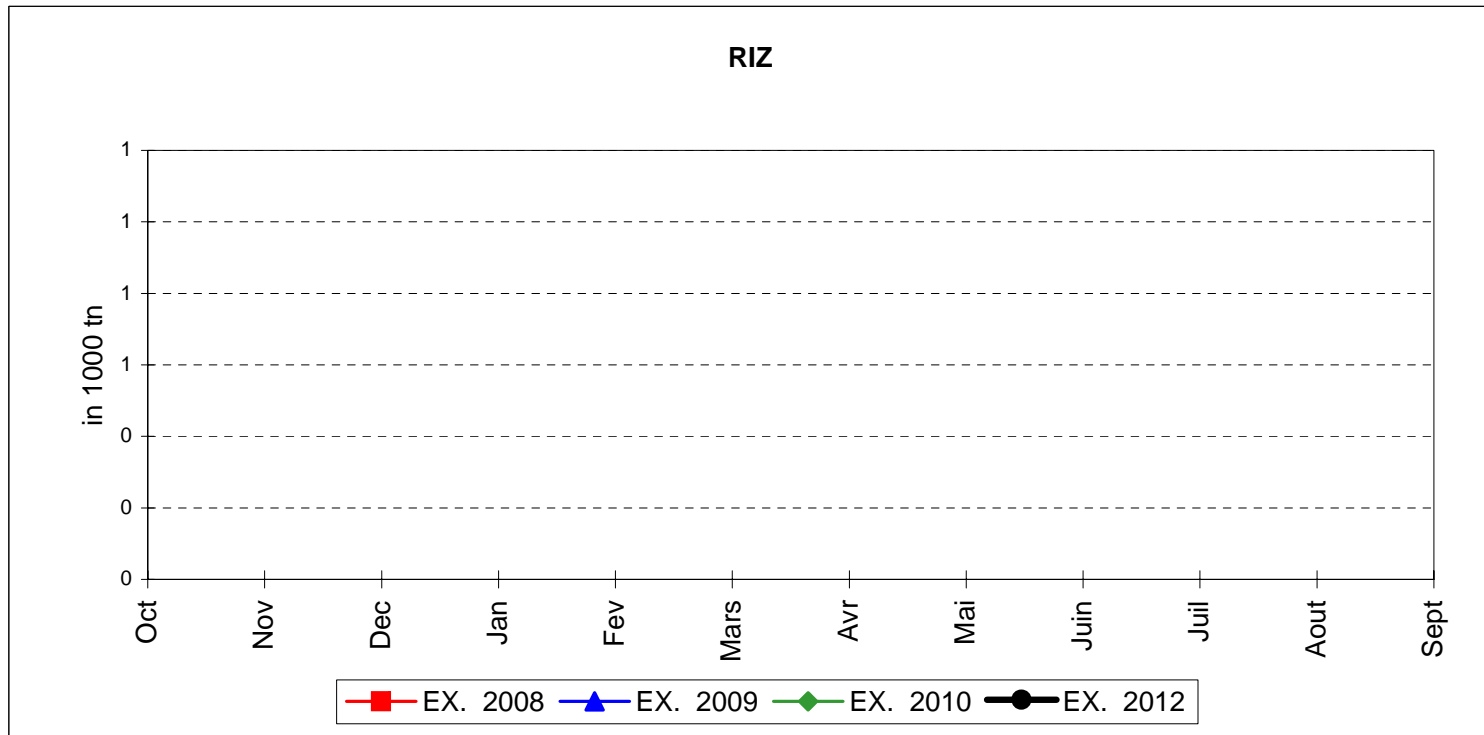
MAIS



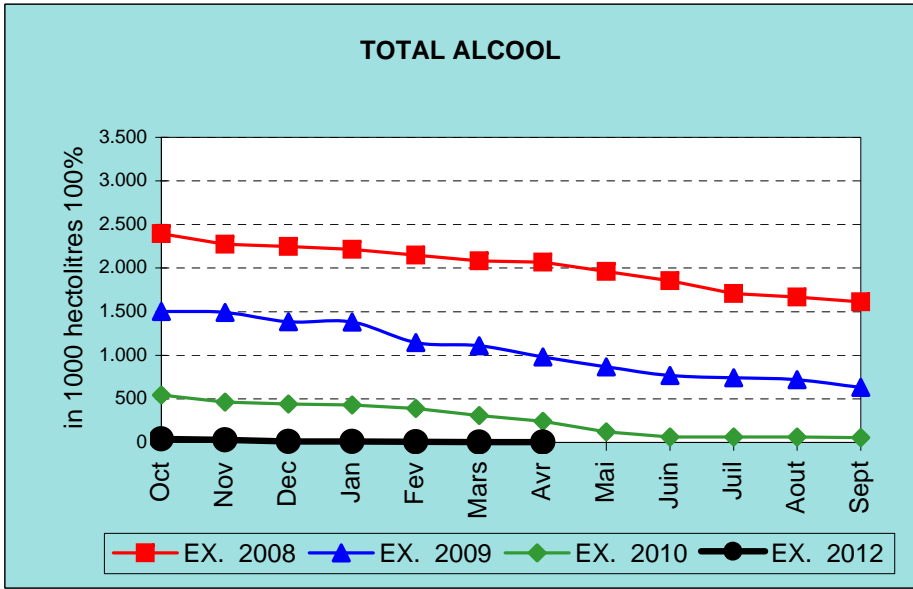
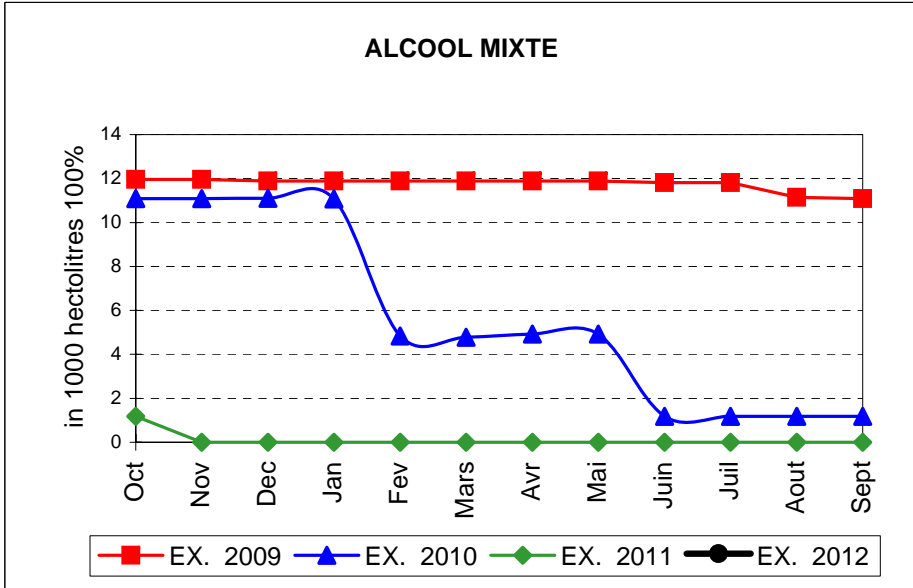
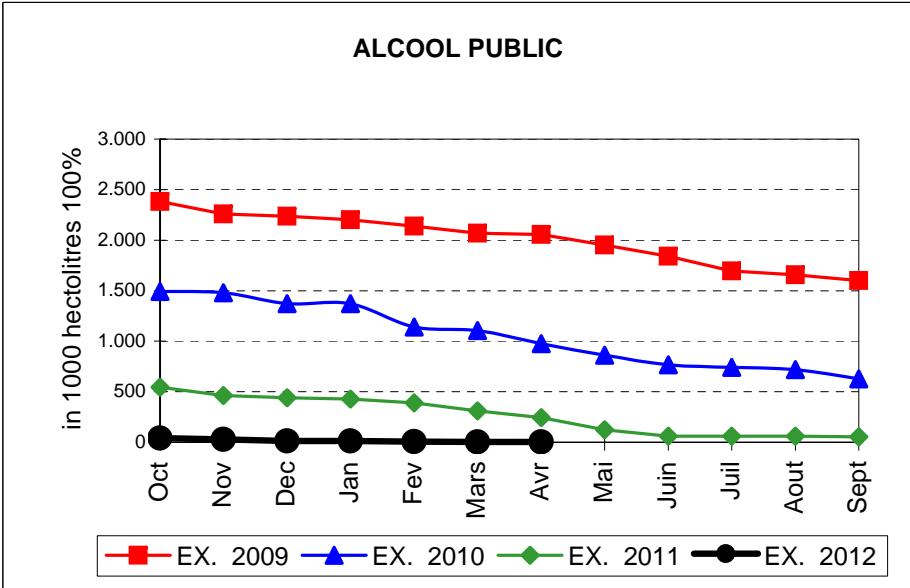
TOTAL CEREALES



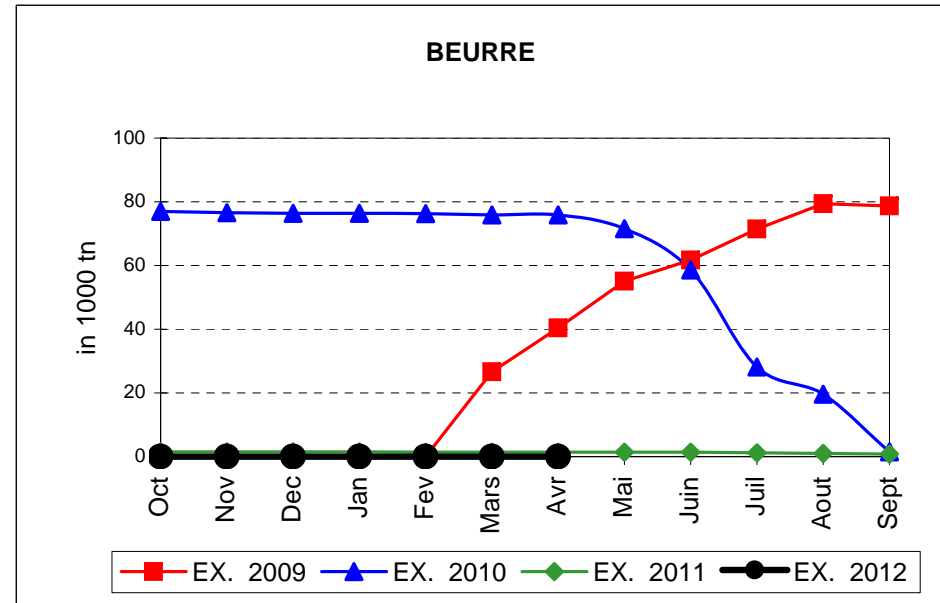
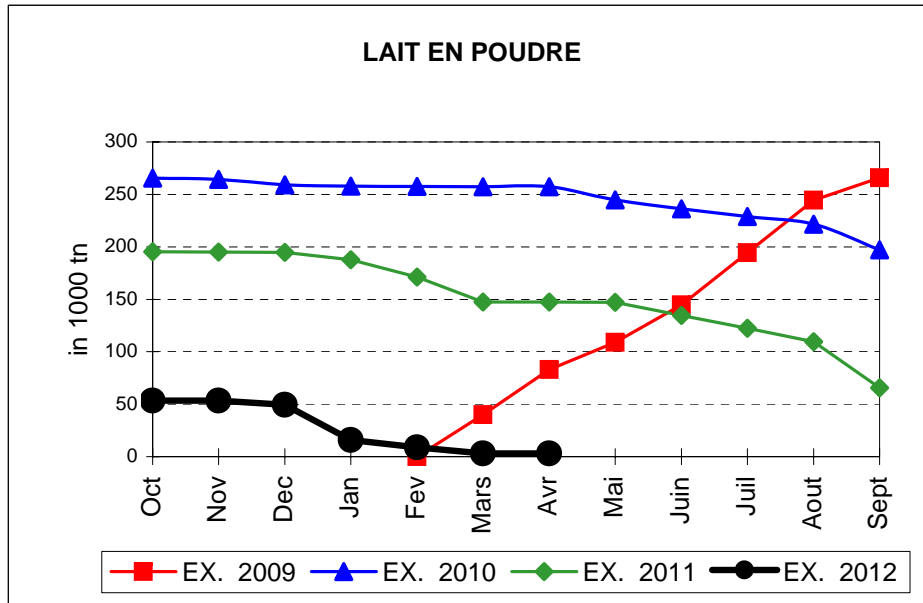
EVOLUTION IN QUANTITIES OF PUBLIC INTERVENTION STOCKS



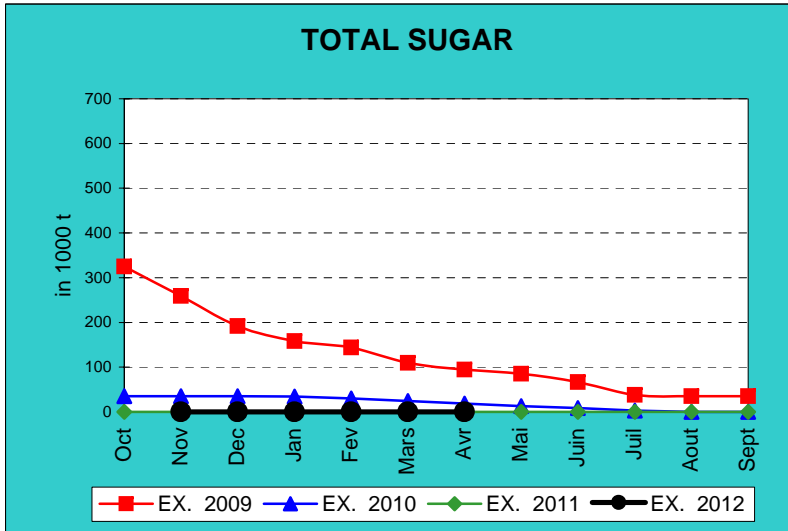
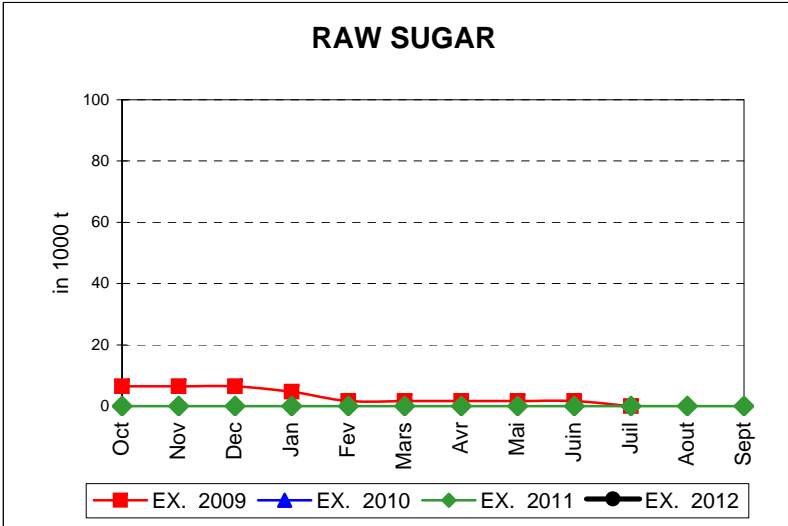
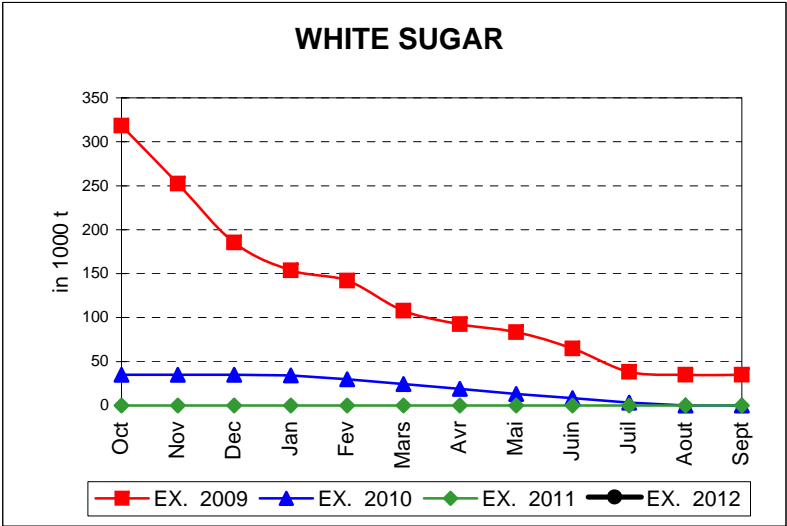
EVOLUTION IN QUANTITIES OF PUBLIC INTERVENTION STOCKS



EVOLUTION IN QUANTITIES OF PUBLIC INTERVENTION STOCKS

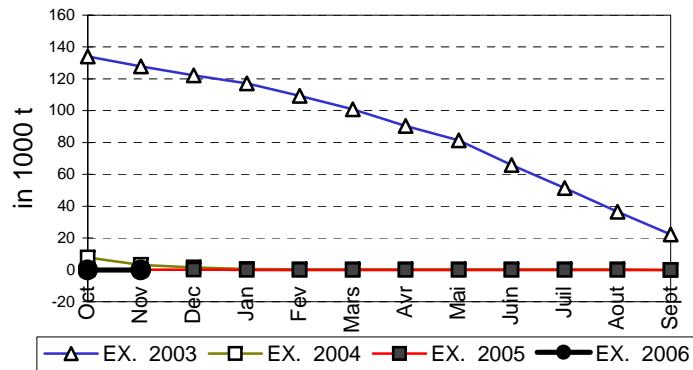


EVOLUTION IN QUANTITIES OF PUBLIC INTERVENTION STOCKS

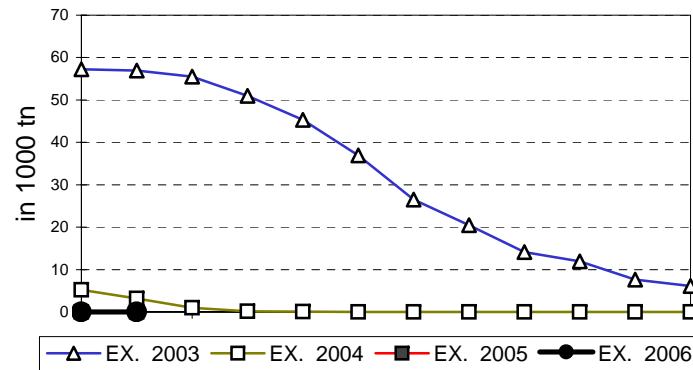


EVOLUTION IN QUANTITIES OF PUBLIC INTERVENTION STOCKS

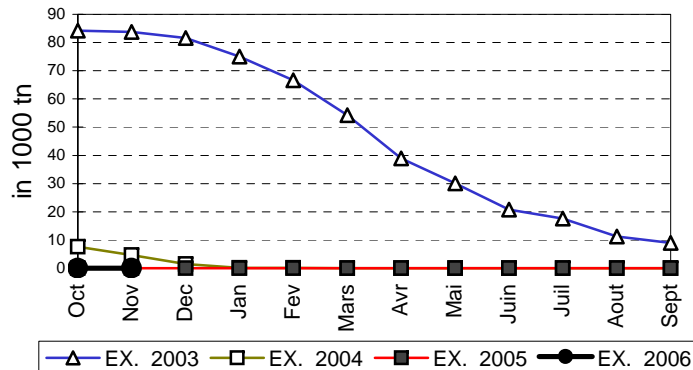
VIANDE BOVINE CARCASSES



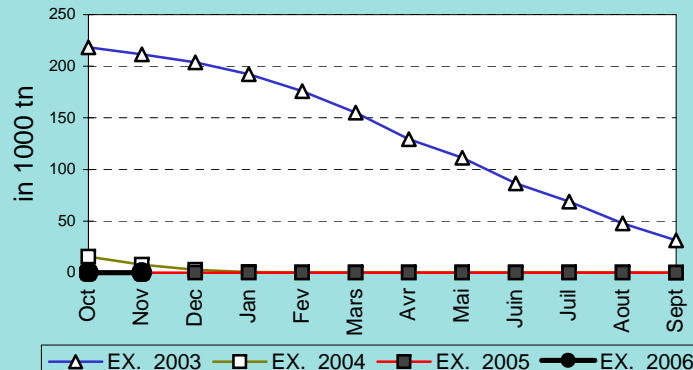
VIANDE BOVINE DESOSSEE



VIANDE DESOSSEE EN EQUIVALENT CARCASSES



TOTAL VIANDE EN EQUIVALENT CARCASSES



COMPARED WITH PREVIOUS MONTH

EU TOTAL	30-abr-12		31-mar-12		CHANGE IN QTY		CHANGE IN VALUE	
	QUANTITY (tn or hl)	VALUE (in Euro)	QUANTITY (tn or hl)	VALUE (In Euro)	ABSOLUTE (tn or hl)	%	ABSOLUTE (in Euro)	%
CLICK TOTALS FOR GRAPHICS	(a)	(b)	(c)	(d)	(e)=(a)-(c)	(f)=(e)/(c)*%	(g)=(b)-(d)	(h)=(g)/(d)*%
Blé panifiable								
Orge	162.104	16.397.398	162.104	16.397.398				
Seigle								
Sorgho								
Mais								
TOTAL CEREALES	162.104	16.397.398	162.104	16.397.398				
TOTAL RIZ								
Alcool Public	2.791	78.263	2.791	78.263				
Alcool Mixte								
TOTAL ALCOOL (HL 100%)	2.791	78.263	2.791	78.263				
LEP	2.993	4.421.689	2.993	4.421.689				
Beurre	1	2.922	1	2.922				
TOTAL LAIT ET BEURRE	2.994	4.424.611	2.994	4.424.611				
Sucre blanc								
Sucre brut								
TOTAL SUCRE								
Bov. carc.								
Bov. des.								
Eq. carc.								
TOTAL EQ. CARCASSES								
GRAND TOTAL		20.900.273		20.900.273				

SOURCE : The declarations of the Member States before controls.

COMPARED WITH PREVIOUS YEAR

EU TOTAL	30-abr-12		30-abr-11		CHANGE IN QTY		CHANGE IN VALUE	
	QUANTITY (tn or hl)	VALUE (in Euro)	QUANTITY (tn or hl)	VALUE (In Euro)	ABSOLUTE (tn or hl)	%	ABSOLUTE (in Euro)	%
CLICK TOTALS FOR GRAPHICS	(a)	(b)	(c)	(d)	(e)=(a)-(c)	(f)=(e)/(c)*%	(g)=(b)-(d)	(h)=(g)/(d)*%
Blé panifiable			121.067	12.260.470	-121.067	-100%	-12.260.470	-100%
Orge	162.104	16.397.398	2.180.719	221.646.618	-2.018.615	-93%	-205.249.220	-93%
Seigle								
Sorgho								
Mais								
TOTAL CEREALES	162.104	16.397.398	2.301.786	233.907.087	-2.139.682	-93%	-217.509.690	-93%
TOTAL RIZ								
Alcool Public	2.791	78.263	243.693	8.285.450	-240.901	-99%	-8.207.187	-99%
Alcool Mixte								
TOTAL ALCOOL (HL 100%)	2.791	78.263	243.693	8.285.450	-240.901	-99%	-8.207.187	-99%
LEP	2.993	4.421.689	147.365	219.701.232	-144.372	-98%	-215.279.542	-98%
Beurre	1	2.922	1.435	3.103.957	-1.434	-100%	-3.101.035	-100%
TOTAL LAIT ET BEURRE	2.994	4.424.611	148.800	222.805.189	-145.806	-98%	-218.380.577	-98%
Sucre blanc								
Sucre brut								
TOTAL SUCRE								
Bov. carc.								
Bov. des.								
Eq. carc.								
TOTAL EQ. CARCASSES								
GRAND TOTAL		20.900.273		464.997.726			-444.097.453	-96%

SOURCE :

The declarations of the Member States before controls.

THE PUBLIC STORAGE FLASH REPORT AS AT						30-abr-12			
ESPAÑA									
PRODUCTS	YEAR-TO-DATE		OPENING BALANCE		CHANGE IN QTY		CHANGE IN VALUE		
	QUANTITY (in tonnes or hl)	VALUE (in Euro)	QUANTITY (in tonnes or hl)	VALUE (in Euro)	ABSOLUTE (in tonnes or hl)	%	ABSOLUTE (in Euro)	%	
	(a)	(b)	(c)	(d)	(e)=(a)-(c)	(f)=(e)/(c)*%	(g)=(b)-(d)	(h)=(g)/(d)*%	
Ble panifiable									
Orge									
Seigle									
Sorgho									
Mais									
TOTAL CEREALES									
RIZ									
Alcool Public									
Alcool Mixte									
TOT. ALCOOL (HL)									
LEP									
Beurre									
TOTAL L & B									
Sucre Blanc									
Sucre Brut									
TOTAL SUCRE									
Bov. carc.									
Bov. des.									
Eq. carc.									
TOTAL EQ. CARC.									
GRAND TOTAL									

