

CHOOSE COUNTRY

EU TOTAL	YEAR-TO-DATE		OPENING BALANCE ⁽¹⁾		CHANGE IN QTY		CHANGE IN VALUE	
	QUANTITY (tn or hl)	VALUE (in Euro)	QUANTITY (tn or hl)	VALUE (in Euro)	ABSOLUTE (tn or hl)	%	ABSOLUTE (in Euro)	%
CLICK TOTALS FOR GRAPHICS	(a)	(b)	(c)	(d)	(e)=(a)-(c)	(f)=(e)/(c)*%	(g)=(b)-(d)	(h)=(g)/(d)*%
Blé panifiable								
Orge	6.019	609.813	9.003	912.073	-2.984	-33%	-302.260	-33%
Seigle								
Sorgho								
Mais								
TOTAL CEREALES	6.019	609.813	9.003	912.073	-2.984	-33%	-302.260	-33%
TOTAL RIZ								
Alcool Public								
Alcool Mixte								
TOTAL ALCOOL (HL 100%)								
LEP								
Beurre								
TOTAL LAIT ET BEURRE								
Sucre Blanc								
Sucre Brut								
TOTAL SUCRE								
Bov. carc.								
Bov. des.								
Eq. carc.								
TOTAL EQ. CARCASSES								
GRAND TOTAL		609.813		912.073			-302.260	-33%

SOURCE : The declarations of the Member States before controls.

(1) Period 13/2012

quantities are expressed in
tonnes (alcohol in hl 100%)

ACCOUNTING VALUE OF THE PUBLIC INTERVENTION STOCKS AS AT :
(BEFORE THE COMPLEMENTARY DEPRECIATION)

30-abr-13

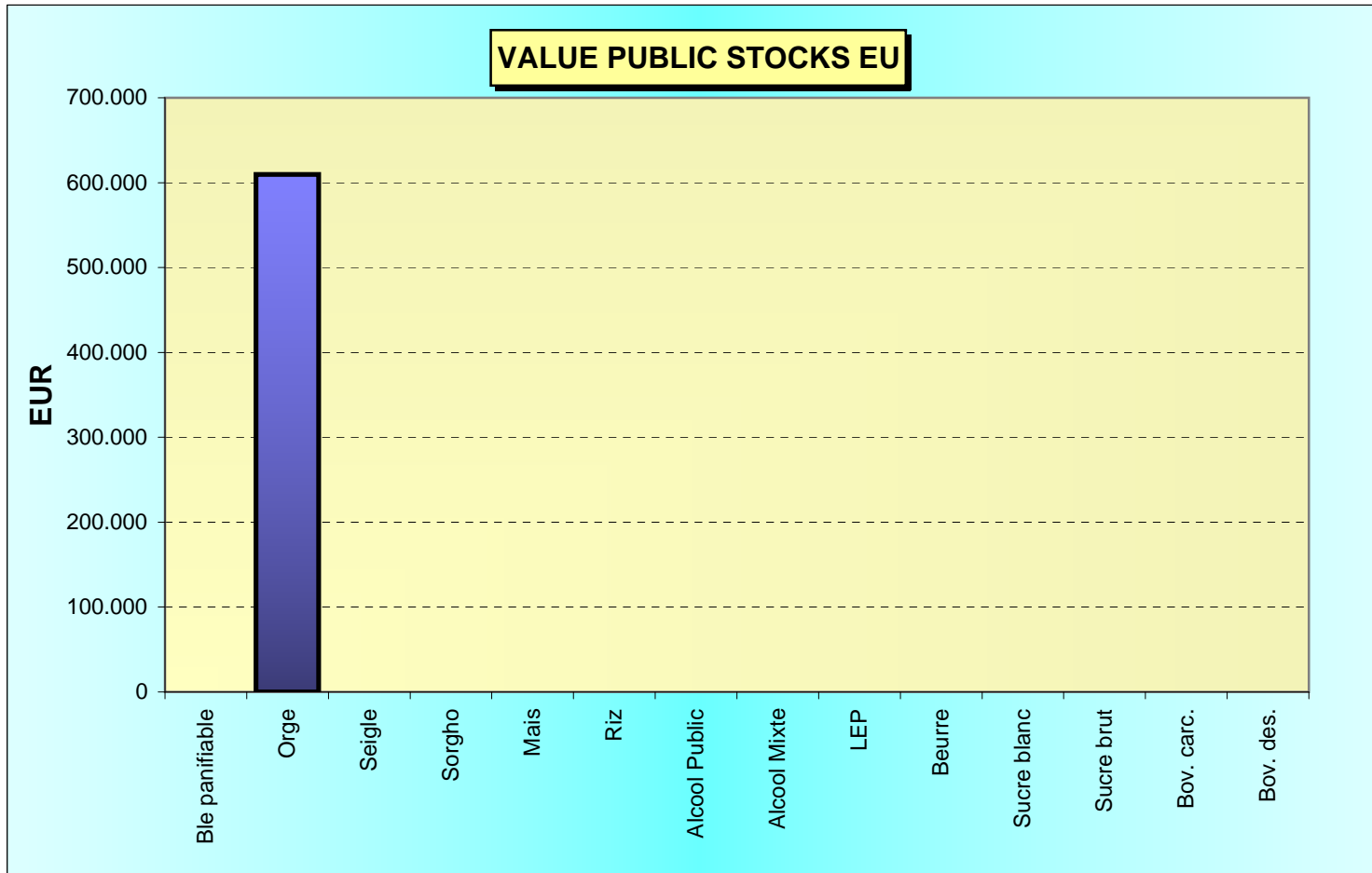
AGRI I.4

G. MERTENS tel. 65910

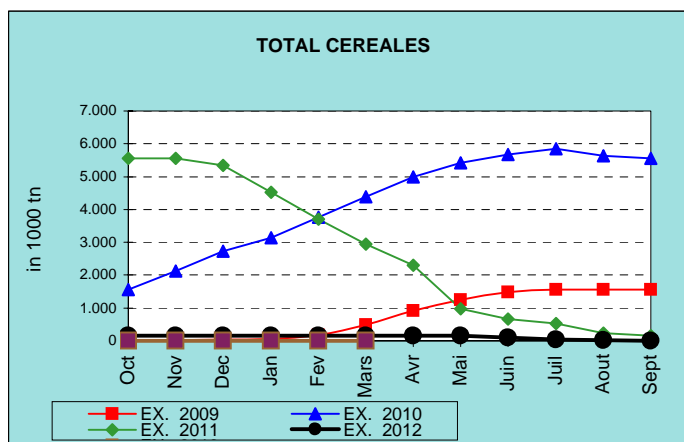
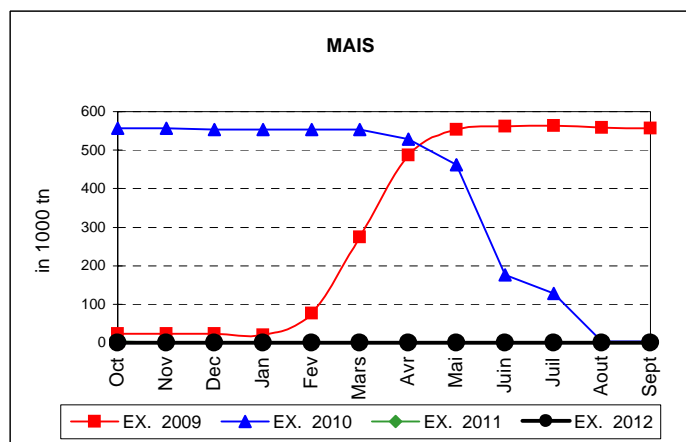
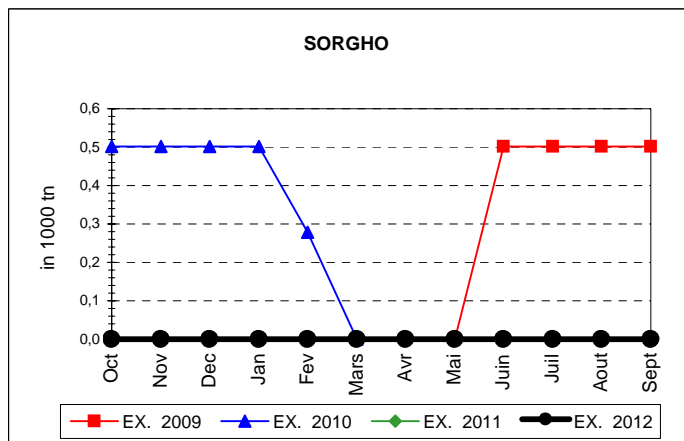
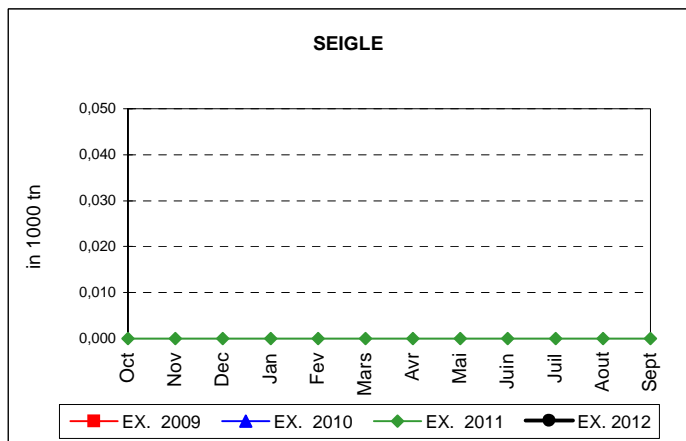
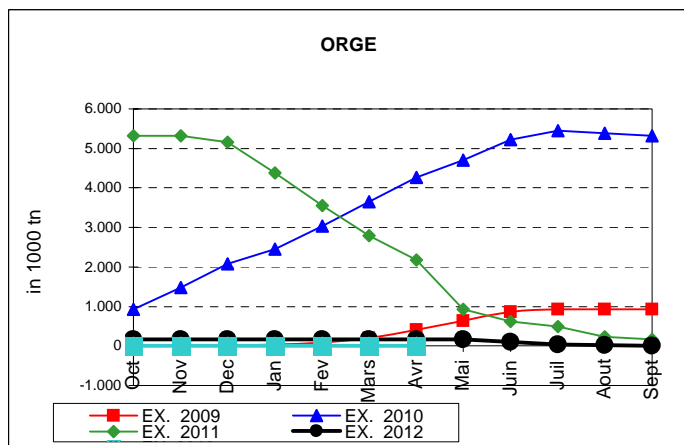
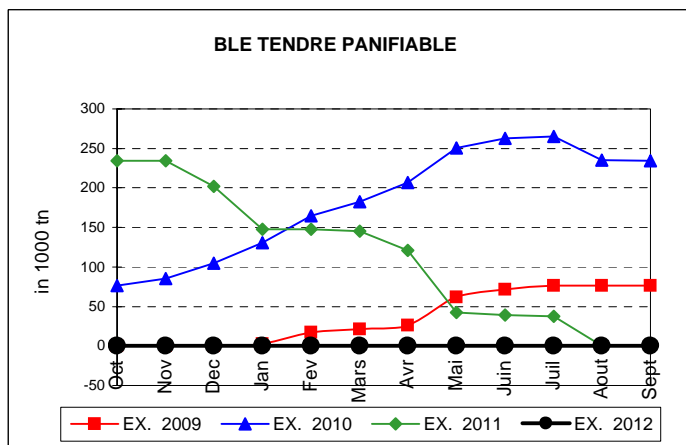
Produits		BE	BG	CZ	DK	DE	EE	IE	EL	ES	FR	IT	CY	LV	LT	LU	HU	MT	NL	OS	PL	PO	RO	SI	SK	FIN	SE	UK	TOTAL	
BLE PANIF	quant.																													
	valeur																													
ORGE	quant.																										6.019			
	valeur																										609.813			
SEIGLE	quant.																													
	valeur																													
SORGHO	quant.																													
	valeur																													
MAIS	quant.																													
	valeur																													
TOT.CER	quant.																										6.019			
	valeur																													
RIZ	quant.																													
	valeur																													
ALC.P.	quant.																													
	valeur																													
ALC.M.	quant.																													
	valeur																													
TOT.ALC.	quant.																													
	valeur																													
LEP	quant.																													
	valeur																													
BEURRE	quant.																													
	valeur																													
TOT L&B	quant.																													
	valeur																													
S. BLANC	quant.																													
	valeur																													
S. BRUT	quant.																													
	valeur																													
TOT. SUC	quant.																													
	valeur																													
BOV.QUA	quant.																													
	valeur																													
BOV.DES	quant.																													
	valeur																													
EQ. CARC	quant.																													
	valeur																													
TOT EQ	quant.																													
	valeur																													
EU TOTAL	valeur																											609.813	609.813	

30-abr-13

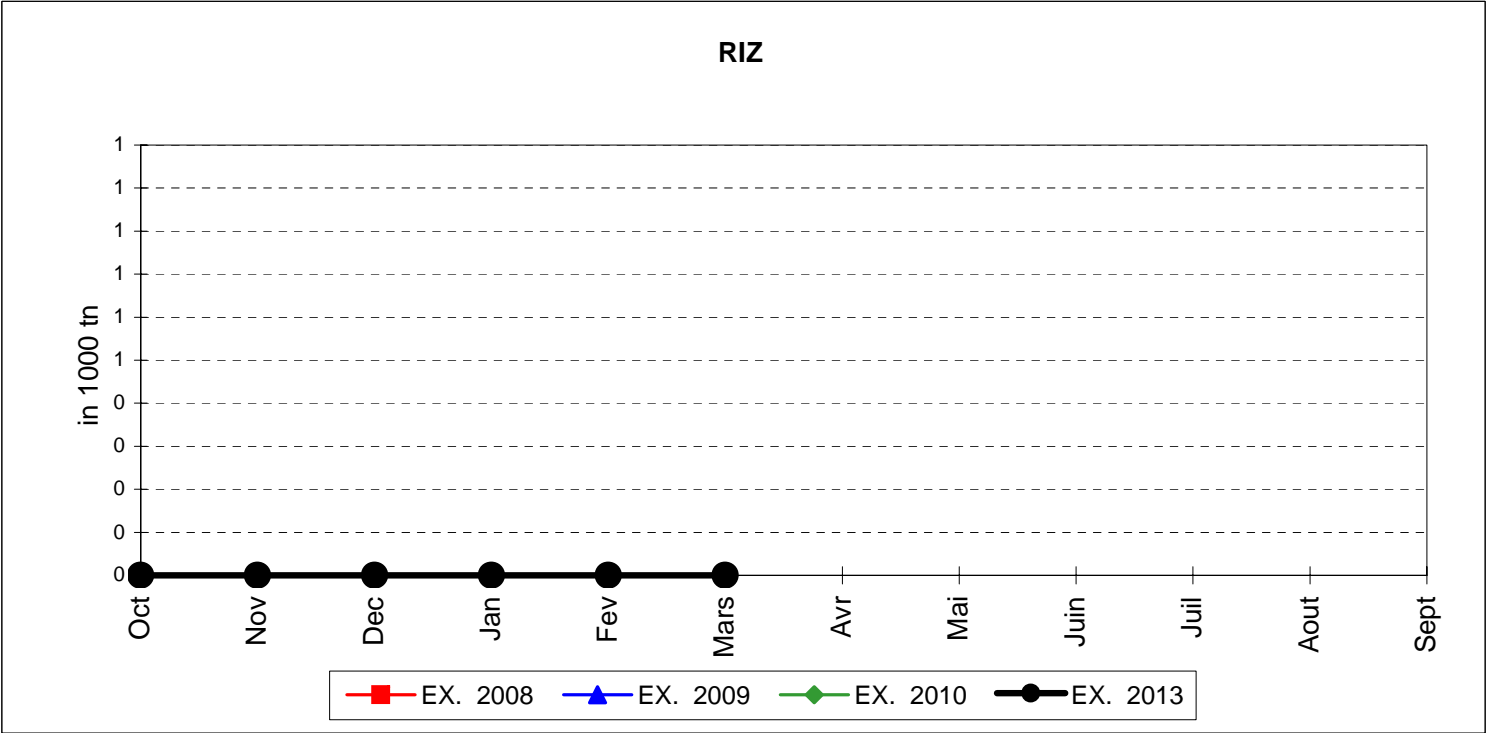
PUBLIC INTERVENTION STOCKS



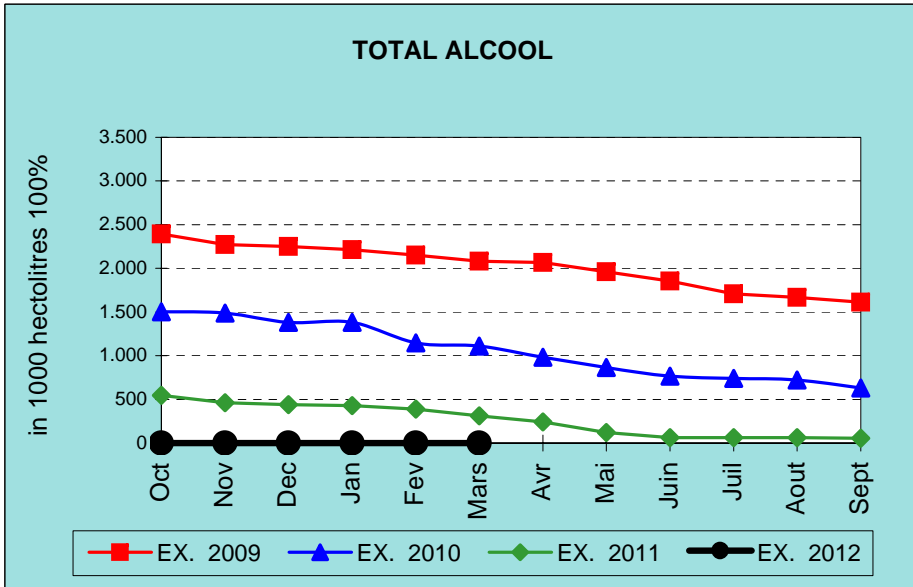
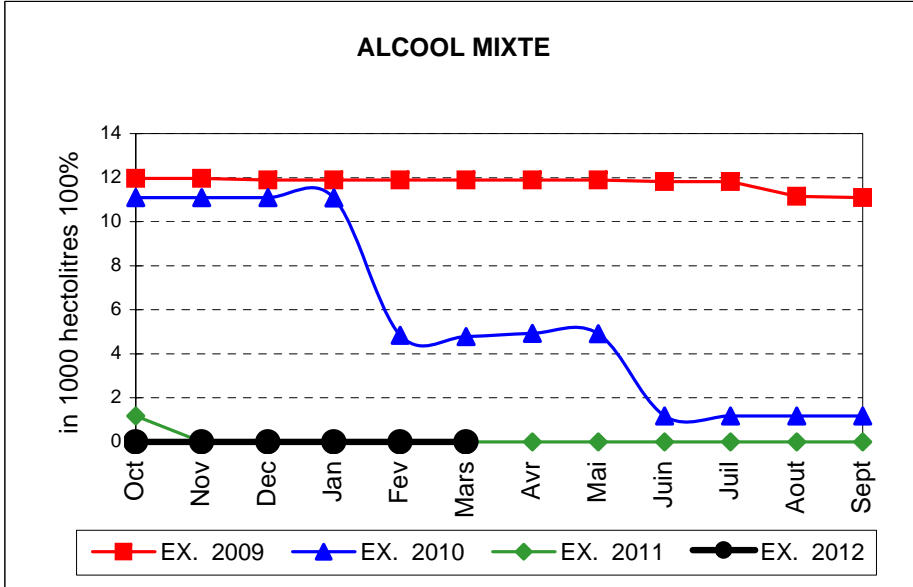
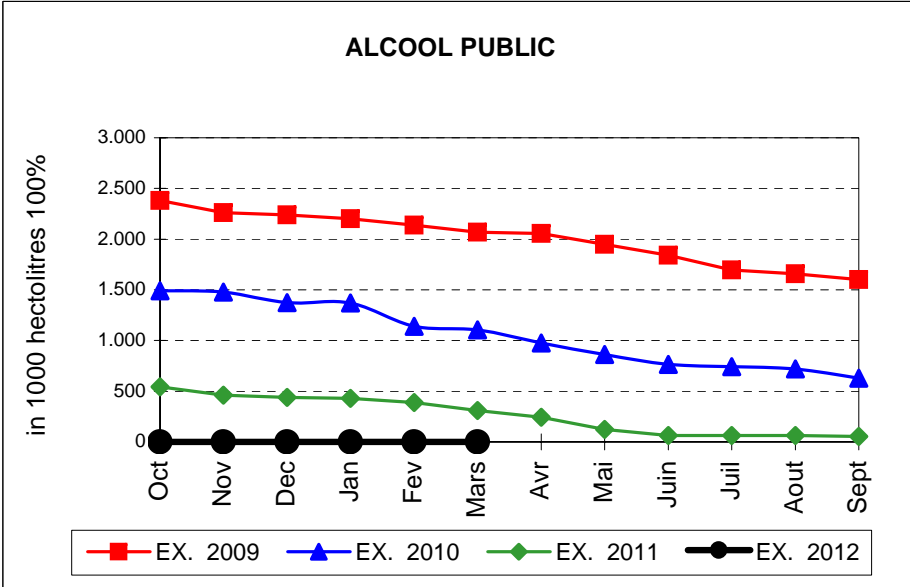
EVOLUTION IN QUANTITIES OF PUBLIC INTERVENTION STOCKS



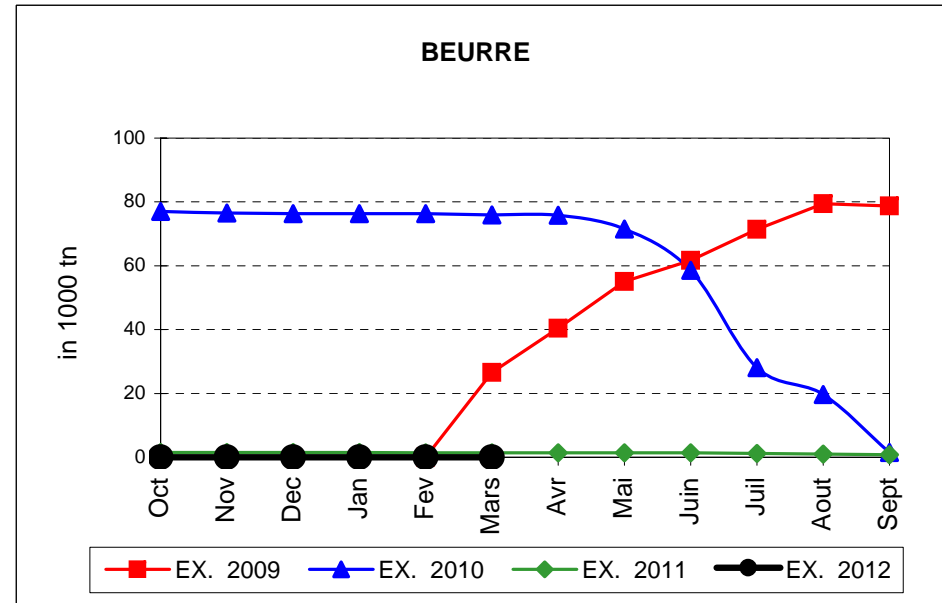
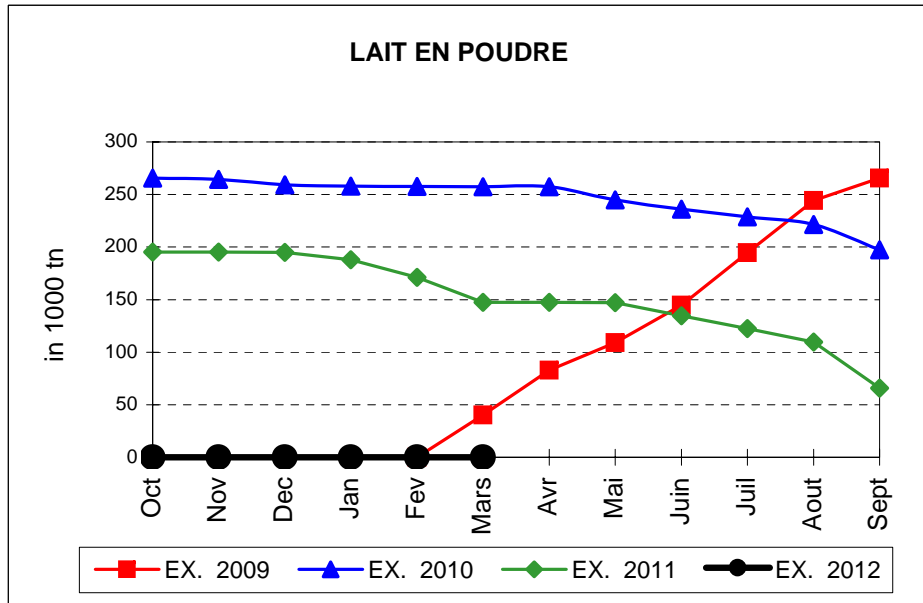
EVOLUTION IN QUANTITIES OF PUBLIC INTERVENTION STOCKS



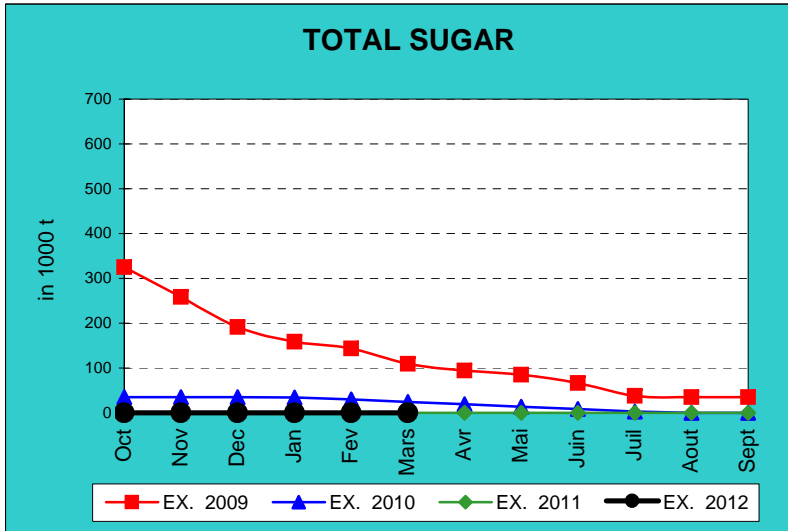
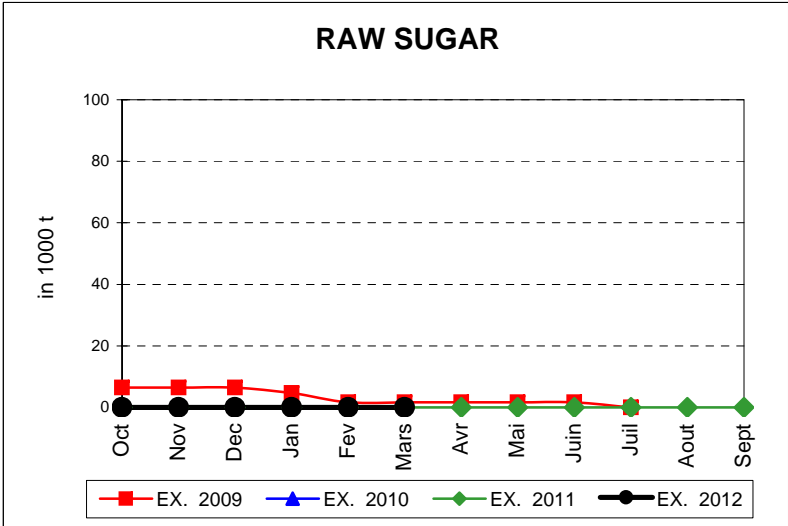
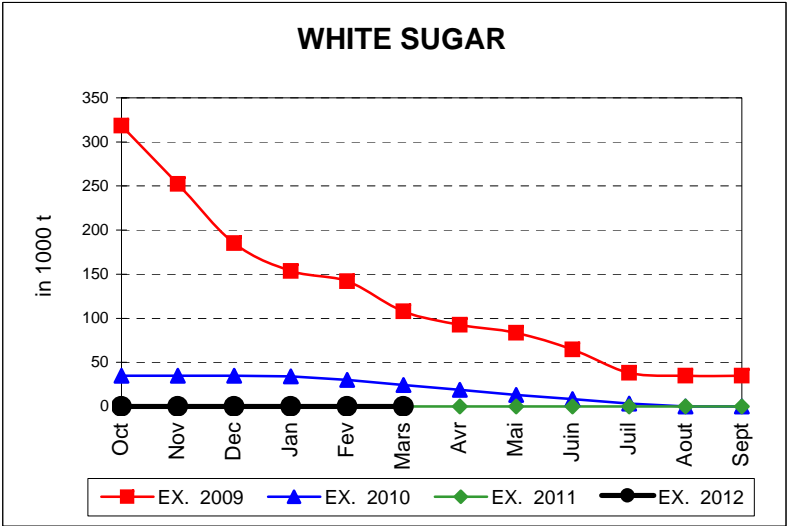
EVOLUTION IN QUANTITIES OF PUBLIC INTERVENTION STOCKS



EVOLUTION IN QUANTITIES OF PUBLIC INTERVENTION STOCKS

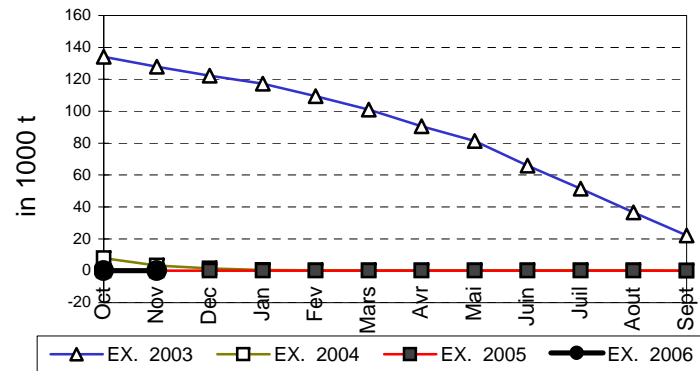


EVOLUTION IN QUANTITIES OF PUBLIC INTERVENTION STOCKS

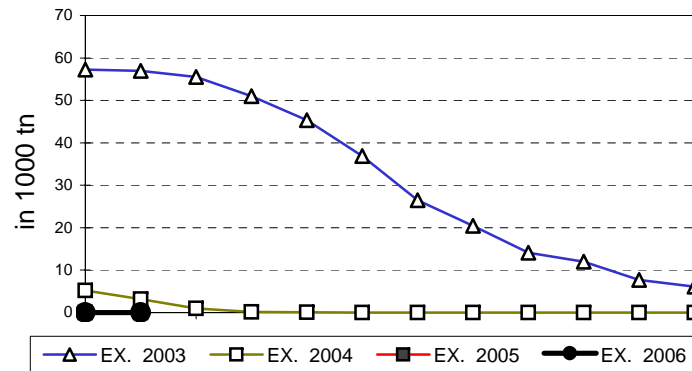


EVOLUTION IN QUANTITIES OF PUBLIC INTERVENTION STOCKS

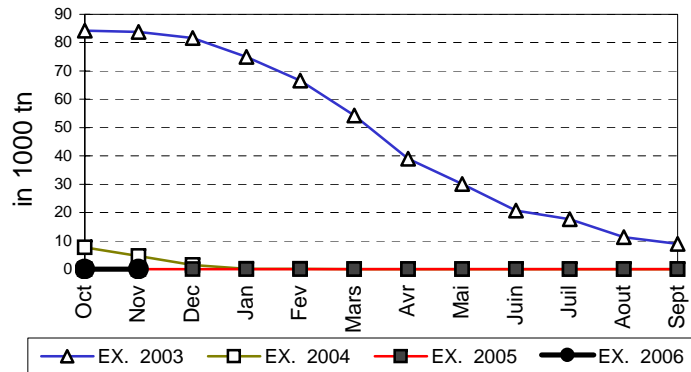
VIANDE BOVINE CARCASSES



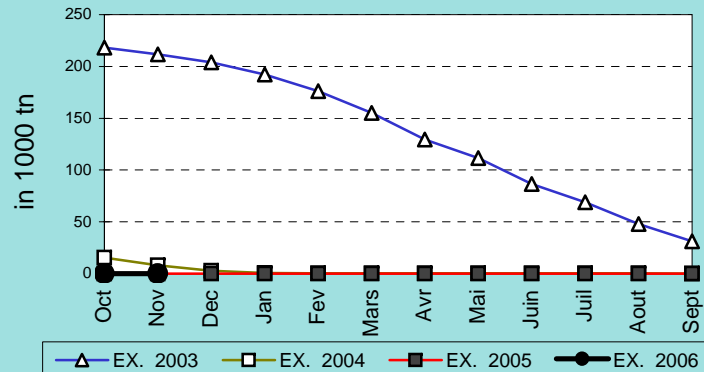
VIANDE BOVINE DESOSSEE



VIANDE DESOSSEE EN EQUIVALENT CARCASSES



TOTAL VIANDE EN EQUIVALENT CARCASSES



COMPARED WITH PREVIOUS MONTH

EU TOTAL	30-abr-13		31-mar-13		CHANGE IN QTY		CHANGE IN VALUE	
	QUANTITY (tn or hl)	VALUE (in Euro)	QUANTITY (tn or hl)	VALUE (In Euro)	ABSOLUTE (tn or hl)	%	ABSOLUTE (in Euro)	%
CLICK TOTALS FOR GRAPHICS	(a)	(b)	(c)	(d)	(e)=(a)-(c)	(f)=(e)/(c)*%	(g)=(b)-(d)	(h)=(g)/(d)*%
Blé panifiable								
Orge	6.019	609.813	9.003	912.073	-2.984	-33%	-302.260	-33%
Seigle								
Sorgho								
Mais								
TOTAL CEREALES	6.019	609.813	9.003	912.073	-2.984	-33%	-302.260	-33%
TOTAL RIZ								
Alcool Public								
Alcool Mixte								
TOTAL ALCOOL (HL 100%)								
LEP								
Beurre								
TOTAL LAIT ET BEURRE								
Sucre blanc								
Sucre brut								
TOTAL SUCRE								
Bov. carc.								
Bov. des.								
Eq. carc.								
TOTAL EQ. CARCASSES								
GRAND TOTAL		609.813		912.073			-302.260	-33%

SOURCE : The declarations of the Member States before controls.

COMPARED WITH PREVIOUS YEAR

EU TOTAL	30-abr-13		30-abr-12		CHANGE IN QTY		CHANGE IN VALUE	
	QUANTITY (tn or hl)	VALUE (in Euro)	QUANTITY (tn or hl)	VALUE (In Euro)	ABSOLUTE (tn or hl)	%	ABSOLUTE (in Euro)	%
CLICK TOTALS FOR GRAPHICS	(a)	(b)	(c)	(d)	(e)=(a)-(c)	(f)=(e)/(c)*%	(g)=(b)-(d)	(h)=(g)/(d)*%
Blé panifiable								
Orge	6.019	609.813	162.104	16.397.398	-156.085	-96%	-15.787.584	-96%
Seigle								
Sorgho								
Mais								
TOTAL CEREALES	6.019	609.813	162.104	16.397.398	-156.085	-96%	-15.787.584	-96%
TOTAL RIZ								
Alcool Public			2.791	78.263	-2.791	-100%	-78.263	-100%
Alcool Mixte								
TOTAL ALCOOL (HL 100%)			2.791	78.263	-2.791	-100%	-78.263	-100%
LEP			2.993	4.421.689	-2.993	-100%	-4.421.689	-100%
Beurre			1	2.922	-1	-100%	-2.922	-100%
TOTAL LAIT ET BEURRE			2.994	4.424.611	-2.994	-100%	-4.424.611	-100%
Sucre blanc								
Sucre brut								
TOTAL SUCRE								
Bov. carc.								
Bov. des.								
Eq. carc.								
TOTAL EQ. CARCASSES								
GRAND TOTAL		609.813		20.900.273			-20.290.459	-97%

SOURCE :

The declarations of the Member States before controls.

THE PUBLIC STORAGE FLASH REPORT AS AT										30-abr-13	
ESPAÑA											
PRODUCTS	YEAR-TO-DATE				OPENING BALANCE		CHANGE IN QTY		CHANGE IN VALUE		
	QUANTITY	(in VALUE	(in	QUANTITY	VALUE	ABSOLUTE	%	ABSOLUTE	%		
	(in tonnes or hl)	(in Euro)	(in	(in tonnes or hl)	(In Euro)	(in tonnes or hl)	(f)=(e)/(c)*%	(in Euro)	(h)=(g)/(d)*%		
	(a)	(b)	(c)	(d)	(e)=(a)-(c)	(f)=(e)/(c)*%	(g)=(b)-(d)	(h)=(g)/(d)*%			
Ble panifiable											
Orge											
Seigle											
Sorgho											
Mais											
TOTAL CEREALES											
RIZ											
Alcool Public											
Alcool Mixte											
TOT. ALCOOL (HL)											
LEP											
Beurre											
TOTAL L & B											
Sucre Blanc											
Sucre Brut											
TOTAL SUCRE											
Bov. carc.											
Bov. des.											
Eq. carc.											
TOTAL EQ. CARC.											
GRAND TOTAL											

30-abr-13

