

CHOOSE COUNTRY

EU TOTAL	YEAR-TO-DATE		OPENING BALANCE (1)		CHANGE IN QTY		CHANGE IN VALUE	
	QUANTITY (tn or hl)	VALUE (in Euro)	QUANTITY (tn or hl)	VALUE (In Euro)	ABSOLUTE (tn or hl)	%	ABSOLUTE (in Euro)	%
CLICK TOTALS FOR GRAPHICS	(a)	(b)	(c)	(d)	(e)=(a)-(c)	(f)=(e)/(c)*%	(g)=(b)-(d)	(h)=(g)/(d)*%
Blé panifiable	61.478	6.781.346	37	3.302	61.441	167368%	6.778.044	205267%
Orge	634.068	67.698.523			634.068		67.698.523	
Seigle								
Sorgho								
Mais	553.522	57.069.679	47.207	4.635.238	506.315	1073%	52.434.441	1131%
TOTAL CEREALES	1.249.068	131.549.548	47.244	4.638.540	1.201.824	2544%	126.911.008	2736%
TOTAL RIZ								
Alcool Public	1.949.911	83.282.790	2.484.895	104.449.771	-534.984	-22%	-21.166.981	-20%
Alcool Mixte	11.894	184.533	11.894	184.533	0	0%	1	0%
TOTAL ALCOOL (HL 100%)	1.961.805	83.467.323	2.496.789	104.634.304	-534.984	-21%	-21.166.981	-20%
LEP	108.990	185.323.935			108.990		185.323.935	
Beurre	55.115	121.357.689			55.115		121.357.689	
TOTAL LAIT ET BEURRE	164.104	306.681.624			164.104		306.681.624	
Sucre Blanc	83.376	27.401.737	325.254	108.760.191	-241.878	-74%	-81.358.454	-75%
Sucre Brut	1.661	401.616	10.902	2.635.883	-9.241	-85%	-2.234.267	-85%
TOTAL SUCRE	85.037	27.803.352	336.156	111.396.074	-251.119	-75%	-83.592.721	-75%
Bov. carc.								
Bov. des.								
Eq. carc.								
TOTAL EQ. CARCASSES								
GRAND TOTAL		549.501.847		220.668.917			328.832.930	149%

SOURCE : The declarations of the Member States before controls.

(1) Period 13/2008 annual declaration

quantities are expressed in
tonnes (alcohol in hl 100%)

ACCOUNTING VALUE OF THE PUBLIC INTERVENTION STOCKS AS AT :
(BEFORE THE COMPLEMENTARY DEPRECIATION)

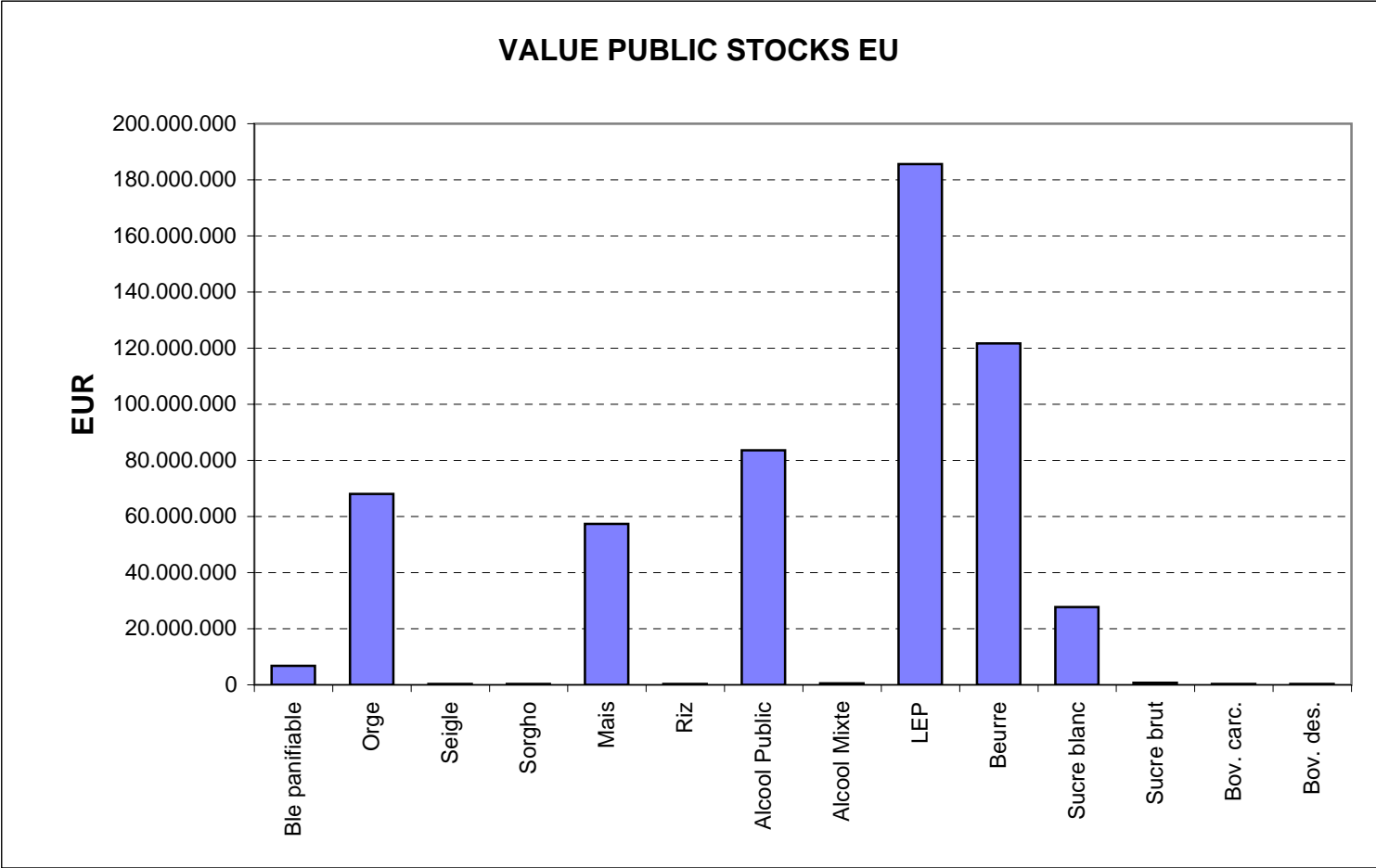
31-may-09

AGRI I.4

J. FLORET tel. 53236

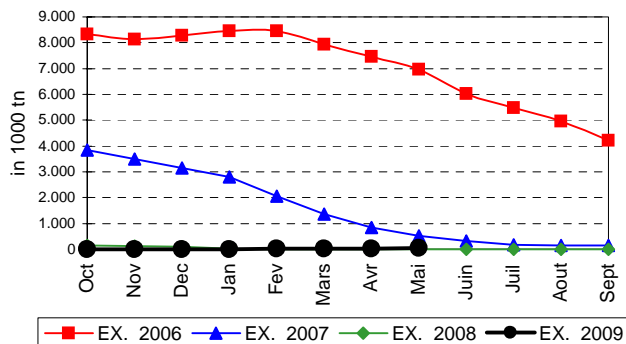
Produits		BE	BG	CZ	DK	DE	EE	IE	EL	ES	FR	IT	CY	LV	LT	LU	HU	MT	NL	OS	PL	PO	RO	SI	SK	FIN	SE	UK	TOTAL
BLE PANIF	quant.		3.013	31.984													25.107				250				802	321			61.478
	valeur		310.798	3.698.653														2.629.997				25.328				83.090	33.481		
ORGE	quant.			129.168		104.895	5.000								60.805		119.975			6.852	48.793				7.411	131.377	19.790		634.068
	valeur			15.058.380		10.859.779	525.140								6.299.435		12.651.399				711.698	5.056.940				769.074	13.701.357	2.065.322	
SEIGLE	quant.																												
	valeur																												
SORGHO	quant.																												
	valeur																												
MAIS	quant.																443.898								109.624				553.522
	valeur																45.712.629								11.357.051				57.069.679
TOT.CER	quant.		3.013	161.152		104.895	5.000								60.805		588.981			6.852	49.043				117.837	131.698	19.790		1.249.068
RIZ	quant.																												
	valeur																												
ALC.P.	quant.								60.366	701.681	424.622	627.257	7.285				55.312					73.388							1.949.911
	valeur								2.584.868	29.681.111	17.821.398	26.921.852	332.865				2.346.887					3.593.809							83.282.790
ALC.M.	quant.										1.789	10.105																	11.894
	valeur										7.084	177.449																	184.533
TOT.ALC.	quant.								60.366	701.681	426.411	637.362	7.285				55.312					73.388							1.961.805
LEP	quant.	12.417		2.780		41.773	1.302	12.569		490					3.781				11.960		6.934	1.084				969	3.647	9.285	108.990
	valeur	21.056.455		5.275.830		70.929.790	2.193.655	21.277.633		823.200					6.362.929					20.263.145		11.698.472	1.840.759				1.643.870	6.192.266	15.765.930
BEURRE	quant.	3.256		452		8.933	838	12.339		7.376					787				11.733		1.995	2.843						4.563	55.115
	valeur	7.135.524		1.092.617		19.646.086	1.811.717	27.141.469		16.152.629					1.725.680					25.955.392		4.377.170	6.200.953					10.118.453	121.357.689
TOT L&B	quant.	15.673		3.232		50.705	2.140	24.908		7.866					4.568				23.693		8.928	3.927				969	3.647	13.848	164.104
S. BLANC	quant.	3.095		2.138				12.000				46.143													20.000				83.376
	valeur	905.091		720.950				3.491.160				15.540.535													6.744.000				27.401.737
S. BRUT	quant.																										1.661		1.661
	valeur																										401.616		401.616
TOT. SUC	quant.	3.095		2.138				12.000				46.143													20.000		1.661		85.037
BOV.QUA	quant.																												
	valeur																												
BOV.DES	quant.																												
	valeur																												
EQ. CARC	quant.																												
	valeur																												
TOT EQ	quant.																												
EU TOTAL	valeur	29.097.070	310.798	25.846.430		101.435.654	4.530.513	51.910.262	2.584.868	46.656.940	17.828.482	42.639.836	332.865	14.388.044		63.340.911		46.218.537	711.698	21.157.909	11.635.521				18.953.214	15.378.708	8.659.204	25.884.383	549.501.847

PUBLIC INTERVENTION STOCKS

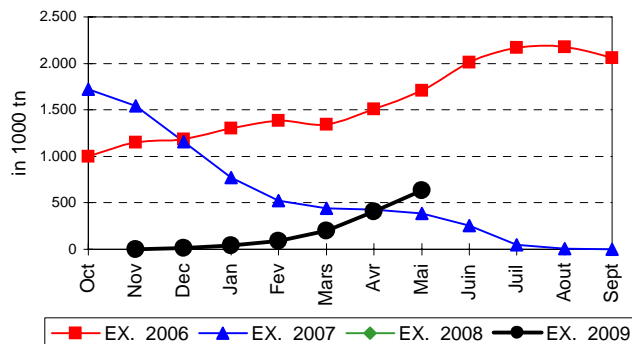


EVOLUTION IN QUANTITIES OF PUBLIC INTERVENTION STOCKS

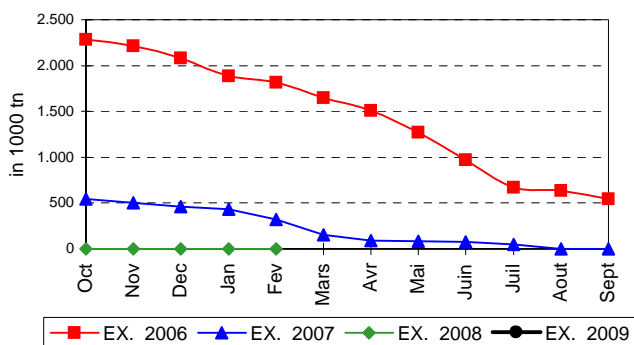
BLE TENDRE PANIFIABLE



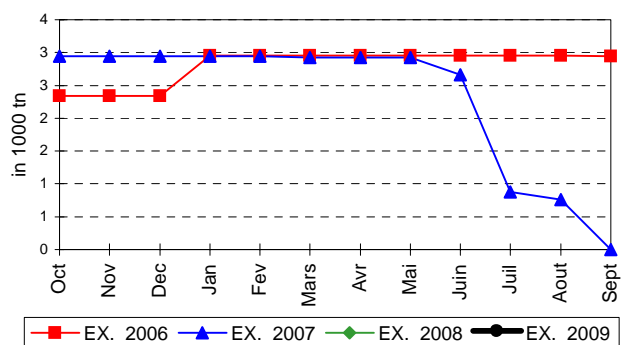
ORGE



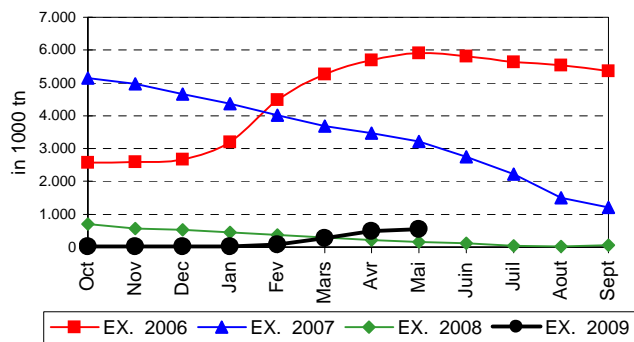
SEIGLE



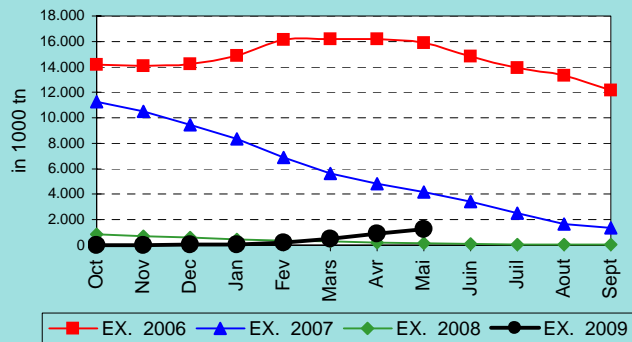
SORGHO



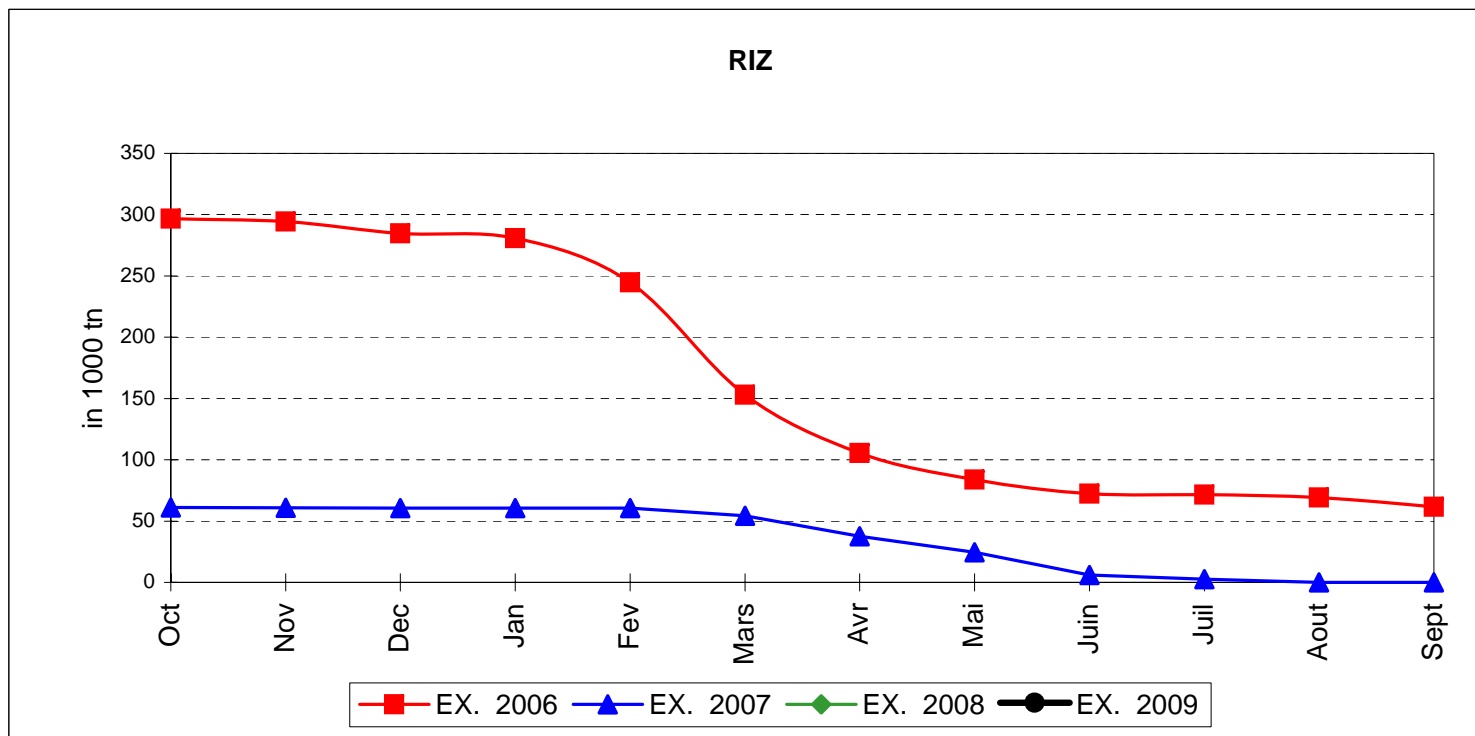
MAIS



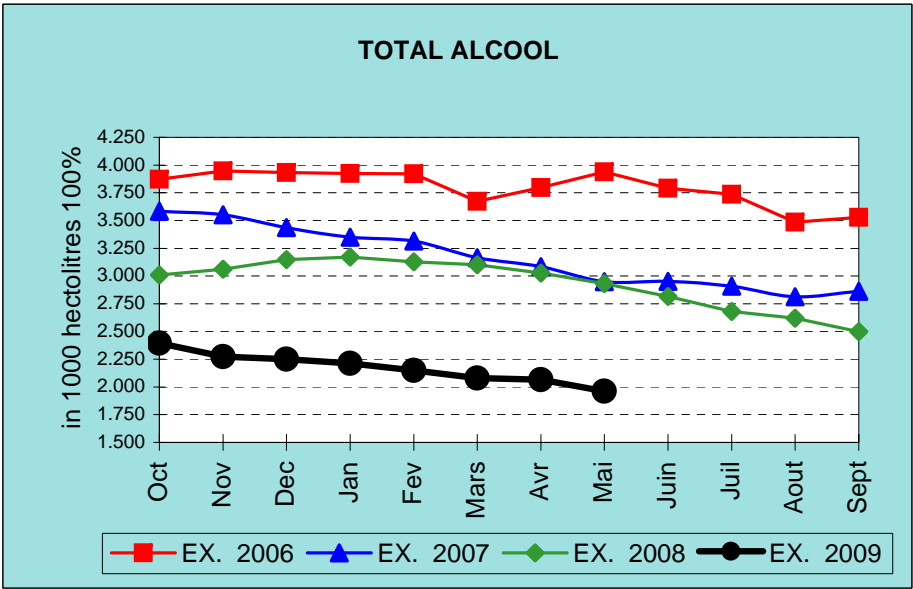
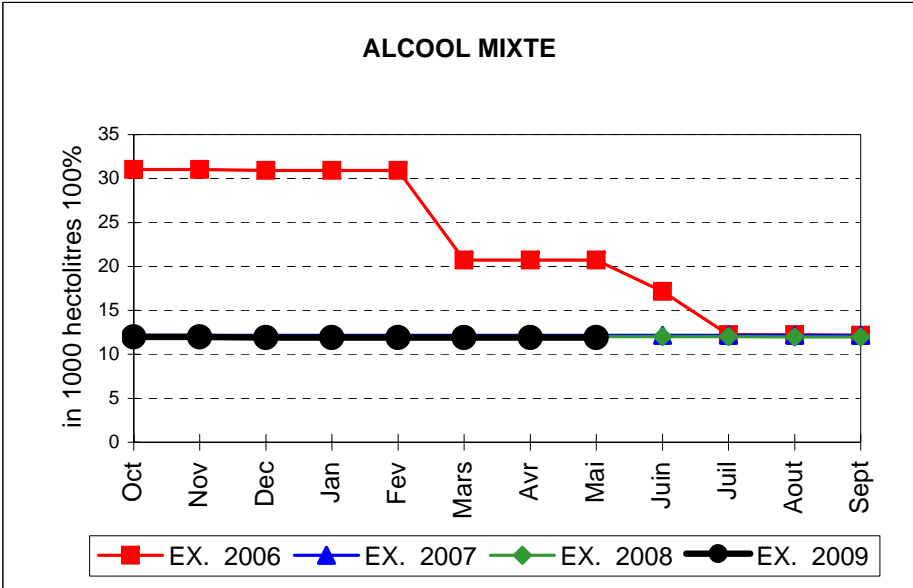
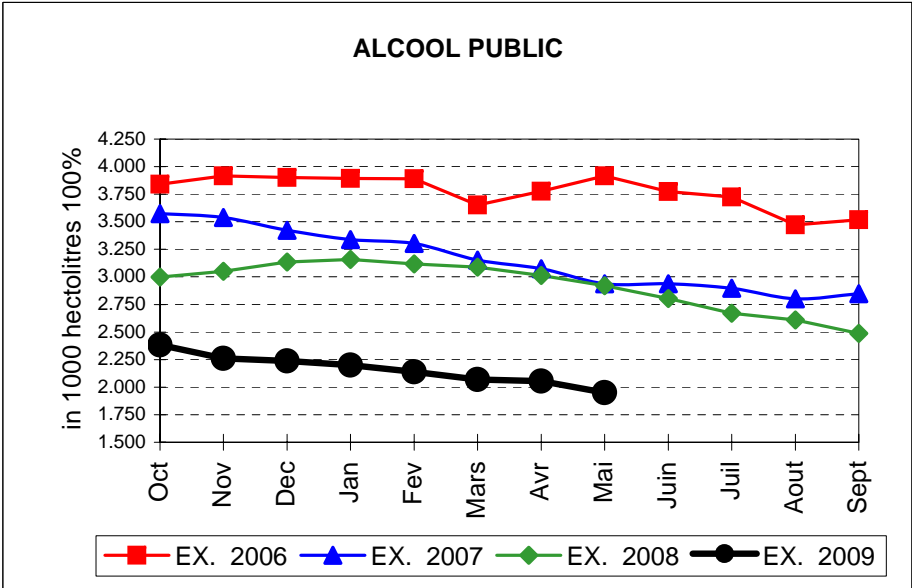
TOTAL CEREALES



EVOLUTION IN QUANTITIES OF PUBLIC INTERVENTION STOCKS

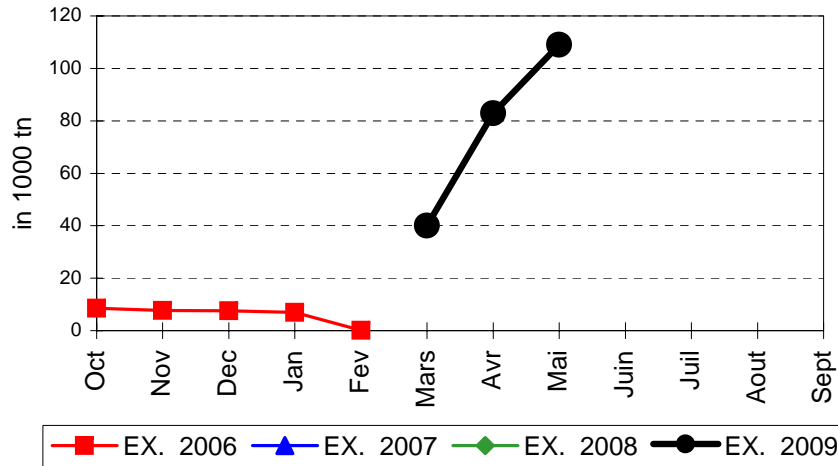


EVOLUTION IN QUANTITIES OF PUBLIC INTERVENTION STOCKS

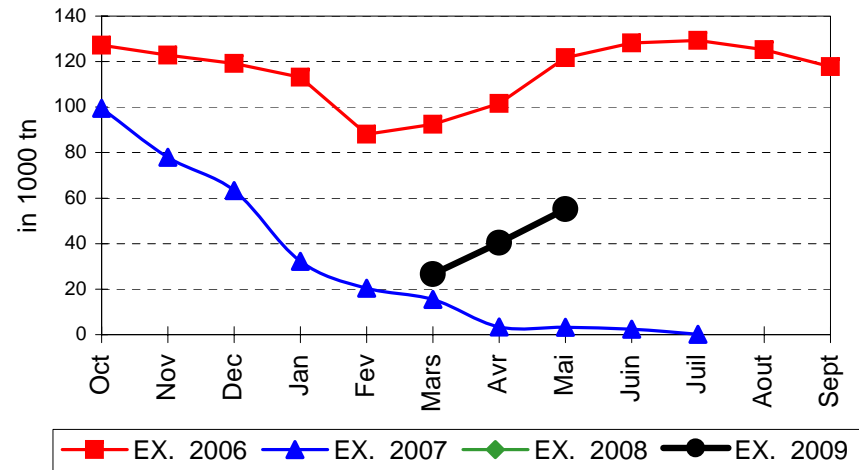


EVOLUTION IN QUANTITIES OF PUBLIC INTERVENTION STOCKS

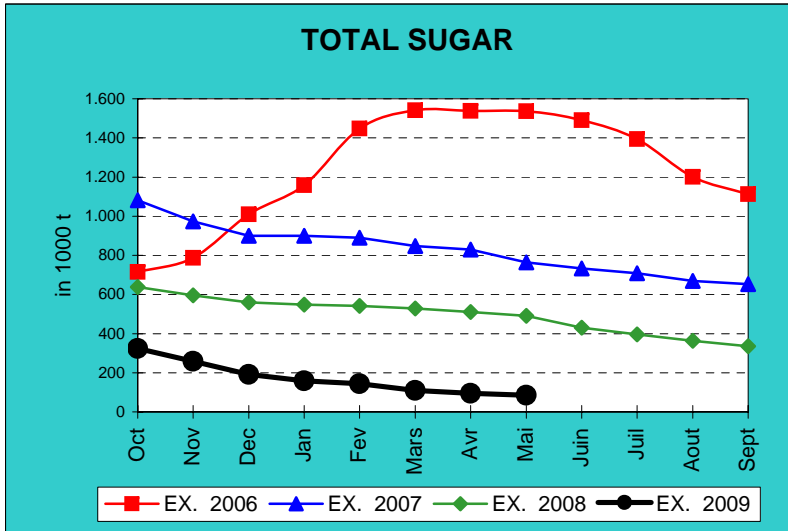
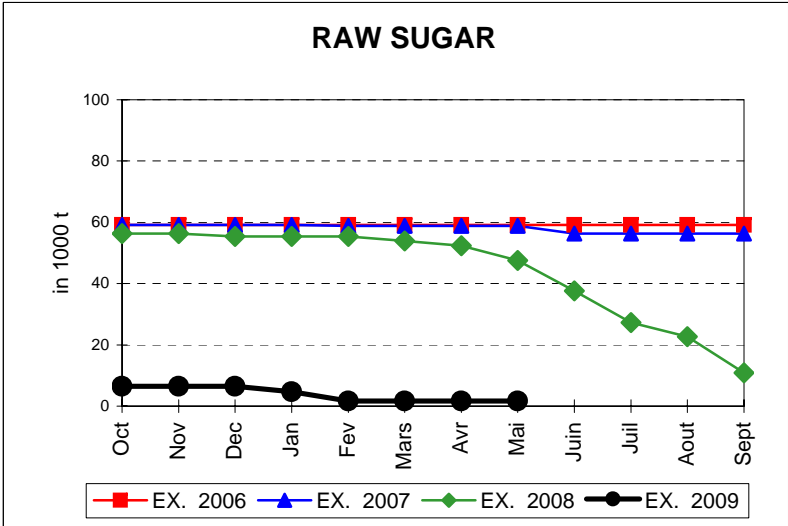
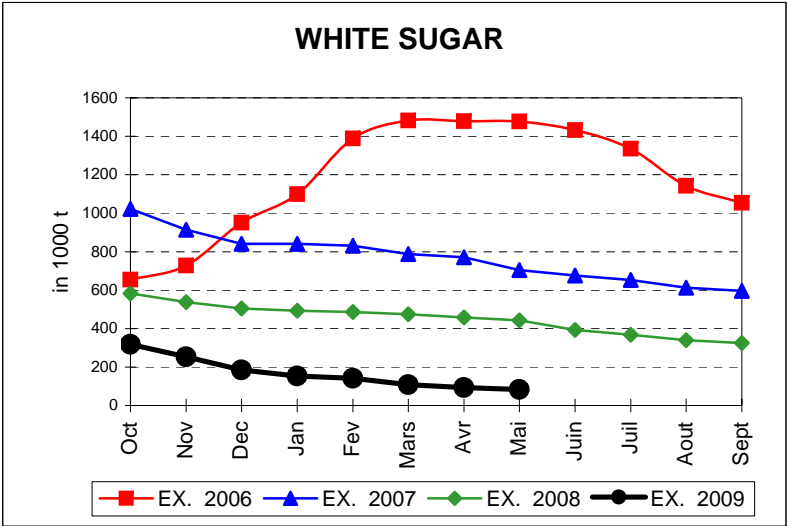
LAIT EN POUDRE



BEURRE

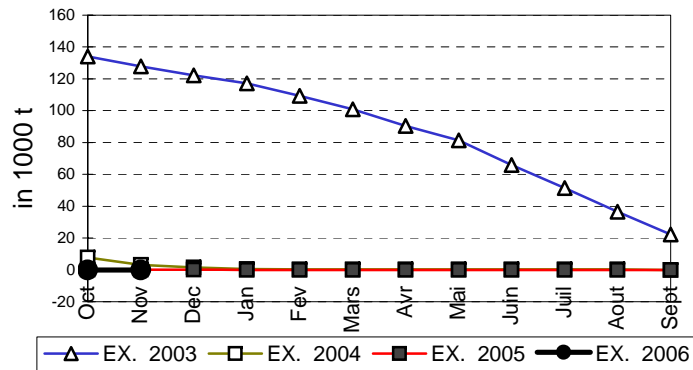


EVOLUTION IN QUANTITIES OF PUBLIC INTERVENTION STOCKS

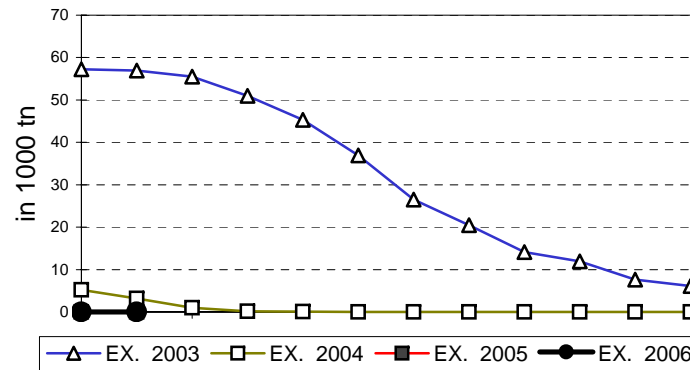


EVOLUTION IN QUANTITIES OF PUBLIC INTERVENTION STOCKS

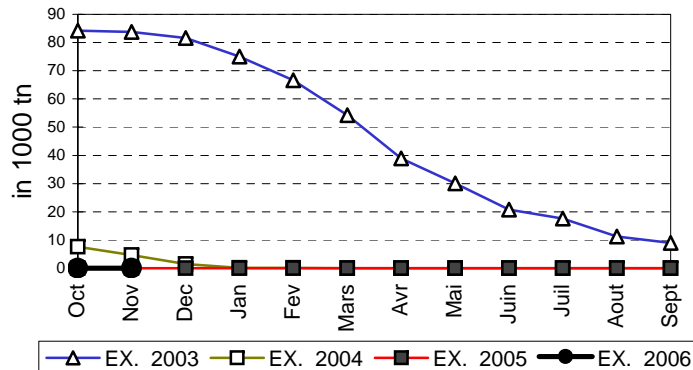
VIANDE BOVINE CARCASSES



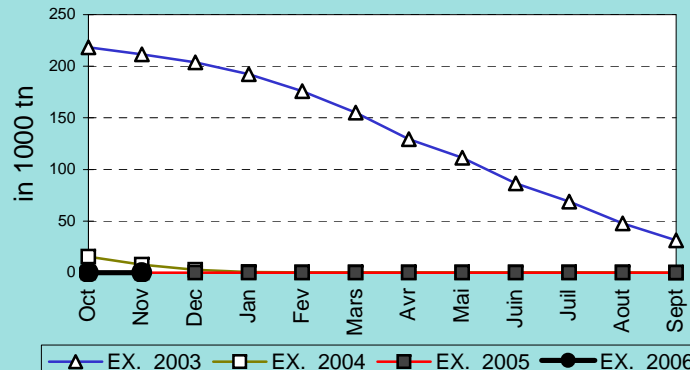
VIANDE BOVINE DESOSSEE



VIANDE DESOSSEE EN EQUIVALENT CARCASSES



TOTAL VIANDE EN EQUIVALENT CARCASSES



COMPARED WITH PREVIOUS MONTH

EU TOTAL	31-may-09		30-abr-09		CHANGE IN QTY		CHANGE IN VALUE	
	QUANTITY (tn or hl)	VALUE (in Euro)	QUANTITY (tn or hl)	VALUE (In Euro)	ABSOLUTE (tn or hl)	%	ABSOLUTE (in Euro)	%
CLICK TOTALS FOR GRAPHICS	(a)	(b)	(c)	(d)	(e)=(a)-(c)	(f)=(e)/(c)*%	(g)=(b)-(d)	(h)=(g)/(d)*%
Blé panifiable	61.478	6.781.346	26.498	2.968.592	34.980	132%	3.812.754	128%
Orge	634.068	67.698.523	407.512	43.343.361	226.556	56%	24.355.163	56%
Seigle								
Sorgho								
Mais	553.522	57.069.679	486.372	50.076.981	67.150	14%	6.992.698	14%
TOTAL CEREALES	1.249.068	131.549.548	920.382	96.388.934	328.686	36%	35.160.615	36%
TOTAL RIZ								
Alcool Public	1.949.911	83.282.790	2.054.600	87.707.409	-104.689	-5%	-4.424.619	-5%
Alcool Mixte	11.894	184.533	11.894	184.533				
TOTAL ALCOOL (HL 100%)	1.961.805	83.467.323	2.066.494	87.891.942	-104.689	-5%	-4.424.619	-5%
LEP	108.990	185.323.935	82.916	141.206.443	26.073	31%	44.117.492	31%
Beurre	55.115	121.357.689	40.452	89.143.841	14.663	36%	32.213.848	36%
TOTAL LAIT ET BEURRE	164.104	306.681.624	123.368	230.350.284	40.736	33%	76.331.340	33%
Sucre blanc	83.376	27.401.737	92.541	30.503.285	-9.165	-10%	-3.101.549	-10%
Sucre brut	1.661	401.616	1.661	401.616				
TOTAL SUCRE	85.037	27.803.352	94.202	30.904.901	-9.165	-10%	-3.101.549	-10%
Bov. carc.								
Bov. des.								
Eq. carc.								
TOTAL EQ. CARCASSES								
GRAND TOTAL		549.501.847		445.536.061			103.965.786	23%

SOURCE : The declarations of the Member States before controls.

COMPARED WITH PREVIOUS YEAR

EU TOTAL	31-may-09		31-may-08		CHANGE IN QTY		CHANGE IN VALUE	
	QUANTITY (tn or hl)	VALUE (in Euro)	QUANTITY (tn or hl)	VALUE (In Euro)	ABSOLUTE (tn or hl)	%	ABSOLUTE (in Euro)	%
CLICK TOTALS FOR GRAPHICS	(a)	(b)	(c)	(d)	(e)=(a)-(c)	(f)=(e)/(c)*%	(g)=(b)-(d)	(h)=(g)/(d)*%
Blé panifiable	61.478	6.781.346	610	60.298	60.867	9971%	6.721.048	11146%
Orge	634.068	67.698.523			634.068		67.698.523	
Seigle								
Sorgho								
Mais	553.522	57.069.679	152.353	14.959.581	401.169	263%	42.110.098	281%
TOTAL CEREALES	1.249.068	131.549.548	152.964	15.019.879	1.096.104	717%	116.529.669	776%
TOTAL RIZ								
Alcool Public	1.949.911	83.282.790	2.920.318	139.652.234	-970.407	-33%	-56.369.445	-40%
Alcool Mixte	11.894	184.533	12.015	186.670	-121	-1%	-2.136	-1%
TOTAL ALCOOL (HL 100%)	1.961.805	83.467.323	2.932.333	139.838.904	-970.528	-33%	-56.371.581	-40%
LEP	108.990	185.323.935			108.990		185.323.935	
Beurre	55.115	121.357.689			55.115		121.357.689	
TOTAL LAIT ET BEURRE	164.104	306.681.624			164.104		306.681.624	
Sucre blanc	83.376	27.401.737	443.329	161.090.102	-359.953	-81%	-133.688.366	-83%
Sucre brut	1.661	401.616	47.517	11.488.695	-45.856	-97%	-11.087.079	-97%
TOTAL SUCRE	85.037	27.803.352	490.846	172.578.797	-405.809	-83%	-144.775.445	-84%
Bov. carc.								
Bov. des.								
Eq. carc.								
TOTAL EQ. CARCASSES								
GRAND TOTAL		549.501.847		327.437.581			222.064.267	68%

SOURCE :

The declarations of the Member States before controls.

THE PUBLIC STORAGE FLASH REPORT AS AT						31-may-09			
ESPAÑA									
PRODUCTS	YEAR-TO-DATE		OPENING BALANCE		CHANGE IN QTY		CHANGE IN VALUE		
	QUANTITY (in tonnes or hl)	VALUE (in Euro)	QUANTITY (in tonnes or hl)	VALUE (in Euro)	ABSOLUTE (in tonnes or hl)	%	ABSOLUTE (in Euro)	%	
	(a)	(b)	(c)	(d)	(e)=(a)-(c)	(f)=(e)/(c)*%	(g)=(b)-(d)	(h)=(g)/(d)*%	
Ble panifiable									
Orge									
Seigle									
Sorgho									
Mais									
TOTAL CEREALES									
RIZ									
Alcool Public	701.681	29.681.111	820.230	34.532.971	-118.549	-14%	-4.851.860	-14%	
Alcool Mixte									
TOT. ALCOOL (HL)	701.681	29.681.111	820.230	34.532.971	-118.549	-14%	-4.851.860	-14%	
LEP	490	823.200			490		823.200		
Beurre	7.376	16.152.629			7.376		16.152.629		
TOTAL L & B	7.866	16.975.829			7.866		16.975.829		
Sucre Blanc									
Sucre Brut									
TOTAL SUCRE									
Bov. carc.									
Bov. des.									
Eq. carc.									
TOTAL EQ. CARC.									
GRAND TOTAL		46.656.940		34.532.971			12.123.969	35%	

