

CHOOSE COUNTRY

EU TOTAL	YEAR-TO-DATE		OPENING BALANCE (1)		CHANGE IN QTY		CHANGE IN VALUE	
	QUANTITY (tn or hl)	VALUE (in Euro)	QUANTITY (tn or hl)	VALUE (in Euro)	ABSOLUTE (tn or hl)	%	ABSOLUTE (in Euro)	%
CLICK TOTALS FOR GRAPHICS	(a)	(b)	(c)	(d)	(e)=(a)-(c)	(f)=(e)/(c)*%	(g)=(b)-(d)	(h)=(g)/(d)*%
Blé panifiable	250.298	25.778.153	76.703	7.911.093	173.595	226%	17.867.061	226%
Orge	4.710.797	477.713.686	925.385	94.445.665	3.785.412	409%	383.268.021	406%
Seigle								
Sorgho			502	50.812	-502	-100%	-50.812	-100%
Mais	461.394	46.872.618	556.111	56.510.040	-94.717	-17%	-9.637.422	-17%
<b>TOTAL CEREALES</b>	<b>5.422.490</b>	<b>550.364.457</b>	<b>1.558.701</b>	<b>158.917.609</b>	<b>3.863.790</b>	<b>248%</b>	<b>391.446.848</b>	<b>246%</b>
<b>TOTAL RIZ</b>								
Alcool Public	860.942	31.953.107	1.600.049	59.312.261	-739.107	-46%	-27.359.154	-46%
Alcool Mixte	4.920	70.559	11.067	180.503	-6.147	-56%	-109.944	-61%
<b>TOTAL ALCOOL (HL 100%)</b>	<b>865.862</b>	<b>32.023.667</b>	<b>1.611.116</b>	<b>59.492.764</b>	<b>-745.254</b>	<b>-46%</b>	<b>-27.469.098</b>	<b>-46%</b>
LEP	244.847	365.435.257	268.527	400.661.815	-23.679	-9%	-35.226.558	-9%
Beurre	71.534	155.803.825	78.688	171.396.018	-7.154	-9%	-15.592.192	-9%
<b>TOTAL LAIT ET BEURRE</b>	<b>316.381</b>	<b>521.239.082</b>	<b>347.215</b>	<b>572.057.832</b>	<b>-30.833</b>	<b>-9%</b>	<b>-50.818.751</b>	<b>-9%</b>
Sucre Blanc	13.226	4.246.524	34.080	10.975.054	-20.854	-61%	-6.728.530	-61%
Sucre Brut								
<b>TOTAL SUCRE</b>	<b>13.226</b>	<b>4.246.524</b>	<b>34.080</b>	<b>10.975.054</b>	<b>-20.854</b>	<b>-61%</b>	<b>-6.728.530</b>	<b>-61%</b>
Bov. carc.								
Bov. des.								
Eq. carc.								
<b>TOTAL EQ. CARCASSES</b>								
<b>GRAND TOTAL</b>		<b>1.107.873.729</b>		<b>801.443.260</b>			<b>306.430.470</b>	<b>38%</b>

SOURCE : The declarations of the Member States before controls.

(1) Period 13/2009 annual declaration

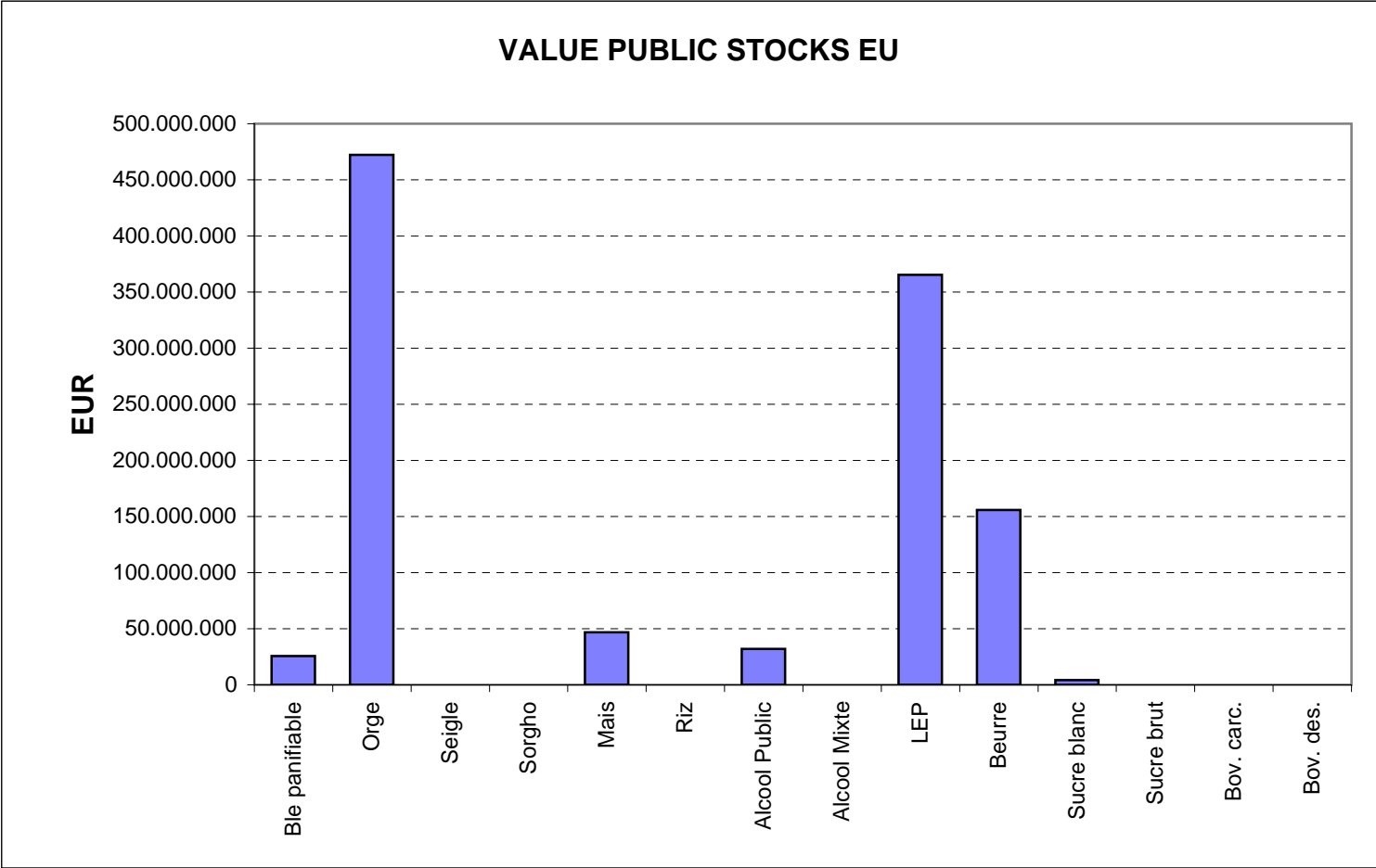
quantities are expressed in  
tonnes (alcohol in hl 100%)

ACCOUNTING VALUE OF THE PUBLIC INTERVENTION STOCKS AS AT : 31-may-10  
(BEFORE THE COMPLEMENTARY DEPRECIATION)

AGRI I.4  
J. FLORET tel. 53236

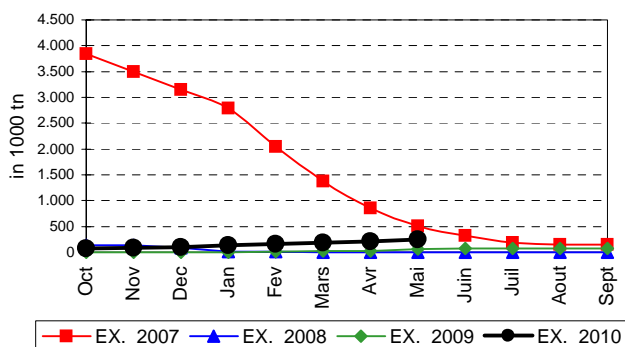
Produits		BE	BG	CZ	DK	DE	EE	IE	EL	ES	FR	IT	CY	LV	LT	LU	HU	MT	NL	OS	PL	PO	RO	SI	SK	FIN	SE	UK	TOTAL	
BLE PANIF	quant.		6.599	80.075											91	119.749					621				34.250	8.913			250.298	
	valeur		668.708	8.405.495											8.867	12.244.289					62.820				3.477.420	910.554			25.778.153	
ORGE	quant.	34.954	36.862	341.541	16.218	1.524.438	67.092				708.858			22.993	136.061		349.131			42.635	305.574		54.730		150.052	643.970	150.084	125.604	4.710.797	
	valeur	3.538.755	3.782.433	36.076.942	1.628.088	153.023.070	6.953.454				72.062.483			2.317.023	13.690.413		35.555.538			4.325.343	30.639.856		5.581.412		15.270.786	65.601.186	15.232.064	12.434.839	477.713.686	
SEIGLE	quant.																													
SEIGLE	valeur																													
SORGHO	quant.																													
SORGHO	valeur																													
MAIS	quant.																377.518								83.877				461.394	
	valeur																38.242.547								8.630.071				46.872.618	
TOT.CER	quant.	34.954	43.462	421.616	16.218	1.524.438	67.092				708.858			22.993	136.152		846.398			42.635	306.195		54.730		268.179	652.883	150.084	125.604	5.422.490	
RIZ	quant.																													
RIZ	valeur																													
ALC.P.	quant.								60.269	465.582	111.730	89.046	7.219				54.966					72.130							860.942	
	valeur								2.229.366	17.328.952	4.135.114	3.292.043	266.516				2.033.734					2.667.383							31.953.107	
ALC.M.	quant.										1.164	3.756																	4.920	
	valeur										4.611	65.949																	70.559	
TOT.ALC.	quant.								60.269	465.582	112.894	92.802	7.219				54.966					72.130							865.862	
LEP	quant.	24.122		3.721		63.763	1.833	32.170		1.382	53.130				9.132				19.860		11.959	2.433				1.077	3.614	16.651	244.847	
LEP	valeur	35.721.397		5.861.954		94.872.856	2.622.495	48.058.889		2.105.975	79.604.178				13.686.517				29.689.284		17.731.705	3.642.096				1.612.960	5.412.002	24.812.948	365.435.257	
BEURRE	quant.	2.734		527		8.158	1.153	13.922		8.762	12.511				1.693				11.541		939	5.079						4.515	71.534	
	valeur	5.959.928		1.200.445		17.783.406	2.355.675	30.348.859		19.088.455	27.258.831				3.689.732				25.158.335		2.048.504	11.071.712						9.839.943	155.803.825	
TOT L&B	quant.	26.856		4.248		71.921	2.986	46.093		10.144	65.642				10.824				31.401		12.898	7.512				1.077	3.614	21.166	316.381	
S. BLANC	quant.			9				995				12.222																	13.226	
	valeur			3.052				289.475				3.953.997																	4.246.524	
S. BRUT	quant.																													
	valeur																													
TOT. SUC	quant.			9				995				12.222																	13.226	
BOV.QUA	quant.																													
BOV.QUA	valeur																													
BOV.DES	quant.																													
BOV.DES	valeur																													
EQ. CARC	quant.																													
TOT EQ	quant.																													
EU TOTAL	valeur	45.220.080	4.451.141	51.547.887	1.628.088	265.679.333	11.931.625	78.697.223	2.229.366	38.523.381	183.065.217	7.311.989	266.516	2.317.023	31.075.529	88.076.108		54.847.619	4.325.343	50.482.885	17.381.191	5.581.412		27.378.276	68.124.700	20.644.067	47.087.729	1.107.873.729		

**PUBLIC INTERVENTION STOCKS**

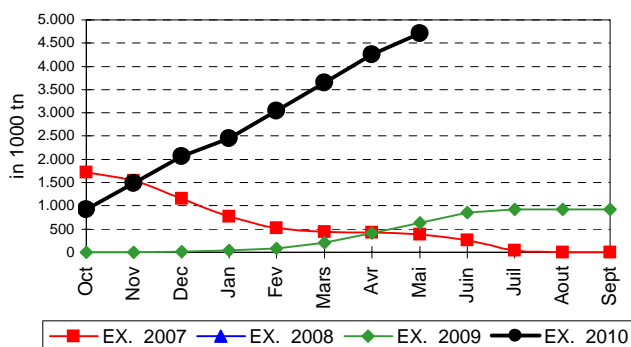


## EVOLUTION IN QUANTITIES OF PUBLIC INTERVENTION STOCKS

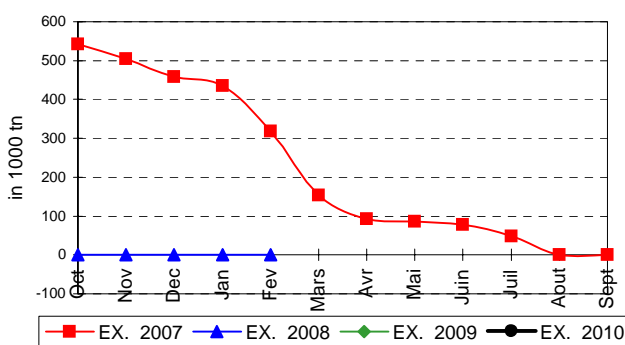
### BLE TENDRE PANIFIABLE



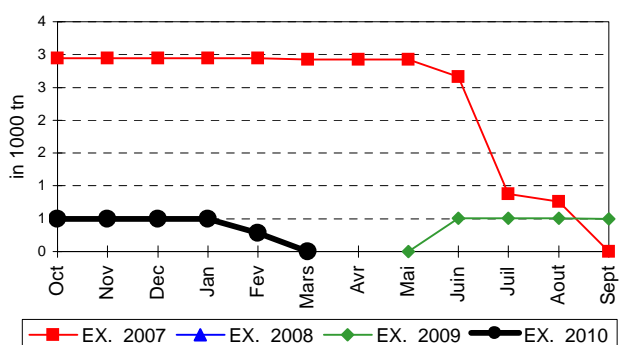
### ORGE



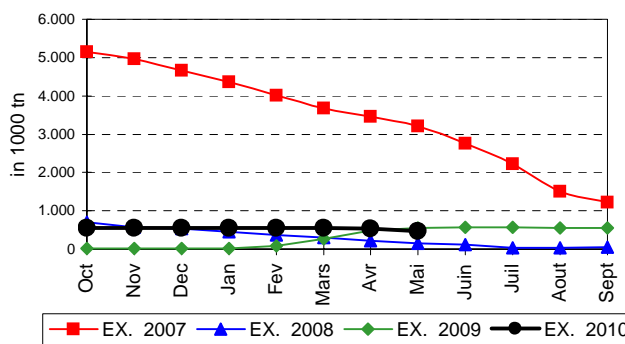
### SEIGLE



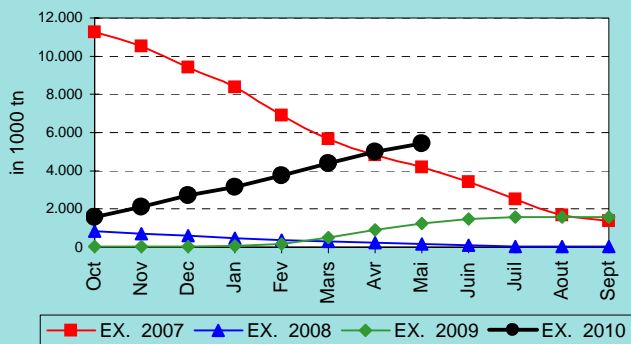
### SORGHO



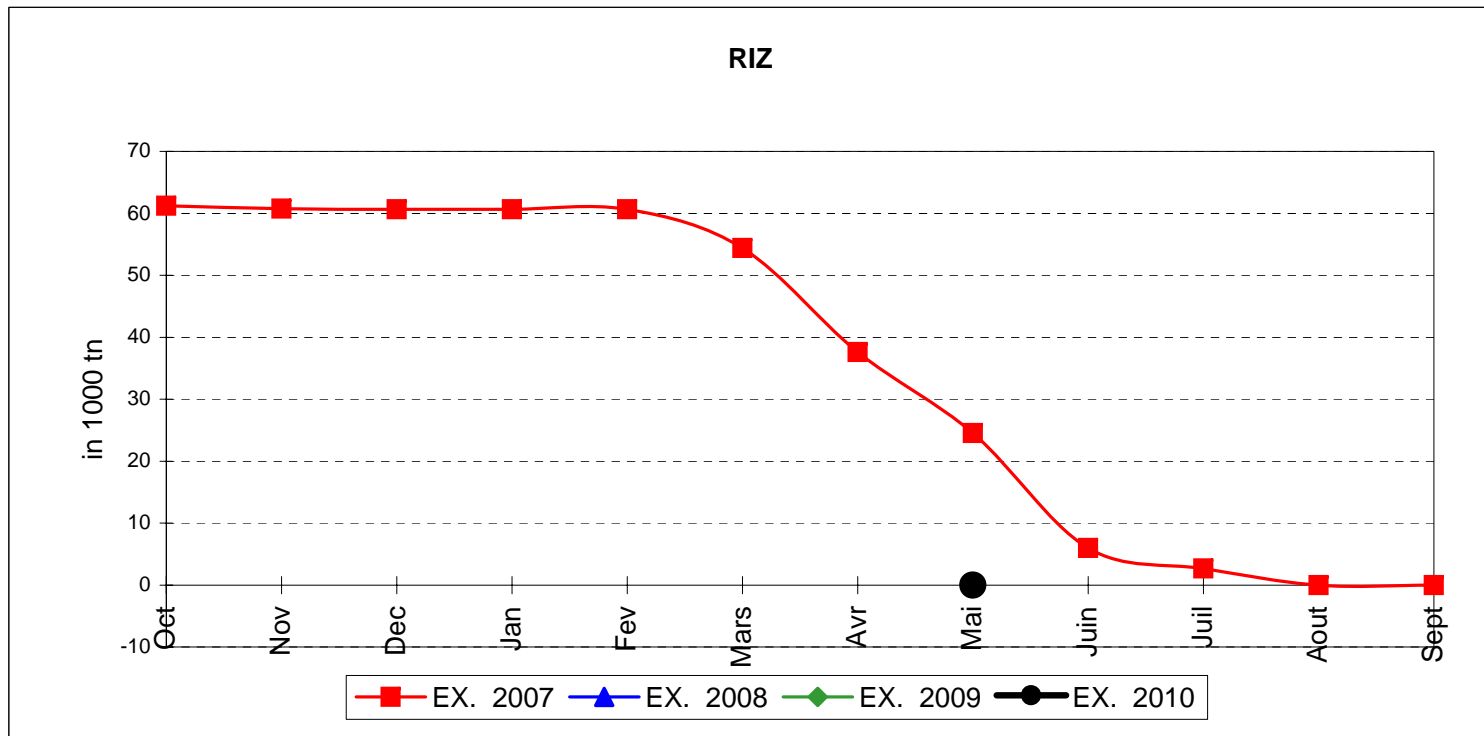
### MAIS



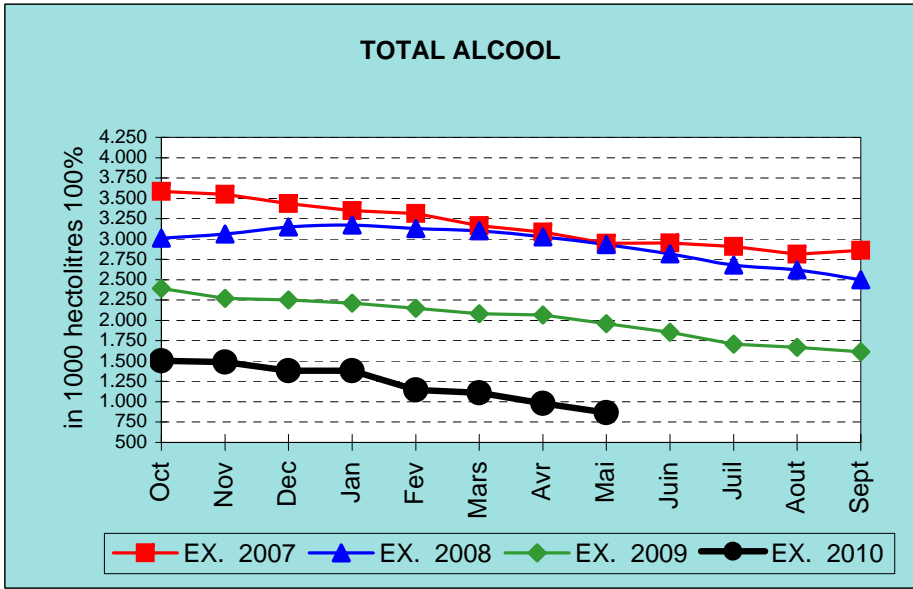
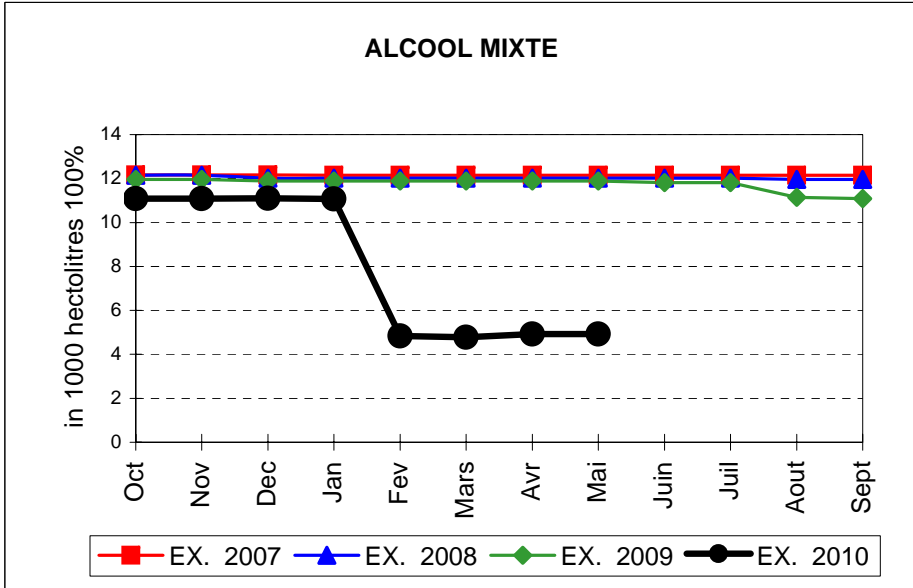
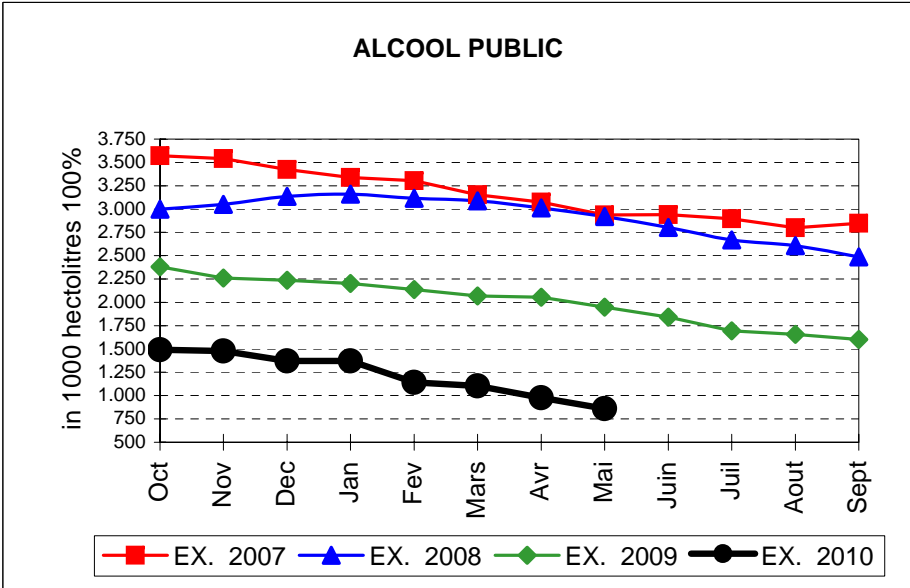
### TOTAL CEREALES



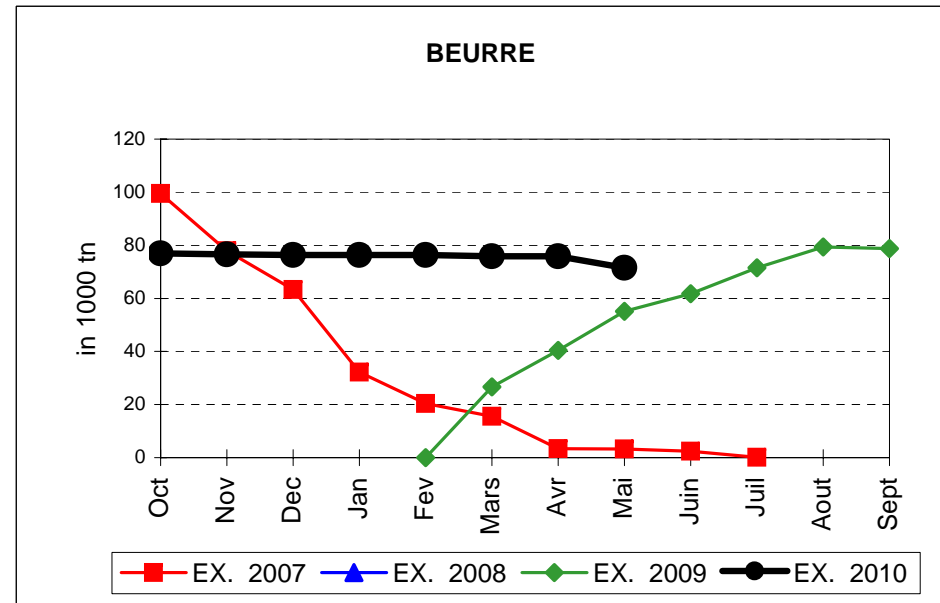
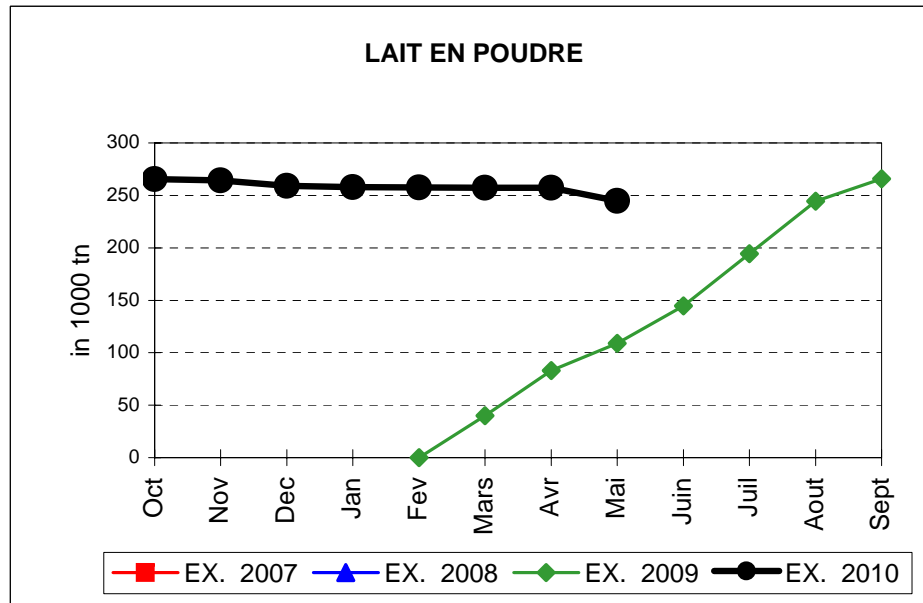
## EVOLUTION IN QUANTITIES OF PUBLIC INTERVENTION STOCKS



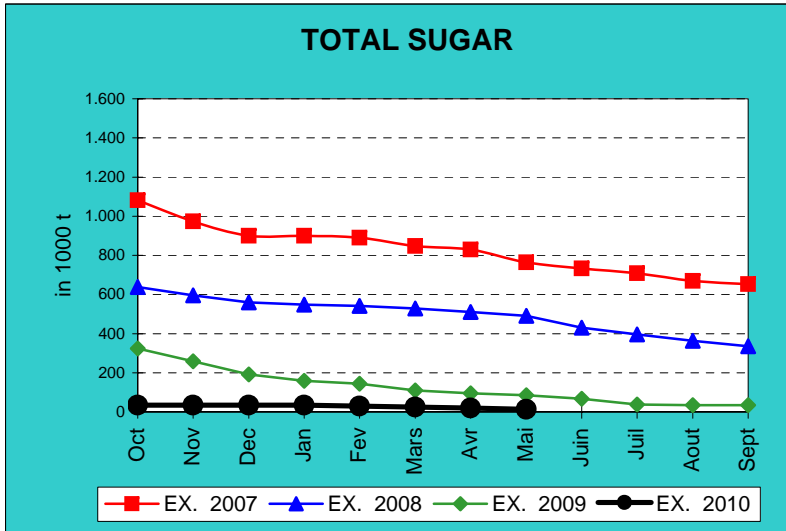
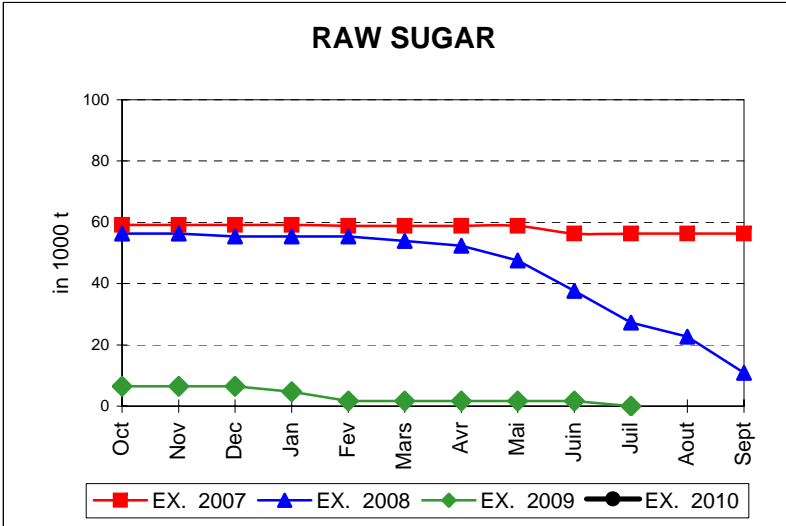
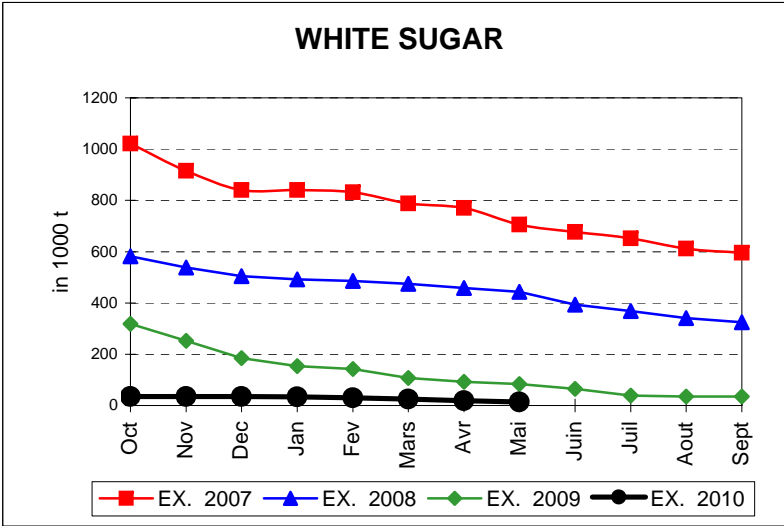
# EVOLUTION IN QUANTITIES OF PUBLIC INTERVENTION STOCKS



## EVOLUTION IN QUANTITIES OF PUBLIC INTERVENTION STOCKS



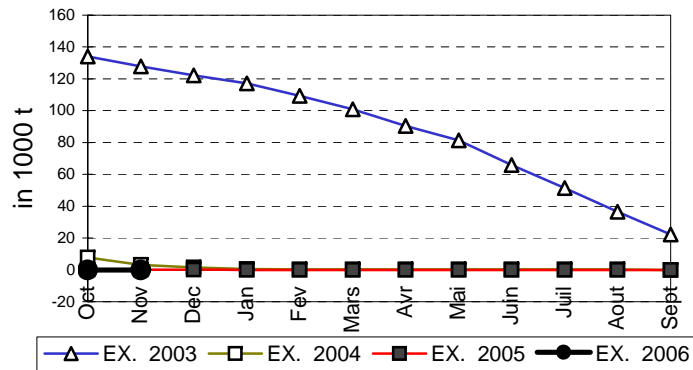
# EVOLUTION IN QUANTITIES OF PUBLIC INTERVENTION STOCKS



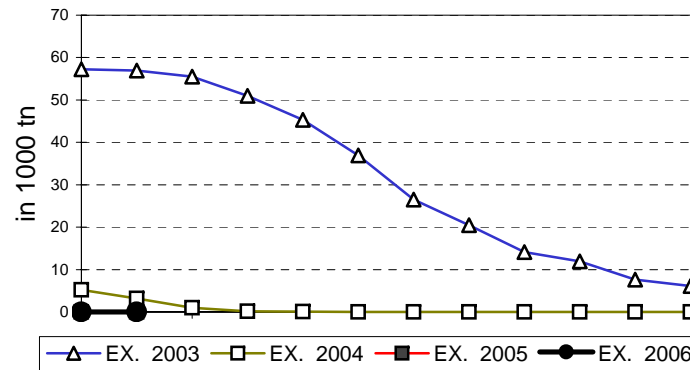


## EVOLUTION IN QUANTITIES OF PUBLIC INTERVENTION STOCKS

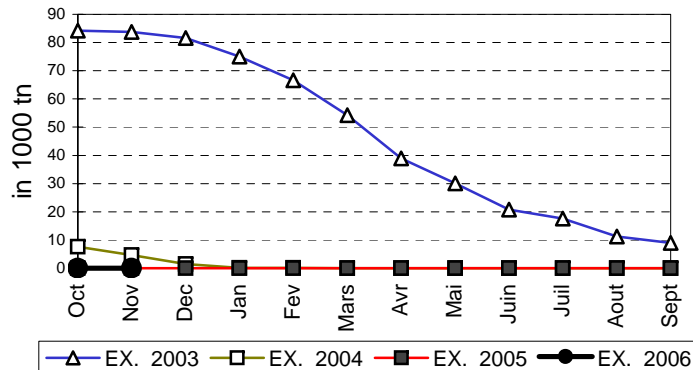
### VIANDE BOVINE CARCASSES



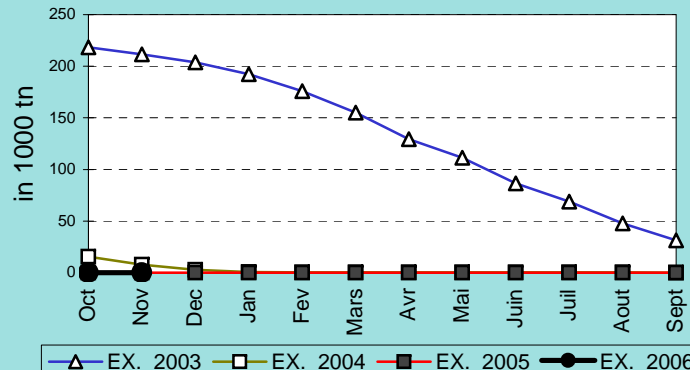
### VIANDE BOVINE DESOSSEE



### VIANDE DESOSSEE EN EQUIVALENT CARCASSES



### TOTAL VIANDE EN EQUIVALENT CARCASSES



## COMPARED WITH PREVIOUS MONTH

EU TOTAL	31-may-10		30-abr-10		CHANGE IN QTY		CHANGE IN VALUE	
	QUANTITY (tn or hl)	VALUE (in Euro)	QUANTITY (tn or hl)	VALUE (in Euro)	ABSOLUTE (tn or hl)	%	ABSOLUTE (in Euro)	%
CLICK TOTALS FOR GRAPHICS	(a)	(b)	(c)	(d)	(e)=(a)-(c)	(f)=(e)/(c)*%	(g)=(b)-(d)	(h)=(g)/(d)*%
Blé panifiable	250.298	25.778.153	206.934	21.328.111	43.364	21%	4.450.043	21%
Orge	4.710.797	477.713.686	4.258.587	431.496.587	452.210	11%	46.217.099	11%
Seigle								
Sorgho								
Mais	461.394	46.872.618	527.719	53.631.245	-66.324	-13%	-6.758.627	-13%
<b>TOTAL CEREALES</b>	<b>5.422.490</b>	<b>550.364.457</b>	<b>4.993.240</b>	<b>506.455.943</b>	<b>429.250</b>	<b>9%</b>	<b>43.908.514</b>	<b>9%</b>
<b>TOTAL RIZ</b>								
Alcool Public	860.942	31.953.107	976.943	36.253.210	-116.001	-12%	-4.300.102	-12%
Alcool Mixte	4.920	70.559	4.928	70.593	-8	0%	-33	0%
<b>TOTAL ALCOOL (HL 100%)</b>	<b>865.862</b>	<b>32.023.667</b>	<b>981.872</b>	<b>36.323.802</b>	<b>-116.010</b>	<b>-12%</b>	<b>-4.300.136</b>	<b>-12%</b>
LEP	244.847	365.435.257	257.261	383.850.497	-12.414	-5%	-18.415.240	-5%
Beurre	71.534	155.803.825	75.872	165.260.250	-4.338	-6%	-9.456.425	-6%
<b>TOTAL LAIT ET BEURRE</b>	<b>316.381</b>	<b>521.239.082</b>	<b>333.133</b>	<b>549.110.747</b>	<b>-16.752</b>	<b>-5%</b>	<b>-27.871.665</b>	<b>-5%</b>
Sucre blanc	13.226	4.246.524	18.961	6.101.911	-5.735	-30%	-1.855.387	-30%
Sucre brut								
<b>TOTAL SUCRE</b>	<b>13.226</b>	<b>4.246.524</b>	<b>18.961</b>	<b>6.101.911</b>	<b>-5.735</b>	<b>-30%</b>	<b>-1.855.387</b>	<b>-30%</b>
Bov. carc.								
Bov. des.								
Eq. carc.								
<b>TOTAL EQ. CARCASSES</b>								
<b>GRAND TOTAL</b>		<b>1.107.873.729</b>		<b>1.097.992.403</b>			<b>9.881.326</b>	<b>1%</b>

SOURCE : The declarations of the Member States before controls.

## COMPARED WITH PREVIOUS YEAR

EU TOTAL	31-may-10		31-may-09		CHANGE IN QTY		CHANGE IN VALUE	
	QUANTITY (tn or hl)	VALUE (in Euro)	QUANTITY (tn or hl)	VALUE (In Euro)	ABSOLUTE (tn or hl)	%	ABSOLUTE (in Euro)	%
CLICK TOTALS FOR GRAPHICS	(a)	(b)	(c)	(d)	(e)=(a)-(c)	(f)=(e)/(c)*%	(g)=(b)-(d)	(h)=(g)/(d)*%
<b>Blé panifiable</b>	250.298	25.778.153	61.478	6.781.346	188.821	307%	18.996.808	280%
<b>Orge</b>	4.710.797	477.713.686	634.068	67.698.523	4.076.729	643%	410.015.163	606%
<b>Seigle</b>								
<b>Sorgho</b>								
<b>Mais</b>	461.394	46.872.618	553.522	57.069.679	-92.128	-17%	-10.197.061	-18%
<b>TOTAL CEREALES</b>	<b>5.422.490</b>	<b>550.364.457</b>	<b>1.249.068</b>	<b>131.549.548</b>	<b>4.173.422</b>	<b>334%</b>	<b>418.814.909</b>	<b>318%</b>
<b>TOTAL RIZ</b>								
<b>Alcool Public</b>	860.942	31.953.107	1.949.911	83.282.790	-1.088.969	-56%	-51.329.682	-62%
<b>Alcool Mixte</b>	4.920	70.559	11.894	184.533	-6.974	-59%	-113.974	-62%
<b>TOTAL ALCOOL (HL 100%)</b>	<b>865.862</b>	<b>32.023.667</b>	<b>1.961.805</b>	<b>83.467.323</b>	<b>-1.095.943</b>	<b>-56%</b>	<b>-51.443.657</b>	<b>-62%</b>
<b>LEP</b>	244.847	365.435.257	108.990	185.323.935	135.858	125%	180.111.322	97%
<b>Beurre</b>	71.534	155.803.825	55.115	121.357.689	16.419	30%	34.446.137	28%
<b>TOTAL LAIT ET BEURRE</b>	<b>316.381</b>	<b>521.239.082</b>	<b>164.104</b>	<b>306.681.624</b>	<b>152.277</b>	<b>93%</b>	<b>214.557.458</b>	<b>70%</b>
<b>Sucre blanc</b>	13.226	4.246.524	83.376	27.401.737	-70.150	-84%	-23.155.213	-85%
<b>Sucre brut</b>			1.661	401.616	-1.661	-100%	-401.616	-100%
<b>TOTAL SUCRE</b>	<b>13.226</b>	<b>4.246.524</b>	<b>85.037</b>	<b>27.803.352</b>	<b>-71.811</b>	<b>-84%</b>	<b>-23.556.829</b>	<b>-85%</b>
<b>Bov. carc.</b>								
<b>Bov. des.</b>								
<b>Eq. carc.</b>								
<b>TOTAL EQ. CARCASSES</b>								
<b>GRAND TOTAL</b>		<b>1.107.873.729</b>		<b>549.501.847</b>			<b>558.371.882</b>	<b>102%</b>

SOURCE :

The declarations of the Member States before controls.

THE PUBLIC STORAGE FLASH REPORT AS AT								31-may-10	
ESPAÑA									
PRODUCTS	YEAR-TO-DATE		OPENING BALANCE		CHANGE IN QTY		CHANGE IN VALUE		
	QUANTITY (in tonnes or hl)	VALUE (in Euro)	QUANTITY (in tonnes or hl)	VALUE (in Euro)	ABSOLUTE (in tonnes or hl)	%	ABSOLUTE (in Euro)	%	
	(a)	(b)	(c)	(d)	(e)=(a)-(c)	(f)=(e)/(c)*%	(g)=(b)-(d)	(h)=(g)/(d)*%	
Ble panifiable									
Orge									
Seigle									
Sorgho									
Mais									
<b>TOTAL CEREALES</b>									
<b>RIZ</b>									
Alcool Public	465.582	17.328.952	574.043	21.365.391	-108.461	-19%	-4.036.439	-19%	
Alcool Mixte									
<b>TOT. ALCOOL (HL)</b>	<b>465.582</b>	<b>17.328.952</b>	<b>574.043</b>	<b>21.365.391</b>	<b>-108.461</b>	<b>-19%</b>	<b>-4.036.439</b>	<b>-19%</b>	
LEP	1.382	2.105.975	1.603	2.442.752	-221	-14%	-336.777	-14%	
Beurre	8.762	19.088.455	9.335	20.336.778	-573	-6%	-1.248.323	-6%	
<b>TOTAL L &amp; B</b>	<b>10.144</b>	<b>21.194.430</b>	<b>10.936</b>	<b>22.779.530</b>	<b>-794</b>	<b>-7%</b>	<b>-1.585.100</b>	<b>-7%</b>	
Sucre Blanc									
Sucre Brut									
<b>TOTAL SUCRE</b>									
Bov. carc.									
Bov. des.									
Eq. carc.									
<b>TOTAL EQ. CARC.</b>									
<b>GRAND TOTAL</b>		<b>38.523.381</b>		<b>44.144.921</b>			<b>-5.621.539</b>	<b>-13%</b>	

31-may-10

