

CHOOSE COUNTRY

EU TOTAL	YEAR-TO-DATE		OPENING BALANCE (1)		CHANGE IN QTY		CHANGE IN VALUE	
	QUANTITY (tn or hl)	VALUE (in Euro)	QUANTITY (tn or hl)	VALUE (in Euro)	ABSOLUTE (tn or hl)	%	ABSOLUTE (in Euro)	%
CLICK TOTALS FOR GRAPHICS	(a)	(b)	(c)	(d)	(e)=(a)-(c)	(f)=(e)/(c)*%	(g)=(b)-(d)	(h)=(g)/(d)*%
Blé panifiable								
Orge	160.562	16.241.181	165.326	16.717.611	-4.764	-3%	-476.431	-3%
Seigle								
Sorgho								
Mais								
TOTAL CEREALES	160.562	16.241.181	165.326	16.717.611	-4.764	-3%	-476.431	-3%
TOTAL RIZ								
Alcool Public			55.857	1.566.771	-55.857	-100%	-1.566.771	-100%
Alcool Mixte								
TOTAL ALCOOL (HL 100%)			55.857	1.566.771	-55.857	-100%	-1.566.771	-100%
LEP	2.993	4.421.016	53.556	79.832.007	-50.564	-94%	-75.410.992	-94%
Beurre	1	2.813	1	2.922	0	-4%	-109	-4%
TOTAL LAIT ET BEURRE	2.994	4.423.829	53.558	79.834.930	-50.564	-94%	-75.411.101	-94%
Sucre Blanc								
Sucre Brut								
TOTAL SUCRE								
Bov. carc.								
Bov. des.								
Eq. carc.								
TOTAL EQ. CARCASSES								
GRAND TOTAL		20.665.010		98.119.313			-77.454.303	-79%

SOURCE : The declarations of the Member States before controls.

(1) Period 13/2011 annual declaration

quantities are expressed in
tonnes (alcohol in hl 100%)

ACCOUNTING VALUE OF THE PUBLIC INTERVENTION STOCKS AS AT :
(BEFORE THE COMPLEMENTARY DEPRECIATION)

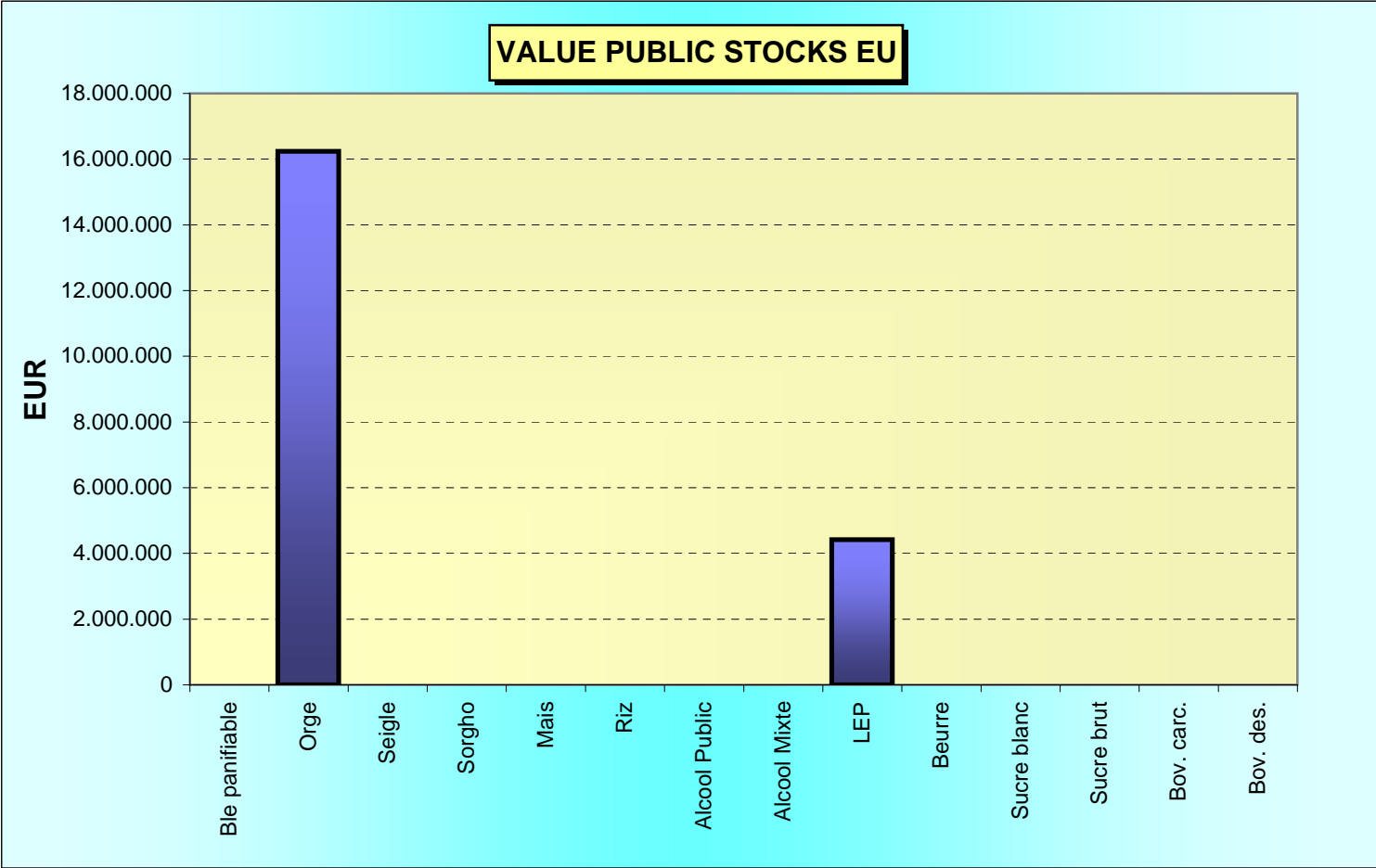
31-may-12

AGRI I.4

G. MERTENS tel. 65910

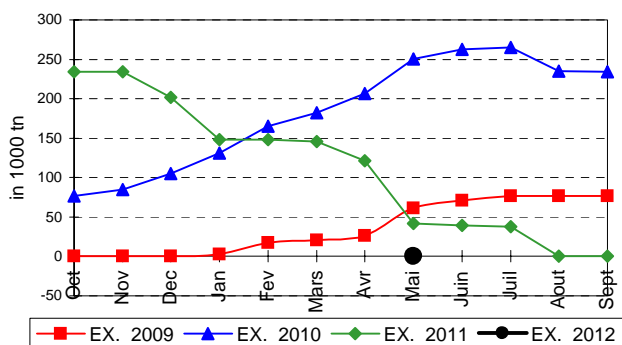
Produits		BE	BG	CZ	DK	DE	EE	IE	EL	ES	FR	IT	CY	LV	LT	LU	HU	MT	NL	OS	PL	PO	RO	SI	SK	FIN	SE	UK	TOTAL
BLE PANIF	quant.																												
	valeur																												
ORGE	quant.					16.856					396															75.006	63.143	5.161	
	valeur					1.694.032					40.123															7.598.828	6.397.006	511.191	
SEIGLE	quant.																												
SEIGLE	valeur																												
SORGHO	quant.																												
SORGHO	valeur																												
MAIS	quant.																												
MAIS	valeur																												
TOT.CER	quant.					16.856					396															75.006	63.143	5.161	
TOT.CER	valeur																												
RIZ	quant.																												
RIZ	valeur																												
ALC.P.	quant.																												
ALC.P.	valeur																												
ALC.M.	quant.																												
ALC.M.	valeur																												
TOT.ALC.	quant.																												
LEP	quant.					805	635												288									1.265	
LEP	valeur					1.197.422	908.769												430.169									1.884.656	
BEURRE	quant.						1									1													
BEURRE	valeur						1.124								1.689														
TOT L&B	quant.					805	636								1				288									1.265	
TOT L&B	valeur																												
S. BLANC	quant.																												
S. BLANC	valeur																												
S. BRUT	quant.																												
S. BRUT	valeur																												
TOT. SUC	quant.																												
BOV.QUA	quant.																												
BOV.QUA	valeur																												
BOV.DES	quant.																												
BOV.DES	valeur																												
EQ. CARC	quant.																												
TOT EQ	quant.																												
EU TOTAL	valeur					2.891.454	909.893				40.123				1.689				430.169							7.598.828	6.397.006	2.395.847	20.665.010

PUBLIC INTERVENTION STOCKS

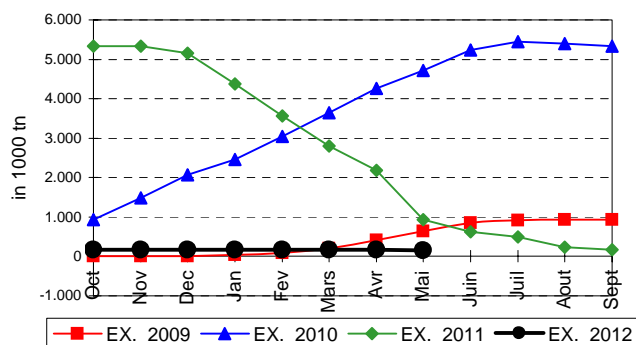


EVOLUTION IN QUANTITIES OF PUBLIC INTERVENTION STOCKS

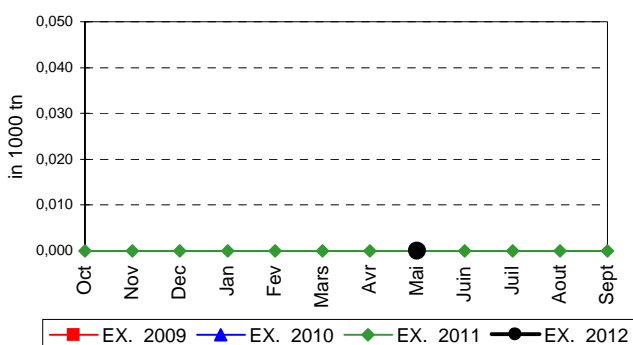
BLE TENDRE PANIFIABLE



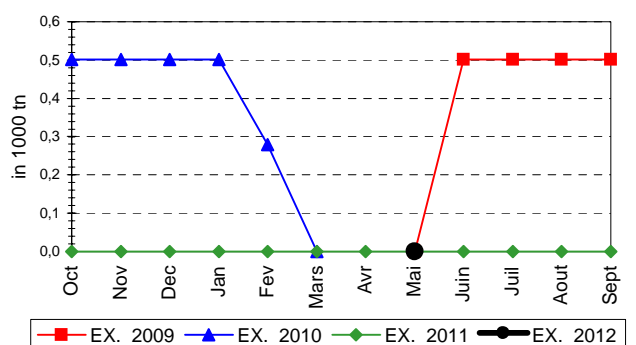
ORGE



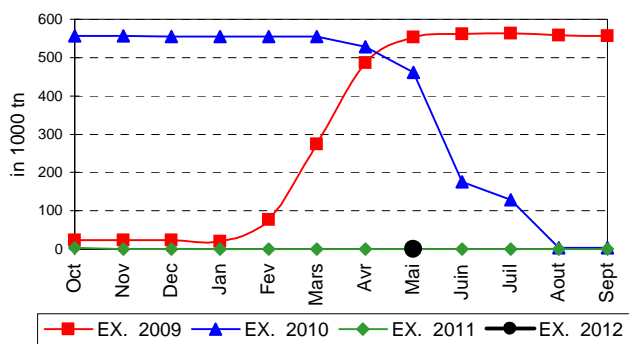
SEIGLE



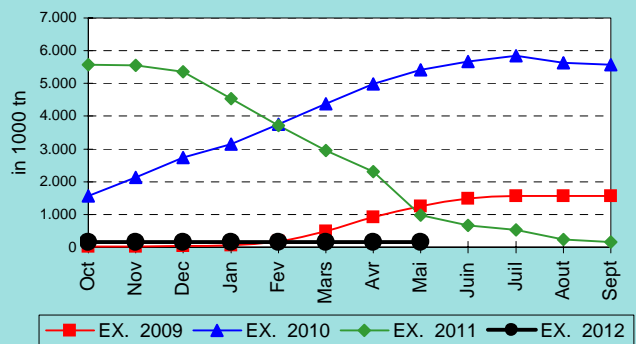
SORGHO



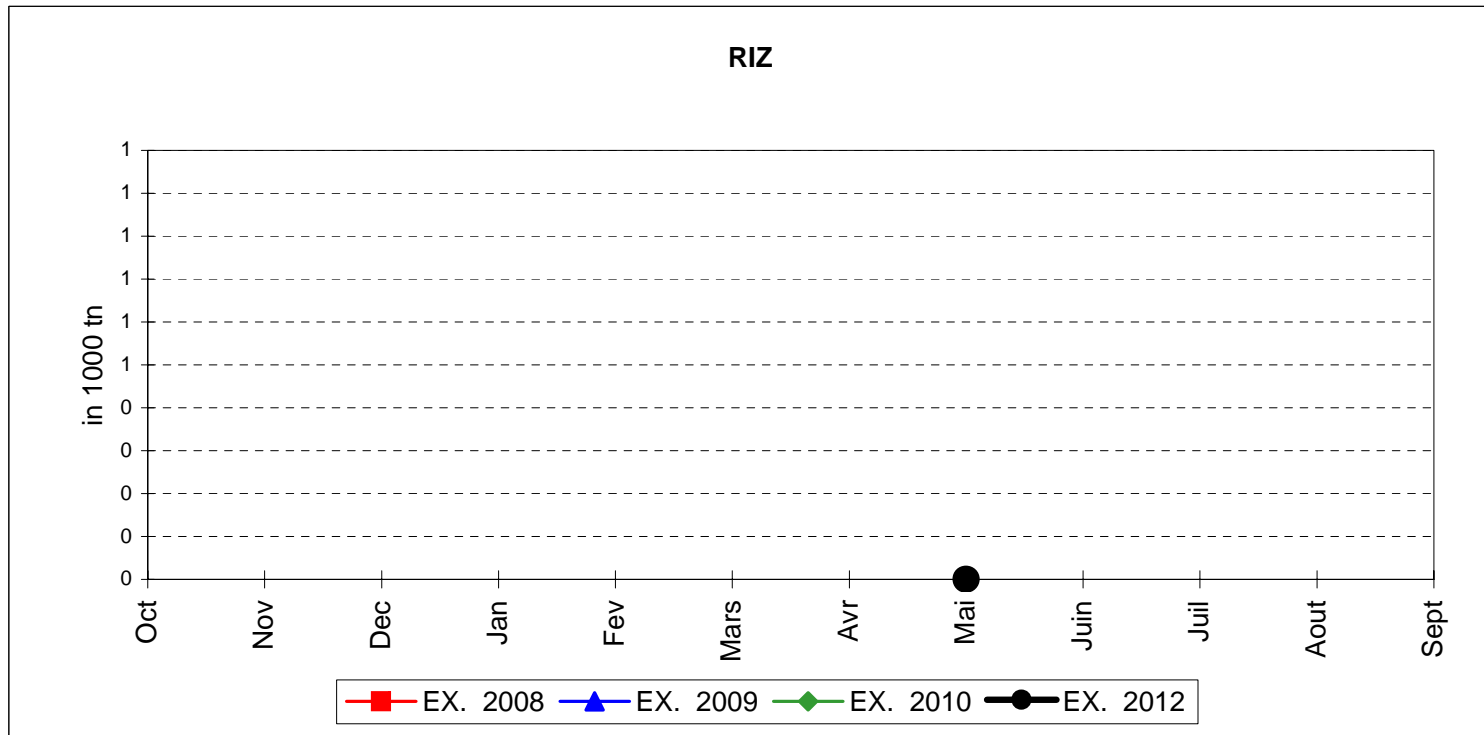
MAIS



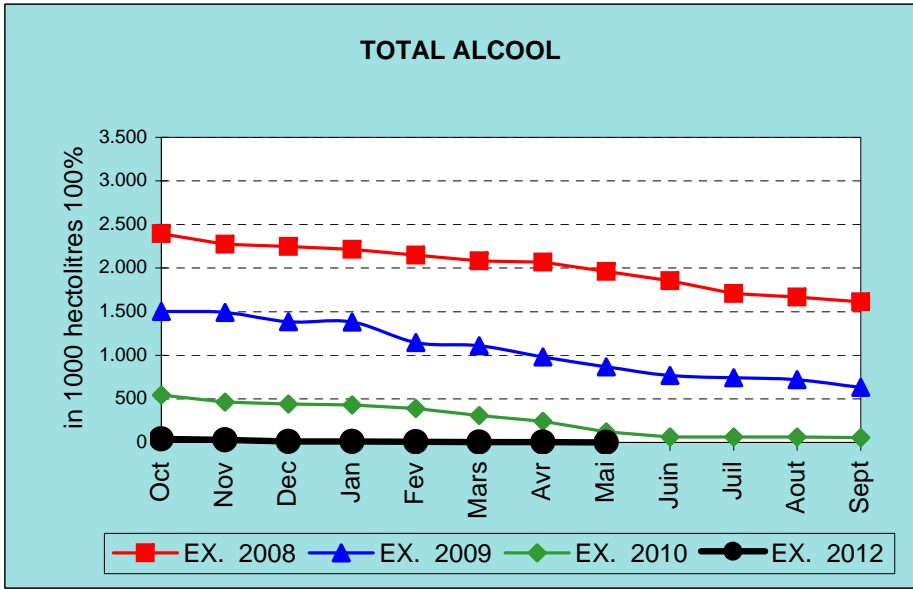
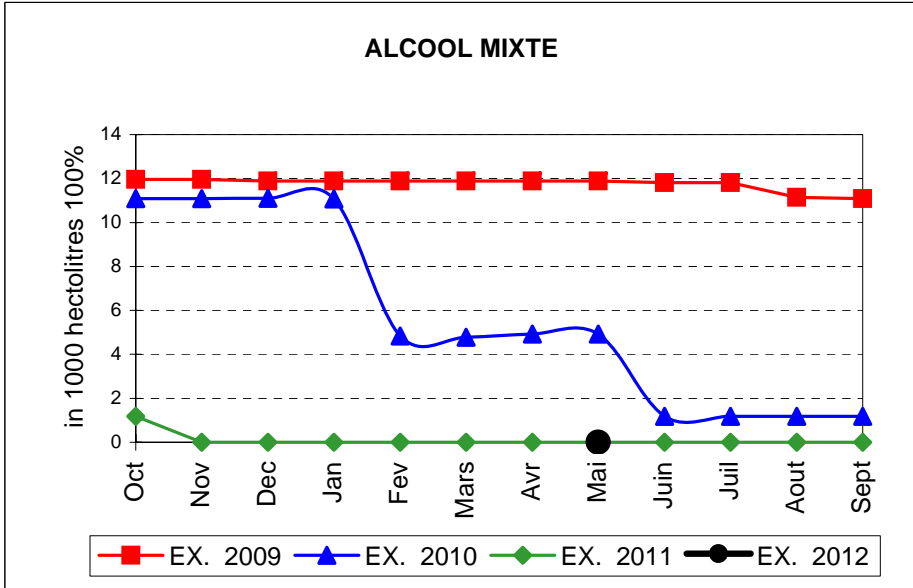
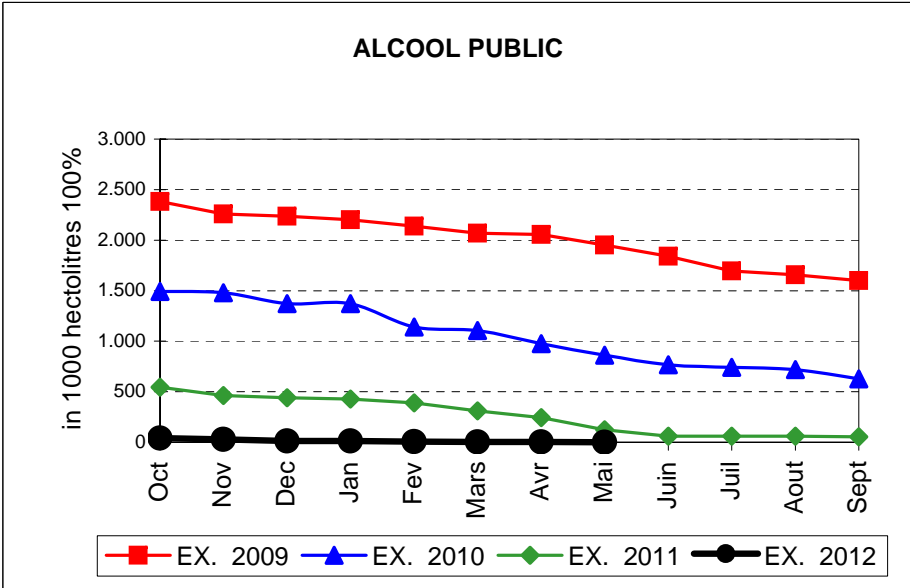
TOTAL CEREALES



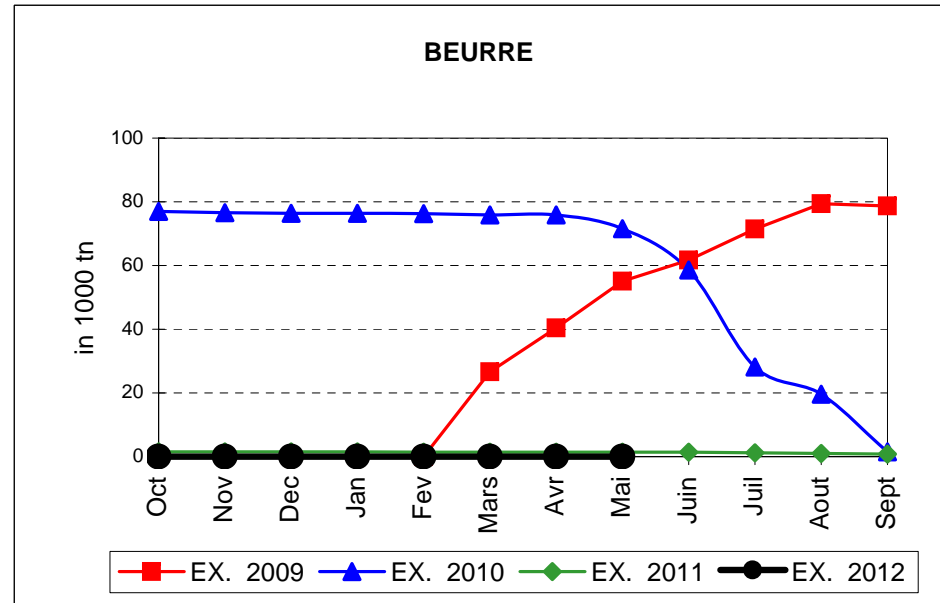
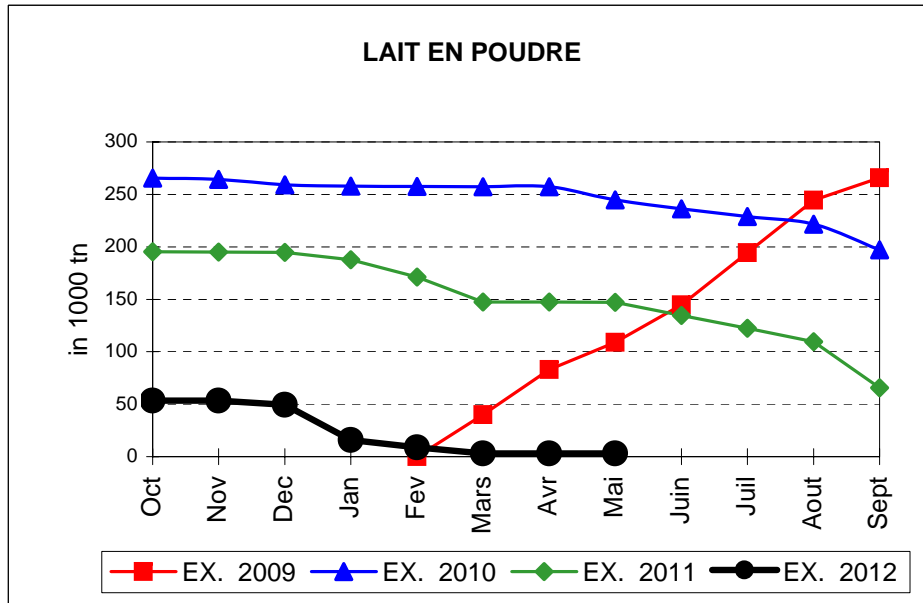
EVOLUTION IN QUANTITIES OF PUBLIC INTERVENTION STOCKS



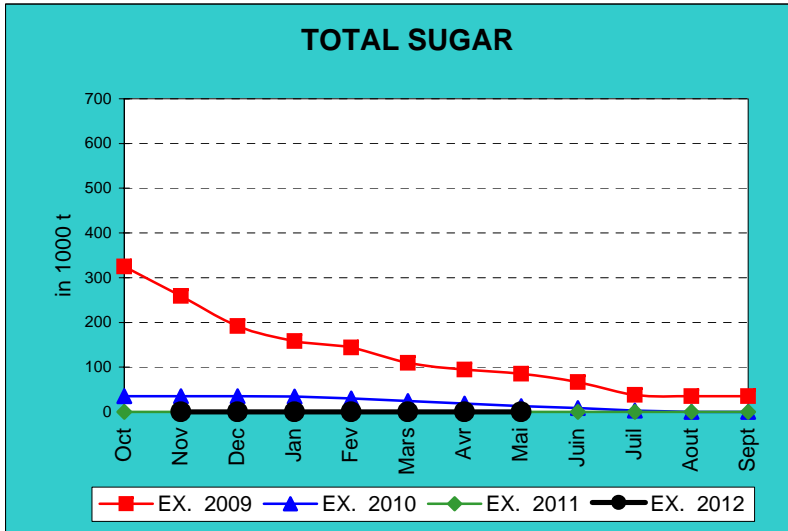
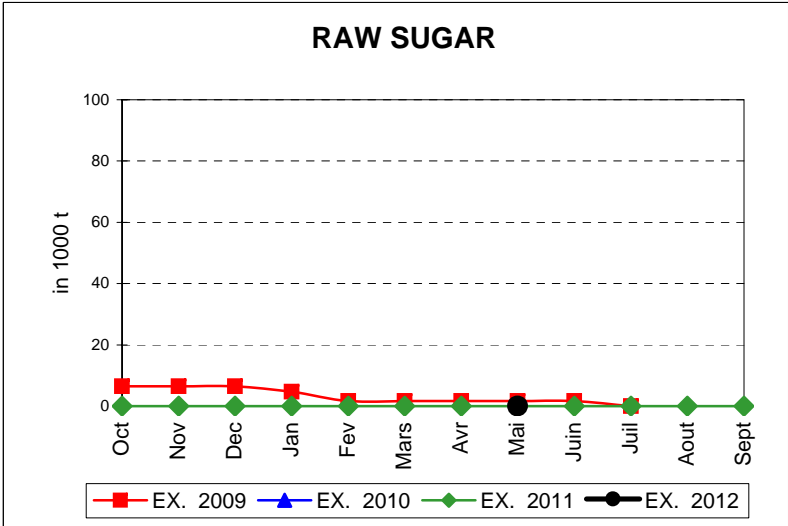
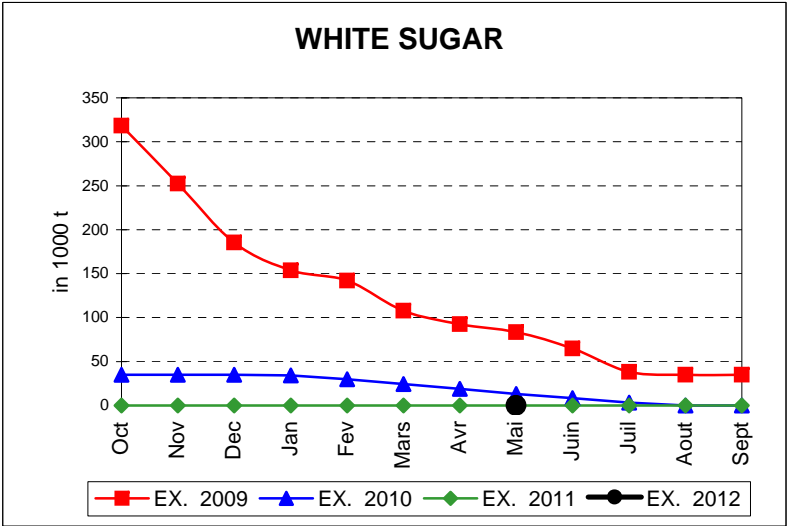
EVOLUTION IN QUANTITIES OF PUBLIC INTERVENTION STOCKS



EVOLUTION IN QUANTITIES OF PUBLIC INTERVENTION STOCKS

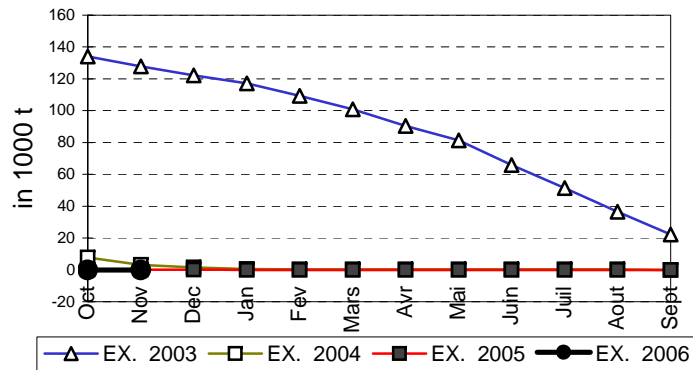


EVOLUTION IN QUANTITIES OF PUBLIC INTERVENTION STOCKS

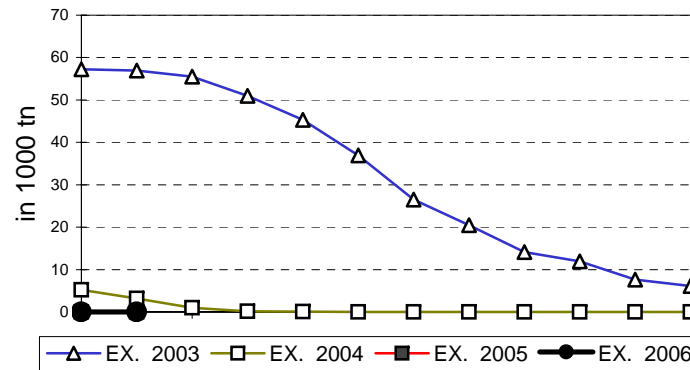


EVOLUTION IN QUANTITIES OF PUBLIC INTERVENTION STOCKS

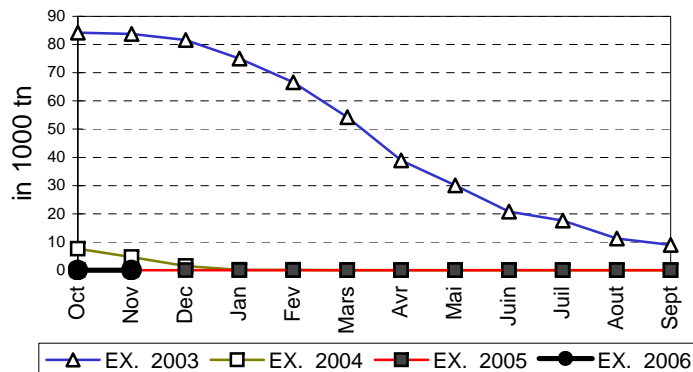
VIANDE BOVINE CARCASSES



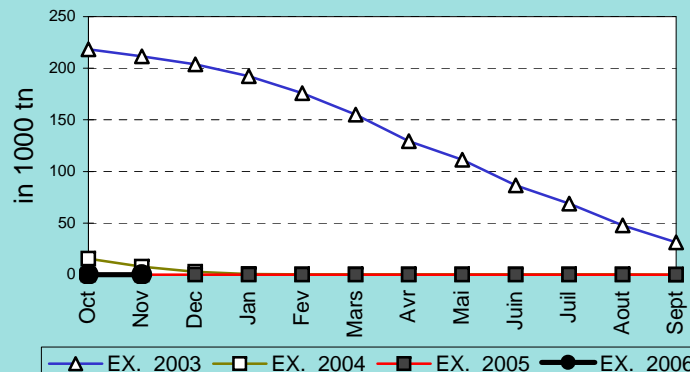
VIANDE BOVINE DESOSSEE



VIANDE DESOSSEE EN EQUIVALENT CARCASSES



TOTAL VIANDE EN EQUIVALENT CARCASSES



COMPARED WITH PREVIOUS MONTH

EU TOTAL	31-may-12		30-abr-12		CHANGE IN QTY		CHANGE IN VALUE	
	QUANTITY (tn or hl)	VALUE (in Euro)	QUANTITY (tn or hl)	VALUE (In Euro)	ABSOLUTE (tn or hl)	%	ABSOLUTE (in Euro)	%
CLICK TOTALS FOR GRAPHICS	(a)	(b)	(c)	(d)	(e)=(a)-(c)	(f)=(e)/(c)*%	(g)=(b)-(d)	(h)=(g)/(d)*%
Blé panifiable								
Orge	160.562	16.241.181	162.104	16.397.398	-1.542	-1%	-156.217	-1%
Seigle								
Sorgho								
Mais								
TOTAL CEREALES	160.562	16.241.181	162.104	16.397.398	-1.542	-1%	-156.217	-1%
TOTAL RIZ								
Alcool Public			2.791	78.263	-2.791	-100%	-78.263	-100%
Alcool Mixte								
TOTAL ALCOOL (HL 100%)			2.791	78.263	-2.791	-100%	-78.263	-100%
LEP	2.993	4.421.016	2.993	4.421.689	0	0%	-674	0%
Beurre	1	2.813	1	2.922	0	-4%	-109	-4%
TOTAL LAIT ET BEURRE	2.994	4.423.829	2.994	4.424.611	-1	0%	-782	0%
Sucre blanc								
Sucre brut								
TOTAL SUCRE								
Bov. carc.								
Bov. des.								
Eq. carc.								
TOTAL EQ. CARCASSES								
GRAND TOTAL		20.665.010		20.900.273			-235.263	-1%

SOURCE : The declarations of the Member States before controls.

COMPARED WITH PREVIOUS YEAR

EU TOTAL	31-may-12		31-may-11		CHANGE IN QTY		CHANGE IN VALUE	
	QUANTITY (tn or hl)	VALUE (in Euro)	QUANTITY (tn or hl)	VALUE (In Euro)	ABSOLUTE (tn or hl)	%	ABSOLUTE (in Euro)	%
CLICK TOTALS FOR GRAPHICS	(a)	(b)	(c)	(d)	(e)=(a)-(c)	(f)=(e)/(c)*%	(g)=(b)-(d)	(h)=(g)/(d)*%
Blé panifiable			42.049	4.258.109	-42.049	-100%	-4.258.109	-100%
Orge	160.562	16.241.181	929.127	94.424.924	-768.565	-83%	-78.183.743	-83%
Seigle								
Sorgho								
Mais								
TOTAL CEREALES	160.562	16.241.181	971.176	98.683.033	-810.614	-83%	-82.441.852	-84%
TOTAL RIZ								
Alcool Public			122.170	4.153.471	-122.170	-100%	-4.153.471	-100%
Alcool Mixte								
TOTAL ALCOOL (HL 100%)			122.170	4.153.471	-122.170	-100%	-4.153.471	-100%
LEP	2.993	4.421.016	146.982	219.139.617	-143.989	-98%	-214.718.602	-98%
Beurre	1	2.813	1.435	3.103.957	-1.434	-100%	-3.101.144	-100%
TOTAL LAIT ET BEURRE	2.994	4.423.829	148.417	222.243.574	-145.423	-98%	-217.819.746	-98%
Sucre blanc								
Sucre brut								
TOTAL SUCRE								
Bov. carc.								
Bov. des.								
Eq. carc.								
TOTAL EQ. CARCASSES								
GRAND TOTAL		20.665.010		325.080.078			-304.415.069	-94%

SOURCE :

The declarations of the Member States before controls.

THE PUBLIC STORAGE FLASH REPORT AS AT						31-may-12			
ESPAÑA									
PRODUCTS	YEAR-TO-DATE		OPENING BALANCE		CHANGE IN QTY		CHANGE IN VALUE		
	QUANTITY (in tonnes or hl)	VALUE (in Euro)	QUANTITY (in tonnes or hl)	VALUE (in Euro)	ABSOLUTE (in tonnes or hl)	%	ABSOLUTE (in Euro)	%	
	(a)	(b)	(c)	(d)	(e)=(a)-(c)	(f)=(e)/(c)*%	(g)=(b)-(d)	(h)=(g)/(d)*%	
Ble panifiable									
Orge									
Seigle									
Sorgho									
Mais									
TOTAL CEREALES									
RIZ									
Alcool Public									
Alcool Mixte									
TOT. ALCOOL (HL)									
LEP									
Beurre									
TOTAL L & B									
Sucre Blanc									
Sucre Brut									
TOTAL SUCRE									
Bov. carc.									
Bov. des.									
Eq. carc.									
TOTAL EQ. CARC.									
GRAND TOTAL									

31-may-12

