

CHOOSE COUNTRY

EU TOTAL	YEAR-TO-DATE		OPENING BALANCE (1)		CHANGE IN QTY		CHANGE IN VALUE	
	QUANTITY (tn or hl)	VALUE (in Euro)	QUANTITY (tn or hl)	VALUE (In Euro)	ABSOLUTE (tn or hl)	%	ABSOLUTE (in Euro)	%
CLICK TOTALS FOR GRAPHICS	(a)	(b)	(c)	(d)	(e)=(a)-(c)	(f)=(e)/(c)*%	(g)=(b)-(d)	(h)=(g)/(d)*%
Blé panifiable	71.155	7.590.557	37	3.302	71.118	193729%	7.587.255	229773%
Orge	856.016	91.353.291			856.016		91.353.291	
Seigle								
Sorgho	502	51.417			502		51.417	
Mais	561.711	57.922.440	47.207	4.635.238	514.504	1090%	53.287.202	1150%
TOTAL CEREALES	1.489.384	156.917.705	47.244	4.638.540	1.442.140	3053%	152.279.165	3283%
TOTAL RIZ								
Alcool Public	1.841.288	78.677.012	2.484.895	104.449.771	-643.607	-26%	-25.772.759	-25%
Alcool Mixte	11.817	184.229	11.894	184.533	-77	-1%	-304	0%
TOTAL ALCOOL (HL 100%)	1.853.106	78.861.240	2.496.789	104.634.304	-643.683	-26%	-25.773.063	-25%
LEP	144.604	243.305.972			144.604		243.305.972	
Beurre	61.724	135.910.163			61.724		135.910.163	
TOTAL LAIT ET BEURRE	206.328	379.216.135			206.328		379.216.135	
Sucre Blanc	64.795	21.436.550	325.254	108.760.191	-260.458	-80%	-87.323.640	-80%
Sucre Brut	1.661	401.616	10.902	2.635.883	-9.241	-85%	-2.234.267	-85%
TOTAL SUCRE	66.456	21.838.166	336.156	111.396.074	-269.699	-80%	-89.557.907	-80%
Bov. carc.								
Bov. des.								
Eq. carc.								
TOTAL EQ. CARCASSES								
GRAND TOTAL		636.833.246		220.668.917			416.164.329	189%

SOURCE : The declarations of the Member States before controls.

(1) Period 13/2008 annual declaration

quantities are expressed in
tonnes (alcohol in hl 100%)

ACCOUNTING VALUE OF THE PUBLIC INTERVENTION STOCKS AS AT :
(BEFORE THE COMPLEMENTARY DEPRECIATION)

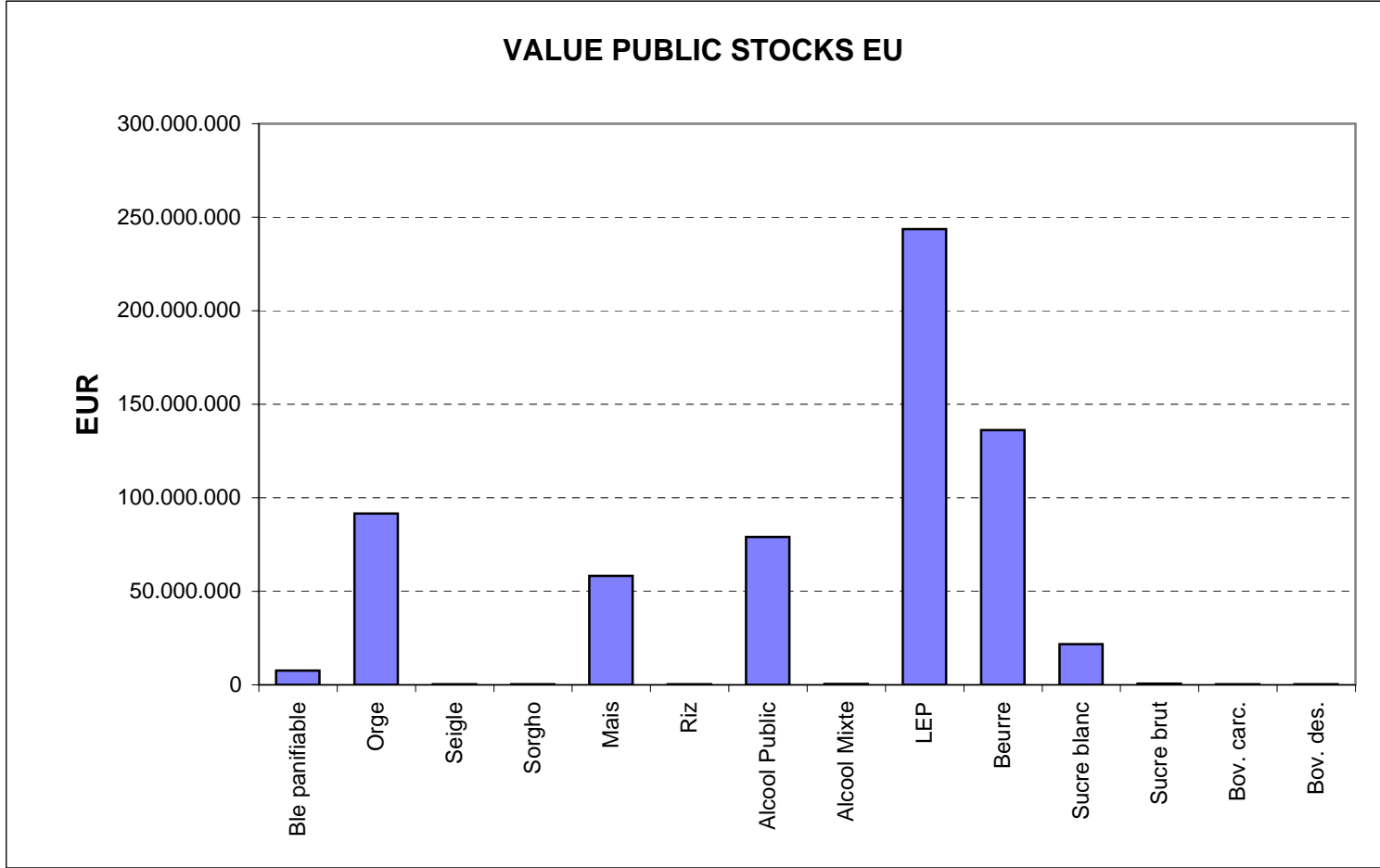
30-jun-09

AGRI I.4

J. FLORET tel. 53236

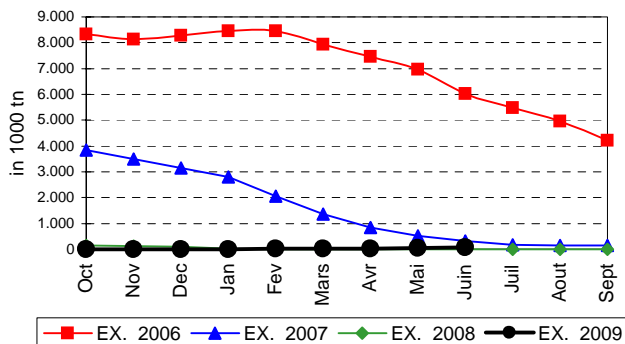
Produits		BE	BG	CZ	DK	DE	EE	IE	EL	ES	FR	IT	CY	LV	LT	LU	HU	MT	NL	OS	PL	PO	RO	SI	SK	FIN	SE	UK	TOTAL
BLE PANIF	quant.		3.013	31.984													25.107				1.382				9.171	497			71.155
	valeur		310.798	3.698.653														2.426.376				143.700				959.143	51.887		
ORGE	quant.			156.871		125.918	5.793								70.287		133.752			6.852	78.908				22.945	197.341	57.349		856.016
	valeur			18.275.420		13.062.748	607.983								7.290.889		14.188.410			711.698	8.215.851				2.388.350	20.610.324	6.001.619		91.353.291
SEIGLE	quant.																												
	valeur																												
SORGHO	quant.																502												502
	valeur																51.417												51.417
MAIS	quant.																451.306								110.404				561.711
	valeur																46.484.564								11.437.876				57.922.440
TOT.CER	quant.		3.013	188.855		125.918	5.793								70.287		610.668			6.852	80.290				142.521	197.838	57.349		1.489.384
RIZ	quant.																												
	valeur																												
ALC.P.	quant.								60.366	658.046	392.165	594.777	7.285				55.282					73.367							1.841.288
	valeur								2.584.868	27.835.353	16.459.150	25.527.843	332.865				2.345.604					3.591.328							78.677.012
ALC.M.	quant.										1.712	10.105																	11.817
	valeur										6.779	177.449																	184.229
TOT.ALC.	quant.								60.366	658.046	393.877	604.883	7.285				55.282					73.367							1.853.106
LEP	quant.	15.702		3.588		53.110	1.512	21.541		490					5.068				16.456		10.148	1.194			1.095	3.647	11.053		144.604
	valeur	26.601.526		6.743.060		90.111.016	2.543.936	34.258.790		823.200					8.514.868				27.804.885		17.062.857	2.025.557			1.855.423	6.192.266	18.768.588		243.305.972
BEURRE	quant.	3.245		527		9.938	1.194	14.545		8.665				1.501					11.541		2.333	3.673					4.563		61.724
	valeur	7.146.191		1.271.176		21.856.791	2.592.957	31.993.670		18.976.003					3.294.848				25.522.917		5.118.485	8.018.673					10.118.453		135.910.163
TOT L&B	quant.	18.947		4.115		63.047	2.706	36.086		9.155				6.569					27.997		12.480	4.867			1.095	3.647	15.616		206.328
S. BLANC	quant.	2.615		2.138				6.085				33.958													20.000				64.795
	valeur	764.711		720.950				1.770.309				11.436.580													6.744.000				21.436.550
S. BRUT	quant.																										1.661		1.661
	valeur																										401.616		401.616
TOT. SUC	quant.	2.615		2.138				6.085				33.958													20.000		1.661		66.456
BOV.QUA	quant.																												
	valeur																												
BOV.DES	quant.																												
	valeur																												
EQ. CARC	quant.																												
	valeur																												
TOT EQ	quant.																												
EU TOTAL	valeur	34.512.428	310.798	30.709.258		125.030.555	5.744.876	68.022.769	2.584.868	47.634.557	16.465.929	37.141.873	332.865	19.100.605		65.496.371		53.327.801	711.698	30.540.893	13.635.558				21.529.369	22.517.633	12.595.502	28.887.041	636.833.246

PUBLIC INTERVENTION STOCKS

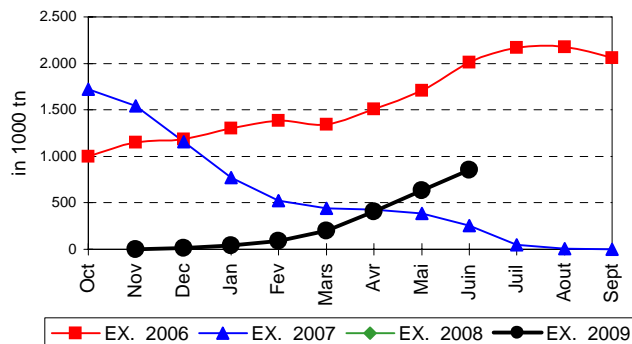


EVOLUTION IN QUANTITIES OF PUBLIC INTERVENTION STOCKS

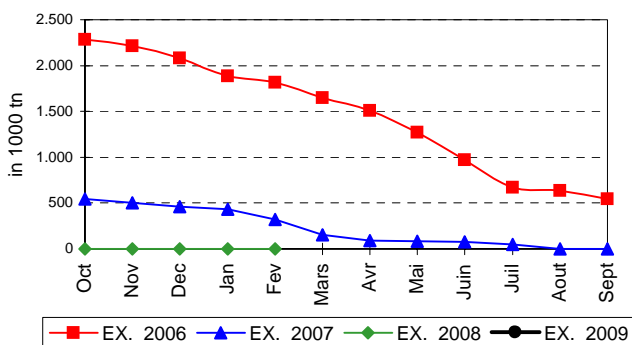
BLE TENDRE PANIFIABLE



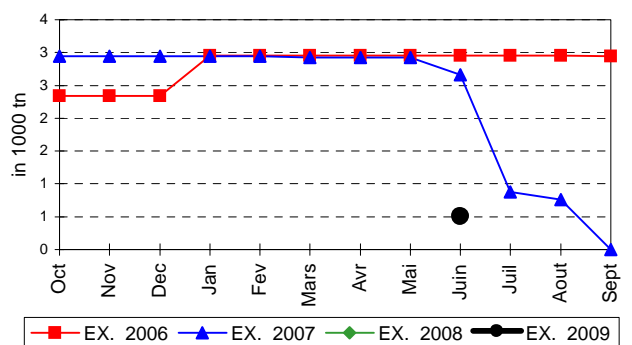
ORGE



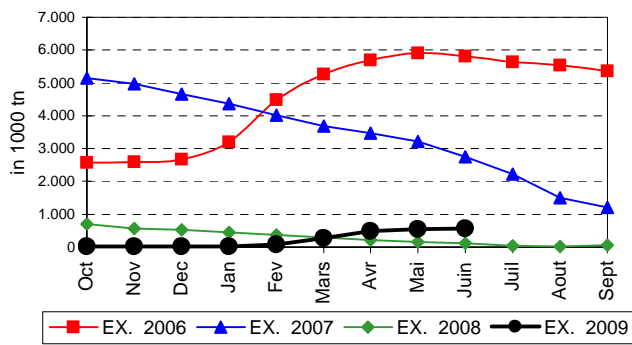
SEIGLE



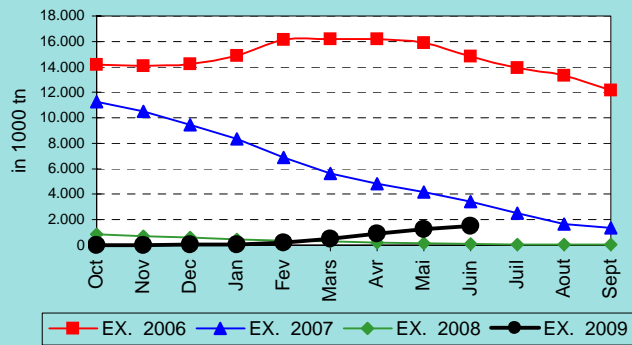
SORGHO



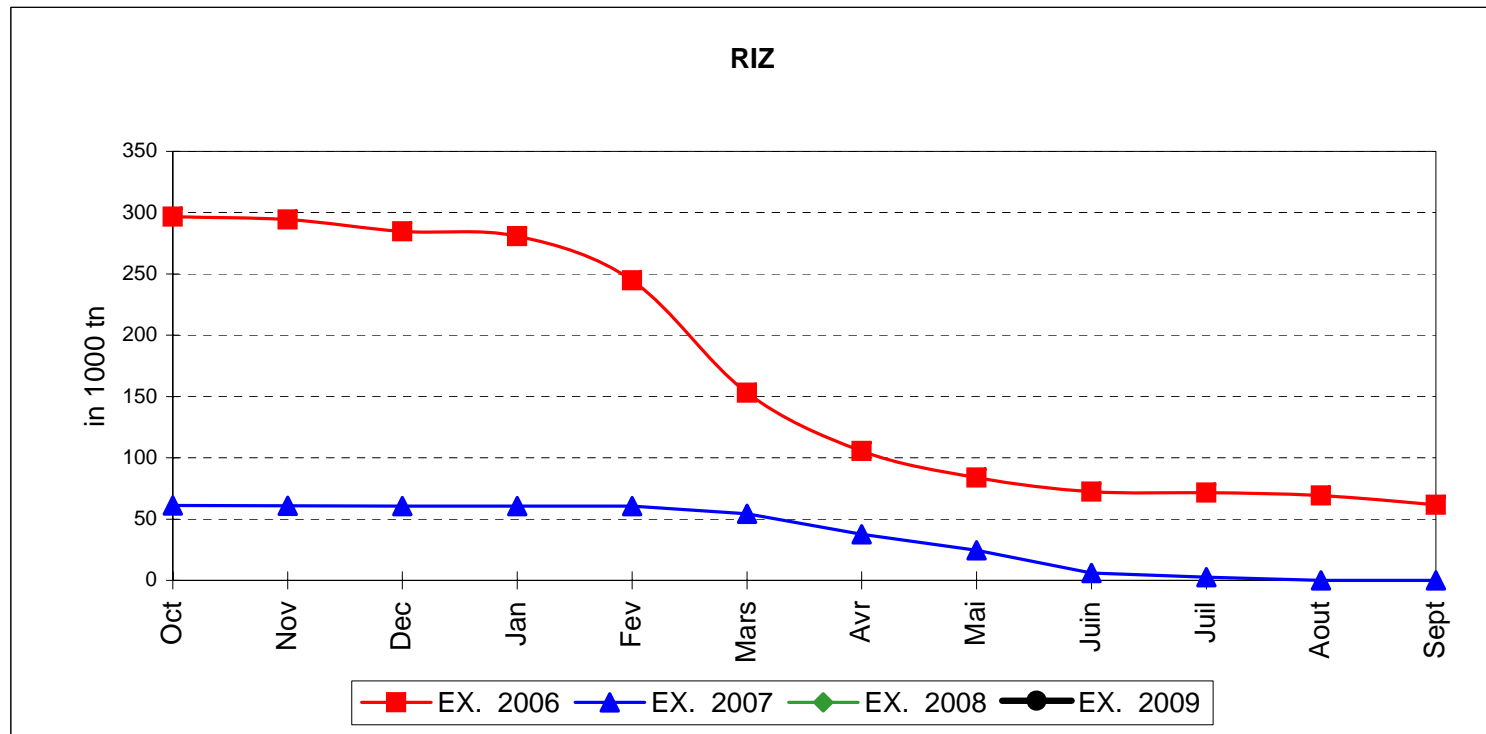
MAIS



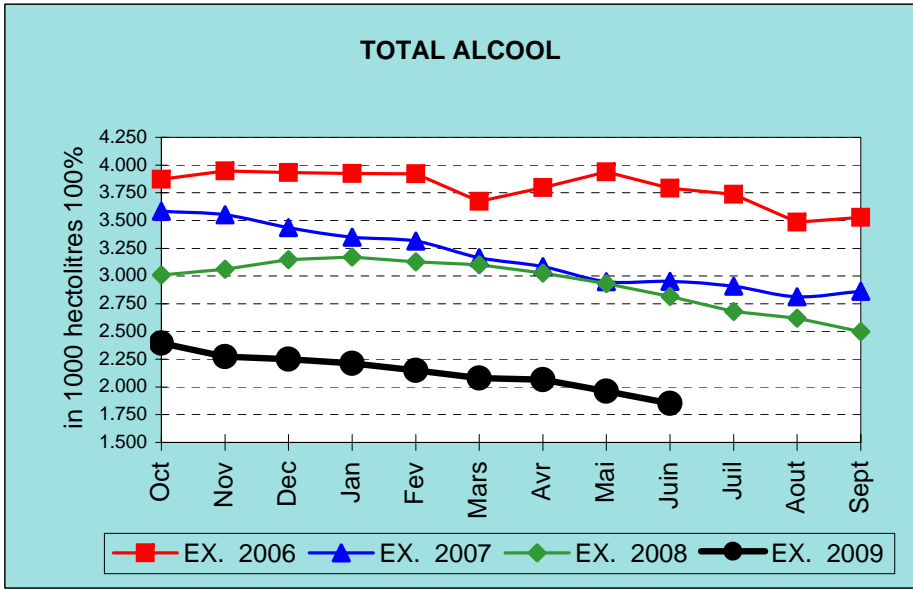
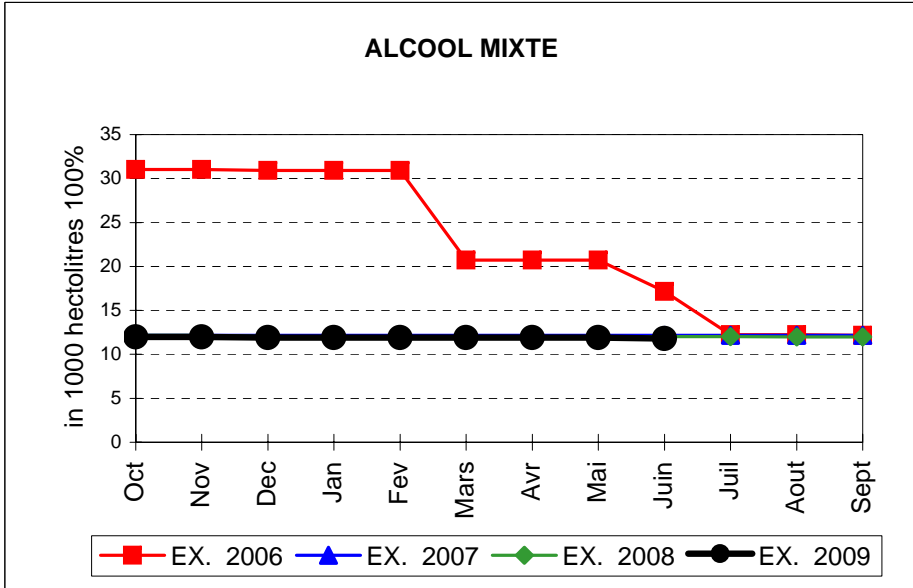
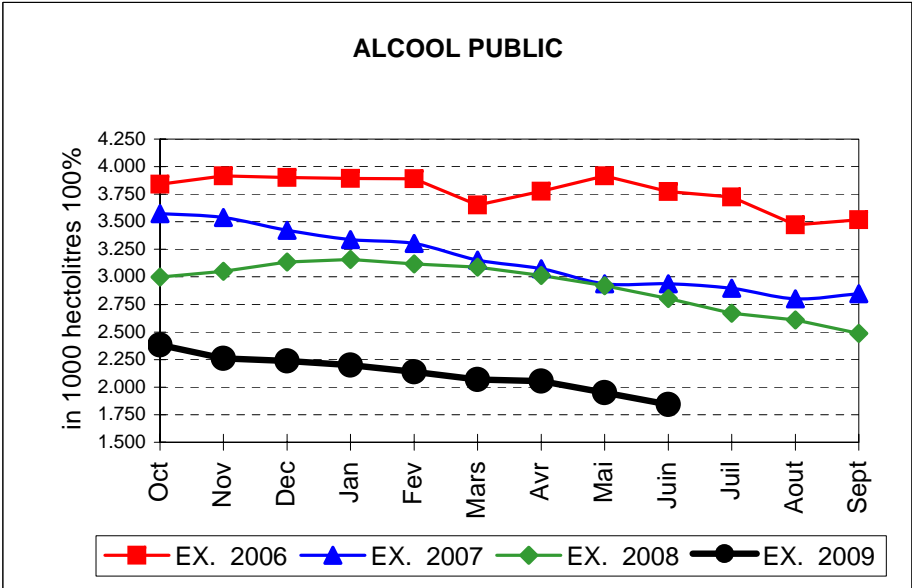
TOTAL CEREALES



EVOLUTION IN QUANTITIES OF PUBLIC INTERVENTION STOCKS

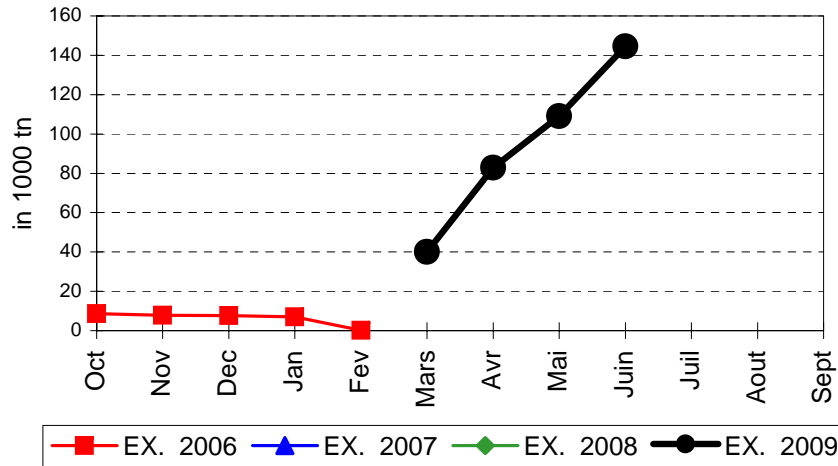


EVOLUTION IN QUANTITIES OF PUBLIC INTERVENTION STOCKS

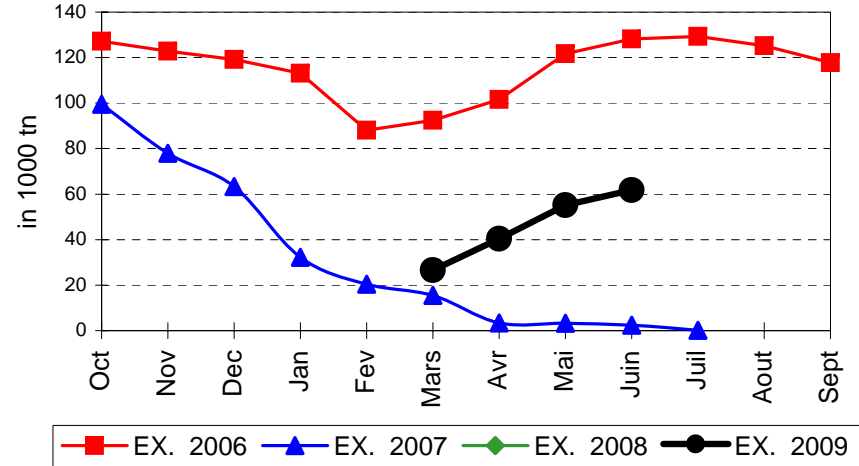


EVOLUTION IN QUANTITIES OF PUBLIC INTERVENTION STOCKS

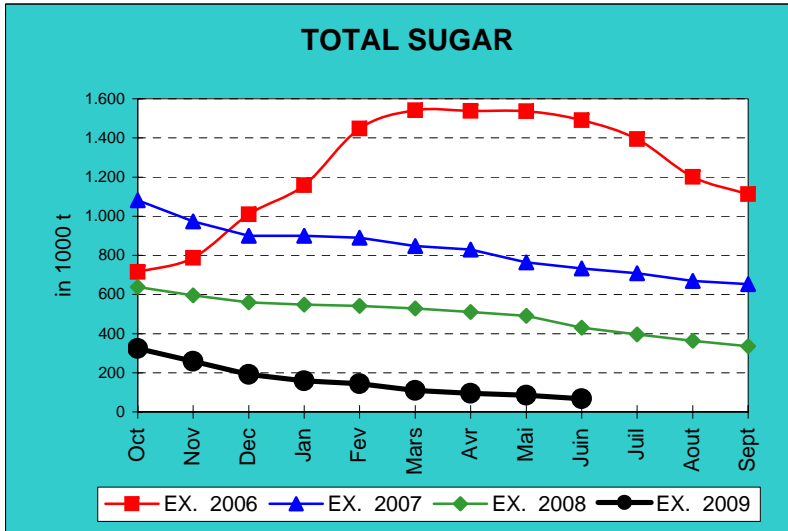
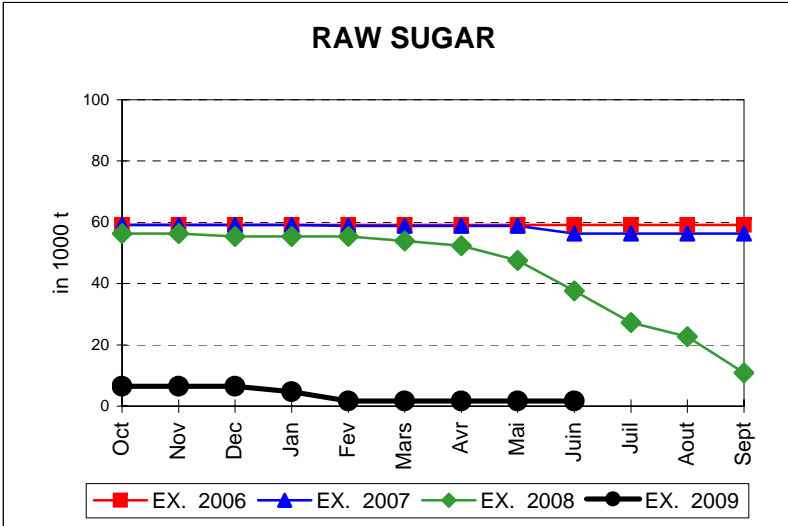
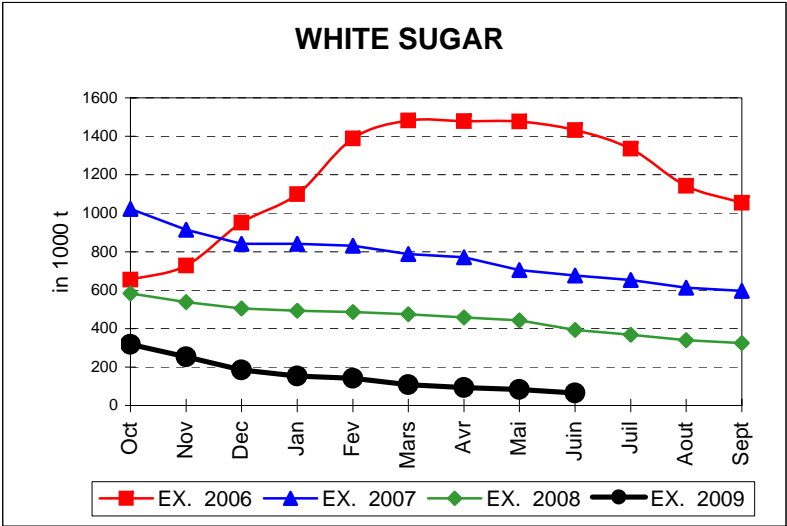
LAIT EN POUVRE



BEURRE

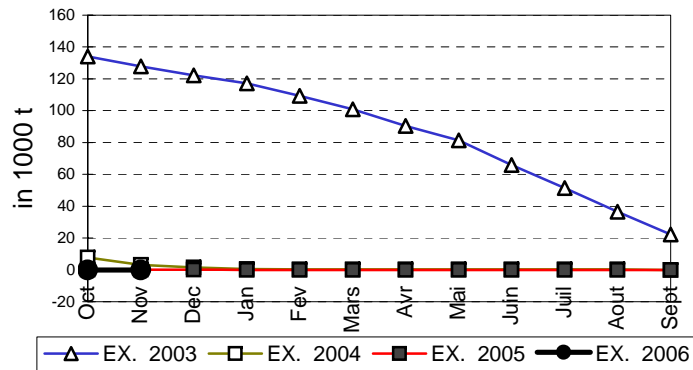


EVOLUTION IN QUANTITIES OF PUBLIC INTERVENTION STOCKS

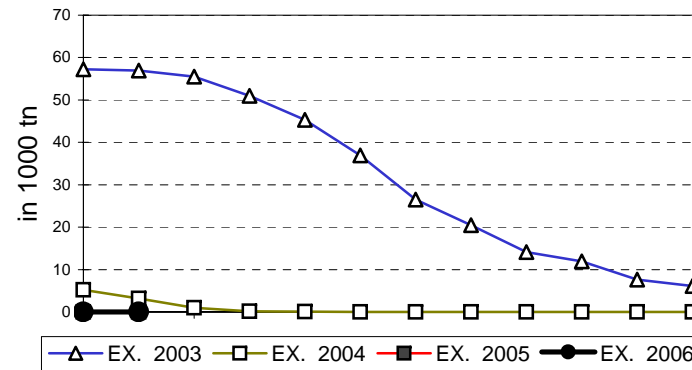


EVOLUTION IN QUANTITIES OF PUBLIC INTERVENTION STOCKS

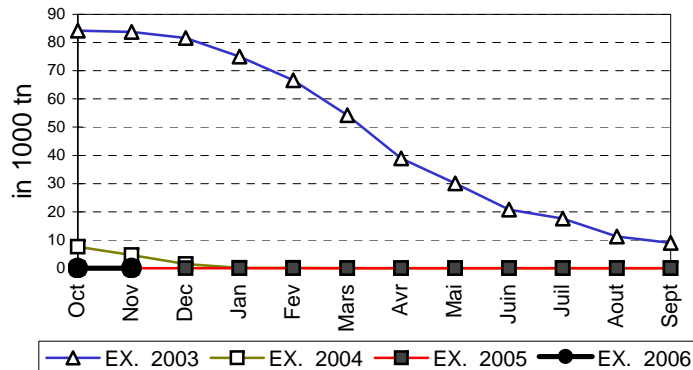
VIANDE BOVINE CARCASSES



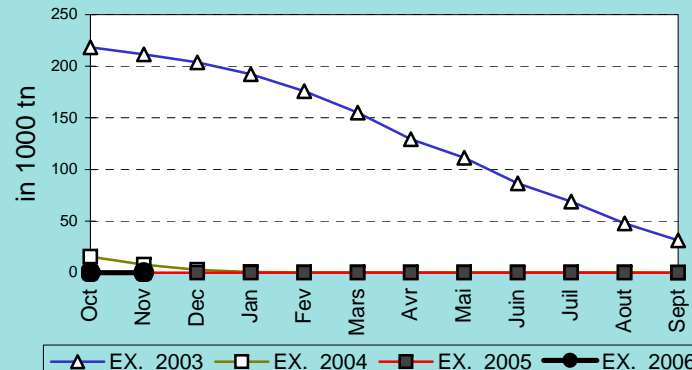
VIANDE BOVINE DESOSSEE



VIANDE DESOSSEE EN EQUIVALENT CARCASSES



TOTAL VIANDE EN EQUIVALENT CARCASSES



COMPARED WITH PREVIOUS MONTH

EU TOTAL	30-jun-09		31-may-09		CHANGE IN QTY		CHANGE IN VALUE	
	QUANTITY (tn or hl)	VALUE (in Euro)	QUANTITY (tn or hl)	VALUE (in Euro)	ABSOLUTE (tn or hl)	%	ABSOLUTE (in Euro)	%
CLICK TOTALS FOR GRAPHICS	(a)	(b)	(c)	(d)	(e)=(a)-(c)	(f)=(e)/(c)*%	(g)=(b)-(d)	(h)=(g)/(d)*%
Blé panifiable	71.155	7.590.557	61.478	6.781.346	9.677	16%	809.211	12%
Orge	856.016	91.353.291	634.068	67.698.523	221.948	35%	23.654.768	35%
Seigle								
Sorgho	502	51.417			502		51.417	
Mais	561.711	57.922.440	553.522	57.069.679	8.188	1%	852.761	1%
TOTAL CEREALES	1.489.384	156.917.705	1.249.068	131.549.548	240.316	19%	25.368.157	19%
TOTAL RIZ								
Alcool Public	1.841.288	78.677.012	1.949.911	83.282.790	-108.623	-6%	-4.605.778	-6%
Alcool Mixte	11.817	184.229	11.894	184.533	-77	-1%	-305	0%
TOTAL ALCOOL (HL 100%)	1.853.106	78.861.240	1.961.805	83.467.323	-108.700	-6%	-4.606.083	-6%
LEP	144.604	243.305.972	108.990	185.323.935	35.614	33%	57.982.037	31%
Beurre	61.724	135.910.163	55.115	121.357.689	6.609	12%	14.552.475	12%
TOTAL LAIT ET BEURRE	206.328	379.216.135	164.104	306.681.624	42.223	26%	72.534.511	24%
Sucre blanc	64.795	21.436.550	83.376	27.401.737	-18.581	-22%	-5.965.186	-22%
Sucre brut	1.661	401.616	1.661	401.616				
TOTAL SUCRE	66.456	21.838.166	85.037	27.803.352	-18.581	-22%	-5.965.186	-21%
Bov. carc.								
Bov. des.								
Eq. carc.								
TOTAL EQ. CARCASSES								
GRAND TOTAL		636.833.246		549.501.847			87.331.399	16%

SOURCE : The declarations of the Member States before controls.

COMPARED WITH PREVIOUS YEAR

EU TOTAL	30-jun-09		30-jun-08		CHANGE IN QTY		CHANGE IN VALUE	
	QUANTITY (tn or hl)	VALUE (in Euro)	QUANTITY (tn or hl)	VALUE (In Euro)	ABSOLUTE (tn or hl)	%	ABSOLUTE (in Euro)	%
CLICK TOTALS FOR GRAPHICS	(a)	(b)	(c)	(d)	(e)=(a)-(c)	(f)=(e)/(c)*%	(g)=(b)-(d)	(h)=(g)/(d)*%
Blé panifiable	71.155	7.590.557	610	60.298	70.544	11556%	7.530.259	12488%
Orge	856.016	91.353.291			856.016		91.353.291	
Seigle								
Sorgho	502	51.417			502		51.417	
Mais	561.711	57.922.440	114.666	11.259.037	447.045	390%	46.663.403	414%
TOTAL CEREALES	1.489.384	156.917.705	115.276	11.319.335	1.374.107	1192%	145.598.370	1286%
TOTAL RIZ								
Alcool Public	1.841.288	78.677.012	2.803.832	135.060.323	-962.544	-34%	-56.383.311	-42%
Alcool Mixte	11.817	184.229	12.015	186.670	-198	-2%	-2.441	-1%
TOTAL ALCOOL (HL 100%)	1.853.106	78.861.240	2.815.847	135.246.993	-962.741	-34%	-56.385.752	-42%
LEP	144.604	243.305.972			144.604		243.305.972	
Beurre	61.724	135.910.163			61.724		135.910.163	
TOTAL LAIT ET BEURRE	206.328	379.216.135			206.328		379.216.135	
Sucre blanc	64.795	21.436.550	393.051	142.897.284	-328.256	-84%	-121.460.733	-85%
Sucre brut	1.661	401.616	37.634	9.099.147	-35.973	-96%	-8.697.531	-96%
TOTAL SUCRE	66.456	21.838.166	430.685	151.996.431	-364.229	-85%	-130.158.265	-86%
Bov. carc.								
Bov. des.								
Eq. carc.								
TOTAL EQ. CARCASSES								
GRAND TOTAL		636.833.246		298.562.758			338.270.488	113%

SOURCE :

The declarations of the Member States before controls.

THE PUBLIC STORAGE FLASH REPORT AS AT									
30-jun-09									
ESPAÑA									
PRODUCTS	YEAR-TO-DATE		OPENING BALANCE		CHANGE IN QTY		CHANGE IN VALUE		
	QUANTITY (in tonnes or hl)	VALUE (in Euro)	QUANTITY (in tonnes or hl)	VALUE (in Euro)	ABSOLUTE (in tonnes or hl)	%	ABSOLUTE (in Euro)	%	
	(a)	(b)	(c)	(d)	(e)=(a)-(c)	(f)=(e)/(c)*%	(g)=(b)-(d)	(h)=(g)/(d)*%	
Ble panifiable									
Orge									
Seigle									
Sorgho									
Mais									
TOTAL CEREALES									
RIZ									
Alcool Public	658.046	27.835.353	820.230	34.532.971	-162.184	-20%	-6.697.618	-19%	
Alcool Mixte									
TOT. ALCOOL (HL)	658.046	27.835.353	820.230	34.532.971	-162.184	-20%	-6.697.618	-19%	
LEP	490	823.200			490		823.200		
Beurre	8.665	18.976.003			8.665		18.976.003		
TOTAL L & B	9.155	19.799.203			9.155		19.799.203		
Sucre Blanc									
Sucre Brut									
TOTAL SUCRE									
Bov. carc.									
Bov. des.									
Eq. carc.									
TOTAL EQ. CARC.									
GRAND TOTAL		47.634.557		34.532.971			13.101.586	38%	

30-jun-09

