

CHOOSE COUNTRY

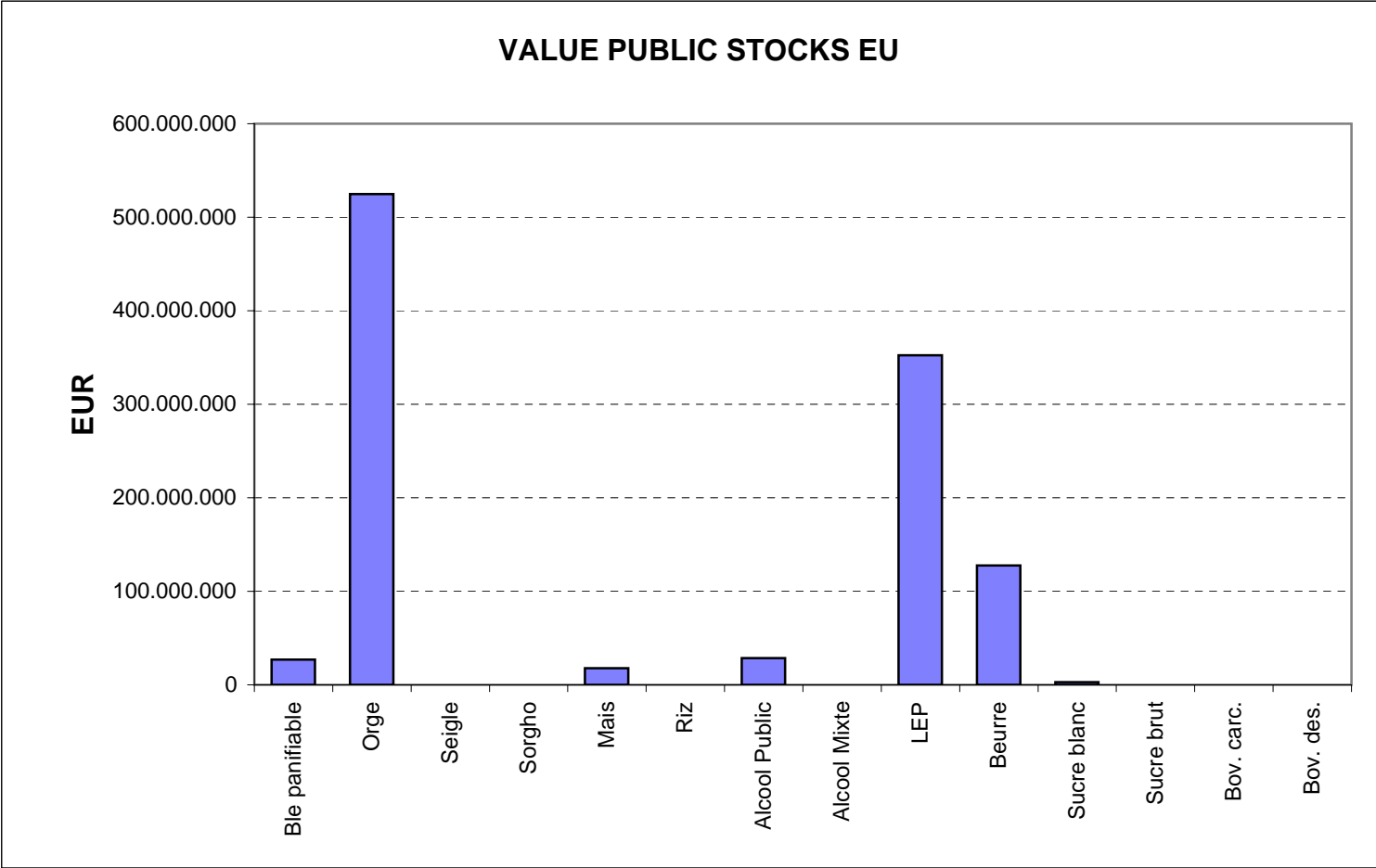
EU TOTAL	YEAR-TO-DATE		OPENING BALANCE (1)		CHANGE IN QTY		CHANGE IN VALUE	
	QUANTITY (tn or hl)	VALUE (in Euro)	QUANTITY (tn or hl)	VALUE (in Euro)	ABSOLUTE (tn or hl)	%	ABSOLUTE (in Euro)	%
CLICK TOTALS FOR GRAPHICS	(a)	(b)	(c)	(d)	(e)=(a)-(c)	(f)=(e)/(c)*%	(g)=(b)-(d)	(h)=(g)/(d)*%
Blé panifiable	262.506	27.001.279	76.703	7.911.093	185.803	242%	19.090.187	241%
Orge	5.229.198	530.389.476	925.385	94.445.665	4.303.813	465%	435.943.811	462%
Seigle								
Sorgho			502	50.812	-502	-100%	-50.812	-100%
Mais	176.007	17.829.616	556.111	56.510.040	-380.104	-68%	-38.680.424	-68%
TOTAL CEREALES	5.667.710	575.220.371	1.558.701	158.917.609	4.109.010	264%	416.302.762	262%
TOTAL RIZ								
Alcool Public	765.652	28.419.129	1.600.049	59.312.261	-834.397	-52%	-30.893.132	-52%
Alcool Mixte	1.173	4.655	11.067	180.503	-9.893	-89%	-175.848	-97%
TOTAL ALCOOL (HL 100%)	766.825	28.423.784	1.611.116	59.492.764	-844.291	-52%	-31.068.980	-52%
LEP	236.085	352.365.476	268.527	400.661.815	-32.441	-12%	-48.296.339	-12%
Beurre	58.594	127.602.665	78.688	171.396.018	-20.094	-26%	-43.793.353	-26%
TOTAL LAIT ET BEURRE	294.679	479.968.141	347.215	572.057.832	-52.535	-15%	-92.089.692	-16%
Sucre Blanc	8.384	2.712.532	34.080	10.975.054	-25.696	-75%	-8.262.522	-75%
Sucre Brut								
TOTAL SUCRE	8.384	2.712.532	34.080	10.975.054	-25.696	-75%	-8.262.522	-75%
Bov. carc.								
Bov. des.								
Eq. carc.								
TOTAL EQ. CARCASSES								
GRAND TOTAL		1.086.324.827		801.443.260			284.881.568	36%

SOURCE : The declarations of the Member States before controls.

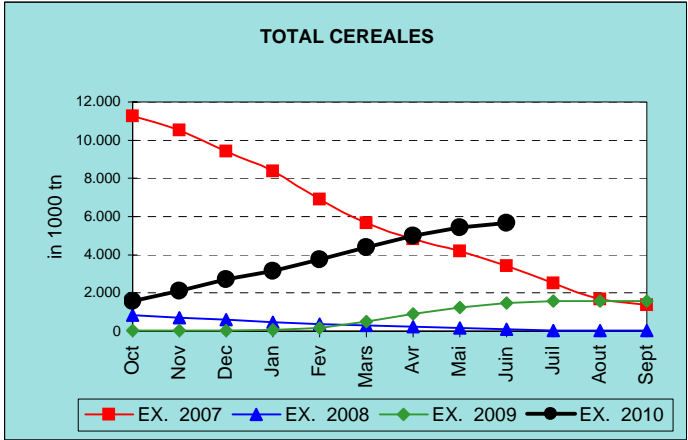
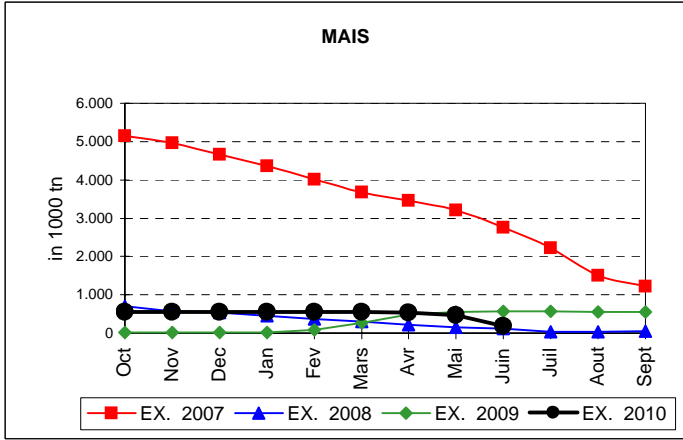
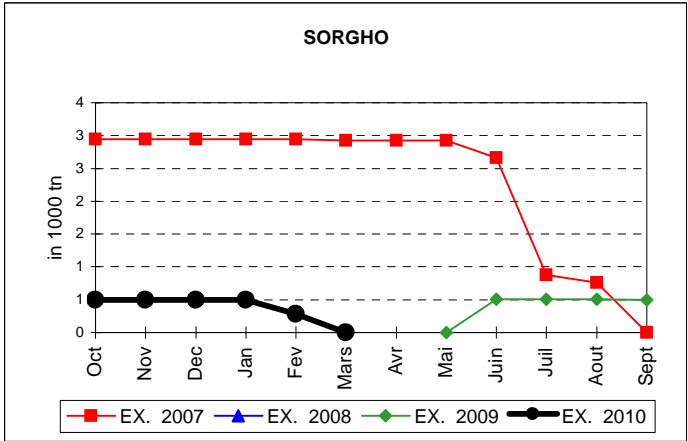
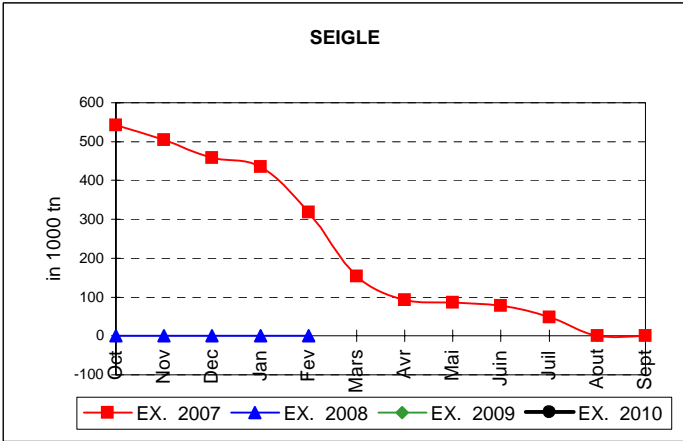
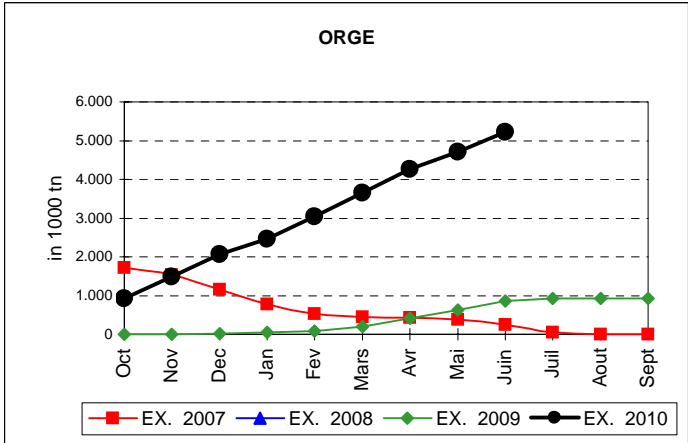
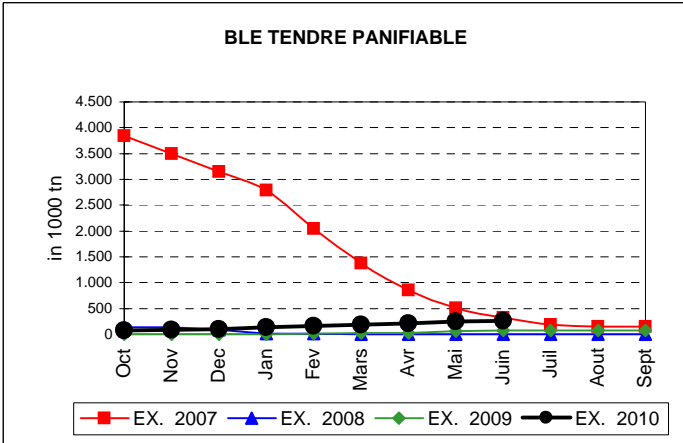
(1) Period 13/2009 annual declaration

Produits		BE	BG	CZ	DK	DE	EE	IE	EL	ES	FR	IT	CY	LV	LT	LU	HU	MT	NL	OS	PL	PO	RO	SI	SK	FIN	SE	UK	TOTAL
BLE PANIF	quant.		4.490	57.374											91	153.250					619				28.820	17.862			262.506
	valeur		454.993	6.022.513											8.867	15.698.944					62.615				2.926.112	1.827.235			27.001.279
ORGE	quant.	34.954	42.101	280.697	35.475	1.669.441	74.798				847.327			22.993	148.370	392.711			42.745	363.264			55.173	152.137	758.954	159.468	148.589	5.229.198	
	valeur	3.548.892	4.327.096	29.627.604	3.598.601	167.778.808	7.556.077				86.308.710			2.317.023	14.943.820	40.048.669				4.339.882	36.562.564			5.627.652	15.484.516	77.398.123	16.205.182	14.716.258	530.389.476
SEIGLE	quant.																												
SORGHO	quant.																												
MAIS	quant.																175.936								71			176.007	
	valeur																17.822.272								7.344			17.829.616	
TOT.CER	quant.	34.954	46.591	338.071	35.475	1.669.441	74.798				847.327			22.993	148.461	721.897			42.745	363.883			55.173	181.029	776.815	159.468	148.589	5.667.710	
RIZ	quant.																												
ALC.P.	quant.								60.269	422.272	105.071	43.755	7.219				54.936					72.130							765.652
	valeur								2.229.366	15.716.948	3.888.685	1.617.605	266.516				2.032.625					2.667.383							28.419.129
ALC.M.	quant.										1.173	1																1.173	
	valeur										4.644	11																4.655	
TOT.ALC.	quant.								60.269	422.272	106.244	43.755	7.219				54.936					72.130						766.825	
LEP	quant.	24.122		3.515		63.763	1.833	32.170		1.382	49.389				9.132			19.860		7.174	2.433				1.052	3.614	16.646	236.085	
	valeur	35.721.397		5.536.681		94.872.856	2.622.495	48.058.777		2.105.975	73.997.914				13.686.517			29.689.284		10.638.059	3.642.096				1.575.738	5.412.002	24.805.683	352.365.476	
BEURRE	quant.	1.432		527		6.193	1.153	13.440		5.943	9.492				1.693			8.658		633	5.079						4.352	58.594	
	valeur	3.120.894		1.200.445		13.499.140	2.355.675	29.297.071		12.947.123	20.681.076				3.689.732				18.874.174		1.380.940	11.071.712					9.484.683	127.602.665	
TOT L&B	quant.	25.554		4.042		69.955	2.986	45.610		7.325	58.881				10.824			28.518		7.807	7.512				1.052	3.614	20.998	294.679	
S. BLANC	quant.			9								8.375																8.384	
	valeur			3.052								2.709.480																2.712.532	
S. BRUT	quant.																												
TOT. SUC	quant.			9								8.375																8.384	
BOV.QUA	quant.																												
BOV.DES	quant.																												
EQ. CARC	quant.																												
TOT EQ	quant.																												
EU TOTAL	valeur	42.391.183	4.782.089	42.390.294	3.598.601	276.150.804	12.534.247	77.355.849	2.229.366	30.770.045	184.881.029	4.327.097	266.516	2.317.023	32.328.937	75.602.510		48.563.458	4.339.882	48.644.178	17.381.191	5.627.652			18.417.972	80.801.097	21.617.184	49.006.623	1.086.324.827

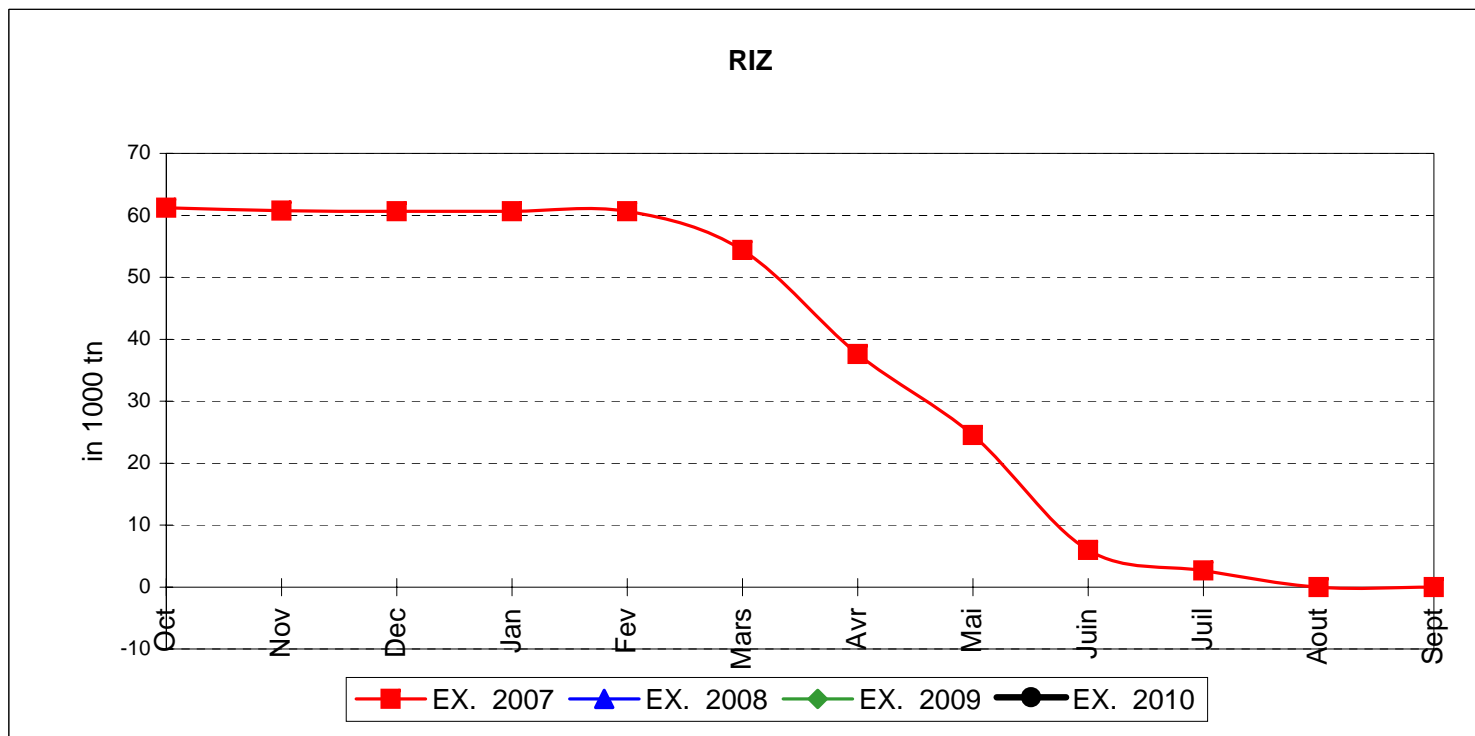
PUBLIC INTERVENTION STOCKS



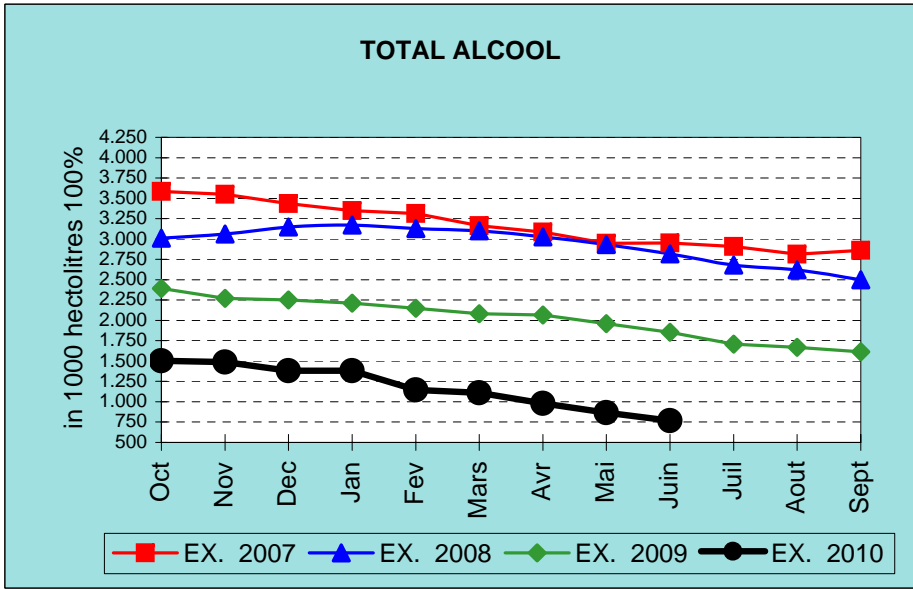
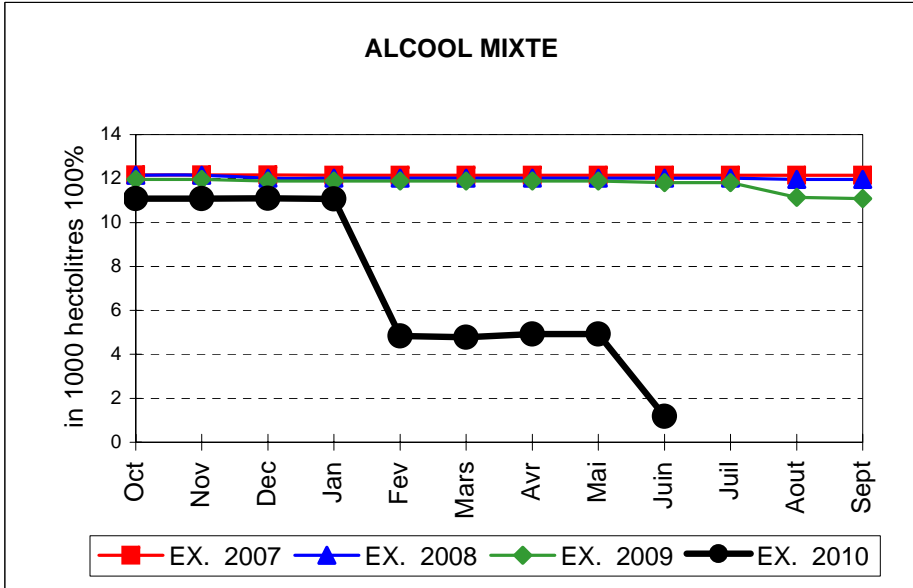
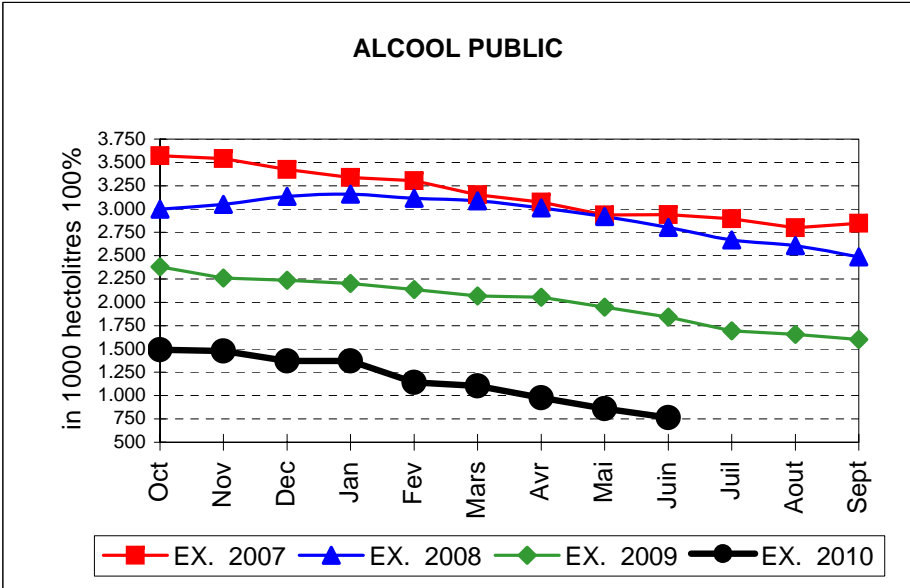
EVOLUTION IN QUANTITIES OF PUBLIC INTERVENTION STOCKS



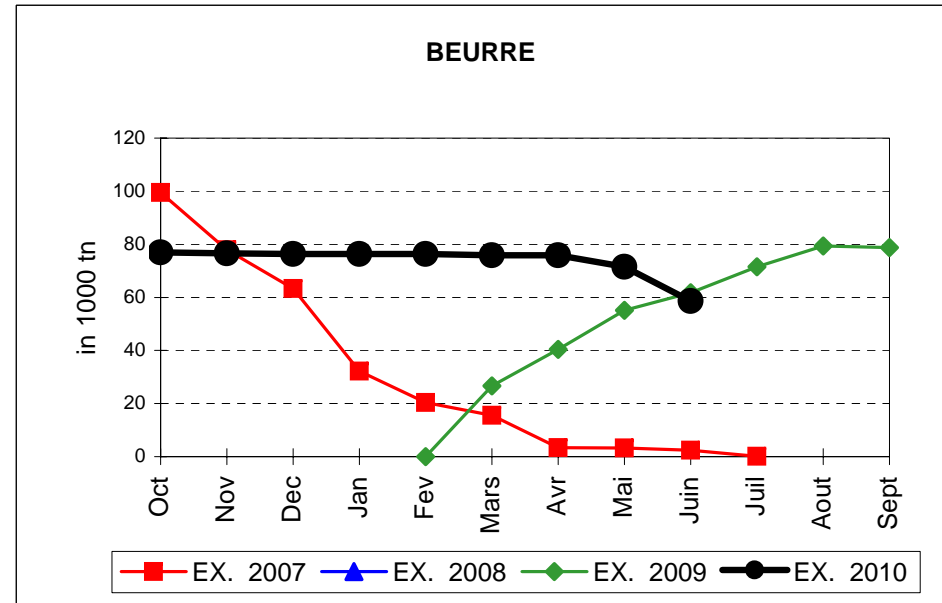
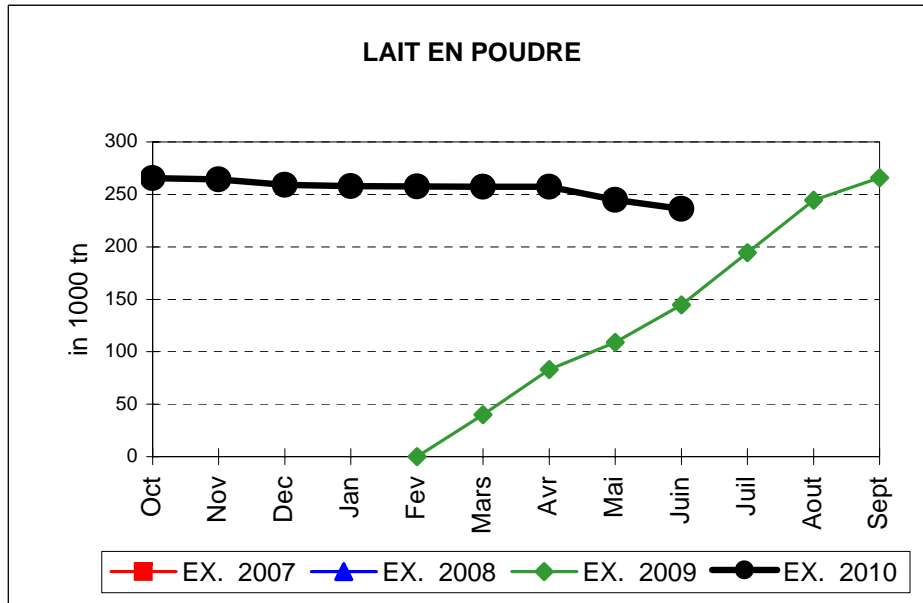
EVOLUTION IN QUANTITIES OF PUBLIC INTERVENTION STOCKS



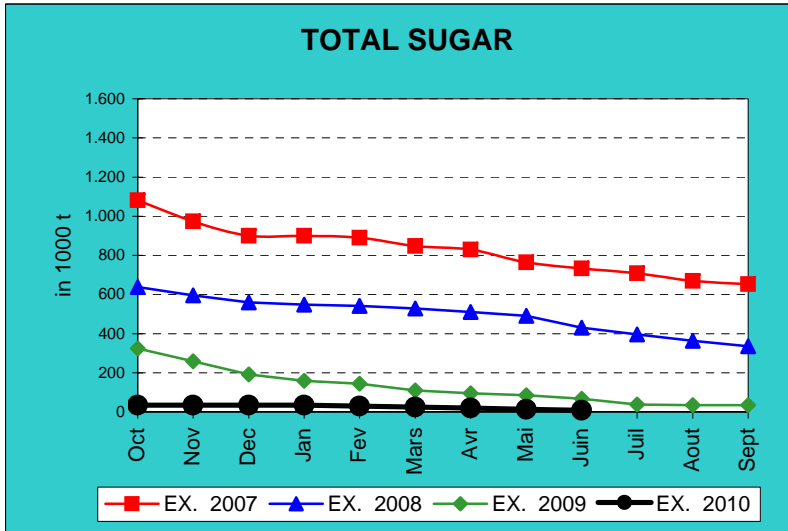
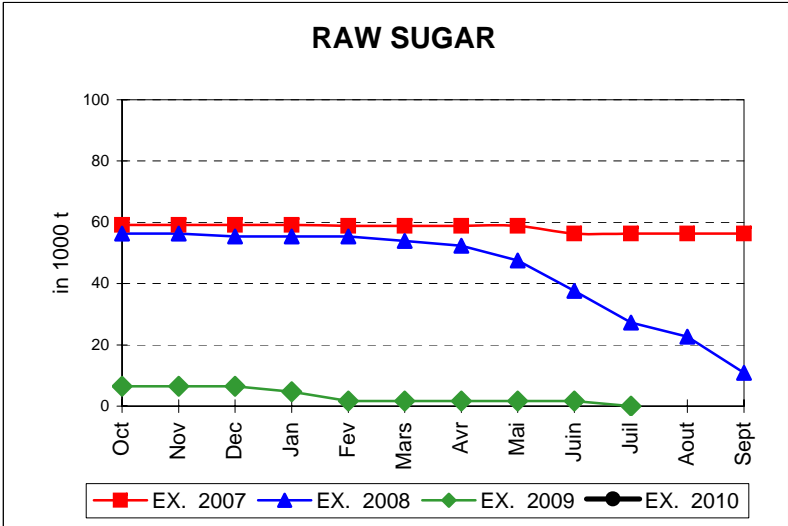
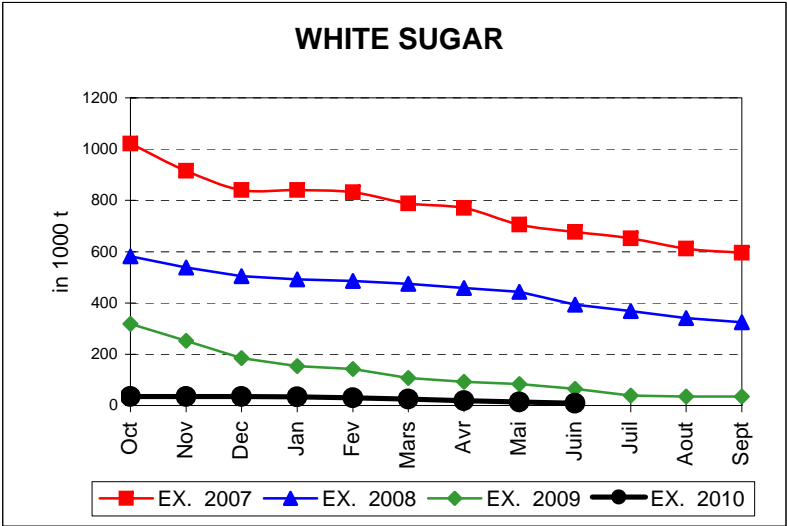
EVOLUTION IN QUANTITIES OF PUBLIC INTERVENTION STOCKS



EVOLUTION IN QUANTITIES OF PUBLIC INTERVENTION STOCKS

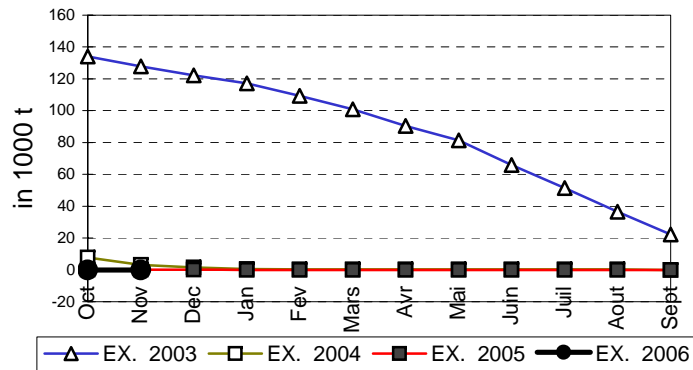


EVOLUTION IN QUANTITIES OF PUBLIC INTERVENTION STOCKS

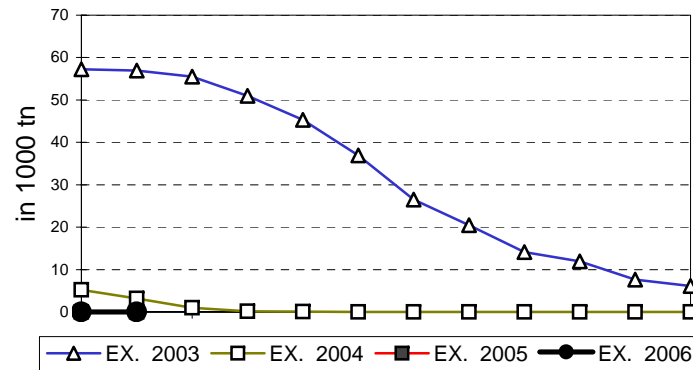


EVOLUTION IN QUANTITIES OF PUBLIC INTERVENTION STOCKS

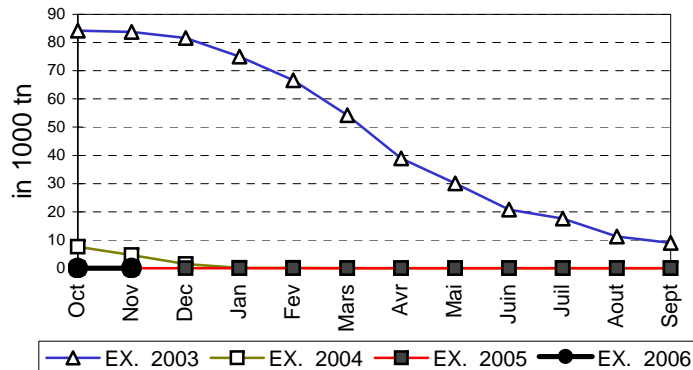
VIANDE BOVINE CARCASSES



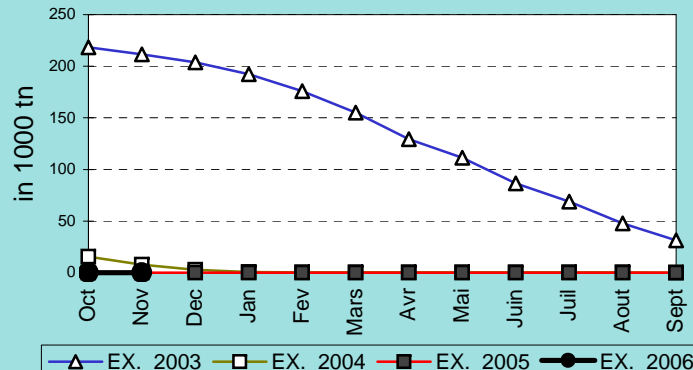
VIANDE BOVINE DESOSSEE



VIANDE DESOSSEE EN EQUIVALENT CARCASSES



TOTAL VIANDE EN EQUIVALENT CARCASSES



COMPARED WITH PREVIOUS MONTH

EU TOTAL	30-jun-10		31-may-10		CHANGE IN QTY		CHANGE IN VALUE	
	QUANTITY (tn or hl)	VALUE (in Euro)	QUANTITY (tn or hl)	VALUE (in Euro)	ABSOLUTE (tn or hl)	%	ABSOLUTE (in Euro)	%
CLICK TOTALS FOR GRAPHICS	(a)	(b)	(c)	(d)	(e)=(a)-(c)	(f)=(e)/(c)*%	(g)=(b)-(d)	(h)=(g)/(d)*%
Blé panifiable	262.506	27.001.279	250.298	25.778.153	12.207	5%	1.223.126	5%
Orge	5.229.198	530.389.476	4.710.797	477.713.686	518.400	11%	52.675.790	11%
Seigle								
Sorgho								
Mais	176.007	17.829.616	461.394	46.872.618	-285.387	-62%	-29.043.002	-62%
TOTAL CEREALES	5.667.710	575.220.371	5.422.490	550.364.457	245.220	5%	24.855.914	5%
TOTAL RIZ								
Alcool Public	765.652	28.419.129	860.942	31.953.107	-95.290	-11%	-3.533.979	-11%
Alcool Mixte	1.173	4.655	4.920	70.559	-3.747	-76%	-65.904	-93%
TOTAL ALCOOL (HL 100%)	766.825	28.423.784	865.862	32.023.667	-99.037	-11%	-3.599.883	-11%
LEP	236.085	352.365.476	244.847	365.435.257	-8.762	-4%	-13.069.781	-4%
Beurre	58.594	127.602.665	71.534	155.803.825	-12.940	-18%	-28.201.160	-18%
TOTAL LAIT ET BEURRE	294.679	479.968.141	316.381	521.239.082	-21.702	-7%	-41.270.941	-8%
Sucre blanc	8.384	2.712.532	13.226	4.246.524	-4.842	-37%	-1.533.992	-36%
Sucre brut								
TOTAL SUCRE	8.384	2.712.532	13.226	4.246.524	-4.842	-37%	-1.533.992	-36%
Bov. carc.								
Bov. des.								
Eq. carc.								
TOTAL EQ. CARCASSES								
GRAND TOTAL		1.086.324.827		1.107.873.729			-21.548.902	-2%

SOURCE : The declarations of the Member States before controls.

COMPARED WITH PREVIOUS YEAR

EU TOTAL	30-jun-10		30-jun-09		CHANGE IN QTY		CHANGE IN VALUE	
	QUANTITY (tn or hl)	VALUE (in Euro)	QUANTITY (tn or hl)	VALUE (In Euro)	ABSOLUTE (tn or hl)	%	ABSOLUTE (in Euro)	%
CLICK TOTALS FOR GRAPHICS	(a)	(b)	(c)	(d)	(e)=(a)-(c)	(f)=(e)/(c)*%	(g)=(b)-(d)	(h)=(g)/(d)*%
Blé panifiable	262.506	27.001.279	71.155	7.590.557	191.351	269%	19.410.723	256%
Orge	5.229.198	530.389.476	856.016	91.353.291	4.373.182	511%	439.036.185	481%
Seigle								
Sorgho			502	51.417	-502	-100%	-51.417	-100%
Mais	176.007	17.829.616	561.711	57.922.440	-385.704	-69%	-40.092.824	-69%
TOTAL CEREALES	5.667.710	575.220.371	1.489.384	156.917.705	4.178.327	281%	418.302.666	267%
TOTAL RIZ								
Alcool Public	765.652	28.419.129	1.841.288	78.677.012	-1.075.637	-58%	-50.257.883	-64%
Alcool Mixte	1.173	4.655	11.817	184.229	-10.644	-90%	-179.573	-97%
TOTAL ALCOOL (HL 100%)	766.825	28.423.784	1.853.106	78.861.240	-1.086.281	-59%	-50.437.457	-64%
LEP	236.085	352.365.476	144.604	243.305.972	91.482	63%	109.059.504	45%
Beurre	58.594	127.602.665	61.724	135.910.163	-3.130	-5%	-8.307.499	-6%
TOTAL LAIT ET BEURRE	294.679	479.968.141	206.328	379.216.135	88.352	43%	100.752.006	27%
Sucre blanc	8.384	2.712.532	64.795	21.436.550	-56.411	-87%	-18.724.019	-87%
Sucre brut			1.661	401.616	-1.661	-100%	-401.616	-100%
TOTAL SUCRE	8.384	2.712.532	66.456	21.838.166	-58.072	-87%	-19.125.635	-88%
Bov. carc.								
Bov. des.								
Eq. carc.								
TOTAL EQ. CARCASSES								
GRAND TOTAL		1.086.324.827		636.833.246			449.491.581	71%

SOURCE :

The declarations of the Member States before controls.

THE PUBLIC STORAGE FLASH REPORT AS AT						30-jun-10			
ESPAÑA									
PRODUCTS	YEAR-TO-DATE		OPENING BALANCE		CHANGE IN QTY		CHANGE IN VALUE		
	QUANTITY (in tonnes or hl)	VALUE (in Euro)	QUANTITY (in tonnes or hl)	VALUE (in Euro)	ABSOLUTE (in tonnes or hl)	%	ABSOLUTE (in Euro)	%	
	(a)	(b)	(c)	(d)	(e)=(a)-(c)	(f)=(e)/(c)*%	(g)=(b)-(d)	(h)=(g)/(d)*%	
Ble panifiable									
Orge									
Seigle									
Sorgho									
Mais									
TOTAL CEREALES									
RIZ									
Alcool Public	422.272	15.716.948	574.043	21.365.391	-151.771	-26%	-5.648.443	-26%	
Alcool Mixte									
TOT. ALCOOL (HL)	422.272	15.716.948	574.043	21.365.391	-151.771	-26%	-5.648.443	-26%	
LEP	1.382	2.105.975	1.603	2.442.752	-221	-14%	-336.777	-14%	
Beurre	5.943	12.947.123	9.335	20.336.778	-3.392	-36%	-7.389.655	-36%	
TOTAL L & B	7.325	15.053.097	10.936	22.779.530	-3.613	-33%	-7.726.432	-34%	
Sucre Blanc									
Sucre Brut									
TOTAL SUCRE									
Bov. carc.									
Bov. des.									
Eq. carc.									
TOTAL EQ. CARC.									
GRAND TOTAL		30.770.045		44.144.921			-13.374.876	-30%	

30-jun-10

