

CHOOSE COUNTRY

EU TOTAL	YEAR-TO-DATE		OPENING BALANCE (1)		CHANGE IN QTY		CHANGE IN VALUE	
	QUANTITY (tn or hl)	VALUE (in Euro)	QUANTITY (tn or hl)	VALUE (in Euro)	ABSOLUTE (tn or hl)	%	ABSOLUTE (in Euro)	%
CLICK TOTALS FOR GRAPHICS	(a)	(b)	(c)	(d)	(e)=(a)-(c)	(f)=(e)/(c)*%	(g)=(b)-(d)	(h)=(g)/(d)*%
Blé panifiable	38.946	3.943.028	234.577	23.710.769	-195.631	-83%	-19.767.741	-83%
Orge	627.350	63.766.589	5.326.162	540.451.972	-4.698.812	-88%	-476.685.383	-88%
Seigle								
Sorgho								
Mais			3.142	318.234	-3.142	-100%	-318.234	-100%
<b>TOTAL CEREALES</b>	<b>666.296</b>	<b>67.709.617</b>	<b>5.563.880</b>	<b>564.480.975</b>	<b>-4.897.584</b>	<b>-88%</b>	<b>-496.771.358</b>	<b>-88%</b>
<b>TOTAL RIZ</b>								
Alcool Public	61.690	2.097.186	628.630	21.369.957	-566.940	-90%	-19.272.771	-90%
Alcool Mixte			1.173	4.645	-1.173	-100%	-4.645	-100%
<b>TOTAL ALCOOL (HL 100%)</b>	<b>61.690</b>	<b>2.097.186</b>	<b>629.803</b>	<b>21.374.602</b>	<b>-568.113</b>	<b>-90%</b>	<b>-19.277.416</b>	<b>-90%</b>
LEP	134.738	200.867.348	197.223	294.161.988	-62.486	-32%	-93.294.640	-32%
Beurre	1.435	3.103.957	1.545	3.343.770	-110	-7%	-239.813	-7%
<b>TOTAL LAIT ET BEURRE</b>	<b>136.173</b>	<b>203.971.305</b>	<b>198.769</b>	<b>297.505.758</b>	<b>-62.596</b>	<b>-31%</b>	<b>-93.534.453</b>	<b>-31%</b>
Sucre Blanc			9	3.052	-9	-100%	-3.052	-100%
Sucre Brut								
<b>TOTAL SUCRE</b>			<b>9</b>	<b>3.052</b>	<b>-9</b>	<b>-100%</b>	<b>-3.052</b>	<b>-100%</b>
Bov. carc.								
Bov. des.								
Eq. carc.								
<b>TOTAL EQ. CARCASSES</b>								
<b>GRAND TOTAL</b>		<b>273.778.109</b>		<b>883.364.387</b>			<b>-609.586.278</b>	<b>-69%</b>

SOURCE : The declarations of the Member States before controls.

(1) Period 13/2010 annual declaration

quantities are expressed in  
tonnes (alcohol in hl 100%)

ACCOUNTING VALUE OF THE PUBLIC INTERVENTION STOCKS AS AT :  
(BEFORE THE COMPLEMENTARY DEPRECIATION)

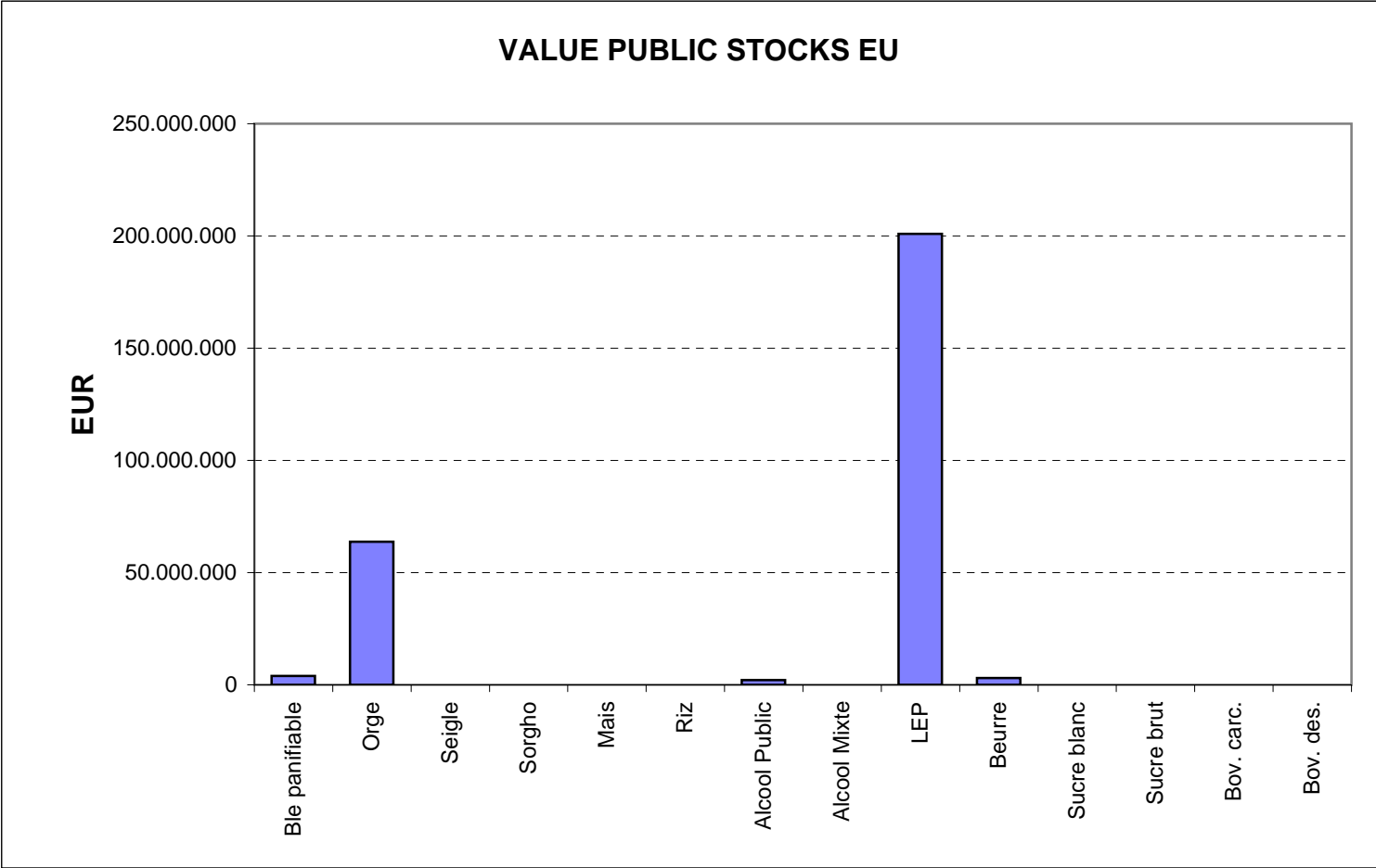
30-jun-11

AGRI I.4

J. FLORET tel. 53236

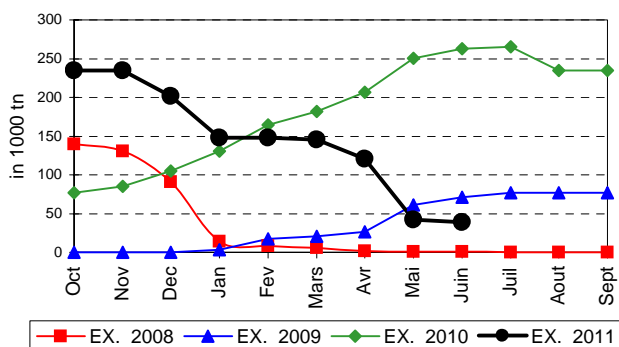
Produits		BE	BG	CZ	DK	DE	EE	IE	EL	ES	FR	IT	CY	LV	LT	LU	HU	MT	NL	OS	PL	PO	RO	SI	SK	FIN	SE	UK	TOTAL
BLE PANIF	quant.		1.076														37.574								295				38.946
	valeur		106.768														3.806.296								29.965				3.943.028
ORGE	quant.	9	12.610	22.948		131.409	7.562				110.525			2.438	11.518		112.603		594	31.433					17.279	88.515	67.246	10.659	627.350
	valeur	916	1.302.378	2.419.851		13.206.643	766.712				11.249.220			245.724	1.160.316		11.485.519		60.353	3.169.404					1.758.824	9.042.726	6.842.294	1.055.709	63.766.589
SEIGLE	quant.																												
	valeur																												
SORGHO	quant.																												
	valeur																												
MAIS	quant.																												
	valeur																												
TOT.CER	quant.	9	13.686	22.948		131.409	7.562				110.525			2.438	11.518		150.178		594	31.433					17.574	88.515	67.246	10.659	666.296
RIZ	quant.																												
	valeur																												
ALC.P.	quant.												7.112				54.578												61.690
	valeur											241.520					1.855.666												2.097.186
ALC.M.	quant.																												
	valeur																												
TOT.ALC.	quant.												7.112				54.578												61.690
LEP	quant.	10.678		426		47.603	1.077	29.651			20.401						3.898		3.527	1.780	607				298	191	14.601	134.738	
	valeur	15.812.479		671.379		70.828.132	1.541.006	44.296.042			30.566.223						5.841.798		5.272.168	2.639.071	909.158				445.610	285.723	21.758.559	200.867.348	
BEURRE	quant.						182										1.254												1.435
	valeur						371.083										2.732.875												3.103.957
TOT L&B	quant.	10.678		426		47.603	1.259	29.651			20.401					5.151			3.527	1.780	607				298	191	14.601	136.173	
S. BLANC	quant.																												
	valeur																												
S. BRUT	quant.																												
	valeur																												
TOT. SUC	quant.																												
BOV.QUA	quant.																												
	valeur																												
BOV.DES	quant.																												
	valeur																												
EQ. CARC	quant.																												
TOT EQ	quant.																												
EU TOTAL	valeur	15.813.395	1.409.146	3.091.230		84.034.774	2.678.801	44.296.042		1.409.146	41.815.443		241.520	245.724	9.734.988	17.147.481		5.272.168	60.353	5.808.475	909.158				1.788.788	9.488.337	7.128.017	22.814.268	273.778.109

**PUBLIC INTERVENTION STOCKS**

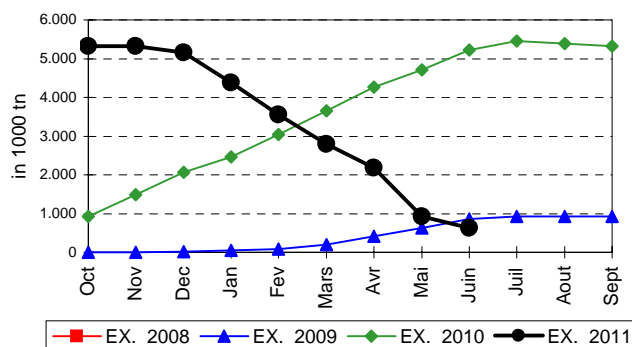


## EVOLUTION IN QUANTITIES OF PUBLIC INTERVENTION STOCKS

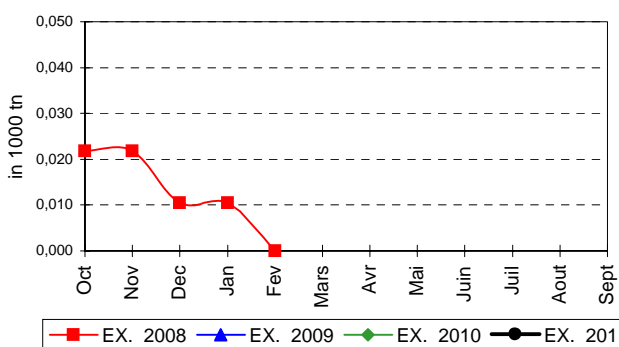
### BLE TENDRE PANIFIABLE



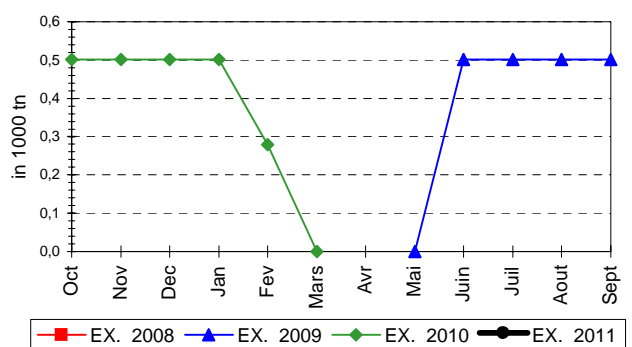
### ORGE



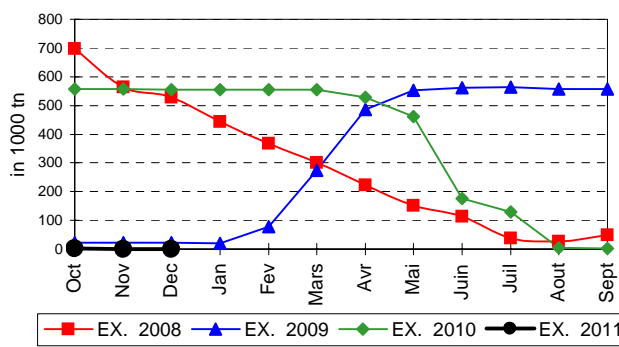
### SEIGLE



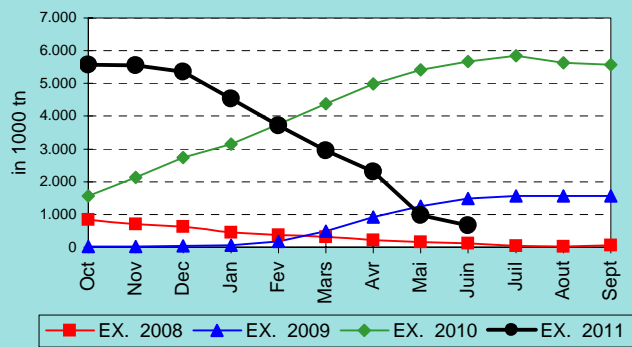
### SORGHO



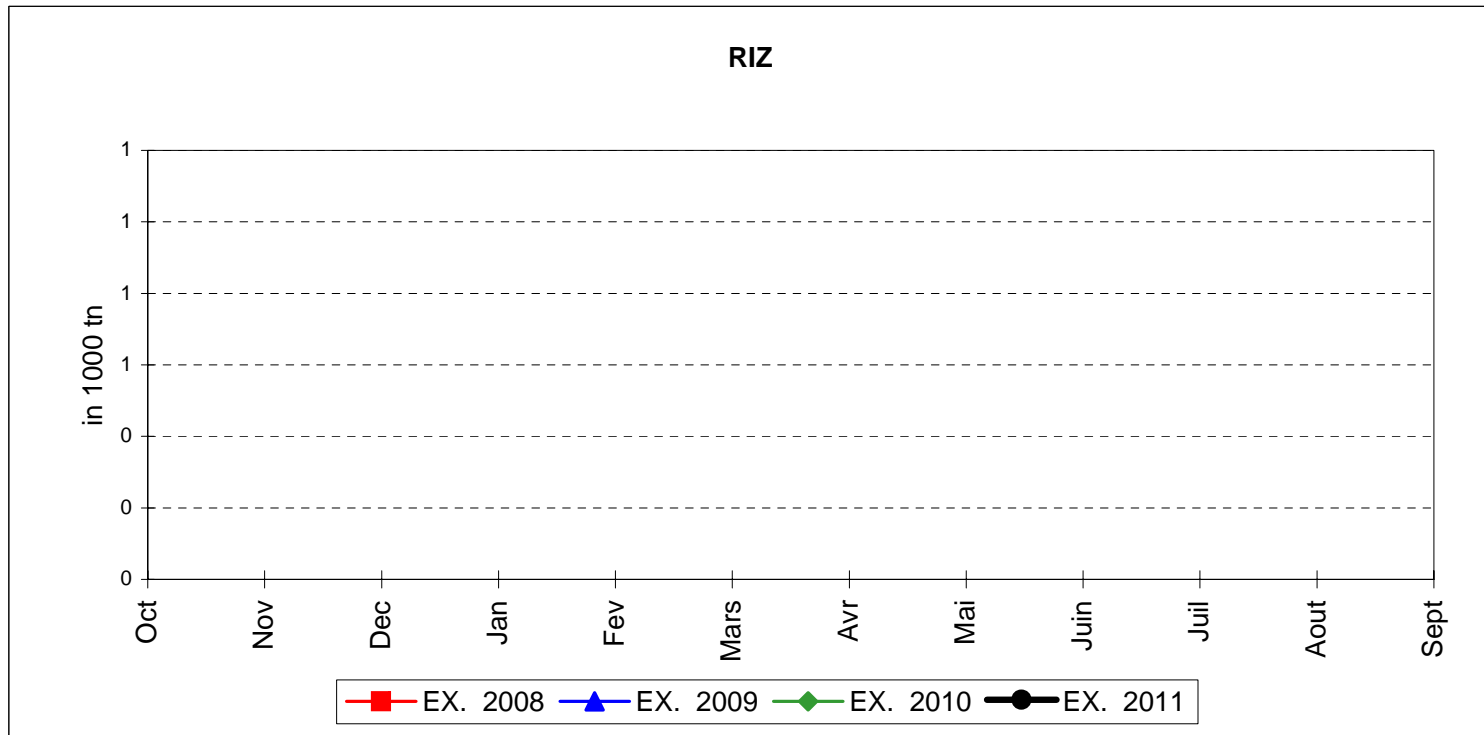
### MAIS



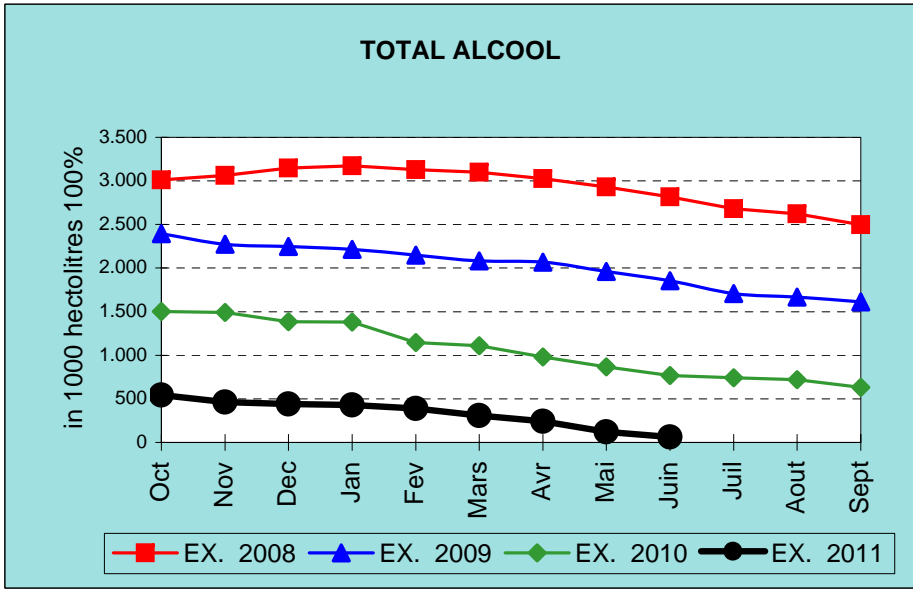
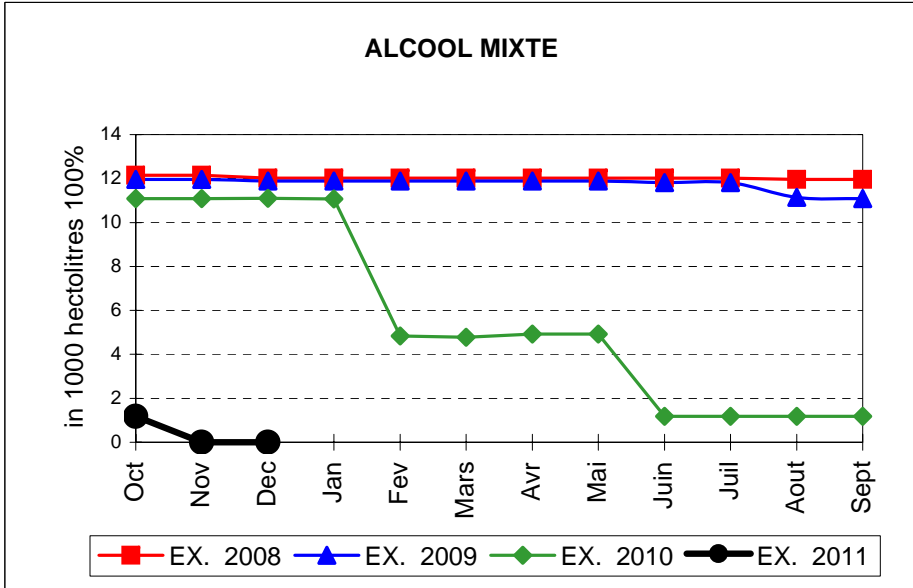
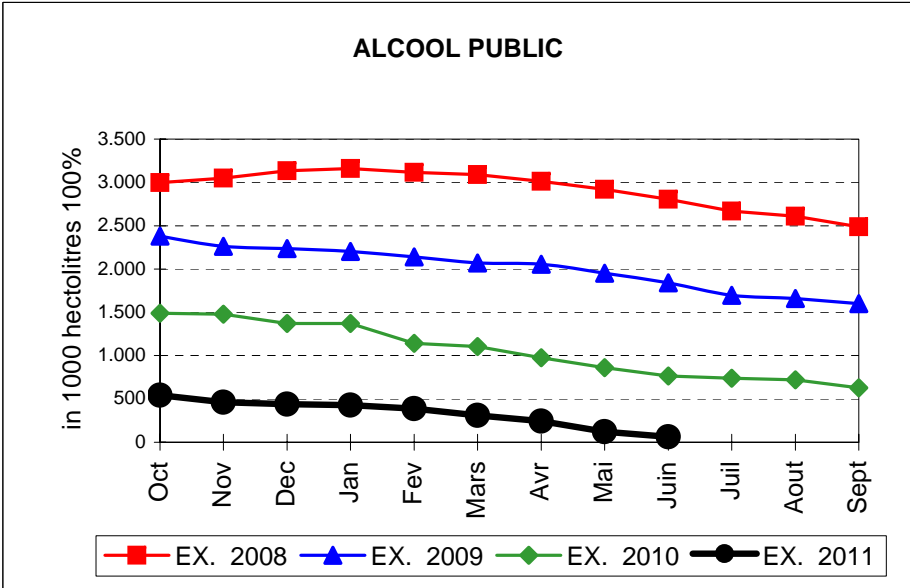
### TOTAL CEREALES



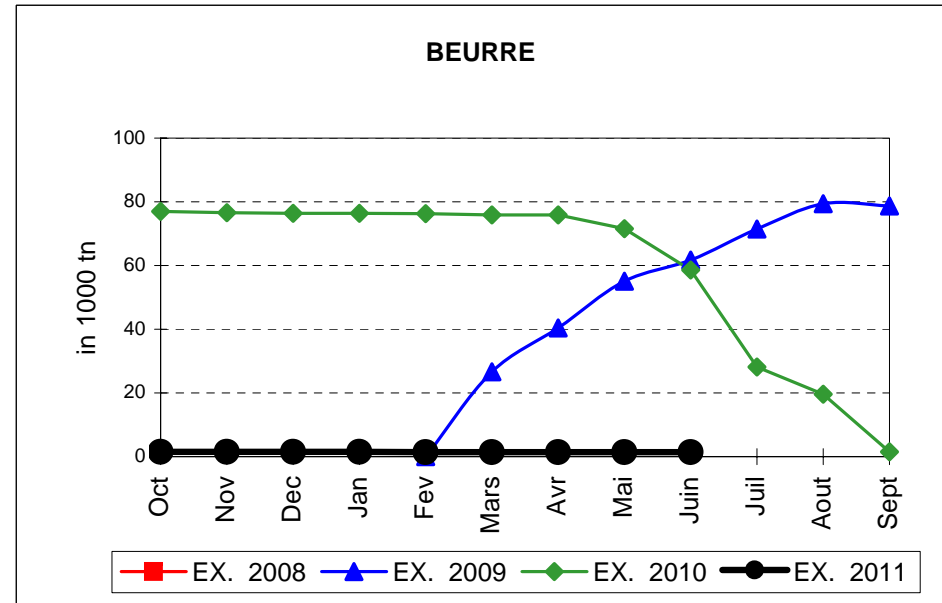
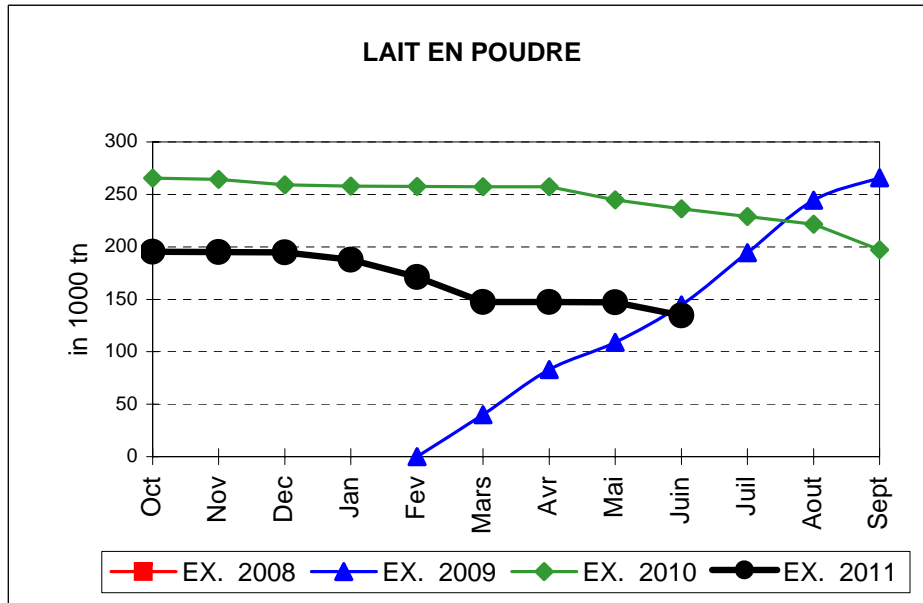
## EVOLUTION IN QUANTITIES OF PUBLIC INTERVENTION STOCKS



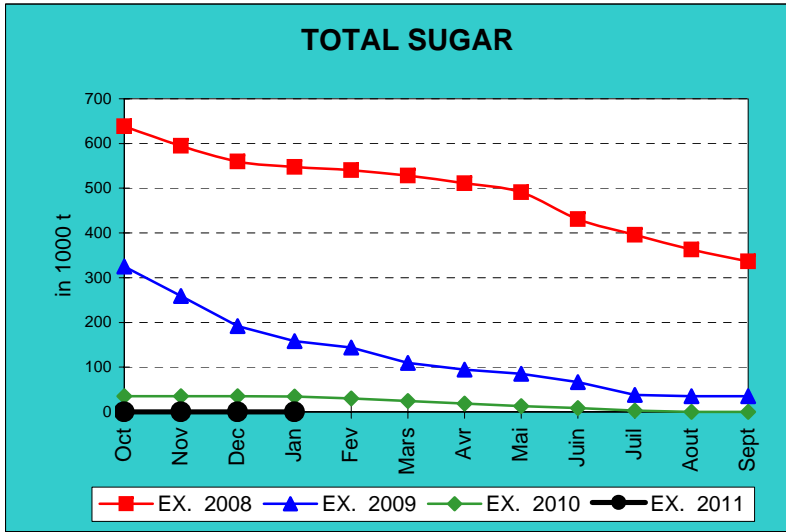
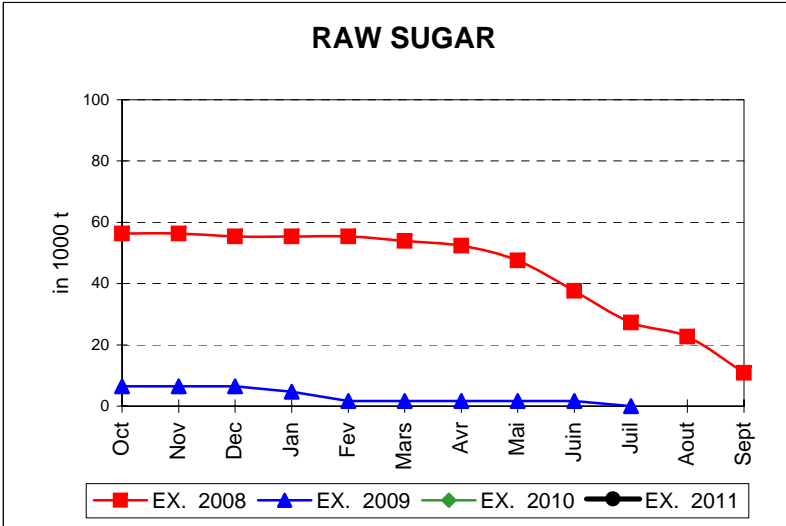
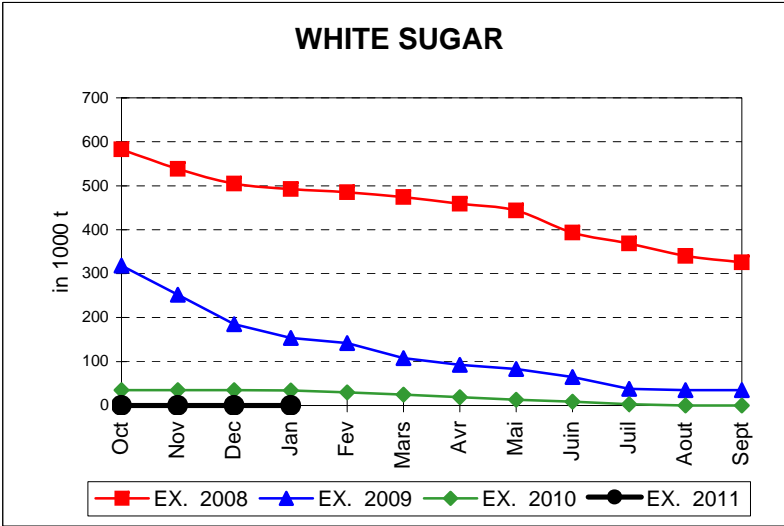
# EVOLUTION IN QUANTITIES OF PUBLIC INTERVENTION STOCKS



## EVOLUTION IN QUANTITIES OF PUBLIC INTERVENTION STOCKS



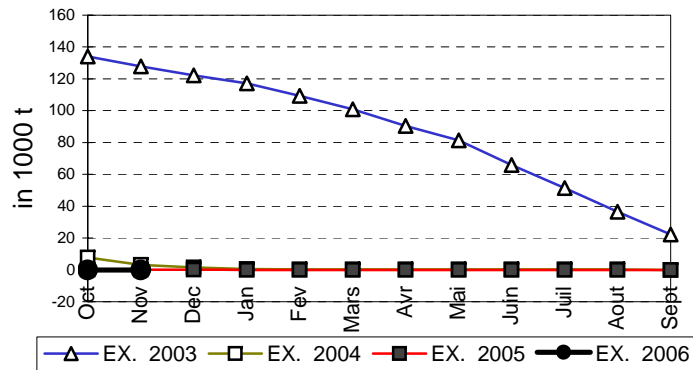
# EVOLUTION IN QUANTITIES OF PUBLIC INTERVENTION STOCKS



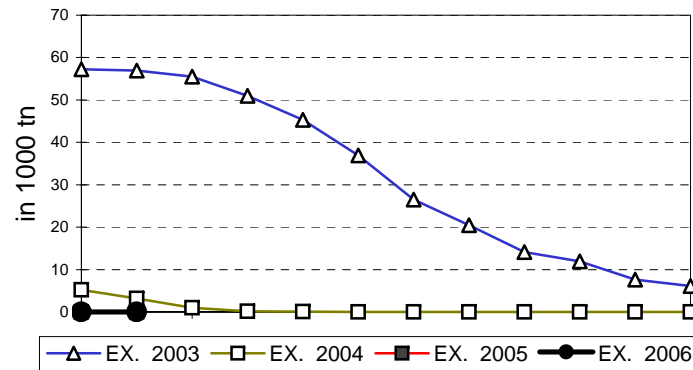


## EVOLUTION IN QUANTITIES OF PUBLIC INTERVENTION STOCKS

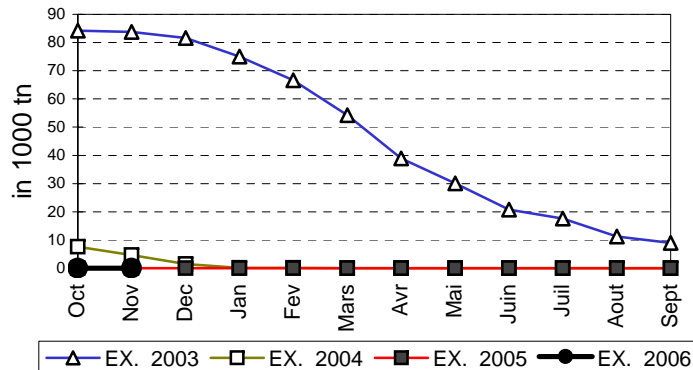
### VIANDE BOVINE CARCASSES



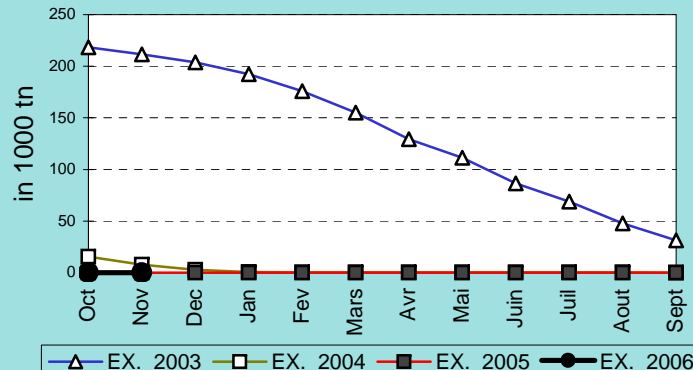
### VIANDE BOVINE DESOSSEE



### VIANDE DESOSSEE EN EQUIVALENT CARCASSES



### TOTAL VIANDE EN EQUIVALENT CARCASSES



## COMPARED WITH PREVIOUS MONTH

EU TOTAL	30-jun-11		31-may-11		CHANGE IN QTY		CHANGE IN VALUE	
	QUANTITY (tn or hl)	VALUE (in Euro)	QUANTITY (tn or hl)	VALUE (in Euro)	ABSOLUTE (tn or hl)	%	ABSOLUTE (in Euro)	%
CLICK TOTALS FOR GRAPHICS	(a)	(b)	(c)	(d)	(e)=(a)-(c)	(f)=(e)/(c)*%	(g)=(b)-(d)	(h)=(g)/(d)*%
Blé panifiable	38.946	3.943.028	42.049	4.258.109	-3.103	-7%	-315.081	-7%
Orge	627.350	63.766.589	929.127	94.424.924	-301.777	-32%	-30.658.335	-32%
Seigle								
Sorgho								
Mais								
<b>TOTAL CEREALES</b>	<b>666.296</b>	<b>67.709.617</b>	<b>971.176</b>	<b>98.683.033</b>	<b>-304.880</b>	<b>-31%</b>	<b>-30.973.416</b>	<b>-31%</b>
<b>TOTAL RIZ</b>								
Alcool Public	61.690	2.097.186	122.170	4.153.471	-60.480	-50%	-2.056.285	-50%
Alcool Mixte								
<b>TOTAL ALCOOL (HL 100%)</b>	<b>61.690</b>	<b>2.097.186</b>	<b>122.170</b>	<b>4.153.471</b>	<b>-60.480</b>	<b>-50%</b>	<b>-2.056.285</b>	<b>-50%</b>
LEP	134.738	200.867.348	146.982	219.139.617	-12.244	-8%	-18.272.269	-8%
Beurre	1.435	3.103.957	1.435	3.103.957				
<b>TOTAL LAIT ET BEURRE</b>	<b>136.173</b>	<b>203.971.305</b>	<b>148.417</b>	<b>222.243.574</b>	<b>-12.244</b>	<b>-8%</b>	<b>-18.272.269</b>	<b>-8%</b>
Sucre blanc								
Sucre brut								
<b>TOTAL SUCRE</b>								
Bov. carc.								
Bov. des.								
Eq. carc.								
<b>TOTAL EQ. CARCASSES</b>								
<b>GRAND TOTAL</b>		<b>273.778.109</b>		<b>325.080.078</b>			<b>-51.301.970</b>	<b>-16%</b>

SOURCE : The declarations of the Member States before controls.

## COMPARED WITH PREVIOUS YEAR

EU TOTAL	30-jun-11		30-jun-10		CHANGE IN QTY		CHANGE IN VALUE	
	QUANTITY (tn or hl)	VALUE (in Euro)	QUANTITY (tn or hl)	VALUE (In Euro)	ABSOLUTE (tn or hl)	%	ABSOLUTE (in Euro)	%
CLICK TOTALS FOR GRAPHICS	(a)	(b)	(c)	(d)	(e)=(a)-(c)	(f)=(e)/(c)*%	(g)=(b)-(d)	(h)=(g)/(d)*%
<b>Blé panifiable</b>	38.946	3.943.028	262.506	27.001.279	-223.560	-85%	-23.058.251	-85%
<b>Orge</b>	627.350	63.766.589	5.229.198	530.389.476	-4.601.847	-88%	-466.622.887	-88%
<b>Seigle</b>								
<b>Sorgho</b>								
<b>Mais</b>			176.007	17.829.616	-176.007	-100%	-17.829.616	-100%
<b>TOTAL CEREALES</b>	<b>666.296</b>	<b>67.709.617</b>	<b>5.667.710</b>	<b>575.220.371</b>	<b>-5.001.415</b>	<b>-88%</b>	<b>-507.510.754</b>	<b>-88%</b>
<b>TOTAL RIZ</b>								
<b>Alcool Public</b>	61.690	2.097.186	765.652	28.419.129	-703.961	-92%	-26.321.943	-93%
<b>Alcool Mixte</b>			1.173	4.655	-1.173	-100%	-4.655	-100%
<b>TOTAL ALCOOL (HL 100%)</b>	<b>61.690</b>	<b>2.097.186</b>	<b>766.825</b>	<b>28.423.784</b>	<b>-705.135</b>	<b>-92%</b>	<b>-26.326.598</b>	<b>-93%</b>
<b>LEP</b>	134.738	200.867.348	236.085	352.365.476	-101.348	-43%	-151.498.128	-43%
<b>Beurre</b>	1.435	3.103.957	58.594	127.602.665	-57.159	-98%	-124.498.707	-98%
<b>TOTAL LAIT ET BEURRE</b>	<b>136.173</b>	<b>203.971.305</b>	<b>294.679</b>	<b>479.968.141</b>	<b>-158.506</b>	<b>-54%</b>	<b>-275.996.835</b>	<b>-58%</b>
<b>Sucre blanc</b>			8.384	2.712.532	-8.384	-100%	-2.712.532	-100%
<b>Sucre brut</b>								
<b>TOTAL SUCRE</b>			<b>8.384</b>	<b>2.712.532</b>	<b>-8.384</b>	<b>-100%</b>	<b>-2.712.532</b>	<b>-100%</b>
<b>Bov. carc.</b>								
<b>Bov. des.</b>								
<b>Eq. carc.</b>								
<b>TOTAL EQ. CARCASSES</b>								
<b>GRAND TOTAL</b>		<b>273.778.109</b>		<b>1.086.324.827</b>			<b>-812.546.718</b>	<b>-75%</b>

SOURCE :

The declarations of the Member States before controls.

THE PUBLIC STORAGE FLASH REPORT AS AT						30-jun-11			
ESPAÑA									
PRODUCTS	YEAR-TO-DATE		OPENING BALANCE		CHANGE IN QTY		CHANGE IN VALUE		
	QUANTITY (in tonnes or hl)	VALUE (in Euro)	QUANTITY (in tonnes or hl)	VALUE (in Euro)	ABSOLUTE (in tonnes or hl)	%	ABSOLUTE (in Euro)	%	
	(a)	(b)	(c)	(d)	(e)=(a)-(c)	(f)=(e)/(c)*%	(g)=(b)-(d)	(h)=(g)/(d)*%	
Ble panifiable									
Orge									
Seigle									
Sorgho									
Mais									
<b>TOTAL CEREALES</b>									
<b>RIZ</b>									
Alcool Public			373.725	12.711.227	-373.725	-100%	-12.711.227	-100%	
Alcool Mixte									
<b>TOT. ALCOOL (HL)</b>			<b>373.725</b>	<b>12.711.227</b>	<b>-373.725</b>	<b>-100%</b>	<b>-12.711.227</b>	<b>-100%</b>	
LEP									
Beurre									
<b>TOTAL L &amp; B</b>									
Sucre Blanc									
Sucre Brut									
<b>TOTAL SUCRE</b>									
Bov. carc.									
Bov. des.									
Eq. carc.									
<b>TOTAL EQ. CARC.</b>									
<b>GRAND TOTAL</b>				<b>12.711.227</b>			<b>-12.711.227</b>	<b>-100%</b>	

30-jun-11

