

CHOOSE COUNTRY

EU TOTAL	YEAR-TO-DATE		OPENING BALANCE (1)		CHANGE IN QTY		CHANGE IN VALUE	
	QUANTITY (tn or hl)	VALUE (in Euro)	QUANTITY (tn or hl)	VALUE (in Euro)	ABSOLUTE (tn or hl)	%	ABSOLUTE (in Euro)	%
CLICK TOTALS FOR GRAPHICS	(a)	(b)	(c)	(d)	(e)=(a)-(c)	(f)=(e)/(c)*%	(g)=(b)-(d)	(h)=(g)/(d)*%
Blé panifiable	37.574	3.806.296	234.577	23.710.769	-197.002	-84%	-19.904.473	-84%
Orge	490.878	49.886.461	5.326.162	540.451.972	-4.835.284	-91%	-490.565.511	-91%
Seigle								
Sorgho								
Mais			3.142	318.234	-3.142	-100%	-318.234	-100%
TOTAL CEREALES	528.453	53.692.757	5.563.880	564.480.975	-5.035.428	-91%	-510.788.218	-90%
TOTAL RIZ								
Alcool Public	61.661	2.096.179	628.630	21.369.957	-566.969	-90%	-19.273.778	-90%
Alcool Mixte			1.173	4.645	-1.173	-100%	-4.645	-100%
TOTAL ALCOOL (HL 100%)	61.661	2.096.179	629.803	21.374.602	-568.142	-90%	-19.278.423	-90%
LEP	122.438	182.517.081	197.223	294.161.988	-74.785	-38%	-111.644.907	-38%
Beurre	1.195	2.579.811	1.545	3.343.770	-351	-23%	-763.959	-23%
TOTAL LAIT ET BEURRE	123.633	185.096.892	198.769	297.505.758	-75.135	-38%	-112.408.866	-38%
Sucre Blanc			9	3.052	-9	-100%	-3.052	-100%
Sucre Brut								
TOTAL SUCRE			9	3.052	-9	-100%	-3.052	-100%
Bov. carc.								
Bov. des.								
Eq. carc.								
TOTAL EQ. CARCASSES								
GRAND TOTAL		240.885.828		883.364.387			-642.478.559	-73%

SOURCE : The declarations of the Member States before controls.

(1) Period 13/2010 annual declaration

quantities are expressed in
tonnes (alcohol in hl 100%)

ACCOUNTING VALUE OF THE PUBLIC INTERVENTION STOCKS AS AT :
(BEFORE THE COMPLEMENTARY DEPRECIATION)

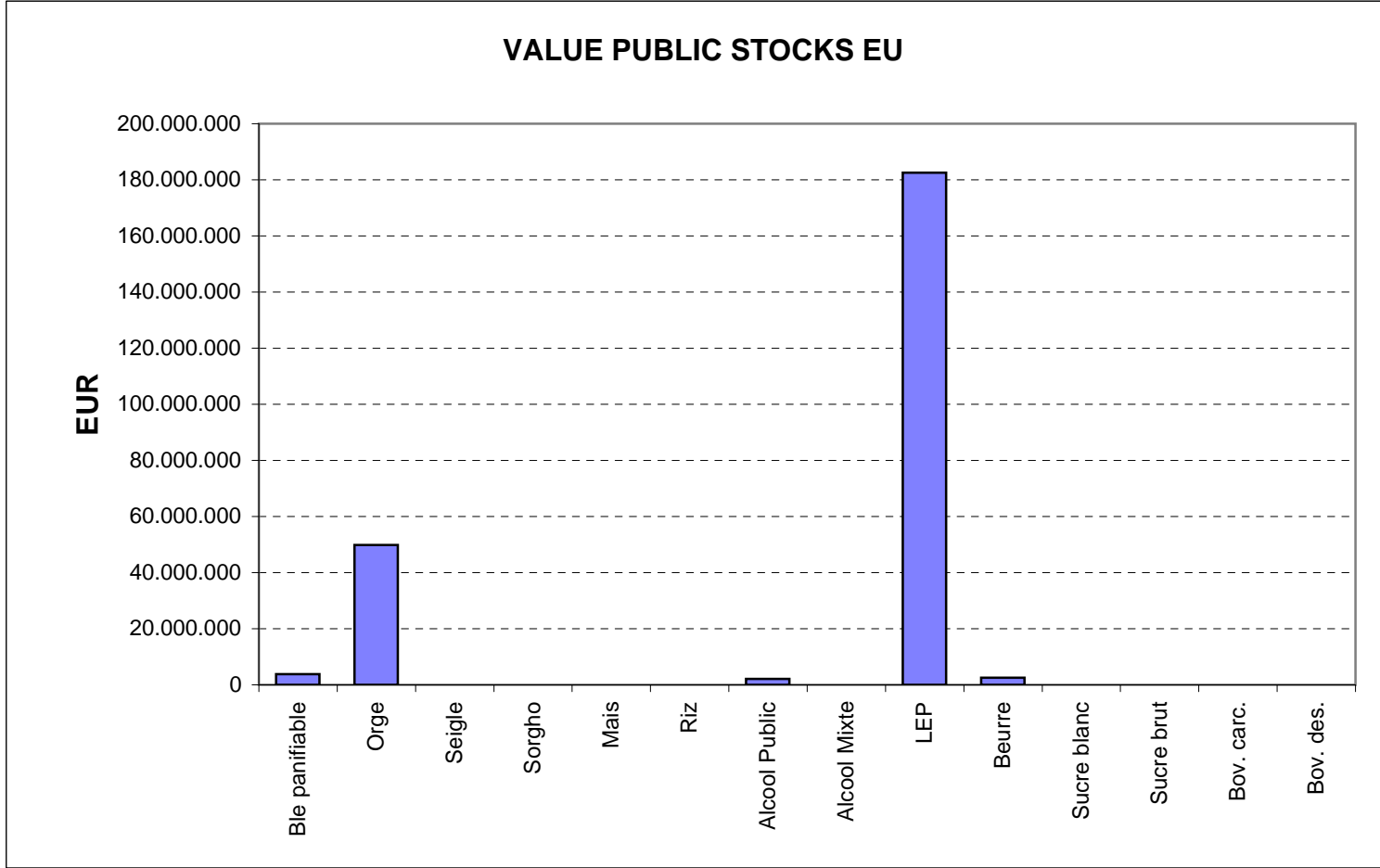
31-jul-11

AGRI I.4

J. FLORET tel. 53236

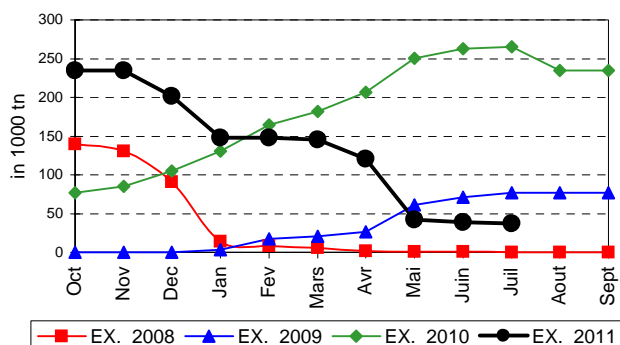
Produits		BE	BG	CZ	DK	DE	EE	IE	EL	ES	FR	IT	CY	LV	LT	LU	HU	MT	NL	OS	PL	PO	RO	SI	SK	FIN	SE	UK	TOTAL
BLE PANIF	quant.																37.574												37.574
	valeur																3.806.296												3.806.296
ORGE	quant.		15	18.729		125.014	5.052				32.992			1.541	3.124		110.928		576	11.991					17.252	88.515	67.216	7.934	490.878
	valeur		1.525	1.974.932		12.563.871	512.189				3.357.938			155.303	314.679		11.314.685		58.481	1.209.004					1.756.114	9.042.726	6.839.196	785.819	49.886.461
SEIGLE	quant.																												
	valeur																												
SORGHO	quant.																												
	valeur																												
MAIS	quant.																												
	valeur																												
TOT.CER	quant.		15	18.729		125.014	5.052				32.992			1.541	3.124		148.503		576	11.991					17.252	88.515	67.216	7.934	528.453
	valeur																												
RIZ	quant.																												
	valeur																												
ALC.P.	quant.												7.112				54.549												61.661
	valeur											241.520					1.854.659												2.096.179
ALC.M.	quant.																												
	valeur																												
TOT.ALC.	quant.												7.112				54.549												61.661
	valeur																												
LEP	quant.	10.654		330		41.546	1.077	26.717			18.175								3.527	1.209	607					123	191	14.601	122.438
	valeur	15.776.680		520.420		61.816.851	1.541.006	39.911.886			27.230.715				5.518.057				5.272.168	1.792.409	909.158					183.487	285.723	21.758.522	182.517.081
BEURRE	quant.						182								1.013														1.195
	valeur						371.083								2.208.728														2.579.811
TOT L&B	quant.	10.654		330		41.546	1.259	26.717			18.175				4.695				3.527	1.209	607					123	191	14.601	123.633
	valeur																												
S. BLANC	quant.																												
	valeur																												
S. BRUT	quant.																												
	valeur																												
TOT. SUC	quant.																												
BOV.QUA	quant.																												
	valeur																												
BOV.DES	quant.																												
	valeur																												
EQ. CARC	quant.																												
TOT EQ	quant.																												
EU TOTAL	valeur	15.776.680	1.525	2.495.352		74.380.723	2.424.277	39.911.886			30.588.653		241.520	155.303	8.041.464	16.975.640		5.272.168	58.481	3.001.413	909.158				1.756.114	9.226.213	7.124.919	22.544.341	240.885.828

PUBLIC INTERVENTION STOCKS

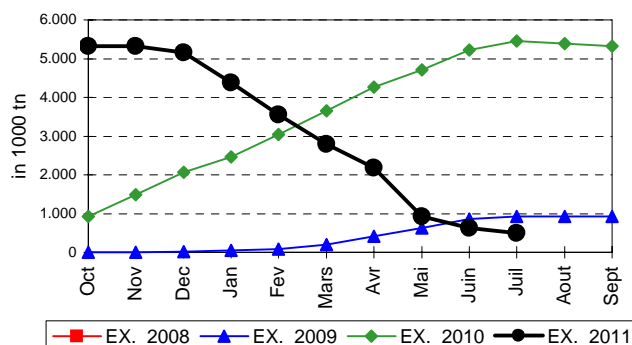


EVOLUTION IN QUANTITIES OF PUBLIC INTERVENTION STOCKS

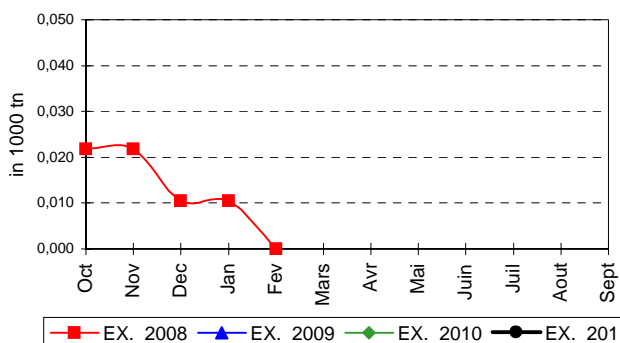
BLE TENDRE PANIFIABLE



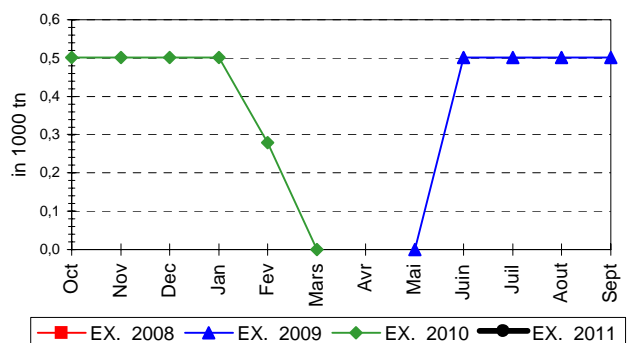
ORGE



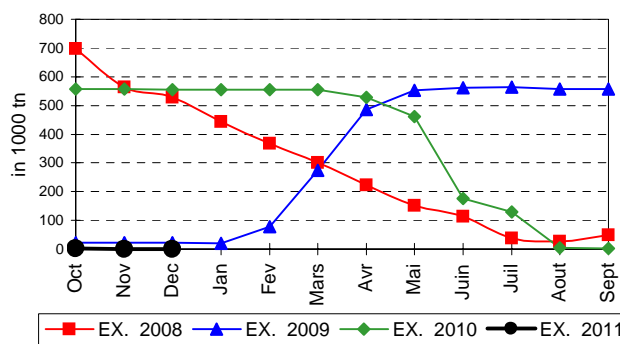
SEIGLE



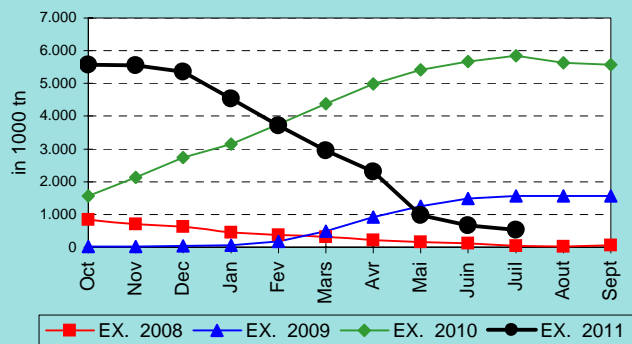
SORGHO



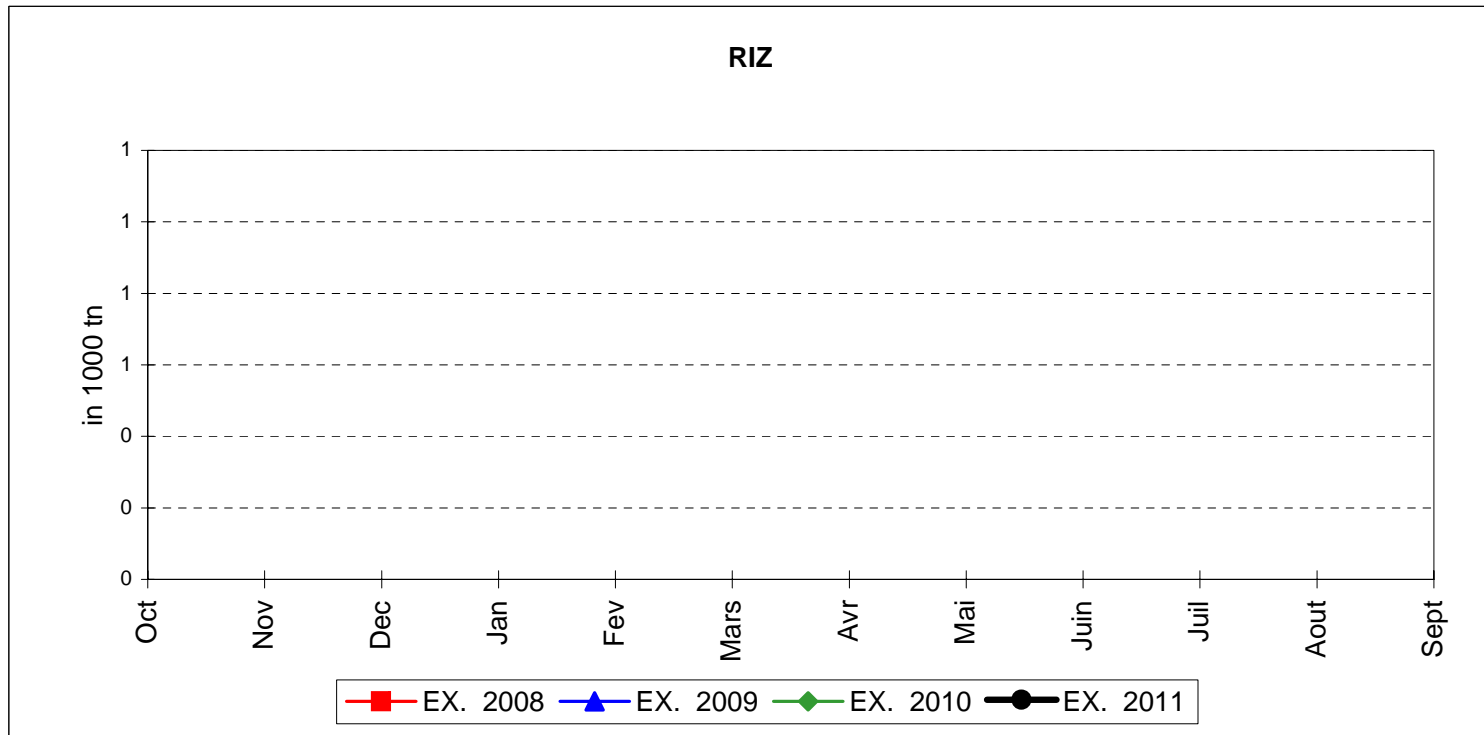
MAIS



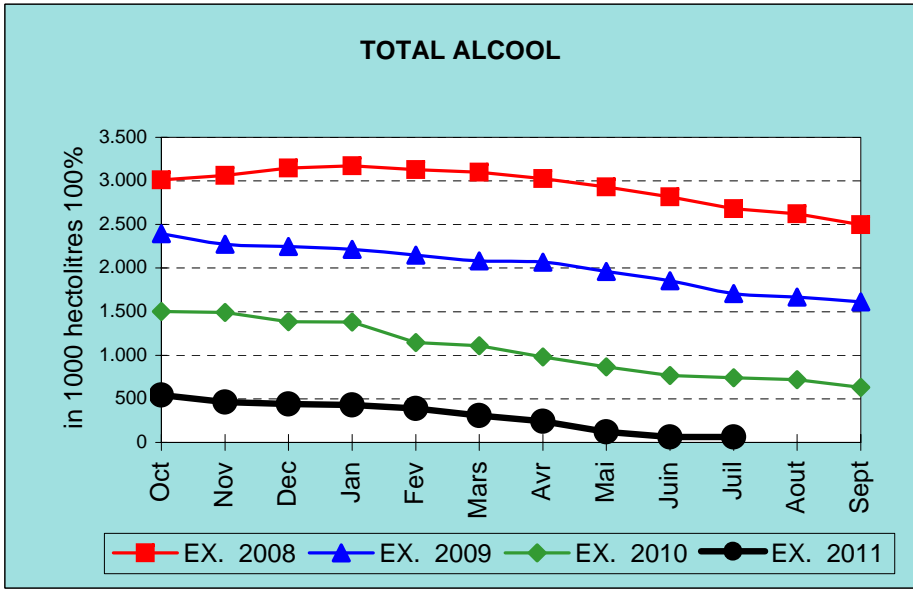
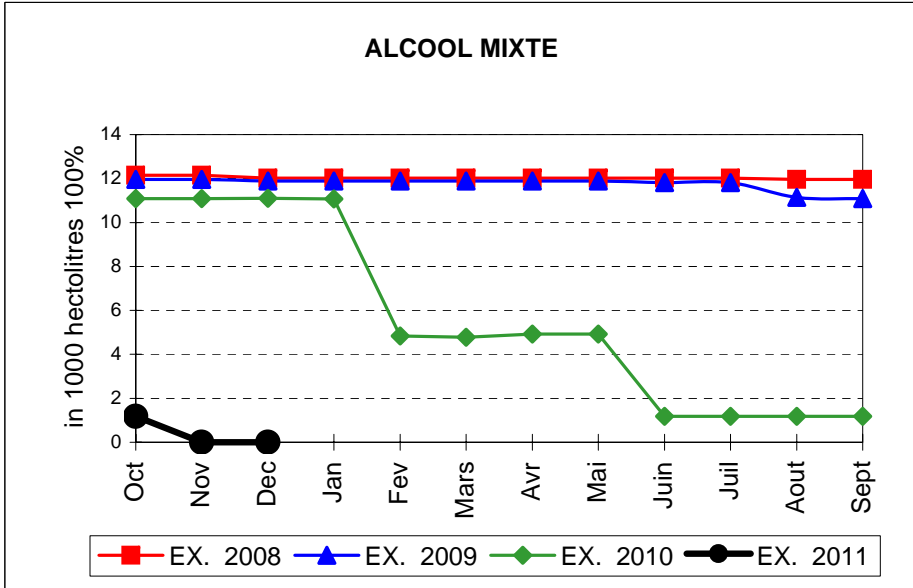
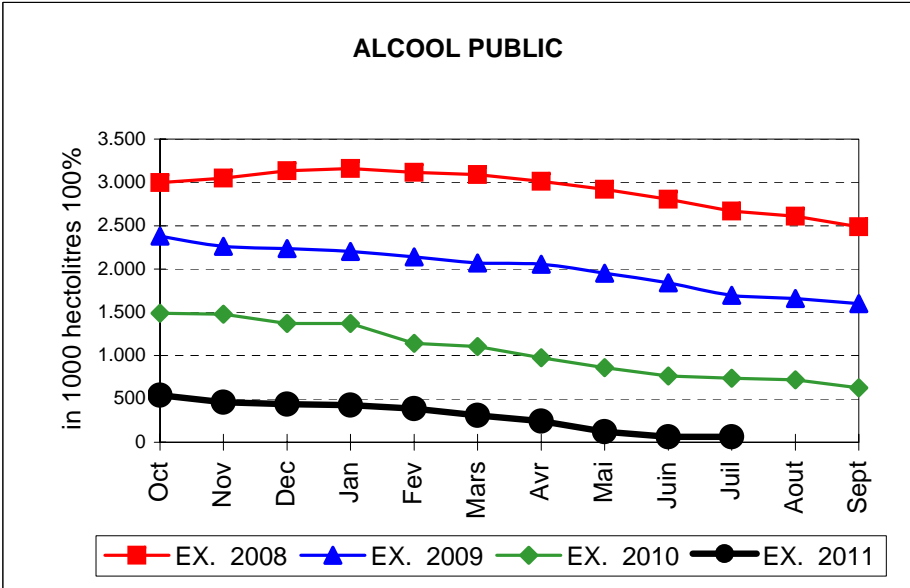
TOTAL CEREALES



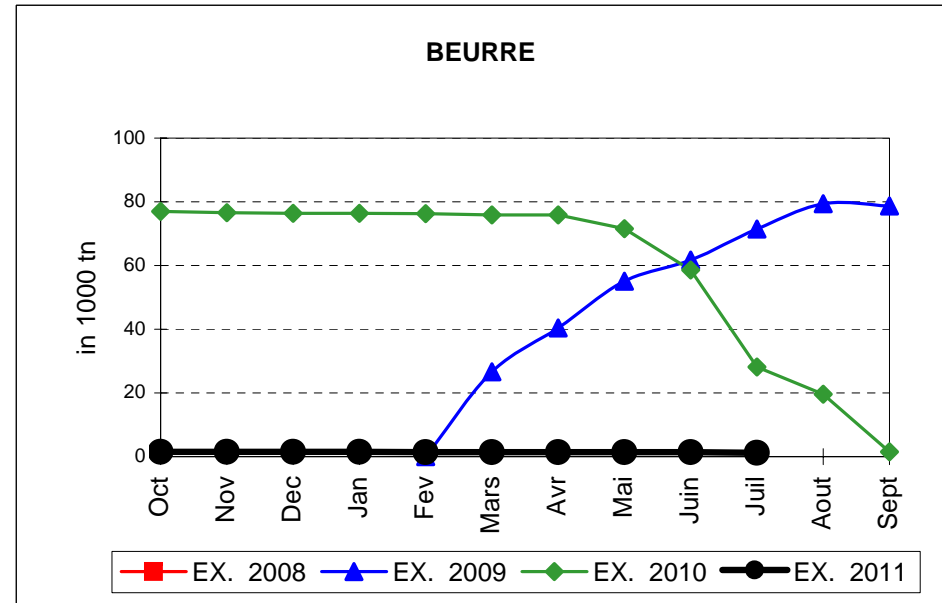
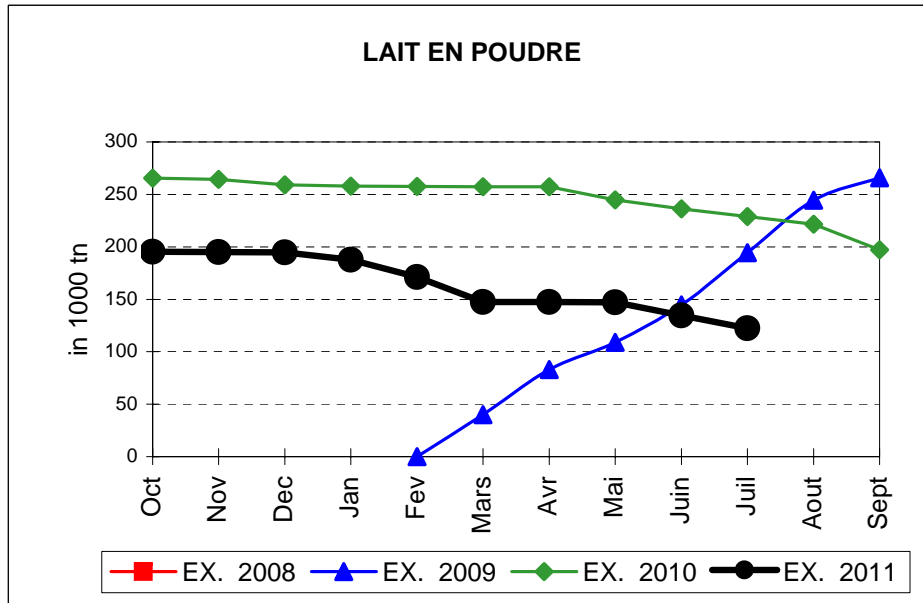
EVOLUTION IN QUANTITIES OF PUBLIC INTERVENTION STOCKS



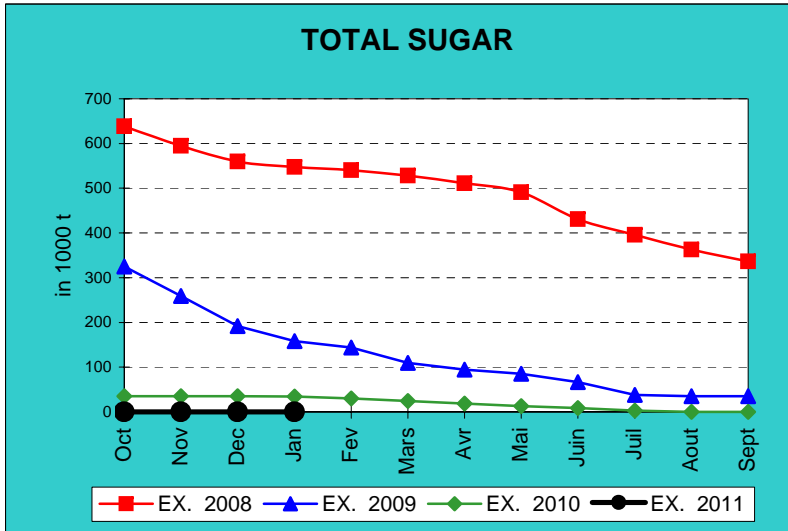
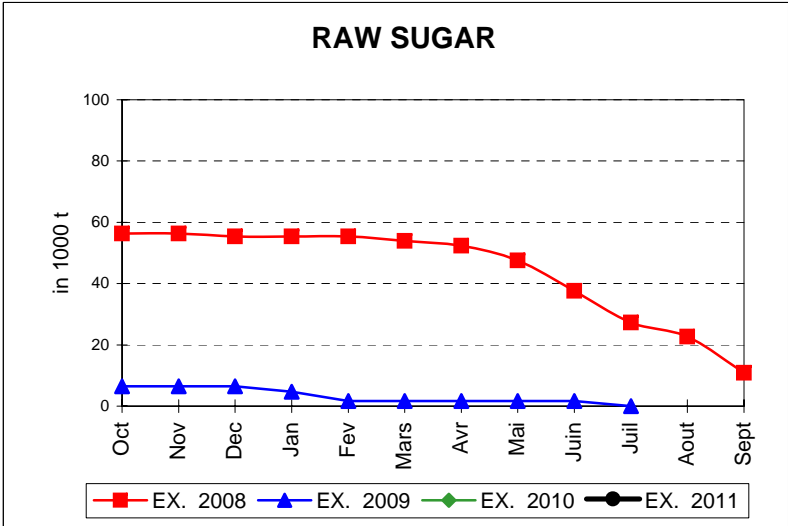
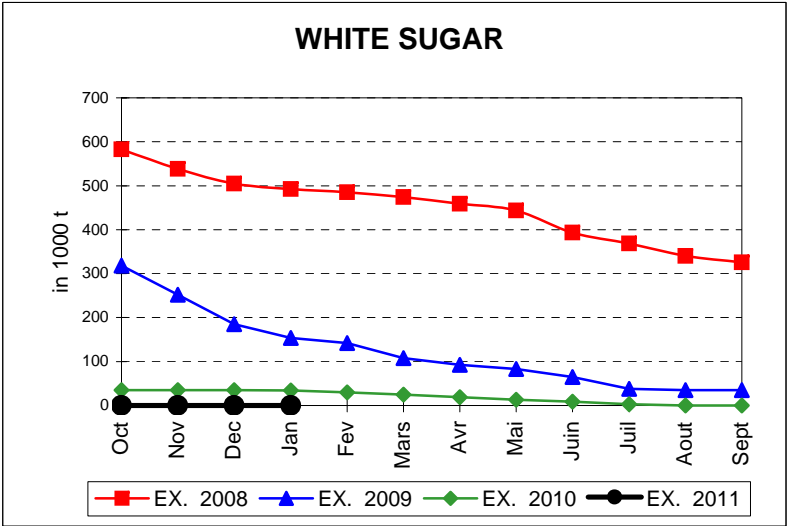
EVOLUTION IN QUANTITIES OF PUBLIC INTERVENTION STOCKS



EVOLUTION IN QUANTITIES OF PUBLIC INTERVENTION STOCKS

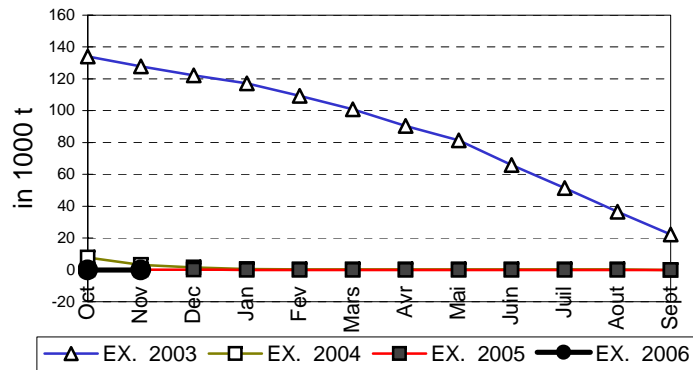


EVOLUTION IN QUANTITIES OF PUBLIC INTERVENTION STOCKS

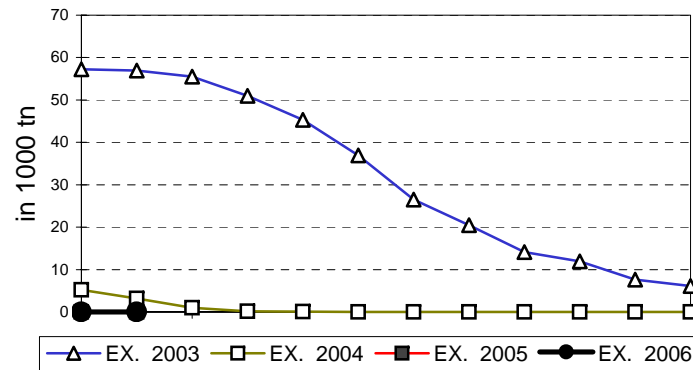


EVOLUTION IN QUANTITIES OF PUBLIC INTERVENTION STOCKS

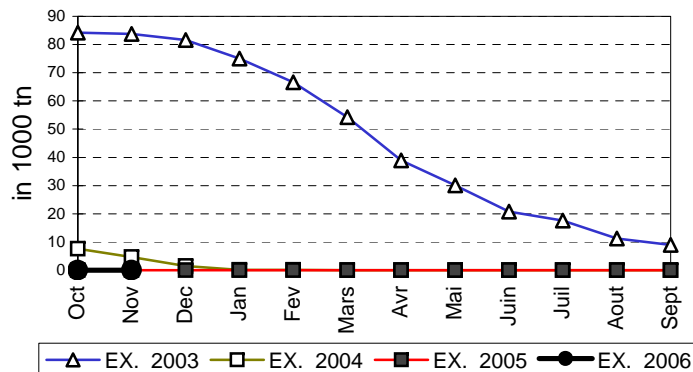
VIANDE BOVINE CARCASSES



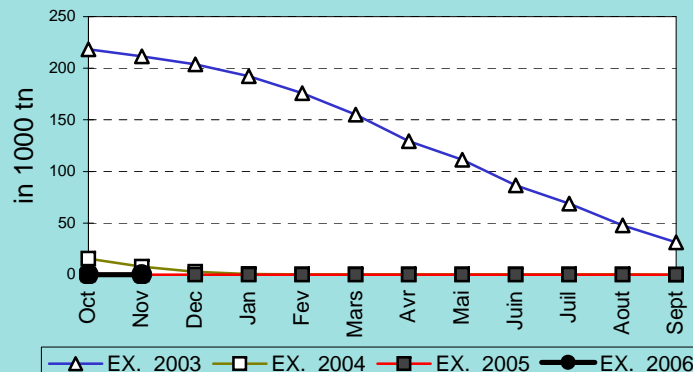
VIANDE BOVINE DESOSSEE



VIANDE DESOSSEE EN EQUIVALENT CARCASSES



TOTAL VIANDE EN EQUIVALENT CARCASSES



COMPARED WITH PREVIOUS MONTH

EU TOTAL	31-jul-11		30-jun-11		CHANGE IN QTY		CHANGE IN VALUE	
	QUANTITY (tn or hl)	VALUE (in Euro)	QUANTITY (tn or hl)	VALUE (In Euro)	ABSOLUTE (tn or hl)	%	ABSOLUTE (in Euro)	%
CLICK TOTALS FOR GRAPHICS	(a)	(b)	(c)	(d)	(e)=(a)-(c)	(f)=(e)/(c)*%	(g)=(b)-(d)	(h)=(g)/(d)*%
Blé panifiable	37.574	3.806.296	38.946	3.943.028	-1.371	-4%	-136.732	-3%
Orge	490.878	49.886.461	627.350	63.766.589	-136.472	-22%	-13.880.128	-22%
Seigle								
Sorgho								
Mais								
TOTAL CEREALES	528.453	53.692.757	666.296	67.709.617	-137.843	-21%	-14.016.860	-21%
TOTAL RIZ								
Alcool Public	61.661	2.096.179	61.690	2.097.186	-30	0%	-1.007	0%
Alcool Mixte								
TOTAL ALCOOL (HL 100%)	61.661	2.096.179	61.690	2.097.186	-30	0%	-1.007	0%
LEP	122.438	182.517.081	134.738	200.867.348	-12.299	-9%	-18.350.267	-9%
Beurre	1.195	2.579.811	1.435	3.103.957	-240	-17%	-524.147	-17%
TOTAL LAIT ET BEURRE	123.633	185.096.892	136.173	203.971.305	-12.540	-9%	-18.874.414	-9%
Sucre blanc								
Sucre brut								
TOTAL SUCRE								
Bov. carc.								
Bov. des.								
Eq. carc.								
TOTAL EQ. CARCASSES								
GRAND TOTAL		240.885.828		273.778.109			-32.892.280	-12%

SOURCE : The declarations of the Member States before controls.

COMPARED WITH PREVIOUS YEAR

EU TOTAL	31-jul-11		31-jul-10		CHANGE IN QTY		CHANGE IN VALUE	
	QUANTITY (tn or hl)	VALUE (in Euro)	QUANTITY (tn or hl)	VALUE (In Euro)	ABSOLUTE (tn or hl)	%	ABSOLUTE (in Euro)	%
CLICK TOTALS FOR GRAPHICS	(a)	(b)	(c)	(d)	(e)=(a)-(c)	(f)=(e)/(c)*%	(g)=(b)-(d)	(h)=(g)/(d)*%
Blé panifiable	37.574	3.806.296	265.175	27.287.342	-227.601	-86%	-23.481.046	-86%
Orge	490.878	49.886.461	5.449.323	553.072.708	-4.958.445	-91%	-503.186.247	-91%
Seigle								
Sorgho								
Mais			128.326	12.999.380	-128.326	-100%	-12.999.380	-100%
TOTAL CEREALES	528.453	53.692.757	5.842.823	593.359.430	-5.314.370	-91%	-539.666.673	-91%
TOTAL RIZ								
Alcool Public	61.661	2.096.179	740.720	27.491.179	-679.059	-92%	-25.395.000	-92%
Alcool Mixte			1.173	4.655	-1.173	-100%	-4.655	-100%
TOTAL ALCOOL (HL 100%)	61.661	2.096.179	741.894	27.495.834	-680.233	-92%	-25.399.655	-92%
LEP	122.438	182.517.081	228.844	341.540.161	-106.406	-46%	-159.023.080	-47%
Beurre	1.195	2.579.811	28.115	61.220.824	-26.920	-96%	-58.641.013	-96%
TOTAL LAIT ET BEURRE	123.633	185.096.892	256.959	402.760.985	-133.326	-52%	-217.664.093	-54%
Sucre blanc			3.132	1.013.340	-3.132	-100%	-1.013.340	-100%
Sucre brut								
TOTAL SUCRE			3.132	1.013.340	-3.132	-100%	-1.013.340	-100%
Bov. carc.								
Bov. des.								
Eq. carc.								
TOTAL EQ. CARCASSES								
GRAND TOTAL		240.885.828		1.024.629.588			-783.743.760	-76%

SOURCE :

The declarations of the Member States before controls.

THE PUBLIC STORAGE FLASH REPORT AS AT								31-jul-11	
ESPAÑA									
PRODUCTS	YEAR-TO-DATE		OPENING BALANCE		CHANGE IN QTY		CHANGE IN VALUE		
	QUANTITY (in tonnes or hl)	VALUE (in Euro)	QUANTITY (in tonnes or hl)	VALUE (in Euro)	ABSOLUTE (in tonnes or hl)	%	ABSOLUTE (in Euro)	%	
	(a)	(b)	(c)	(d)	(e)=(a)-(c)	(f)=(e)/(c)*%	(g)=(b)-(d)	(h)=(g)/(d)*%	
Ble panifiable									
Orge									
Seigle									
Sorgho									
Mais									
TOTAL CEREALES									
RIZ									
Alcool Public			373.725	12.711.227	-373.725	-100%	-12.711.227	-100%	
Alcool Mixte									
TOT. ALCOOL (HL)			373.725	12.711.227	-373.725	-100%	-12.711.227	-100%	
LEP									
Beurre									
TOTAL L & B									
Sucre Blanc									
Sucre Brut									
TOTAL SUCRE									
Bov. carc.									
Bov. des.									
Eq. carc.									
TOTAL EQ. CARC.									
GRAND TOTAL				12.711.227			-12.711.227	-100%	

