

CHOOSE COUNTRY

EU TOTAL	YEAR-TO-DATE		OPENING BALANCE (1)		CHANGE IN QTY		CHANGE IN VALUE	
	QUANTITY (tn or hl)	VALUE (in Euro)	QUANTITY (tn or hl)	VALUE (In Euro)	ABSOLUTE (tn or hl)	%	ABSOLUTE (in Euro)	%
CLICK TOTALS FOR GRAPHICS	(a)	(b)	(c)	(d)	(e)=(a)-(c)	(f)=(e)/(c)*%	(g)=(b)-(d)	(h)=(g)/(d)*%
Blé panifiable	76.728	8.381.830	37	3.302	76.691	208910%	8.378.528	253736%
Orge	925.477	98.654.003			925.477		98.654.003	
Seigle								
Sorgho	502	51.417			502		51.417	
Mais	558.196	57.573.850	47.207	4.635.238	510.989	1082%	52.938.612	1142%
TOTAL CEREALES	1.560.903	164.661.101	47.244	4.638.540	1.513.660	3204%	160.022.561	3450%
TOTAL RIZ								
Alcool Public	1.657.707	70.890.220	2.484.895	104.449.771	-827.188	-33%	-33.559.551	-32%
Alcool Mixte	11.145	181.567	11.894	184.533	-749	-6%	-2.965	-2%
TOTAL ALCOOL (HL 100%)	1.668.852	71.071.787	2.496.789	104.634.304	-827.937	-33%	-33.562.516	-32%
LEP	244.314	412.252.353			244.314		412.252.353	
Beurre	79.404	174.705.656			79.404		174.705.656	
TOTAL LAIT ET BEURRE	323.718	586.958.009			323.718		586.958.009	
Sucre Blanc	34.832	11.618.733	325.254	108.760.191	-290.422	-89%	-97.141.457	-89%
Sucre Brut			10.902	2.635.883	-10.902	-100%	-2.635.883	-100%
TOTAL SUCRE	34.832	11.618.733	336.156	111.396.074	-301.324	-90%	-99.777.341	-90%
Bov. carc.								
Bov. des.								
Eq. carc.								
TOTAL EQ. CARCASSES								
GRAND TOTAL		834.309.631		220.668.917			613.640.713	278%

SOURCE : The declarations of the Member States before controls.

(1) Period 13/2008 annual declaration

quantities are expressed in
tonnes (alcohol in hl 100%)

ACCOUNTING VALUE OF THE PUBLIC INTERVENTION STOCKS AS AT :
(BEFORE THE COMPLEMENTARY DEPRECIATION)

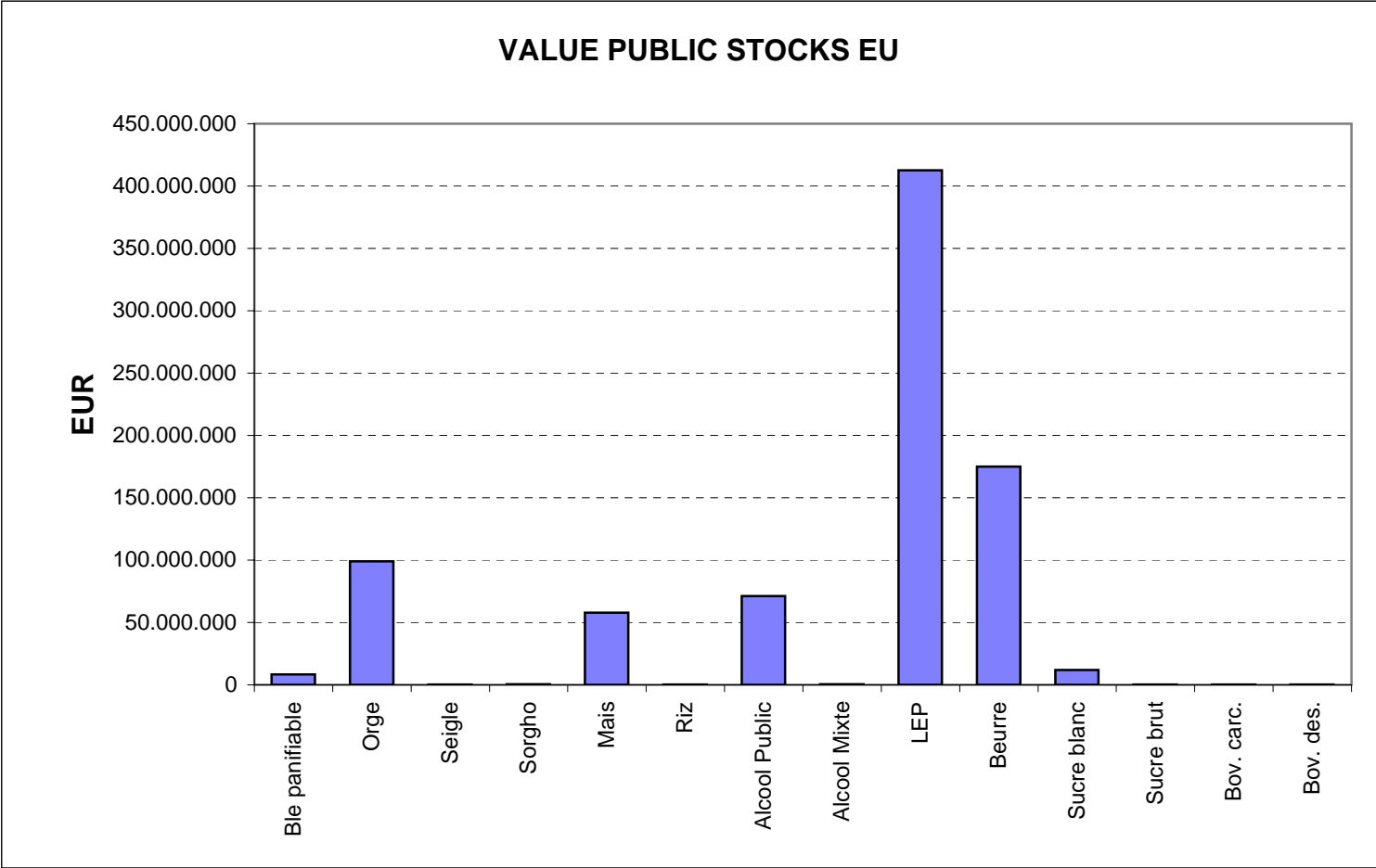
31-ago-09

AGRI I.4

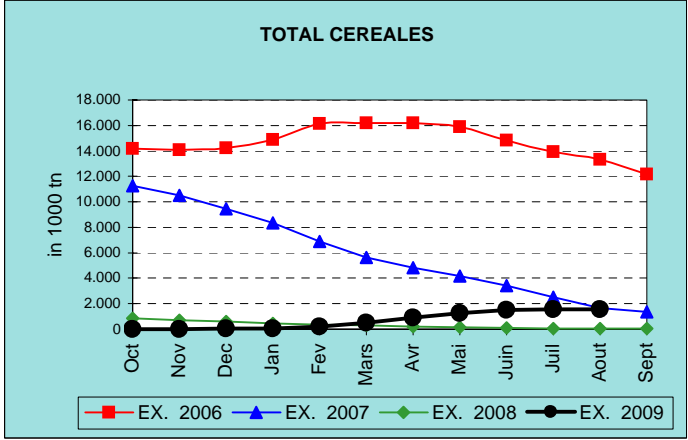
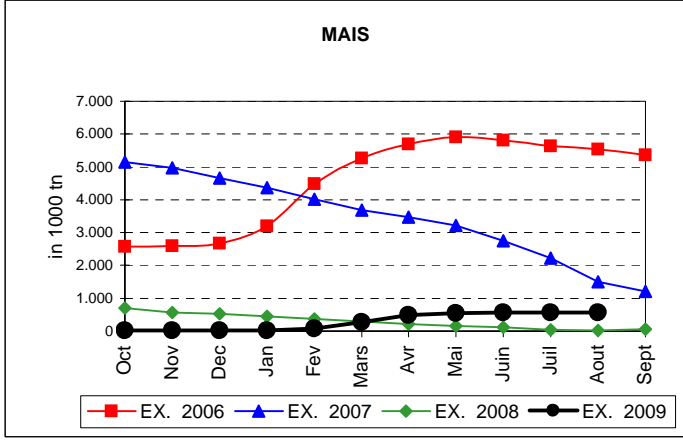
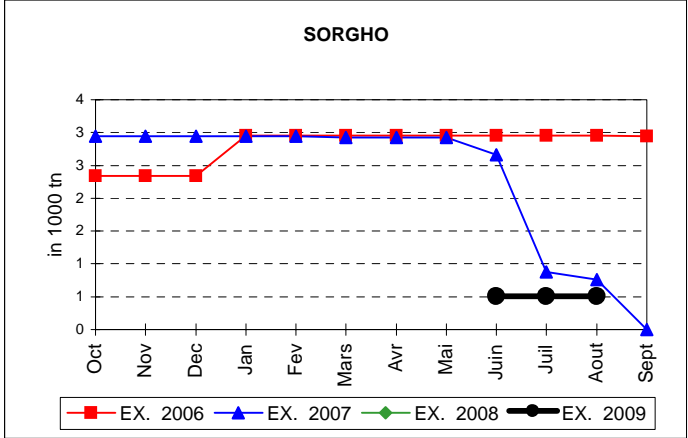
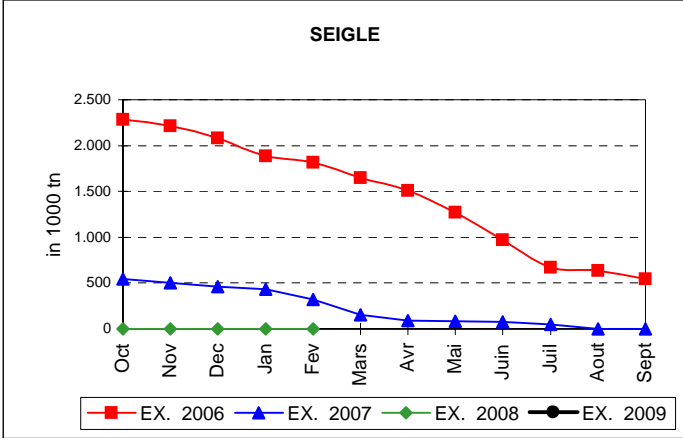
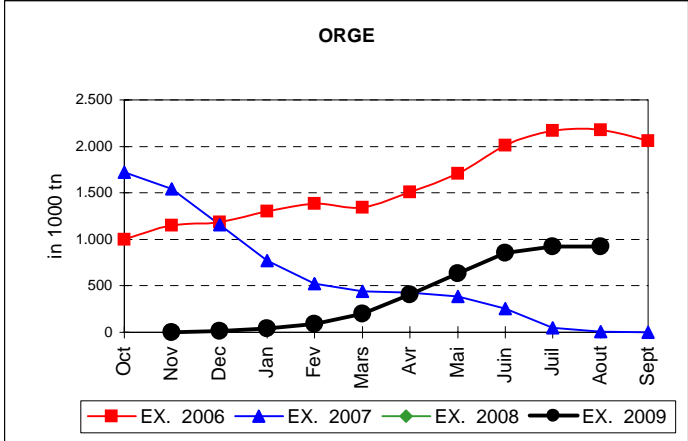
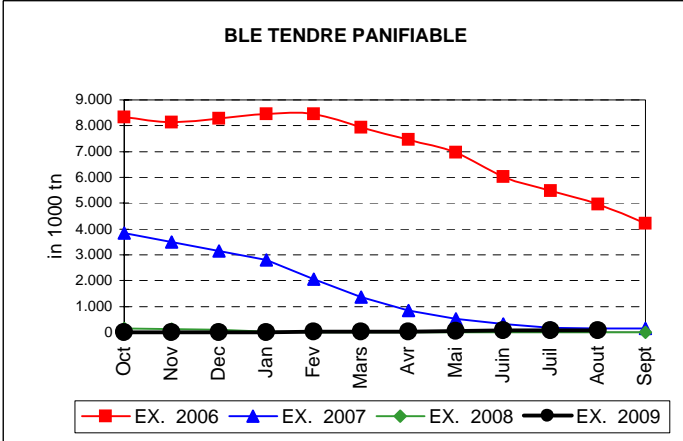
J. FLORET tel. 53236

Produits		BE	BG	CZ	DK	DE	EE	IE	EL	ES	FR	IT	CY	LV	LT	LU	HU	MT	NL	OS	PL	PO	RO	SI	SK	FIN	SE	UK	TOTAL
BLE PANIF	quant.		3.013	31.984													30.430				1.382				9.171	748			76.728
	valeur		310.798	3.698.653														3.192.389				143.700				959.143	77.147		
ORGE	quant.			159.074		141.670	6.169								76.489		136.511			6.852	79.157				24.083	224.434	71.038		925.477
	valeur			18.525.724		14.710.971	646.738								7.939.559		14.401.892			711.698	8.274.264				2.508.478	23.500.522	7.434.157		98.654.003
SEIGLE	quant.																												
	valeur																												
SORGHO	quant.																502												502
	valeur																51.417												51.417
MAIS	quant.																447.792								110.404				558.196
	valeur																46.135.974								11.437.876				57.573.850
TOT.CER	quant.		3.013	191.058		141.670	6.169								76.489		615.234			6.852	80.539				143.659	225.182	71.038		1.560.903
RIZ	quant.																												
ALC.P.	quant.								60.366	575.307	341.491	545.804	7.285				55.237					72.217							1.657.707
	valeur								2.584.868	24.335.486	14.332.358	23.425.912	332.865				2.343.689					3.535.041							70.890.220
ALC.M.	quant.										1.040	10.105																	11.145
	valeur										4.118	177.449																	181.567
TOT.ALC.	quant.								60.366	575.307	342.530	555.909	7.285				55.237					72.217							1.668.852
LEP	quant.	22.398		3.685		62.659	2.370	31.407		870	50.753				8.488				19.958		18.498	2.320			1.327	3.647	15.934		244.314
	valeur	37.575.907		6.888.221		105.683.176	3.975.522	52.821.925		1.461.191	85.517.746				14.245.548				33.679.828		31.006.054	3.906.196			2.242.630	6.192.266	27.056.144		412.252.353
BEURRE	quant.	3.234		527		9.894	1.199	14.275		8.951	16.509				1.778				11.541		1.901	5.079					4.516		79.404
	valeur	7.121.966		1.271.176		21.760.897	2.608.135	31.399.762		19.604.391	36.232.028				3.901.953				25.522.917		4.170.495	11.097.818					10.014.119		174.705.656
TOT L&B	quant.	25.632		4.213		72.553	3.570	45.682		9.821	67.262				10.266				31.499		20.398	7.399			1.327	3.647	20.450		323.718
S. BLANC	quant.	1.111		2.138				1.392				30.191																	34.832
	valeur	324.848		720.950				404.975				10.167.960																	11.618.733
S. BRUT	quant.																												
	valeur																												
TOT. SUC	quant.	1.111		2.138				1.392				30.191																	34.832
BOV.QUA	quant.																												
BOV.DES	quant.																												
EQ. CARC	quant.																												
TOT EQ	quant.																												
EU TOTAL	valeur	45.022.721	310.798	31.104.724		142.155.044	7.230.395	84.626.661	2.584.868	45.401.068	136.086.250	33.771.321	332.865	26.087.060	66.125.361	59.202.744	711.698	43.594.514	18.539.055		14.905.497	25.820.299	13.626.424	37.070.263				834.309.631	

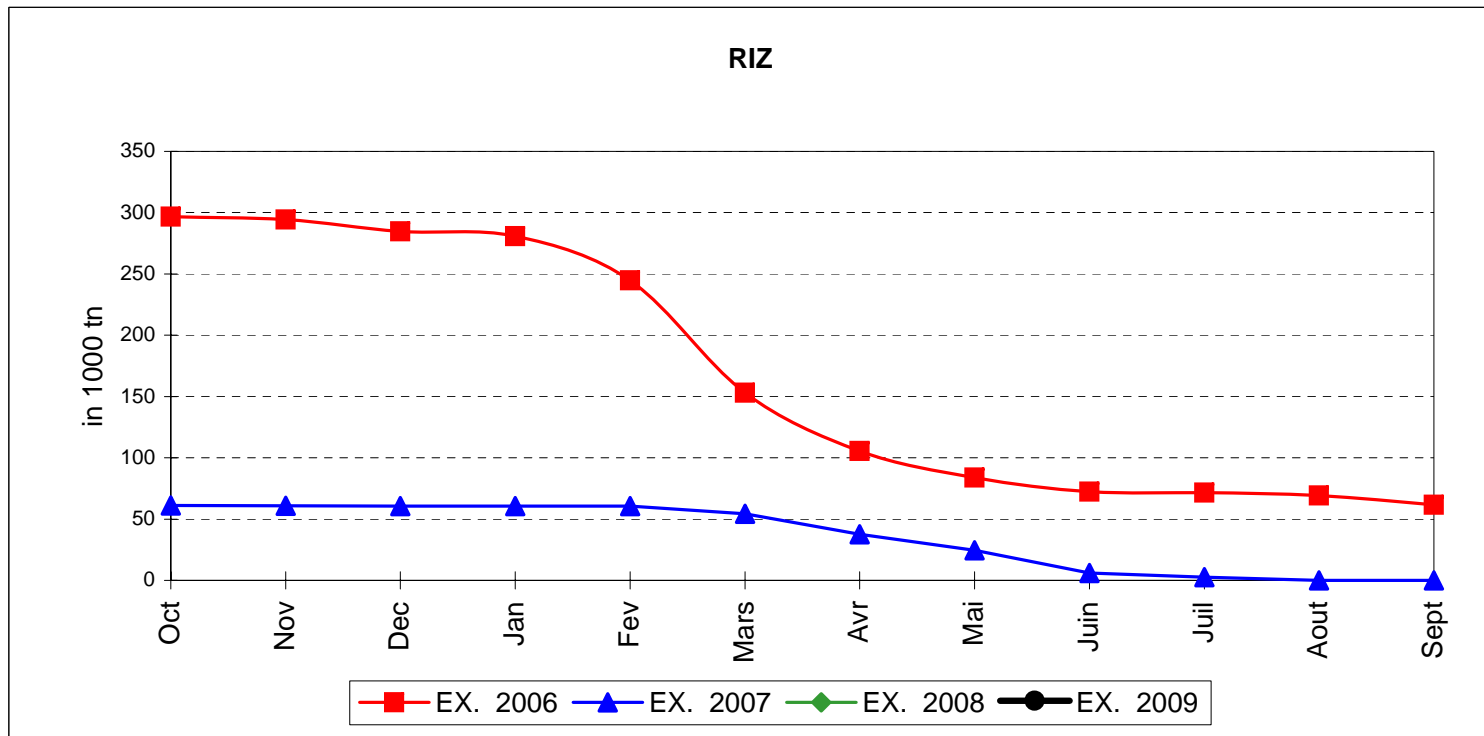
PUBLIC INTERVENTION STOCKS



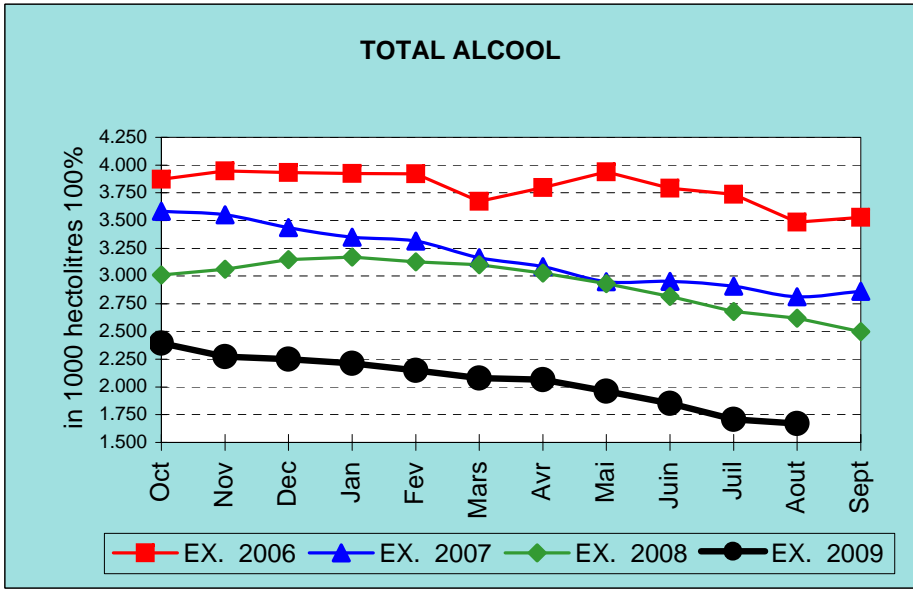
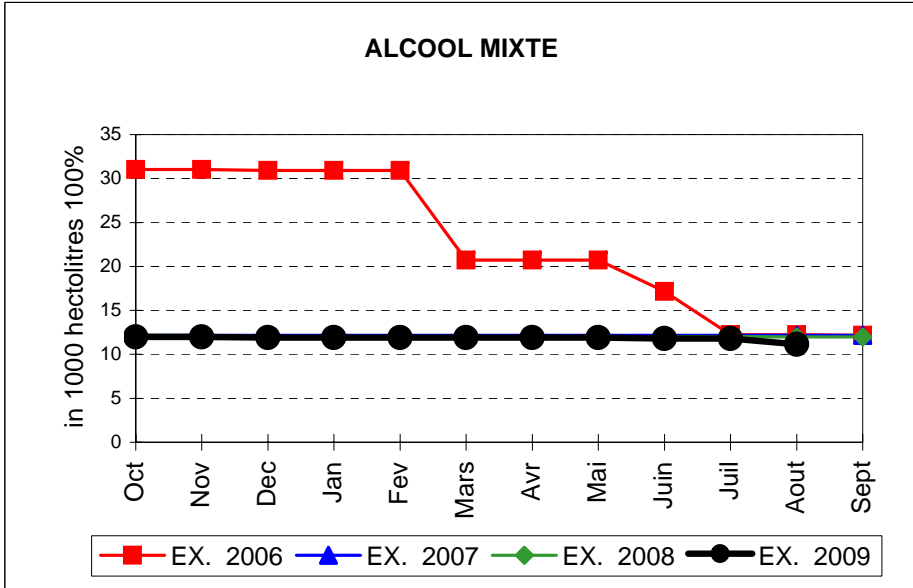
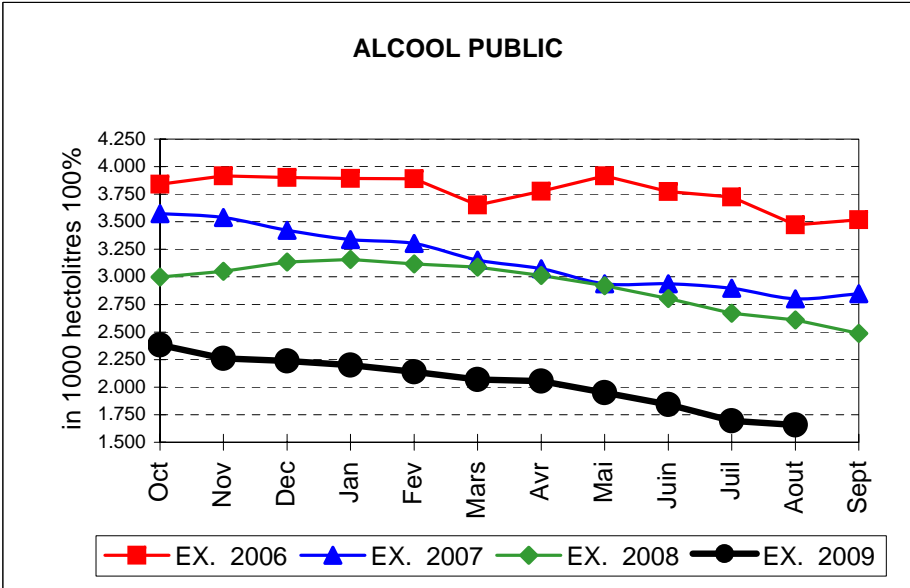
EVOLUTION IN QUANTITIES OF PUBLIC INTERVENTION STOCKS



EVOLUTION IN QUANTITIES OF PUBLIC INTERVENTION STOCKS

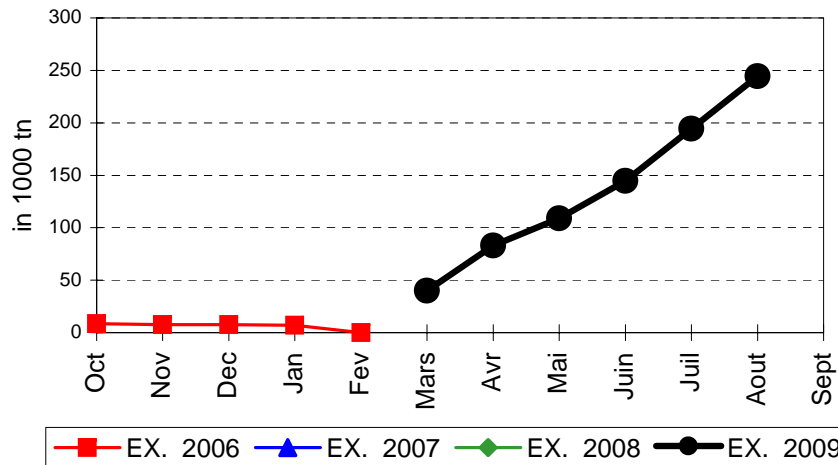


EVOLUTION IN QUANTITIES OF PUBLIC INTERVENTION STOCKS

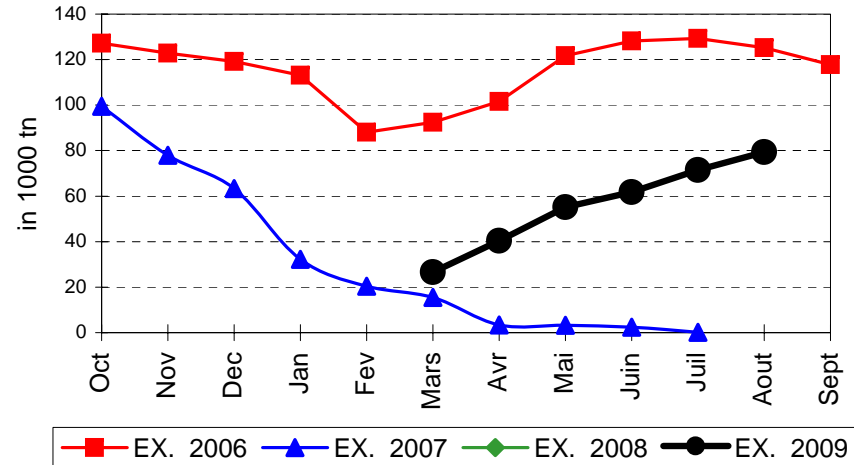


EVOLUTION IN QUANTITIES OF PUBLIC INTERVENTION STOCKS

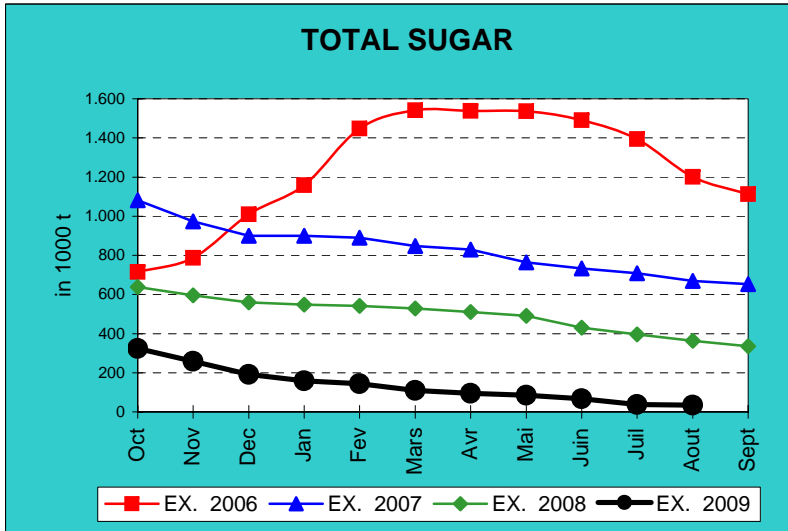
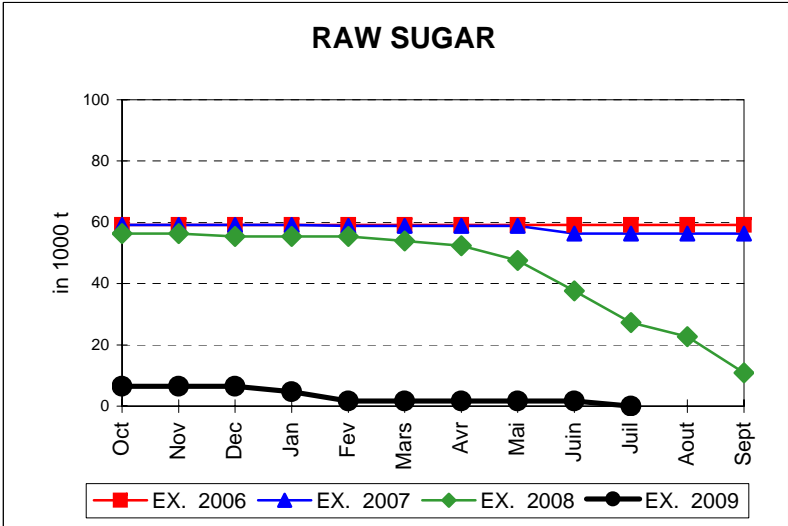
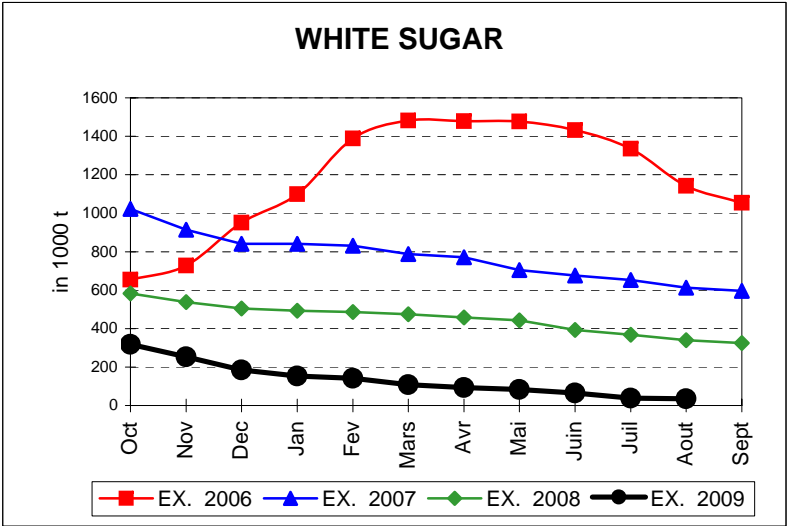
LAIT EN POUVRE



BEURRE

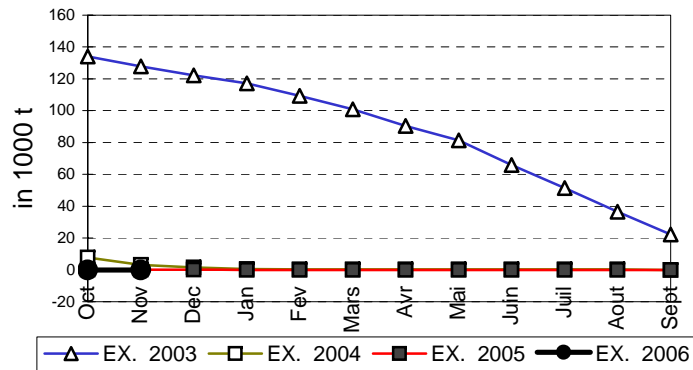


EVOLUTION IN QUANTITIES OF PUBLIC INTERVENTION STOCKS

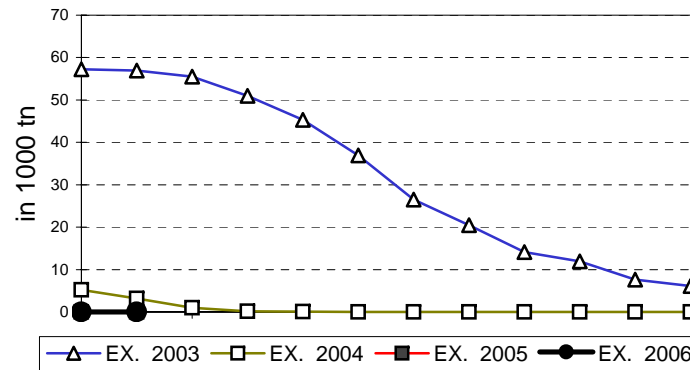


EVOLUTION IN QUANTITIES OF PUBLIC INTERVENTION STOCKS

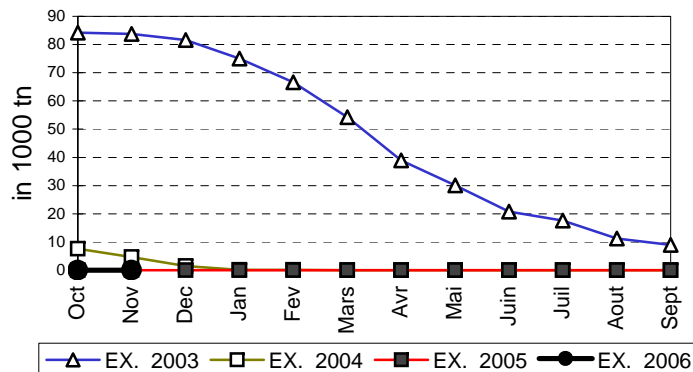
VIANDE BOVINE CARCASSES



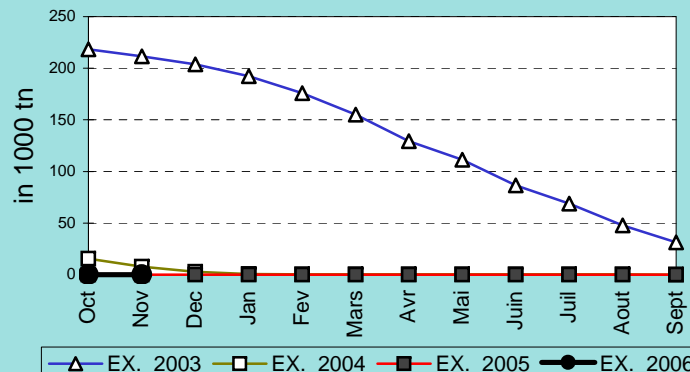
VIANDE BOVINE DESOSSEE



VIANDE DESOSSEE EN EQUIVALENT CARCASSES



TOTAL VIANDE EN EQUIVALENT CARCASSES



COMPARED WITH PREVIOUS MONTH

EU TOTAL	31-ago-09		31-jul-09		CHANGE IN QTY		CHANGE IN VALUE	
	QUANTITY (tn or hl)	VALUE (in Euro)	QUANTITY (tn or hl)	VALUE (In Euro)	ABSOLUTE (tn or hl)	%	ABSOLUTE (in Euro)	%
CLICK TOTALS FOR GRAPHICS	(a)	(b)	(c)	(d)	(e)=(a)-(c)	(f)=(e)/(c)*%	(g)=(b)-(d)	(h)=(g)/(d)*%
Blé panifiable	76.728	8.381.830	76.728	8.382.174			-344	0%
Orge	925.477	98.654.003	923.735	98.458.120	1.743	0%	195.883	0%
Seigle								
Sorgho	502	51.417	502	51.417				
Mais	558.196	57.573.850	563.900	58.161.595	-5.705	-1%	-587.745	-1%
TOTAL CEREALES	1.560.903	164.661.101	1.564.865	165.053.306	-3.962	0%	-392.205	0%
TOTAL RIZ								
Alcool Public	1.657.707	70.890.220	1.695.633	72.493.865	-37.927	-2%	-1.603.645	-2%
Alcool Mixte	11.145	181.567	11.817	184.229	-672	-6%	-2.661	-1%
TOTAL ALCOOL (HL 100%)	1.668.852	71.071.787	1.707.451	72.678.093	-38.599	-2%	-1.606.306	-2%
LEP	244.314	412.252.353	194.534	330.176.248	49.781	26%	82.076.105	25%
Beurre	79.404	174.705.656	71.464	158.066.851	7.940	11%	16.638.806	11%
TOTAL LAIT ET BEURRE	323.718	586.958.009	265.997	488.243.099	57.721	22%	98.714.911	20%
Sucre blanc	34.832	11.618.733	38.170	12.642.116	-3.338	-9%	-1.023.383	-8%
Sucre brut								
TOTAL SUCRE	34.832	11.618.733	38.170	12.642.116	-3.338	-9%	-1.023.383	-8%
Bov. carc.								
Bov. des.								
Eq. carc.								
TOTAL EQ. CARCASSES								
GRAND TOTAL		834.309.631		738.616.615			95.693.016	13%

SOURCE : The declarations of the Member States before controls.

COMPARED WITH PREVIOUS YEAR

EU TOTAL	31-ago-09		31-ago-08		CHANGE IN QTY		CHANGE IN VALUE	
	QUANTITY (tn or hl)	VALUE (in Euro)	QUANTITY (tn or hl)	VALUE (In Euro)	ABSOLUTE (tn or hl)	%	ABSOLUTE (in Euro)	%
CLICK TOTALS FOR GRAPHICS	(a)	(b)	(c)	(d)	(e)=(a)-(c)	(f)=(e)/(c)*%	(g)=(b)-(d)	(h)=(g)/(d)*%
Blé panifiable	76.728	8.381.830	37	3.302	76.691	208910%	8.378.528	253736%
Orge	925.477	98.654.003			925.477		98.654.003	
Seigle								
Sorgho	502	51.417			502		51.417	
Mais	558.196	57.573.850	26.159	2.568.588	532.037	2034%	55.005.263	2141%
TOTAL CEREALES	1.560.903	164.661.101	26.196	2.571.890	1.534.707	5859%	162.089.211	6302%
TOTAL RIZ								
Alcool Public	1.657.707	70.890.220	2.608.608	127.352.212	-950.901	-36%	-56.461.993	-44%
Alcool Mixte	11.145	181.567	11.965	185.786	-819	-7%	-4.219	-2%
TOTAL ALCOOL (HL 100%)	1.668.852	71.071.787	2.620.572	127.537.999	-951.720	-36%	-56.466.212	-44%
LEP	244.314	412.252.353			244.314		412.252.353	
Beurre	79.404	174.705.656			79.404		174.705.656	
TOTAL LAIT ET BEURRE	323.718	586.958.009			323.718		586.958.009	
Sucre blanc	34.832	11.618.733	340.337	123.588.408	-305.506	-90%	-111.969.675	-91%
Sucre brut			22.627	5.470.722	-22.627	-100%	-5.470.722	-100%
TOTAL SUCRE	34.832	11.618.733	362.964	129.059.130	-328.133	-90%	-117.440.397	-91%
Bov. carc.								
Bov. des.								
Eq. carc.								
TOTAL EQ. CARCASSES								
GRAND TOTAL		834.309.631		259.169.018			575.140.612	222%

SOURCE :

The declarations of the Member States before controls.

THE PUBLIC STORAGE FLASH REPORT AS AT						31-ago-09			
ESPAÑA									
PRODUCTS	YEAR-TO-DATE		OPENING BALANCE		CHANGE IN QTY		CHANGE IN VALUE		
	QUANTITY (in tonnes or hl) (a)	VALUE (in Euro) (b)	QUANTITY (in tonnes or hl) (c)	VALUE (in Euro) (d)	ABSOLUTE (in tonnes or hl) (e)=(a)-(c)	% (f)=(e)/(c)*% (g)	ABSOLUTE (in Euro) (h)=(b)-(d)	% (i)=(g)/(d)*% (i)	
Ble panifiable									
Orge									
Seigle									
Sorgho									
Mais									
TOTAL CEREALES									
RIZ									
Alcool Public	575.307	24.335.486	820.230	34.532.971	-244.923	-30%	-10.197.485	-30%	
Alcool Mixte									
TOT. ALCOOL (HL)	575.307	24.335.486	820.230	34.532.971	-244.923	-30%	-10.197.485	-30%	
LEP	870	1.461.191			870		1.461.191		
Beurre	8.951	19.604.391			8.951		19.604.391		
TOTAL L & B	9.821	21.065.582			9.821		21.065.582		
Sucre Blanc									
Sucre Brut									
TOTAL SUCRE									
Bov. carc.									
Bov. des.									
Eq. carc.									
TOTAL EQ. CARC.									
GRAND TOTAL		45.401.068		34.532.971			10.868.097	31%	

