

CHOOSE COUNTRY

EU TOTAL	YEAR-TO-DATE		OPENING BALANCE (1)		CHANGE IN QTY		CHANGE IN VALUE	
	QUANTITY (tn or hl)	VALUE (in Euro)	QUANTITY (tn or hl)	VALUE (In Euro)	ABSOLUTE (tn or hl)	%	ABSOLUTE (in Euro)	%
CLICK TOTALS FOR GRAPHICS	(a)	(b)	(c)	(d)	(e)=(a)-(c)	(f)=(e)/(c)*%	(g)=(b)-(d)	(h)=(g)/(d)*%
Blé panifiable	234.804	24.174.626	76.703	7.911.093	158.101	206%	16.263.534	206%
Orge	5.392.053	547.128.815	925.385	94.445.665	4.466.668	483%	452.683.150	479%
Seigle								
Sorgho			502	50.812	-502	-100%	-50.812	-100%
Mais	3.825	387.478	556.111	56.510.040	-552.286	-99%	-56.122.562	-99%
TOTAL CEREALES	5.630.682	571.690.919	1.558.701	158.917.609	4.071.981	261%	412.773.310	260%
TOTAL RIZ								
Alcool Public	720.271	26.734.734	1.600.049	59.312.261	-879.778	-55%	-32.577.527	-55%
Alcool Mixte	1.179	4.676	11.067	180.503	-9.888	-89%	-175.828	-97%
TOTAL ALCOOL (HL 100%)	721.450	26.739.409	1.611.116	59.492.764	-889.666	-55%	-32.753.355	-55%
LEP	221.573	330.674.415	268.527	400.661.815	-46.953	-17%	-69.987.400	-17%
Beurre	19.614	42.721.641	78.688	171.396.018	-59.074	-75%	-128.674.376	-75%
TOTAL LAIT ET BEURRE	241.187	373.396.056	347.215	572.057.832	-106.027	-31%	-198.661.776	-35%
Sucre Blanc	9	3.052	34.080	10.975.054	-34.071	-100%	-10.972.002	-100%
Sucre Brut								
TOTAL SUCRE	9	3.052	34.080	10.975.054	-34.071	-100%	-10.972.002	-100%
Bov. carc.								
Bov. des.								
Eq. carc.								
TOTAL EQ. CARCASSES								
GRAND TOTAL		971.829.437		801.443.260			170.386.177	21%

SOURCE : The declarations of the Member States before controls.

(1) Period 13/2009 annual declaration

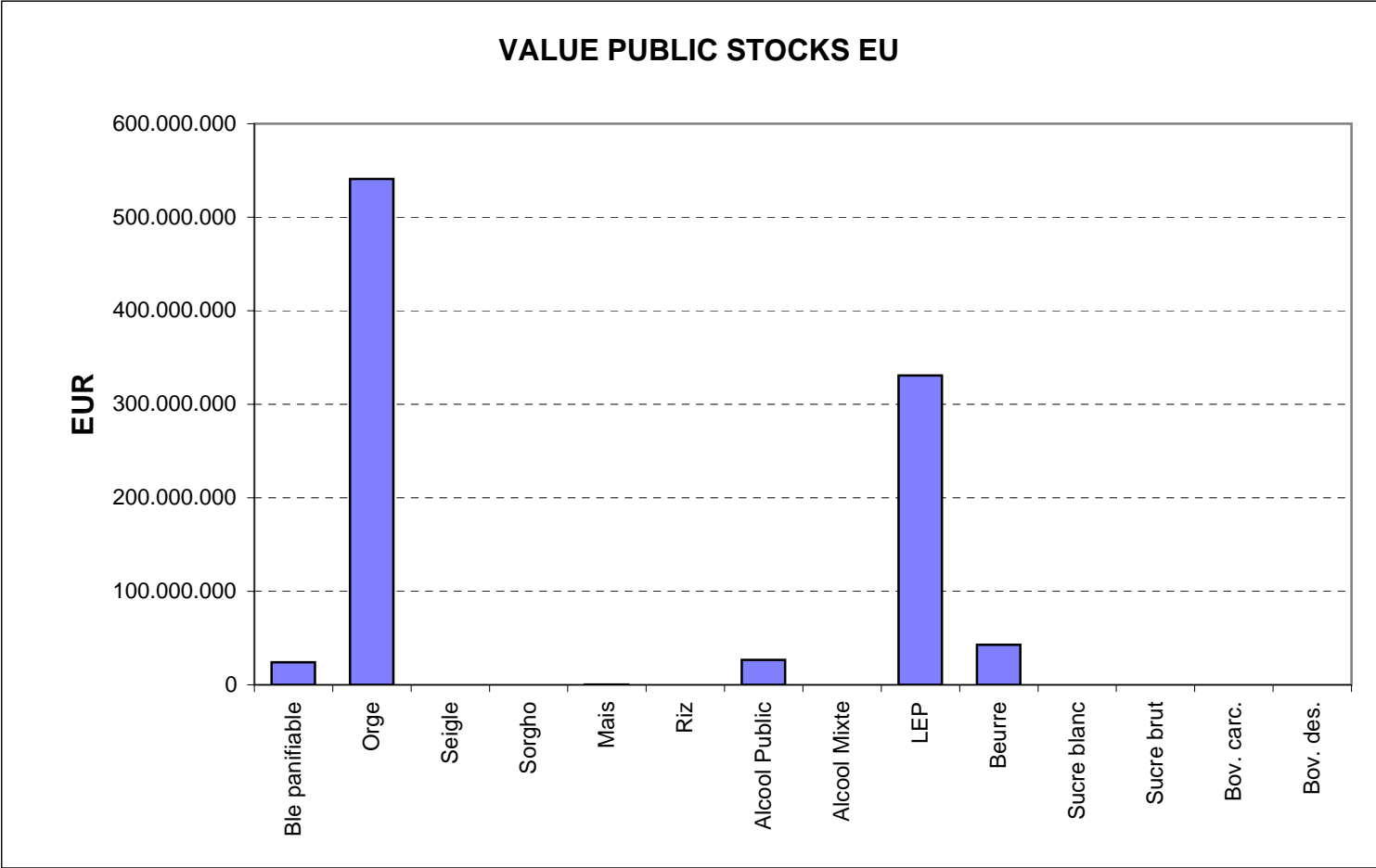
quantities are expressed in
tonnes (alcohol in hl 100%)

ACCOUNTING VALUE OF THE PUBLIC INTERVENTION STOCKS AS AT : 31-ago-10
(BEFORE THE COMPLEMENTARY DEPRECIATION)

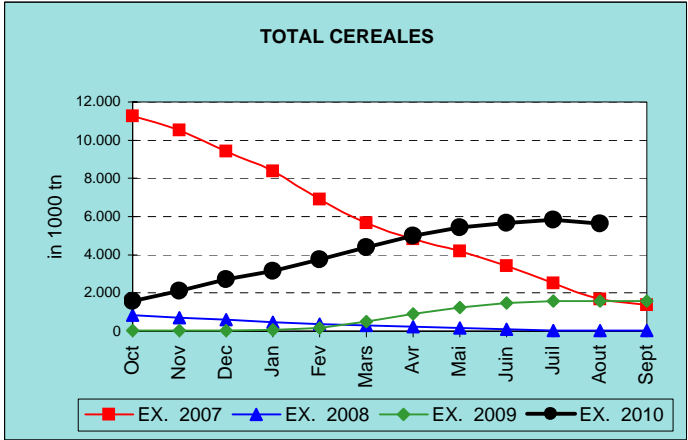
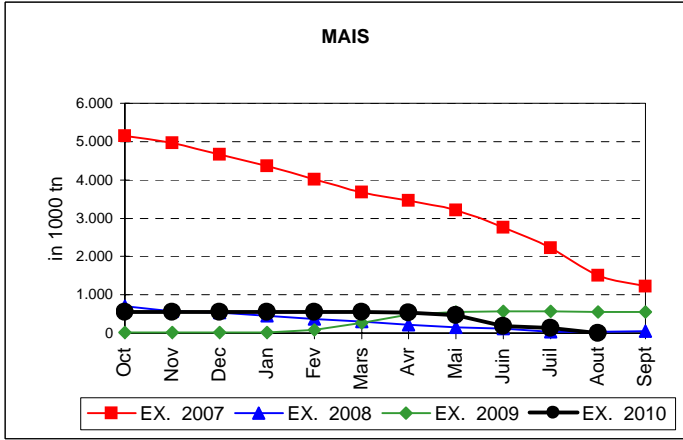
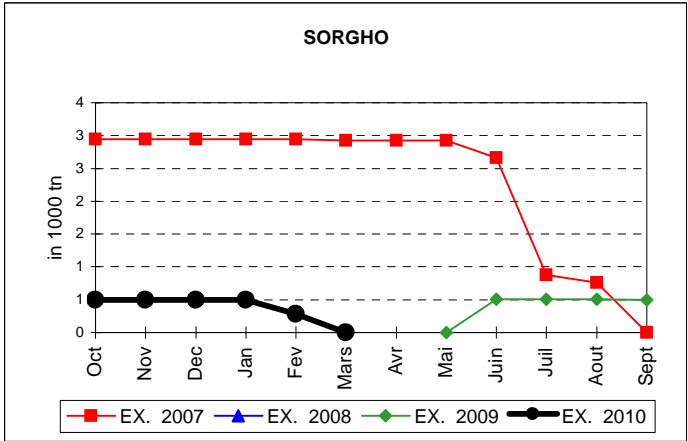
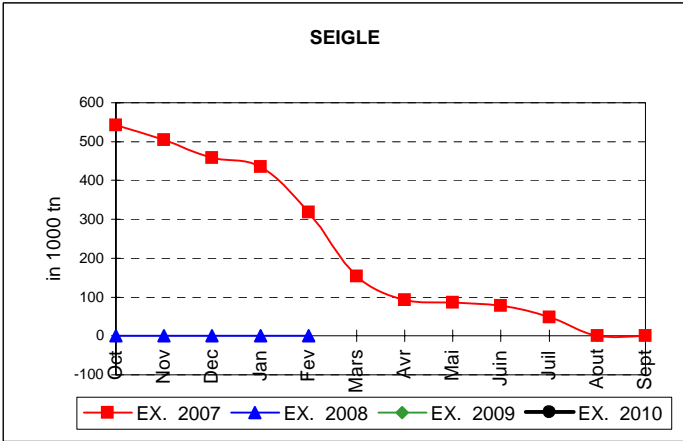
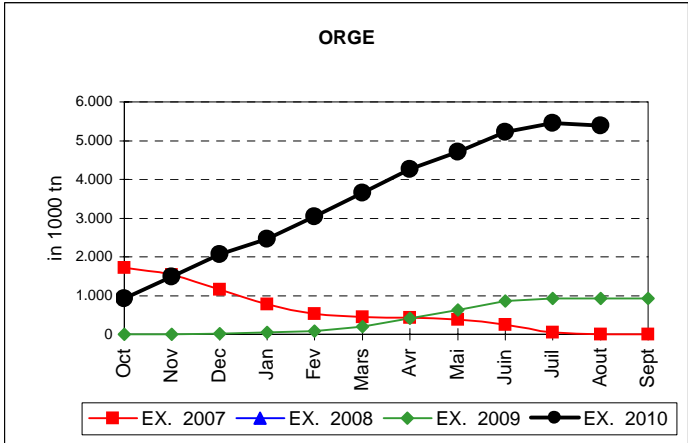
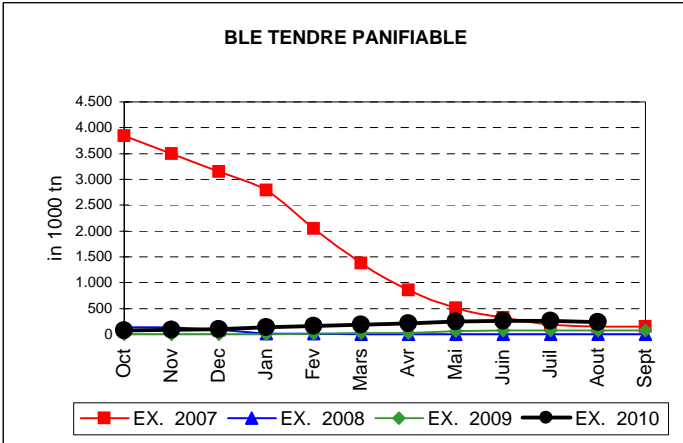
AGRI I.4
J. FLORET tel. 53236

Produits		BE	BG	CZ	DK	DE	EE	IE	EL	ES	FR	IT	CY	LV	LT	LU	HU	MT	NL	OS	PL	PO	RO	SI	SK	FIN	SE	UK	TOTAL	
BLE PANIF	quant.		3.587	61.338											91	119.228					619				27.059	22.882			234.804	
	valeur		363.424	6.435.614												8.867	12.212.551					62.615				2.747.318	2.344.238			24.174.626
ORGE	quant.	34.950	42.101	282.466	59.583	1.683.607	74.798				928.913			22.993	152.286		364.249			40.689	365.269		61.433		155.684	823.595	148.302	151.136	5.392.053	
	valeur	3.548.459	4.348.146	29.786.035	6.069.142	169.202.498	7.556.077				94.544.754			2.317.023	15.341.257		37.153.363			4.131.163	36.830.113		6.273.544		15.847.100	84.121.944	15.089.687	14.968.508	547.128.815	
SEIGLE	quant.																													
SEIGLE	valeur																													
SORGHO	quant.																													
SORGHO	valeur																													
MAIS	quant.																3.825												3.825	
	valeur																387.478												387.478	
TOT.CER	quant.	34.950	45.687	343.804	59.583	1.683.607	74.798				928.913			22.993	152.377		487.302			40.689	365.888		61.433		182.743	846.476	148.302	151.136	5.630.682	
RIZ	quant.																													
RIZ	valeur																													
ALC.P.	quant.								60.269	397.302	94.115	34.359	7.219				54.876					72.130							720.271	
	valeur								2.229.366	14.787.587	3.483.209	1.270.261	266.516				2.030.412					2.667.383							26.734.734	
ALC.M.	quant.										1.178	1																	1.179	
	valeur										4.664	11																	4.676	
TOT.ALC.	quant.								60.269	397.302	95.293	34.360	7.219				54.876					72.130							721.450	
LEP	quant.	24.122		3.166		63.763	1.665	32.170		1.382	40.101						9.132			19.860	2.876	2.024				1.052	3.614	16.646	221.573	
	valeur	35.721.397		4.987.629		94.872.856	2.382.152	48.058.217		2.105.975	60.082.601						13.686.517			29.689.284	4.264.447	3.029.954				1.575.738	5.411.965	24.805.683	330.674.415	
BEURRE	quant.	0				1.536	182			2.736	6.323					1.363			3.393	489	3.593								19.614	
	valeur	981				3.347.345	371.083			5.960.513	13.776.781					2.970.454			7.395.311	1.066.793	7.832.381								42.721.641	
TOT L&B	quant.	24.122		3.166		65.298	1.847	32.170		4.118	46.424					10.494			23.252		3.365	5.617				1.052	3.614	16.646	241.187	
S. BLANC	quant.			9																									9	
	valeur			3.052																									3.052	
S. BRUT	quant.																													
S. BRUT	valeur																													
TOT. SUC	quant.			9																									9	
BOV.QUA	quant.																													
	valeur																													
BOV.DES	quant.																													
	valeur																													
EQ. CARC	quant.																													
TOT EQ	quant.																													
EU TOTAL	valeur	39.270.837	4.711.570	41.212.330	6.069.142	267.422.700	10.309.312	48.058.217	2.229.366	22.854.074	171.892.009	1.270.272	266.516	2.317.023	32.007.096	51.783.804			37.084.595	4.131.163	42.223.966	13.529.717	6.273.544		18.594.418	88.041.921	20.501.652	39.774.191	971.829.437	

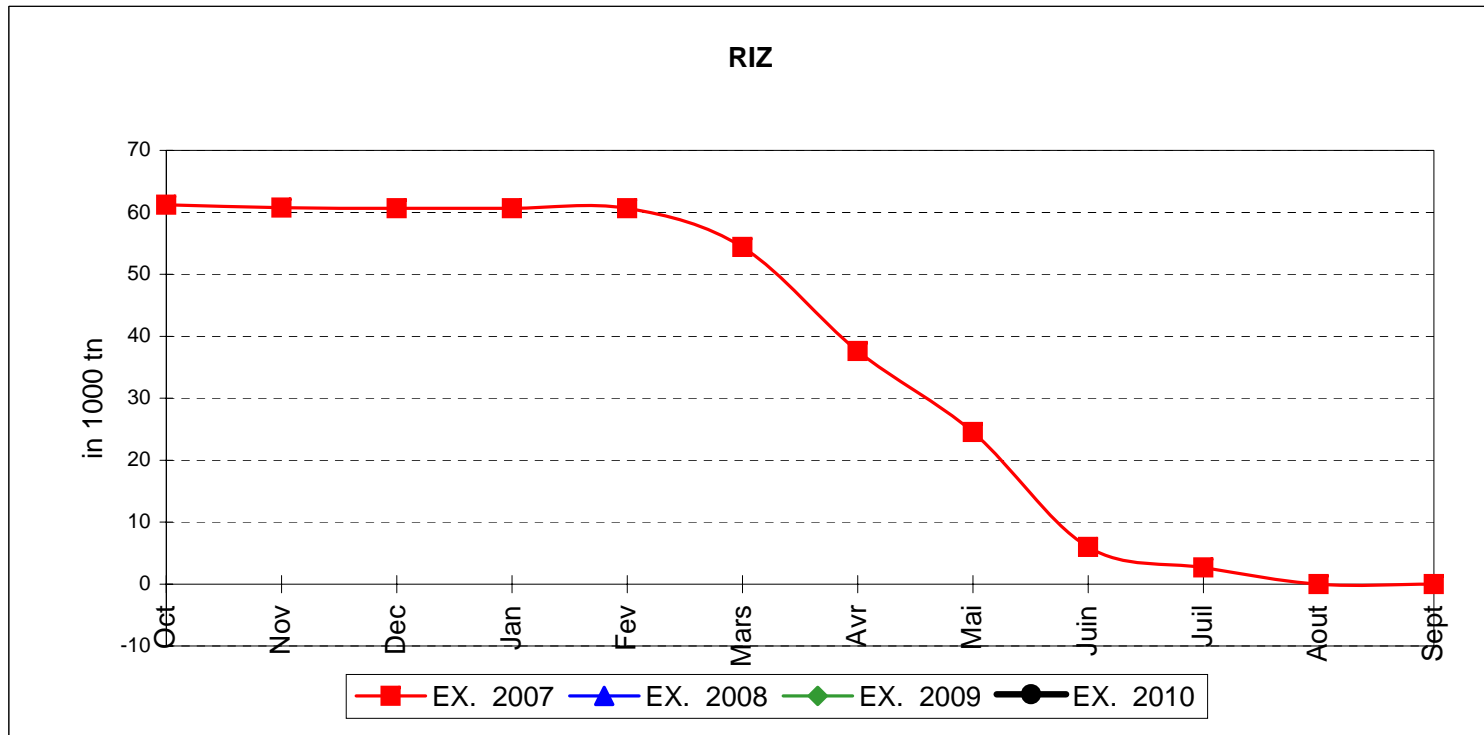
PUBLIC INTERVENTION STOCKS



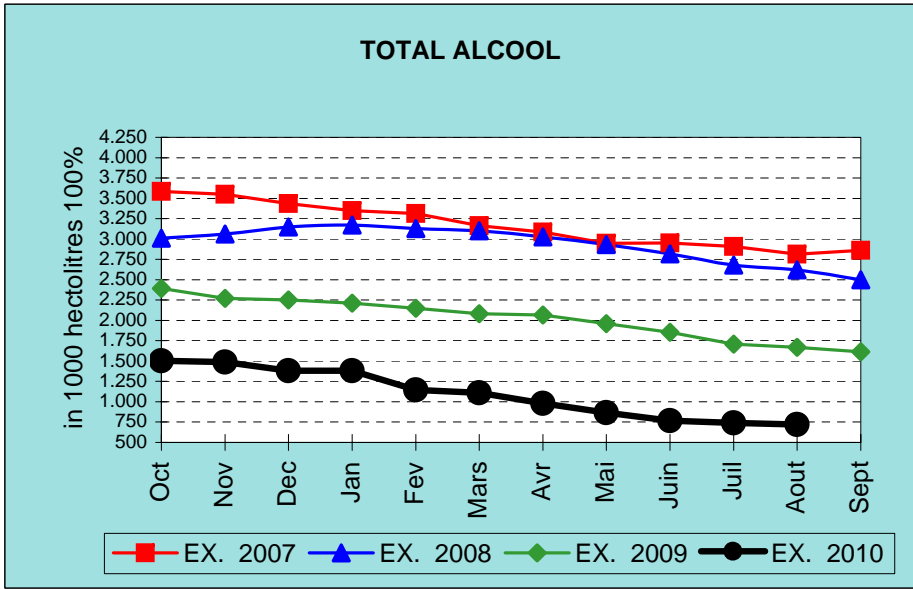
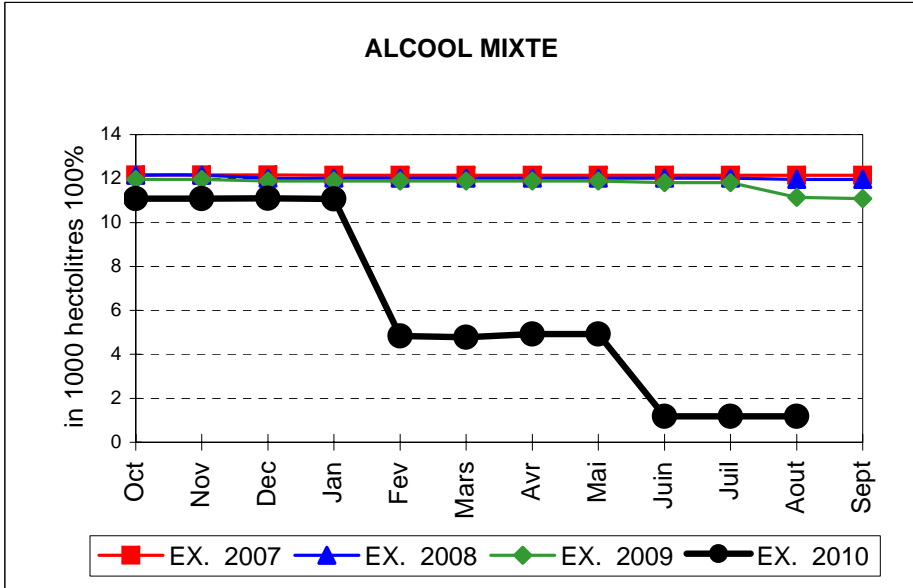
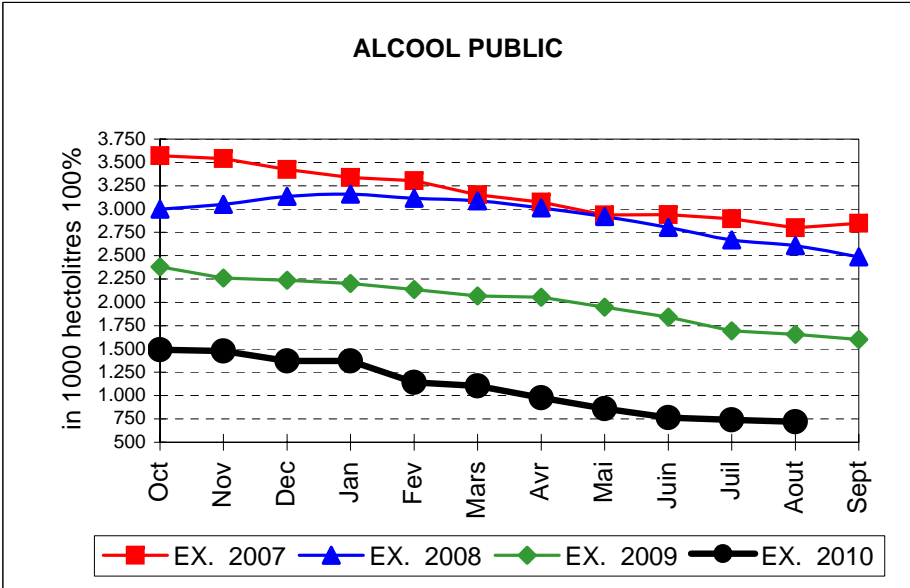
EVOLUTION IN QUANTITIES OF PUBLIC INTERVENTION STOCKS



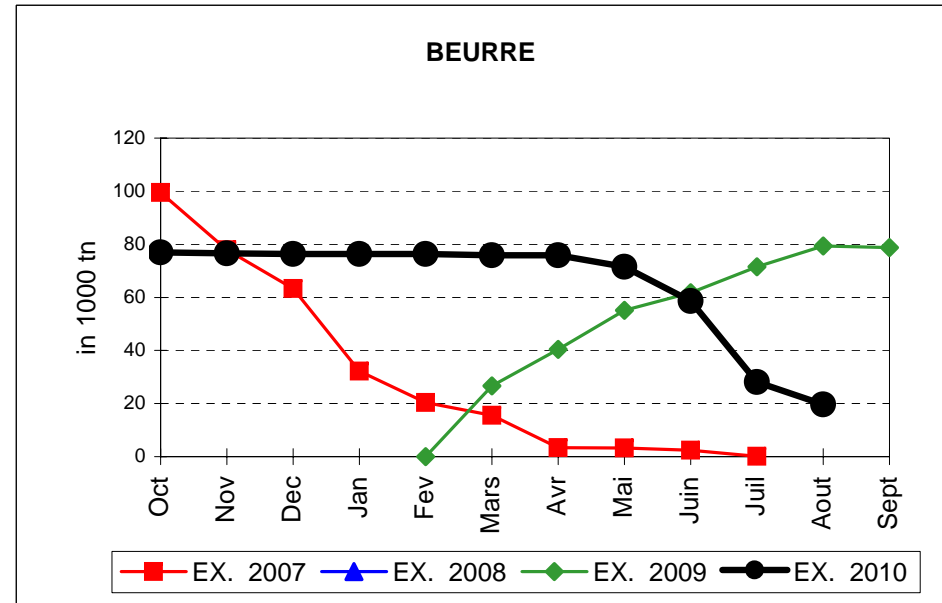
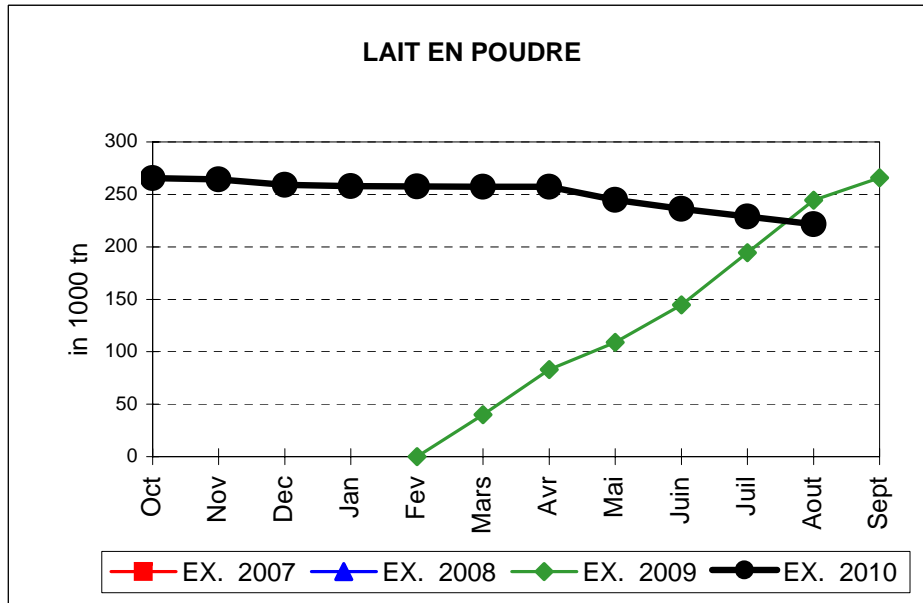
EVOLUTION IN QUANTITIES OF PUBLIC INTERVENTION STOCKS



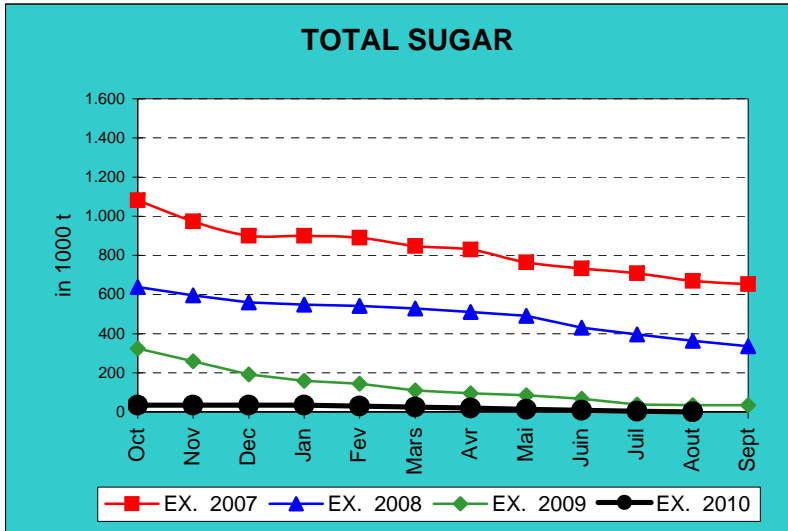
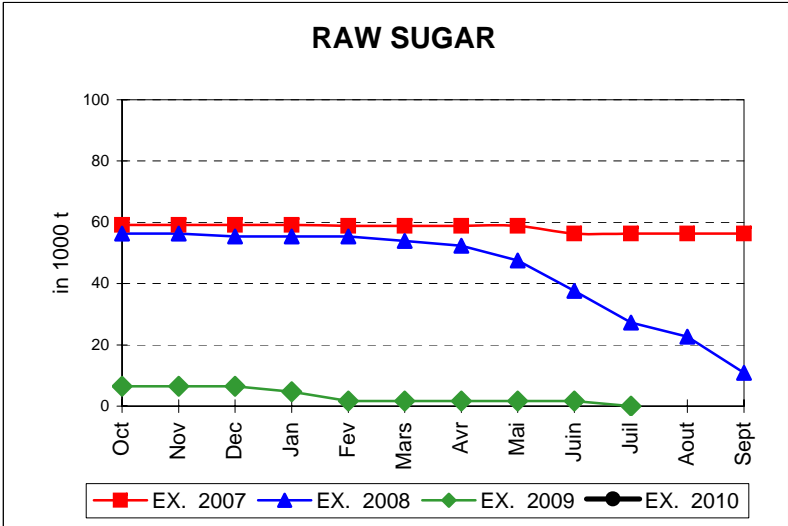
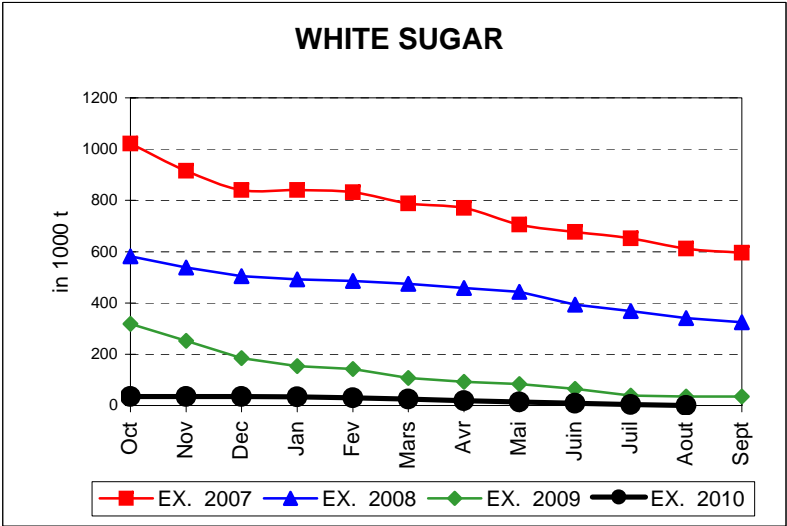
EVOLUTION IN QUANTITIES OF PUBLIC INTERVENTION STOCKS



EVOLUTION IN QUANTITIES OF PUBLIC INTERVENTION STOCKS

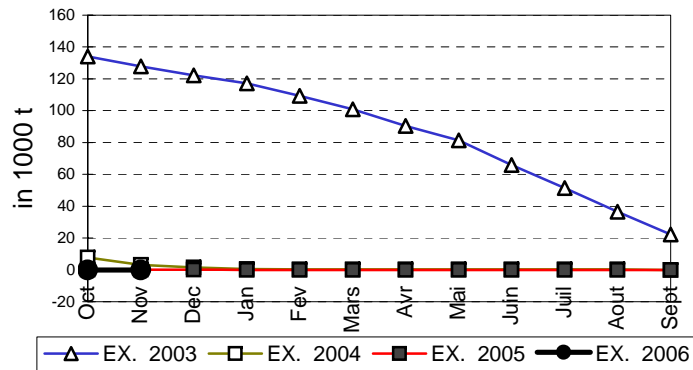


EVOLUTION IN QUANTITIES OF PUBLIC INTERVENTION STOCKS

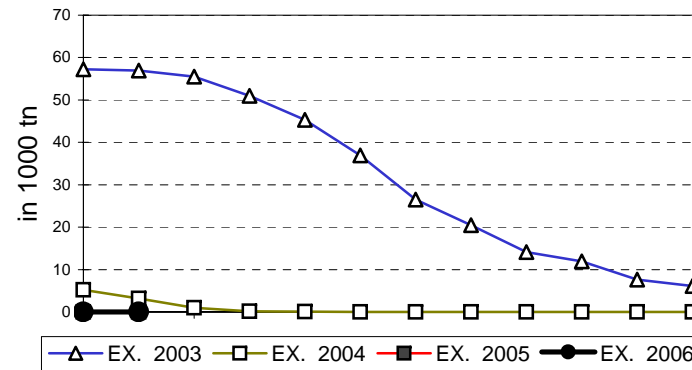


EVOLUTION IN QUANTITIES OF PUBLIC INTERVENTION STOCKS

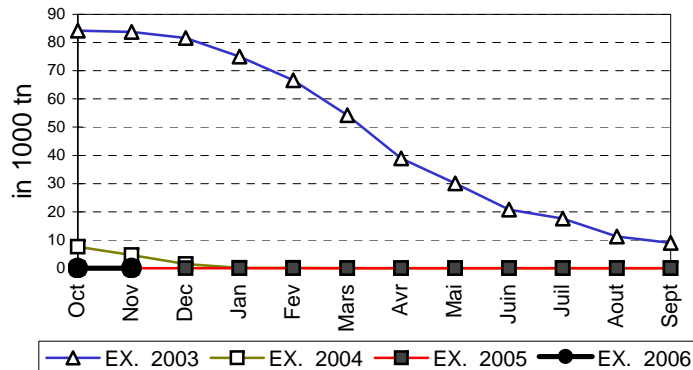
VIANDE BOVINE CARCASSES



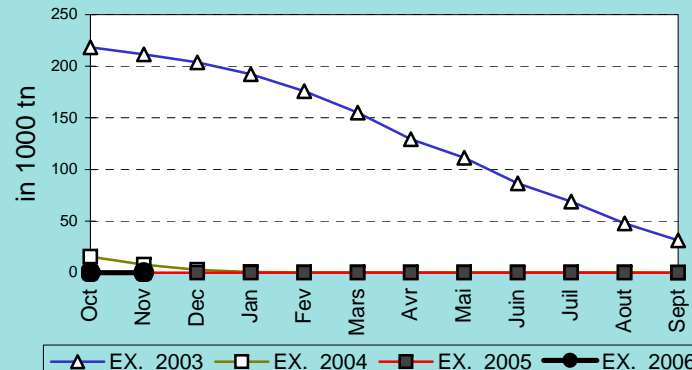
VIANDE BOVINE DESOSSEE



VIANDE DESOSSEE EN EQUIVALENT CARCASSES



TOTAL VIANDE EN EQUIVALENT CARCASSES



COMPARED WITH PREVIOUS MONTH

EU TOTAL	31-ago-10		31-jul-10		CHANGE IN QTY		CHANGE IN VALUE	
	QUANTITY (tn or hl)	VALUE (in Euro)	QUANTITY (tn or hl)	VALUE (in Euro)	ABSOLUTE (tn or hl)	%	ABSOLUTE (in Euro)	%
CLICK TOTALS FOR GRAPHICS	(a)	(b)	(c)	(d)	(e)=(a)-(c)	(f)=(e)/(c)*%	(g)=(b)-(d)	(h)=(g)/(d)*%
Blé panifiable	234.804	24.174.626	265.175	27.287.342	-30.371	-11%	-3.112.716	-11%
Orge	5.392.053	547.128.815	5.449.323	553.072.708	-57.270	-1%	-5.943.893	-1%
Seigle								
Sorgho								
Mais	3.825	387.478	128.326	12.999.380	-124.501	-97%	-12.611.902	-97%
TOTAL CEREALES	5.630.682	571.690.919	5.842.823	593.359.430	-212.142	-4%	-21.668.511	-4%
TOTAL RIZ								
Alcool Public	720.271	26.734.734	740.720	27.491.179	-20.449	-3%	-756.445	-3%
Alcool Mixte	1.179	4.676	1.173	4.655	5	0%	20	0%
TOTAL ALCOOL (HL 100%)	721.450	26.739.409	741.894	27.495.834	-20.444	-3%	-756.424	-3%
LEP	221.573	330.674.415	228.844	341.540.161	-7.270	-3%	-10.865.746	-3%
Beurre	19.614	42.721.641	28.115	61.220.824	-8.501	-30%	-18.499.183	-30%
TOTAL LAIT ET BEURRE	241.187	373.396.056	256.959	402.760.985	-15.771	-6%	-29.364.928	-7%
Sucre blanc	9	3.052	3.132	1.013.340	-3.123	-100%	-1.010.288	-100%
Sucre brut								
TOTAL SUCRE	9	3.052	3.132	1.013.340	-3.123	-100%	-1.010.288	-100%
Bov. carc.								
Bov. des.								
Eq. carc.								
TOTAL EQ. CARCASSES								
GRAND TOTAL		971.829.437		1.024.629.588			-52.800.152	-5%

SOURCE : The declarations of the Member States before controls.

COMPARED WITH PREVIOUS YEAR

EU TOTAL	31-ago-10		31-ago-09		CHANGE IN QTY		CHANGE IN VALUE	
	QUANTITY (tn or hl)	VALUE (in Euro)	QUANTITY (tn or hl)	VALUE (In Euro)	ABSOLUTE (tn or hl)	%	ABSOLUTE (in Euro)	%
CLICK TOTALS FOR GRAPHICS	(a)	(b)	(c)	(d)	(e)=(a)-(c)	(f)=(e)/(c)*%	(g)=(b)-(d)	(h)=(g)/(d)*%
Blé panifiable	234.804	24.174.626	76.728	8.381.830	158.076	206%	15.792.796	188%
Orge	5.392.053	547.128.815	925.477	98.654.003	4.466.575	483%	448.474.812	455%
Seigle								
Sorgho			502	51.417	-502	-100%	-51.417	-100%
Mais	3.825	387.478	558.196	57.573.850	-554.371	-99%	-57.186.373	-99%
TOTAL CEREALES	5.630.682	571.690.919	1.560.903	164.661.101	4.069.779	261%	407.029.818	247%
TOTAL RIZ								
Alcool Public	720.271	26.734.734	1.657.707	70.890.220	-937.435	-57%	-44.155.486	-62%
Alcool Mixte	1.179	4.676	11.145	181.567	-9.967	-89%	-176.892	-97%
TOTAL ALCOOL (HL 100%)	721.450	26.739.409	1.668.852	71.071.787	-947.402	-57%	-44.332.378	-62%
LEP	221.573	330.674.415	244.314	412.252.353	-22.741	-9%	-81.577.938	-20%
Beurre	19.614	42.721.641	79.404	174.705.656	-59.789	-75%	-131.984.015	-76%
TOTAL LAIT ET BEURRE	241.187	373.396.056	323.718	586.958.009	-82.531	-25%	-213.561.953	-36%
Sucre blanc	9	3.052	34.832	11.618.733	-34.823	-100%	-11.615.681	-100%
Sucre brut								
TOTAL SUCRE	9	3.052	34.832	11.618.733	-34.823	-100%	-11.615.681	-100%
Bov. carc.								
Bov. des.								
Eq. carc.								
TOTAL EQ. CARCASSES								
GRAND TOTAL		971.829.437		834.309.631			137.519.806	16%

SOURCE :

The declarations of the Member States before controls.

THE PUBLIC STORAGE FLASH REPORT AS AT						31-ago-10			
ESPAÑA									
PRODUCTS	YEAR-TO-DATE		OPENING BALANCE		CHANGE IN QTY		CHANGE IN VALUE		
	QUANTITY (in tonnes or hl)	VALUE (in Euro)	QUANTITY (in tonnes or hl)	VALUE (in Euro)	ABSOLUTE (in tonnes or hl)	%	ABSOLUTE (in Euro)	%	
	(a)	(b)	(c)	(d)	(e)=(a)-(c)	(f)=(e)/(c)*%	(g)=(b)-(d)	(h)=(g)/(d)*%	
Ble panifiable									
Orge									
Seigle									
Sorgho									
Mais									
TOTAL CEREALES									
RIZ									
Alcool Public	397.302	14.787.587	574.043	21.365.391	-176.741	-31%	-6.577.804	-31%	
Alcool Mixte									
TOT. ALCOOL (HL)	397.302	14.787.587	574.043	21.365.391	-176.741	-31%	-6.577.804	-31%	
LEP	1.382	2.105.975	1.603	2.442.752	-221	-14%	-336.777	-14%	
Beurre	2.736	5.960.513	9.335	20.336.778	-6.599	-71%	-14.376.265	-71%	
TOTAL L & B	4.118	8.066.487	10.938	22.779.530	-6.820	-62%	-14.713.042	-65%	
Sucre Blanc									
Sucre Brut									
TOTAL SUCRE									
Bov. carc.									
Bov. des.									
Eq. carc.									
TOTAL EQ. CARC.									
GRAND TOTAL		22.854.074		44.144.921			-21.290.846	-48%	

31-ago-10

