

CHOOSE COUNTRY

EU TOTAL	YEAR-TO-DATE		OPENING BALANCE (1)		CHANGE IN QTY		CHANGE IN VALUE	
	QUANTITY (tn or hl)	VALUE (in Euro)	QUANTITY (tn or hl)	VALUE (In Euro)	ABSOLUTE (tn or hl)	%	ABSOLUTE (in Euro)	%
CLICK TOTALS FOR GRAPHICS	(a)	(b)	(c)	(d)	(e)=(a)-(c)	(f)=(e)/(c)*%	(g)=(b)-(d)	(h)=(g)/(d)*%
Blé panifiable			234.577	23.710.769	-234.577	-100%	-23.710.769	-100%
Orge	234.644	23.880.784	5.326.162	540.451.972	-5.091.518	-96%	-516.571.188	-96%
Seigle								
Sorgho								
Mais			3.142	318.234	-3.142	-100%	-318.234	-100%
TOTAL CEREALES	234.644	23.880.784	5.563.880	564.480.975	-5.329.236	-96%	-540.600.191	-96%
TOTAL RIZ								
Alcool Public	61.631	2.095.172	628.630	21.369.957	-566.999	-90%	-19.274.785	-90%
Alcool Mixte			1.173	4.645	-1.173	-100%	-4.645	-100%
TOTAL ALCOOL (HL 100%)	61.631	2.095.172	629.803	21.374.602	-568.172	-90%	-19.279.430	-90%
LEP	109.516	163.263.406	197.223	294.161.988	-87.707	-44%	-130.898.582	-44%
Beurre	1.044	2.250.251	1.545	3.343.770	-502	-32%	-1.093.519	-33%
TOTAL LAIT ET BEURRE	110.560	165.513.657	198.769	297.505.758	-88.209	-44%	-131.992.101	-44%
Sucre Blanc			9	3.052	-9	-100%	-3.052	-100%
Sucre Brut								
TOTAL SUCRE			9	3.052	-9	-100%	-3.052	-100%
Bov. carc.								
Bov. des.								
Eq. carc.								
TOTAL EQ. CARCASSES								
GRAND TOTAL		191.489.613		883.364.387			-691.874.774	-78%

SOURCE : The declarations of the Member States before controls.

(1) Period 13/2010 annual declaration

quantities are expressed in
tonnes (alcohol in hl 100%)

ACCOUNTING VALUE OF THE PUBLIC INTERVENTION STOCKS AS AT :
(BEFORE THE COMPLEMENTARY DEPRECIATION)

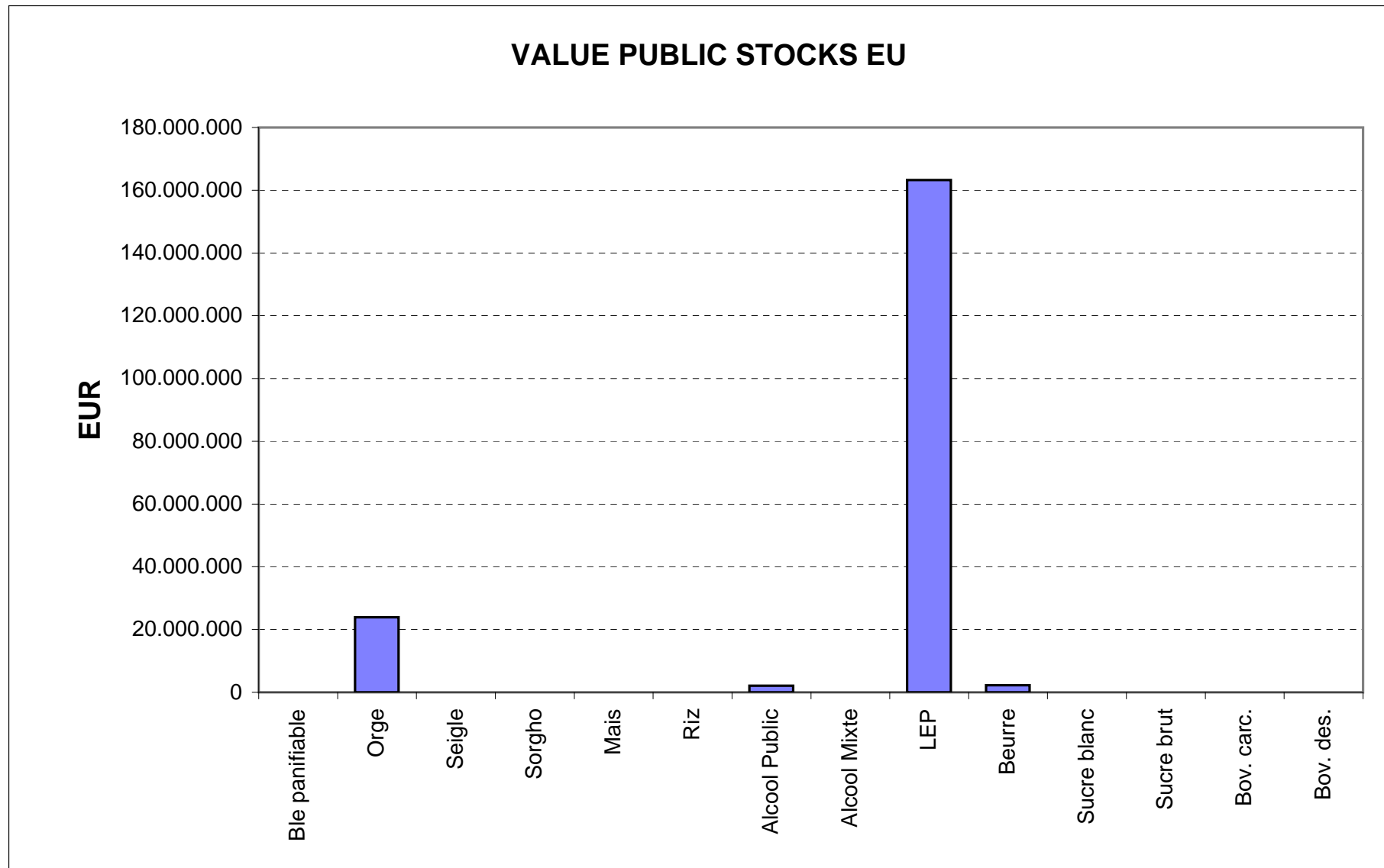
31-ago-11

AGRI I.4

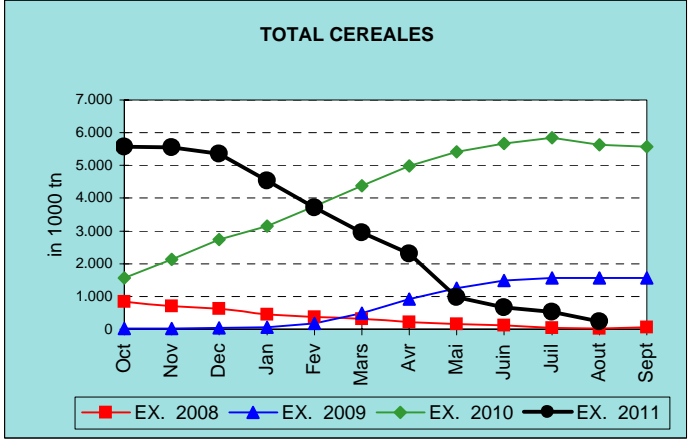
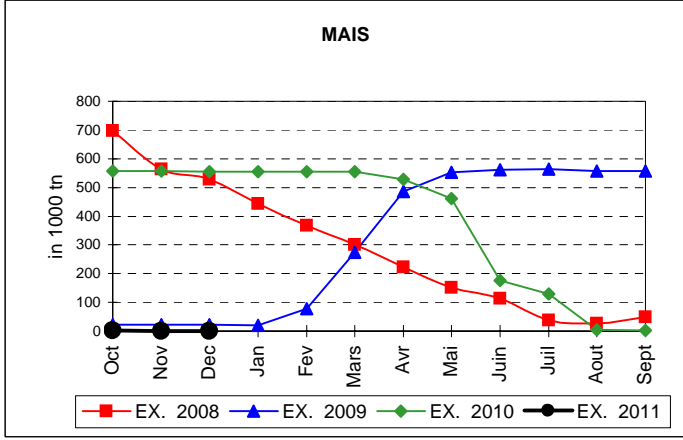
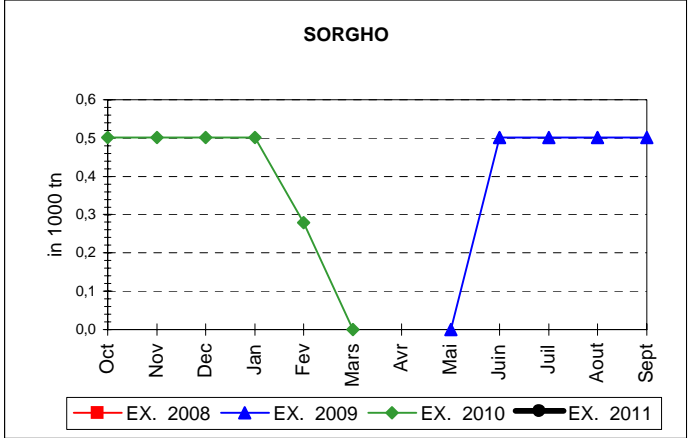
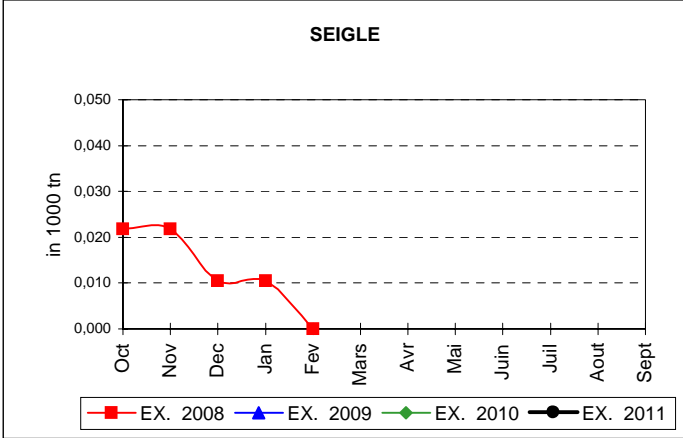
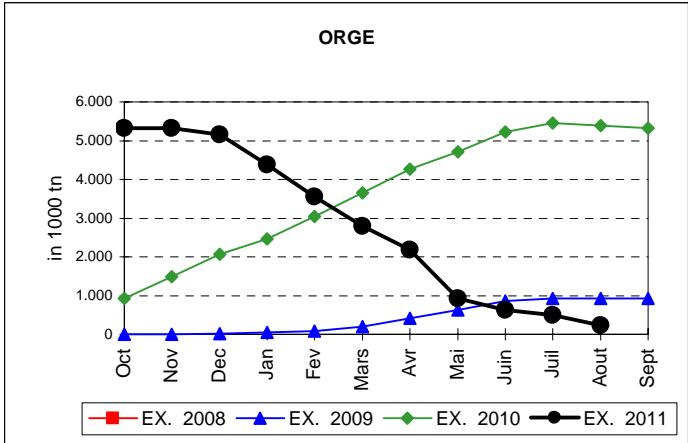
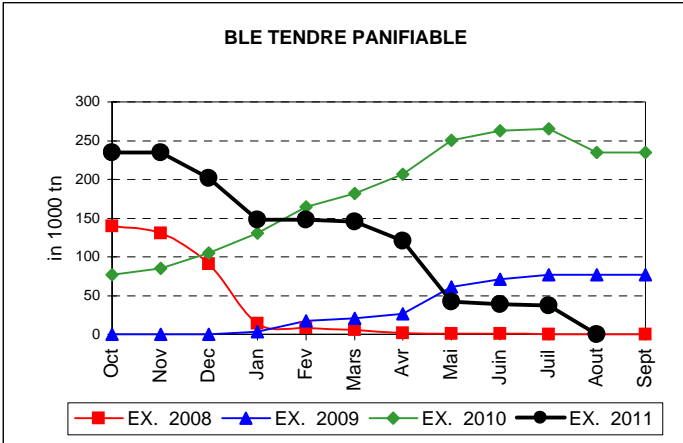
J. FLORET tel. 53236

Produits		BE	BG	CZ	DK	DE	EE	IE	EL	ES	FR	IT	CY	LV	LT	LU	HU	MT	NL	OS	PL	PO	RO	SI	SK	FIN	SE	UK	TOTAL		
BLE PANIF	quant.																														
	valeur																														
ORGE	quant.					16.856					397						69.313									75.350	64.825	7.904	234.644		
	valeur					1.694.032					40.368						7.069.950									7.697.743	6.595.916	782.775	23.880.784		
SEIGLE	quant.																														
	valeur																														
SORGHO	quant.																														
	valeur																														
MAIS	quant.																														
	valeur																														
TOT.CER	quant.					16.856					397						69.313									75.350	64.825	7.904	234.644		
	valeur																														
RIZ	quant.																														
	valeur																														
ALC.P.	quant.												7.112				54.519													61.631	
	valeur											241.520					1.853.652													2.095.172	
ALC.M.	quant.																														
	valeur																														
TOT.ALC.	quant.												7.112				54.519												61.631		
	valeur																														
LEP	quant.	10.216		330		33.590	1.077	24.416			16.545				3.586				3.527		734	607				98	191	14.599	109.516		
	valeur	15.128.956		520.420		49.978.040	1.541.006	36.475.378			24.789.380				5.374.172				5.272.168		1.088.094	909.158				146.040	285.723	21.754.871	163.263.406		
BEURRE	quant.						182								862														1.044		
	valeur						371.083								1.879.168														2.250.251		
TOT L&B	quant.	10.216		330		33.590	1.259	24.416			16.545				4.448				3.527		734	607				98	191	14.599	110.560		
	valeur																														
S. BLANC	quant.																														
	valeur																														
S. BRUT	quant.																														
	valeur																														
TOT. SUC	quant.																														
BOV.QUA	quant.																														
	valeur																														
BOV.DES	quant.																														
	valeur																														
EQ. CARC	quant.																														
TOT EQ	quant.																														
EU TOTAL	valeur	15.128.956		520.420		51.672.073	1.912.088	36.475.378			24.829.748		241.520		7.253.340		8.923.603		5.272.168		1.088.094	909.158				7.843.783	6.881.639	22.537.646	191.489.613		

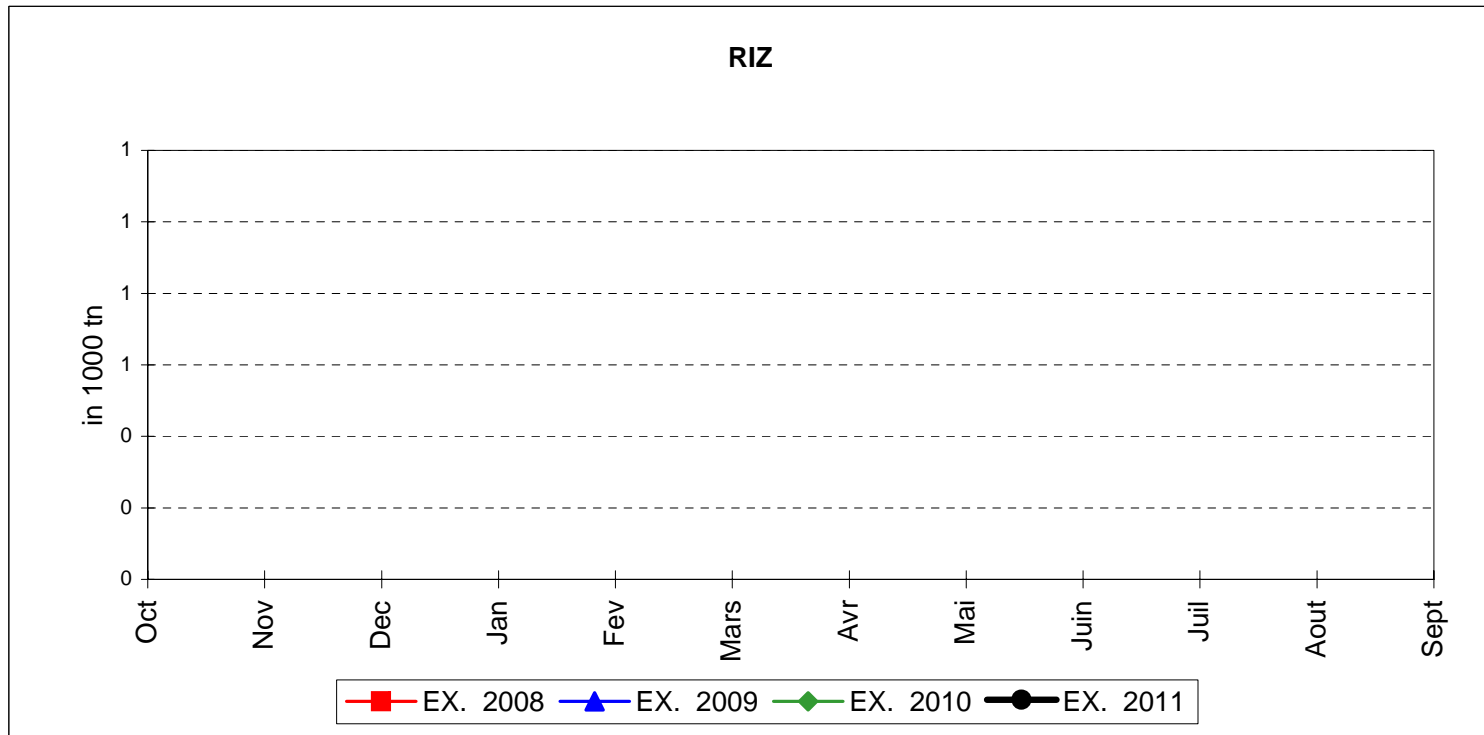
PUBLIC INTERVENTION STOCKS



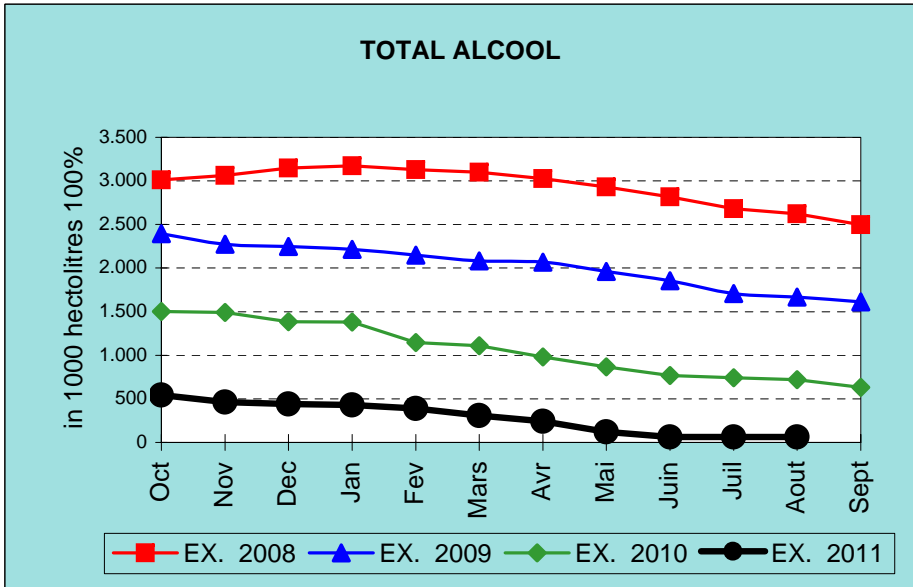
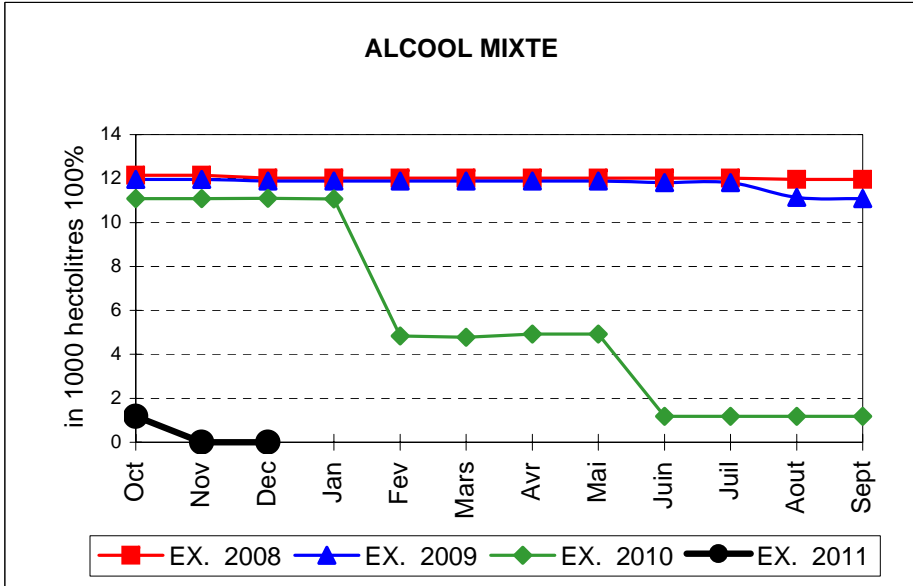
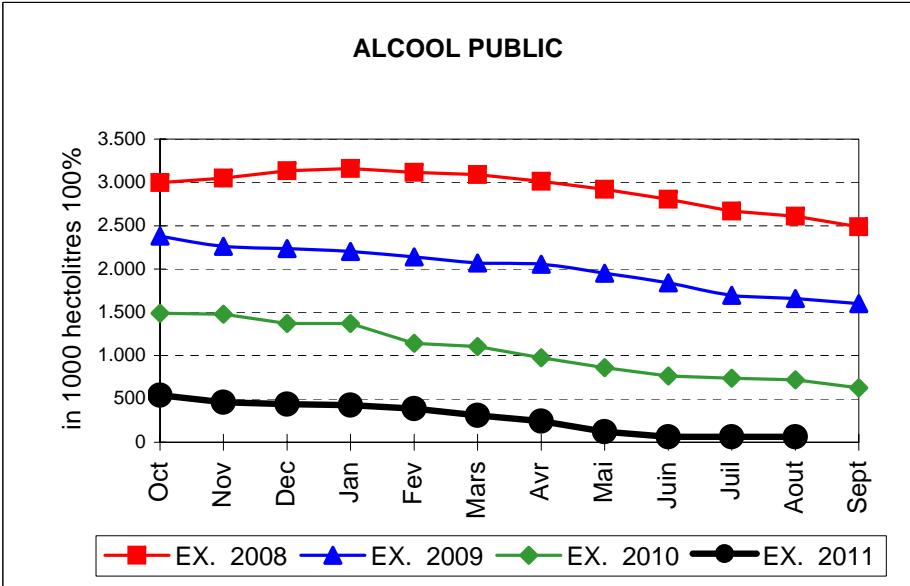
EVOLUTION IN QUANTITIES OF PUBLIC INTERVENTION STOCKS



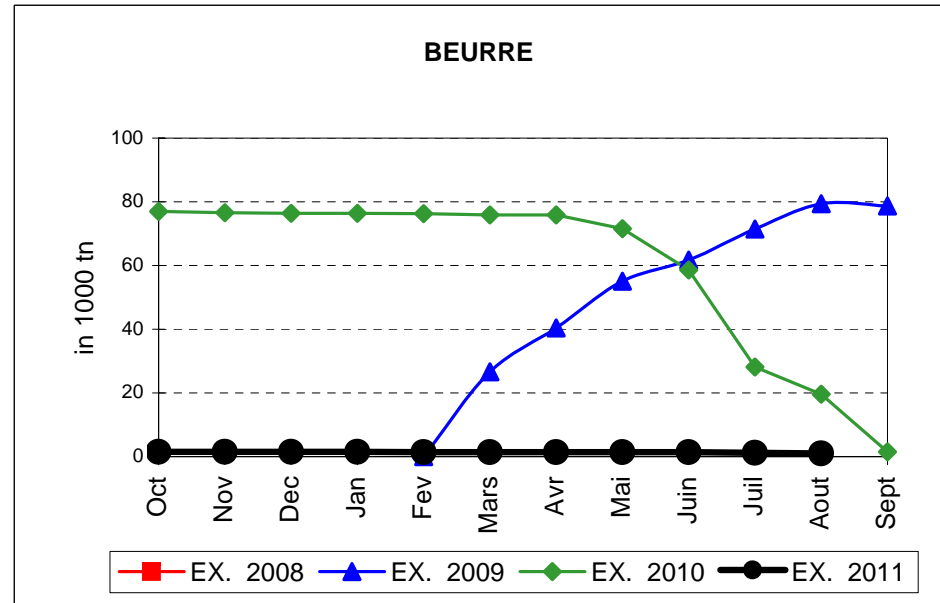
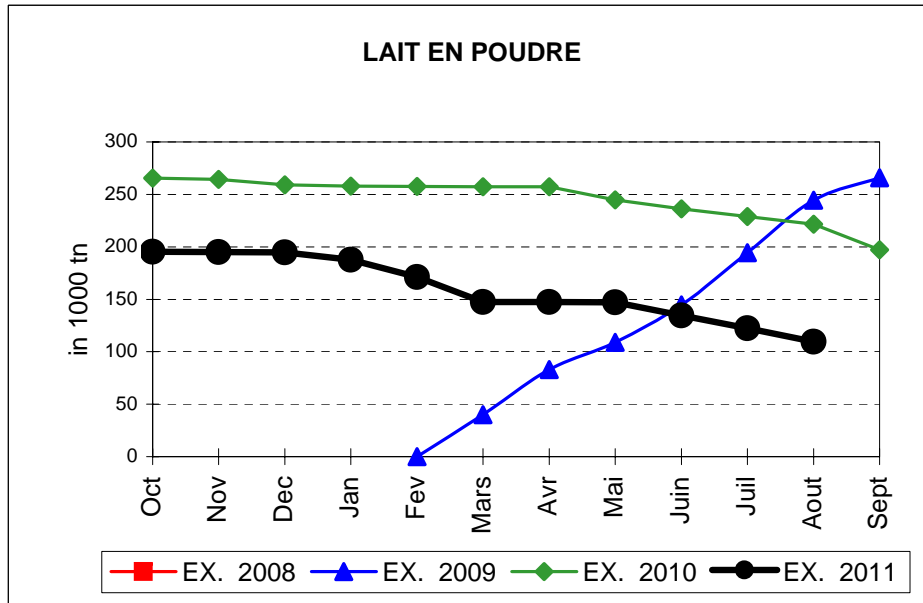
EVOLUTION IN QUANTITIES OF PUBLIC INTERVENTION STOCKS



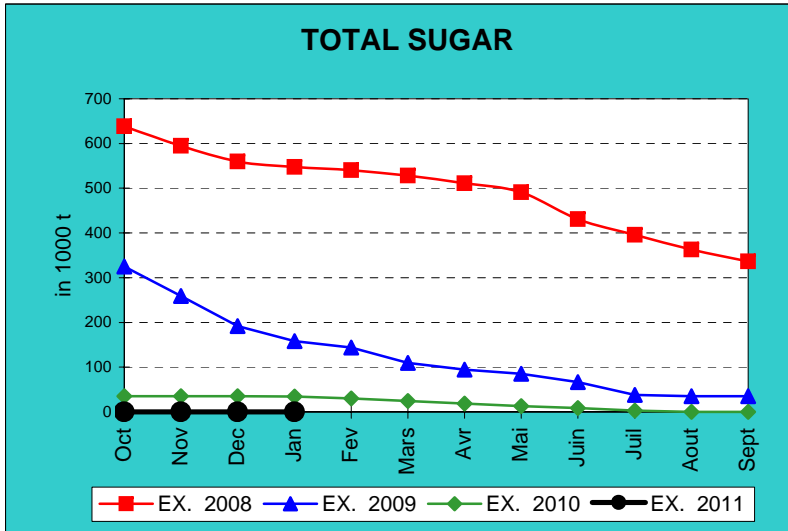
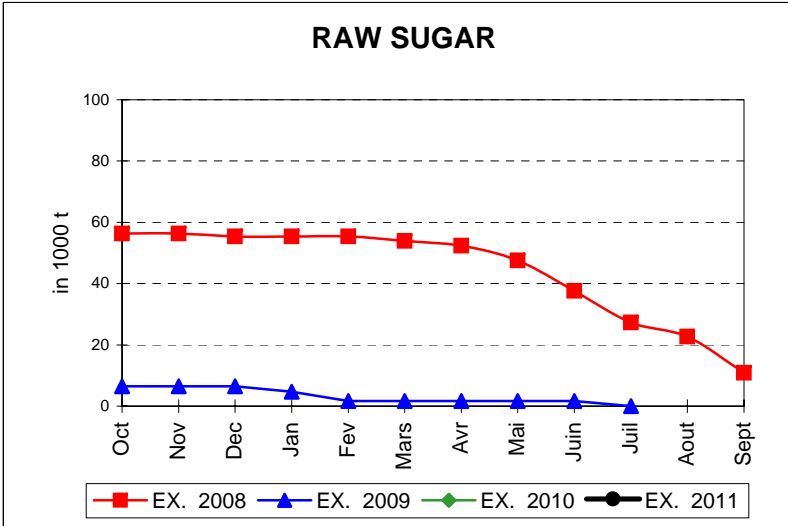
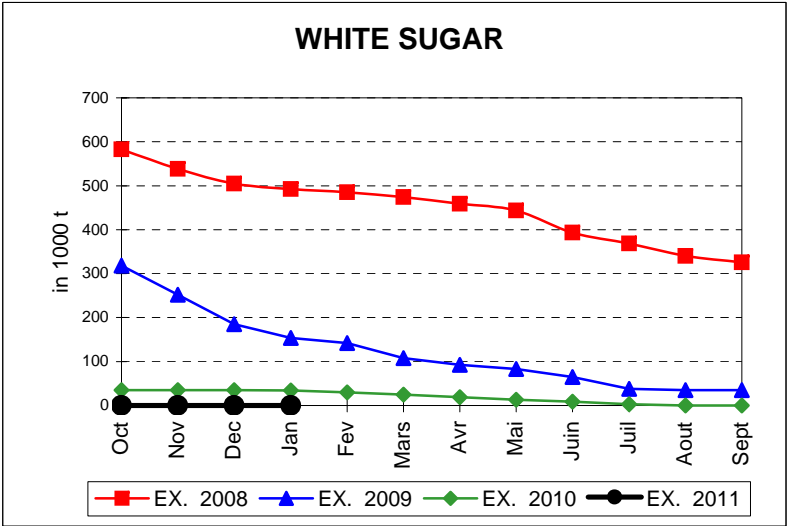
EVOLUTION IN QUANTITIES OF PUBLIC INTERVENTION STOCKS



EVOLUTION IN QUANTITIES OF PUBLIC INTERVENTION STOCKS

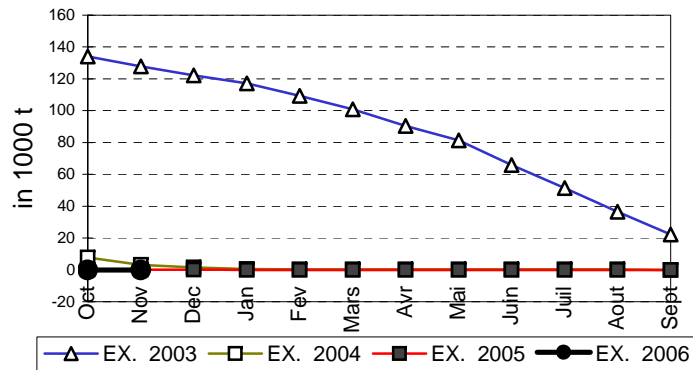


EVOLUTION IN QUANTITIES OF PUBLIC INTERVENTION STOCKS

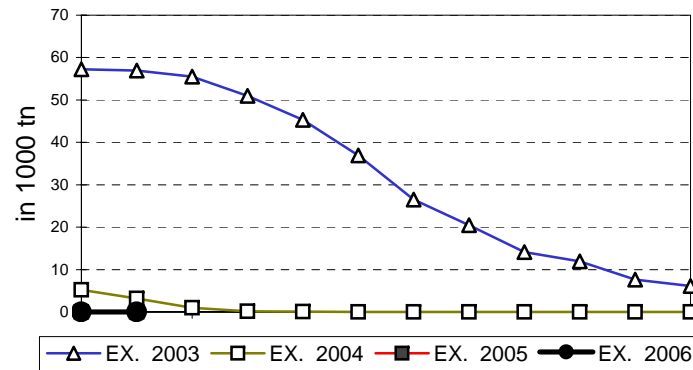


EVOLUTION IN QUANTITIES OF PUBLIC INTERVENTION STOCKS

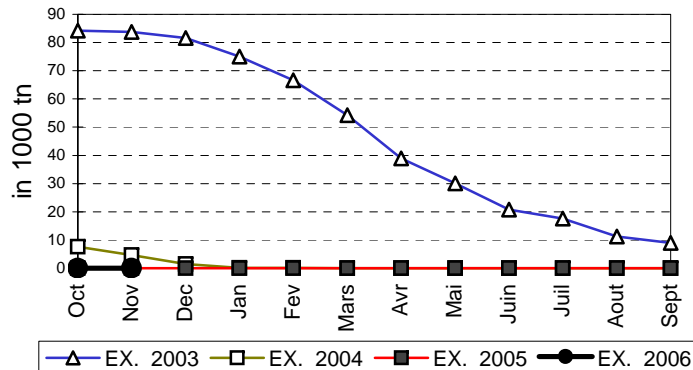
VIANDE BOVINE CARCASSES



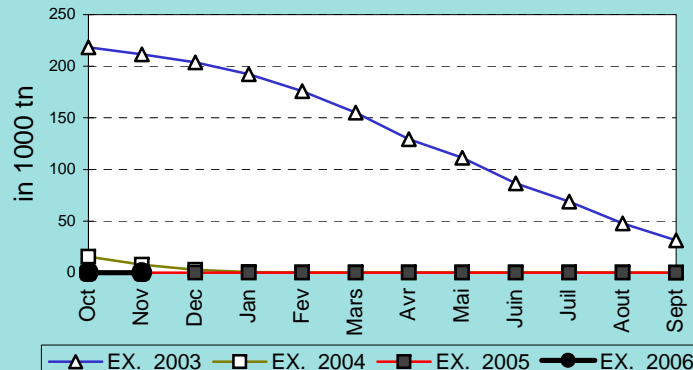
VIANDE BOVINE DESOSSEE



VIANDE DESOSSEE EN EQUIVALENT CARCASSES



TOTAL VIANDE EN EQUIVALENT CARCASSES



COMPARED WITH PREVIOUS MONTH

EU TOTAL	31-ago-11		31-jul-11		CHANGE IN QTY		CHANGE IN VALUE	
	QUANTITY (tn or hl)	VALUE (in Euro)	QUANTITY (tn or hl)	VALUE (In Euro)	ABSOLUTE (tn or hl)	%	ABSOLUTE (in Euro)	%
CLICK TOTALS FOR GRAPHICS	(a)	(b)	(c)	(d)	(e)=(a)-(c)	(f)=(e)/(c)*%	(g)=(b)-(d)	(h)=(g)/(d)*%
Blé panifiable			37.574	3.806.296	-37.574	-100%	-3.806.296	-100%
Orge	234.644	23.880.784	490.878	49.886.461	-256.234	-52%	-26.005.678	-52%
Seigle								
Sorgho								
Mais								
TOTAL CEREALES	234.644	23.880.784	528.453	53.692.757	-293.809	-56%	-29.811.973	-56%
TOTAL RIZ								
Alcool Public	61.631	2.095.172	61.661	2.096.179	-30	0%	-1.007	0%
Alcool Mixte								
TOTAL ALCOOL (HL 100%)	61.631	2.095.172	61.661	2.096.179	-30	0%	-1.007	0%
LEP	109.516	163.263.406	122.438	182.517.081	-12.922	-11%	-19.253.675	-11%
Beurre	1.044	2.250.251	1.195	2.579.811	-151	-13%	-329.560	-13%
TOTAL LAIT ET BEURRE	110.560	165.513.657	123.633	185.096.892	-13.074	-11%	-19.583.235	-11%
Sucre blanc								
Sucre brut								
TOTAL SUCRE								
Bov. carc.								
Bov. des.								
Eq. carc.								
TOTAL EQ. CARCASSES								
GRAND TOTAL		191.489.613		240.885.828			-49.396.215	-21%

SOURCE : The declarations of the Member States before controls.

COMPARED WITH PREVIOUS YEAR

EU TOTAL	31-ago-11		31-ago-10		CHANGE IN QTY		CHANGE IN VALUE	
	QUANTITY (tn or hl)	VALUE (in Euro)	QUANTITY (tn or hl)	VALUE (In Euro)	ABSOLUTE (tn or hl)	%	ABSOLUTE (in Euro)	%
CLICK TOTALS FOR GRAPHICS	(a)	(b)	(c)	(d)	(e)=(a)-(c)	(f)=(e)/(c)*%	(g)=(b)-(d)	(h)=(g)/(d)*%
Blé panifiable			234.804	24.174.626	-234.804	-100%	-24.174.626	-100%
Orge	234.644	23.880.784	5.392.053	547.128.815	-5.157.408	-96%	-523.248.031	-96%
Seigle								
Sorgho								
Mais			3.825	387.478	-3.825	-100%	-387.478	-100%
TOTAL CEREALES	234.644	23.880.784	5.630.682	571.690.919	-5.396.038	-96%	-547.810.135	-96%
TOTAL RIZ								
Alcool Public	61.631	2.095.172	720.271	26.734.734	-658.640	-91%	-24.639.562	-92%
Alcool Mixte			1.179	4.676	-1.179	-100%	-4.676	-100%
TOTAL ALCOOL (HL 100%)	61.631	2.095.172	721.450	26.739.409	-659.819	-91%	-24.644.237	-92%
LEP	109.516	163.263.406	221.573	330.674.415	-112.057	-51%	-167.411.009	-51%
Beurre	1.044	2.250.251	19.614	42.721.641	-18.570	-95%	-40.471.390	-95%
TOTAL LAIT ET BEURRE	110.560	165.513.657	241.187	373.396.056	-130.628	-54%	-207.882.399	-56%
Sucre blanc			9	3.052	-9	-100%	-3.052	-100%
Sucre brut								
TOTAL SUCRE			9	3.052	-9	-100%	-3.052	-100%
Bov. carc.								
Bov. des.								
Eq. carc.								
TOTAL EQ. CARCASSES								
GRAND TOTAL		191.489.613		971.829.437			-780.339.824	-80%

SOURCE :

The declarations of the Member States before controls.

THE PUBLIC STORAGE FLASH REPORT AS AT						31-ago-11			
ESPAÑA									
PRODUCTS	YEAR-TO-DATE		OPENING BALANCE		CHANGE IN QTY		CHANGE IN VALUE		
	QUANTITY (in tonnes or hl)	VALUE (in Euro)	QUANTITY (in tonnes or hl)	VALUE (in Euro)	ABSOLUTE (in tonnes or hl)	%	ABSOLUTE (in Euro)	%	
	(a)	(b)	(c)	(d)	(e)=(a)-(c)	(f)=(e)/(c)*%	(g)=(b)-(d)	(h)=(g)/(d)*%	
Ble panifiable									
Orge									
Seigle									
Sorgho									
Mais									
TOTAL CEREALES									
RIZ									
Alcool Public			373.725	12.711.227	-373.725	-100%	-12.711.227	-100%	
Alcool Mixte									
TOT. ALCOOL (HL)			373.725	12.711.227	-373.725	-100%	-12.711.227	-100%	
LEP									
Beurre									
TOTAL L & B									
Sucre Blanc									
Sucre Brut									
TOTAL SUCRE									
Bov. carc.									
Bov. des.									
Eq. carc.									
TOTAL EQ. CARC.									
GRAND TOTAL				12.711.227			-12.711.227	-100%	

31-ago-11

