

BEFORE COMPLEMENTARY DEPRECIATION

CHOOSE COUNTRY

EU TOTAL	YEAR-TO-DATE		OPENING BALANCE (1)		CHANGE IN QTY		CHANGE IN VALUE	
	QUANTITY (tn or hl)	VALUE (in Euro)	QUANTITY (tn or hl)	VALUE (In Euro)	ABSOLUTE (tn or hl)	%	ABSOLUTE (in Euro)	%
CLICK TOTALS FOR GRAPHICS	(a)	(b)	(c)	(d)	(e)=(a)-(c)	(f)=(e)/(c)*%	(g)=(b)-(d)	(h)=(g)/(d)*%
Blé panifiable	76.703	8.379.248	37	3.302	76.666	208843%	8.375.946	253658%
Orge	925.343	98.648.781			925.343		98.648.781	
Seigle								
Sorgho	502	51.349			502		51.349	
Mais	556.118	57.359.719	47.207	4.635.238	508.911	1078%	52.724.481	1137%
TOTAL CEREALES	1.558.665	164.439.096	47.244	4.638.540	1.511.421	3199%	159.800.556	3445%
TOTAL RIZ								
Alcool Public	1.601.004	68.456.981	2.484.895	104.449.771	-883.891	-36%	-35.992.790	-34%
Alcool Mixte	11.088	180.880	11.894	184.533	-806	-7%	-3.653	-2%
TOTAL ALCOOL (HL 100%)	1.612.092	68.637.861	2.496.789	104.634.304	-884.697	-35%	-35.996.443	-34%
LEP	265.671	448.035.996			265.671		448.035.996	
Beurre	78.704	173.020.048			78.704		173.020.048	
TOTAL LAIT ET BEURRE	344.375	621.056.044			344.375		621.056.044	
Sucre Blanc	34.832	11.618.733	325.254	108.760.191	-290.422	-89%	-97.141.457	-89%
Sucre Brut			10.902	2.635.883	-10.902	-100%	-2.635.883	-100%
TOTAL SUCRE	34.832	11.618.733	336.156	111.396.074	-301.324	-90%	-99.777.341	-90%
Bov. carc.								
Bov. des.								
Eq. carc.								
TOTAL EQ. CARCASSES								
GRAND TOTAL		865.751.735		220.668.917			645.082.817	292%

SOURCE : The declarations of the Member States before controls.

(1) Period 13/2008 annual declaration

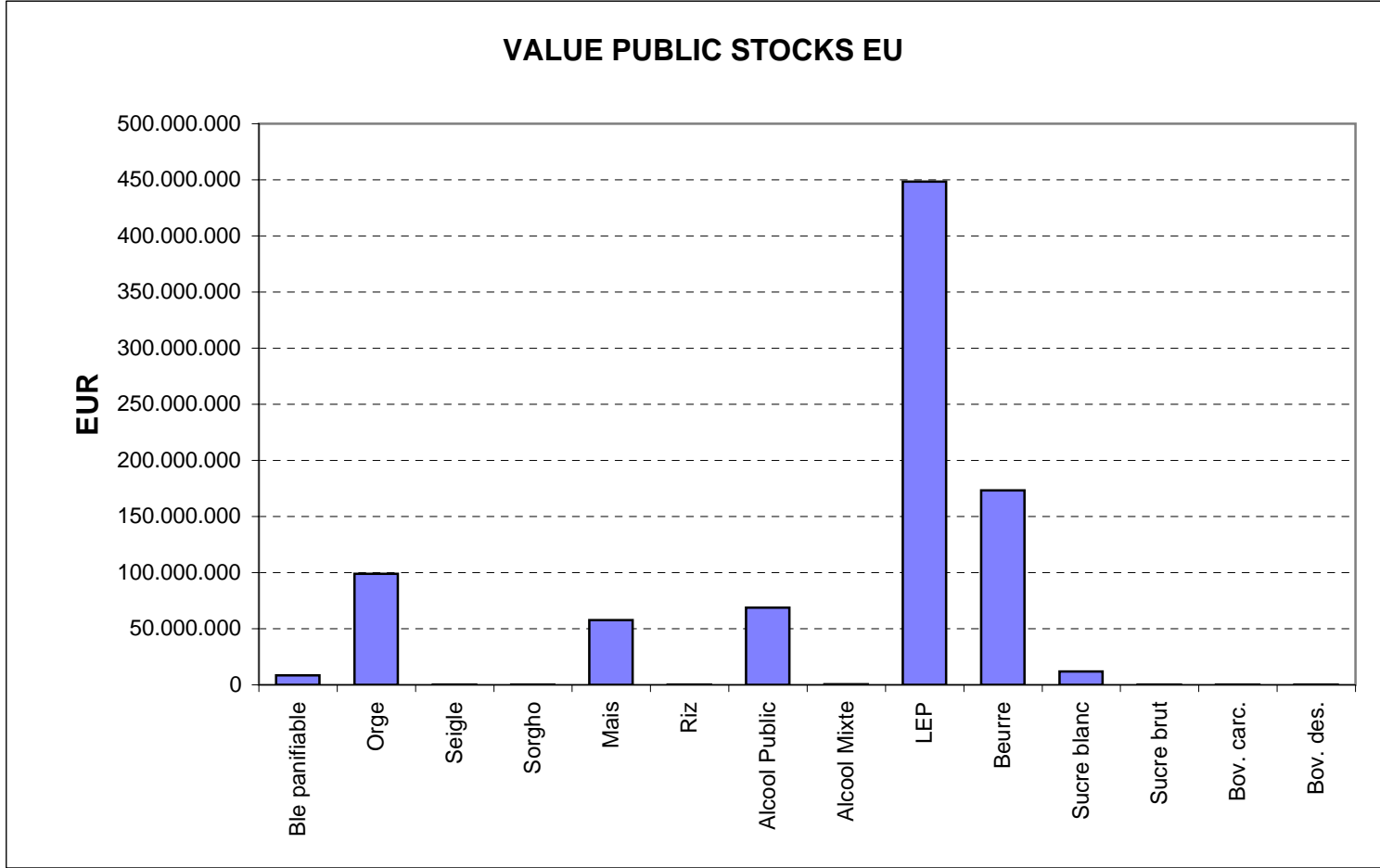
quantities are expressed in
tonnes (alcohol in hl 100%)

ACCOUNTING VALUE OF THE PUBLIC INTERVENTION STOCKS AS AT : 30-sep-09
(BEFORE THE COMPLEMENTARY DEPRECIATION)

AGRI I.4
J. FLORET tel. 53236

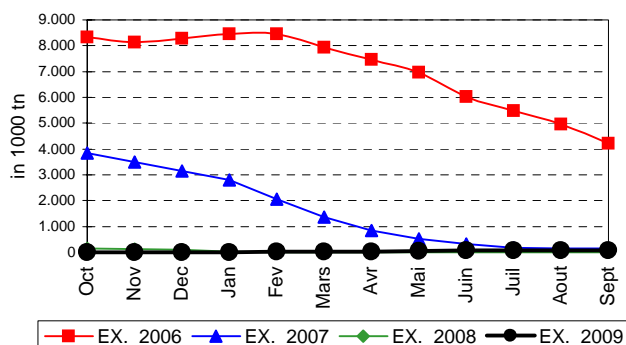
Produits		BE	BG	CZ	DK	DE	EE	IE	EL	ES	FR	IT	CY	LV	LT	LU	HU	MT	NL	OS	PL	PO	RO	SI	SK	FIN	SE	UK	TOTAL
BLE PANIF	quant.		3.013	31.984													30.405				1.382				9.171	748			76.703
	valeur		310.798	3.698.653														3.189.807				143.700				959.143	77.147		
ORGE	quant.			159.074		141.670	6.169								76.489		136.372			6.852	79.161				24.083	224.434	71.038		925.343
	valeur			18.525.724		14.710.971	646.738								7.939.559		14.387.212			711.698	8.274.742				2.508.478	23.509.501	7.434.157		98.648.781
SEIGLE	quant.																												
	valeur																												
SORGHO	quant.																502												502
	valeur																51.349												51.349
MAIS	quant.																445.713								110.404				556.118
	valeur																45.921.843								11.437.876				57.359.719
TOT.CER	quant.		3.013	191.058		141.670	6.169								76.489		612.992			6.852	80.543				143.659	225.182	71.038		1.558.665
RIZ	quant.																												
	valeur																												
ALC.P.	quant.								60.271	574.043	341.251	490.824	7.285				55.206												1.601.004
	valeur								2.580.825	24.282.018	14.322.318	21.066.172	332.865				2.342.407												
ALC.M.	quant.										1.017	10.071																	11.088
	valeur										4.026	176.854																	180.880
TOT.ALC.	quant.								60.271	574.043	342.268	500.896	7.285				55.206												1.612.092
	valeur																												
LEP	quant.	26.997		3.934		64.307	2.634	32.192		1.603	58.677				10.259				20.000		20.898	2.855				1.552	3.614	16.149	265.671
	valeur	45.280.503		7.313.896		108.405.736	4.416.978	54.136.992		2.691.902	98.830.845				17.208.799				33.746.831		35.027.053	4.799.438				2.619.279	6.136.614	27.421.129	448.035.996
BEURRE	quant.	3.234		527		9.894	1.153	14.272		9.336	15.414				1.838				11.541		1.901	5.079					4.516	78.704	
	valeur	7.121.141		1.271.176		21.760.897	2.355.675	31.394.262		20.448.174	33.829.644				4.033.952				25.522.917		4.170.495	11.097.818					10.013.897	173.020.048	
TOT L&B	quant.	30.230		4.461		74.201	3.787	46.464		10.939	74.091				12.097				31.541		22.798	7.934				1.552	3.614	20.665	344.375
	valeur																												
S. BLANC	quant.	1.111		2.138				1.392				30.191																	34.832
	valeur	324.848		720.950				404.975				10.167.960																	11.618.733
S. BRUT	quant.																												
	valeur																												
TOT. SUC	quant.	1.111		2.138				1.392				30.191																	34.832
	valeur																												
BOV.QUA	quant.																												
	valeur																												
BOV.DES	quant.																												
	valeur																												
EQ. CARC	quant.																												
TOT EQ	quant.																												
	valeur																												
EU TOTAL	valeur	52.726.492	310.798	31.530.399		144.877.604	7.419.391	85.936.229	2.580.825	47.422.094	146.986.833	31.410.985	332.865		29.182.310		65.892.619		59.269.748	711.698	47.615.991	19.427.631			14.905.497	26.205.927	13.570.772	37.435.027	865.751.735

PUBLIC INTERVENTION STOCKS

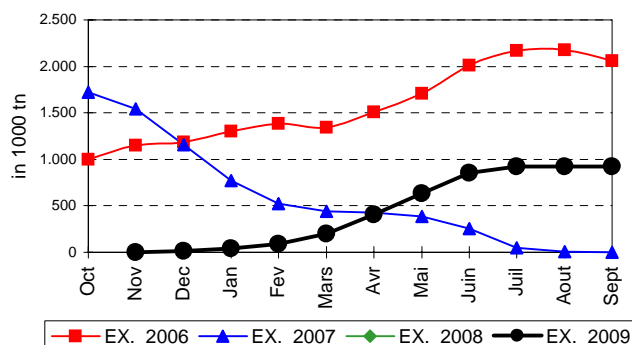


EVOLUTION IN QUANTITIES OF PUBLIC INTERVENTION STOCKS

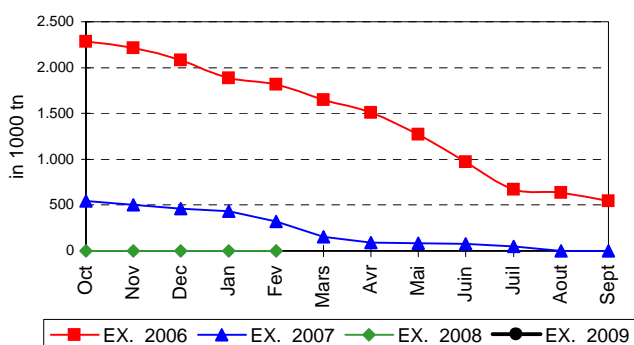
BLE TENDRE PANIFIABLE



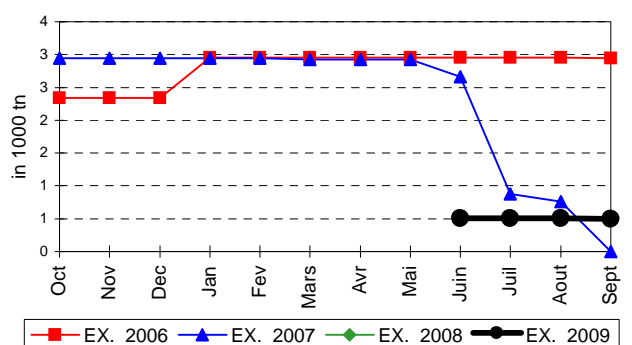
ORGE



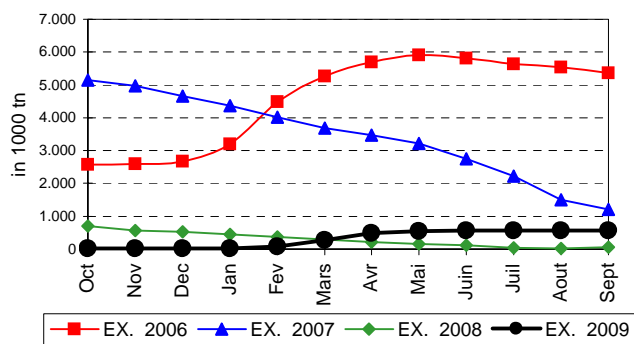
SEIGLE



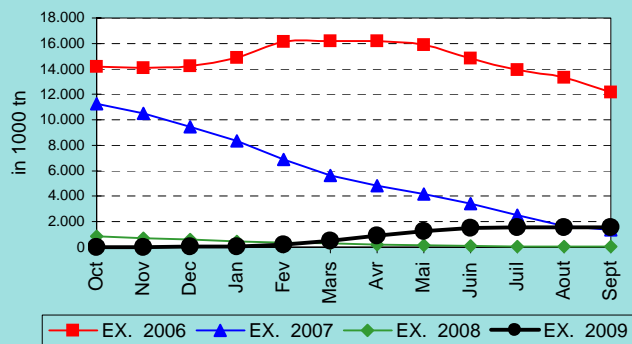
SORGHO



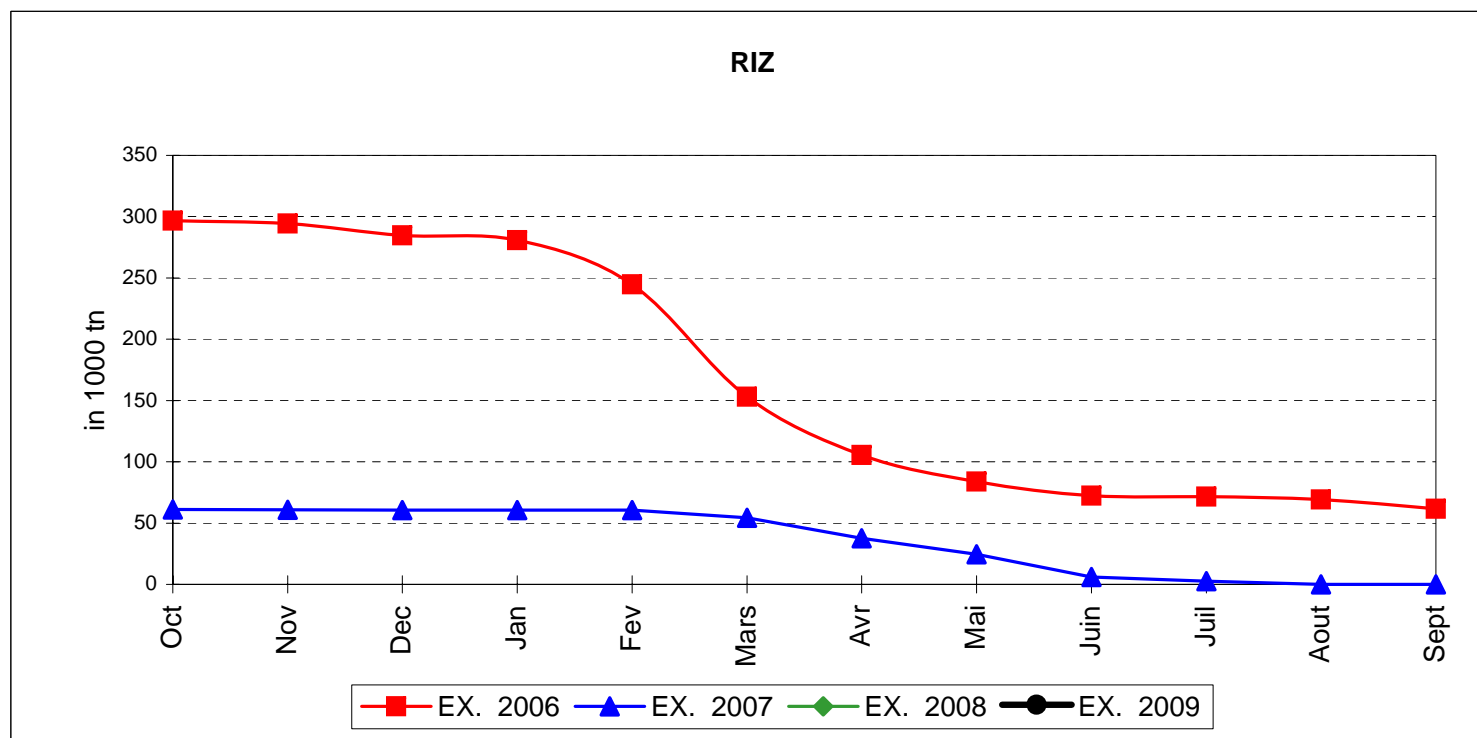
MAIS



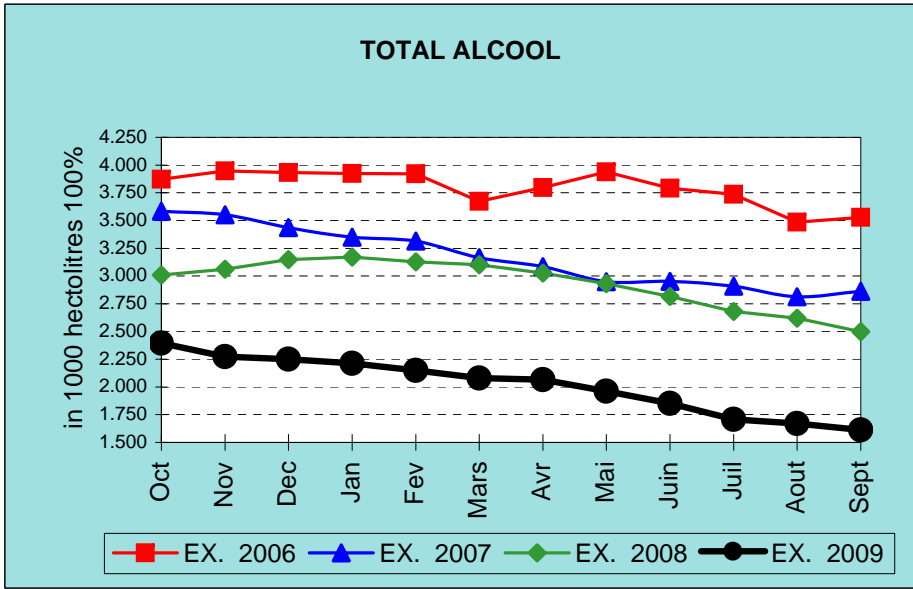
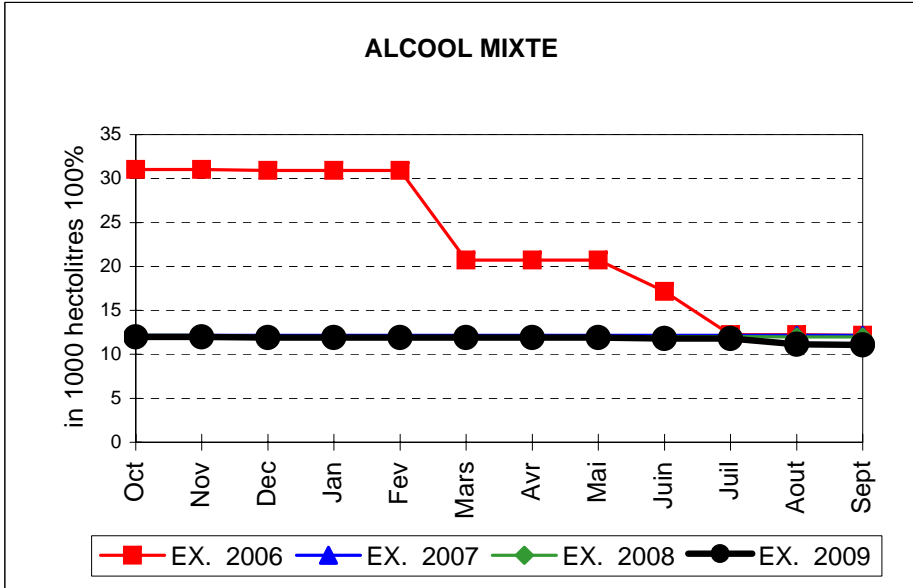
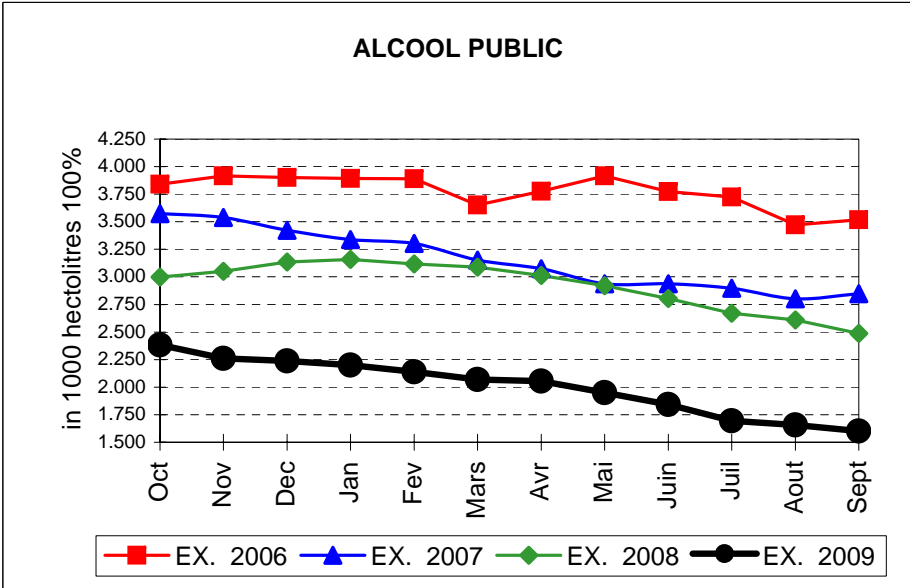
TOTAL CEREALES



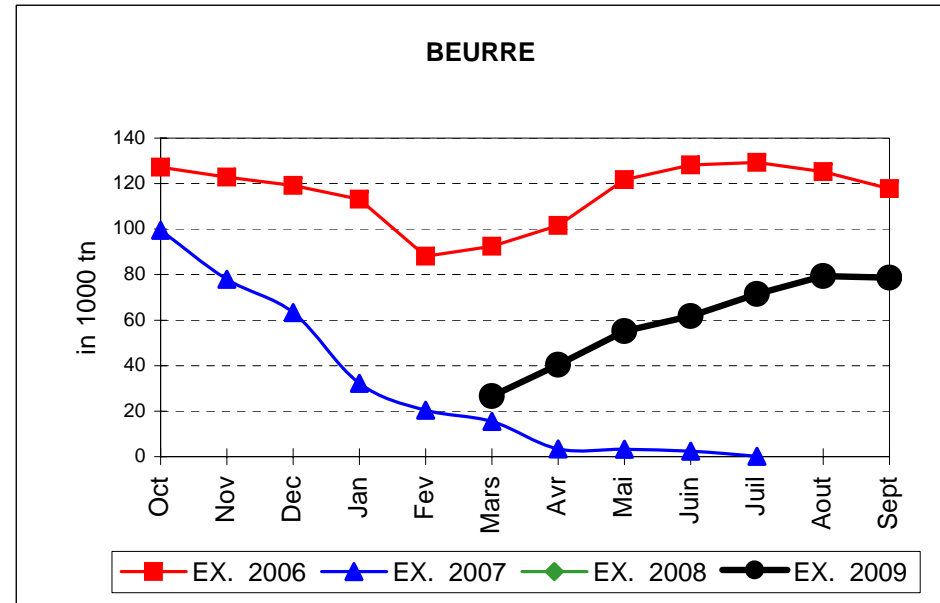
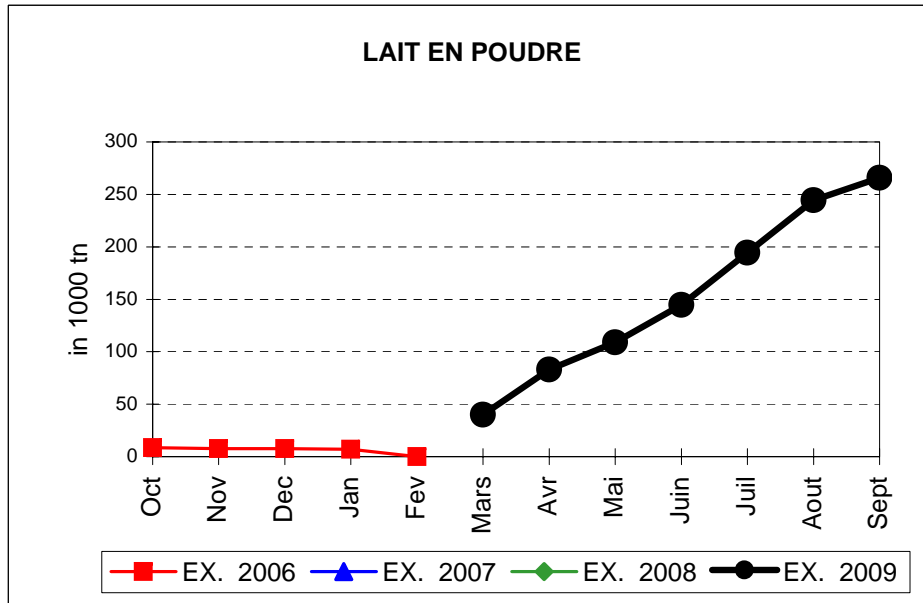
EVOLUTION IN QUANTITIES OF PUBLIC INTERVENTION STOCKS



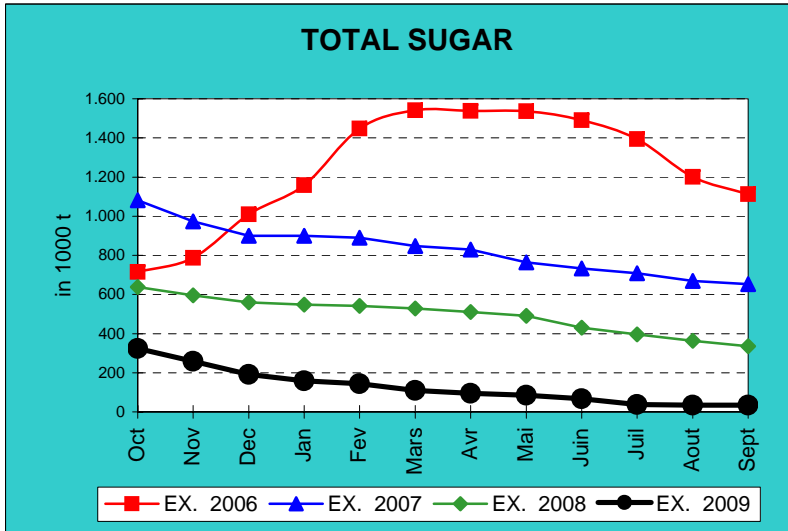
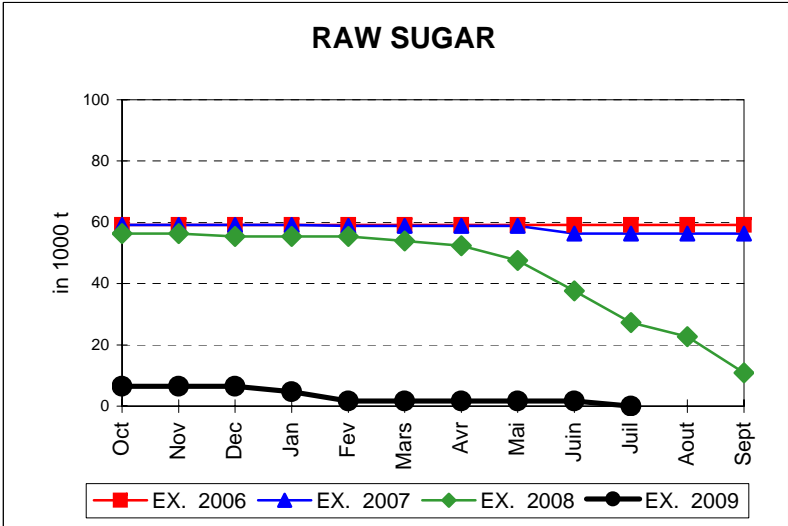
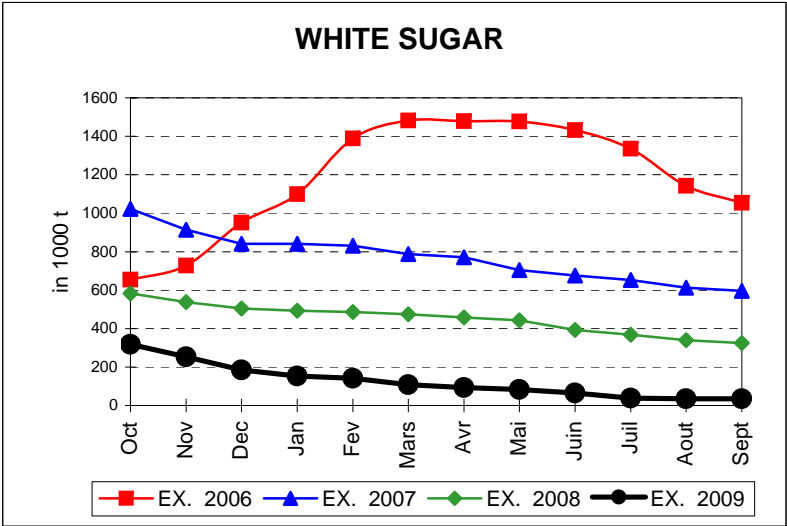
EVOLUTION IN QUANTITIES OF PUBLIC INTERVENTION STOCKS



EVOLUTION IN QUANTITIES OF PUBLIC INTERVENTION STOCKS

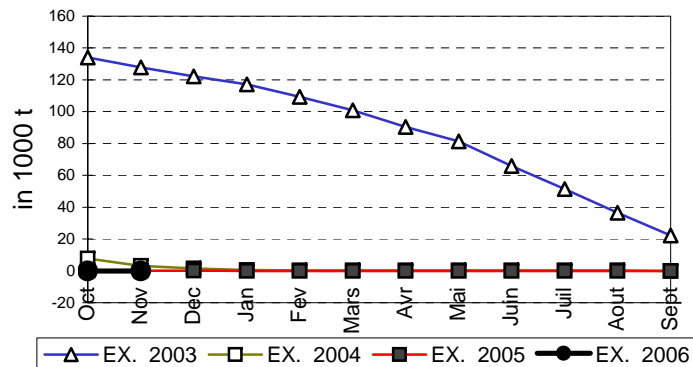


EVOLUTION IN QUANTITIES OF PUBLIC INTERVENTION STOCKS

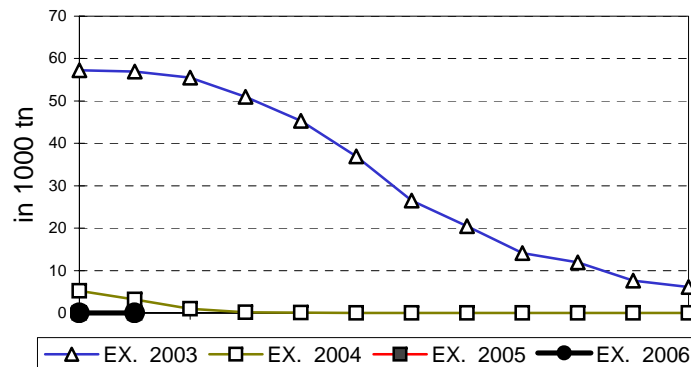


EVOLUTION IN QUANTITIES OF PUBLIC INTERVENTION STOCKS

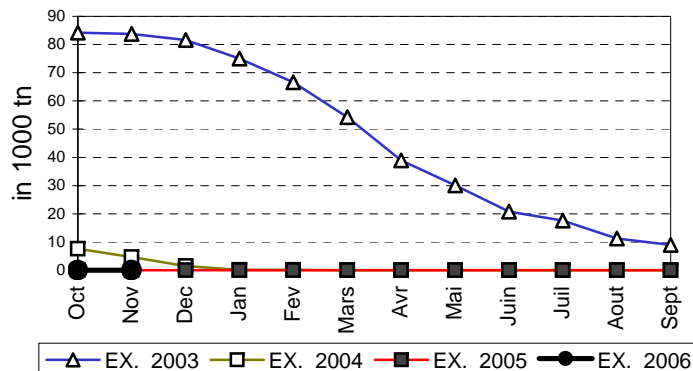
VIANDE BOVINE CARCASSES



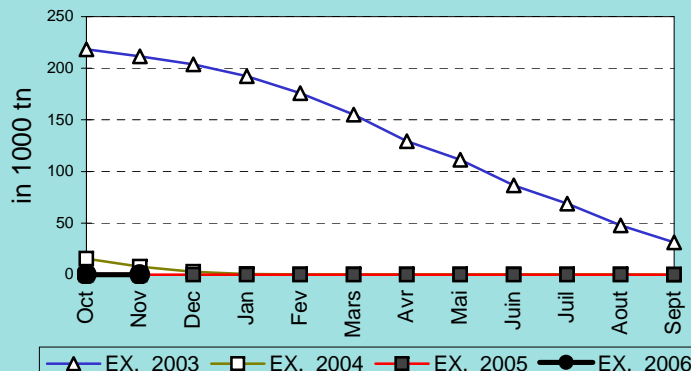
VIANDE BOVINE DESOSSEE



VIANDE DESOSSEE EN EQUIVALENT CARCASSES



TOTAL VIANDE EN EQUIVALENT CARCASSES



COMPARED WITH PREVIOUS MONTH

BEFORE COMPLEMENTARY DEPRECIATION

EU TOTAL	30-sep-09		31-ago-09		CHANGE IN QTY		CHANGE IN VALUE	
	QUANTITY (tn or hl)	VALUE (in Euro)	QUANTITY (tn or hl)	VALUE (in Euro)	ABSOLUTE (tn or hl)	%	ABSOLUTE (in Euro)	%
CLICK TOTALS FOR GRAPHICS	(a)	(b)	(c)	(d)	(e)=(a)-(c)	(f)=(e)/(c)*%	(g)=(b)-(d)	(h)=(g)/(d)*%
Blé panifiable	76.703	8.379.248	76.728	8.381.830	-25	0%	-2.583	0%
Orge	925.343	98.648.781	925.477	98.654.003	-135	0%	-5.222	0%
Seigle								
Sorgho	502	51.349	502	51.417	-1	0%	-69	0%
Mais	556.118	57.359.719	558.196	57.573.850	-2.078	0%	-214.131	0%
TOTAL CEREALES	1.558.665	164.439.096	1.560.903	164.661.101	-2.238	0%	-222.005	0%
TOTAL RIZ								
Alcool Public	1.601.004	68.456.981	1.657.707	70.890.220	-56.703	-3%	-2.433.239	-3%
Alcool Mixte	11.088	180.880	11.145	181.567	-57	-1%	-687	0%
TOTAL ALCOOL (HL 100%)	1.612.092	68.637.861	1.668.852	71.071.787	-56.760	-3%	-2.433.926	-3%
LEP	265.671	448.035.996	244.314	412.252.353	21.356	9%	35.783.643	9%
Beurre	78.704	173.020.048	79.404	174.705.656	-699	-1%	-1.685.608	-1%
TOTAL LAIT ET BEURRE	344.375	621.056.044	323.718	586.958.009	20.657	6%	34.098.035	6%
Sucre blanc	34.832	11.618.733	34.832	11.618.733				
Sucre brut								
TOTAL SUCRE	34.832	11.618.733	34.832	11.618.733				
Bov. carc.								
Bov. des.								
Eq. carc.								
TOTAL EQ. CARCASSES								
GRAND TOTAL		865.751.735		834.309.631			31.442.104	4%

SOURCE : The declarations of the Member States before controls.

COMPARED WITH PREVIOUS YEAR

BEFORE COMPLEMENTARY DEPRECIATION

EU TOTAL	30-sep-09		30-sep-08		CHANGE IN QTY		CHANGE IN VALUE	
	QUANTITY (tn or hl)	VALUE (in Euro)	QUANTITY (tn or hl)	VALUE (In Euro)	ABSOLUTE (tn or hl)	%	ABSOLUTE (in Euro)	%
CLICK TOTALS FOR GRAPHICS	(a)	(b)	(c)	(d)	(e)=(a)-(c)	(f)=(e)/(c)*%	(g)=(b)-(d)	(h)=(g)/(d)*%
Blé panifiable	76.703	8.379.248	37	3.302	76.666	208843%	8.375.946	253658%
Orge	925.343	98.648.781			925.343		98.648.781	
Seigle								
Sorgho	502	51.349			502		51.349	
Mais	556.118	57.359.719	49.717	4.881.707	506.401	1019%	52.478.012	1075%
TOTAL CEREALES	1.558.665	164.439.096	49.754	4.885.009	1.508.911	3033%	159.554.087	3266%
TOTAL RIZ								
Alcool Public	1.601.004	68.456.981	2.487.208	121.700.765	-886.204	-36%	-53.243.784	-44%
Alcool Mixte	11.088	180.880	11.966	185.790	-878	-7%	-4.910	-3%
TOTAL ALCOOL (HL 100%)	1.612.092	68.637.861	2.499.173	121.886.555	-887.082	-35%	-53.248.695	-44%
LEP	265.671	448.035.996			265.671		448.035.996	
Beurre	78.704	173.020.048			78.704		173.020.048	
TOTAL LAIT ET BEURRE	344.375	621.056.044			344.375		621.056.044	
Sucre blanc	34.832	11.618.733	325.256	118.164.527	-290.425	-89%	-106.545.793	-90%
Sucre brut			10.902	2.635.883	-10.902	-100%	-2.635.883	-100%
TOTAL SUCRE	34.832	11.618.733	336.158	120.800.410	-301.327	-90%	-109.181.677	-90%
Bov. carc.								
Bov. des.								
Eq. carc.								
TOTAL EQ. CARCASSES								
GRAND TOTAL		865.751.735		247.571.975			618.179.760	250%

SOURCE :

The declarations of the Member States before controls.

THE PUBLIC STORAGE FLASH REPORT AS AT						30-sep-09			
ESPAÑA									
PRODUCTS	YEAR-TO-DATE		OPENING BALANCE		CHANGE IN QTY		CHANGE IN VALUE		
	QUANTITY (in tonnes or hl)	VALUE (in Euro)	QUANTITY (in tonnes or hl)	VALUE (in Euro)	ABSOLUTE (in tonnes or hl)	%	ABSOLUTE (in Euro)	%	
	(a)	(b)	(c)	(d)	(e)=(a)-(c)	(f)=(e)/(c)*%	(g)=(b)-(d)	(h)=(g)/(d)*%	
Ble panifiable									
Orge									
Seigle									
Sorgho									
Mais									
TOTAL CEREALES									
RIZ									
Alcool Public	574.043	24.282.018	820.230	34.532.971	-246.187	-30%	-10.250.953	-30%	
Alcool Mixte									
TOT. ALCOOL (HL)	574.043	24.282.018	820.230	34.532.971	-246.187	-30%	-10.250.953	-30%	
LEP	1.603	2.691.902			1.603		2.691.902		
Beurre	9.336	20.448.174			9.336		20.448.174		
TOTAL L & B	10.939	23.140.076			10.939		23.140.076		
Sucre Blanc									
Sucre Brut									
TOTAL SUCRE									
Bov. carc.									
Bov. des.									
Eq. carc.									
TOTAL EQ. CARC.									
GRAND TOTAL		47.422.094		34.532.971			12.889.123	37%	

30-sep-09

