

BEFORE COMPLEMENTARY DEPRECIATION

CHOOSE COUNTRY

EU TOTAL	YEAR-TO-DATE		OPENING BALANCE (1)		CHANGE IN QTY		CHANGE IN VALUE	
	QUANTITY (tn or hl)	VALUE (in Euro)	QUANTITY (tn or hl)	VALUE (in Euro)	ABSOLUTE (tn or hl)	%	ABSOLUTE (in Euro)	%
CLICK TOTALS FOR GRAPHICS	(a)	(b)	(c)	(d)	(e)=(a)-(c)	(f)=(e)/(c)*%	(g)=(b)-(d)	(h)=(g)/(d)*%
Blé panifiable	234.577	24.151.808	76.703	7.911.093	157.874	206%	16.240.715	205%
Orge	5.326.165	540.452.273	925.385	94.445.665	4.400.780	476%	446.006.608	472%
Seigle								
Sorgho			502	50.812	-502	-100%	-50.812	-100%
Mais	3.142	318.234	556.111	56.510.040	-552.969	-99%	-56.191.806	-99%
TOTAL CEREALES	5.563.883	564.922.315	1.558.701	158.917.609	4.005.183	257%	406.004.706	255%
TOTAL RIZ								
Alcool Public	628.737	23.343.472	1.600.049	59.312.261	-971.312	-61%	-35.968.789	-61%
Alcool Mixte	1.173	4.645	11.067	180.503	-9.894	-89%	-175.858	-97%
TOTAL ALCOOL (HL 100%)	629.910	23.348.117	1.611.116	59.492.764	-981.206	-61%	-36.144.647	-61%
LEP	197.223	294.162.025	268.527	400.661.815	-71.303	-27%	-106.499.790	-27%
Beurre	1.545	3.343.770	78.688	171.396.018	-77.143	-98%	-168.052.247	-98%
TOTAL LAIT ET BEURRE	198.769	297.505.795	347.215	572.057.832	-148.446	-43%	-274.552.037	-48%
Sucre Blanc	9	3.052	34.080	10.975.054	-34.071	-100%	-10.972.002	-100%
Sucre Brut								
TOTAL SUCRE	9	3.052	34.080	10.975.054	-34.071	-100%	-10.972.002	-100%
Bov. carc.								
Bov. des.								
Eq. carc.								
TOTAL EQ. CARCASSES								
GRAND TOTAL		885.779.279		801.443.260			84.336.020	11%

SOURCE : The declarations of the Member States before controls.

(1) Period 13/2009 annual declaration

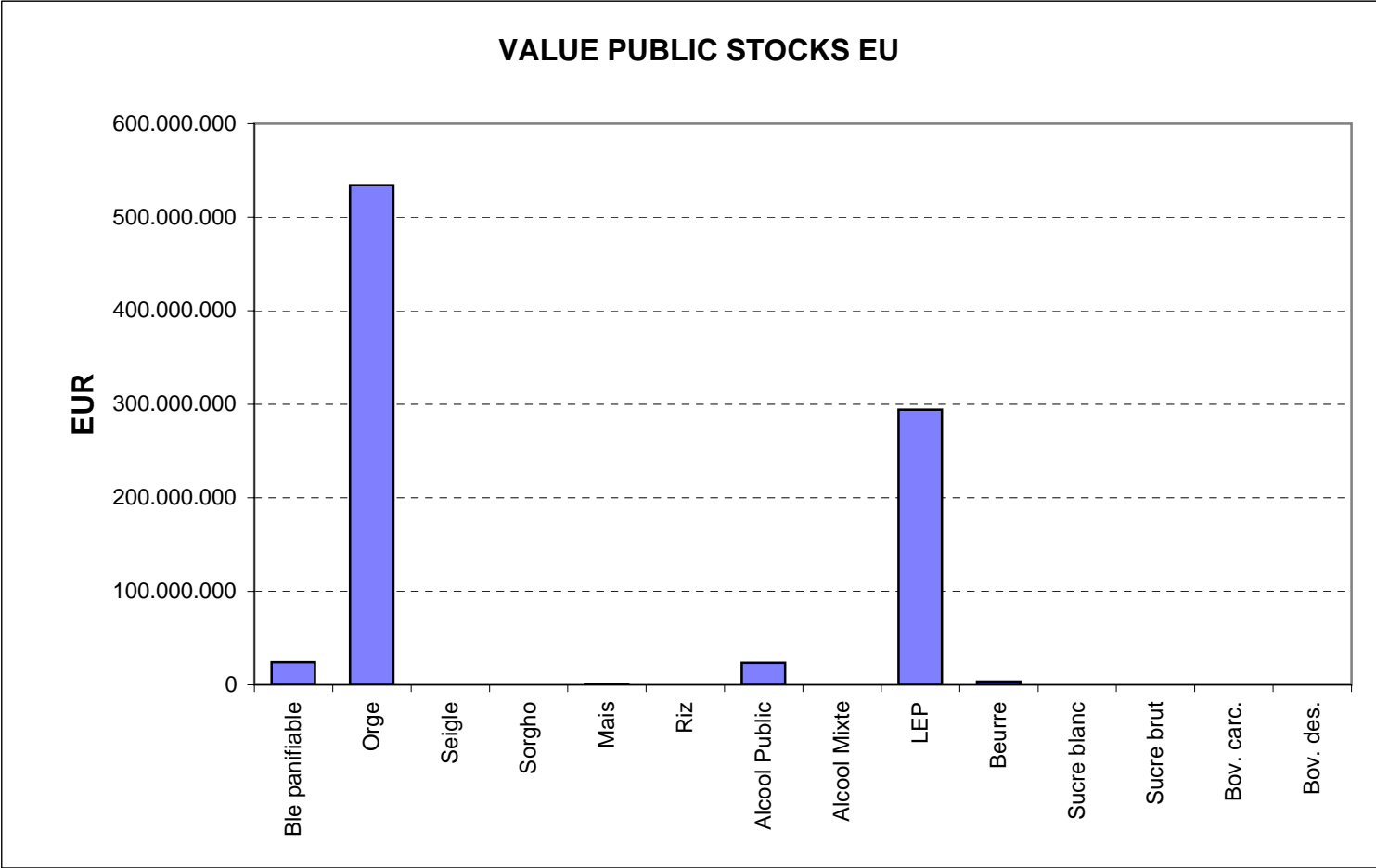
quantities are expressed in
tonnes (alcohol in hl 100%)

ACCOUNTING VALUE OF THE PUBLIC INTERVENTION STOCKS AS AT :
(BEFORE THE COMPLEMENTARY DEPRECIATION) 30-sep-10

AGRI I.4
J. FLORET tel. 53236

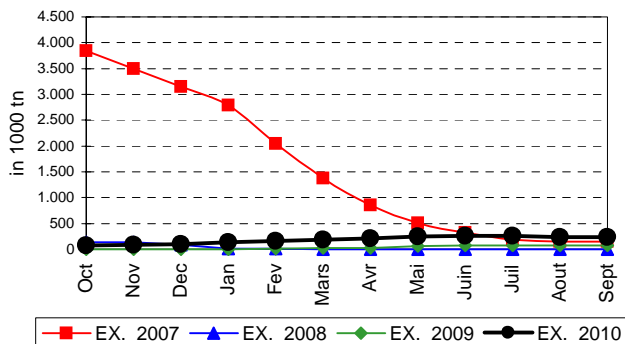
Produits		BE	BG	CZ	DK	DE	EE	IE	EL	ES	FR	IT	CY	LV	LT	LU	HU	MT	NL	OS	PL	PO	RO	SI	SK	FIN	SE	UK	TOTAL	
BLE PANIF	quant.		3.587	61.338											91	119.001					619				27.059	22.882			234.577	
	valeur		363.424	6.435.614											8.867	12.189.274						62.615				2.747.318	2.344.696			24.151.808
ORGE	quant.	34.950	42.101	282.466	59.583	1.683.607	74.798				928.910			22.993	152.286		299.366			40.689	365.269		61.433		155.684	822.636	148.257	151.136	5.326.165	
	valeur	3.548.459	4.348.146	29.786.035	6.069.142	169.202.498	7.583.752				94.544.491			2.317.023	15.341.257		30.535.334			4.131.163	36.830.113		6.273.544		15.847.100	84.040.516	15.085.191	14.968.508	540.452.273	
SEIGLE	quant.																													
SEIGLE	valeur																													
SORGHO	quant.																													
SORGHO	valeur																													
MAIS	quant.																3.142													3.142
	valeur																318.234													318.234
TOT.CER	quant.	34.950	45.687	343.804	59.583	1.683.607	74.798				928.910			22.993	152.377		421.509			40.689	365.888		61.433		182.743	845.518	148.257	151.136	5.563.883	
RIZ	quant.																													
RIZ	valeur																													
ALC.P.	quant.								60.182	373.725	60.760		7.219				54.846					72.006								628.737
	valeur								2.226.117	13.910.040	2.248.723		266.516				2.029.305					2.662.769								23.343.472
ALC.M.	quant.										1.173																			1.173
	valeur										4.645																			4.645
TOT.ALC.	quant.								60.182	373.725	61.933		7.219				54.846					72.006								629.910
LEP	quant.	24.122		3.166		63.763	1.665	32.170			23.929								19.260		2.597	607				1.052	3.614	16.646	197.223	
	valeur	35.721.212		4.987.629		94.872.856	2.382.081	48.058.217			35.852.754								28.792.320		3.850.494	909.158				1.575.738	5.411.965	24.805.683	294.162.025	
BEURRE	quant.						182				1					1.363														1.545
	valeur						371.083				2.233					2.970.454														3.343.770
TOT L&B	quant.	24.122		3.166		63.763	1.847	32.170			23.930					5.994			19.260		2.597	607				1.052	3.614	16.646	198.769	
S. BLANC	quant.			9																										9
	valeur			3.052																										3.052
S. BRUT	quant.																													
S. BRUT	valeur																													
TOT. SUC	quant.			9																										9
BOV.QUA	quant.																													
	valeur																													
BOV.DES	quant.																													
	valeur																													
EQ. CARC	quant.																													
TOT EQ	quant.																													
EU TOTAL	valeur	39.269.671	4.711.570	41.212.330	6.069.142	264.075.354	10.336.916	48.058.217	2.226.117	13.910.040	132.652.847		266.516	2.317.023	25.262.496	45.072.148		28.792.320	4.131.163	40.743.222	3.571.928	6.273.544		18.594.418	87.960.950	20.497.156	39.774.191	885.779.279		

PUBLIC INTERVENTION STOCKS

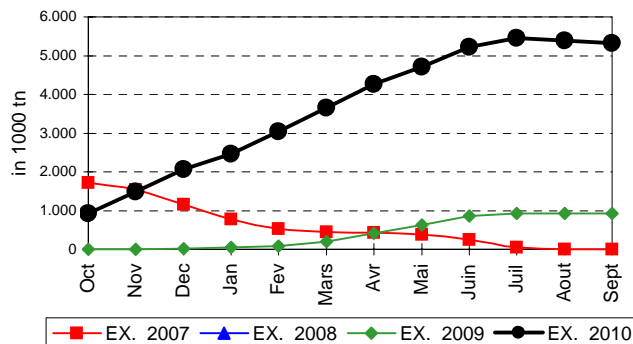


EVOLUTION IN QUANTITIES OF PUBLIC INTERVENTION STOCKS

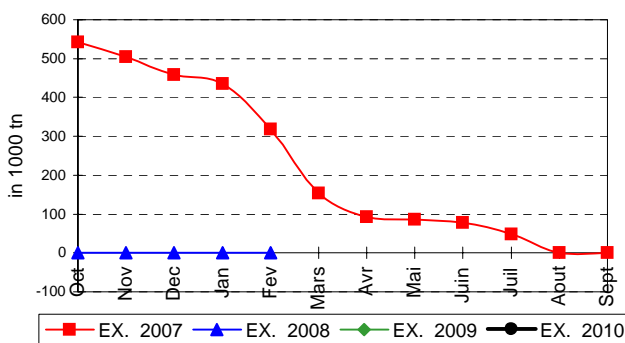
BLE TENDRE PANIFIABLE



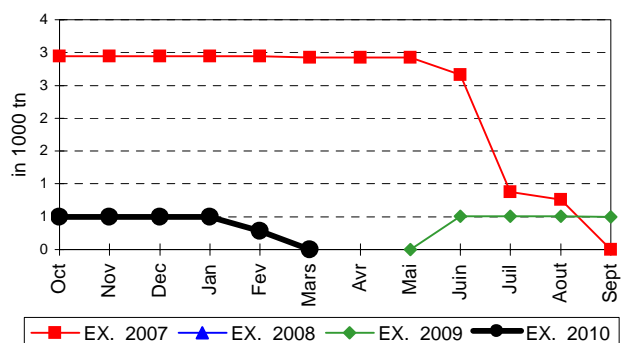
ORGE



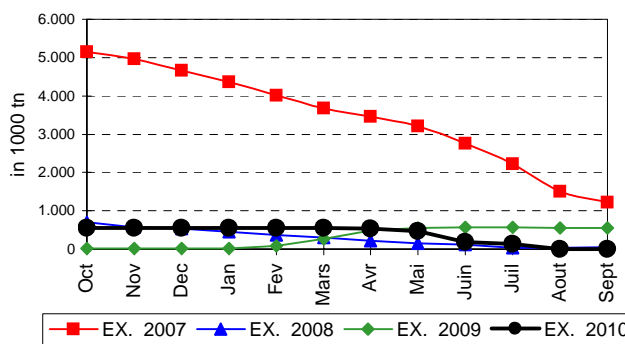
SEIGLE



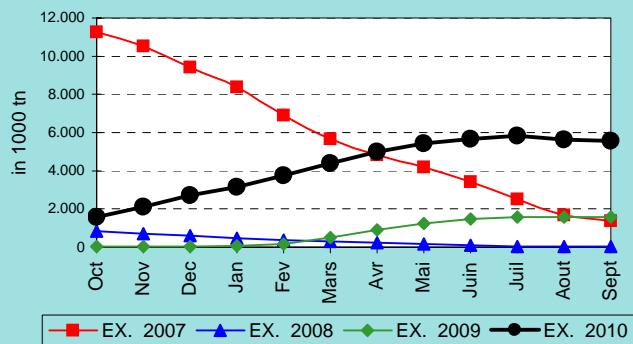
SORGHO



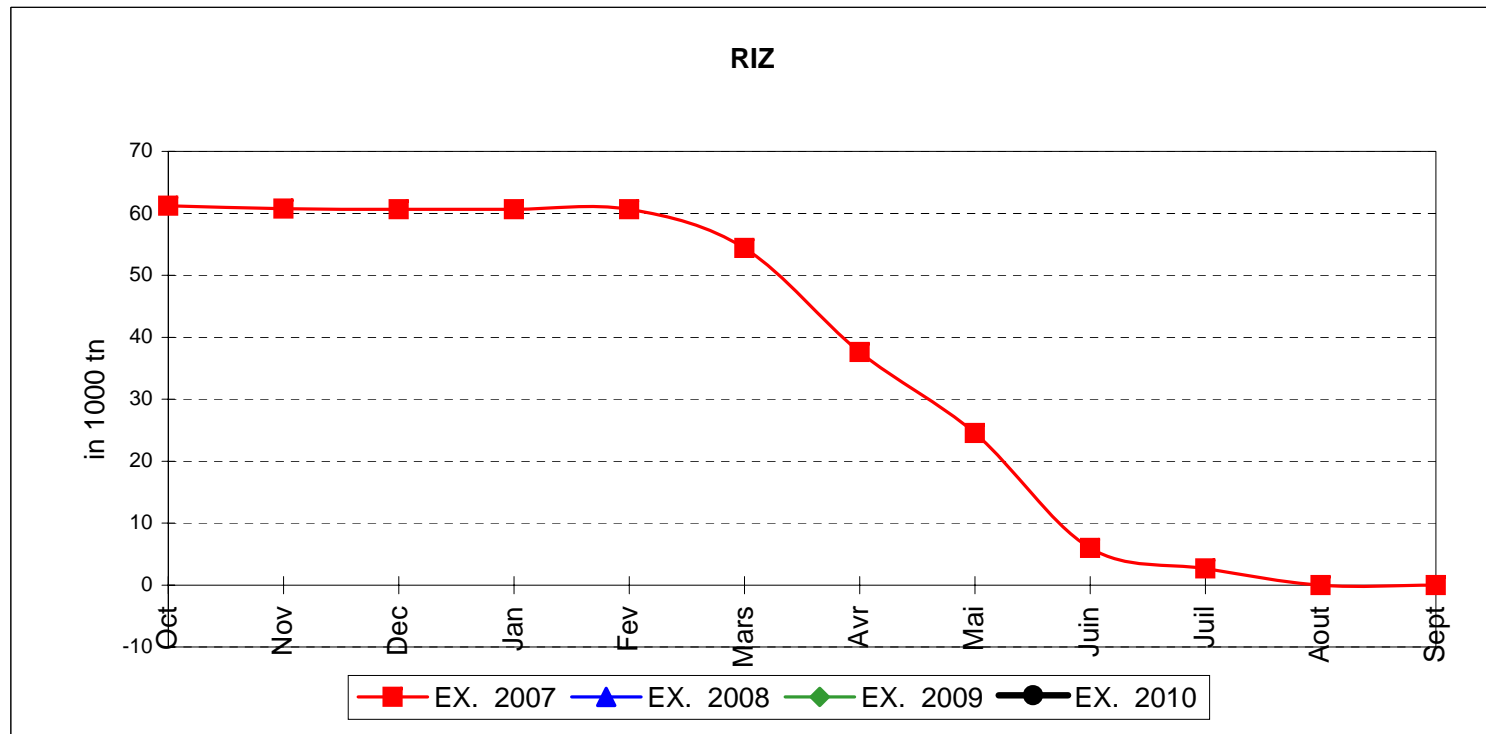
MAIS



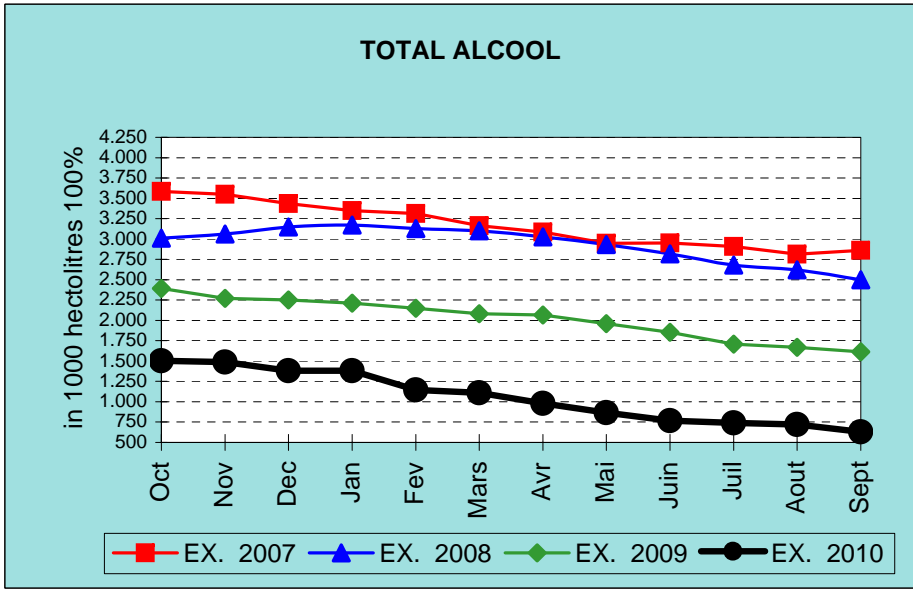
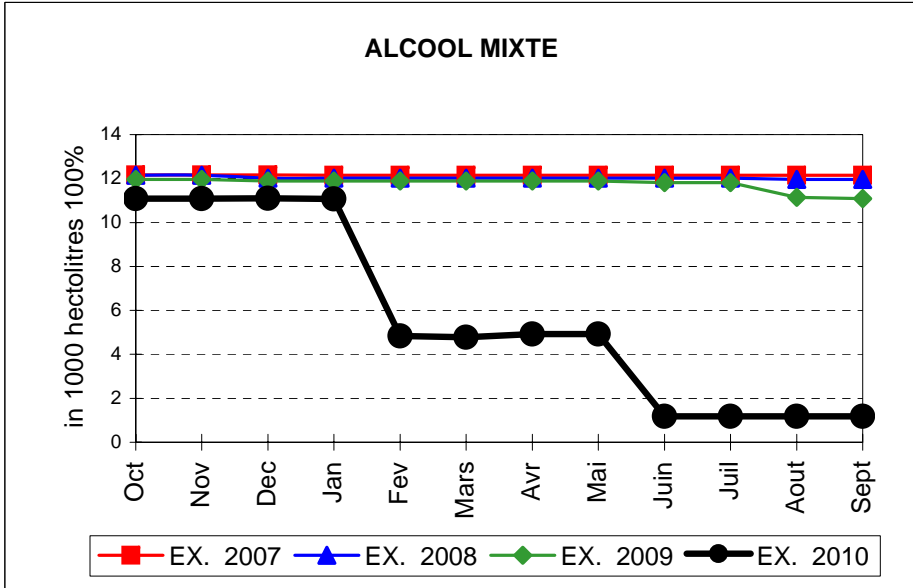
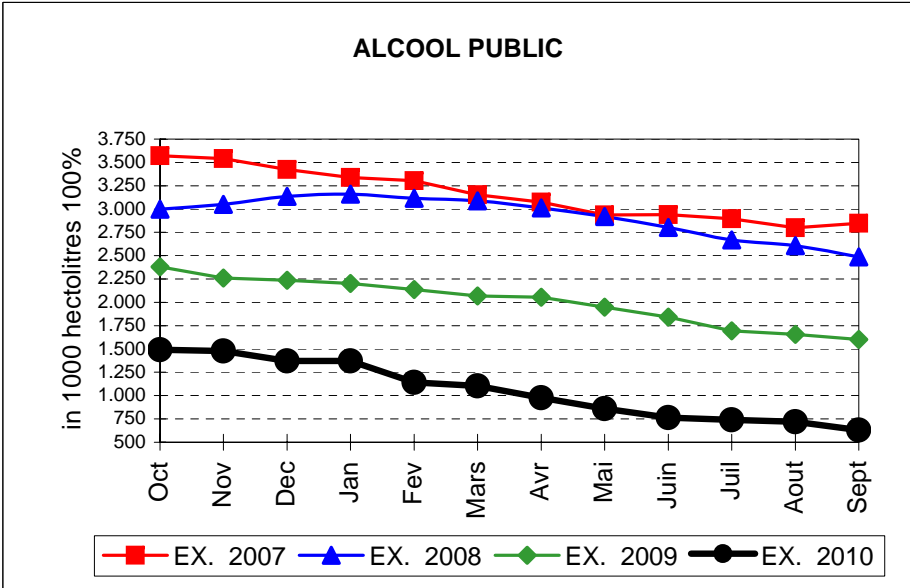
TOTAL CEREALES



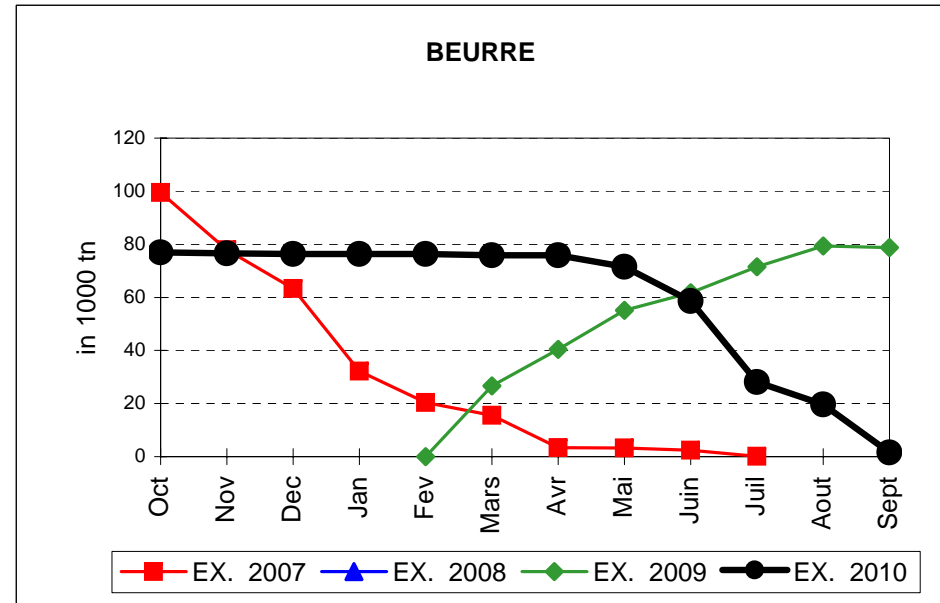
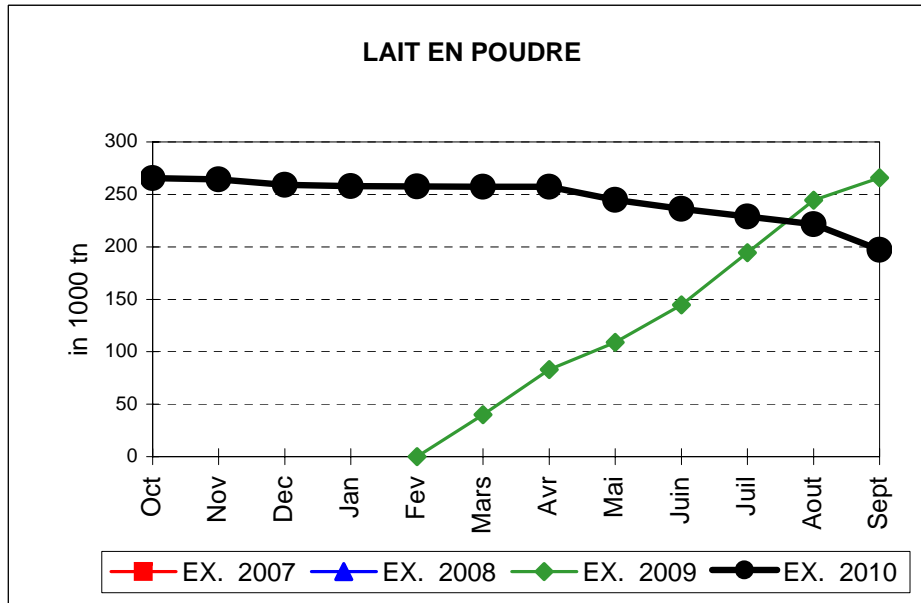
EVOLUTION IN QUANTITIES OF PUBLIC INTERVENTION STOCKS



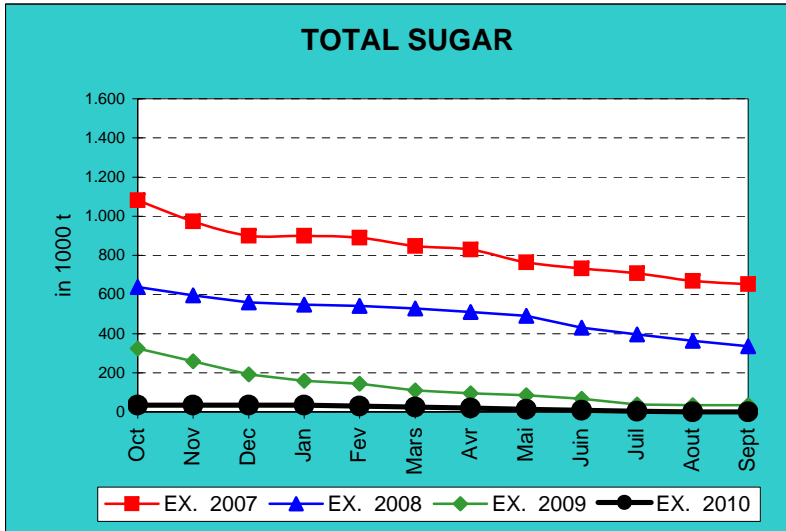
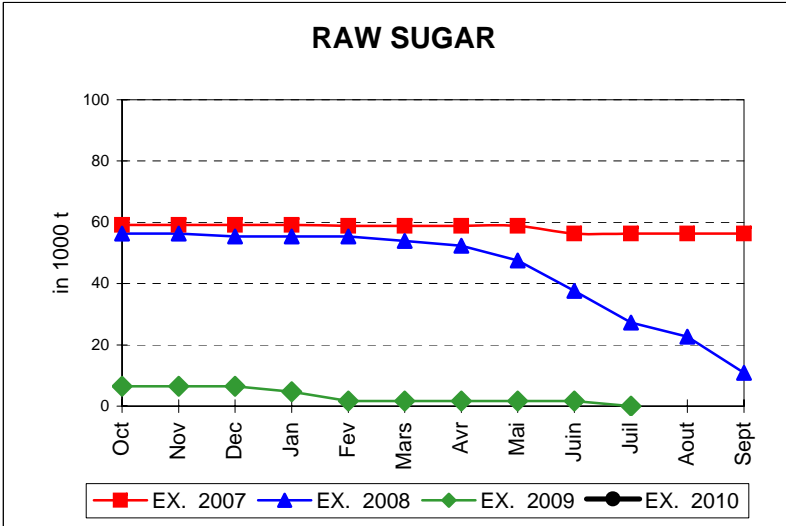
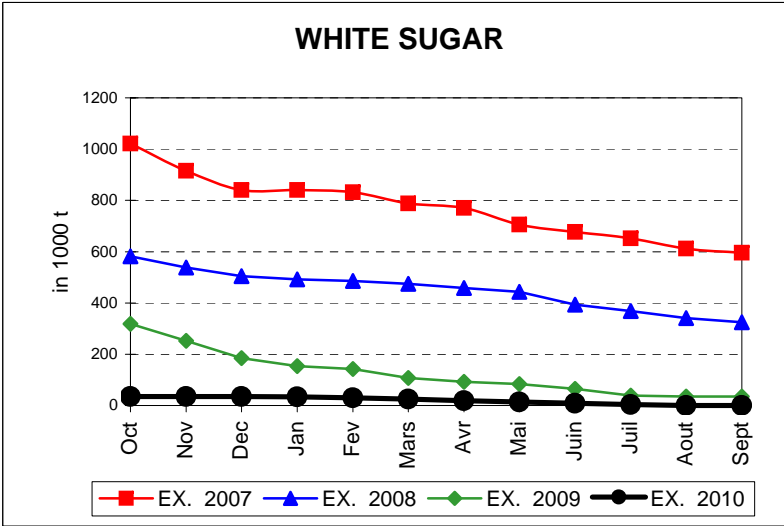
EVOLUTION IN QUANTITIES OF PUBLIC INTERVENTION STOCKS



EVOLUTION IN QUANTITIES OF PUBLIC INTERVENTION STOCKS

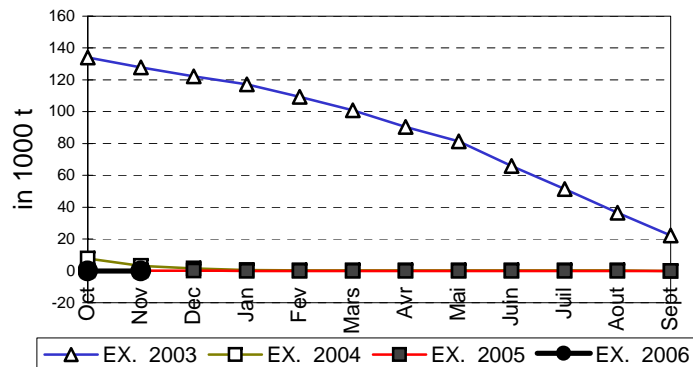


EVOLUTION IN QUANTITIES OF PUBLIC INTERVENTION STOCKS

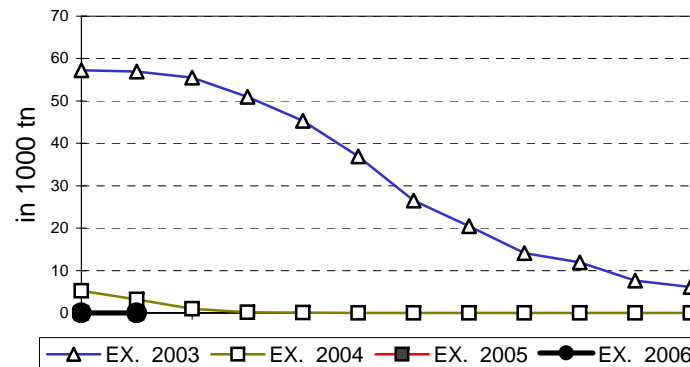


EVOLUTION IN QUANTITIES OF PUBLIC INTERVENTION STOCKS

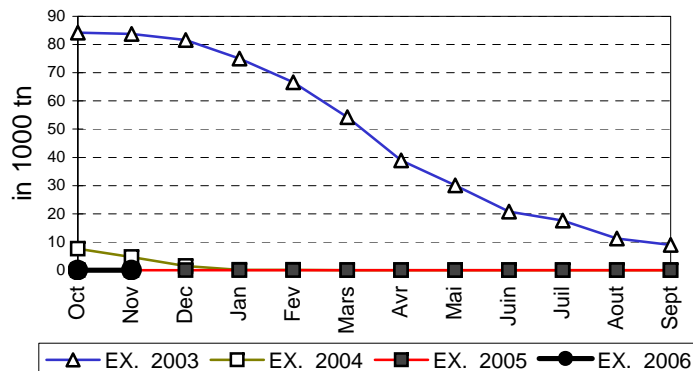
VIANDE BOVINE CARCASSES



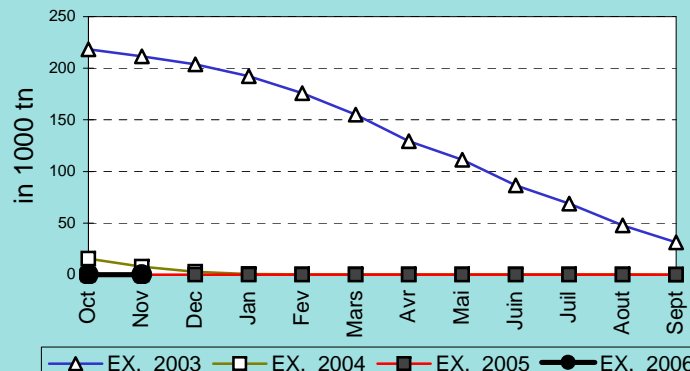
VIANDE BOVINE DESOSSEE



VIANDE DESOSSEE EN EQUIVALENT CARCASSES



TOTAL VIANDE EN EQUIVALENT CARCASSES



COMPARED WITH PREVIOUS MONTH

EU TOTAL	30-sep-10		31-ago-10		CHANGE IN QTY		CHANGE IN VALUE	
	QUANTITY (tn or hl)	VALUE (in Euro)	QUANTITY (tn or hl)	VALUE (in Euro)	ABSOLUTE (tn or hl)	%	ABSOLUTE (in Euro)	%
CLICK TOTALS FOR GRAPHICS	(a)	(b)	(c)	(d)	(e)=(a)-(c)	(f)=(e)/(c)*%	(g)=(b)-(d)	(h)=(g)/(d)*%
Blé panifiable	234.577	24.151.808	234.804	24.174.626	-227	0%	-22.819	0%
Orge	5.326.165	540.452.273	5.392.053	547.128.815	-65.888	-1%	-6.676.542	-1%
Seigle								
Sorgho								
Mais	3.142	318.234	3.825	387.478	-684	-18%	-69.244	-18%
TOTAL CEREALES	5.563.883	564.922.315	5.630.682	571.690.919	-66.799	-1%	-6.768.604	-1%
TOTAL RIZ								
Alcool Public	628.737	23.343.472	720.271	26.734.734	-91.534	-13%	-3.391.262	-13%
Alcool Mixte	1.173	4.645	1.179	4.676	-5	0%	-30	-1%
TOTAL ALCOOL (HL 100%)	629.910	23.348.117	721.450	26.739.409	-91.540	-13%	-3.391.292	-13%
LEP	197.223	294.162.025	221.573	330.674.415	-24.350	-11%	-36.512.390	-11%
Beurre	1.545	3.343.770	19.614	42.721.641	-18.069	-92%	-39.377.871	-92%
TOTAL LAIT ET BEURRE	198.769	297.505.795	241.187	373.396.056	-42.419	-18%	-75.890.261	-20%
Sucre blanc	9	3.052	9	3.052				
Sucre brut								
TOTAL SUCRE	9	3.052	9	3.052				
Bov. carc.								
Bov. des.								
Eq. carc.								
TOTAL EQ. CARCASSES								
GRAND TOTAL		885.779.279		971.829.437			-86.050.157	-9%

SOURCE : The declarations of the Member States before controls.

COMPARED WITH PREVIOUS YEAR

EU TOTAL	30-sep-10		30-sep-09		CHANGE IN QTY		CHANGE IN VALUE	
	QUANTITY (tn or hl)	VALUE (in Euro)	QUANTITY (tn or hl)	VALUE (In Euro)	ABSOLUTE (tn or hl)	%	ABSOLUTE (in Euro)	%
CLICK TOTALS FOR GRAPHICS	(a)	(b)	(c)	(d)	(e)=(a)-(c)	(f)=(e)/(c)*%	(g)=(b)-(d)	(h)=(g)/(d)*%
Blé panifiable	234.577	24.151.808	76.703	8.379.248	157.874	206%	15.772.560	188%
Orge	5.326.165	540.452.273	925.343	98.648.781	4.400.822	476%	441.803.492	448%
Seigle								
Sorgho			502	51.349	-502	-100%	-51.349	-100%
Mais	3.142	318.234	556.118	57.359.719	-552.976	-99%	-57.041.485	-99%
TOTAL CEREALES	5.563.883	564.922.315	1.558.665	164.439.096	4.005.218	257%	400.483.219	244%
TOTAL RIZ								
Alcool Public	628.737	23.343.472	1.601.004	68.456.981	-972.267	-61%	-45.113.509	-66%
Alcool Mixte	1.173	4.645	11.088	180.880	-9.915	-89%	-176.235	-97%
TOTAL ALCOOL (HL 100%)	629.910	23.348.117	1.612.092	68.637.861	-982.182	-61%	-45.289.744	-66%
LEP	197.223	294.162.025	265.671	448.035.996	-68.448	-26%	-153.873.971	-34%
Beurre	1.545	3.343.770	78.704	173.020.048	-77.159	-98%	-169.676.278	-98%
TOTAL LAIT ET BEURRE	198.769	297.505.795	344.375	621.056.044	-145.606	-42%	-323.550.249	-52%
Sucre blanc	9	3.052	34.832	11.618.733	-34.823	-100%	-11.615.681	-100%
Sucre brut								
TOTAL SUCRE	9	3.052	34.832	11.618.733	-34.823	-100%	-11.615.681	-100%
Bov. carc.								
Bov. des.								
Eq. carc.								
TOTAL EQ. CARCASSES								
GRAND TOTAL		885.779.279		865.751.735			20.027.545	2%

SOURCE :

The declarations of the Member States before controls.

THE PUBLIC STORAGE FLASH REPORT AS AT									
30-sep-10									
ESPAÑA									
PRODUCTS	YEAR-TO-DATE		OPENING BALANCE		CHANGE IN QTY		CHANGE IN VALUE		
	QUANTITY (in tonnes or hl)	VALUE (in Euro)	QUANTITY (in tonnes or hl)	VALUE (in Euro)	ABSOLUTE (in tonnes or hl)	%	ABSOLUTE (in Euro)	%	
	(a)	(b)	(c)	(d)	(e)=(a)-(c)	(f)=(e)/(c)*%	(g)=(b)-(d)	(h)=(g)/(d)*%	
Ble panifiable									
Orge									
Seigle									
Sorgho									
Mais									
TOTAL CEREALES									
RIZ									
Alcool Public	373.725	13.910.040	574.043	21.365.391	-200.318	-35%	-7.455.351	-35%	
Alcool Mixte									
TOT. ALCOOL (HL)	373.725	13.910.040	574.043	21.365.391	-200.318	-35%	-7.455.351	-35%	
LEP			1.603	2.442.752	-1.603	-100%	-2.442.752	-100%	
Beurre			9.335	20.336.778	-9.335	-100%	-20.336.778	-100%	
TOTAL L & B			10.938	22.779.530	-10.938	-100%	-22.779.530	-100%	
Sucre Blanc									
Sucre Brut									
TOTAL SUCRE									
Bov. carc.									
Bov. des.									
Eq. carc.									
TOTAL EQ. CARC.									
GRAND TOTAL		13.910.040		44.144.921			-30.234.880	-68%	

30-sep-10

