

## AFTER COMPLEMENTARY DEPRECIATION

CHOOSE COUNTRY

EU TOTAL	YEAR-TO-DATE		OPENING BALANCE (1)		CHANGE IN QTY		CHANGE IN VALUE	
	QUANTITY (tn or hl)	VALUE (in Euro)	QUANTITY (tn or hl)	VALUE (in Euro)	ABSOLUTE (tn or hl)	%	ABSOLUTE (in Euro)	%
CLICK TOTALS FOR GRAPHICS	(a)	(b)	(c)	(d)	(e)=(a)-(c)	(f)=(e)/(c)*%	(g)=(b)-(d)	(h)=(g)/(d)*%
<b>Blé panifiable</b>			234.577	23.710.769	-234.577	-100%	-23.710.769	-100%
<b>Orge</b>	165.326	16.717.611	5.326.162	540.451.972	-5.160.836	-97%	-523.734.361	-97%
<b>Seigle</b>								
<b>Sorgho</b>								
<b>Mais</b>			3.142	318.234	-3.142	-100%	-318.234	-100%
<b>TOTAL CEREALES</b>	<b>165.326</b>	<b>16.717.611</b>	<b>5.563.880</b>	<b>564.480.975</b>	<b>-5.398.554</b>	<b>-97%</b>	<b>-547.763.363</b>	<b>-97%</b>
<b>TOTAL RIZ</b>								
<b>Alcool Public</b>	55.204	1.544.567	628.630	21.369.957	-573.426	-91%	-19.825.390	-93%
<b>Alcool Mixte</b>			1.173	4.645	-1.173	-100%	-4.645	-100%
<b>TOTAL ALCOOL (HL 100%)</b>	<b>55.204</b>	<b>1.544.567</b>	<b>629.803</b>	<b>21.374.602</b>	<b>-574.599</b>	<b>-91%</b>	<b>-19.830.035</b>	<b>-93%</b>
<b>LEP</b>	65.663	97.846.309	197.223	294.161.988	-131.560	-67%	-196.315.678	-67%
<b>Beurre</b>	796	1.735.728	1.545	3.343.770	-749	-48%	-1.608.042	-48%
<b>TOTAL LAIT ET BEURRE</b>	<b>66.460</b>	<b>99.582.038</b>	<b>198.769</b>	<b>297.505.758</b>	<b>-132.309</b>	<b>-67%</b>	<b>-197.923.720</b>	<b>-67%</b>
<b>Sucre Blanc</b>			9	3.052	-9	-100%	-3.052	-100%
<b>Sucre Brut</b>								
<b>TOTAL SUCRE</b>			<b>9</b>	<b>3.052</b>	<b>-9</b>	<b>-100%</b>	<b>-3.052</b>	<b>-100%</b>
<b>Bov. carc.</b>								
<b>Bov. des.</b>								
<b>Eq. carc.</b>								
<b>TOTAL EQ. CARCASSES</b>								
<b>GRAND TOTAL</b>		<b>117.844.217</b>		<b>883.364.387</b>			<b>-765.520.170</b>	<b>-87%</b>

SOURCE : The declarations of the Member States before controls.

(1) Period 13/2010 annual declaration

quantities are expressed in  
tonnes (alcohol in hl 100%)

ACCOUNTING VALUE OF THE PUBLIC INTERVENTION STOCKS AS AT :  
(BEFORE THE COMPLEMENTARY DEPRECIATION)

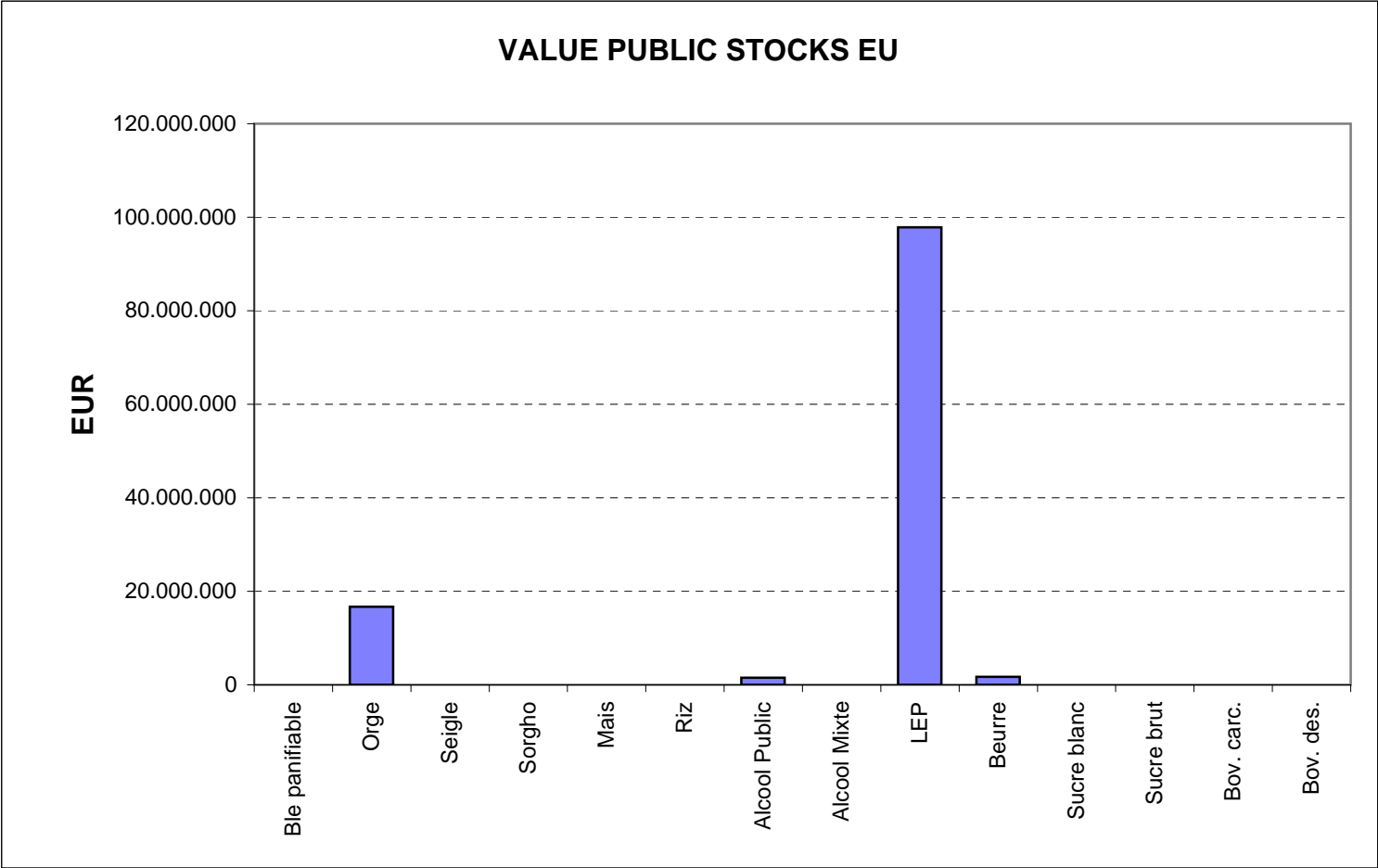
30-sep-11

AGRI I.4

J. FLORET tel. 53236

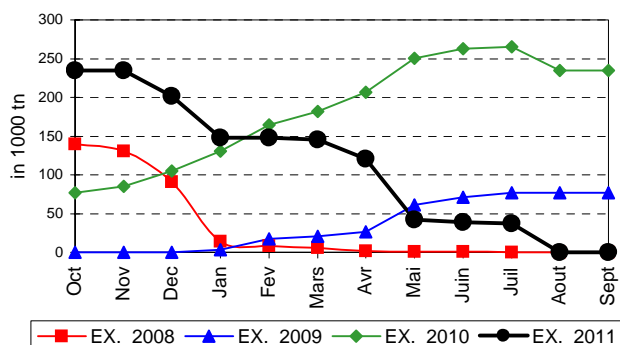
Produits		BE	BG	CZ	DK	DE	EE	IE	EL	ES	FR	IT	CY	LV	LT	LU	HU	MT	NL	OS	PL	PO	RO	SI	SK	FIN	SE	UK	TOTAL	
BLE PANIF	quant.																													
	valeur																													
ORGE	quant.					16.856					397															75.350	64.820	7.904	165.326	
	valeur					1.694.032					40.181																7.633.692	6.566.932	782.775	16.717.611
SEIGLE	quant.																													
SEIGLE	valeur																													
SORGHO	quant.																													
SORGHO	valeur																													
MAIS	quant.																													
MAIS	valeur																													
TOT.CER	quant.					16.856					397															75.350	64.820	7.904	165.326	
TOT.CER	valeur																													
RIZ	quant.																													
RIZ	valeur																													
ALC.P.	quant.												7.112				48.092													
ALC.P.	valeur											198.943					1.345.624													
ALC.M.	quant.																													
ALC.M.	valeur																													
TOT.ALC.	quant.												7.112				48.092												55.204	
TOT.ALC.	valeur																												1.544.567	
LEP	quant.	9.466		330		18.084	635	8.513			6.740				3.578				3.527		1	0					191	14.599	65.663	
LEP	valeur	14.017.578		520.420		26.907.332	908.769	12.717.037			10.098.370				5.362.182				5.272.168		1.223	674					285.723	21.754.834	97.846.309	
BEURRE	quant.						1								796														796	
BEURRE	valeur						1.124								1.734.604														1.735.728	
TOT L&B	quant.	9.466		330		18.084	636	8.513			6.740				4.373				3.527		1	0					191	14.599	66.460	
TOT L&B	valeur																													
S. BLANC	quant.																													
S. BLANC	valeur																													
S. BRUT	quant.																													
S. BRUT	valeur																													
TOT. SUC	quant.																													
TOT. SUC	valeur																													
BOV.QUA	quant.																													
BOV.QUA	valeur																													
BOV.DES	quant.																													
BOV.DES	valeur																													
EQ. CARC	quant.																													
EQ. CARC	valeur																													
TOT EQ	quant.																													
TOT EQ	valeur																													
EU TOTAL	valeur	14.017.578		520.420		28.601.365	909.893	12.717.037			10.138.551		198.943		7.096.786		1.345.624		5.272.168		1.223	674					7.633.692	6.852.655	22.537.608	117.844.217

**PUBLIC INTERVENTION STOCKS**

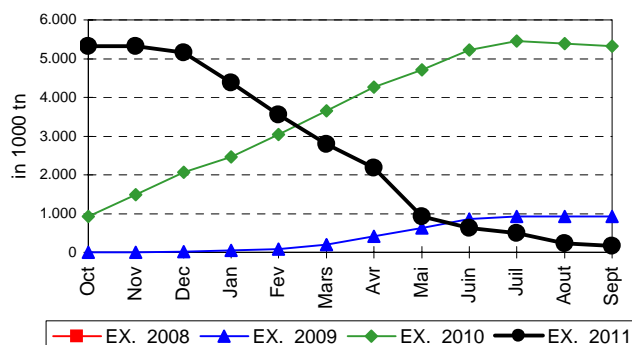


## EVOLUTION IN QUANTITIES OF PUBLIC INTERVENTION STOCKS

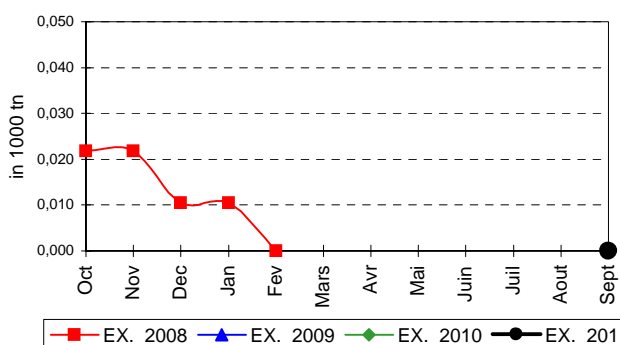
### BLE TENDRE PANIFIABLE



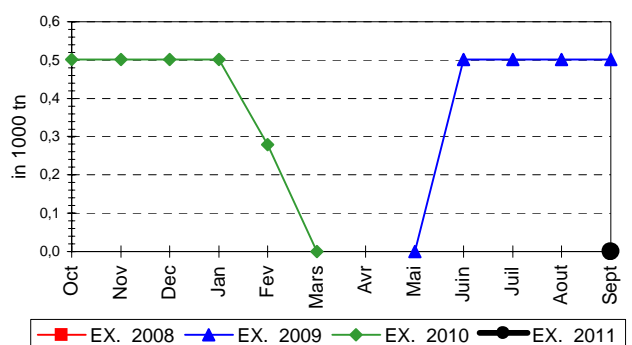
### ORGE



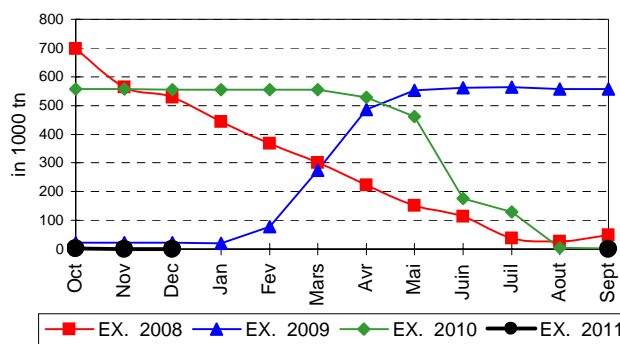
### SEIGLE



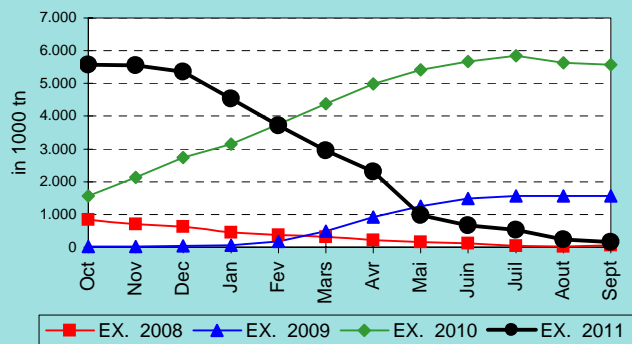
### SORGHO



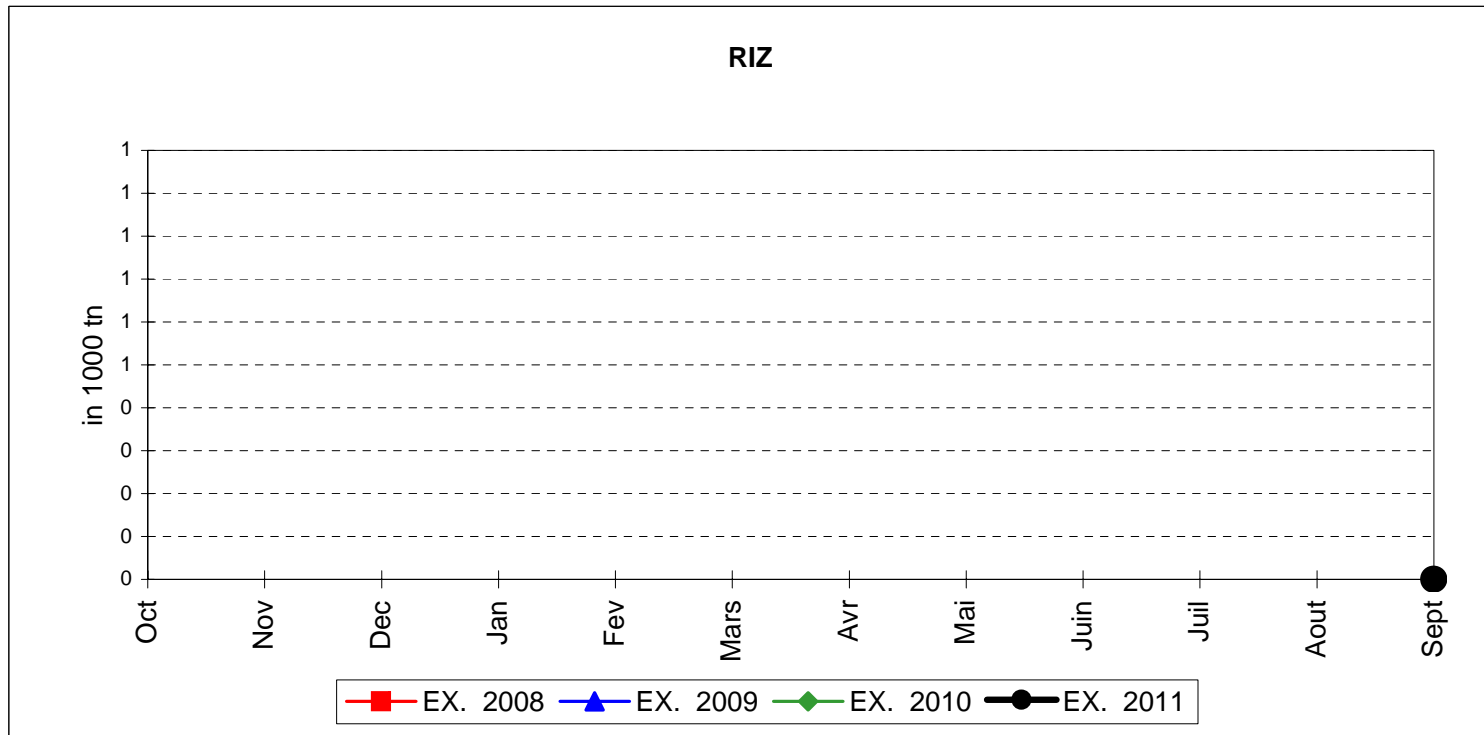
### MAIS



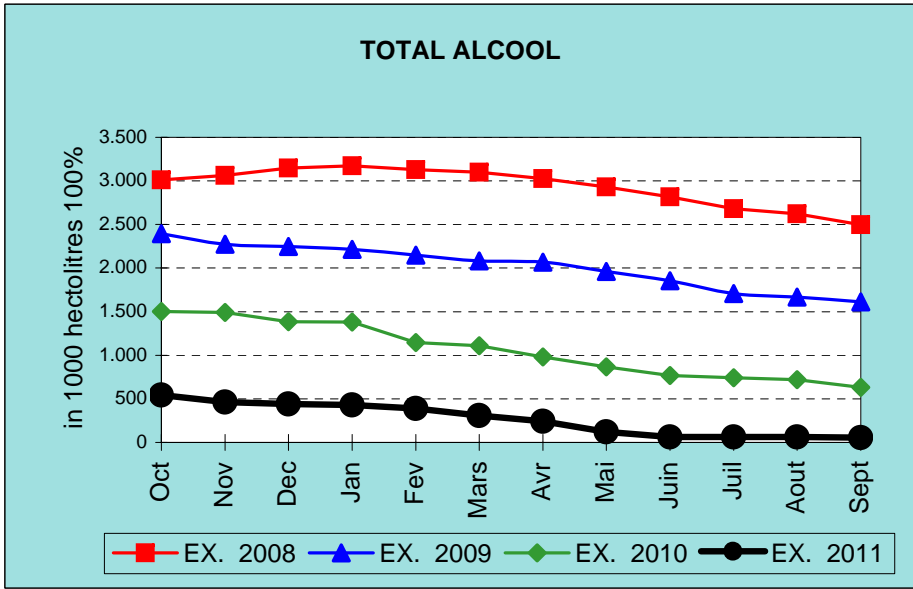
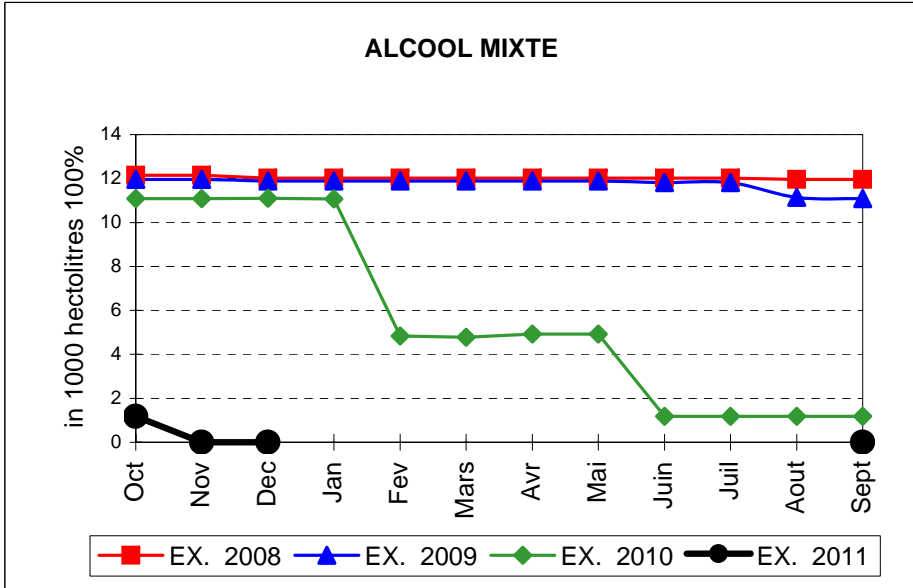
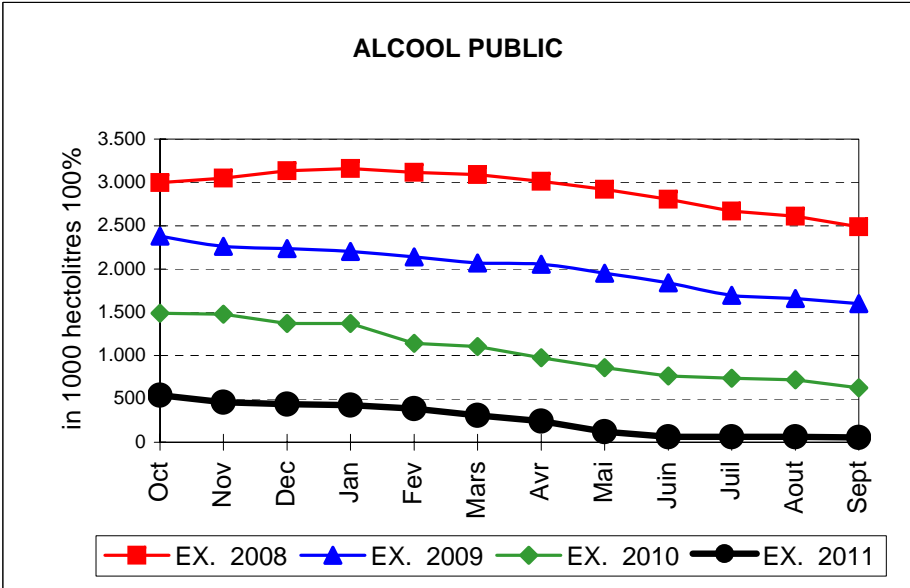
### TOTAL CEREALES



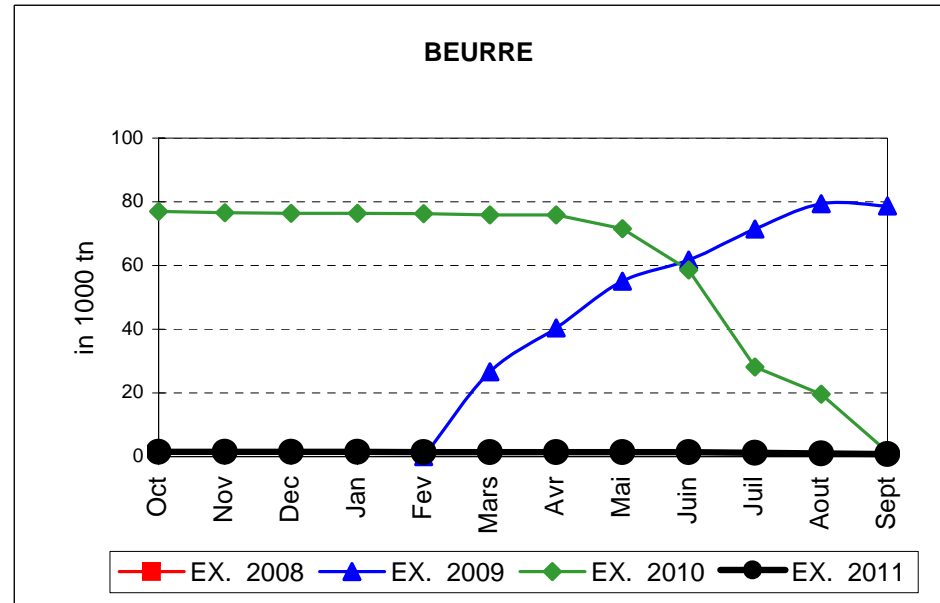
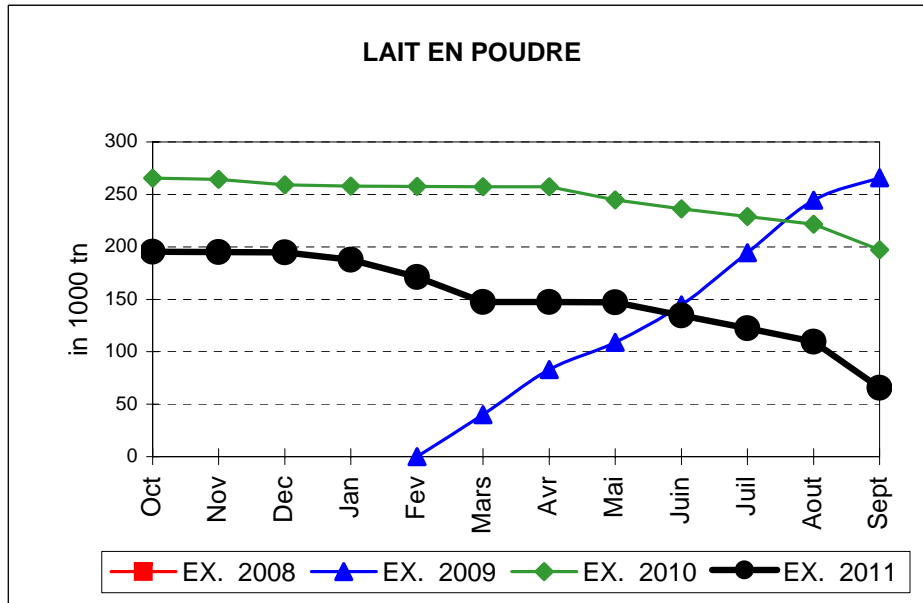
## EVOLUTION IN QUANTITIES OF PUBLIC INTERVENTION STOCKS



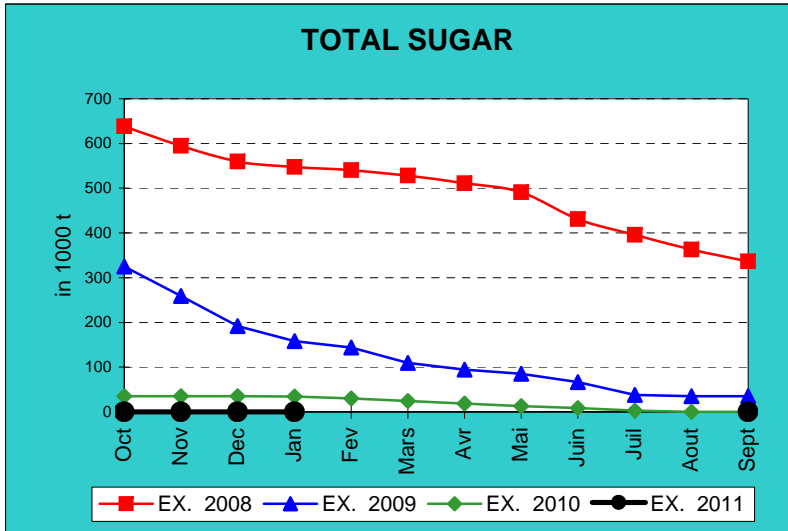
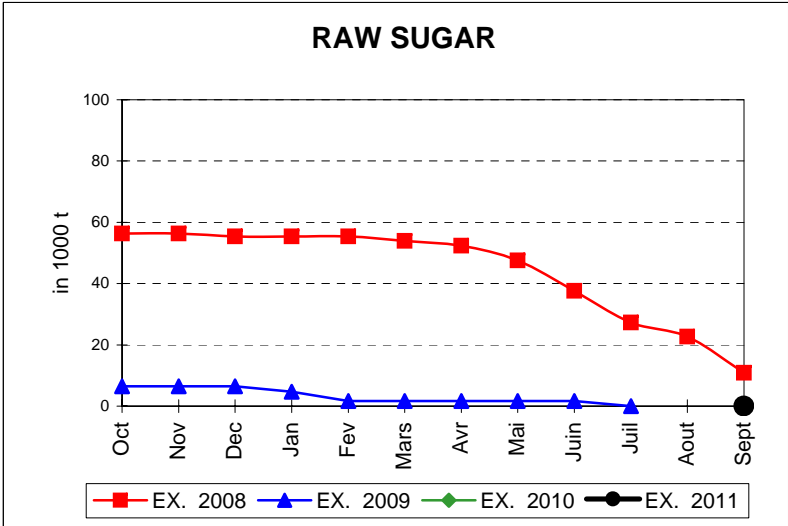
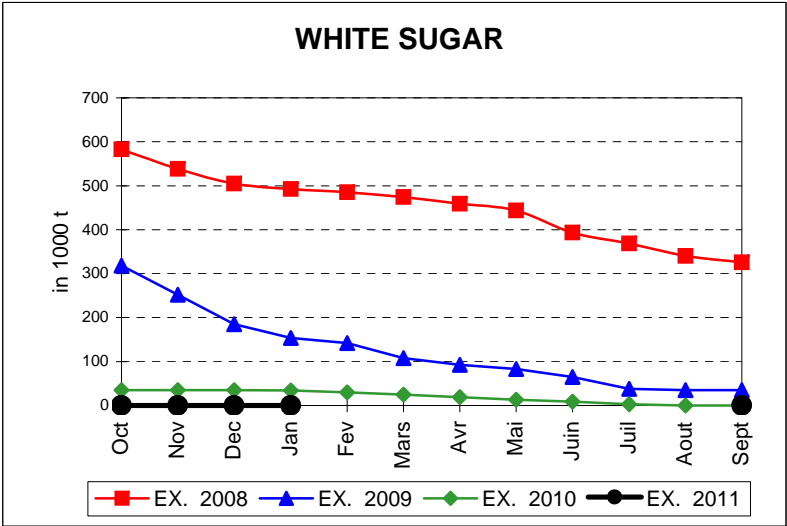
# EVOLUTION IN QUANTITIES OF PUBLIC INTERVENTION STOCKS



## EVOLUTION IN QUANTITIES OF PUBLIC INTERVENTION STOCKS



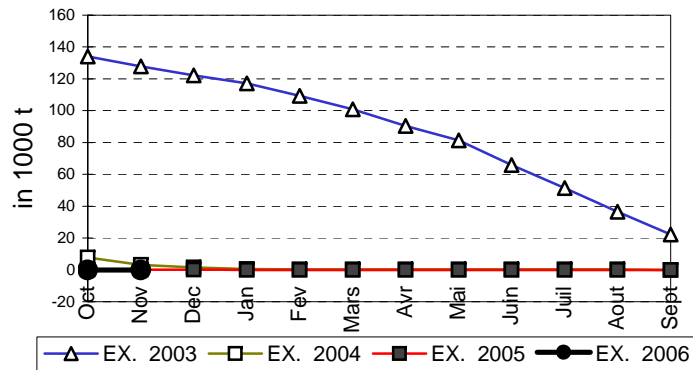
# EVOLUTION IN QUANTITIES OF PUBLIC INTERVENTION STOCKS



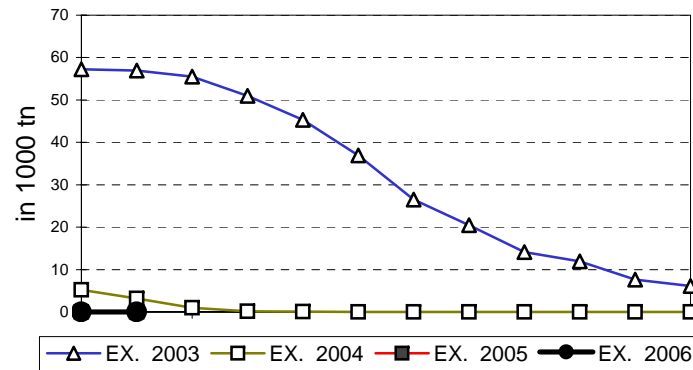


## EVOLUTION IN QUANTITIES OF PUBLIC INTERVENTION STOCKS

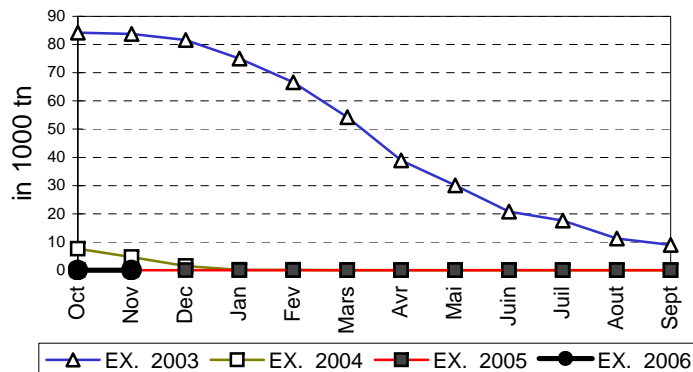
### VIANDE BOVINE CARCASSES



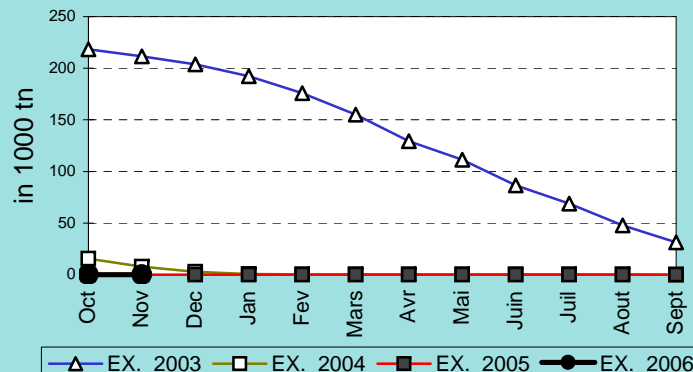
### VIANDE BOVINE DESOSSEE



### VIANDE DESOSSEE EN EQUIVALENT CARCASSES



### TOTAL VIANDE EN EQUIVALENT CARCASSES



THE PUBLIC STORAGE FLASH REPORT AS AT										30-sep-11
ESPAÑA										
PRODUCTS	YEAR-TO-DATE		OPENING BALANCE		CHANGE IN QTY		CHANGE IN VALUE			
	QUANTITY (in tonnes or hl)	VALUE (in Euro)	QUANTITY (in tonnes or hl)	VALUE (in Euro)	ABSOLUTE (in tonnes or hl)	%	ABSOLUTE (in Euro)	%		
	(a)	(b)	(c)	(d)	(e)=(a)-(c)	(f)=(e)/(c)*%	(g)=(b)-(d)	(h)=(g)/(d)*%		
Ble panifiable										
Orge										
Seigle										
Sorgho										
Mais										
<b>TOTAL CEREALES</b>										
<b>RIZ</b>										
Alcool Public			373.725	12.711.227	-373.725	-100%	-12.711.227	-100%		
Alcool Mixte										
<b>TOT. ALCOOL (HL)</b>			<b>373.725</b>	<b>12.711.227</b>	<b>-373.725</b>	<b>-100%</b>	<b>-12.711.227</b>	<b>-100%</b>		
LEP										
Beurre										
<b>TOTAL L &amp; B</b>										
Sucre Blanc										
Sucre Brut										
<b>TOTAL SUCRE</b>										
Bov. carc.										
Bov. des.										
Eq. carc.										
<b>TOTAL EQ. CARC.</b>										
<b>GRAND TOTAL</b>				<b>12.711.227</b>				<b>-12.711.227</b>	<b>-100%</b>	

30-sep-11

