

BEFORE COMPLEMENTARY DEPRECIATION

CHOOSE COUNTRY

EU TOTAL	YEAR-TO-DATE		OPENING BALANCE (1)		CHANGE IN QTY		CHANGE IN VALUE	
	QUANTITY (tn or hl)	VALUE (in Euro)	QUANTITY (tn or hl)	VALUE (in Euro)	ABSOLUTE (tn or hl)	%	ABSOLUTE (in Euro)	%
CLICK TOTALS FOR GRAPHICS	(a)	(b)	(c)	(d)	(e)=(a)-(c)	(f)=(e)/(c)*%	(g)=(b)-(d)	(h)=(g)/(d)*%
Blé panifiable			234.577	23.710.769	-234.577	-100%	-23.710.769	-100%
Orge	165.326	16.810.372	5.326.162	540.451.972	-5.160.836	-97%	-523.641.600	-97%
Seigle								
Sorgho								
Mais			3.142	318.234	-3.142	-100%	-318.234	-100%
TOTAL CEREALES	165.326	16.810.372	5.563.880	564.480.975	-5.398.554	-97%	-547.670.602	-97%
TOTAL RIZ								
Alcool Public	55.204	1.876.645	628.630	21.369.957	-573.426	-91%	-19.493.312	-91%
Alcool Mixte			1.173	4.645	-1.173	-100%	-4.645	-100%
TOTAL ALCOOL (HL 100%)	55.204	1.876.645	629.803	21.374.602	-574.599	-91%	-19.497.957	-91%
LEP	65.663	97.846.309	197.223	294.161.988	-131.560	-67%	-196.315.678	-67%
Beurre	796	1.735.728	1.545	3.343.770	-749	-48%	-1.608.042	-48%
TOTAL LAIT ET BEURRE	66.460	99.582.038	198.769	297.505.758	-132.309	-67%	-197.923.720	-67%
Sucre Blanc			9	3.052	-9	-100%	-3.052	-100%
Sucre Brut								
TOTAL SUCRE			9	3.052	-9	-100%	-3.052	-100%
Bov. carc.								
Bov. des.								
Eq. carc.								
TOTAL EQ. CARCASSES								
GRAND TOTAL		118.269.056		883.364.387			-765.095.331	-87%

SOURCE : The declarations of the Member States before controls.

(1) Period 13/2010 annual declaration

quantities are expressed in
tonnes (alcohol in hl 100%)

ACCOUNTING VALUE OF THE PUBLIC INTERVENTION STOCKS AS AT :
(BEFORE THE COMPLEMENTARY DEPRECIATION)

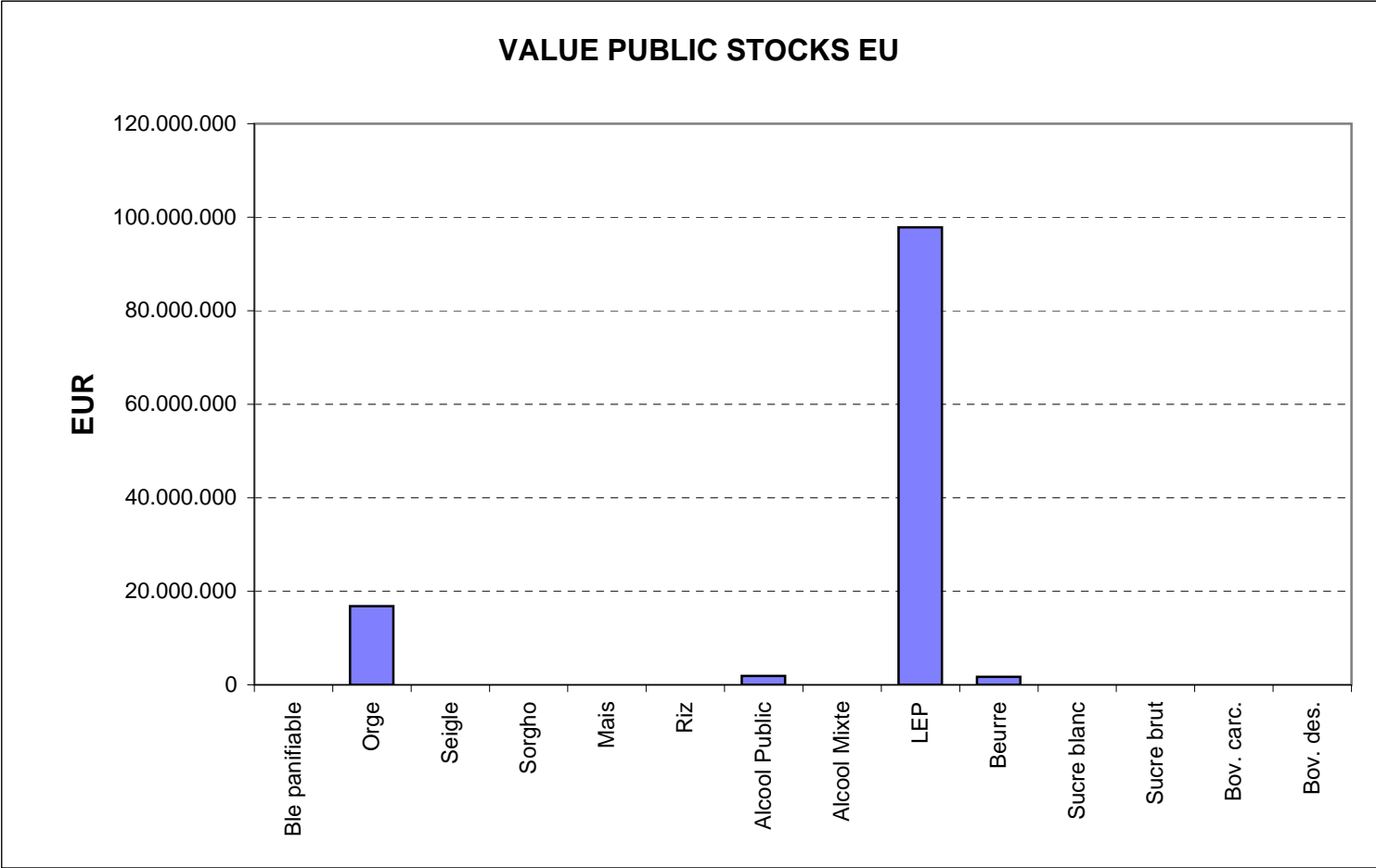
30-sep-11

AGRI I.4

J. FLORET tel. 53236

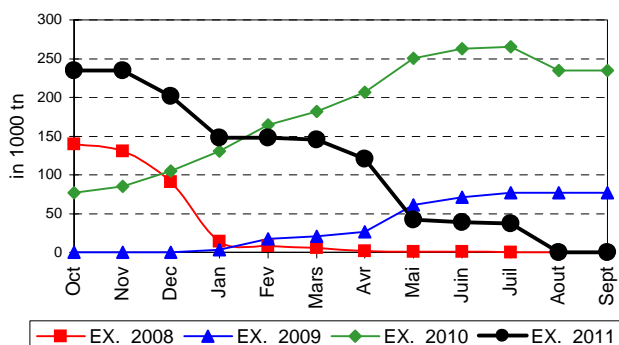
Produits		BE	BG	CZ	DK	DE	EE	IE	EL	ES	FR	IT	CY	LV	LT	LU	HU	MT	NL	OS	PL	PO	RO	SI	SK	FIN	SE	UK	TOTAL				
BLE PANIF	quant.																																
	valeur																																
ORGE	quant.					16.856					397															75.350	64.820	7.904		165.326			
	valeur					1.694.032					40.368															7.697.743	6.595.455	782.775		16.810.372			
SEIGLE	quant.																																
SEIGLE	valeur																																
SORGHO	quant.																																
SORGHO	valeur																																
MAIS	quant.																																
MAIS	valeur																																
TOT.CER	quant.					16.856					397															75.350	64.820	7.904		165.326			
RIZ	quant.																																
RIZ	valeur																																
ALC.P.	quant.												7.112				48.092														55.204		
ALC.P.	valeur												241.520				1.635.125														1.876.645		
ALC.M.	quant.																																
ALC.M.	valeur																																
TOT.ALC.	quant.												7.112				48.092														55.204		
LEP	quant.	9.466		330		18.084	635	8.513			6.740				3.578				3.527		1	0					191	14.599		65.663			
LEP	valeur	14.017.578		520.420		26.907.332	908.769	12.717.037			10.098.370				5.362.182				5.272.168		1.223	674					285.723	21.754.834		97.846.309			
BEURRE	quant.						1								796																796		
BEURRE	valeur						1.124								1.734.604																1.735.728		
TOT L&B	quant.	9.466		330		18.084	636	8.513			6.740				4.373				3.527		1	0					191	14.599		66.460			
S. BLANC	quant.																																
S. BLANC	valeur																																
S. BRUT	quant.																																
S. BRUT	valeur																																
TOT. SUC	quant.																																
BOV.QUA	quant.																																
BOV.QUA	valeur																																
BOV.DES	quant.																																
BOV.DES	valeur																																
EQ. CARC	quant.																																
TOT EQ	quant.																																
EU TOTAL	valeur	14.017.578		520.420		28.601.365	909.893	12.717.037			10.138.738		241.520		7.096.786		1.635.125		5.272.168		1.223	674					7.697.743	6.881.178	22.537.608		118.269.056		

PUBLIC INTERVENTION STOCKS

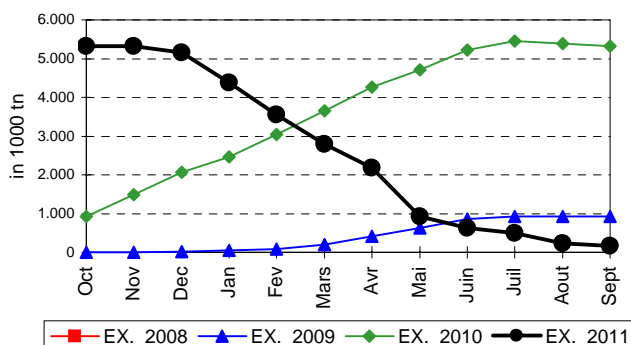


EVOLUTION IN QUANTITIES OF PUBLIC INTERVENTION STOCKS

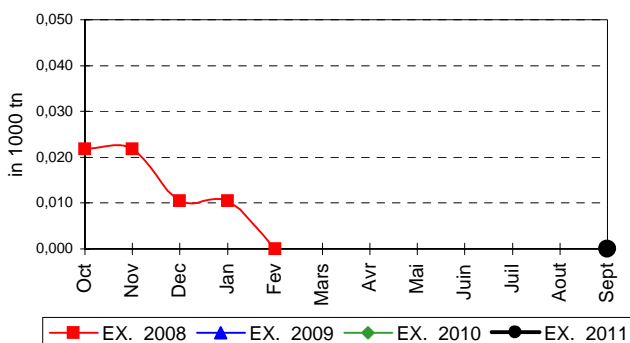
BLE TENDRE PANIFIABLE



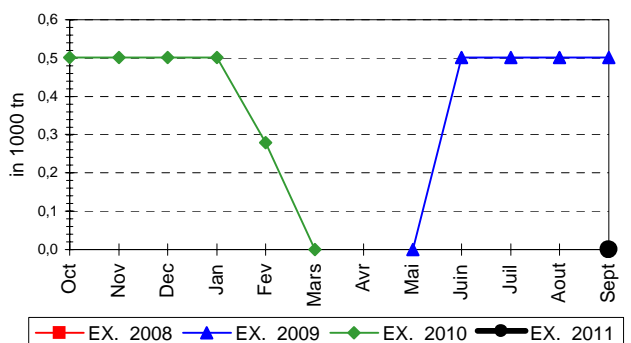
ORGE



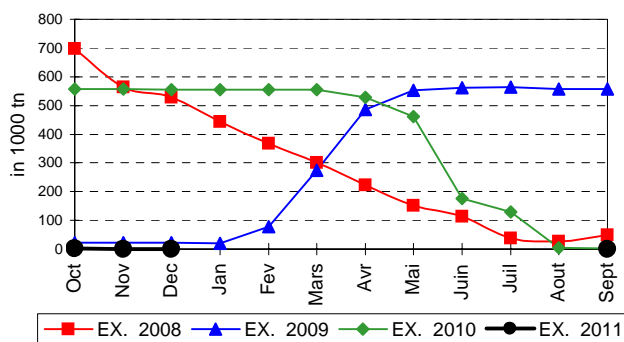
SEIGLE



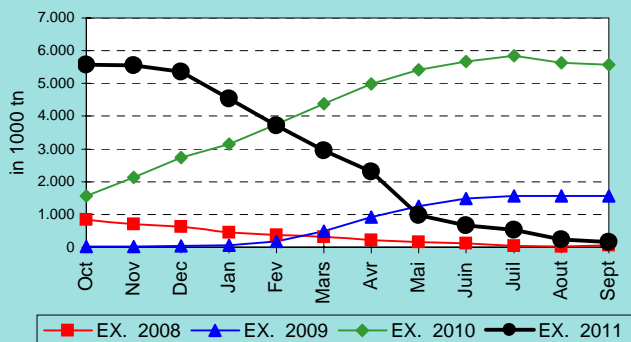
SORGHO



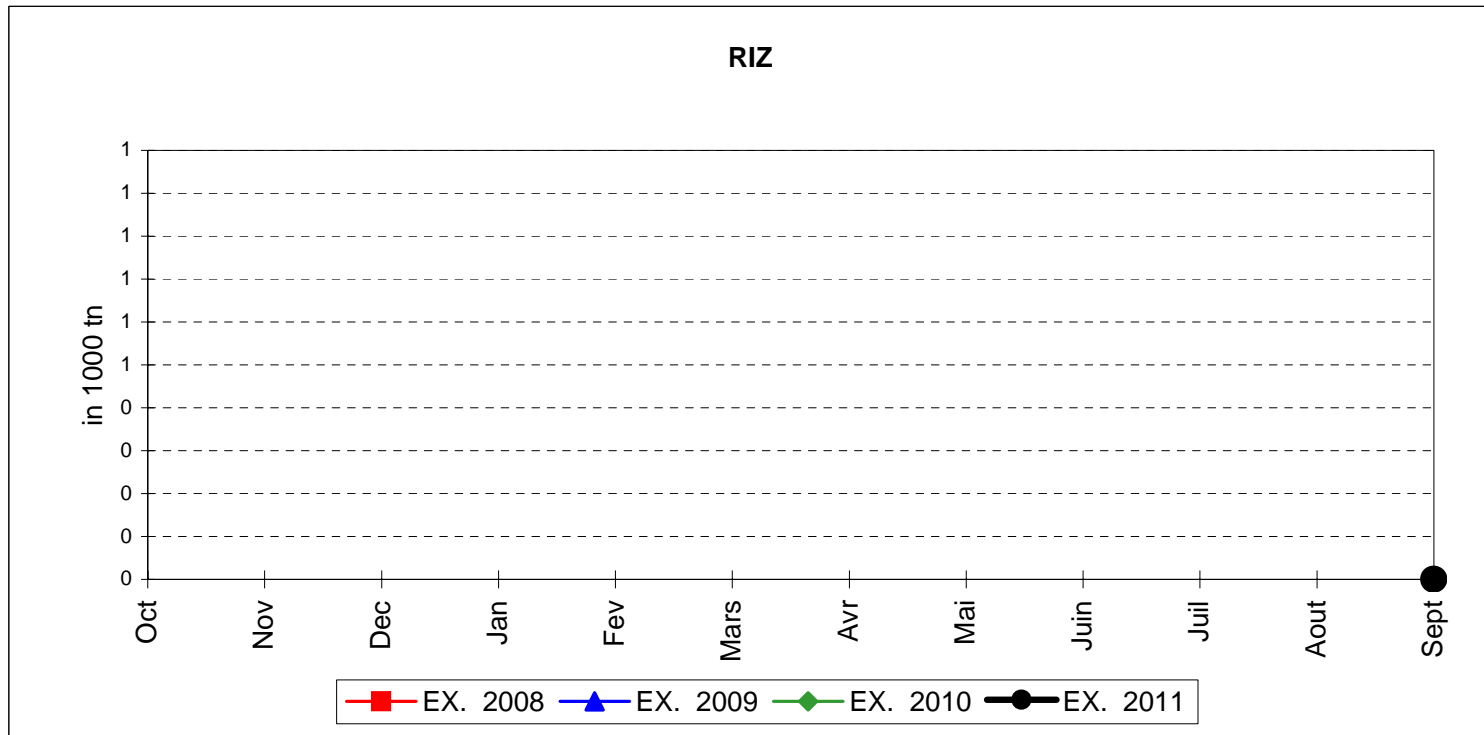
MAIS



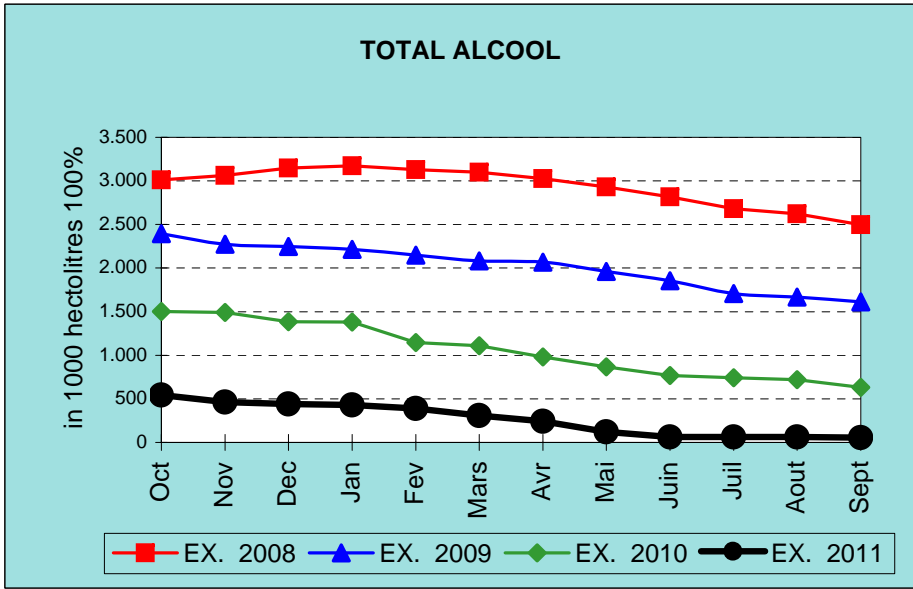
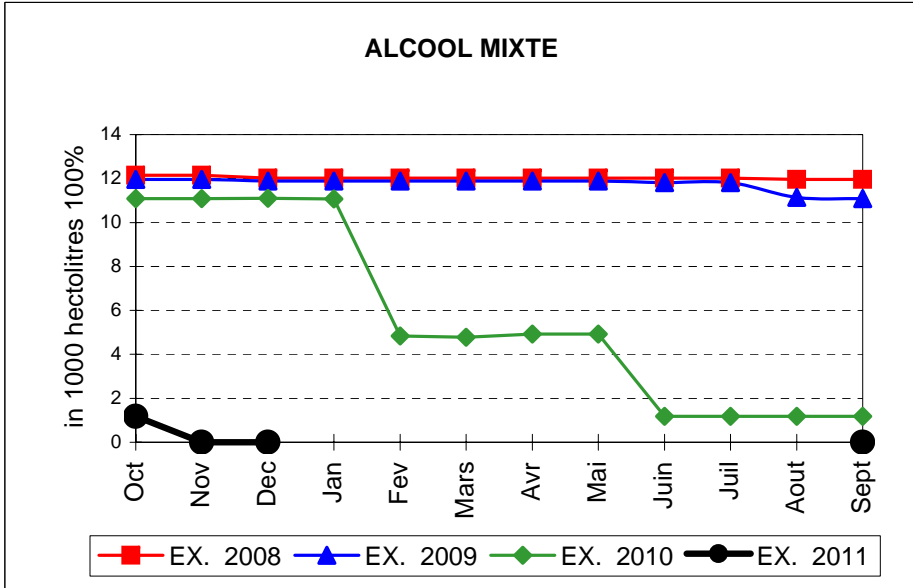
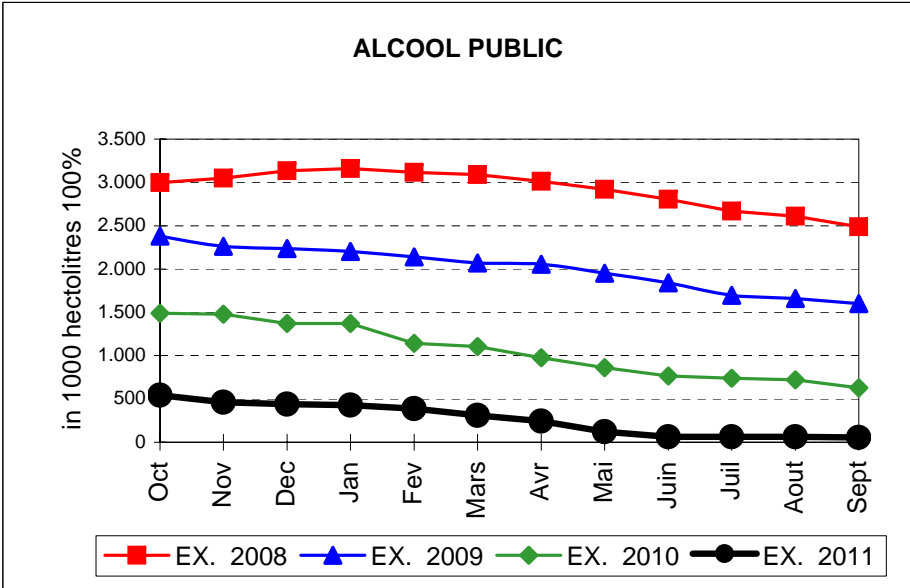
TOTAL CEREALES



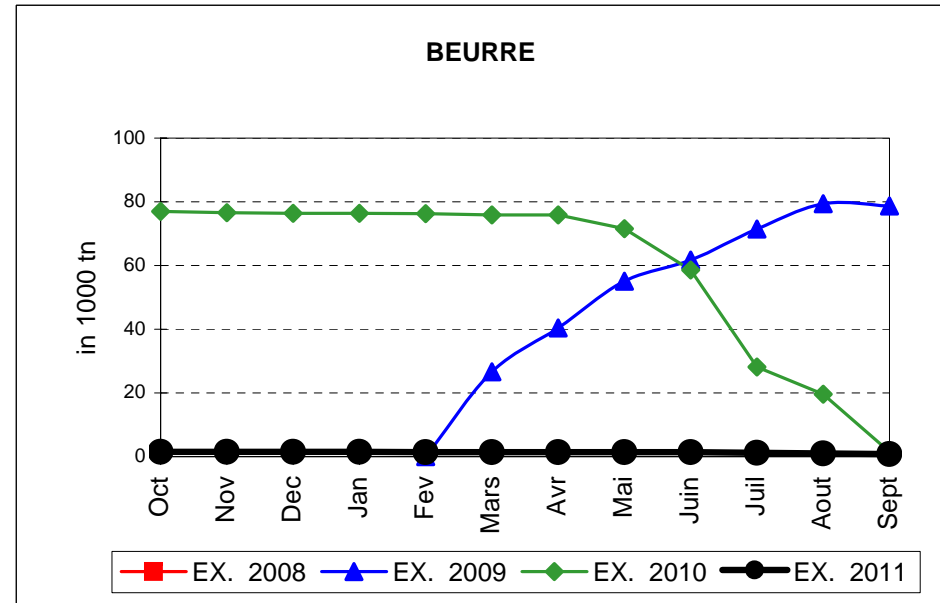
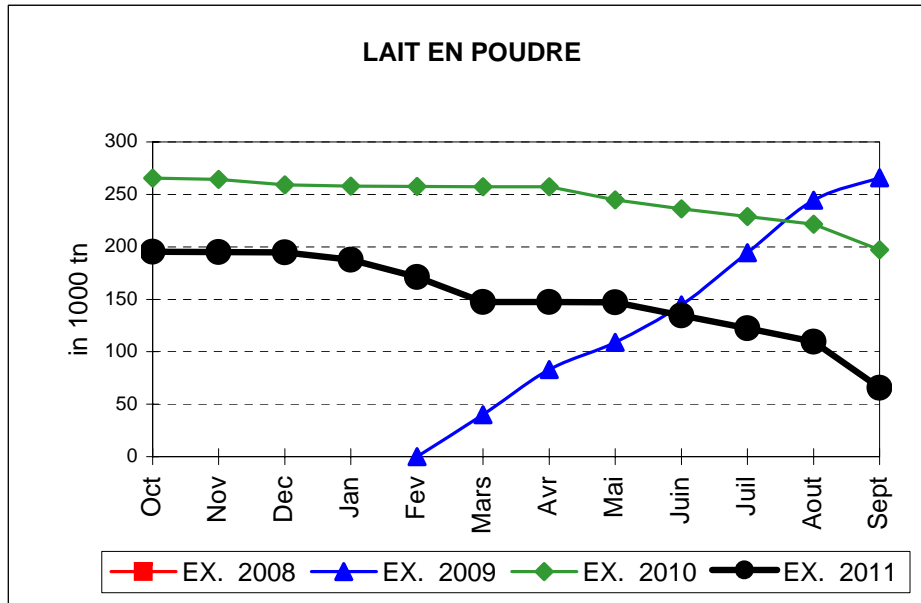
EVOLUTION IN QUANTITIES OF PUBLIC INTERVENTION STOCKS



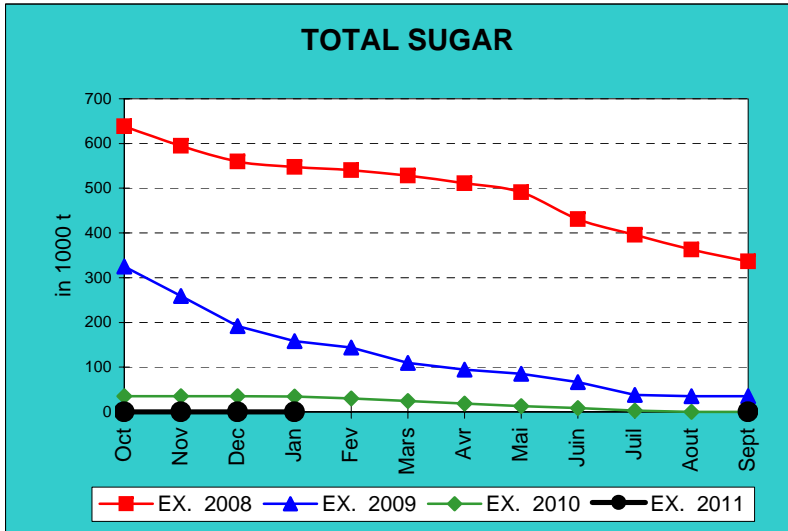
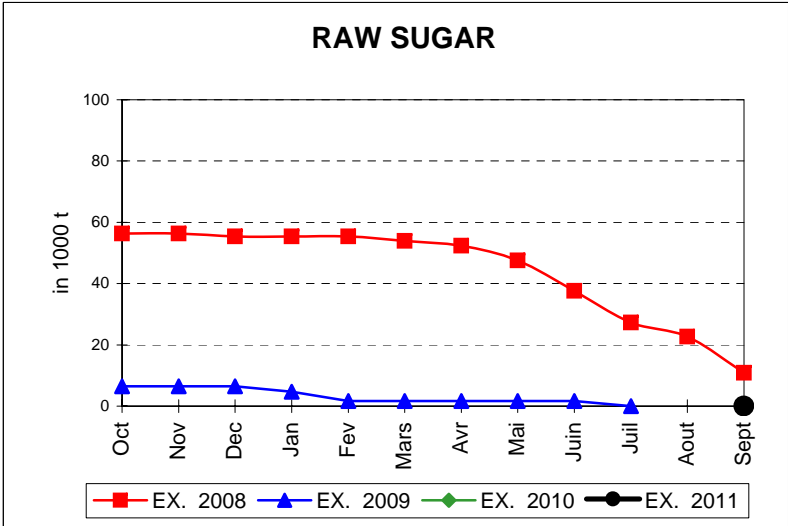
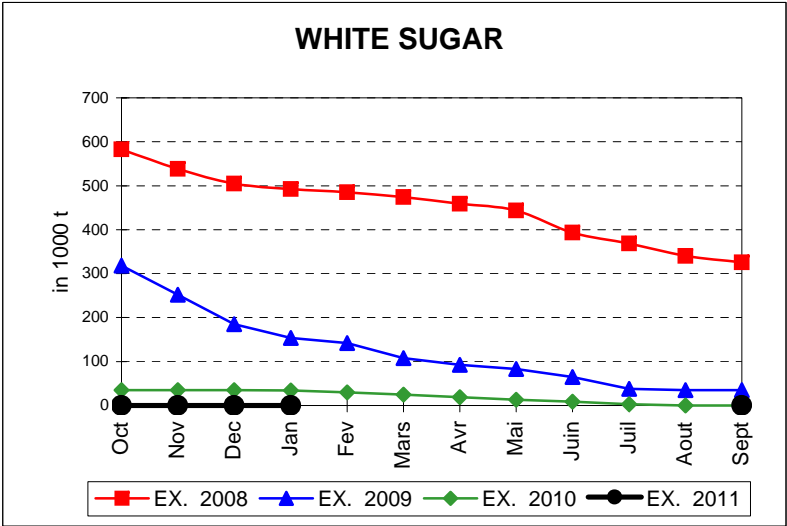
EVOLUTION IN QUANTITIES OF PUBLIC INTERVENTION STOCKS



EVOLUTION IN QUANTITIES OF PUBLIC INTERVENTION STOCKS

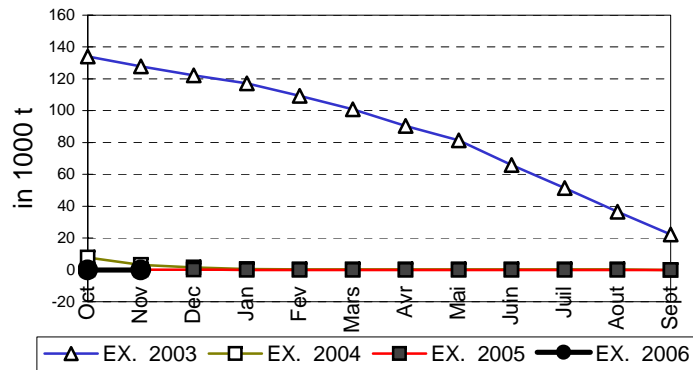


EVOLUTION IN QUANTITIES OF PUBLIC INTERVENTION STOCKS

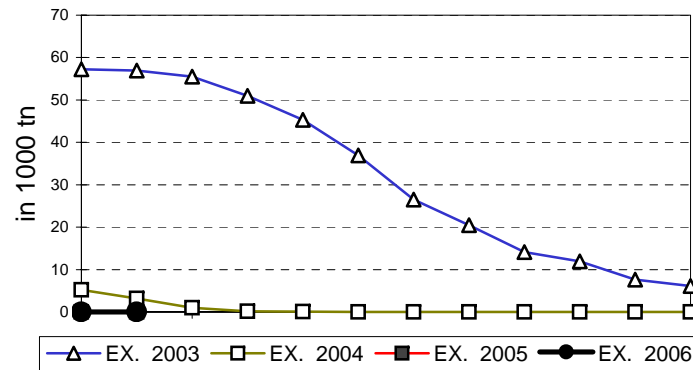


EVOLUTION IN QUANTITIES OF PUBLIC INTERVENTION STOCKS

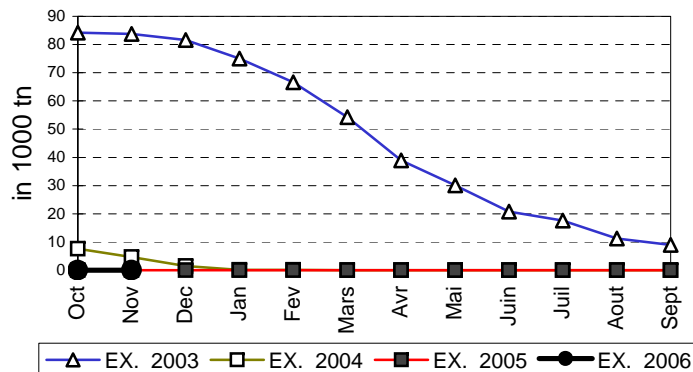
VIANDE BOVINE CARCASSES



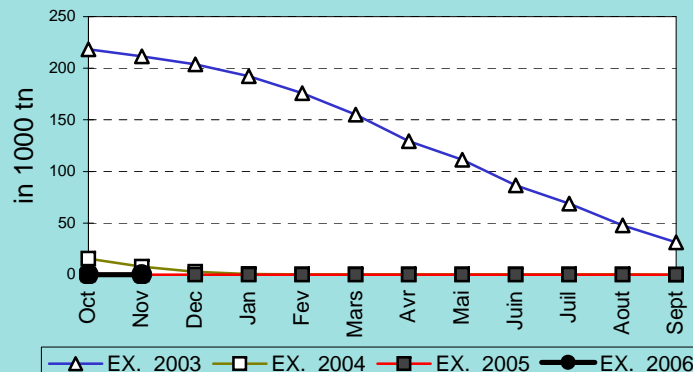
VIANDE BOVINE DESOSSEE



VIANDE DESOSSEE EN EQUIVALENT CARCASSES



TOTAL VIANDE EN EQUIVALENT CARCASSES



COMPARED WITH PREVIOUS MONTH

EU TOTAL	30-sep-11		31-ago-11		CHANGE IN QTY		CHANGE IN VALUE	
	QUANTITY (tn or hl)	VALUE (in Euro)	QUANTITY (tn or hl)	VALUE (In Euro)	ABSOLUTE (tn or hl)	%	ABSOLUTE (in Euro)	%
CLICK TOTALS FOR GRAPHICS	(a)	(b)	(c)	(d)	(e)=(a)-(c)	(f)=(e)/(c)*%	(g)=(b)-(d)	(h)=(g)/(d)*%
Blé panifiable								
Orge	165.326	16.810.372	234.644	23.880.784	-69.318	-30%	-7.070.411	-30%
Seigle								
Sorgho								
Mais								
TOTAL CEREALES	165.326	16.810.372	234.644	23.880.784	-69.318	-30%	-7.070.411	-30%
TOTAL RIZ								
Alcool Public	55.204	1.876.645	61.631	2.095.172	-6.427	-10%	-218.527	-10%
Alcool Mixte								
TOTAL ALCOOL (HL 100%)	55.204	1.876.645	61.631	2.095.172	-6.427	-10%	-218.527	-10%
LEP	65.663	97.846.309	109.516	163.263.406	-43.853	-40%	-65.417.097	-40%
Beurre	796	1.735.728	1.044	2.250.251	-247	-24%	-514.523	-23%
TOTAL LAIT ET BEURRE	66.460	99.582.038	110.560	165.513.657	-44.100	-40%	-65.931.619	-40%
Sucre blanc								
Sucre brut								
TOTAL SUCRE								
Bov. carc.								
Bov. des.								
Eq. carc.								
TOTAL EQ. CARCASSES								
GRAND TOTAL		118.269.056		191.489.613			-73.220.558	-38%

SOURCE : The declarations of the Member States before controls.

COMPARED WITH PREVIOUS YEAR

EU TOTAL	30-sep-11		30-sep-10		CHANGE IN QTY		CHANGE IN VALUE	
	QUANTITY (tn or hl)	VALUE (in Euro)	QUANTITY (tn or hl)	VALUE (In Euro)	ABSOLUTE (tn or hl)	%	ABSOLUTE (in Euro)	%
CLICK TOTALS FOR GRAPHICS	(a)	(b)	(c)	(d)	(e)=(a)-(c)	(f)=(e)/(c)*%	(g)=(b)-(d)	(h)=(g)/(d)*%
Blé panifiable			234.577	24.151.808	-234.577	-100%	-24.151.808	-100%
Orge	165.326	16.810.372	5.326.165	540.452.273	-5.160.839	-97%	-523.641.900	-97%
Seigle								
Sorgho								
Mais			3.142	318.234	-3.142	-100%	-318.234	-100%
TOTAL CEREALES	165.326	16.810.372	5.563.883	564.922.315	-5.398.557	-97%	-548.111.942	-97%
TOTAL RIZ								
Alcool Public	55.204	1.876.645	628.737	23.343.472	-573.533	-91%	-21.466.827	-92%
Alcool Mixte			1.173	4.645	-1.173	-100%	-4.645	-100%
TOTAL ALCOOL (HL 100%)	55.204	1.876.645	629.910	23.348.117	-574.706	-91%	-21.471.472	-92%
LEP	65.663	97.846.309	197.223	294.162.025	-131.560	-67%	-196.315.716	-67%
Beurre	796	1.735.728	1.545	3.343.770	-749	-48%	-1.608.042	-48%
TOTAL LAIT ET BEURRE	66.460	99.582.038	198.769	297.505.795	-132.309	-67%	-197.923.758	-67%
Sucre blanc			9	3.052	-9	-100%	-3.052	-100%
Sucre brut								
TOTAL SUCRE			9	3.052	-9	-100%	-3.052	-100%
Bov. carc.								
Bov. des.								
Eq. carc.								
TOTAL EQ. CARCASSES								
GRAND TOTAL		118.269.056		885.779.279			-767.510.224	-87%

SOURCE :

The declarations of the Member States before controls.

THE PUBLIC STORAGE FLASH REPORT AS AT										30-sep-11
ESPAÑA										
PRODUCTS	YEAR-TO-DATE		OPENING BALANCE		CHANGE IN QTY		CHANGE IN VALUE			
	QUANTITY (in tonnes or hl)	VALUE (in Euro)	QUANTITY (in tonnes or hl)	VALUE (in Euro)	ABSOLUTE (in tonnes or hl)	%	ABSOLUTE (in Euro)	%		
	(a)	(b)	(c)	(d)	(e)=(a)-(c)	(f)=(e)/(c)*%	(g)=(b)-(d)	(h)=(g)/(d)*%		
Ble panifiable										
Orge										
Seigle										
Sorgho										
Mais										
TOTAL CEREALES										
RIZ										
Alcool Public			373.725	12.711.227	-373.725	-100%	-12.711.227	-100%		
Alcool Mixte										
TOT. ALCOOL (HL)			373.725	12.711.227	-373.725	-100%	-12.711.227	-100%		
LEP										
Beurre										
TOTAL L & B										
Sucre Blanc										
Sucre Brut										
TOTAL SUCRE										
Bov. carc.										
Bov. des.										
Eq. carc.										
TOTAL EQ. CARC.										
GRAND TOTAL				12.711.227				-12.711.227	-100%	

30-sep-11

