

**NO COMPLEMENTARY DEPRECIATION FIXED FOR 2012
ACCOUNTING YEAR**

CHOOSE COUNTRY

EU TOTAL	YEAR-TO-DATE		OPENING BALANCE (1)		CHANGE IN QTY		CHANGE IN VALUE	
	QUANTITY (tn or hl)	VALUE (in Euro)	QUANTITY (tn or hl)	VALUE (in Euro)	ABSOLUTE (tn or hl)	%	ABSOLUTE (in Euro)	%
CLICK TOTALS FOR GRAPHICS	(a)	(b)	(c)	(d)	(e)=(a)-(c)	(f)=(e)/(c)*%	(g)=(b)-(d)	(h)=(g)/(d)*%
Blé panifiable								
Orge	9.003	912.073	165.326	16.717.611	-156.324	-95%	-15.805.538	-95%
Seigle								
Sorgho								
Mais								
TOTAL CEREALES	9.003	912.073	165.326	16.717.611	-156.324	-95%	-15.805.538	-95%
TOTAL RIZ								
Alcool Public			55.857	1.566.771	-55.857	-100%	-1.566.771	-100%
Alcool Mixte								
TOTAL ALCOOL (HL 100%)			55.857	1.566.771	-55.857	-100%	-1.566.771	-100%
LEP			53.556	79.832.007	-53.556	-100%	-79.832.007	-100%
Beurre			1	2.922	-1	-100%	-2.922	-100%
TOTAL LAIT ET BEURRE			53.558	79.834.930	-53.558	-100%	-79.834.930	-100%
Sucre Blanc								
Sucre Brut								
TOTAL SUCRE								
Bov. carc.								
Bov. des.								
Eq. carc.								
TOTAL EQ. CARCASSES								
GRAND TOTAL		912.073		98.119.313			-97.207.239	-99%

SOURCE : The declarations of the Member States before controls.

(1) Period 13/2011 annual declaration

quantities are expressed in
tonnes (alcohol in hl 100%)

ACCOUNTING VALUE OF THE PUBLIC INTERVENTION STOCKS AS AT :
(BEFORE THE COMPLEMENTARY DEPRECIATION)

30-sep-12

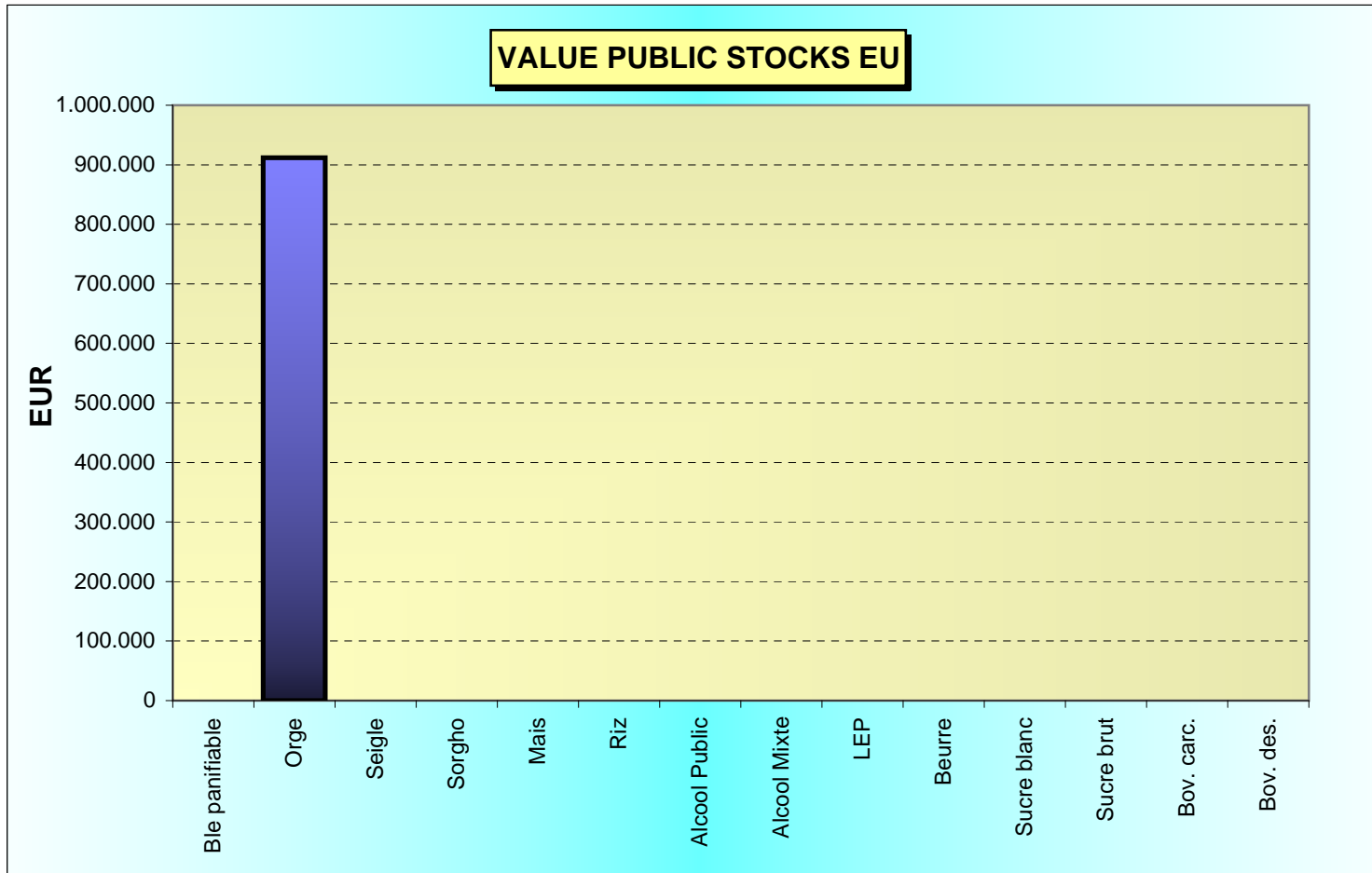
AGRI I.4

G. MERTENS tel. 65910

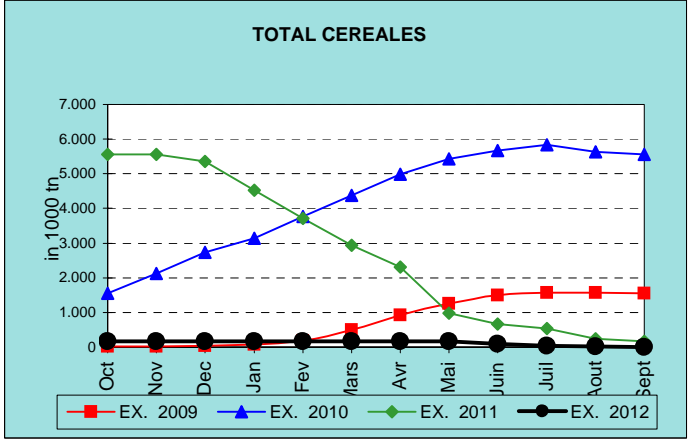
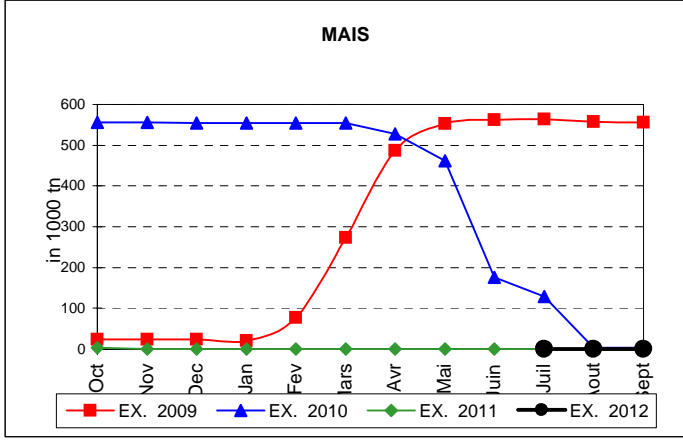
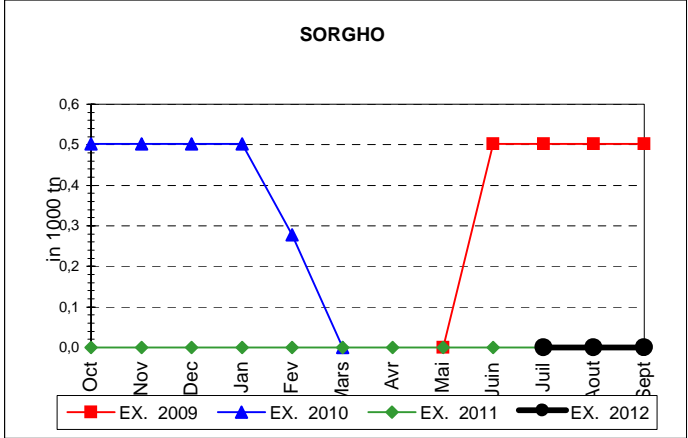
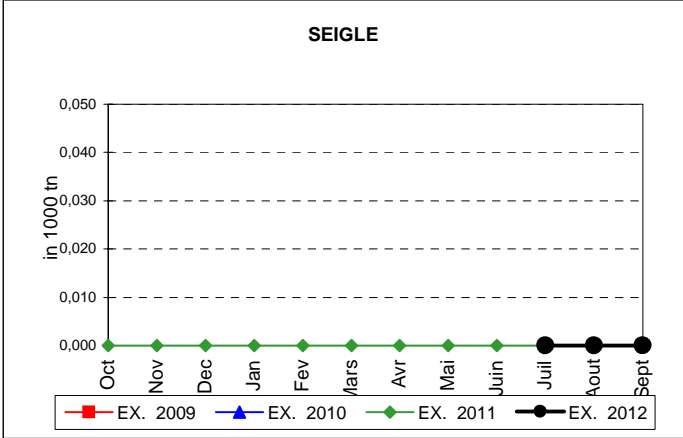
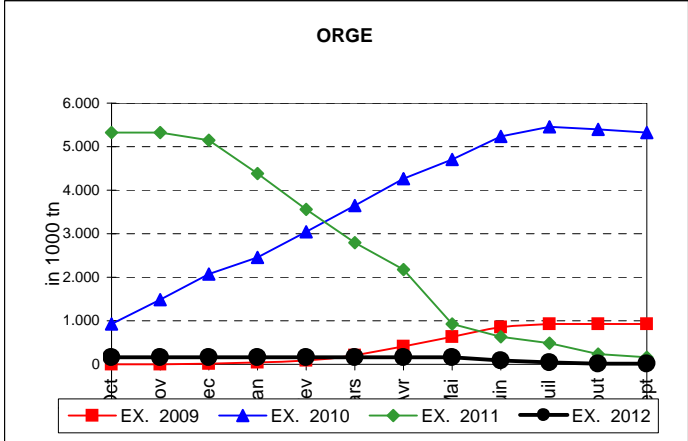
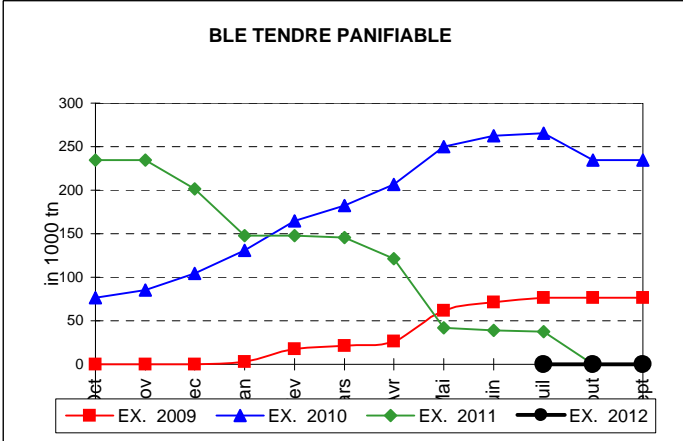
Produits		BE	BG	CZ	DK	DE	EE	IE	EL	ES	FR	IT	CY	LV	LT	LU	HU	MT	NL	OS	PL	PO	RO	SI	SK	FIN	SE	UK	TOTAL
BLE PANIF	quant.																												
	valeur																												
ORGE	quant.										147																8.856		
	valeur										14.893																	897.181	
SEIGLE	quant.																												
	valeur																												
SORGHO	quant.																												
	valeur																												
MAIS	quant.																												
	valeur																												
TOT.CER	quant.										147																	8.856	
RIZ	quant.																												
	valeur																												
ALC.P.	quant.																												
	valeur																												
ALC.M.	quant.																												
	valeur																												
TOT.ALC.	quant.																												
LEP	quant.																												
	valeur																												
BEURRE	quant.																												
	valeur																												
TOT L&B	quant.																												
S. BLANC	quant.																												
	valeur																												
S. BRUT	quant.																												
	valeur																												
TOT. SUC	quant.																												
BOV.QUA	quant.																												
	valeur																												
BOV.DES	quant.																												
	valeur																												
EQ. CARC	quant.																												
	valeur																												
TOT EQ	quant.																												
EU TOTAL	valeur										14.893																	897.181	912.073

30-sep-12

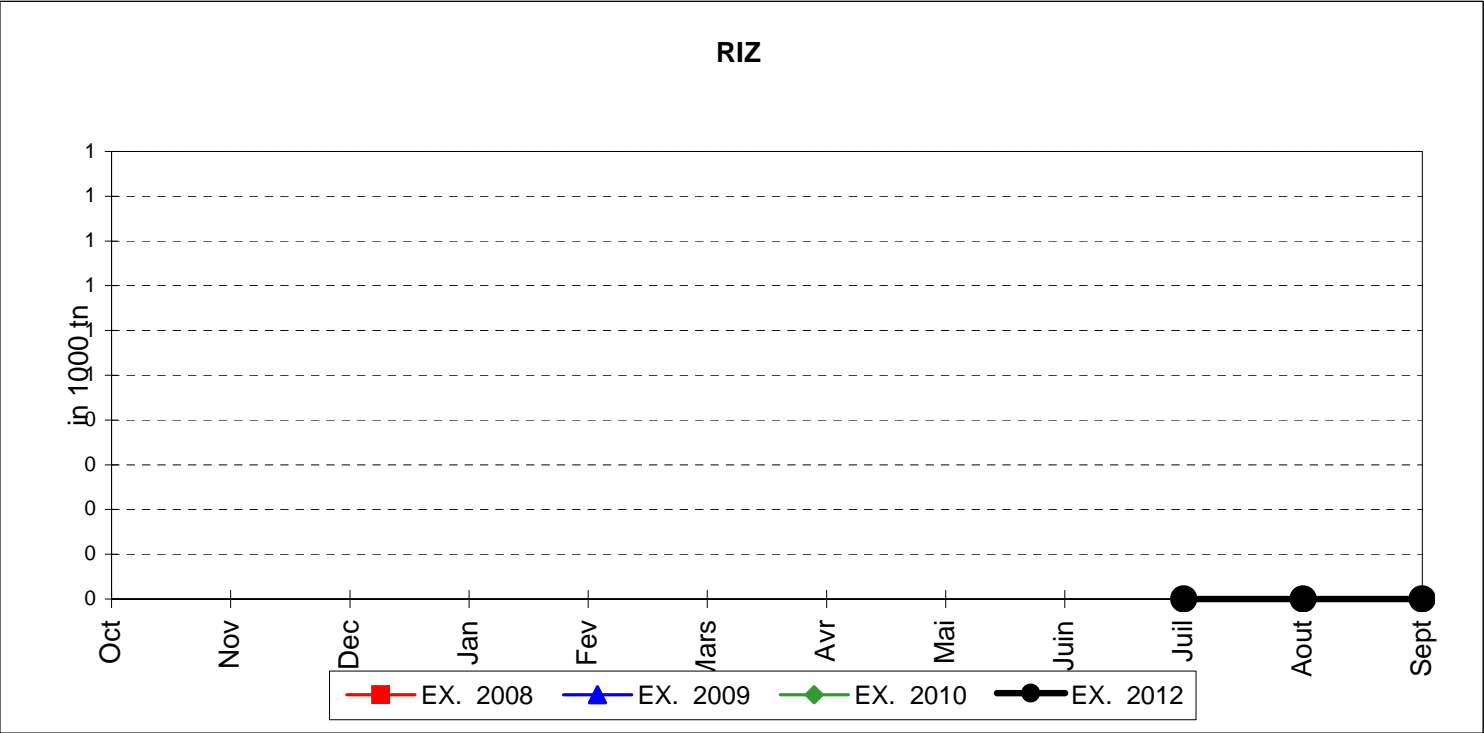
PUBLIC INTERVENTION STOCKS



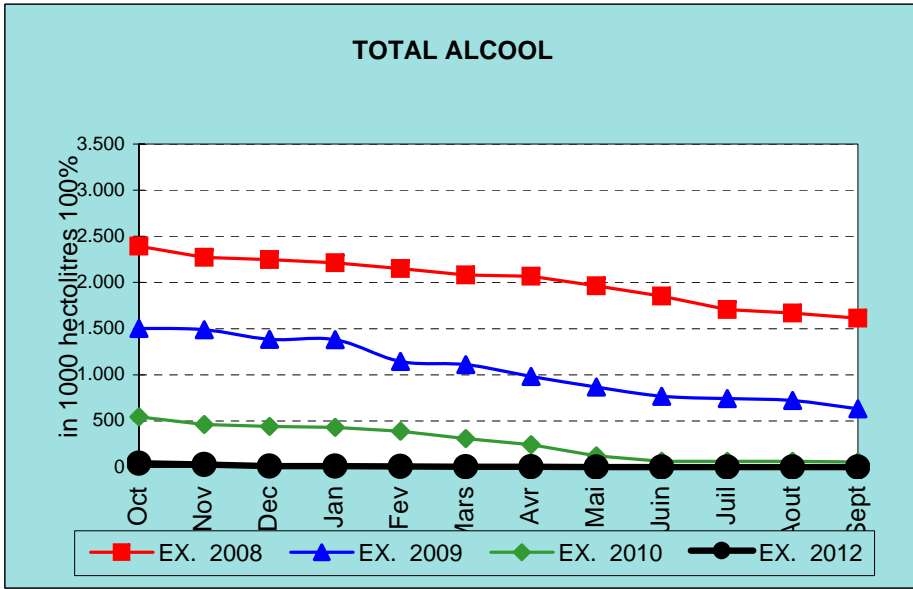
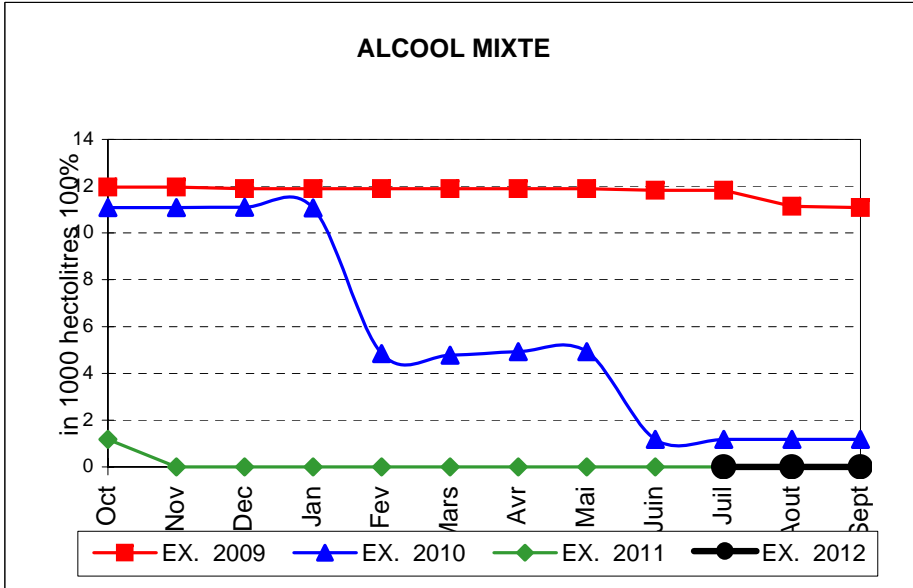
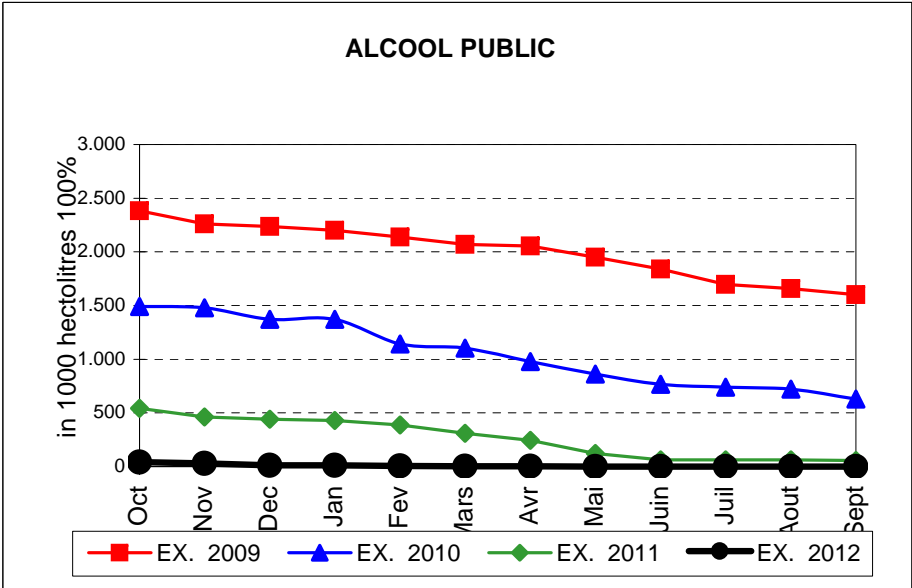
EVOLUTION IN QUANTITIES OF PUBLIC INTERVENTION STOCKS



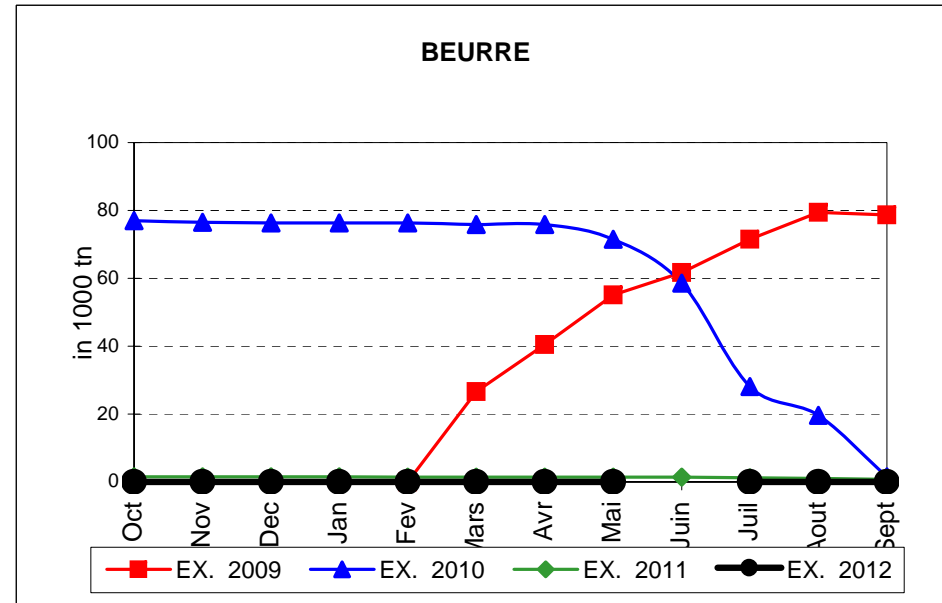
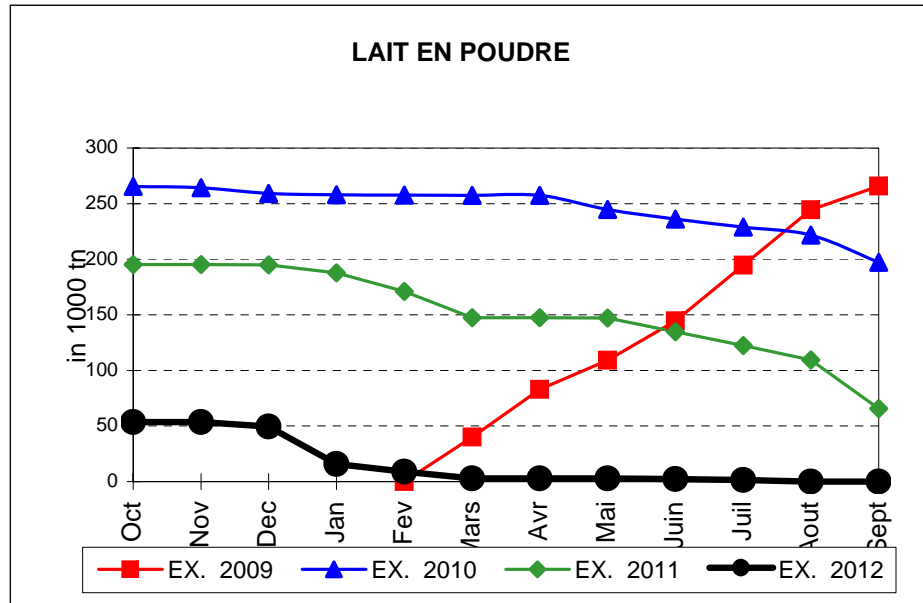
EVOLUTION IN QUANTITIES OF PUBLIC INTERVENTION STOCKS



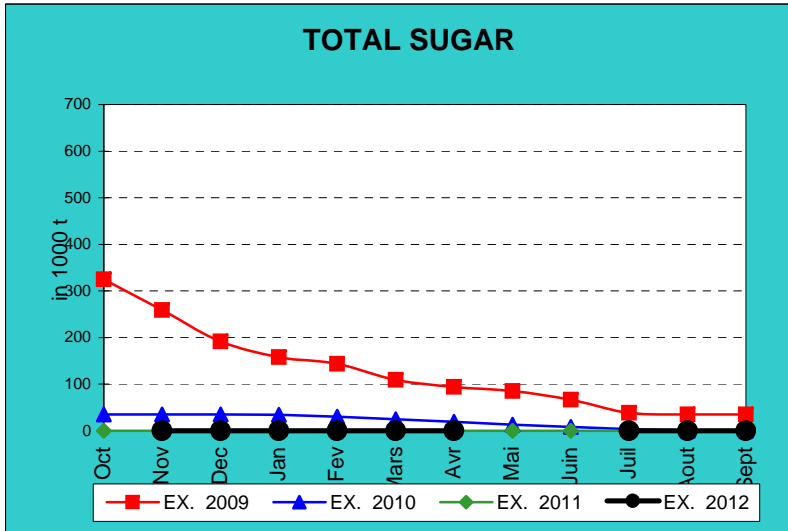
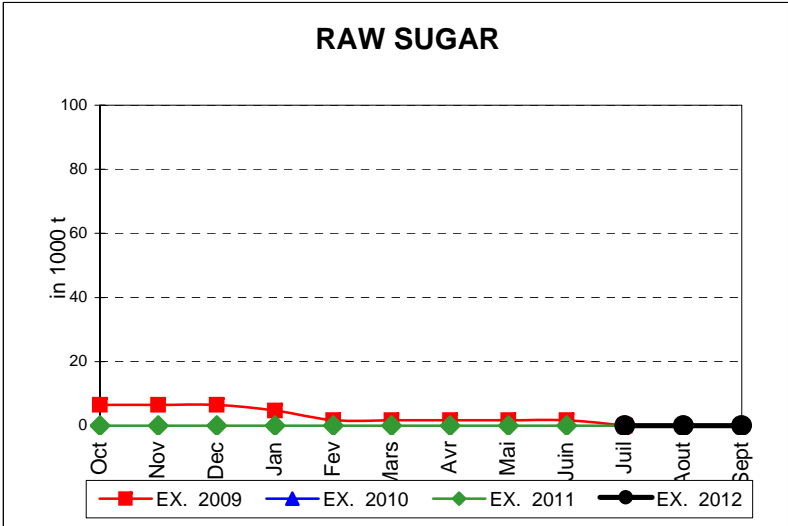
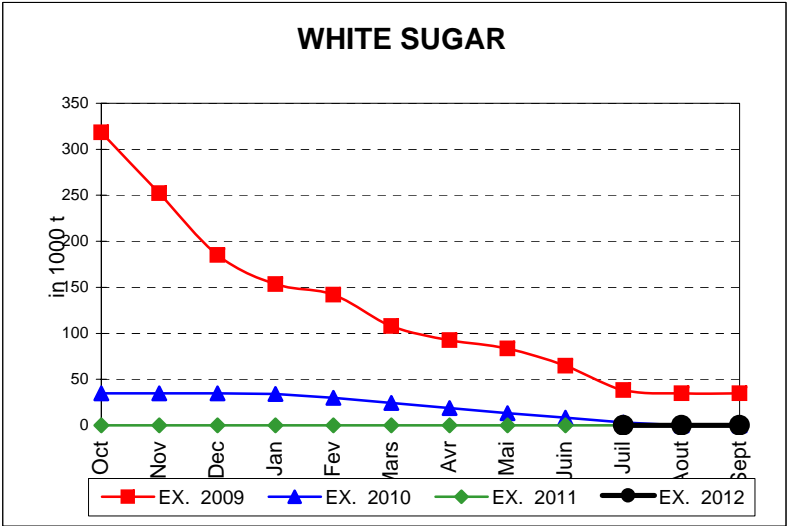
EVOLUTION IN QUANTITIES OF PUBLIC INTERVENTION STOCKS



EVOLUTION IN QUANTITIES OF PUBLIC INTERVENTION STOCKS

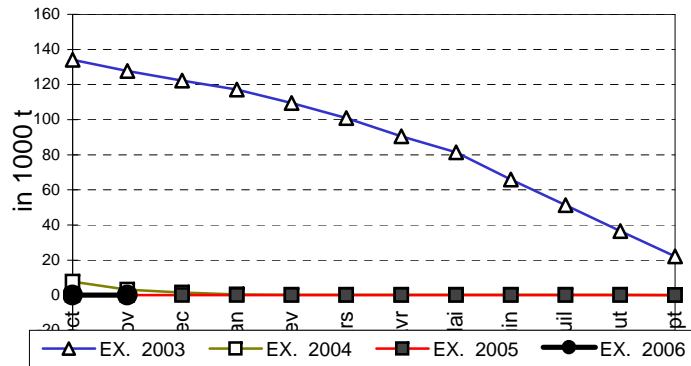


EVOLUTION IN QUANTITIES OF PUBLIC INTERVENTION STOCKS

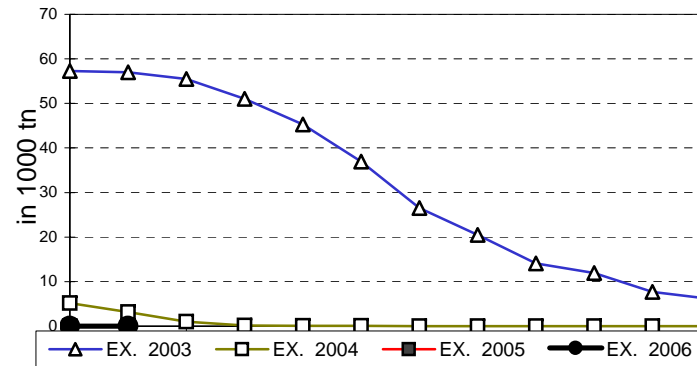


EVOLUTION IN QUANTITIES OF PUBLIC INTERVENTION STOCKS

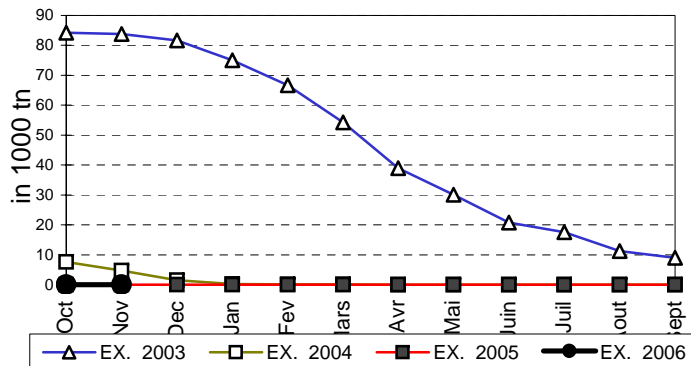
VIANDE BOVINE CARCASSES



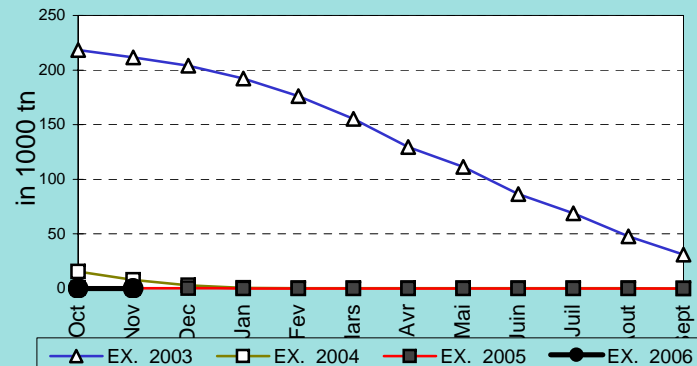
VIANDE BOVINE DESOSSEE



VIANDE DESOSSEE EN EQUIVALENT CARCASSES



TOTAL VIANDE EN EQUIVALENT CARCASSES



COMPARED WITH PREVIOUS MONTH

EU TOTAL	30-sep-12		31-ago-12		CHANGE IN QTY		CHANGE IN VALUE	
	QUANTITY (tn or hl)	VALUE (in Euro)	QUANTITY (tn or hl)	VALUE (In Euro)	ABSOLUTE (tn or hl)	%	ABSOLUTE (in Euro)	%
CLICK TOTALS FOR GRAPHICS	(a)	(b)	(c)	(d)	(e)=(a)-(c)	(f)=(e)/(c)*%	(g)=(b)-(d)	(h)=(g)/(d)*%
Blé panifiable								
Orge	9.003	912.073	20.612	2.088.174	-11.609	-56%	-1.176.101	-56%
Seigle								
Sorgho								
Mais								
TOTAL CEREALES	9.003	912.073	20.612	2.088.174	-11.609	-56%	-1.176.101	-56%
TOTAL RIZ								
Alcool Public								
Alcool Mixte								
TOTAL ALCOOL (HL 100%)								
LEP								
Beurre								
TOTAL LAIT ET BEURRE								
Sucre blanc								
Sucre brut								
TOTAL SUCRE								
Bov. carc.								
Bov. des.								
Eq. carc.								
TOTAL EQ. CARCASSES								
GRAND TOTAL		912.073		2.088.174			-1.176.101	-56%

SOURCE : The declarations of the Member States before controls.

COMPARED WITH PREVIOUS YEAR

EU TOTAL	30-sep-12		30-sep-11 (1)		CHANGE IN QTY		CHANGE IN VALUE	
	QUANTITY (tn or hl)	VALUE (in Euro)	QUANTITY (tn or hl)	VALUE (In Euro)	ABSOLUTE (tn or hl)	%	ABSOLUTE (in Euro)	%
CLICK TOTALS FOR GRAPHICS	(a)	(b)	(c)	(d)	(e)=(a)-(c)	(f)=(e)/(c)*%	(g)=(b)-(d)	(h)=(g)/(d)*%
Blé panifiable								
Orge	9.003	912.073	165.326	16.810.372	-156.324	-95%	-15.898.299	-95%
Seigle								
Sorgho								
Mais								
TOTAL CEREALES	9.003	912.073	165.326	16.810.372	-156.324	-95%	-15.898.299	-95%
TOTAL RIZ								
Alcool Public			55.204	1.876.645	-55.204	-100%	-1.876.645	-100%
Alcool Mixte								
TOTAL ALCOOL (HL 100%)			55.204	1.876.645	-55.204	-100%	-1.876.645	-100%
LEP			65.663	97.846.309	-65.663	-100%	-97.846.309	-100%
Beurre			796	1.735.728	-796	-100%	-1.735.728	-100%
TOTAL LAIT ET BEURRE			66.460	99.582.038	-66.460	-100%	-99.582.038	-100%
Sucre blanc								
Sucre brut								
TOTAL SUCRE								
Bov. carc.								
Bov. des.								
Eq. carc.								
TOTAL EQ. CARCASSES								
GRAND TOTAL		912.073		118.269.056			-117.356.982	-99%
SOURCE :	The declarations of the Member States before controls.							
(1)	Period 12/2011 last monthly declaration							

THE PUBLIC STORAGE FLASH REPORT AS AT										30-sep-12	
ESPAÑA											
PRODUCTS	YEAR-TO-DATE				OPENING BALANCE		CHANGE IN QTY		CHANGE IN VALUE		
	QUANTITY (in tonnes or hl)	VALUE (in Euro)	QUANTITY (in tonnes or hl)	VALUE (in Euro)	ABSOLUTE (in tonnes or hl)	%	ABSOLUTE (in Euro)	%			
	(a)	(b)	(c)	(d)	(e)=(a)-(c)	(f)=(e)/(c)*%	(g)=(b)-(d)	(h)=(g)/(d)*%			
Ble panifiable											
Orge											
Seigle											
Sorgho											
Mais											
TOTAL CEREALES											
RIZ											
Alcool Public											
Alcool Mixte											
TOT. ALCOOL (HL)											
LEP											
Beurre											
TOTAL L & B											
Sucre Blanc											
Sucre Brut											
TOTAL SUCRE											
Bov. carc.											
Bov. des.											
Eq. carc.											
TOTAL EQ. CARC.											
GRAND TOTAL											

30-sep-12

